

The Bradford Bridge

COMMUNITY NEWS *for* NEIGHBORS *by* NEIGHBORS

MONTHLY BRIEFING: Town Board Reports

BOARD OF SELECTMEN

New Committee The Board approved the charter for the Policy Advisory Committee.

Security A motion was approved to appropriate \$399 from the revolving fund for the purchase of security equipment for the transfer station.

Selectmen Stipends The board approved in a 2-1 decision to lower the Selectmen's annual stipend to \$1000 each per year, for a total line item amount of \$3000. Selectmen John Pfeifle expressed concern that the lower stipend amount may discourage future members from running for the Board because it is a large time commitment.

Vacation Time Payouts The board approved the payout of one week's unused vacation time for transfer station manager, Lois Kilnapp. Selectmen Michael James expressed concern over departments requesting vacation time payouts rather than utilizing their vacation time. Michael would like to have the Policy Advisory Committee look at the policy in 2020.

Town Hall Update A required asbestos inspection was performed on the roof shingles and determined that they are free from asbestos. East Coast Fencing is expected to remove the fencing shortly.

Computer Service The Board approved a motion to enter into a five year contract for computer services at \$21,540 per year. The contract includes computer support and replacement of all town computers over the 5 year contract.

(Continued on page 12)

Town Positions Open

March 12, 2020 Town Election

Budget Committee for 3 years
- 2 positions

Budget Committee for 2 years
- 1 position

Cemetery Commission for 3 years
- 1 position

Moderator for 2 years
- 1 position

Planning Board for 3 years
- 2 positions

Scholarship Committee for 3 years
- 1 position

Selectman for 3 years
- 1 position

Supervisor of the Checklist for 6 years - 1 position

Trustee of the Brown Memorial Library for 3 years - 3 positions

Trustee of the Trust Funds for 3 years
- 1 position

Zoning for 3 years
- 2 positions

File declarations of candidacy at the Bradford Town Clerk's Office during the following hours:

Wednesday, January 22, 12- 6
Thursday, January 23, 8-12 / 1-4
Saturday, January 25, 9-noon
Tuesday, January 28, 8-12 / 1-4
Wednesday, January 29, 12-6
Thursday, January 30, 8-12 / 1-4
Friday, January 31, 3-5

*Melissa Cloutier,
Town Clerk/Tax Collector
TC@BradfordNH.org, 938-2288*

Information Session

Have you ever thought about running for a town office but were not sure if it was right for you? An informational session about open positions for town officers will be held at the Brown Memorial Library on Friday, January 17, 2020 from 6-7pm.

Santa Visits Library



Special thanks to Santa and his favorite elf who made the library merry again this year.

New Year's Resolutions From the Bridge

*I will look, see, hear
my world and treasure the
winter sky and winter birds.*

Audrey Sylvester, Board President

Find more resolutions from our team throughout this issue! Read on!



The Bradford Bridge

P.O. Box 463
Bradford, NH 03221
bradfordbridge.org
bradfordbridge345@gmail.com

BOARD OF DIRECTORS

Audrey V. Sylvester, President,
Leslie J. Grey, Treasurer, Mary Keegan-
Dayton, Secretary, Marcia Keller,
Kathleen Bigford, Don Moss, Leah
Cummings & Harriet Douglass

EDITOR

Kathleen Bigford

REPORTING

Devin Pendleton, Monthly Briefing
Caitlin Banaszak, Area Events

DESIGN

Leah Cummings, Graphic Artist
Don Moss, Advertising Coordinator

ADVERTISING

To place an ad, call
Don Moss at 938-2230.

BUSINESS MANAGER

Leslie J. Grey

SUBSCRIPTION/DISTRIBUTION

Harriet Douglass, Nola Jordan

SUBSCRIPTION INFORMATION

To receive The Bridge by mail,
please send a \$25 check
to cover mailing costs to:
P.O. Box 463 Bradford, NH 03221

SUBMISSIONS

Anyone is welcome to submit articles
and/or photographs of interest to the
community. We reserve the right to edit
submissions.

PRINTING

RC Brayshaw & Company, Inc.

Town Offices

SELECTMEN'S OFFICE

Phone: 938-5900

Monday – Thursday: 8:00 AM – 4:00 PM
(closed 12 Noon – 1 PM)
Friday: 8:00 AM – Noon

TOWN CLERK/TAX COLLECTOR

Phone: 938-2288

Monday: Closed
Tuesday: 8 AM – 12 PM/ 1 PM – 4 PM
Wednesday: 12 PM – 6 PM
Thursday: 8 AM – 12 PM/ 1 PM – 4 PM
Friday: Closed
2nd & 4th Saturday: 9 AM – Noon

PLANNING BOARD HOURS

Office hours Tuesdays 3:00 – 6:00 PM

Town offices are temporarily located at
Bradford Area Community Center, 134 East
Main St. P.O. Box 436. Bradford, NH 03221

From the Bridge

At the beginning of this new year and decade a mish mash of thoughts and emotions distract me from this task.

One theme emerges: Concentrating efforts in local community makes the most impact. Think globally, act locally sums it up nicely.

If you feel the need to make a contribution locally, opportunities abound, particularly in town governance. Please take a look at the list of open positions on Page 1, and, if you are so inclined, come to the Library on January 17th to hear about the work that needs to be done.

Our goal is to keep readers as informed as possible about our community. This month we're presenting

- Devin Pendleton's summary of activity on Bradford's boards and committees in the Monthly Briefing,
- The fourth quarter report from Bradford's Select Board,
- An update on Town Hall renovations by Harry Wright,
- Resolutions from Bradford Bridge board and staff members,
- How to participate in a survey from the Warner River Local Action Committee,
- Where hornets hang out in winter by Ann Eldridge,
- How Bradford's municipal waste is handled
- The January calendar and other events in and around Bradford,
- And, ads from local businesses that support this publication.

I'll leave you with this,

“Hear! hear!” screamed the jay from a neighboring tree, where I had heard a tittering for some time, ‘winter has a concentrated and nutty kernel, if you know where to look for it.’” - Henry David Thoreau

As always, we appreciate your readership and support,

Kathleen Bigford, Editor

And everyone who makes this publication possible

11 West Main St.
Bradford, NH



Sweet Beet Market

WELCOME 2020!

Wednesday-Friday: 9-6
Saturday-Sunday: 9-5

We are CLOSED from the 1st of the year to January 8th

I pledge to believe in tomorrow by supporting local food, farms, and community TODAY!

Thank you to everyone who has honored this pledge by shopping at Sweet Beet Market or donating to our Love Local fundraiser. We can't do what we do without YOU!



603-938-5323 • sweetbeet.market@gmail.com

kearsargefoodhub.org



Letter to the Editor:

In a recent issue you extolled the merits of spending time in the outdoors, but I think it's also worth pointing out that a lot of enjoyment can be derived from indoor activities, evidenced by the following lines made famous by Fred Astaire in the song "Cheek to Cheek":

*Oh! I love to climb a mountain,
And to reach the highest peak,
But it doesn't thrill me half as much
As dancing cheek to cheek ...*

Garry Kalajian
Bradford

Help from Bradford Police

For many years, the Bradford Police Department has called older residents and those who might need special help when the weather is threatening or difficult circumstances are projected. These calls provide an opportunity to request assistance or to know that assistance is available if needed.

Chief Jim Valiquet asks that anyone who would like to be or knows someone who should be on the Police Department's list to receive a call to let him know by calling 938-2522.

Town Hall Update

A lot has gone on with the Town Hall's Restoration over the last couple of years. Many items have been discussed at different times, and I thought a comprehensive summary was in order.

At the 2017 Town Meeting, a warrant article passed for restoration work in the amount of \$861,000, partially offset by a grant of \$105,000 from the Land and Community Heritage Investment Program (LCHIP) and \$81,000 in cash and in-kind donations. Shortly thereafter, the building was lifted in preparation for a full basement.

(Many have asked why the building was lifted so soon- answer: Geddes Building Movers could get on site quickly while all of their other projects were delayed until the end of mud season for road access.)

After consultations with the State Fire Marshal's Office, the Board of Selectmen (BOS) interviewed architects and hired Jay Barrett of Barrett Architecture, PC for the project. With many years of experience in restoration projects, Jay's first task was to complete a structural analysis of the building.

The analysis determined a need for previously unanticipated structural reinforcement of the building. Foundation plans were made to accommodate the structural upgrades. The foundation was poured, the building was lowered into place and the structural work was

completed. The structural cost was higher than was anticipated before the analysis and impacted cash available for other work.

The stairs from the first to the second floor at the rear (south side) of the building were rebuilt (enlarged) as fire rated stairs as part of the structural upgrade and in part to meet code so that the auditorium can be fully utilized in the future. This will allow the historic front stairs to remain unchanged.

A furnace was installed, sufficient to heat the first floor. The original granite foundation blocks were sliced and installed as a veneer around the foundation, retaining the original look of the building. Backfilling has restored the building to its original position on the landscape.

The next phase of the project includes a new roof, a new septic system, exterior painting, finish carpentry on the first floor, bathroom plumbing sufficient for first floor use, reconnection of the well, etc.

To be continued...

Harry Wright

**The Time For
FRUIT TREE
PRUNING
IS NOW**

CHARLIE SPAULDING 938-5955

ROCK MAPLE NURSERY
2230 Route 114, Bradford, NH 03221

**Convenient locations throughout
New Hampshire and Vermont.**

**BAR HARBOR
BANK & TRUST**

www.BarHarbor.bank • 888-853-7100
Member FDIC Equal Housing Lender

Ayer & Goss
FUELS

**24 HOUR SELF SERVICE
GASOLINE & DIESEL PUMPS**

Serving the area's heating needs for more than 60 years
FUEL OILS & LP GAS / COMPLETE HEATING SERVICE

938-5335

Route 114, Bradford • Hall Ave., Henniker . . . 428-3333

Bradford Selectmen's 4th Quarter Report

As we wrap up the 2019 Fiscal Year, below are some comments on our various departmental spending "situations":

- Departments with no major issues:
 - Executive, Election & Registration, Financial Administration, Revaluation, Planning & Zoning, General Government Buildings, Cemeteries, Insurances, Other General Govt., Police, Fire Department (after \$\$ released,) Rescue Squad, Welfare, Parks and Rec, Library, Patriotic Purposes, Community Center, Conservation and both long and short term notes.
- Concerns:
 - Legal: Over by approximately 30%, or \$10,000, Causes:
 - The "State Case" with PSNH demanding valuation adjustments that are not consistent with past practices and will be challenged in court.
 - We also had a "local" case that required legal advice and activity; the case was found in the Town's favor.
 - The Fire Chief re-alignment cost \$8,000
 - Fire Department
 - Overages covered by warrant article
 - Rescue: Contract Services- Henniker
 - Not significant; over by approximately \$1,500 due a slight increase in the number of calls
 - Building Code- Enforcement
 - Over some \$3,540; much additional building activity. A good issue in the long run!
 - Highway Department
 - "Close"- should stay within budget
 - Solid Waste Collection & Disposal
 - Both affected by a poor recycling market due to China's withdrawal from the "world market"
 - Excellent attention by our fine employees has kept the overages to a minimal amount; perhaps within \$1,000 of Budget!

Our employee ranks remain strong, involved and ever improving! No

major shifts occurred within the Police, Transfer Station, Library and Executive Departments. The Highway Group had a slight re-alignment and now is well-prepared to handle our important needs! Volunteerism remains strong and consistent.

The NH economy continues to strengthen and Bradford, thankfully, has become part of the ever-improving landscape. We saw two significant building programs at The Appleseed and old Bradford Inn. A large project saw the former Kearsarge Fitness building sold and refurbished to accommodate the new 5 Acres Garden Center & Pet Supplies company. The Town welcomes this effort and looks to see additional similar improvements in the future!

Long-Term efforts should concentrate on:

- Improving the focus and involvement of various Committees
- Addressing a step by step approach to improving our road infrastructure over time with definite objectives understood and in hand
- Installing a program to address all equipment maintenance
- Long-Term Budget discipline

Additional future efforts must focus on reducing our costs by working with other local Towns to establish joint

programs which will save all Towns involved money and improve our infrastructure. Our successful Rescue Squad efforts with Henniker should be a model as we look to establish cooperative arrangements with other Towns and Departments. Better quality service and response time at lower costs... hard to beat! We should find ways to make similar improvements with Warner, Newbury and Sutton; think of improving and reducing costs in Police protection, Fire responses, Executive costs, Legal issues, Insurances, Transfer Station- recycling efforts and, someday, Highway ideas ... joint projects, shared equipment, shared employees ... all open to cost improvements.

The Board has enjoyed serving Bradford and especially is proud of our relationships with a group of fine employees and volunteers.

Have a wonderful 2020.

WALKER

AUTOMOTIVE

Quality < Dependable > Friendly
Automotive Service & Repair






603-526-4848

Rt 11, Wilmot, NH
Foreign & Domestic Vehicles

www.WalkerAutomotiveInc.com

Major & Minor Repairs

G&A AUTO

Complete Automotive Repair



WINTER IS COMING!

It's time to get your car checked over

- ✓ **Vets receive 10% off**
- ✓ **Alignments 1/2 price with the purchase of 4 tires**
- ✓ **State Inspections**
- ✓ **Free battery & coolant check with oil change**
- ✓ **Computer Diagnostics**
- ✓ **Factory Scheduled Maintenance**

603-938-5545

G&A Automotive LLC 454 North Road, Sutton, NH 03273 G.automotivellc@gmail.com

CLASSIFIED

For sale: 2 pair XC skis (190s/220s), boots (women's 9/men's 10), bindings (both 3-prong) well-used, but enough life left for a starter kit!

\$50 each. Leah & Adam 938-2017

Classified ads are free to individuals offering personal items for sale that are under \$250. Text only. Businesses are not eligible. Deadline is the 20th of the month, email your ad to: bradfordbridge345@gmail.com

We're your Hometown Bank.

And we are proud to be a part of the local community. Count on us for all of your local banking and ATM needs. How can we help you?

Newport | Bradford (ATM) | Concord
 Concord (ATM) | Grantham | New London
 Sunapee | Warner | 800.562.3145
 sugarriverbank.com
 Member FDIC | EQUAL HOUSING LENDER
 Like us on Facebook!   Est. 1895



Alcoholics Anonymous

Open 12-step meeting

Saturday Mornings
 8:30-9:30am

Bradford Community Church
 Contact Karen: 938-5446

Bradford Fish and Game

An important meeting of the Bradford Fish and Game Club will be held at our clubhouse on Gillingham Drive at 7pm on Tuesday January 7, with a blizzard date of January 8. The club is a non-profit organization that runs programs related to hunting, fishing and outdoor activities. Annually we sponsor kids' fishing derbies, youth days and host Hunter Safety programs. We have expanded on the property and have 3 D archery and shooting areas.

As occurs with many organizations, our activities are run by "the few". We are in a position this year where we are actively searching out interested persons to help us with these programs. As a non-profit, we will always gladly welcome financial donations, but we would love to have new members and volunteers join us in an effort to keep our present programs running and to expand into new ones.

If you would like information, you can refer to the *BFandG.com* website or call Fritz at 603-748-0117 or Colleen at 938-2898. Please share this information with friends or family you think might have interest. The Clubhouse is opposite Lake Todd only a few buildings off of Rt 103 on Gillingham Drive. Come and join us to help discuss the future of our club.

I will consider answering my home phone, and maybe answer emails sooner.

Leslie Grey, Treasurer



Photos and Submissions for 2019 Town Report

The Selectmen's Office is gathering information for the 2019 Town Report. If you have photos of the Town's faces, places or events that you would like to share, please forward them to *administrator@bradfordnh.org*. Old and historic photos are welcome, too. Be sure to include the photographer's name (if known) so proper credit can be noted.

Similarly, if you represent a local organization and would like to submit an update of your 2019 activities for the Town Report, please forward it to *administrator@bradfordnh.org*. Be sure to include photos of your organization's 2019 events as well!

Submissions *must* be received by January 31st for inclusion in the report.

From the Selectmen's Office – Looking for Volunteers!

The Selectmen are currently looking for volunteers to serve on a Solar Research Committee. The purpose of this committee is to research opportunities for the Town to employ solar solutions to reduce the Town's electric expense as well as our carbon footprint.

The Selectmen are also looking for volunteers to serve on a Policy Advisory Committee. The intent of this committee is to develop and review a wide variety of new and current policies by engaging subject matter experts to develop recommendations for the Select Board.

Interested in one of these committees or in volunteering in another way? Contact the Selectmen's Office at 938-5900 or *administrator@bradfordnh.org!*



Delicious Pizza!

Dine in, call ahead, or get it **DELIVERED!**
 Appetizers, Subs, Salads, Dinners and more!

(603) 938-2600



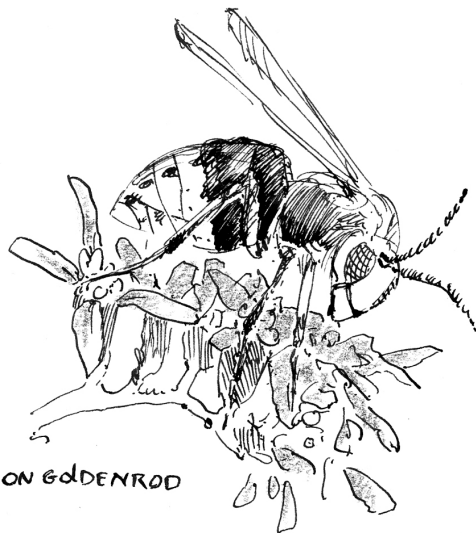
14 Flavors of Premium Ice Cream



Slices available all day

Daily Lunch Specials

Located at the corner of Rte. 103 & Main - Bradford, NH



~OUTSIDE~

This fall, when the days were just starting to cool in earnest, I hiked the back hill by way of clambering over a very large and very dead sugar maple. Cupping my hands to excavate the glorious duff from its body, I found myself gazing at a bald-faced hornet who was passively gazing back with frightened, multi-faceted eyes. I reburied her, hoping she could rouse herself to refashion her destroyed winter home.

She chose this spot because it had the precise amount of moisture to prevent desiccation and yet deep enough to protect her from any deluge of freezing water. Temperatures must be low enough to slow down metabolism and conserve body fat through the winter. (Yes, insects have body fat too.) But temperatures can't go so low as to cause damage.

This hornet was pregnant. Future generations were relying on her judgement – and the serendipity of accidental disturbance. Male ants, wasps, and bees solve the problem of winter survival by simply dying.

She will have spent some time as the weather cooled converting molecules of glycogen into glycerol and sorbitol – both will act as antifreeze. She may also move water out of important cells that would rupture if frozen. This process requires temperatures to drop slowly in the fall and rise slowly in the spring.

This hornet (more properly called a wasp and closely related to the familiar yellow jackets) likely fashioned a space in the duff where she could dangle by her mandibles – a place where freezing water molecules couldn't touch her body making her a handy nucleation site for ice crystals to form. Somehow billions of years of trial and error condensed into this exquisitely functioning system that allows her to perform this feat without having tried it before.

Every invertebrate in the Northeast has found a way of passing the winter in one of its life stages – egg, larvae, chrysalis, pupae, or adult – and through trial and error through the ages have timed it to coincide with the seasons.

If you care about birds (or frogs or reptiles or... anything, really) you have to care about bugs in winter. Nearly all birds, even those that are seed-eaters as adults, nurture their young on the protein of insects. Likewise, if you care about food, know that most of what we eat is pollinated by insects. And if you grow food, there are 'good bugs' – such as this bald-faced hornet – whose family will consume all manner of caterpillars and garden-eating insects.

All ecosystems, aquatic or terrestrial, are underpinned by the millions of species of insects. In fact, as a new-comer species, we can't survive long without their complicated interactions.

The rate of insect extinction is eight times faster than that of birds, mammals, and reptiles. Intensive agriculture is the main driver along with its mono culture plan and extensive use of pesticides. Light pollution is a large factor for nocturnal insects. The climate crisis is wreaking its havoc with insect emergence now out of sync with plant biology and bird migration. Many bird populations are declining as a direct result with migratory birds demonstrating physiologic changes in weight and leg and wing length in just a few decades.

What does all this mean for the hornet in the log? Studies predict some measure of resiliency in areas that have a mosaic

of ecosystems – places that can preserve microclimates of wet/dry, cool/warm, low and especially higher elevations. The Nature Conservancy has mapped our area and we are rich in these hopeful geographies if we keep them undeveloped.

If the winter is reasonably steady the hornet will emerge from her log and look around for a suitable nest site. She will begin construction by shaving bits of dry wood, mixing it with her saliva, and forming papier Mache egg chambers. Again, with no coaching or practice or even what we smugly call a brain. Her first offspring will take on chores, freeing her to be a pampered egg machine. In the fall, with all the larvae grown and the mating game at an end, they will take a break and pollinate the goldenrod and spirea and gorge on rotten fruit.

Come spring, returning vireos might tear strips of last year's hornet nest to decorate their hanging basket homes – making them resemble a hornet's nest to would-be predators. And so may it continue.

Ann Eldridge

COONEY ELECTRIC
Licensed Master Electrician – New Hampshire & Vermont

Cell / text 603-748-3155

3rd-Generation Electrician – Family Owned Since 1926

LUMBER BARN
.com

**YOUR LOCAL
 LUMBER YARD &
 HOME CENTER**

Hardware • Paint • Tools • Doors
 Moulding • Windows • Lumber
 Roofing • Siding • Decking & Railing

ONLINE ORDERING • FREE DELIVERY

BRADFORD: (603) 938-5161
 GOSHEN: (603) 863-5601

*Large enough to meet your needs –
 small enough to care*

Puppy Poetry

This is about a gal who just couldn't say no. Bindy, of Bradford garden fame,



Bindy and the new puppies!

decided to adopt a dog who had been found living by her wits at a gas station in Georgia. Bindy jumped through the adoption hoops and showed up at the pick up spot, only to be handed her new pet, but with the caveat, "We think she might be pregnant." Sure enough, after a confirmation trip to the vet and within a fortnight, Bindy's new friend delivered seven squirming pups of indeterminate breeds making her home now abuzz with a whole pack. Bindy named the new mama Beo Woof because, "We can all use a little poetry in our lives." The epic poem, Beowulf, symbolizes the ability to do selfless acts in aid of others. Let's leave it to you to imagine who is the heroine in this local story.

Laurie Buchar

Be Well - Tai Chi, Yoga, Showshoes & Tea

A new year for our town. A new year for our community. A new year for each of us! In January, the business of the holiday season subsides. We find ourselves saturated with sugars and coziness. Full from food and togetherness. There is often a yearning for clean starts and life-changing resolutions. Lucky for us, Bradford has options for just such things! So, get swept up in that feeling and check out what's going on in town.

- Tai Chi and Qigong at Evergreen Healing Arts. These practices involve physical movements balanced by mental processes. The calm, balanced motions nourish your mind, body, and spirit. Become present in the moment, gain freedom from pain and retrain your nervous system. You will come away with enriched capabilities on several levels.

- Yoga for Beginners, also at Evergreen! Have you been wondering what is going on in that new studio upstairs at 11 West Main? Want to give yoga a try but don't even know what asana or vinyasa even mean!/? This class will offer the very

basics of stretching and strengthening in a workshop setting, welcoming questions throughout the class.

- Snowshoeing from Bradford Parks and Rec. Get your gear and get outside and be guided through the local trails. Dress in layers because the internal heat you build will have you shedding in no time.

- Tea at the Village Café. Have you tried a cup of peppermint yet? Peppermint tea boosts your immune system and can help relieve headaches! Come for the tea and stay for the company, because here you will find your community.

Being in a community reminds us that we are a part of something greater than ourselves. That greater something supports us, encourages us and gives us a sense of home.

Leah Cummings

This column is your monthly dose of wellness. Want to contribute?

Contact Leah at 603Leah@gmail.com.

at Newbury Harbor



Bubba's

BAR & GRILLE

**...remember what we always say at Bubba's:
"We're having a lot of fun..."**

976 Route 103, Newbury, NH • 603-763-3290 • bubbahmplt@tds.net • bubbasbarandgrille.com



5 Acres

GARDEN CENTER & PET SUPPLY

(603)938-2497

Hours: Mon - Sat 9am - 6pm / Sun 10am - 3 pm

2600 State Route 103
Bradford, NH 03221
5acresnh@gmail.com
5acresnh.com

NAUGHTON & SON
RECYCLING, LLC.

RESIDENTIAL
COMMERCIAL
CONSTRUCTION
RECYCLING SERVICES

603-938-2282

naughtonrecycling.com

ROLL-OFFS: 15 TO 40 YARDS
CONTAINERS 2 TO 10 YARD



Naughton Recycling Center, LLC

603-938-5234

naughtonrecycling.com



Transfer Station
Recycling Services

Jones Road • Bradford

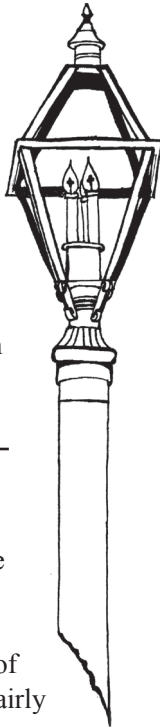
Library Lantern

Brown Memorial Library

78 West Main Street
 bmlbradford@gmail.com

Library Hours:

Monday 10:00am – 6:00pm
 Wednesday 11:00am – 7:00pm
 Friday 10:00am – 6:00pm
 Saturday 9:00am – 1:00pm



From the Director's Desk:

I hope everyone had an enjoyable holiday season. For those who know me well, I may be described as a bit of a “hum-bug.” I always enjoy the day of Christmas, but the lead up is fairly exhausting. Even though I have a small extended family my list of “to do’s” still remains long. I know children find this time of year exciting and fun and magical, and for this I try to keep up my enthusiasm. My kids asked for ridiculously big gifts for Christmas this year, an \$800.00 drone, and a Black Stallion! Needless to say, they didn’t receive these items.

I like the start of the New Year. But I also like to reflect on what I’ve learned and how I’ve grown over the previous year. Sometimes I make resolutions, but they are usually the same year after year. Good health, authentic connection with family and friends, time for peace and quiet, patience, and joyful, spontaneous moments that make life worth living!

I am grateful for my job at Brown Memorial Library. The library is a very special place. I have the chance to connect with a variety of people, talk about things I’m passionate about, and build community. I thank all of our patrons for your contribution.

I would also like to thank our volunteers, for without them the library wouldn’t run as smoothly. The downstairs would be an awful, chaotic mess, our trash would be overflowing, and we probably wouldn’t have many living

plants left. Thank you so much to Peter Isham, Brooks MacCandlish, Annette Leonas, Bea Howe, Meg Fearnley. I also want to thank Seth Benowitz again for his tireless work on getting our new LED lights installed. Many thanks to Mike Moss and Jacquie Pehrson for providing a great visit with Santa. Theresa Bryant, Judy Bohn, Suzanne Ronchetti, and our Friends of the Library, thank you for help to provide snacks to our children’s program.

January Programs:

We Need You! Friday, January 17th from 6:00-7:00pm. Wanting to get more involved in Bradford? Come to the library to learn more about different volunteer and civic positions around town. Many organizations in Bradford need people and new energy to keep going in the right direction. Please come down to hear about the possibilities and places that could use your help.

The Creative Process: Wednesday, January 22nd from 6:00-7:00pm. Sue Anne Bottomley will be here to relate her story of how her 2011 Draw-NH project turned into her book, *Colorful Journey*, published in 2014. She will discuss her creative process, show her lovely watercolors from every town in NH, and tell stories of her adventure.

Bessie’s Story: Wednesday, January 29th from 6:00-7:00pm. Ashley, Tom, and Bessie will be here to talk about their book *Watching the Lights Go Out*. Come hear Bessie’s (the dog) inspiring story and Ashley and Tom’s uplifting message. To learn more prior to the program visit <https://www.bessiesstory.com/>.

Book Group: Wednesday, January 15th from 7:00-8:00pm. We are reading Willa Cather’s *My Antonia*. The story is set at the end of the 19th century on the plains of Nebraska. It tells the story of immigrants who move to the plains and the main character, Antonia’s, life on the prairie.

Upcoming: In February our own, Leslie Grey, will be presenting “Technology Talk,” including all the questions

you have that may come up when you’re trying to work your phone, Ipad, Ipod, Kindle. She will explain texting, tweeting, Facebook, and how to be aware of online scams. For all of you who feel a bit behind in new technology, she will be here to provide a short informational session and answer all your pressing questions. In the meantime, in order to be the most helpful, can you email bmlbradford@gmail.com or stop by the library to let us know what questions you may like answered for the program on Saturday, February 1st from 10:00-11:00am.

Ellen Barselle
 Library Director

Tyler Lawn Care

- Snowplowing
- Full Landscaping Service
- Residential & Commercial
 - Yards & Gardens
 - Lawn Maintenance
 - Hydroseeding

Tyler Lawn Care has been providing quality professional landscaping services to the Kearsarge region since 1998. We take great pride in our work and offer a level of customer service that is unmatched.

(603)456-2063
 tyler@tylerlawncare.com www.TylerLawnCare.com
 32 Split Rock Road PO Box 90 Warner, NH 03278

Leash & Hand

Dog Training
where Science meets Heart

Cheryl J Cornett
 M.Ed.
 CPDT-KA

Bradford*^{NH}
 603-748-3196
www.leashandhand.com



Hello... and Happy New Year!

WE WERE SO PLEASED to have the opportunity to meet some of you personally at Ann's absolutely wonderful retirement party at the Appleseed. Although our role wasn't widely known at that time, a number of people did step forward to offer encouragement which was greatly appreciated. We realize that we have some VERY big shoes to fill, but the good news is that the Hallahan's and we have the same high personal and professional standards, plus the highest respect for each other. We were literally honored when Laura made her proposal to us. You will be able to count on us for the best, most professional, thorough and considerate assistance with your real estate projects, whether buying, selling, or just looking or just curious about the current market. We will work hard to live up to Laura and Ann's legacy as well as our own commitment to be *The Best Team in Town!* We look forward to working with you and getting to know the community even better.

ACTIVELY ON THE MARKET

Beautiful Colonial! Spacious Layout with Eat-in Kitchen, Family Room, Formal Dining Room and Living Room with Fireplace
 • 4 BR, 2.5 BA • Large Deck Across the Entire Back of House • Views of Rowe Mountain • 2 Acres with Mature Perennial Gardens and Stone Walls • 2 Car Garage
31 Maple View Dr., Bradford \$324,900



Emily Campbell,
Listing Agent

(603) 526- 4116 • info@bhgmilestone.com • www.BHGMilestone.com
 P.O. Box 67, 224 Main Street, New London, NH 03257

Bradford Historical Society

Hear Ye!! Hear Ye!! The BHS will be holding a Membership Campaign starting January 2020. Soon a newsletter will be distributed for renewal and new members.

Our Tin Shop is still not accessible for use. Once there is heat installed, we will be able to organize our archives. As soon as there is an idea of the number of the Honorary, Lifetime, renewal and new members, there is a hope that members will be supportive with a willingness to participate in helping to organize our archives since the 2017 "flood".

Aside from that ominous project, there is a huge need and support for the 2020 exhibits, programs and activities involving the Muse (Museums Support Exhibits) 2020 project of the Concord to Clairmont Railroad, "All Aboard." The Bradford railroad station was active in the 1850s. For 20 years it was the last stop while the Newbury Cut was completed. During that time Bradford was a core for dispensing tourism to the New London and Lake Sunapee area as well as Bradford's tourist attractions.

Researchers and interested parties for the "All Aboard" project are needed for the Bradford Historical Society's viability. Presently active members are few .

If you are interested in joining the BHS family, call 938-2119 for early enrollment.



dockside ✂ hair design
 603.938.0090

Jennifer Wright
 Owner/Creative Stylist

2211 Route 114
 Bradford, NH 03221

Like us on Facebook!

MERRIMACK
M
 COUNTY CUSTOMS LLC

Welding - Fabrication

- Railing & Stairs • Custom Fabrication
- Structural Work • CNC Metal Cutting

www.merrimackcountycustoms.com

Obituaries

Laura Sevene

Laura (Heath) Sevene, 71, died Wednesday, November 27, 2019, at the Jack Byrne Center in Lebanon after a sudden illness.

She was born in Concord, NH on March 18, 1948, the daughter of Lorenzo A. and Verna (Moody) Heath. She graduated from Simonds Free High School, Warner, in 1966.

Laura worked for LaValley Building Supplies in Newport from 1984 - 1996 and for the next several years had been a stower for Yankee Book Peddler in Contoocook. The last 15 years of her life she worked as a Companion for the NH Senior Companion Program.

She attended the South Newbury Union Church and was a member of Sunapee Lake Grange. She was Past Matron of Silver Hill Vesta Rehlam Martha Rebekah Lodge #34 of Bradford, President of the Foresters Auxiliary in Newport and was a member of the Loyal Order of Moose of Claremont. She was a lifetime member of the VFW Auxiliary of White River Junction, VT and a member of the American Legion Auxiliary of Claremont, NH. Laura enjoyed bowling, knitting and camping.

She was predeceased by her parents, her husband of 22 years, Francis F. Sevene Sr., 2014, a son, Thomas J. Dalphond in 1970 and a daughter, Joann M. Dalphond in 1985. Members of her family surviving include a sister, Dawna Brunt of Belmont, NH; a niece and two nephews. A graveside service will be held in Sunny Plain Cemetery, Bradford, NH in the spring.

Stanley Wheeler

Stanley Wheeler, age 80 of Concord, died, Wednesday, December 4, 2019 at home.

He was born in Sutton, January 21, 1939. He graduated on the Honor Roll from Simon's High School in Warner. He studied at Bentley University Mccallum Graduate School of Business. He started his own lawn business in 1957. In 1962, he married Juanita, his wife of 57 years. He enlisted in the US Army reserves. He worked for Trans Ocean Air Lines in Windsor Locks, CT as an airplane mechanic. He worked for Merrimack Farmers Exchange in Bow, and became head bookkeeper. He started Stanley G. Wheeler Landscaping in 1962 which he owned and operated until passing.

Stan and Juanita enjoyed vacationing in Florida, Arizona, Lake George, Lake Placid, and Cooperstown, NY. While in Cooperstown one of his favorite places was the Baseball Hall of Fame. Stan played baseball with the Boston Red Sox Old Timers at the fantasy camp in Florida.

Stan enjoyed hunting. He was a licensed NH guide. He was post commander of the American Legion Post 31 in Penacook and member of the First Baptist Church in Bradford.

Stan loved spending time with Juanita who loved and cared for him for five years when he was ill. He is survived by Juanita and daughters, Cindy and Wanda; son-in-laws, Lucien and Rod; grandchildren Rodney Musto and Aleacia Trudeau and her husband Matt; great-grandchildren Kelsey, Kallie, Corey, Khloe and Carter; sisters Claire & Vicky and brother Brad.

Priscilla Delaney Cox Byfield

Priscilla Delaney Cox Byfield, 94, of Hopkinton, died, November 22, 2019, at the Hospice House in Concord, with her loving family by her side. She was born on June 8, 1925, in Syracuse, NY, to parents Laurie Davidson Cox and Gretchen Smith Sanborn Cox, of Henniker.

Priscilla was predeceased by her husband Phillips Byfield Jr., brother Laurie Cox Jr., sister Barbara Ellsworth, and son Gregory Cox Byfield in 2013. She leaves behind sons; Phillips Byfield III and his wife Sara, of Bradford, Kip Byfield and his wife Janet, of Bradford and Stephen Byfield of Henniker. She is survived by four grandchildren: Jessica Dunlap and her husband Bob, Tyler Byfield, Nathaniel Byfield, Delaney Ordway, six great-grandchildren, her beloved niece Gretchen Beanlands, nephews, cousins, many close friends, neighbors and colleagues. Priscilla was much loved and will be missed terribly. Her last words were "I love you all".

Henniker Veterinary Hospital

Small Animal & Equine Practice

Alyssa J. Brust, DVM

Robert A. Brust, DVM

Amy C. Jones, DVM

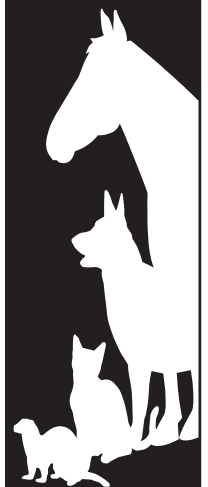
Brittany Y. Paquette, DVM

Olivia J. Lattanzi, DVM

House Calls Available

428-3441

Maple Street, Henniker



Priscilla, (aka P, Prilly, B, Grammie), shared many colorful stories about growing up in the 1930's. Her father was a renowned Landscape Architect and she travelled with her parents across the US. Priscilla attended Syracuse University and graduated from Simmons College, was married in 1948, and raised her family in Lisbon Falls, ME, Rutherfordton, NC, and Spartanburg, SC, where she became a schoolteacher and worked for The Spartanburg County Foundation.

After her husband died, she moved to New Hampshire in 1983, permanently settling in Hopkinton in 1986.

She is remembered for her ability to recall astounding details and aspects of her life and never forgot a birthday or anniversary of her family or friends. She worked for Franklin Pierce Law School for many years as Assistant to the Dean and oversaw the Moot Court. At age 89 she took a part-time position with the State of NH Land and Tax Appeal Office and retired at the age of 93.

A celebration to include all who knew her will be held in June. For more information & to share your stories, please visit holtwoodburyfh.com.



How Far Do We Go?



The Bradford Bridge is being read at the base of Mount Fuji in the Gotenba prefecture Japan.

I read my Bradford Bridge



... in the Sweet Beet Market!!

It's important to stay connected to home. Do you live away? Do you take your Bridge along on vacation? We want to know where you read your copy of The Bradford Bridge. Share your photographs with us so we can stay connected with you!

BradfordBridge345@gmail.com

Bradford Parks and Rec Winter Walking Group

Bradford Parks and Recreation invites you to join us as we go walking in a winter wonderland. Winter is a beautiful time to explore trails around Bradford and we have some top picks for you. If you've wanted to get out for a walk, but didn't know where to go or wanted a buddy, these walks are for you. The walks are "show and go" and will take place on Tuesday morning starting at 10:00 am, lasting between 1 to 2 hours. You will need snowshoes or winter boots with micro spikes, and appropriate winter clothing for these walks.

January Schedule:

Tuesday, January 7- Naughton Property Trails, behind the Bradford Area Community Center. Wooded Trails. Meet in the BACC parking lot.

Tuesday January 14- Pleasant View/Fairgrounds Roads Circuit. Flat field and woods. Meet at intersection of Pleasant View and South Roads in Bradford.

Tuesday, January 21- Bradford Center Meeting House Trails. Starting at the meeting house explore the trails in the woods of old Bradford Center.

Tuesday, January 28- South Road Railroad Bed. Flat wooded terrain. The old railroad bed crosses South Road in South Newbury. Go to where South Road meets Village Road in South Newbury, the railroad bed is about one-half mile from the intersection. In deep snow you may want to use snow shoes, but they're not necessary on the snow machine track.

For more information and directions contact Devin Pendleton 603-715-6809, devinpendleton505@gmail.com or Kathleen Bigford, 603-938-5104, kathleen.bigford@gmail.com.

Hugo's Electric, Inc.
 Licensed & Insured
 RESIDENTIAL • COMMERCIAL
 938-5573
 3191 State Rte 114, Bradford



Warner Pharmacy
Old Fashioned Service. Modern Healthcare.

Cindy Snay, Owner\Pharmacist

11 East Main Street
 Warner, New Hampshire
603.456.3556
 Mon.-Fri. 9am-6pm & Sat. 9am-1pm



TINY ADS
 for business or personal 12 months: \$50, 1 month: \$6
email:bradfordbridge345@gmail.com

MONTHLY BRIEFING: Town Board Reports

(Continued from page 1)

BUDGET COMMITTEE

Budget Review The Committee reviewed budget proposals from the Community Action Program, Town Clerk/Tax Collector, and the police dept.

Thank You The Community Action Program thanked the town for the ongoing support they receive.

ROAD COMMITTEE

Cochran Hill The Committee reviewed an engineering proposal from Horizon Engineering regarding a water runoff issue on Cochran Hill. The Committee agreed that they saw little value in pursuing the expenditure as an existing engineering plan already exists and, until exploratory digging is done, it will be difficult to determine the appropriate steps that should be taken to correct the runoff issue with a cost-effective solution.

High Priority Road work projects were identified by the committee. Projects include culvert replacement on Pleasant View Rd., sealing work on Rowe Mountain Rd., paving projects on Marshall Hill Rd., Hogg Hill Rd., and Oakdale Rd., and bridge projects for the West Meadow Bridge and the Center Road Bridge.

ECONOMIC DEVELOPMENT COMMITTEE

Trails The committee has selected Bradford's recreational trails as the first project they will work on. The goal of the committee is to promote Bradford as a recreational destination. The three key objectives of the project are to map trails, improve and acquire new trails, and market trails.

Halloween The committee is exploring event ideas for the Halloween season. The KRES Bradford PTO, Brown Memorial Library, and Parks and Recreation have been invited to attend the January 9, 2020 EDC meeting to brainstorm ideas.

PLANNING BOARD

Preliminary Consult The Board conducted a preliminary consult for Map 6/Lot 103. Shay and Kyle Kelly appeared before the Board to discuss a proposed continuation of an auto repair shop on the property and looking for direction for their intentions to open a heavy-duty inspection station and a NAPA parts store. They would like to modify the overhead garage door into a store front. The Board informed them that this would require a site plan revision and explained the application process.

Public Hearing The Board will move forward with submitting a Warrant Article to update the Accessory Dwelling Units Ordinance. This ordinance would propose specific criteria needed for an ADU, managed via the Building Permit process, for an attached or detached unit. The Board will hold a Public Hearing on January 14, 2020 to review the proposed Ordinance.

Master Plan A full draft of the Master Plan is targeted for review on January 14, 2020.

ZONING BOARD OF ADJUSTMENT

Rules The Board approved the addition of a new rule to the ZBA Rules and Procedures related to communication with other Town entities.

Holiday Schedule Change The next meeting of the ZBA will be on January 8, 2020.

CONSERVATION COMMISSION

Accolades George Beaton was recognized at the Spirit of NH Volunteer Awards for his outstanding statewide stewardship efforts.

Complaint A complaint has been filed regarding vehicles in floodwater to the Warner River at the Twigs business site on Rte 103.

Bog Hotel Site The Conservation Commission is working with Mike Andrews to address the issue of access to his property from the hotel site by using large rocks to block entry.

Trail Maps The Conservation Commission is working with the Economic Development Committee on a trail map initiative.

Roads Doug Southard, Conservation Committee member, is acting as a liaison to the Bradford Road Committee. Doug has met with Bradford Road agent, Steve Hall to discuss Class VI Road issues.

LIBRARY TRUSTEES

Holiday Lights Thank you to Fritz Von Baren for his generous help in hanging the new holiday LED lights on the tree in front of the library.

We may no longer be called Cobble Pond but our fabulous Indian Food is still here! Take-out on Wednesdays and Fridays



BRADFORD MARKET

- Indian Spices & Indian Take-out Dishes
- Beer & Wine • Coffee • Sandwiches
- Snacks • Groceries • Sodas • Lottery Tickets
- Newspapers • Auto Supplies • Gifts • Toys • ATM



Mon.-Thurs. & Sunday 6am-9pm **938-2662** Friday & Saturday 6am-10pm

Route 103, Bradford, NH – We are your hometown convenience store!

Equipment The Trustees approved a motion to appropriate up to \$550 from the Special Projects fund for the purchase of a new computer tower.

**KEARSARGE REGIONAL
SCHOOL DISTRICT
SCHOOL BOARD**

Training The district completed a REAP/FLEX transfer request with the Department of Education to utilize and repurpose \$40,193.12 worth of Title IV grant funds and apply them to the 2019-21 Title IIa grant. As such, a new activity was entered into Title IIa that supports thirty teachers training in Competency-Based Education and related curriculum design for thirty hours of professional learning. This will assist teachers in advancing their efforts to bring Competency-Based Education systems to the district in a timely manner.

Graduation Date has been set for Saturday, June 13, 2020. This date will remain regardless of school cancellations.

Minutes of all meetings are on file at the Town Office and online at bradfordnh.org.

For an audio file (mp3) of the recordings of meetings, please visit <http://bradfordnh.org/mp3/>.

Some meetings are now streamed live – check website.

**Make a Difference in the
Warner River Watershed**

The time to get involved helping sustain the health of the Warner River, is right now! The Warner River Local Advisory Committee (WRLAC) is delighted to announce the availability of our on-line Survey to assess the various ways in which community members value and utilize the natural resources within the Warner River watershed spanning the towns of Bradford, Warner, Sutton, Webster and Hopkinton.

The survey is designed to enable residents of the Warner River watershed to speak-up about their utilization and interests in the watershed. If you have ever wondered how you could personally engage in the State and Federal permitting process and help protect the river, the WRLAC is the advisory organization for protecting the Warner River’s resources.

By participating in the survey, you will be making a significant contribution to making the WRLAC an effective agent for managing and preserving our precious natural resources. Get started now! Go to www.surveymonkey.com/r/WarnerLAC

**Managing Bradford’s
Municipal Waste**

Municipal solid waste is everything that cannot be recycled at the Bradford Transfer and Recycling Center. These combustible solid waste materials are placed into the compactor container and are shipped to Wheelabrator's waste-to-energy facility. Wheelabrator is a local energy ecosystem that uses up to 575 tons per day of post-recycled waste from homes and businesses in more than two dozen communities to produce enough power to supply the electrical needs of 14,450 New Hampshire homes, as well as its own operational needs.

By using waste materials as a fuel to produce electricity, this waste disposal is environmentally safe, reduces dependence on landfills to collect waste, and reduces dependence on fossil fuels to produce electricity. Many Bradford residents ask if this waste-to-energy process is truly an environmentally friendly system. The answer is “yes.” First, Wheelabrator’s process produces such high heat that many dangerous dyes and chemicals in the municipal solid waste are converted into non-toxic emissions, and, second, the facility has scrubbers that capture any remaining toxic emissions.

Bradford’s financial burden to discard its municipal solid waste is \$68.00 per ton to ship it to Wheelabrator. The recycling of all other items (cardboard, mixed paper, #1 and #2 plastics, glass, metals, aluminum, oil, batteries, and propane tanks, etc.) supports the viability of the other systems involved in our mandatory recycling efforts.

*Lois Kilnapp,
Transfer and Recycling
Center Manager*

**WALCO
MECHANICAL CO.**

Refrigeration, Heating,
Air Conditioning,
Electrical Contractors

Commercial • Industrial • Residential
Service • Sales • Installation

MAINTENANCE PROGRAMS
SYSTEM EVALUATIONS

938-2926

HELLO 2020

*I will stop worrying about
what everybody else thinks.*

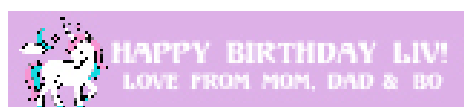
Caitlin Banaszack, Area Events

*I will do one thing at a time.
Like not starting a second
load of laundry until the first
is dry and folded!*

Leah Cummings, Graphic Design

I will savor every moment.

Don Moss, Advertising



Community Events Calendar

All events take place at the Bradford Area Community Center (938-6228) or the Mountain View Senior Center (938-2104) unless otherwise noted. Call to confirm dates and times in case any changes have been made.

~~~~~

## Wednesday, January 1

Closed for the Holiday

## Thursday, January 2

12:00 pm Noon Senior Dining  
 12:30 pm Mahjong Group, LR  
 6:30 pm Budget Committee, YR

## Friday, January 3

8:30 am Mt. View Senior Fitness  
 11:30 am 1st Friday Brunch, 50/50 Raffle  
 Noon Music Performance by Angela West

## Monday, January 6

10:00 am Children's Storytime, BML  
 10:30 am Children's Playgroup, BML  
 1:00 pm Bridge Group, SR  
 3:30 pm Driving School, LR

## Tuesday, January 7

10:00 am Stitches from the Heart Quilting  
 12:00 pm Noon Senior Dining  
 12:30 pm Mahjong Group, LR  
 2:00 pm Watercolor Class, SR  
 3:30 pm Driving School, LR

## Wednesday, January 8

9:00 am Mother's Group, LR  
 1:00 pm Knitting Group  
 3:30 pm Driving School, LR  
 7:00 pm ZBA Meeting, YR

## Thursday, January 9

12:00 pm Noon Senior Dining  
 12:30 pm Mahjong Group, SR  
 6:00 pm Econ. Development  
 6:00 pm Cemetery Commission  
 6:30 pm Budget Committee, YR

## Friday, January 10

8:45 am Mt. View Senior Fitness

## Monday, January 13

10:00 am Children's Storytime, BML  
 10:30 am Children's Playgroup, BML  
 1:00 pm Bridge Group, SR  
 3:30 pm Driving School, LR  
 6:00 pm Rural Heritage Connection, SR  
 7:00 pm Selectmen's Meeting, YR

## Tuesday, January 14

10:00 am Stitches from the Heart Quilting  
 12:00 pm Noon Senior Dining  
 12:30 pm Mahjong Group, LR  
 2:00 pm Watercolor Class, SR  
 3:30 pm Driving School, LR  
 7:00 pm Planning Board, YR

## Wednesday, January 15

9:00 am Mother's Group



~~~~~

Thursday, January 16

12:00 pm Noon Senior Dining
 12:30 pm Mahjong Group, SR
 5:00 pm BACC Governance, YR
 5:30 pm Parks and Rec, YR
 6:00 pm Econ. Development, SR
 6:30 pm Budget Committee, YR

Friday, January 17

8:30 am Mt. View Senior Fitness
 10:00 am Friday at the Movies: "RV"
 12:00 pm Noon 3rd Friday brunch
 6:00 pm We Need You!, BML

Monday, January 20

Closed for the Holiday

Tuesday, January 21

10:00 am Stitches from the Heart Quilting
 11:00 am LSVNA FREE BP Clinic
 12:00 pm Noon Senior Dining
 12:30 pm Mahjong Group, LR
 2:00 pm Watercolor Class, SR
 7:00 pm Supervisors of the Checklist, YR

Wednesday, January 22

9:00 am Mother's Group
 6:00 pm The Creative Process, BML

Thursday, January 23

12:00 pm Noon Senior Dining
 12:30 pm Mahjong Group, LR
 6:30 pm Budget Committee, YR

Friday, January 24

8:45 am Mt. View Senior Fitness

Monday, January 27

10:00 am Children's Storytime, BML
 10:30 am Children's Playgroup, BML
 1:00 pm Bridge Group, SR
 7:00 pm Selectmen's Meeting, YR

Tuesday, January 28

10:00 am Stitches from the Heart Quilting
 12:00 pm Noon Senior Dining
 12:30 pm Mahjong Group, LR
 2:00 pm Watercolor Class, SR
 7:00 pm Planning Board, YR

Wednesday, January 29

9:00 am Mother's Group
 6:00 pm Bessie's Story, BML

Thursday, January 30

12:00 pm Noon Senior Dining
 12:30 pm Mahjong Group, SR
 6:30 pm Budget Committee, YR

Friday, January 31

8:45 am Mt. View Senior Fitness

Ongoing Events

Mondays

10:00 am Children's Storytime, BML
 10:30 am Children's Playgroup, BML
 7:00 pm Selectmen's Meeting, YR every other week
 7:00 pm Rural Heritage Connection, BACC 2nd Monday/month

Tuesdays

7:00 pm Conservation Commission, BML 3rd Tuesday/month
 7:00 pm Fish & Game Club 1st Tuesday each month
 7:00 pm Planning Board, BACC 2nd & 4th Tuesdays/month

Wednesdays

6:00 pm Library Trustees, BLM 1st Wednesday/month
 7:00 pm Zoning Board, BACC 1st Wednesday/month

Thursdays

6:00 pm Cemetery Commission 2nd Thursday/month; call 938-2119
 6:00 pm Economic Development Group, BACC 2nd Thursday/month
 7:00 pm Road & Bridge Repair Committee, BACC, 4th Thursday/month

Fridays

11:30 am First Friday Brunch, MVSC call 938-2104 for reservations

Other

Historical Society Tin Shop, East Main Street; by appointment, call 938-2253

Calendar Abbreviations

BACC	Bradford Area Community Center
BCC	Bradford Community Church
BCMh	Bradford Center Meetinghouse
BML	Brown Memorial Library
FGC	Fish & Game Club
KLC	Kearsarge Learning Center
LSVNA	Lake Sunapee Visting Nurses Assoc.
LR	Learning Room
MVSC	Mountain View Senior Center
SR	Senior Room
YR	Youth Room
ZBA	Zoning Board of Adjustment

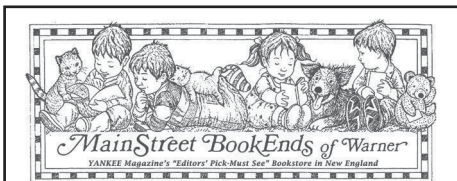


Bradford Community Church
A gateway to encounter God's love
 88 West Main Street, Bradford, NH
 603-938-5313

Our Sunday Services start at 10am
 Our nursery and Kingdom Builders (Sunday school) are held just after the beginning of our worship service. The first Sunday of each month we hold a Communion Service.

Saturday, January 25 from 5-7pm
 No charge Soup, bread and dessert in the Church vestry.

Thank you to all who donated to the Food Pantry during the holidays. Now that the holidays are over, don't forget that people are still in need throughout the year and in order to help the families, we could use your help. Donations can be mailed to the Bradford Community Church, PO Box 57, Bradford NH 03221 please memo: Food Pantry and make checks payable to Bradford Community Church. The Pantry is open the 3rd Wednesday each month from 5:30-6:30pm. For Emergency needs call 938-5313.



MainStreet BookEnds

www.mainstreetbookends.com

Store Info, Browse, Order Books & eBooks

Books and Toys

Visit *MainStreet MarketPlace & Gallery*
 Local Art, Products, a "Third Place" to Gather & Relax

OPEN EVERY DAY 9 ~ 6
100% Solar Powered!

16 E. Main St., Warner 603-456-2700
 ~ Cultivate Community ~ Shop Locally ~



★ AREA EVENTS ★
BRADFORD EVENTS

Friday January 10

Women's Moon Circles, 6-7:30pm at Evergreen Healing Arts, 11 West Main Street. All women are welcome. In January we will focus on self-image and have a clothing swap! Contact: Evergreen Healing Arts at 748-4330 or 603EHA@gmail.com.

Friday January 17

Civic Engagement Program, 6-7pm at Brown Memorial Library. Our town needs you! If you want to be more involved in Bradford, please join us at the library to learn more about different volunteer and civic positions around town. Contact: Ellen Barselle at 938-5562 or Devin Pendleton at devinpendleton505@gmail.com.

Wednesday January 22

The Creative Process Talk, 6-7pm at Brown Memorial Library. Sue Anne Bottomley will be here to relate her story of how her 2011 Draw-NH project turned into her book, *Colorful Journey*, published in 2014. Contact: Ellen Barselle at 938-5562.

Wednesday January 29

Bessie's Story Book Discussion, 6-7pm at Brown Memorial Library. Ashley, Tom, and Bessie (the dog) will be here to talk about their book *Watching the Lights Go Out*. To learn more prior to the program visit <https://www.bessiess-tory.com/>. Contact: Ellen Barselle at 938-5562.

NEIGHBORING EVENTS

Sunday January 12

Winter Magic Party, 4pm at Hopkinton Town Library in Contoocook. Come join tween authors Adi Rule and Erin E. Moulton for magical books, make-your-own pendants, edible wands, and a book sale signing. Ages 7-13 recommended. Contact: Hopkinton Town Library at 603-746-3663.

Monday January 13

Youth Mental Health First Aid Training, 8am-4:30pm at Colby Sawyer College. Presented by UNH Cooperative Extension. Ideally designed for adults who work with young people ages 12-18. Free but registration is required by January 6 at <http://bit.ly/20200113-ymhfa-colby-sawyer>. Contact: 603-863-9200.

Wednesday January 22

Warner Rail Trail & Story Walk, 6-7:30pm at the Gallery at MainStreet BookEnds in Warner. Join us for an update on the Rail Trail progress. Contact: MainStreet BookEnds 603-456-2700.

Sunday January 26

Muster Field Farm Museum Ice Harvest Day, 9am at Horse Beach, Kezar Lake in North Sutton. Volunteers will demonstrate ice cutting by gas-powered saw and finished by hand. Free admission, donations appreciated. Rain date February 2nd. Info, directions, and contact: 603-927-4276 or musterfieldfarm.com.

HAVE A LOCAL EVENT YOU'D LIKE TO SHARE? LET US KNOW!
BRADFORDBRIDGE345@GMAIL.COM

Available for
Casual Dining
Tuesday-Sunday

Appleseed
EST. 1977
RESTAURANT
AND CATERING

Come visit our
newly expanded
Tavern Room!

Tues.-Fri. 5-9pm, Sat. & Sun. 4-9pm and Sunday Morning Brunch 8:00am-Noon

Start the week with
our Sunday Breakfast
Buffet! 8am-Noon
\$11.99pp

938-2100
Check out our menu at
www.appleseedrestaurant.com
63 High Street, Bradford, NH 03221

Celebrating our 43rd year
of business in Bradford.
We buy local, hire local,
and support local
organizations

Out & About: Singing and Sledding

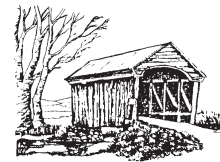


(Top) The Kearsarge Regional High School chorus students singing Christmas carols at the Bradford Community Center for the senior holiday luncheon. (Bottom) The Cummings family finds enough snow for sledding on the back hill. Down has always been more fun than up!



Many of you are enthusiastic about recording the beauty that surrounds us. Therefore, I'd like to invite photographers to share images to be included in this article. Of course proper credit will be given. The most interesting photographs will be from Bradford and close-by places. An accompanying caption would be nice. One last request is to submit the images in .jpg or .jpeg format.

Kathleen Bigford



The Bradford Bridge

LOCAL BUSINESSES:
 Would You Like to Reach More Customers?
ADVERTISE!
 & SUPPORT THE **BRADFORD BRIDGE**
 YOUR NON-PROFIT VOLUNTEER **Newspaper**
 REASONABLE RATES!
CALL 938-2230
 RATE CARD ONLINE:
 bradfordbridge.org
 email: bradfordbridge345@gmail.com

I will be kind.

Mary Keegan-Dayton, Board Member

I will slow down.

Kathleen Bigford, Editor

I will drink more water.

Laurie Buchar, Proofreader

enjoy the bridge in **COLOR!** bradfordbridge.org

Go Lightly Consignment

Womens Boutique 255 Newport Road
Home & Gallery New London, NH 03257
Men's Store

Open 7 Days a Week

www.golightlyconsignment.com



evergreen

HEALING ARTS

Yoga...Meditation...Massage

11 West Main Street, Bradford, NH 03221 (603) 748-4330
603eha@gmail.com www.evergreenhealingarts.org