

# The Bradford Bridge

COMMUNITY NEWS *for* NEIGHBORS *by* NEIGHBORS

## Monthly Briefing: Bradford Town Board Reports

### Board of Selectmen Appointments

Deputy Town Clerk/Tax Collector  
Laurie Colburn appointed at the request of Town Clerk/Tax Collector, Melissa Cloutier

Trustee of the Trust Fund  
Tandy Hartford appointed to fill the one-year vacancy

Timber Monitor Brooks McCan-dlish appointed

Road Committee Jim Pickman, Matt Ordway, Joe Messer, Nate Kimball, Road Agent Steve Hall, Selectmen's Representative Jason Allen

Part-Time Fire Chief Brian Duggan from Municipal Resources Inc. (MRI) outlined the process and the services they can provide – ‘deep dive’ background checks, job description, help with interview questions and others. It should be a collaborative approach with Fire Department involvement. The three Selectmen will be included in communications during the transition process with the Fire Department. The statute approved at Town Meeting, RSA 154:1,I(a), does not go into effect for one year so any appointment made this year would be for an interim part-time chief.

Town Hall Update The granite work is scheduled for May and must be completed prior to any backfill activity. Nate Kimball confirmed his “Gift in Kind” donation for the septic and landscape work. Bob Stewart, RCS Designs, said the expired septic plan can be easily resubmitted. Mike Bauer has volunteered to act as general contractor through completion of the ‘buttoning up’ of the building.

(Continued on page 12)



Thanks to the the Brown Memorial Library (left) and the Rosewood Country Inn (below) for two eggcellent free Easter events enjoyed by many local families!



## Ice Out! 2019

Lake Massasecum, Saturday, April 13, 2019

Lake Sunapee, Saturday, April 20, 2019

What is “Ice Out” and who makes the call? The Ice Out date is the official day of the year that a lake is clear of ice for navigation. Regarded as a harbinger of spring, Ice Out is eagerly awaited by owners of lake-front properties and many boaters. Each lake has its own Ice Out criteria. In the case of Lake Massasecum, the Ice Out date is the day a certain lakeside resident can row her canoe from her dock to the Bradford Casino. On Lake Sunapee, Ice Out is the day Georges Mills is clear. Lake Winnepesaukee’s Ice Out date is when the M/S Mount Washington can navigate between major harbors. As of this writing that lake is still iced.



# The Bradford Bridge

P.O. Box 463  
Bradford, NH 03221  
bradfordbridge.org  
bradfordbridge345@gmail.com

### BOARD OF DIRECTORS

Audrey V. Sylvester, President,  
Leslie J. Grey, Treasurer, Mary Keegan-  
Dayton, Secretary, Marcia Keller,  
Kathleen Bigford, Don Moss, Leah  
Cummings & Harriet Douglass

### EDITOR

Kathleen Bigford

### BUSINESS MANAGER

Leslie J. Grey

### SUBSCRIPTION/DISTRIBUTION

Harriet Douglass, Nola Jordan

### DESIGN

Leah Cummings, Graphic Artist  
Don Moss, Advertising Coordinator

### PRINTING

RC Brayshaw & Company, Inc.

### SUBSCRIPTION INFORMATION

To receive The Bridge by mail, please  
send a \$25 check to cover mailing costs  
to: P.O. Box 463 Bradford, NH 03221

### ADVERTISING

The Bradford Bridge is a free community  
newspaper supported by advertisers.

To place an ad, call  
Don Moss at 938-2230.

### SUBMISSIONS

The Bradford Bridge is written by neighbors,  
for neighbors. Anyone is welcome to  
submit articles and/or photographs of  
interest to the community. We reserve  
the right to edit submissions.

**THE FIRM DEADLINE FOR ALL ADS AND  
ARTICLES IS THE 20TH OF THE MONTH.**

## Town Offices

### SELECTMEN'S OFFICE

Phone: 938-5900

Monday - Thursday: 8:00 AM - 4:00 PM  
(closed 12 Noon - 1 PM)  
Friday: 8:00 AM - Noon

### TOWN CLERK/TAX COLLECTOR

Phone: 938-2288

Monday: Closed  
Tuesday: 8 AM - 12 PM/ 1 PM - 4 PM  
Wednesday: 12 PM - 6 PM  
Thursday: 8 AM - 12 PM/ 1 PM - 4 PM  
Friday: Closed  
2nd & 4th Saturday: 9 AM - Noon

### PLANNING BOARD HOURS

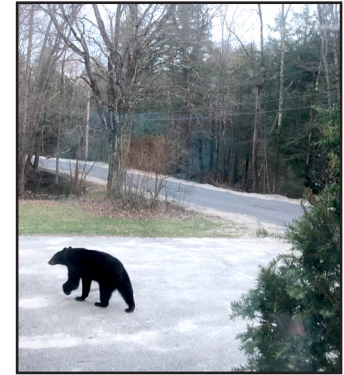
Office hours Tuesdays 3:00 - 6:00 PM

*Town offices are temporarily located at  
Bradford Area Community Center, 134 East  
Main St. P.O. Box 436. Bradford, NH 03221*

## From the Bridge

### Spring

Somewhere  
a black bear  
has just risen from sleep  
and is staring  
down the mountain.  
All night  
in the brisk and shallow restlessness  
of early spring . . .



~ Mary Oliver ~

This young one ambled into our yard on a recent evening and sent us scurrying out to check on our small flock of chickens. All was safe and s/he wandered into the trees toward other neighbors.

Signs of spring are never overrated, and this year, perhaps more than past years, hunger for what's next is in full force.

This edition of the Bridge holds

Images of Easter Festivities.

Lots of notices about events in Bradford and surrounding towns.

Evergreen details by Ann Eldridge, and

News of Evergreen Healing Arts.

A wrap up of town committee and board meetings thanks to the enduring efforts of Marcia Keller.

And much more including advertising from local businesses which supports this publication. Please buy local whenever possible.

Thanks for reading,

*Kathleen Bigford, Editor*

*And everyone who makes this publication possible*



## Sweet Beet Market

Committed to local.

Local food, all year!

seasonal produce • fresh baked goods  
fresh meat • seafood • dairy • eggs  
syrup • honey • jam • & more!  
SUPPORT LOCAL • SHOP SMALL



Spring Greens are in!

Sweet Beet Farm is harvesting  
regularly from the greenhouses.  
Come in to get your fill of farm  
fresh spring greens ... FINALLY!

Wednesday.-Friday: 9-6 • Saturday-Sunday: 9-5

11 West Main Street, Bradford NH • 603-938-5323



kearsargefoodhub.org



### Bravo Bradford Shining Stars



The Bradford Elementary School Shining Stars Theater Company put on a brilliant performance of "Seussical, Jr" last month! The cast featured 50 fourth and fifth graders (plus one first grader) and was led by artistic director Katie Perkins, musical director Matt Mitchell, and assistant director Caillyn Dezotell. Many parents and friends volunteered to create the colorful costumes and set that graced the KRHS stage. The musical was based on the works of Dr. Seuss and highlighted the values of confidence, compassion, and creativity. Great show! – Leah Cummings

### Dog Ordinance Reminder

The Town of Bradford Dog Ordinance was amended in 2012 for the protection of the citizens and the property within the Town of Bradford to include: All Dog handlers are required to control and remove any defecation for the safety, health and welfare of personnel using the sidewalks and designated area for sport and/or recreation and walking. This ordinance exempts service dogs.

Mandatory area: all sidewalks and Brown Shattuck Field. Failure to comply with this ordinance will result with first a warning from the police department, and then the imposition of a \$25 fine.



**COONEY ELECTRIC**  
 Licensed Master Electrician – New Hampshire & Vermont  
 Cell / text 603-748-3155  
 3rd-Generation Electrician – Family Owned Since 1926



Good weather brings walkers out to enjoy the sidewalks on East Main Street. Please do your part to ensure the walks are clean and pleasant.

### Public Notice

Lake Todd Village District  
2019 Annual Budget Hearing

In accordance with RSA 32:5.1, notice is hereby given that The Commissioners of Lake Todd Village District in the Towns of Bradford and Newbury, NH, will hold a hearing on a proposed budget for the District.

Date: Saturday, May 25th, 2019

Time: 9:00 AM

Where: Bradford Area  
Community Center

134 E Main Street, Bradford, NH

All persons, residents and non-residents of the Lake Todd Village District are invited and encouraged to attend.

Lake Todd Village District, PO Box 169, Bradford, NH 03221-0169

**We're your Hometown Bank.**  
 And we are proud to be a part of the local community. Count on us for all of your local banking and ATM needs. How can we help you?  
 Newport | Bradford (ATM) | Concord  
 Concord (ATM) | Grantham | New London  
 Sunapee | Warner | 800.562.3145  
 sugarriverbank.com  
 Member FDIC | EQUAL HOUSING LENDER  
 Like us on Facebook!



Sugar River Bank  
Est. 1895

### Bradford Planning Board seeks a Recording Secretary

This role averages 3 to 5 hours a week with 3 daytime hours each week as well as a requirement to attend Planning Board meetings on the 2nd and 4th Tuesday of each month at 7pm. Must be organized, self motivated and detail oriented. For more information, please contact Laurie Colburn at [recorder@bradfordnh.org](mailto:recorder@bradfordnh.org).

### 5 Reasons to Apply

1. You meet great people!
2. You'll learn a lot about what is happening in Bradford, Planning & Zoning and New Hampshire State laws related to Land Use.
3. It's a great way to earn some extra money.
4. You'll begin to have new appreciation for the value our volunteer members provide and may even be inspired to volunteer and participate in this fantastic community.
5. And the people are great.....

### Interstate 89 Detours

On April 16, 2019 the New Hampshire Department of Transportation (NH DOT) closed I89 Exit 5 to WEST-bound traffic and has detoured traffic to Exit 6. Traffic will take Rt 127 and continue to Rt 202&9. The only traffic detoured to Exit 9 and Rt 103 is oversized loads. These transports are done under permit and will be advised in advance of the detour. They will be routed from I89 Exit 9 west on State Rt 103 to State Route 114. According to NHDOT it is not expected to create any impact on local traffic.

The detour is expected to last from April 16 to some date in July. The EAST-bound traffic from Henniker towards Concord will be virtually unaffected.

# Library Lantern

## Brown Memorial Library

78 W. Main Street

bmlbradford@gmail.com

### Library Hours:

Monday 10:00am – 8:00pm

Wednesday 10:00am – 7:00pm

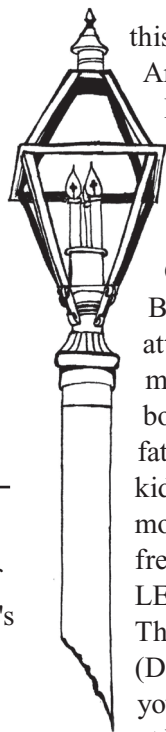
Saturday 10:00am – 3:00pm

Sunday 11:00am – 3:00pm

### From the Director's Desk:

The snow has finally melted off my lawn. I've noticed the robin's are also delighted with so much free, wet ground to hop over. I have also started hearing the cacophony of the frog songs. I know many of you are starting your gardens. I think of starting one, but then I never do. I'll enjoy fresh vegetables and fruit from Sweet Beets. I am also looking forward to Evergreen studios opening in May. I'm looking forward getting my porch ready for sitting, reading, and talking. One of my favorite things to do when it warms up a bit, is to wake up before my family, and enjoy my solitude outside with a hot cup of coffee in my hands. This is the closest I come to meditating, which I've tried over the years, but have not succeeded in. As much as I love socializing, too much of it depletes me, and time alone in the quiet is the only way my cup gets replenished.

Spring at the library has been great so far. We had fun painting wooden eggs with Marina Forbes and I learned so much about porcupines from Ann Eldridge and Bill Duffy. Did you know porcupines have a distinct smell to them? Some say it smells like turpentine? Thank you to the Conservation Committee for providing the program and the food. Also, our Easter Egg hunt was fun despite the rainy day. We had 85 people attend! Thanks everyone for coming out for



this community event. Thank you to Andrew Pinard, Friends of the Library, Laurie Buchar, and KRES Bradford fourth graders for helping to make the event successful.

On Saturday, May 4th, Becky Bense will be here to give 1:1 attention to families who want to make Mother's Day paper flower bouquets. We encourage caregivers, father's, grandparents to bring their kids to the library, make a present for mom, and give her an hour or so of free time. We are also hosting a LEGO program at the library through Think, Thinker, and Design company (Deb and Barry Connell). Some of you know them from their programs at Newbury Library. They're coming here on Wednesday, May 8th, May 15th, and May 29th from 3:30-5:00pm. Please call the library and sign-up if you are interested in attending either the paper flowers or after-school lego program.

Leslie and I have completed our third podcast. We are having fun reading and watching the same movies together and then reviewing them. We discussed *Pretend I'm Dead* by Jen Beagin and *Can you Forgive Me* directed by Marielle Heller. We also discuss our favorites from the library. Listen to the *Tall and Short of It* with Ellen and Leslie. You can find the podcast on Facebook or Podbean.

### New Business:

After being at the library for almost a year now, I have had the chance to thoughtfully look at the library and its days/hours. After discussing with the staff, looking through our annual statistics of who comes in the library and when, I have decided to change the days of the library. Starting June 1st, the library will no longer be open on Sundays but we will be open on Fridays. Specific details are still being determined. Once they are decided I will announce new hours through Face Book, our website, and in posters

around town. I really look forward to the benefits of the upcoming changes. I understand that closing on Sundays may be a disappointment to some, but I want to remind our patrons that we have reciprocity or the right to use Newbury Library as well. So, if you have a library card with us, you can also use Newbury library. Between Bradford and Newbury there will be a library open seven days a week in our area.

### Book Group:

For May, we will be reading *A Good Country* by Laleh Khadivi. This book is told from the point of view of a sixteen-year-old boy, Reeza, a son of Iranian immigrants. It's an illuminating story of how this boy goes from being a high achieving student doing normal teenage things to joining a radical cause and moving to Syria. I thought it was an excellent read and I believe it will leave our group with a lot to discuss. We have many extra copies of the book. So if you have thought, hmm, I might want to join a book group, please come! We have a great group of people right now.

### New Books:

#### Fiction:

*Altruists* / Andrew Ridker  
*American Agent* / Jacqueline Winspear  
*Celtic Empire* / Clive Cussler  
*My Lovely Wife* / Samantha Downing  
*Promise of Elsewhere* /  
 Brad Leithauser

#### Non-Fiction:

*Uninhabitable Earth* /  
 David Wallace-Wells  
*Mama's Hast Hug* / F.B.M. Waal

#### Poetry:

*Shout* / Laurie Halse Anderson  
*Like a Beggar* / Ellen Bass

#### Children / Youth:

*Tree of Dreams* / Laura Resau  
*We are the Gardeners* / Joanna Gaines  
*Great Job, Mom!* / Holman Wang  
*Internment* / Samira Ahmed

Ellen Barselle

www.tallpinesnh.com  
938-2366

Ann C. Hallahan,  
Broker/Owner  
Laura Hallahan,  
Associate Broker



**New Listing**

**STUNNING CONTEMPORARY**  
Tastefully remodeled w/modern amenities plus custom in-law suite  
Bradford \$438,500



**New Listing**

**COUNTRY RETREAT**  
Idyllic getaway or primary home, spacious rooms, detached garage  
Bradford \$198,500

1 Center Road, P.O. Box 525  
Bradford, NH 03221 603-938-2366

Located by the Bement Covered Bridge since 1988!

### New Library Exhibit

The Bradford Art Group presents a new exhibition in Brown Memorial Library: *“Body Work: Photographs by Bill Duffy”*. The exhibit continues through June.



Bill received a Bachelor of Fine Arts from the Massachusetts College of Art in 1976. He took courses in photography and majored in printmaking. After a long series of odd-jobs ranging from elevator operator to prosthetic limb maker, he returned to college and completed a Master of Science degree in marine geology from the University of Maine in 1989. Arts and sciences, he says he has an interest in both.

Bill writes that he is attracted to the dramatically lit and the subtly composed scene, the misplaced and ironically juxtaposed in particular. He is drawn to small-town places and their people as well as local landmarks. For more information, call: 938-5562.

**Belanger Home Improvements**  
Call John 938-2858

**WALCO MECHANICAL CO.**

Refrigeration, Heating,  
Air Conditioning,  
Electrical Contractors

Commercial • Industrial • Residential  
Service • Sales • Installation

MAINTENANCE PROGRAMS  
SYSTEM EVALUATIONS

**938-2926**

**LUMBER BARN**  
.com

**YOUR LOCAL LUMBER YARD & HOME CENTER**

Hardware • Paint • Tools • Doors  
Moulding • Windows • Lumber  
Roofing • Siding • Decking & Railing

**ONLINE ORDERING • FREE DELIVERY**

BRADFORD: (603) 938-5161  
GOSHEN: (603) 863-5601

*Large enough to meet your needs –  
small enough to care*

### Friends of the Brown Memorial Library

Thanks to all who participated in making this year’s Egg Hunt a success: Many thanks to the 4th graders at Bradford Elementary School for filling 800 eggs and to Leslie Grey who coordinated that effort. Also, thanks to children’s librarian, Laurie Buchar for reading stories to set the mood for the hunt, to Andrew Pinard who MC’d the event, and to all the volunteers who hid eggs and kept the hunters out of the road despite the rainy conditions. (see attached photo)

The Friends of the Library provide a range of programming trying to meet the varied interests of our community. To continue to provide compelling offerings, we need your help.

Many of our popular programs have relied on local expertise. Do you have a craft you can teach, a hobby you can talk about, or professional skills or experiences you would be willing to share?

We are also interested in your ideas for programming. Would you like to learn more about gardening, genealogy, cooking? Let us know your interests so that we can offer the programming you most want.

The Friends are grateful to the dedicated volunteers who help make sure our programs run smoothly. Volunteers are always welcome but we are especially in need of a couple of board members; since the Friends is a small organization, participating on the Friends board is a low-key way to give back to our community and gain leadership experience.

If you have expertise you’d like to share or if you have ideas for programming that you’d like the Friends to sponsor, please consider joining us for our annual meeting May 20 at 6:00pm at the library.

Contact [bmlibraryfriends@gmail.com](mailto:bmlibraryfriends@gmail.com) for more information.

### Adopt-a-Road

Bradford residents responded swiftly to a proposal to convert Bradford's Class VI roads into official ATV trails. In May of 2018, the Woodland ATV Club approached the Select Board to request permission to use several of Bradford's Class VI unmaintained roads in the southeast corner of town. Their stated future plans included ALL of Bradford's Class VI roads and the Class V (maintained) roads connecting them.

This network of ATV trails would involve the entire southern half of town, with considerable negative impact on abutting residents and landowners. It is important to note that the current level of ATV use by residents and landowners has not been a significant problem. However, designating Bradford's roads as official ATV trails which can be identified on the Internet would increase traffic considerably - as it has in other towns. A coalition of residents and the Bradford Conservation Commission (BCC) researched the issues and presented their findings, along with testimony from NH Fish and Game, to the Select Board in June. After significant discussion, the Select Board decided against approving the Woodlands ATV Club's request.

While the prospect of opening up most of southern Bradford to ATV riders from New England and beyond has diminished for the moment, there is still concern for the condition of our Class VI roads. Class VI roads are by law unmaintained by towns. Lack of maintenance, years of off-road riding, heavy lumber trucks, and general erosion have taken a considerable toll on many of these roads. Local residents often note that, "you used to be able to drive through there, but you can't anymore."

In an effort to assist the Town in quantifying/evaluating this problem, the BCC developed the Adopt-a-Road program. This program enlists resi-

dents who take responsibility for walking the old roads and monitoring them for excessive erosion, obstructions, garbage dumping, and off-road vehicle use. In late October, the BCC presented the Select Board with the initial Adopt-A-Road report (available on the town's website: [www.bradfordnh.org](http://www.bradfordnh.org) under the heading of the Conservation Commission). This first round of road monitoring by 19 residents uncovered problems with erosion, wetland issues, and road blockage. The BCC is currently in the process of developing recommendations to protect the roads, enhance non-motorized recreational use, and ensure abutting landowners' access. A second assessment of the roads will begin when the snow recedes in the spring.

The Bradford Conservation Commission continues to work with neighboring towns (Warner, Hillsborough, Henniker) that are also grappling with issues surrounding ATV and other off-road recreational vehicle use on their Class V and Class VI roads. There are several bills moving through the legislation at the State level aimed at ensuring that there is public notice and input whenever a proposal is put forth to convert a NH road to an ATV trail.

*Ann Eldridge  
Doug Southard*

### New Deputy Town Clerk

The new Deputy Town Clerk is Laurie Colburn. She has been the secretary for the Selectmen, Zoning, Budget and Planning boards for the past year. She



will no longer be the secretary for the Planning Board because she is now a member for the board.

However, she will continue to be the secretary for the other boards. She has been working in the Town Clerk office since March 19, 2019 and was sworn in as the Deputy on April 4, 2019. Laurie will complete her DMV training on May 15, 2019 and will then be able to register motor vehicles. She has already attended trainings for Tax and ElectioNet.

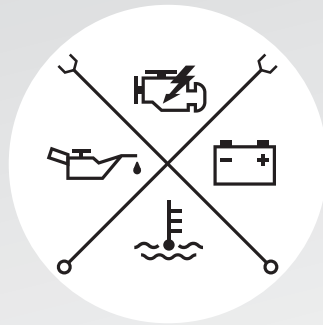
**Warner Pharmacy**  
*Old Fashioned Service. Modern Healthcare.*

**Cindy Snay, Owner\Pharmacist**

11 East Main Street  
Warner, New Hampshire  
**603.456.3556**  
Mon.-Fri. 9am-6pm & Sat. 9am-1pm

### **WE HAVE MOVED! Find Us Across From Kearsarge Regional High School**

### G&A AUTO



### *Complete Automotive Repair*

- ✓ **Summer Tire Changeover**
- ✓ **Computer Diagnostics**
- ✓ **Factory Scheduled Maintenance**
- ✓ **Alignment**
- ✓ **Tune-ups and oil change**
- ✓ **NH State Inspections**
- ✓ **10% Veterans Discount**

**603-938-5545**

G&A Automotive LLC 454 North Road, Sutton, NH 03273 [G.automotivellc@gmail.com](mailto:G.automotivellc@gmail.com)

## Bradford Police Department *Continued from April*

Lieutenant Edward Shaughnessy grew up in a family of Law Enforcement –



*Lieutenant Edward Shaughnessy*

Seven of his relatives were cops – his Dad a Police Sergeant in New York City, his uncle Tim a police officer in Jersey City. However, when Ed graduated from college in New Jersey with degrees in Business Management and Computer Science, he began his career working for Best Buy, moving from sales person to Department Supervisor. Turning down a promotion in New Jersey, he joined his girlfriend in NH so she could be closer to her family where they merged careers at Best Buy and their lives with a Labor Day wedding in 2008 overlooking Lake Winnisquam .

With jobs in different parts of the state, commuting became a problem, solved by consulting a map and choosing an in-between location – Bradford. One day in 2004, Ed stopped at the Bradford Town Hall, found there was an

opening in the Police Department, applied, was accepted and graduated from the Police Academy in 2005. He has been here since then, becoming a valued member of the Department and moving up in the ranks from Patrol Officer to Sergeant to Lieutenant. At the same time, he has contributed much to the community through coaching local sports. Recently he stepped in as President of Bradford, Newbury, Sutton Youth Sports. Ed started the D.A.R.E. Program at KRES in 2008 influenced, in part, by R.J. Novak, DARE Officer in Carteret, NJ where Ed was born and raised.

An important incentive for him to stay in Bradford and which also encourages other officers to remain here, is Bradford's membership in the 22-community SWAT team where Ed is currently the Assistant Commander. He attends the monthly training sessions and transmits the information to the other members of the Bradford Police Force. This gives the Department not only the understanding of how to deal with potentially dangerous situations, but provides Bradford with response from the SWAT when such events occur in Town.

Bradford was a good choice for the location and evolved into a good place to work. He enjoys the people, the work ethic in the town, and the 'mom & pop' businesses (although fewer than when he started). The current roster is a great team to work with, providing flexibility in scheduling to accommodate family concerns and events.

*Marcia Keller*

## Activity with a Purpose - Calling all Parents and Children

Save the Children Action Network (SCAN) invites you and your child to join us at the Village Cafe on Saturday, May 11 from 2 to 4 pm for a fun activity with an important purpose.

We will be decorating the fronts of postcards that will later be delivered to Senator Jeanne Shaheen encouraging her to advocate for increased funding to improve access to high-quality, affordable early childcare.

We'll supply everything you'll need, and the Cafe will provide refreshments. Just bring a smile and your creativity!

SCAN is the political advocacy arm of Save the Children (savethechildren.org). We are working to foster bipartisan support to ensure that all children have the opportunity to survive and thrive.

Did you know that 46% of working parents in New Hampshire live in childcare deserts? That means, that for every three children in the area who need childcare there is only one slot.

Did you know that the cost of infant care can be as much as college tuition?

Did you know that 90% of brain development occurs between the ages of 0 and 5?

Did you know that children who have high-quality child care are more likely to graduate from high school, attend college, and earn a higher income, and are less likely to get involved in criminal activity or have mental health problems?

Yeah, I didn't either.

Hope to see you there! If you have any questions or to RSVP, call or e-mail Barb Southard at 217-7988, [barbsouthard@gmail.com](mailto:barbsouthard@gmail.com).

### THANKS TO THE BRADFORD FIRE DEPARTMENT

Thanks to our fine Fire Department for responding to our flame and smoke adventure a couple of weeks ago. Professional, friendly and competent. It didn't hurt that they were all friends and neighbors, too. What a treat to live here! (If you don't count chimney fires.)

*Brackett and Connie Scheffy*

## Outside Evergreen Bog



I'm writing this in March and Bradford's newest business, Evergreen Healing Arts, won't be open until May. I went to the Bog to look at evergreens before the sometimesgreens leaf out. At an attitudinally low point in town, it holds on to the cold that settles off the surrounding hills. Bogs absorb heat slowly in spring which makes them temperature buffers in the summer as well as useful water sponges. In times of drought, wetlands affect local climate.

It's not hard to find green in a winter bog but the reasons for green are sometimes complicated. Nearly all plants sport some green at some point in their lives - that's where the magical chlorophyll makes carbohydrates out of not much more than air and water and burps out oxygen. The most obvious winter green is from the needley conifers. Their waxy coated needles have deeply inset breathing holes that duck down from the wind and these traits protect them from cold winds and desiccation. They can conserve nutrients and live in poorer soils than most deciduous trees. As long as they can shed the weight of snow and ice, they can find some opportunities for 'off season' photosynthesizing. Needles are dropped eventually but most hang on for multiple years – this is a big energy saver for a plant. Conifers pre-date the flowering trees by millions of years and their strategies still work here.

Meanwhile, there are other local

evergreens. Notable in the bog is that large and varied collection of the Heath family. Most hang on to their leaves and those leaves are specialized as well - furred or rolled and/or waxy for the same reasons as the conifers. There's lots of water in a bog but water retention is still an issue because much of the available water is nutrient poor and acidic from vegetation decaying in stagnant water. It's a 'physiological desert'. Water, water everywhere but not so good to drink. Rainwater and fog works for many plants if they're careful. The evergreenness of their leaves is akin to some desert plants and some plants may have originated in drylands and find that their strategies work in a bog as well.

However it all happened, evergreen plants get a jump on the growing season by having leaves in place.

The Bradford Bog Boardwalk begins as hemlocky damp woods with some pine and a few red maples. As the path quickly gets a little wetter, the boardwalk enters an unusual inland Atlantic white cedar swamp. At the sunny, snowless base of a cedar there's a square of thawed bright green garden. In it grows gold-thread, crowberry, several kinds of moss, and wintergreen. All but the mosses are Heath plants and all are busily photosynthesizing ahead of the season.

Further on black spruce are moving into the bog proper and a few balsam firs join the ranks. Lichens become more prolific and have harmlessly colonized all of the trees with flat encrustations, overlapping leaflets, or long branching streamers. They, too, are evergreen, though not always being very green about it. Lichens are fungi which lack those important food-producing chloroplasts but they've hijacked algae or sometimes bacteria to do their

bidding.

The bog mat is made of many species of the evergreen sphagnum moss. In slightly drier locations red or gold species predominate. Only the upper part of this moss is alive and functioning through the winter when it can. The lower part dies and at an incredibly slow rate becomes peat. It is essentially a non-renewable resource.

Sheep laurel, another evergreen heath, is tiptoeing into the bog at the edges. And still further on other heaths - leatherleaf, cranberry, and bog rosemary – have colonized. Blueberries and rhodora are recent inhabitants of the bog mat and are also heaths. They have opted to cast aside their summer leaves as has the wetland larch, an oddly deciduous conifer.

The greenness of evergreens is a balm for winter weary eyes but don't ignore your nose - that wonderful greeny smell is actually good for you. Conifers excel at sifting dust and pollutants from the air but the most wondrous offering is that they are defending themselves with volatile antimicrobial compounds. These chemicals defend the trees from pathogens and insects and these chemicals are health promoting for animals as well. This antibiotic breath has positive effects on hearts, lungs, and arteries. If you are looking for something healthy to do while waiting for the Evergreen Healing Arts to open shop, take a healing walk with evergreens.

*Ann Eldridge*

**NAUGHTON & SON  
RECYCLING, LLC.**

**RESIDENTIAL  
COMMERCIAL  
CONSTRUCTION  
RECYCLING SERVICES**

**603-938-2282**

[naughtonrecycling.com](http://naughtonrecycling.com)

**ROLL-OFFS: 15 TO 40 YARDS  
CONTAINERS 2 TO 10 YARD**

**603-938-5234**

[naughtonrecycling.com](http://naughtonrecycling.com)

**Transfer Station  
Recycling Services**

Jones Road • Bradford

**NRC**

**Naughton Recycling Center, LLC**



**Evergreen Healing Arts -  
May 1, 2019**

Evergreen Healing Arts is now open on the second floor of the Bradford Inn at 11 West Main Street! The mission is to provide a dedicated space for the community to cultivate wellness. The earth friendly studio and office create a clean and healthy atmosphere for all. The skilled and compassionate practitioners offer a variety of yoga and meditation classes, massage therapies, and educational workshops on natural health. The community outreach and work-exchange programs provide support for members of the community to attend these offerings at an attainable cost, or no cost at all.

*“We look forward to welcoming you in our beautiful new space. Your unique energy will help to make it feel like home.” -Leah Cummings, Director*

[www.evergreenhealingarts.org](http://www.evergreenhealingarts.org)  
Email: 603eha@gmail.com  
Phone: 603-748-4330

**From the Bradford  
Historical Society**

The Bradford Historical Society is preparing for an active season of events and programs. A contractor has started work on restoring the Tin Shop and the goal is to have this ready by the first part of June, giving us back our meeting place and areas of display for our collection. The Old Post Office building will become accessible, too, once much of the collection has been moved back to the Tin Shop. It has been used for storage due to the damage at the Tin Shop.

Meetings of BHS are open to all members and the public and are held on the 4th Wednesday of each month, May through October. Trustees have already been meeting in the off season to aid in planning for the year. We hope to encourage new and returning members with our events this year, and will keep you updated with these in the Bridge and our Facebook page.

BHS would like to sponsor the return of the flower boxes on main street that so enhanced Bradford when they were

out. We are looking for people to adopt one and look after it during the summer. If you are interested, please call 938-2119.

The first event for 2019 is a

Progressive Dinner fundraiser to be held on Friday, May 24, 5:00 - 9:00 pm. There are still a few tickets left. The five course meal will be held at various locations throughout Bradford. Tickets are limited to 35 and are \$35.00 each. For more information and tickets, please call Marge Cilley at 938-2253.

The humanities council will present a talk “New England Quilts and the stories they tell” on June 15th at 2pm by Pamela Weeks. This will be on the BHS campus (building TBD at a later date). Pamela uses the quilts to tell the history of the Civil War and industrial and women’s history.

A small committee of BHS members has joined the group MUSE which consists of local historical societies, museums etc. Together, they are working on the next big joint project which will feature the Concord to Claremont Railroad. Bradford was a stop on that route. This is quite an in-depth endeavor and we welcome anyone with any information or artifacts pertaining to the railroad to contact us. We will be having displays and events around this subject and welcome any help. These events will take place in 2020 but planning is now underway. Anyone wanting to help with this is very welcome to join the group.

We look forward to seeing you at an event soon!

*Tracey Quigley*





**MERRIMACK  
M  
COUNTY CUSTOMS LLC.**


***Welding - Fabrication***

- Railing & Stairs • Custom Fabrication
- Structural Work • CNC Metal Cutting

[www.merrimackcountycustoms.com](http://www.merrimackcountycustoms.com)

The Appleseed Restaurant & Catering –  
We're Affordable!



**Appleseed**  
EST. 1977  
RESTAURANT

Available for  
casual dining  
Tuesday–Sunday

---

Tuesday-Friday 5:00-9:00, Saturday & Sunday 4:00-9:00 and Sunday Morning Brunch 8:00am-Noon

**Come visit our newly expanded Tavern Room!**

**Our Sunday Breakfast Buffet is a great way to start the week! 8am-Noon \$11.99pp**

*Celebrating our 41st year of business in Bradford. We buy local, hire local, and support local organizations*

---

Check out our restaurant at [www.appleseedrestaurant.com](http://www.appleseedrestaurant.com)

**938-2100**

# Obituaries

## Richard Kennedy



Richard “Dick” Kennedy passed away March 31, 2019 at 94 years old. Dick was born in Stoneham Massachusetts to John and Marguarite (Fairfield) Kennedy. He had one brother, Robert who predeceased him.

After high school Dick volunteered to serve 3 years in the United States Navy. In later years he loved to share his stories of traveling the world and the Fleet Week shenanigans that he partook in - of which there were several. On May 11, 1949, Dick and Jean Nelson married in a simple and beautiful ceremony. They spent 70 years together raising 4 children: Michael, Karl, Daniel and Ann.

His career was varied with jobs working for a florist, driving an oil truck, teaching Driver’s Ed (which also produced amusing stories) and Polaroid Corporation. Upon retirement at 57, Dick and Jean moved to Bradford N.H. where they lived on Lake Massasecum. They spent the years traveling around together, spending time out West in the National Parks. Once they stopped traveling, he spent his time teaching himself the guitar and volunteering at local nursing homes.

He enjoyed playing classic folk songs, telling the semi-dirty joke and working out brain teasers. Frequently Dick could be found writing a new song,

learning a new chord. He enjoyed his family and being a grandfather - frequently remarking on “the mess we made!” at family gatherings. He is survived by six grandchildren; Jennifer, Sarah, Emily, Morgan, Michelle and Marshall. and two great grandchildren Tziporrah and Levi. His sense of humor, generous heart and whistle with a trill will be missed.

---

## Elsa Weir

Elsa (Winch) Weir, 98, of Southgate, South Newbury, died March 30, 2019, at Sullivan County Healthcare in Unity, NH.

She was born in Framingham, MA on March 24, 1921, the daughter of Fred E. and Emma (Borgesson) Winch. She graduated from Framingham High School and lived there until moving to South Newbury in 1974 where the family had owned property since 1966. While in Framingham, Elsa taught kindergarten and worked at the library. After moving to NH she was employed in the security office at New England College and at Brown Memorial Library until 2016. She was a member of the South Newbury Union Church. Elsa enjoyed reading, cooking, gardening, crafting and caning chairs.

Her husband, Ian D. Weir, died in 1989. She is predeceased by a brother, Fred Winch. She is survived by two sons and their wives, Cameron and Shirley Weir of South Newbury, NH and Andrew and Cindy Weir of Simi Valley, CA; grandchildren, Jennifer, Heather, Cody and his wife, Brittany and Cameron; four great grandchildren, Harvey, Lillian, Haley and Mason; nieces and nephews.

Services will be held at the convenience of the family. Memorial contributions may be made to Brown Memorial Library, 78 West Main Street, Bradford, NH 03221. Chadwick Funeral Service is assisting the family with arrangements.

## Doris M. Dunn

Doris M. Dunn, 83, formerly of South Newbury, passed away after several years of declining health at the Merrimack County Nursing Home on April 9, 2019.

She was born on July 7, 1935 in Boston, the daughter of Paul E. and Marjorie A. (Finn) Murphy. She graduated from Jamaica Plains High School in 1953. In 1954, she married the love of her life, Robert W. Dunn, one month shy of her 19th birthday. In 1961, they bought their first house in Medway, MA, where they raised five children. In 1975, they moved to Morse Hill Road in Newbury, NH. Robert died in January 1990. Doris remained in Newbury for 28 years before she moved to the Merrimack County Nursing Home.

Doris is predeceased by her parents, husband, Robert, and brother James F. Murphy. Her family includes three daughters Kathleen A. Dunn (Christine Burgess) of Canterbury, Laura M. Branch (Joe) of Newbury, Carolyn Valiquet (James) of Newbury; sons, Michael W. Dunn (Luci) of Bradford and James R. Dunn of Bradford; sisters Eleanor L. Plunkett of South Newbury and Virginia M. Grant of Belmont, MA; grandchildren, great-grandchildren, nephews, nieces and cousins.

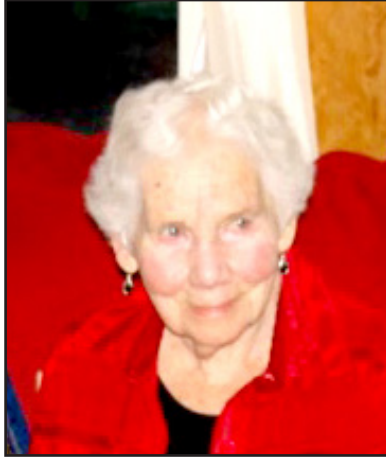
Private burial will be in Marshall Cemetery, Newbury, NH later in the spring.

Donations may be made to Catholic Charities NH, 215 Myrtle Street, Manchester, NH 03104 or Newbury Fire and Rescue Dept., P.O. Box 373, Newbury, NH 03255.

To sign an online guestbook please visit [www.chadwickfuneralservice.com](http://www.chadwickfuneralservice.com).



*Phyllis Wilcox*



Phyllis Wilcox, 93 years old, formerly of Bradford, died on April 4, 2019 in Parkland, Florida after a brief illness. She is survived by her husband, Brian, three daughters, Audrey, Robin and Marybeth and her son, Andy and his wife, Marianne as well as many grandchildren and great grandchildren.

Phyllis was born in Brooklyn, NY on December 17, 1925 to Rose and Theodore (Ted) Kohn. She was predeceased by an older brother, Bobby, who died in 1944, while serving in the Army Air Force. She married Morris (Dickie) Oxenhorn in 1944. Together they had three children before his death at the age of 41 years in 1961 leaving her with three young children. When her husband became

ill, she took classes at Brooklyn College to earn her BA and somehow found time to play on the college tennis team. She graduated at the top of her class in order to earn an income to support her family. In New Hampshire, she honed her writing skills as a writer/contributer for the Concord Monitor. She was a competitive tennis player well into her 80th year.

Three years after the death of her husband, Phyllis married a childhood sweetheart, Ed Lapin. They welcomed a daughter, Marybeth, in 1965. After divorcing, Phyllis married Brian Wilcox in 1976. They moved from Bradford to Parkland, Florida in 2016.

Phyllis loved reading, tennis, music and playing the piano. As an educator, she taught piano to students of all ages and managed an Adult Literacy Program that gave new hope to adults who were unable to read. She gave her time and energy to many Bradford projects including efforts to restore the town hall, chair of the Bradford Community Center, writing for many years for the Bradford Bridge (her column, 10 Questions) and supporting the Brown Memorial Library. She was a talented, witty and loving friend who has left behind an adoring husband and children she deeply loved and of whom she was proud. She suffered many tragedies in her long life and was a dear and treasured friend by those who knew her best. Rest in Peace, dear Phyllis. We will never forget you.



**Bradford Community Church**  
*A gateway to encounter God's love*  
 88 West Main Street, Bradford, NH  
 603-938-5313

**Sunday Worship Services and Kingdom Builders** (Sunday School)  
 Every Sunday at 10 am. Communion served on the first Sunday each month.

**Bradford Community Food Pantry** will be open on May 15, 5:30-6:30 pm

**Monday Night Bible Study** at 6:30 pm in the church office building. Back to the Basics - studying the book of Romans.

**Franklin Graham Decision America Northeast Tour** - Bring your family and friends to an exciting free event featuring live music by Crowder and a message of hope from Franklin Graham on May 23, 7:30 pm at Gill Stadium, Manchester NH

**Office Hours:**  
 Rev. Lynne E. Hubley, Pastor: Tues-Thurs 9 am-noon most days or by appointment.

Cheryl McDonald, Administrative Assistant: Tues-Thurs 9am-noon.

*Our offices are located to the right of the church in the white house.*

**Spiffing up your Garden?**

*Please consider donating your perennial divisions and/or seedlings to the*

**BROWN MEMORIAL LIBRARY**

**Book & Plant Sale**

**Saturday, May 25<sup>th</sup>**

Thank you! **9 am 'til 2 pm** We supply pots if needed.



78 W. Main St., Bradford  
 Enter at the Church Street entrance.  
*Proceeds from this event help fund library improvements such as our new LED lights.*



at Newbury Harbor

*...remember what we always say at Bubba's:  
 "We're having a lot of fun..."*

976 Route 103, Newbury, NH • 603-763-3290 • bubbahmplt@tds.net • bubbasbarandgrille.com

## Monthly Briefing: Bradford Town Board Reports

*(Continued from page 1)*

**A tour of the building** will be arranged with Bauer, the Selectmen and Town Hall Architect Jay Barrett, if he is available. A Town Hall Committee will be appointed to assist with the planning.

**Open Space** Ann Eldridge presented information gathered by the Conservation Commission on the tax rate effect of open space conservation. The Trust for Public Land found, in a recent study focusing on NH, that every \$1 invested in land conversation returns \$11 in economic benefits to the State based on tourism, outdoor recreation, water and air quality, sustaining wildlife and scenic beauty. The average cost of community services is less for open space than for residential use of the land.

**Selectmen's Meeting Time** Sue McKeivitt expressed frustration with the lack of a decision on her request to change the starting time from 7:00pm to 6:00pm. A decision as to whether the hour should be adjusted will be made at the May 20th meeting.

**Selectmen's Compensation** The Board voted to reduce their salaries to \$1000 per Selectman for this year and to revisit the subject during budget time.

**Merit Pay** Goals will be developed for this program for Department Heads. Employee compensation is based on reviews done by the Department Heads.

**Bement Bridge** Hoyle, Tanner & Associates will initiate a waiver appeal with DES for the shoreline permission needed.

**Mold Remediation** at the Highway Shed was discussed. There has been a lack of response or interest in the job. A Request for Proposal (RFP) will be published in a local paper requesting proposals by May3rd.

**Junkyard** A License Renewal was approved for "Larry's Salvage" on Fortune Road.

**Intents to Cut** Signed for Map 4/Lot 15, West Road; Map 4/Lot 32, Old Mountain Road; Map 13/Lot 22, Craig Road; Map 13/Lot 19, Penhallow Road.

**Intent to Excavate** Signed by the Board for Map 7/Lot 26, Pleasant Valley Road.

### **Zoning Board of Adjustment**

Officers Brooks McCandlish, Chair and Ken Parys, Vice-Chair. Bill Duffy and Bob Hodges were appointed Alternates.

### **Budget Committee**

Officers Marlene Freyler, Chair and Mark Fournier, Vice-Chair. The vacancy created when Laurie Colburn stepped down remains to be filled.

### **Planning Board**

Officers Pam Bruss, Chair and Claire James, Vice Chair. Laurie Colburn was welcomed as a new member. Michael James is Selectmen's Representative. Doug Troy was appointed as an Alternate.

**Zoning Consideration** Brooks McCandlish provided the Board with insight on how the Zoning Regulation for the Conservation District was established. Several approaches were considered with the 1,200' elevation chosen. This definition is easy to measure and works well for the topography in Bradford. Overlays such as the need for "buildable" acres and the Wetland Ordinance further conserve the land.

**Central New Hampshire Regional Planning Commission** Jim Bibbo's term as one of Bradford's commissioners runs through June. Commissioner Harry Wright will be asked to update the Planning Board on activity underway at CNHRPC.

**Site Plan** Unless, LLC, 11 West Main Street, submitted a Site Plan Modification to expand parking from 11 to 23 spaces to support the addition of 4 business spaces on the 2nd floor of the building. The Planning Board granted approval with the condition that a revised Site Plan is received showing the additional parking locations and layout, stamped and dated by the engineer.

### **Conservation Commission**

**Class VI Roads** Road Agent Steve Hall discussed Class VI road issues with a view to developing policies/ordinances to better protect these roads from damage, understanding that continuing supervision and administration by the Road Agent would be required. A new draft Class VI road policy and ordinance is under development by the Conservation Commission and will be shared with the Road Agent and Road Committee before submitting it to the Selectmen for their consideration.

**Junk** George Beaton reported on two properties with un-licensed junk and ruined buildings. One on Forest Street

has been purchased by an abutter who has contracted to have it cleaned up. An abutter has made an offer for the old school house lot on Dunfield Road, which includes a commitment to clean it up. This lot, Map 9/Lot 42, is owned by the Town and as approved at Town Meeting in 2018, the property must be sold utilizing a competitive bid process.

**Wetland Applications** Under new DES Wetland rules, Conservation Commissions still has the opportunity to comment on wetland applications, but with a limited response time. George Beaton. Seth Benowitz and Ann Eldridge were delegated as a sub-committee to review incoming Wetland Applications and make recommendations to DES on behalf of the Conservation Commission.

**Warner River Local Advisory Board** Ken Milender was elected Chair and Bruce Edwards Vice-Chair of the Board and bylaws were adopted. Ken heads up the local Volunteer River Assessment Program (VRAP).

### **Library Trustees**

Officers For the coming year Patty Furness, Chair, Annette Leonas, Treasurer, Sandy Wadlington, Secretary.

**Library Director** Ellen Barselle reported growth in all aspects of library usage. Attendance at programs has been higher including the Monday morning Story Hour. The Pajama Party was a huge success.

## Henniker Veterinary Hospital

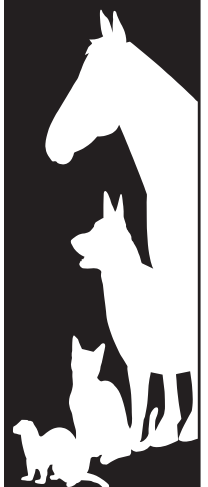
Small Animal &  
Equine Practice

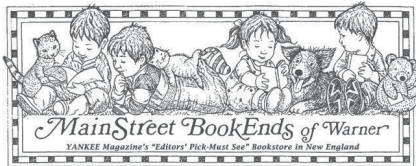
Alyssa J. Brust, DVM  
Robert A. Brust, DVM  
Amy Jones, DVM  
Sarah Kehoe, DVM  
Elizabeth Forbes, DVM

House Calls Available

**428-3441**

Maple Street, Henniker





**MainStreet BookEnds**

[www.mainstreetbookends.com](http://www.mainstreetbookends.com)

Store Info, Browse, Order Books & eBooks

**Books and Toys**

Visit MainStreet MarketPlace & Gallery  
Local Art, Products, a "Third Place" to Gather & Relax

**OPEN EVERY DAY 9 ~ 6**  
**100% Solar Powered!**

16 E. Main St., Warner 603-456-2700  
~ Cultivate Community ~ Shop Locally ~

Kudos from the Trustees to Ellen, Laurie Buchar, Leslie Grey and Maggi Ainslee for their creativity and enthusiasm in developing activities and for providing a welcoming environment for the families of Bradford.

Library Hours After lengthy discussion, a motion was made and accepted to change the current hours. Beginning in June the library will be open Mondays, Wednesdays, Fridays and Saturdays. Hours to be announced. The library will be closed on Sundays.

Minutes of all meetings are on file at the Town Office and online at [bradfordnh.org](http://bradfordnh.org).

For an audio file (mp3) of the recordings of meetings, please visit <http://bradfordnh.org/mp3/>

**Highway Department – Road and Bridge Repair Committee**

The Town of Bradford is looking for volunteers with knowledge and experience in road maintenance to serve on the newly created Road and Bridge Repair Committee. The Committee's goal is to create and maintain a Town road and bridge management plan and to advise the Select Board on maintenance, repair and construction of all Town roads. Interested parties should contact Road Agent Steve Hall at 938-5916.

**Highway Department – Water Street Repair**

The Highway Department is planning to explore and temporarily address the drainage issues at the north end of Water Street (near the base of Cochran Hill). As the work will include digging an open ditch, Water Street will be closed at that intersection during the day (to be re-opened at night). This work is expected to be done in late June and take approximately three days.

**Selectmen's Office – Town Hall Committee**

The Selectmen are seeking volunteers to serve on a Town Hall Renovation Completion Committee. Tasks will include the development and implementation of a plan to finish the renovation of Town Hall in the most efficient way possible. Interested individuals should contact Town Administrator Karen Hambleton at 938-5900 or [administrator@bradfordnh.org](mailto:administrator@bradfordnh.org).

**Parks & Recreation – French's Park Cleanup**

With winter finally behind us, volunteers are invited to join Parks & Recreation for the annual French's Park Clean up to be held on Saturday, May 18th at 9:00 am. Bring your work gloves and a rake. Many hands will make light work as we prepare our beautiful Town beach for summer. Questions? Contact Karen Hambleton 938-5900 or Margaret Raymond at 938-5392.

**WALKER**  
AUTOMOTIVE  
Quality < Dependable > Friendly  
Automotive Service & Repair



603-526-4848  
Rt 11, Wilmot, NH  
Major & Minor Repairs Foreign & Domestic Vehicles  
[www.WalkerAutomotiveInc.com](http://www.WalkerAutomotiveInc.com)

Convenient locations throughout  
New Hampshire and Vermont.



**BAR HARBOR**  
BANK & TRUST

[www.BarHarbor.bank](http://www.BarHarbor.bank) • 888-853-7100  
Member FDIC Equal Housing Lender

**Ayer & Goss**  
FUELS



**24 HOUR SELF SERVICE  
GASOLINE & DIESEL PUMPS**

Serving the area's heating needs for more than 60 years  
FUEL OILS & LP GAS / COMPLETE HEATING SERVICE  
**938-5335**  
Route 114, Bradford • Hall Ave., Henniker . . . 428-3333

**PIZZA CHEF**

**Delicious Pizza!**  
Dine in, call ahead, or get it **DELIVERED!**  
Appetizers, Subs, Salads, Dinners and more!

**(603) 938-2600**



14 Flavors of Premium Ice Cream



Slices available all day

**Daily Lunch Specials**

Located at the corner of Rte. 103 & Main - Bradford, NH

**Hugo's Electric, Inc.**  
Licensed & Insured  
RESIDENTIAL • COMMERCIAL  
938-5573  
3191 State Rte 114, Bradford

# Community Events Calendar



All events take place at the Bradford Area Community Center (938-6228) or the Mountain View Senior Center (938-2104) unless otherwise noted. Call to confirm dates and times in case any changes have been made.

## Wednesday, May 1st

3:30 pm Driving School, LR  
7:00 pm Zoning Board, YR

## Thursday, May 2nd

12:00 pm Noon Senior Dining  
12:30 pm Mahjong Group, SR

## Friday, May 3rd

8:45 pm Mt. View Sr. Ctr. Fitness  
11:30 am Cinco de Mayo Brunch, 50/50 Raffle, Noon music performance by Jan Rosen

## Monday, May 6th

8:45 am Mt. View Sr. Ctr. Fitness  
10:00 am Children's Storytime, BML  
10:30 am Children's Playgroup, BML  
1:00 pm Bridge Group, SR  
3:30 pm Driving School, LR  
7:00 pm Selectmen's Meeting, YR

## Tuesday, May 7th

10:00 am Stitches from the Heart  
12:00 pm Senior Dining  
12:30 pm Music performance by Brian Murphy  
12:30 pm Mahjong Group  
2:00 pm Water Coloring Class, SR  
3:30 pm Driving School, LR

## Wednesday, May 8th

1:00 pm Knitting Group  
3:30 pm Driving School, LR

## Thursday, May 9th

12:00 pm Noon Senior Dining  
12:30 pm Mahjong Group, SR  
5:00 pm BACC/P&R Committees, SR  
6:00 pm Economic Development, YR  
6:00 pm Cemetery Commission  
6:00 pm Paint Night Fundraiser

## Friday, May 10th

8:45 am Mt. View Sr. Ctr. Fitness

## Monday, May 13th

8:45 am Mt. View Sr. Ctr. Fitness  
1:00 pm Bridge Group, SR  
3:30 pm Driving School, LR  
6:00 pm Rural Heritage Connection, SR  
7:00 pm Selectmen's Meeting, YR

## Tuesday, May 14th

10:00 am Stitches from the Heart  
12:00 pm Noon Senior Dining  
12:30 pm Mahjong Group, LR  
2:00 pm Watercolor Class, SR  
3:30 pm Driving School, LR  
7:00 pm Planning Board, YR

## Wednesday, May 15th

3:30 pm Driving School, LR

## Thursday, May 16th

11:00 am LSVNA Blood Pressure Clinic  
12:00 am Noon Senior Dining  
12:30 pm Mahjong Group, SR  
6:30 pm Budget Committee, YR

## Friday, May 17th

8:45 am Mt. View Sr. Ctr. Fitness  
10:45 am Friday at the Movies: "Shall We Dance?"  
12:00 pm 3rd Friday Brunch

## Monday, May 20th

8:45 am Mt. View Sr. Ctr. Fitness  
10:00 am Children's Storytime, BML  
10:30 am Children's Playgroup, BML  
1:00 pm Bridge Group, SR  
3:30 pm Driving School, LR  
7:00 pm Selectmen's Meeting, YR

## Tuesday, May 21st

10:00 am Stitches from the Heart  
12:00 pm Noon Senior Dining  
12:30 pm Mahjong Group, LR  
2:00 pm Watercolor Class, SR  
3:30 pm Driving School, LR  
7:00 pm Conservation Comm., BML

## Wednesday, May 22nd

Trip to Waterbury, VT. for a Ben & Jerry's Factory Tour and then on the Cabot Farmer's Store, followed by lunch. Please call Darcy at 938-2104 to sign-up in advance.  
3:30 pm Driving School, LR

## Thursday, May 23rd

12:00 pm Noon Senior Dining  
12:30 pm Mahjong Group, LR

## Friday, May 24th

8:45 am Mt. View Sr. Ctr. Fitness

## Saturday, May 25th

8:30 am Lake Todd Village District  
10:00 am BML Plant and Book Sale

## Monday, May 27th

MVSC and Brown Memorial Library are closed in observance of Memorial Day. No Senior programs, Meals On Wheels or Bus Service today.  
1:00 pm Bridge Group, SR  
3:30 pm Driving School, LR  
7:00 pm Selectmen's Meeting, YR

## Tuesday, May 28th

10:00 am Stitches from the Heart  
12:00 pm Noon Senior Dining  
12:30 pm Mahjong Group, LR  
2:00 pm Watercolor Class, SR  
3:30 pm Driving School, LR  
7:00 pm Planning Board, YR

## Wednesday, May 29th

3:30 pm Driving School, LR

## Thursday, May 30th

12:00 pm Noon Senior Dining  
12:30 pm Mahjong Group, SR

## Friday, May 31st

8:45 pm Mt. View Sr. Ctr. Fitness

## Saturday, June 1st

Yard Sale at Mountain View Sr. Ctr.

## Ongoing Events



### Mondays

10:00 am Children's Storytime, BML  
10:30 am Children's Playgroup, BML  
7:00 pm Selectmen's Meeting, BACC  
7:00 pm Rural Heritage Connection, BACC, 2nd Monday/month

### Tuesdays

7:00 pm Conservation Commission, BML, 3rd Tuesday/month  
7:00 pm Fish & Game Club  
1st Tuesday each month  
7:00 pm Planning Board, BACC  
2nd & 4th Tuesdays/month

### Wednesdays

6:00 pm Library Trustees, BLM  
1st Wednesday/month  
7:00 pm Zoning Board, BACC  
1st Wednesday/month

### Thursdays

6:00 pm Cemetery Commission  
2nd Thursday/month;  
call 938-2119

### Fridays

11:30 am First Friday Brunch, MVSC  
call 938-2104 for reservations

### Other

Historical Society Tin Shop, East Main Street;  
by appointment, call 938-2253

## Calendar Abbreviations

<b>BACC</b>	Bradford Area Community Center
<b>BCC</b>	Bradford Community Church
<b>BCMh</b>	Bradford Center Meetinghouse
<b>BML</b>	Brown Memorial Library
<b>FGC</b>	Fish & Game Club
<b>KLC</b>	Kearsarge Learning Center
<b>LSVNA</b>	Lake Sunapee Visting Nurses Assoc.
<b>LR</b>	Learning Room
<b>MVSC</b>	Mountain View Senior Center
<b>SR</b>	Senior Room
<b>YR</b>	Youth Room
<b>ZBA</b>	Zoning Board of Adjustment



## LAZY SUNDAY CLEANING

Amanda Leo 603-938-2558

Our goal is to give families more time together, help the busy homemaker, and reach the places some can't.

email: [LazySundayCleaning@outlook.com](mailto:LazySundayCleaning@outlook.com)

Fully Insured & Guaranteed • 15 Years Experience

## Area Events

### BRADFORD

**May Day Celebration**, Hosted by Silver Hill Farm Home Schoolers, Wednesday, May 1, 10 am to noon, Bradford Center Meetinghouse.

**An adaptation of A Midsummer Night's Dream by William Shakespeare**, Thursday, May 2, at 11 am (excerpts), 12:30 and 6:30 pm (full performance) at the Outing Club stage in New London. Free and open to the public. The Court Scene by Laurie Buchar which will be performed prior to the play at 11 am on May 2.

**Mother's Day Paper Flower Bouquets**, Saturday, May 4, 12 - 3 pm at Brown Memorial Library. Becky Bense will give 1:1 attention to families who want to make Mother's Day paper flower bouquets. We encourage caregivers, father's, grandparents to bring their kids to the library, make a present for mom, and give her an hour or so of free time. Contact Ellen Barselle at 938-5562 to sign up in advance.

**LEGO Program**, Wednesdays, May 8, May 15, and May 29, 3:30 - 5 pm at Brown Memorial Library. Hosted by Think, Thinker, and Design company (Deb and Barry Connell). Contact Ellen Barselle at 938-5562 to sign up in advance.

**Paint Night Fundraiser**, Thursday, May 9, 6 pm at Mountain View Senior Center, 134 East Main Street. Guided canvas painting with local artists: Rebecca Bense and Sandra Wadlington. Walk away with a completed piece of art! First-time painters are welcome. Space is limited. Please call 938-2104 to register. Cost is \$25/person. Proceeds benefit Community Action Program Belknap-Merrimack Counties Inc. Contact: Darcy Little 938-2104.

**Book Group**, Wednesday, May 15, 7 pm at Brown Memorial Library. For May, we will be reading *A Good Country* by Laleh Khadivi. Find your copy at the library! Contact: Ellen Barselle 938-5562.

**Friday at the Movies** "*Shall We Dance?*", Friday, May 17 at 10 am followed by Brunch at noon at Mountain View senior Center. Richard Gere and Jennifer Lopez star in this delightful comedy with a sizzling all-star cast! Contact: Darcy Little 938-2104.

**The Bradford Fish and Game Club Annual Kids' Trout Fishing Derby**, Sunday, May 19, 8 - 10 am at Fishersfield Park in Newbury. It is on Old Post Road across from the Transfer Station. The pond is a short walk from the parking lot into the woods! This tournament is for children 15 years old and younger, but the whole family is invited to come out and enjoy the morning. Morning snacks and drinks will be provided. Free registration begins at 7:15 am. The fishing starts at 8 am and continues to 10 am. Prizes to be awarded shortly after 10:30. Prepare for weather and seasonal flying insects! Contact: Craig Angeli 927-4005.

**Trip to Waterbury, Vermont for a Ben and Jerry's Factory Tour**, Wednesday, May 22, 9 am at Mountain View Senior Center, 134 East Main Street. We'll carpool from Bradford at 9 am. Cost for the tour is \$3 per senior. Lunch is on your own. Contact Darcy at 938-2104 to sign-up in advance.

**Bradford Historical Society Progressive Dinner Fundraiser**, Friday, May 24, 5 - 9 pm, Contact Marge Cilley, 938-2253 for tickets and information.

### WARNER

**Click and Joanie Horning in Concert**, Saturday, May 4, 7 - 9 pm at MainStreet Warner Gallery. New London-based singer, guitarist and composer Click Horning will be joined by Joanie Horning on bass and rhythm guitar. \$10 suggested donation at the door. Contact: 456-2700.

**Pillsbury Free Library's Book Nook Theater group presents "School Lunch!"**, Saturday, May 4, 4 pm, at Warner Town Hall. A play based on the book by Warner resident True Kelley. It is produced by Children's Librarian Susan Matott and actors are local children. The script was written by Emma Swanson. Admission price is a donation of cash or items for the Warner Area Food Pantry. Refreshments will be available for a donation to the library. Contact: Nancy Ladd 456-2289.

**Lyme Awareness**, Sunday, May 5, 2 pm at the Gallery at MainStreet BookEnds. Lynn Durand, MD joins author Dana Biscotti Myskowski for an informational discussion around Lyme Disease. Contact : 456-2700.

**Beth Krommes**, Friday, May 31, 3 pm at the Gallery at MainStreet BookEnds. Come see Caldecott Medal winning artist Beth Krommes. Contact: 456-2700.

**Spring into Warner, Jump into the Arts**, Saturday, May 18, 9 - 3 pm in downtown Warner. Warner's 12th annual arts celebration. Art and craft demonstrations, performances, music, farmer's market and more. Contact: Kearsarge Area Chamber of Commerce.

**Edible Books Contest**, Saturday May 18, 9:30 - 1:30 pm at the Pillsbury Free Library in Warner. Anyone can enter by creating something edible that is somehow book related. Please see the rules and event description at Facebook.com/PillsburyFreeLibrary or www.warner.lib.nh.us. Contact: Nancy Ladd 456-2289.

### NEW LONDON

**Child Benefit Dinner**, Thursday, May 30 at the New London Inn. Please call the New London Inn directly to make reservations. A portion of the proceeds of the evening will be given to Ausbon Sargent for land preservation! Contact: Kristy Heath 526-6555.

### CONTOOCCOOK

**Model Railroad Show**, Saturday, May 4, 10 to 3 am at Hopkinton High School. Lots of vendors, operating layouts, new/used model trains and accessories, raffles, food, and more. Contact: Keith Wallace 601-530-6601.

*We may no longer be called Cobble Pond but our fabulous Indian Food is still here! Take-out on Wednesdays and Fridays*



## BRADFORD MARKET

- Indian Spices & Indian Take-out Dishes
- Beer & Wine • Coffee • Sandwiches
- Snacks • Groceries • Sodas • Lottery Tickets
- Newspapers • Auto Supplies • Gifts • Toys • ATM



Mon.-Thurs. & Sunday 6am-9pm **938-2662** Friday & Saturday 6am-10pm

Route 103, Bradford, NH – We are your hometown convenience store!



Many of you are enthusiastic about recording the beauty that surrounds us. Therefore, I'd like to invite photographers to share images to be included in this article. Of course proper credit will be given. The most interesting photographs will be from Bradford and close-by places. An accompanying caption would be nice. One last request is to submit the images in .jpg or .jpeg format.

*Kathleen Bigford*



**Bobcat Visitor**

I've been envious of those who have submitted pictures of bobcat sightings on their land, and wondered when we might see a bobcat here on Hogg Hill. Well, for the past week, we've had a bobcat as a regular visitor. A couple pictures are attached. Sadly, I shot them through a window with a screen, so they're not as clear as I would like. And, for that matter, the bobcat wasn't much for posing. . . Still, though, it was nice to get a these pictures at close range.

*Randy Thompson*



The Bradford Bridge

**CLASSIFIED**

Deaths in my family have left me with MUCH to sell: Antiques large & small; Lots of Christmas ornaments & decorations; LuRay Pastels; many Tea pots & ceramics; Two CPAP machines & NEW supplies; art, miniatures, collectibles; DVDs, VHS, Books & lots more. Call 938-2603

*Classified ads are free to individuals offering personal items for sale that are under \$250. Text only. Businesses are not eligible. Deadline is the 20th of the month, email your ad to: bradfordbridge345@gmail.com*



**Kisakanari  
Grass-fed Lamb**

*"You won't regret it"*

available at

*Sweet Beet Market*

(or call *Janet or Brooks* 938-5354)

**evergreen**  
HEALING ARTS  
www.evergreenhealingarts.org

- SUNDAYS **Meditation** 8-8:30AM | NO COST
- SUNDAYS **Slow Flow** 8:30-9:45AM | \$10
- MONDAYS **Yoga & Meditation** 8-9:15AM | \$10
- TUESDAYS **Kids Yoga** 3:30-4:30PM | \$10
- TUESDAYS **Restorative** 6-7PM | \$10
- WEDNESDAYS **Hatha** 5-6PM | \$10
- THURSDAYS **Open Studio** 2-4PM | NO COST
- THURSDAYS **Vinyasa** 6-7PM | \$10
- FRIDAYS **Yin** 6:15-7:15PM | \$10

11 West Main St, Bradford, NH 03221 603-748-4330  
603eha@gmail.com

ROCK MAPLE NURSERY  
**Annuals, Perennials,  
Bark Mulch**  
CHARLIE SPAULDING 938-5955  
2230 Route 114, Bradford, NH 03221

**The Village Café**

11 West Main St,  
Bradford  
(603) 938 2223

Open  
Wednesday-Sunday  
7am—2pm

Check Facebook for our menu daily