

# Bradford Bridge

COMMUNITY NEWS FOR NEIGHBORS BY NEIGHBORS

Volume 27, Number 9

September 2016

## The Bradford Bridge Celebrates 25 Years of Community News

Food, laughter, music and birthday cake will be shared on Sunday, September 11 from 4-7 when the Bradford Bridge celebrates 25 years of publication and you, dear readers, are invited to attend. The Bridge is hosting a pot luck dinner in the Community Permaculture Garden on Main Street featuring live music in a free concert with The DoBros. All you need to do is to bring a favorite dish to share and your family. We will provide tables and chairs, plates, silverware, a beautiful

garden and a night of live music on Main Street.

The Bradford Bridge Board of Directors and Editors are pleased to have provided the Town of Bradford with 25 years of, “community news for neighbors by neighbors.” We have been able to provide a free community newspaper because of the advertisers that support our paper each month. We want to sincerely thank these local businesses who contribute to help make the Bradford Bridge possible,

such as Tall Pines Realty, WALCO Mechanical, Bradford Market, Appleseed Restaurant, Pizza Chef, Brackett Scheffy and Lake Sunapee Bank to name a few.

Looking back to July, 1991 to our first publication, an announcement was made to name this new town paper. The August, 1991 issue named the paper, “*The Bradford Bridge*” which was selected because, “Our covered bridge is a

*(continued on pg 16)*

### IMPORTANT 2016 ELECTION LAW CHANGE

*Ch. 320 House Bill 1503 (amendment effective 6/24/16)*

#### **RSA 659:43 Distributing Campaign Materials at Polling Place**

I. No person who is a candidate for office or who is representing or working for a candidate shall distribute, *wear*, or post at a polling place any campaign material in the form of a poster, card, handbill, placard, picture, *pin, sticker, or circular, or article of clothing* which is intended to influence the action of the voter within the building where the election is being held.

### NH State Primary Election **Venue Changed to:** *Bradford Town Hall*

September 13, 2016  
8:00am to 7:00pm

# The Bradford Bridge



P.O. Box 463  
Bradford, NH 03221  
Ph.: 603-938-2692  
bradfordbridge345@gmail.com

**ADVISORY BOARD:**

AUDREY V. SYLVESTER, CHAIR  
CAMILA DEVLIN, TREASURER  
MAUREEN O'KEEFE, BUSINESS MANAGER  
BETH RODD, MARCIA KELLER,  
KATHLEEN BIGFORD, EDITORS  
Harriet Douglass, Subscription/Distribution  
Mary Keegan-Dayton, Phyllis Wilcox,  
Marion Hall, Retired  
Nola Jordan, Distribution

**Contributors**

Carey Rodd & Sandy Richard, Layout Design  
Printed by RC Brayshaw & Co., Inc.

Subscription Information: To receive The Bridge by mail, please send a \$25 check to cover mailing costs to the above address.

**Advertising**

The Bradford Bridge is a free community newspaper supported by advertisers. To place an ad, call Maureen O'Keefe at 938-2941. The firm deadline for all ads and articles is the 20th of the month.

**Submissions**

The Bradford Bridge is written by neighbors, for neighbors. Anyone is welcome to submit articles and/or photographs of interest to the community. We reserve the right to edit submissions.

### Selectmen's Office Hours 938-5900

Mon - Thu: 8:00 am - 4:00 pm  
(closed 12 noon - 1 pm)  
Fri: 8:00 am - noon

Selectmen meet for the summer on the following Mondays:

July 11 & 25  
August 8 & 22  
from 5:30 pm - 7:30 pm

### Town Clerk/ Tax Collector Office Hours 938-2288

Mon & Tues - Closed  
Wed - 12 PM - 6 PM  
Thu & Fri - 8 am - 4 PM  
(closed 12 -1 pm)  
2nd & 4th Sat - 9 am - Noon

### Planning Board Circuit Rider Wednesday

call 938-5193 for appointment  
Town offices are temporarily located at BACC

## From the Editor

It's amazing how short the period from Memorial Day to Labor Day is every year. Whoosh!

One day soon, the political season will be (thankfully) over and we won't have to listen to or see nasty political ads for a few years. The amount of vitriol and name-calling has been particularly venomous this season, the worst ever. But, please step over the nasty campaign rhetoric and vote. **The Primary is on Tuesday, September 13 and the General election on Tuesday, November 8.** We live in a Democracy and your vote counts. This year the town voting will be at the **Bradford Town Hall, not the KRES.** It will be terrific to be back at Town Hall where committees are now meeting. We can settle into the beautiful, fine old bones of our historic wonder once again.

Now that so many young families have moved into town, perhaps their energy and youth will be sufficient to give Town Hall a facelift. We can only hope!

Enjoy the remainder of this beautiful summer and the luscious fall landscape still to come.

*Beth Rodd,*  
September Editor



### Brackett L. Scheffy Counselor At Law

General Practice of Law Including:

Estate Planning--Wills, Trusts, Powers of Attorney  
and Probate Avoidance  
Estate Administration  
Real Estate and Contract Matters

PO Box 285, Bradford, NH 03221

BrackettScheffy@tds.net

938-5600



## The First Baptist Church

Your Community Church

**Worship Services and Kingdom Kidz** every Sunday at 10 am

**Kingdom Builders Kickoff Sunday** will be held on September 18<sup>th</sup>. This is the beginning of the fall curriculum and a celebration cookout will follow the service.

**Youth Group** will resume on September 18<sup>th</sup>. Youth grades 6-12 are welcome to meet in the church basement at 11:30 to 1 pm.

**The Mom's Support group** will begin on Tuesday September 20 at 9:30 am in the church office building. Resource "10 Minute Time out for Moms" by Grace Fox.

**Wednesday Night Prayer** in the Sanctuary at 6 pm every week.

**Bradford Community Food Pantry** will be open on Wednesday, September 21, 5:30-6:30 pm. Non-perishable goods are always welcome, drop them off Sundays in the basket by the front entryway door to the church or stop by the church office Tuesdays and Thursdays 9 am -1 pm. For the months of September and October donations of \$50.00 will be collected to sponsor a Christmas gift for a child on our Christmas list. Help us provide the Christmas wishes of our food pantry children. Make checks payable to First Baptist Church Bradford and memo: Christmas Gift.

**Sister to Sister (a women's prayer/support group)** will meet on September 10 at 8:30 am in the office building.

**Men's Fellowship** at the home of Fred Hubley will be held on September 28<sup>th</sup> at 6:30 pm

**Small Groups** in homes and at church "The Miracle of Mercy" starts the week of September 19<sup>th</sup>.

**Thursday Night Bible Study** at 6:30 pm in the church office building, will meet on September 1, 8 and 15th they are continuing a study of Acts.

**Rise Again Homeless Mission** We collect used clothing, bedding and towels in good condition. Drop off on Tuesday's or Thursday's 9-noon.

www.tallpinesnh.com  
938-2366

**Tall Pines REALTY**

REALTOR **MLS**

Ann C. Hallahan,  
Broker/Owner  
Laura Hallahan  
Holly Salera  
Laura Squires

**NEW LISTING**

**CUSTOM CONTEMPORARY**  
Total privacy, finished basement,  
Warner River frontage  
Bradford \$310,000

**NEW PRICE**

**RESTORED COLONIAL**  
Impeccable condition,  
private end of village location  
Bradford \$257,250

1 Center Road, , P.O. Box 525  
Bradford, NH 03221 603-938-2366

Located by the Bement Covered Bridge since 1988!

## NOTICE

The subscription price of The Bradford Bridge will be raised for 12 issues from \$20 to \$25 per year due to the cost of stamps and envelopes. The increase will be effective when you renew your annual subscription.

## Area Events

### Newbury

South Newbury Church Saturday, October 1, 5-7PM, Fabulous Roast Pork Dinner with mashed potatoes, veggie, dessert & drink. Friendship House, South Newbury. Cost \$12. Tickets for a raffle and Chinese auction will be available. Moreinfo? "www.southNewburyUnionChurch"

### New London

New London, NH: Lake Sunapee Region VNA & Hospice (LSRVNA) will hold its 2016 summer fund raiser – *A Time To Care* - in the beautiful and newly renovated Draper Room at the Center @ Eastman in Grantham on Wednesday, September 14<sup>th</sup> at 5:30 p.m. Tickets are \$75 and proceeds benefit the vital home care and hospice services provided by LSRVNA, a locally-based non-profit organization serving the community since 1970. Sponsorships at a variety of levels are also available and are very important to the event's success. For more info call the VNA at 603-526-4077. Or contact [craymond@lakesunapeevna.org](mailto:craymond@lakesunapeevna.org).

### Sutton

Muster Field Farm Museum in North Sutton will host its annual Farm Days celebration this year on August 27 and 28. Held at the farm on Harvey Road, the festivities include hayrides, a kiddie tractor pull, and many demonstrations of traditional farming skills and crafts. Antique tractors and engines will be on display all weekend.

Children can try their hand at ice cream churning, blacksmithing, stone splitting and stilt walking if they dare. Both days feature a grand parade at 3:00 p.m. Visitors to Farm Days are encouraged to explore all the farm buildings and enjoy the 250 acres of gardens, farm and forest land.

Saturday highlights: Alpacas and sled dogs on display, a round of Cow Flop Bingo in the afternoon, and a Roast Beef Supper from 5:00 - 7:00 p.m. (\$12 for adults, \$5 for children, call 603-848-4297 or 603-927-4440 for reservations).

Sunday highlights: Breakfast from 6:30-8:30 a.m. (\$5/plate: pancakes, sausage, juice & coffee), sled dogs on display, and a morning 4H Oxen Show.

Farm Days hours are 10 a.m. to 4 p.m., rain or shine. General admission is \$5; free for members and for children 6 and under. Information and directions: 603-927- 4276 or [www.musterfieldfarm.com](http://www.musterfieldfarm.com).



Do you still have school clothes that need to be hemmed?

Call Sandy at 938-2756

**COONEY ELECTRIC**  
 FAMILY OWNED SINCE 1926  
 LICENSED MASTER ELECTRICIAN - NH / VT  
 WHEN QUALITY COUNTS  
 CALL COONEY! **938-2415**



Gift Certificates available

Open Tues.- Sat. 10am - 5 pm

We're so much more than a frame shop... come in and see what's new.

Framing ~ Art ~ Prints ~ Pottery ~ Antiques  
 Furniture making and repair

916 Main Street, Fountain Sq., Contoocook • 746-4996  
[coveredbridgegallery@conknet.com](http://coveredbridgegallery@conknet.com)

**Alert to Advertisers**

To ensure that your ad is printed as you (and The Bradford Bridge) wants it to appear, it must be submitted in "press quality" PDF format, at least 300 pixels per inch (ppi). The Bridge cannot be responsible for the reproduction of your ad if this format is not provided. Also, keep in mind that trying to fit too much text in a small ad can lead to less than satisfactory results. Firm deadline is the 20th of the month.

Your understanding and help in this matter is appreciated.



## Bradford Town Boards

### Board of Selectmen

Dave Gaudes updated the Selectmen on activities by the Lake Massasecum Improvement Association. They continue to conduct water quality tests in different areas of the Lake and are working hard to eliminate milfoil. He reported that they have GPS locations of all the patches of milfoil which helps to monitor the invasive aquatic plant.

Selectmen discussed a temporary heating system for Town Hall. No final decision.

Selectmen signed a letter of support for funding through the Transportation Alternative Program (TAP) for the construction of a new sidewalk and bike lanes on West Main Street. The application represents the second phase of the renovation project, continuing the work already completed on East Main Street.

An Intent to Cut was signed for Map 7/Lots 38 and 59 on Howlett Road.

Selectmen continue to meet at the Bradford Town Hall. Check the website [bradfordnh.org](http://bradfordnh.org) for the dates of the next meetings.

### Zoning Board of Adjustment

A Public Hearing was held on an appeal for a variance presented by Robert C. Stewart on behalf of Fred and Lois Schweizer who propose to raze a non-conforming house on Davis Road, Map 22/ Lot 16. The new house would meet the side setback requirement for the zone and all requirements

of the NH DEA Shoreland Water Quality Protection Act, but not the minimum distance from the shoreline, as determined by the natural high water mark, to any building shall be 75' Stewart presented a plan asking to be granted a 50' setback. He stated, "To adhere to a 75' setback would require drastic changes to the lot. To be in strict conformance with the ordinance would be unreasonable and irresponsible." Also of concern is the number of trees that would need to be cut for a new driveway.

The four abutters in attendance were all in favor of the plans. The Board reviewed the five criteria necessary and voted 4 – 1 to grant the variance.

### Planning Board

Elyce Reny presented a plan to subdivide property on Deer Valley Rd (Map5/Lot55). She has 5.07 acres and would like to give +/- 3 acres to her daughter. It was explained the Board requires a completed application along with plans before the Board can approve or deny the application. She will need State septic approval because of the lot size.

William C. Heselton proposes a junkyard on 2.9 acres of the +/- 120 acres at Map9/Lot45 on County Road. He was informed that a special exception from the ZBA would be the first step. Molly Hopkins (ZBA secretary) will add this to the September ZBA agenda.

(continued of pg 7)

**Check out our NEW ATM in Bradford!**

You can now make envelope-free check and cash deposits at Sugar River Bank's **INTELLIGENT DEPOSIT ATM**, conveniently located in front of The Pizza Chef at 101 East Main Street, Bradford.

How can we help you? 

800.562.3145 | [sugarriverbank.com](http://sugarriverbank.com) | Member FDIC | EQUAL HOUSING LENDER

**WALKER**  
AUTOMOTIVE

Quality < Dependable > Friendly  
Automotive Service & Repair

 ASE

603-526-4848  
Rt. 11, Wilton, NH

Major & Minor Repairs  
Foreign & Domestic Vehicles  
[www.WalkerAutomotiveInc.com](http://www.WalkerAutomotiveInc.com)

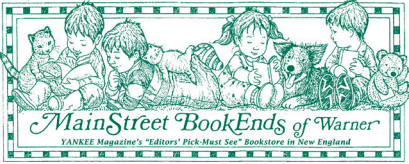
**Hugo's Electric, Inc.**  
Licensed & Insured  
RESIDENTIAL • COMMERCIAL  
938-5573  
3191 State Rte 114, Bradford

EPA Certified for Lead

**ALBERT L LEBLANC**  
938-2018

INTERIOR & EXTERIOR PAINTING  
REMODELING • CARPENTRY • DRYWALL  
REFINISHING • KITCHEN & BATH

"fully insured, free quotes"



**MainStreet BookEnds**  
[www.mainstreetbookends.com](http://www.mainstreetbookends.com)  
Store Info, Browse, Order Books & eBooks

**Books and Toys**

Visit MainStreet MarketPlace & Gallery  
Local Art, Products, a "Third Place" to Gather & Relax

**OPEN EVERY DAY 9 ~ 6**  
**100% Solar Powered!**

16 E. Main St., Warner 603-456-2700  
~ Cultivate Community ~ Shop Locally ~

## Greenway Fall Hikes

We live in a bit of day-hiker heaven. Fall weekend hikes sponsored by the Sunapee-Ragged-Kearsarge Greenway Coalition are an opportunity to see local peaks and valley woodlands both up close and with expansive views. Ragged and Kearsarge mountains are classic New Hampshire view hikes.

Lower elevation walks in Andover, Sutton, and Newbury pass historic cellar holes on old Class VI roads and show the importance of land conservation for wildlife habitat preservation. A special hike on the Sutton side of Mount Kearsarge will explore 236 acres that the Forest Society hopes to add this year to its Black Mountain Forest Preserve placed in conservation a few years ago.

Sunapee-Ragged-Kearsarge Greenway Coalition summer hikes are free to the public. Please call the volunteer hike leader to learn starting location and time. Be prepared: bring water, bug and sun protection, snack. See: [www.srkg.org](http://www.srkg.org) [1] for information and membership.

Sept 11 (Sun): In Andover, a family hike on Trail 10 from Proctor Academy to Winslow State Park. 6 miles on easy trails and old roads. (Contact: Dave Gardner and Nick Baer (927-4033) or email: [budahbing@yahoo.com](mailto:budahbing@yahoo.com))

Sept 24 (Sat): From Winslow SP over Mt. Kearsarge to Kearsarge Valley Rd on Greenway trail 11. (5.8 miles) Contact: Anne Hewitt (848-5762) or email: [anne5762@live.com](mailto:anne5762@live.com)

Oct 1 (Sat): In North Sutton near KRHS, a back woods exploration of hoped for 236-acre conservation addition to Black Mountain Forest Preserve on Mount Kearsarge. (a relaxed few miles of outdoor education) Contact: Dave Anderson (224-9945 x 335) or email: [danderson@forestsociety.org](mailto:danderson@forestsociety.org)

Oct 16 (Sun): Over Ragged Mountain from Wilmot to Proctor Academy in Andover on Greenway trail 9. (6.1 strenuous, rewarding miles) Contact: Rosanna Dude (828-1001) or email: [rosannaleigh@gmail.com](mailto:rosannaleigh@gmail.com)

Oct 22 (Sat): In Newbury on Greenway trail 14 between Newbury harbor and Chalk Pond. (Moderate 4.4 mile woods hike) Contact: Lee Carvalho (735-5719) or email: [leecarvalho6@gmail.com](mailto:leecarvalho6@gmail.com)

Oct 29 (Sat): From Kezar Lake at Wadleigh State Park in North Sutton via King Hill and NH Audubon Sanctuary to Chalk Pond in Newbury. Contact: Nathan Richer (763-2127)

## Town Hall Update

*By Camila Devlin and  
Karen Hambleton*

There is a lot of progress being made at Town Hall these days! First, the old Police Chief's office walls came down to create a larger, more functional, meeting space and the old Town Clerk's cubby was removed, opening up the front entry foyer. Walls were put up in the rear hallway in order to create a private bathroom and meeting room for staff. A ramp was installed with access to the side entrance and the ADA compliant bathroom was completed. The alarm was reactivated, outdoor lighting installed and all of the electrical work completed. The walls were patched and painted and the furnace removed from the basement to allow use of the building. The Selectmen now hold their regularly scheduled meetings in the Town Hall meeting room.

Of course, there is still more to be done before the move back to Town Hall takes place. The ADA door opener needs to be installed. The current duct work will need to be removed or cleaned, pending decision. Air and water quality tests need to be conducted to ensure safe working environment. Finally, the move date will be thoughtfully chosen in an effort to allow substantial time for the phone lines and computer networks to be properly installed in the "new" building.

## Town Boards (continued from pg 5)

### THROC

The Town Hall Restoration Oversight Committee recently approved two motions, after lengthy discussion:

Whereas Bradford Town Hall has been honored with a listing on the National Register of Historic Places and has been identified as one of NH's most important and endangered cultural and historic landmarks worthy of saving, Town Hall Restoration Oversight Committee pledges to strive to retain the LCHIP Grant and matching donations and gifts-in-kind.

We hereby commit to honor grant-associated guidance and stewardship commitments signed by the Selectmen for the Town of Bradford. THROC deems this action to be in the best interests of the town, its taxpayers, the generous majority of voters and the 150-strong community of donors and volunteers who have embraced the restoration. and

The THROC will make all plans, decisions, and recommendations to the selectmen based on the inclusion of a full basement.

Contractor Scott Mckenney expressed interest in working on the project as "Project Consultant" to provide advice to the committee and solicit bids for elements of the project as required.

The decision was made that the best 'first course' of action is a

meeting between McKenney and Architect Kelly Gale to become familiar with the project from the architect's perspective, review available information (past bids, specifications, drawings, etc.) and generally come up to speed on the project.

### Cemetery

The trees at Unity and Marshall Cemeteries have been taken down and cleaned up. Availability of a crane is holding up the removal of the trees at the New Pond and Baptist Church Cemeteries.

Cornerstone Cemetery Services will visit some of the cemeteries which have damaged stones to give an estimate of prioritized repairs.

### Trustees of the Trust Funds

The Trustees met to further discuss ways to support the long term purposes of the 1964 Bradford School Scholarship Trust Fund and the 2013 Bradford

Independence Day Celebration Trust Fund. Both serve enduring long term Town purposes, but are currently invested in low-yield instruments. The Trustees voted unanimously to proceed towards investing these two funds in separate Fidelity accounts typically yielding at or near 3% per annum.

### Budget Committee

Rules of Procedure and Code of Conduct  
Dave Nunnally presented the Board with a draft of Budget Committee By-Laws. The Board went through each section as a group and made changes. Board members were asked to suggest any further changes as the proposed rules are further revised.

The Board reviewed requests for warrant articles for the 2017 Town Meeting

*Minutes of all meetings are on file at the Town Office and online at [bradfordnh.org](http://bradfordnh.org).*



**Ayer & Goss**

**FUELS**

**24 HOUR SELF SERVICE  
GASOLINE & DIESEL PUMPS**

*Serving the area's heating needs for more than 60 years*  
FUEL OILS & LP GAS / COMPLETE HEATING SERVICE

**938-5335**

Route 114, Bradford • Hall Ave., Henniker . . . 428-3333



# Town Clerk's Office

The State Primary Election will be held September 13, 2016 from 8:00am to 7:00pm at the Bradford Town Hall at 75 West Main St.

In addition to the Voter ID Law introduced in 2015 there are a few important Election Law changes made by the 2016 Legislature to keep in mind before arriving at the polls.

**RSA 659:43, I** prohibits the distribution, posting or wearing of any poster, card, handbill, placard, picture, pin, sticker, circular or article of clothing at a polling place which is intended to influence the action of a voter

**RSA 657:17** absentee ballots delivered to the clerk by the voters spouse, parent, sibling or child may be accepted up to 5:00pm on Election Day.

**RSA 657:1; 657:4,I; 657:7,II(a); 669:26** defines the term "employment" to include the care of children/infirm adults as reasons for requesting an absentee ballot.

**RSA 654:7, I(a)** a 17 year old may register to vote if they will be 18 on the day of the next election following registration.

If you have any questions about 2016 Election Law changes or about how to obtain an absentee ballot please contact the Town Clerk's Office at 938-2288 or by e-mail at [TC@bradfordnh.org](mailto:TC@bradfordnh.org).

At 2:00pm on Wednesday, September 7, 2016 at the Town Clerk's Office at 134 E. Main St, the Moderator, Town Clerk, and at least one other Election Official will perform the public testing of the tabulator that has been configured to tabulate votes on the ballots for the State Primary Election. The public is invited and encouraged to attend and watch the testing.

We look forward to seeing everyone out at the polls!

Camila Devlin, Town Clerk  
Melissa Cloutier, Deputy Town Clerk

"WOMEN'S WORK:  
Tools used by women  
in home, hearth and  
garden."



Richard Sherman has compiled a comprehensive exhibit for the Bradford Historical Society that will be on display in the Tin Shop throughout the fall. Come and examine heckles and trammels and all sorts of fascinating artifacts while contemplating the labor of a rural woman's daily life during the 19th century. Open every Saturday from 10 am to noon and by appointment.

at Newbury Harbor

# Bubba's

BAR & GRILLE

Bubba's Catering is available for all occasions! 603-763-3290  
976, Rt 103, Newbury, NH  
[bubbahmplt@tds.net](mailto:bubbahmplt@tds.net) [bubbasbarandgrille.com](http://bubbasbarandgrille.com)

Serving Bradford  
with a community bank tradition

Full-Service Banking • 24-Hour ATM  
Drive-Up • Free Online Banking and Billpay

 LAKE  
SUNAPEE  
BANK fsb  
*the advantage of leadership*

28 offices including Main Street, Bradford  
938-2277 • [www.lakesunbank.com](http://www.lakesunbank.com)

Equal Housing Lender • Deposits Insured by the FDIC



## Local Historian Speaks at Tin Shop

by Mary Keegan Dayton

Backed by historical maps and a keen interest for the past, local historian Perry Teele narrated a history of the development of New Hampshire and Bradford at the Old Tin Shop on a warm summer evening. Sponsored by the Bradford Historical Society, Teele spoke to an enthusiastic crowd sharing his love of New Hampshire and deed research starting with the Mason land claim in 1629.



Teele's understanding of the slow development of our state had his audience leaning in. "He used straight forward language and broad strokes to paint the picture of a very complicated time in NH history," said Laurie Buchar, Bradford Historical Society archivist and secretary. Descriptions and stories of the relationships between Massachusetts and the heirs of John Mason was the backdrop in his introduction to Bradford history.

In about 1770, there were about 25 families living on farms in Bradford doing subsistence farming (farming just to live). Raising crops, animals, cutting wood and fishing. Teele had maps showing the 100 acre lots sold after incorporation in 1787. The

1800 census showed 365 people in Bradford to include 106 men. Many colonial towns were 6 square miles. Bradford Center is our town's geographical center. The idea being that no one has to walk more than 3 miles. "

Teele pointed out a significant note in Bradford history as the import of the Merino sheep between 1809 and 1810 with two times the wool and five times better wool than the existing sheep. Wool was selling for 40 cents a pound and cost 35 cents to raise. By 1815 there were 22,000 merino sheep in NH. By 1830, there were 1.2 million and by 1850, there were 6 million. It wasn't just farming to live any more. Fifty sheep had 125 lambs and a profit could be made. Stores began opening. Teele continued that between 1810 and 1850 lots of stone walls were built in town to house the sheep. He discussed the impact of the civil War on Bradford and in 1850, the railroad. "Bradford was a nice market town, since it was at the end of the rail line."

The audience was invited to look at the historical maps and Teele's book of deeds. Perry has done deed research on all the old properties in town by house number and stree and he added with a smile, "and that was just prior to 1960 when they were put on the computer." Having walked the 250 miles of stone walls in town and paced out every stone wall with a compass, Teele knows Bradford well. "A stonewall is the best locator on a map,"

Peery Teele's history talk is another fine example of the Bradford Historical Society's quest to show case local knowledge of our town and our state. Be sure not to miss these delightful evenings.

## The Library Lantern

The Library Lantern is on break for the next few months. Please check out our newly designed website at the same old address [brownmemoriallibrary.org](http://brownmemoriallibrary.org) for all the latest library information and new books list.

## Reading grows on you!



*Local children planted and harvested a cheerful garden on the Brown Memorial Library lawn this summer.*

**Henniker  
Veterinary  
Hospital**



Professional  
Association

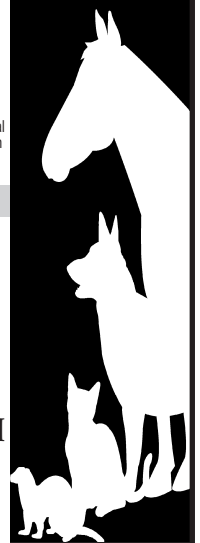
Small Animal & Equine Practice

Alyssa J. Brust, DVM  
Robert A. Brust, DVM  
Jill Patronagio, DVM  
Amy Jones, DVM  
Samantha Mazzucola, DVM

House Calls Available

**428-3441**

Maple Street, Henniker



## SEPTEMBER CALENDAR

### Thurs. September 1<sup>st</sup>

8:30-12:30 Planning Board Office  
12pm Senior Dining  
1pm Mahjong Group  
5:30pm THROC, Town Hall

### Fri. September 2<sup>nd</sup>

Labor Day Recess- No School  
11:30am First Friday Brunch  
w/ raffle & door prizes!

### Mon. September 5<sup>th</sup>

Labor Day- No School  
Town Office Closed  
Senior Center Closed  
No Meals on Wheels

### Tues. September 6<sup>th</sup>

8:45am MVSC Fitness  
10am Stitches from the Heart  
12pm Senior Dining  
1pm Watercolor class

### Wed. September 7<sup>th</sup>

10am Accuvote Tabulator Testing  
6pm Yoga  
7pm Zoning Board

### Thurs. September 8<sup>th</sup>

8:30-12:30 Planning Board Office  
12pm Senior Dining  
1pm Mahjong Group  
4:30pm BACC/P&R  
6:30pm School Board

### Fri. September 9<sup>th</sup>

8:45am MVSC Fitness  
1pm Mahjong Group

### Sat. September 10<sup>th</sup>

Town Clerk CLOSED

### Mon. September 12<sup>th</sup>

8:45am MVSC Fitness  
1pm Bridge Group

### Tues. September 13<sup>th</sup>

8am-7pm State Primary Election,  
Town Hall  
10am-12pm Flu Clinic, BACC  
10am Stitches from the Heart  
12 Noon Senior Dining  
1pm Mahjong Group  
7pm Rural Heritage Connection  
7pm Planning Board

### Wed. September 14<sup>th</sup>

1pm For the Fun of It, Knitters  
6pm Yoga

### Thurs. September 15<sup>th</sup>

8:30-12:30 Planning Board Office  
11-12pm BP Clinic & Ask a Nurse  
12pm Senior Dining  
1pm Mahjong Group  
5pm Friends of BACC, Sr. Room  
6:30pm Budget Committee  
6:30pm School Board

### Fri. September 16<sup>th</sup>

8:45am MVSC Fitness  
9:30- 11:30am Foot Care Clinic,  
North Ridge  
10am Movie: *What We Did On  
Our Holiday* (PG)  
12pm Senior Dining

### Sat. September 17<sup>th</sup>

11- 2pm Autumn Apple  
Harvest, Tin Shop

### Mon. September 19<sup>th</sup>

8:45 MVSC Fitness  
11am leave for Sunapee Harbor  
depart the MV Mt.Kearsarge at  
11:30am for Lunch Cruise- pay as  
you board  
1pm Bridge Group

### Tues. September 20<sup>th</sup>

10am Stitches from the Heart  
12pm Senior Dining  
1pm Watercolor class

### Wed. September 21<sup>st</sup>

6pm Yoga

### Thurs. September 22<sup>nd</sup>

8:30-12:30 Planning Board Office  
11:30am- 1pm Senior Center  
Week  
*LUNCHEON CELEBRATION!*  
1:30pm Mahjong Group  
6:30pm School Board

### Fri. September 23<sup>rd</sup>

8:45am MVSC Fitness  
1pm Mahjong Group

### Sat. September 24<sup>th</sup>

9-12pm Town Clerk Open

### Mon. September 26<sup>th</sup>

8:45am MVSC Fitness  
1pm Bridge Group

### Tues. September 27<sup>th</sup>

9:30-11:30 LSVNA Foot Care,  
Warner Pharmacy  
10am Stitches from the Heart  
12pm Senior Dining  
1pm Mahjong Group  
7pm Planning Board

### Wed. September 28<sup>th</sup>

10:30- 12pm Blood Pressure  
Clinic at Warner Senior Rm.  
6pm Yoga

### Thurs. September 29<sup>th</sup>

8:30-12:30 Planning Board Office  
12pm Senior Dining  
1pm Mahjong Group

### Fri. September 30<sup>th</sup>

8:45am MVSC Fitness  
1pm Mahjong Group

*\*Check [www.bradfordnh.org](http://www.bradfordnh.org) for  
an updated Selectmen's schedule*

All events take place at the Bradford Area Community Center (938-6228) or the Mountain View Senior Center (938-2104) unless otherwise noted. Please call to confirm dates and times in case there has been a change to the submitted information.

*For the MVSC call Phil at  
938-2104 with your ideas  
or questions*

*To schedule rooms at the BACC  
call Jim Valiquet at 938-2522*



#### Abbreviation Key

BACC-Bradford Area Community Center  
BBC-Bradford Baptist Church  
BML-Brown Memorial Library  
FGC-Fish & Game Clubhouse  
Gillingham Drive  
KAP-Kearsarge Area Preschool  
KRES-Bradford Elemen. School  
MVSC-Mountain View Senior Ctr  
TH-Bradford Town Hall  
ZBA-Zoning Board of Adjust.  
KLC- Kearsarge Learning Center

## Ongoing Events

Children's Storytime - Mondays Mondays and Wednesdays 10am at BML  
 Cemetery Commission - 2nd Thursday at 6PM Call 938-2119 for info  
 Conservation Commission - 3rd Tuesday at 7PM, BML  
 Fish and Game Club -1st Tuesday 7PM at Fish and Game Club  
 First Friday Bunch -11:30AM at MVSC, reservations appreciated  
 call 938-2104 for info  
 Historical Society - Tin Shop, East Main Street, open Saturdays from 10am-  
 noon May-October or by appointment. Please call 938-2078.  
 Library Trustees -1st Wednesday at 6:00PM BML  
 Planning Board - 2nd and 4th Tuesday at 7PM, BACC  
 Rural Heritage Connection - 2nd Monday, 7PM, BACC  
 Selectmen's Meeting - Every Monday 5:30PM, BACC  
 Zoning Board - 1st Wednesday, 7:00PM, BACC



**Sweet Beet Farm Stand is NOW OPEN!** Come see us for locally grown seasonal veggies, milk, cheese, eggs, meat, baked goods, and so much more! We're so excited to be back!!

Location: 2211 Route 114, next to the Bradford Post Office

### Summer Hours:

Monday-Tuesday: CLOSED  
 Wednesday-Friday: 10-7  
 Saturday: 9-7  
 Sunday: 11-3

Come and see Sweet Beet's NEW All-Local CRAFT STORE. You'll find beautiful and practical craft supplies, vintage tools, and artisan goods.

Located at 20 West Main street in Bradford

### Summer Hours:

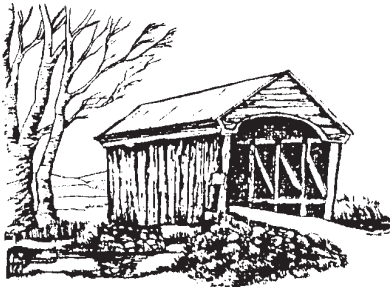
Saturday: 3:00 PM- 6:00 PM  
 Other times by chance or appt.

Kearsarge Food Hub  
[www.kearsargefoodhub.com](http://www.kearsargefoodhub.com)  
[www.facebook.com/kearsargefoodhub](http://www.facebook.com/kearsargefoodhub)  
 (603) 938-5323



## How Far Do We Go?

*All the way to Sebastopol, CA!*



*The Bridge went to Sebastopol, CA. Tom and I visited daughter and grandsons. Here I am sitting at the pool. It was wonderful. Sue McKevitt*

We are wondering how far afield the Bridge is read, in print and online. Send us a picture of some far away place the Bridge has reached so we can prove that we are just as good as the New York Times. *Send photos to [bradfordbridge345@gmail.com](mailto:bradfordbridge345@gmail.com).*

We may no longer be called Cobble Pond but OUR FABULOUS INDIAN FOOD is still here! TAKE OUT ON WEDNESDAY AND FRIDAY

## Bradford Market

Groceries - Indian Spices & Indian and Take-out Dishes - ATM  
 - Beer & Wine Lottery Tickets - Gifts - Sodas - Snacks - Copy Machine - Coffee - Sandwiches - Auto Supplies - Toys - Magazines & Newspapers - Video Rentals

OPEN SEVEN DAYS - 6 am- 10 pm

Route 103 938-2662 Bradford, N.H.





## The Bradford Bridge: Looking Back SEPTEMBER 1991

The September 1991 Bradford Bridge brought both new contributors and new advertisers to continue coverage of our town. Advertisers that began and have continued their support since then included Hugo's Electric Service, Henniker Pharmacy, and Ann C. Hallahan (now Tall Pines) Real Estate. Others that, sadly, are no longer in business are Dickie's Outdoor Sports & Power Equipment, Stewart Agency, J. Albert's Restaurant (once located in the soon to be refurbished as what? in the Thistle and Shamrock building on West Main Street), R.L. Dodge Co. and Silver Bear Tree Service.

Hugh Keays wrote a front page article about school apportionment. The towns of Bradford and Warner had filed a petition with the Superior Court in 1988 requesting a change in the formula set in place when the seven towns that constitute the KRSD (Kearsarge Regional School District) were consolidated in 1966. At that time, 75% of each town's financial obligation for the schools would be determined by "ADM" (average daily membership) from each town and 25% would be based on the ratio of equalized valuation in each town to total equalized valuation in all towns. Growth in the towns over the years had caused the formula to place an increasingly heavy tax burden on Warner and Bradford.

In March 1988 a warrant article was presented at the school district meeting proposing a change from "75/25 to "50/50", which was passed by a majority vote. At this point, the moderator interpreted the articles of association to require a 2/3 vote and declared the article did not pass. This was the basis for the lawsuit.

Three years later, in 1991, a hearing date of November 12, 1991 was set for a court hearing. Subsequent issues of The Bridge will follow this event. Other articles of note that month included award of Boston Post Cane to Alma May Ryder (mother of Thalia Brown), obituary for Barbara Gilmore, news from the Transfer Station announcing a grant to purchase a heavy duty Tram Rail baler to replace the old pit baler, and articles with news from the Historical Society and activities at the Union Congregational Meeting House. Mildred Schmidt's Cozy Corner recipe for September was just right 'for busy late summer days' and still is:

### Mildred's Chicken Salad

|   |                       |
|---|-----------------------|
| 1 cup white and red grapes cut in half    | ½ cup chopped walnuts |
| 2 cups cooked chicken in bite size pieces | ¼ tsp, curry powder   |
| 1 tsp. soy sauce                          | mayonnaise to taste   |

In a large bowl, combine grapes, walnuts and chicken. In a small bowl, combine about half a cup of mayonnaise with the curry powder and soy sauce. Stir into chicken mixture. Add additional mayonnaise, if needed. Looks pretty served on lettuce leaves fresh from the garden.

Compiled by Marcia Keller

## Obituaries

**Hugo Werner Flinkstrom**, 82, of Warner, passed away August 4th at the Epsom Health Care Center. He is survived by his wife, Evelyn, of 59 years and a brother, Richard Donald Flinkstrom, of West Virginia, three sons, Kevin and his wife Brenda of Antrim, Edward and companion Katy Keith, and Paul and his wife Debbie of Bradford. He is also survived by five grandchildren, Dennis and his wife Angie Flinkstrom of Newmarket, NH, Garrett Flinkstrom, Morganne Flinkstrom, Andrew Flinkstrom of Bradford, and Kelsey Flinkstrom of Concord; two great grandchildren, Wyatt and Sumara Flinkstrom of Newmarket.

Hugo joined the Army in 1950 for three years, then was an electrician until he retired. He liked hunting, fishing and camping.

A graveside service was held at North Branch Cemetery in Antrim. The Holt-Woodbury Funeral Home & Cremation Service of Hillsborough is assisting the family.

In lieu of flowers, a donation may be made to the humane society of your choice. For more log on to [www.holtwoodburyfh.com](http://www.holtwoodburyfh.com).

---

### **Heidi Roberta (Bacon)**

**Massey** died on August 20, 2016, surrounded by her loving family, after a long battle with breast cancer.

Heidi grew up on Lake Massasecum in Bradford, where she enjoyed adventures and taking care of her animals, particularly her horses. A terrific athlete, she was the first person to score 500 points in basketball at Kearsarge Regional High School. She was awarded a scholarship to NH College for field hockey, basketball, and softball, where she would letter in all three and go on to graduate. A devoted State of NH Employee for over 30 years, Heidi developed software used for the annual NH Fish and Game Moose Lottery.

Heidi enjoyed taking long rides on her motorcycle and spending time out on the lake in her kayak. Her dogs were a big part of her life.

She was predeceased by her husband of 32 years, Jim. She is survived by her sons, Tyler Massey of Boston, MA, and Specialist Sean Massey of Joint Base Lewis-McChord, WA; her siblings, Beth Spaulding and her husband Peter of Hopkinton, David Bacon and his wife Cheryl of Milton, MA, and Heather Bacon-Putirka and her husband Keith of Clovis, CA; and numerous nieces and nephews.

Donations may be made to the Pope Memorial SPCA, 94 Silk Farm Road, Concord, NH, 03301.

**Eugene Otis Cook** passed away at age 95 on Aug. 19, 2016, surrounded by his family. Gene was married to Doris (Carey) Cook, for 74 years, recognized since 2014 as New Hampshire's longest married couple.

He was born in Stoneham, MA on Dec. 14, 1920, son of Fred O. and Margaret (Rivers) Cook. Gene worked at Federal Products Corporation from 1938 to 1953, the year he built his first family home in Mapleville, RI. He worked for Machinery Engineering & Sales as a sales engineer from 1953 to 1968 when he and his wife incorporated Cook Machinery Associates.

He retired in 1984 and moved to Warner to be close to his sons and grandchildren. There he and Doris built a log cabin home that they lived in for 24 years.

While in Warner, Gene served as town selectman, director of the Warner Historical Society, and was owner of Warner Home

Supply. After selling the business Gene continued to provide advice for customers at Perkins Hardware.

In 2014 Gene was awarded the Boston Post Cane as Warner's oldest citizen. He is survived by his wife, Doris M. (Carey) Cook; three sons, twelve grandchildren, including Jon (Amy) of Bradford; Maddie, Jenna, Anna Cook of Bradford are three of nineteen great-grandchildren, and three great-great-grandchildren; his sister Irma Winters; his sister-in-law, Peggy Turbitt; and many nieces, nephews.

Interment will be at the convenience of the family. Donations may be made to the Edna McKenna Trust Fund, MCNH, 325 DW Highway, Boscawen 03303, or St. Theresa's Building Fund, 158 West Old Hopkinton Road, Henniker 03242.

**LUMBER BARN**  
.com



**YOUR LOCAL LUMBER YARD  
AND HOME CENTER**

**Bradford (603) 938-5161**  
**Goshen (603) 863-5601**

**LARGE ENOUGH TO MEET YOUR NEEDS  
SMALL ENOUGH TO CARE**



**dockside \* hair design**  
603.938.0090

**Jennifer Wright**  
Owner/Creative Stylist

2211 Route 114  
Bradford, NH 03221

Like us on Facebook!

**BRADFORD SEPTIC SERVICE LLC**

- Septic Pumping
- Baffle Replacement

- Locate & Expose Covers
- Risers on Tank Covers

fast and friendly service

PO Box 391  
Bradford, NH 03221

David Bagley  
(603) 938-5033

### Volunteers Needed

Do you have some extra time on your hands? Lake Sunapee Region VNA & Hospice has a need for additional volunteers in

the following areas:

- Assist with the Good Day Respite program in New

London or Lebanon for individuals with memory loss. Typical shifts are 9:45am-12:00pm or 12:00-3:00pm.

- Watch children ages birth to five while their parents share experiences and challenges during the Parent-Child Program. This support group is held from 9:00-11:00am every Wednesday from September through May.
- Help out at The Renaissance Shoppe, which sells donated items to raise funds for LSRVNA. Typical shifts are 10:00am-1:00pm or 1:00-4:00pm.
- Help with the registration process at the many flu clinics held throughout the area in September and October.

For more information, contact Jeana Newbern at 526-4077 or [jnewbern@lakesunapeevna.org](mailto:jnewbern@lakesunapeevna.org).

## AUTUMN APPLE HARVEST at the TIN SHOP

*Hosted by the Bradford Historical Society*

**September 17<sup>th</sup> 11:00-2:00pm**



**11:00-1:00pm**

Apple Crepes - *by Sweet Beet*  
Cider Press Demo

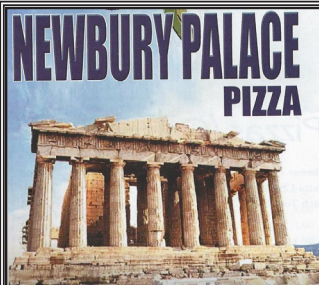
Apple Jams, Pies, Cider and other apple based goods for sale

**1:00-2:00pm**

Book talk and signing with Ben Watson, author of *"Cider, Hard & Sweet"*

**The Tin Shop  
160 E. Main St., Bradford, NH**

*\*A portion of sale proceeds will benefit the Bradford Historical Society\**



104 Route 103  
Newbury, N.H.

**BEST PRICES In the AREA**

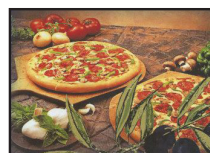


### HOURS

Sunday - Thursday 10 a.m. - 9 p.m.  
Friday - Saturday 10 a.m. - 10 p.m.

**938-5050**

**Gift Certificates Available**



**Belanger Home  
Improvements  
Call John 938-2858**





## LETTERS TO THE EDITOR

Dear Neighbors,

David Woolpert and I are running to represent the towns of Bradford and Henniker as State Representatives in District 6.

David is a financial advisor who has lived in Turkey, been a Peace Corps volunteer and has a strong moral ethic and a vision for moving NH into the future. He is actively involved in Henniker town business as the chair of the Budget Committee, a member of the Rotary Club and on the board of White Birch Community Center. He is modest, progressive and thoughtful, listening to other people's opinions and open to the ideas and concerns of our friends and neighbors.

I too have been engaged in the Bradford community for more than 30 years on many committees; Youth Sports, PTA, the Budget and Town Hall committees. I am grateful to be part of a unique and evolving family of friends and community. Having represented the people of our district for a total of eight years in the legislature on Criminal Justice and Public Safety I have the experience needed for the task and ask for your support as you vote for our ticket on November 8.

We are progressive candidates working for the children and families of New Hampshire. Our opponents are Tea Party

advocates who support and endorse the politics of Donald Trump. Please vote for us and "Make America Sane Again."

Many thanks for your past support and encouragement as well as your vote on Tuesday, September 13 (Primary) and Tuesday, November 8, (General Election)

Beth Rodd  
David Woolpert

Letter to the Editor:

I write this in support of Tom Dunne for the NH State House of Representatives. Bradford is part of District #6 for the General Court, which encompasses Bradford and Henniker. Tom would be a fine conservative voice for our community and the District.

Bradford does not have the number of potential voters as does Henniker, therefore it is important that we unite & back Tom.

Tom has helped rebuild Bradford's Town Hall; a big project. His many hours of volunteer time spent plastering walls has been instrumental in advancing the re-use of our wonderful, grand old structure. We soon will be moving the Town Offices back into the 1<sup>st</sup> floor. Tom's help was huge! He understands today's needs must be joined with yesterday's gifts; the Town Hall will soon, once again, become part of our daily routine. The Town Hall "re-hosted" the 1<sup>st</sup> Selectmen's Meeting - Monday the 10<sup>th</sup>; we hope to have the Town Offices and Town Clerk/Tax Collector moved back in by mid-

September. The timing would never had been realized without Tom's and many other volunteers' help.

Vote for Tom Dunne in the Primary & General Elections! He is a good guy!

John Pfeifle  
Bradford Resident

The recent CPR life saving rescue at the farm stand deserves an article in the Bridge.

A customer fell over at a Bradford farm stand in cardiac arrest. Thinking quickly, the staff at the stand called 911 and began CPR (cardio-pulmonary resuscitation).

Volunteers with Bradford Fire and Rescue and a Bradford Police officer arrived on the scene soon after; the patient still had no pulse, and they took over CPR and applied an AED (Automatic Electronic Defibrillator). After several more cycles of CPR and 2 separate shocks from the AED, the patient's heart started beating again with a strong, regular pulse. The Henniker ambulance arrived soon after, and the patient was transported to the hospital for further treatment.

Without CPR, started right away and continued until the heart was able to take over on its own, the outcome would have been very different.

Moral: When a heart suddenly stops, CPR right away and continuously, with AED as soon as possible, can be critical. It's not complicated — anyone can learn to do it, and you just might save a life.

*by Brooks McCandlish*

## Bradford Bridge 25 Year Celebration

*(continued from pg 1)*

landmark of our town, and like a bridge, our goal is to link people together in our community,” wrote Nancy Scribner, our first editor. Lou Signorino, Marjorie Cilley, Mildred Schmidt and Tom Scribner were also at the helm.

As readers, we fondly remember the columns of Fred Winch (Gardening), Howard Brooks (Tech Talks), Maggie Ainslie (Library Lantern) and Debbie Pickman (Bradford Sports). I first began writing for the Bridge in 1992 in a column called, Youthful Activities. Padraic was two and Maggie was six when I started. They are now 26 and 29.

The DoBros Band from Warner will be providing music at our celebration. We will collect donations at the event. The band performs both acoustic

and electric music of local folkgrass and rock. They will be performing amid the blueberry bushes, cherry trees, hazelnut bushes and Bradford Pear in the self-sustaining community garden on Main Street across from the Historical Society.

Please join us for dinner, birthday cake and music. Bring your own beverages. Walk over or ride your bike. Sit under the tent in the community garden and share in the wonderful pot luck that Bradford cooks are famous for. We promise you birthday cake from some of the best bakers in town.

Sunday, September 11 from 4-7 is the time. Just bring a potluck dinner dish to share. Hope to see you there. This event is rain or shine under the tent.

*By Mary Keegan-Dayton*

## Bradford



September 13

10:00 a.m. – 12:00 p.m.  
Bradford Senior Center  
134 E Main St, Bradford

September 7 & October 5  
9:30-11:30 a.m.

Warner Pharmacy  
11 East Main St, Warner

Provided by Lake Sunapee Region VNA & Hospice for individuals 19+ years of age.

LSRVNA will bill Medicaid, Medicare and Medicare Replacement Plans. Please bring your ID card(s). If paying with cash or check, the cost is \$30.

Sarah W. Chapin  
Registered Pharmacist



• PO Box 718 • Henniker, NH 03242  
Phone (603) 428-3456 Fax (603) 428-7793  
Email: HennikerRx@aol.com



*Available for casual dining Tuesday - Sunday*  
**The Appleseed Restaurant and Catering We're Affordable!**

Tuesday - Friday, 5:00-9:00 PM, Saturday and Sunday, 4:00-9:00 PM and Sunday Morning Brunch from 8:00 am-Noon.

Celebrating our 35th year of business in Bradford

**Our Sunday Breakfast Buffet is a great way to start the week! 8am-noon \$9.99pp**

Check out our restaurant at [www.appleseedrestaurant.com](http://www.appleseedrestaurant.com)

**938-2100**

We buy local, hire local, and support local organizations



# Out and About

## Out and About

by Kathleen Bigford

A regular feature of the Bradford Bridge, Out and About, will post a picture of a place in the Bradford area with a hint about where it can be found. The places will be public and may be found on or near a town road. Your job is to get out and explore Bradford to find the place.

Congratulations again to John Warren for identifying the July Out and About site. This picture was taken from Church Street.



This month's site is one of the most dramatic views in Bradford.



It will probably be easily recognized by many. Therefore, if you know where this picture was taken from and the name of the hill in the background, we would like to hear from ALL of you. I'd love to fill a page with ALL the responders. As an optional challenge you could also identify the flowers in the foreground and/or tell the time of day when the photo was taken or mention the name of the body of water that can also be seen from this spot.

Please send your responses to any and all of the requested information to [bradfordbridge345@gmail.com](mailto:bradfordbridge345@gmail.com). If email is not in your correspondence repertoire, you may send a postcard to PO Box 453, Bradford, NH 03221. Let's hear it from far and near. You've got this!!!

**VOTE!!**



**Rodd & Woolpert**  
*Working for the people of  
Bradford & Henniker*

State Primary  
Tuesday, September 13, 2016

General Election  
Tuesday November 8, 2016

Visit our Facebook Page  
**Rodd & Woolpert 4NH**

**Warner Pharmacy**  
*Old Fashioned Service. Modern Healthcare.*

**Cindy Snay, Owner/Pharmacist**

11 East Main Street  
Warner, New Hampshire  
**603.456.3556**  
Mon.-Fri. 9am-6pm & Sat. 9am-1pm

**Old Road Antiques**  
*Our 10<sup>th</sup> Season! Th. ~ Sun. 10-5*



Antiques, Art, Collectibles, Furniture  
9 Old Sutton Road, Bradford NH  
603-938-2833

[www.oldroadantiques.com](http://www.oldroadantiques.com)



# JOIN US!



Lake Sunapee Region  
VNA & HOSPICE

2016

# Summer Party

...because it's always a good time to care!

**Wednesday, September 14th**

**5:30 p.m.**

... at the new Draper Room  
Center @ Eastman, Grantham

**\$75 pp**

**Chef's Delight**

**East Bay Jazz Ensemble Quintet**

**Special Presentations**

107 Newport Road • New London, NH 03257

**603.526.4077 x231**

[www.lakesunapeevna.org](http://www.lakesunapeevna.org)

## Bradford Bridge Birthday Bash

Sunday, September 11  
Pot Luck Dinner from 4-7  
Free Live Music featuring  
the DoBros  
Community Garden,  
Main Street, Bradford  
Under the Tent.....Rain or  
Shine

SOUTH NEWBURY  
UNION CHURCH

WHAT: Fabulous chicken  
BBQ (Thomas family  
famous recipe)

WHEN: July 23rd 5:00 –  
7:00 rain or shine

WHERE: Friendship  
house, South Newbury,  
corner of Village and Sut-  
ton Roads at the blinking  
light.

Handicap accessible.  
Cost: \$12 per person

MENU: BBQ chicken,  
homemade salads, rolls,  
soft drink and watermelon

Tickets for a great raffle  
and Chinese auction will be  
available. Drawings will be  
at the 26th annual summer  
fair, August 13th. You do  
not have to be present  
to win. Website: [www.southnewburyunionchurch.com](http://www.southnewburyunionchurch.com). Please confirm.



14 Flavors of  
Premium Ice  
Cream

### Delicious Pizza!

Dine in, call ahead, or get it DELIVERED!  
Appetizers, Subs, Salads, Dinners and more!

**(603) 938-2600**



Slices available  
all day



**Daily Lunch  
Specials!**

Located at the corner of Rte. 103 & Main - Bradford, NH

## Outside

by Ann Eldridge

This “Outside” is republished from a 2002 column. Timely!

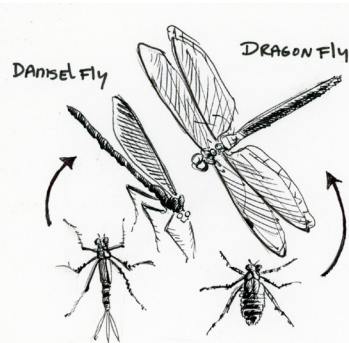
Sitting at the edge of the drought-lowered pond I became aware of a large, one-clawed crayfish marching purposefully up from the murky depths. Somewhat to my surprise, it continued up out of the water, across the mudflat, and into the shrubbery. Seconds later it returned at a faster scuttle with a larval dragonfly under its arm as if concluding a major drug deal with a dark brown suitcase full of illicit cash. Even with stalked eyes, could the crayfish have seen the newly emerged dragonfly or was it following some unseeable scent trail?

Damselflies and dragonflies are weaving and clattering across the end of summer roads at 20-30 mph. They appear to be playing ‘chicken’ with my truck as if it were a harmless dinosaur of the type their forbearers jostled with. The order of Odonata is preserved in the fossil record exactly as the insects of today.

They have the usual insect body plan of head, thorax and abdomen and have a three part life cycle of egg, larva and adult. Four bristly, swively legs attached to the thorax serve as landing gear and basket sieves for straining bugs out of the air. Food is passed forward to the two smaller legs that stuff the catch into their impressive jaws. These specialized little legs also delicately clean their two doorknob eyes. Special hairs along

these legs match up to the exact pattern of the compound eyes and they are also equipped with three extra simpler eyes.

The four wings of the smaller damselflies seem cut from the same pattern. The ‘broad-winged’ and ‘pond damsel’ families carry their wings closed over their backs when perching. The third family, the ‘spread wing damsels’, hold their wings partly open at rest. The forewings of dragonflies are narrower than the rear pair and they



always hold them outspread. The large eyes of damselflies are separated to either side of their heads. The eyes of dragonflies however are crammed on their heads, bumping up against each other. Dragonflies are further sorted into one of seven families: petal tails, darners, clubtails, spiketails, cruisers, emeralds, and skimmers.

Names like ‘shadow darter’, ‘black-shouldered spiny leg’, and ‘flame skimmer’ are deliciously descriptive but identification on the wing is not so easy. There are other clues however in the wide range of behavioral differences. Each species lays claim to a fraction of the season and often different feeding altitudes. Time of day and habitat varies as well. How often they rest and in what perching position they favor - high or low, horizontal, vertical, oblique, or at the tips of stems - can offer clues.

Most males may lay claim to favorite perches and maintain small kingdoms. Intruders

instigate ritualized battles with flashing abdomens, face to face upward spirals, and wing clattering. Some will guard a female till she lays her eggs in or on water or on emergent or submerged vegetation. The mating performance of damsel and dragonflies, called “copulation wheels”, is a complicated aerial feat. Kama sutra of the insect world.

Aquatic damsel and dragonfly larvae are as predatory as the adults. They consume prodigious numbers of mosquito, midge, and other insect larvae along with tadpoles and larger game. Damselfly larvae have three feathery gills at their posterior through which they filter oxygen out of the water. Dragonfly larvae are squatter with an alarming set of pincers that are kept tucked under their chins. They breathe by drawing water into their abdomens, extracting the oxygen, and expelling the rest. They use this squirting motion to propel themselves forward quickly in an emergency.

After numerous molts and sometimes an over-wintering they crawl up out of the ponds, streams, or seeps, split their skins for the last time, and emerge as adults. After a brief rest for wing-drying they might spend a week or so feeding before turning to the dating and mating game and to leave their offspring to the care of the wetlands.

One summer dragonflies were darting above Lovewell Mountain far from likely territories and in such a wind as to make hunting seem fruitless. It was less clear as to what my own motivation was in expending so much unproductive energy. And yet, for whatever reasons, there we were.



# SEPTEMBER



DID YOU  
KNOW??



August Crossword Answers: 1. Baseball; 2. Golf; 3. Soccer;

4. Rugby; 5. Tennis; 6. Cycling

## COLORING CONTEST!

The coloring contest in April was such a success, we thought it was time for another round!

Color this image as is, or add to it. All ages encouraged to participate!

Please e-mail your entry to [thekidsbridge@gmail.com](mailto:thekidsbridge@gmail.com) or mail to PO Box 463 in Bradford by Sept. 20th

**Labor Day** doesn't *just* symbolize the beginning of the new school year... in the 1800's men, women and young children worked long hours with very little pay. The conditions were often extremely harsh and dangerous. By the late 1800's people were pushing for reform, including age requirements for child workers.

In 1872 a carpenter named Peter McGuire rallied 100,000 workers to go on strike in New York City. Nearly ten years later on Tuesday, September 5, 1882 over 10,000 workers marched through the streets of New York for the very first Labor Day Parade. Eventually the holiday was moved to the first Monday in September and in 1894 Congress deemed Labor Day a national holiday.

So while you're eating burgers surrounded by your friends and family this year remember to think about the workers who fought so hard to give us this day...

### Bradford Bridge Advertising Rates

Basic rate is \$8.00/columninch  
One column inch (2 3/8" wide)

|                                 |          |
|---------------------------------|----------|
| x 1" high                       | \$8.00   |
| x 2"                            | \$16.00  |
| x 6"                            | \$48.00  |
| Two column inches (4 7/8" wide) |          |
| x 1" high                       | \$16.00  |
| x 2" high                       | \$32.00  |
| x 3"                            | \$48.00  |
| x 8.5"                          | \$96.00  |
| 1/2 Page                        | \$120.00 |
| Full Page                       | \$240.00 |

Other ad sizes as designed will be pro-rated Note: 10% discount allowed for local non-profits, paid-in-advance and 12 month ads.

The Bridge can help to design your ad. There is a \$25 charge for this service.

Political ads must be pre-paid

Ad copy should be sent in PDF format by the 20th (firm) of each month to: [bradfordbridge345@gmail.com](mailto:bradfordbridge345@gmail.com).



*Feast of New Hampshire chefs Tracey Quigley and Barbara Bridgewater recently treated library guests with an innovative cooking demonstration in celebration of the harvest season.*

### NOTICE TO PROPERTY OWNERS

If you haven't observed that the TAX MAP does not depict your property correctly-Please contact Perry Teele 938-2172 or [jpotele@tds.net](mailto:jpotele@tds.net)

