

THE Bradford Bridge

COMMUNITY NEWS FOR NEIGHBORS BY NEIGHBORS

Volume 25, Number 5, Issue 278

May 2014

2015-2020 CIP Committee

The Capital Improvements Program (CIP) sub-committee of the Planning Board began its work for the 2015-2020 CIP under the guidance of Stephanie Alexander, Principal Planner for Central New Hampshire Regional Planning Commission (CNHRPC). At the request of the selectmen, Cheryl Behr will serve as staff coordinator. All department heads and interested committees were invited to the initial meeting in early April. At that time, the following members volunteered to serve on the committee and were approved by the Planning Board:

- Administration - Cheryl Behr
- Board of Selectmen - John Pfeifle
- Budget Committee - Don Jackson
- Highway Department - Barry Wheeler
- Planning Board - Erich Caron
Claire James
Marcia Keller
- Police Department - James Valiquet
- School District - Jim Bibbo
- Transfer Station - Lois Kilnapp

Other departments chose not to be on the committee, but will submit requests as indicated by their needs based on the approved criteria: capital expenditure with a gross cost of at least \$10,000; a useful life of at least 3 years; not typically included in the operating budget; and any project or purchase requiring bond financing or lease purchase. Any department not submitting a request will be asked to sign off for this year.

Following the application deadline of May 9, the CIP Committee will schedule interviews with the departments during May and June to ensure all the necessary information is on hand.

July through September, the committee will finalize project ranking criteria, prioritize the applications and prepare the draft Improvements Schedule for presentation to the Planning Board. This will provide time for the Planning Board to hold a public hearing, adopt the CIP and present it to the Board of Selectmen and the Budget Committee as background for the 2015 Town Budget.

10 Questions

by Phyllis Wilcox

This month we spoke with Carol Conforti Adams. She moved to New Hampshire in 1979 and has lived in Bradford for 32 years. In 2002, Carol was on her way to work in Franklin when her car hit black ice and crashed. Her life has changed dramatically since then. She was in the Intensive Care Unit (ICU) at Dartmouth Hitchcock Hospital for 20 days of which she remembers little. She was married with two young children in middle school and her life had changed from an active normal one to life in a wheelchair. She has managed to overcome many obstacles and live with her disability. Her life's direction changed and she decided to focus on bringing up her children and becoming as functional and capable as possible. She said there have been down points but she has never stopped therapy and exercise so that she could keep some of the functions that she had prior to the accident that changed her life.

Q. Carol, you were born in New York City but grew up in Rhode Island. Tell me about those early years? Where did you go to school and what career plans did you have?

I was one of five kids. My father was first generation Italian but he managed to go through college. We moved to Rhode Island where I attended St. Mary's Academy until high school. My goal was to play soccer and basketball but in those years that was not an available option. My next step after

continued on page 14

The Bradford Bridge



P.O. Box 463
Bradford, NH 03221
Ph.: 603-938-2692
contact.us@bradfordbridge.com

VOLUNTEER STAFF

AUDREY SYLVESTER, CHAIR

Beth Rodd, Marcia Keller, Editors,
Maureen O'Keefe, Treasurer, Ad Rep
Marion Hall, Subscriptions & Distribution

Dick & Marcia Keller, Distribution
Andrea & Phil LaMoreaux, Distribution
Carey Rodd, Sandy Richard, Layout

ADVISORY BOARD

Harriett Douglass, Marion Hall, Mary
Keegan-Dayton, Marcia Keller, Beth Rodd,
Audrey V. Sylvester, Phyllis Wilcox
Printed by RC Brayshaw & Co., Inc.

Subscription Information

To receive The Bridge by mail, please send a \$20 check to cover mailing costs to the above address.

Advertising

The Bradford Bridge is a free community newspaper supported by advertisers. To place an ad, call Maureen O'Keefe at 938-2941. The firm deadline for all ads and articles is the 20th of the month.

Submissions

The Bradford Bridge is written by neighbors, for neighbors. Anyone is welcome to submit articles and/or photographs of interest to the community. We reserve the right to edit submissions.

Selectmen's Office Hours 938-5900

Mon - Thurs: 7:30 am - 5:00 pm
Friday: 7:30 am - noon
Selectmen meet every Monday
from 5:30 pm - 7:30 PM
Special Meetings will be posted
24 hours in advance

Town Clerk/ Tax Collector
Office Hours
938-2288

Monday: noon-7:00 pm
Tuesday: 7:00 am-11:30 am
12:30 pm-5:00 pm
Friday: 8:00 am-11:30 am and
12:30 pm-5:00 PM
Saturday: (2nd & 4th) 9-Noon

Planning Board Circuit Rider
Wednesday
call 938-2253 for appointment

Town offices are temporarily
located at BACC

From the Editor

Welcome Spring! Love your mother, hug your kids, break out the rakes and gardening tools, restring your tennis racquets and dust off your hiking boots. After the miserable winter we've endured, the first signs of the new season are a heady joy.

This issue of the Bridge is full of information about area events, what we can look forward to as the longer, warmer days keep us out of our snug winter cabins and as the memories of ice and snow-packed roads recede into the mist. Instead, we look forward to the Historical Society's many fun events; concerts, parades, hiking in Bradford's hills and learning more about the history and culture of original settlers in the area and other news and updates on life in Bradford. Please enjoy and share any news of interest with friends and neighbors. Thanks to our advertisers and readers for making the Bradford Bridge a continuing asset to our community.

Beth Rodd, May Editor



Town Clerk Update

With Spring comes overdue Dog Licenses. There are still 280 (ouch) dogs that have not been renewed with their 2014 license. As of June 1st there will be additional \$1.00 late fee as required by RSA 466:1. Please remember to bring any updated rabies information.

Our office will be closed Saturday, May 24th and Monday, May 26th for Memorial Day weekend.

We will be open Saturday, May 12th 9:00 - Noon.

Erica Gross, Town Clerk/Tax Collector

Melissa Cloutier, Deputy Town Clerk/Tax Collector

Lake Massasecum Campground

Come and enjoy a day at the beach

Bring your grill. Boat rentals

Small arcade. Soft serve ice cream

Rates: 12 & up \$5 3-11 \$2 under 3 - free

Season passes available 938-2571

Bring in this ad and take \$5.00 off Season Pass





The First Baptist Church

Your Community Church

Are you a mom? want to spend an hour with Pastor Lynne and other mom's in the community? Try us on any Tuesday at 10:00 at the church office- even once-discuss a new book called "Love Dare for Parents", childcare provided.

"WIERD ANIMALS"- put the date on your calenders for VBS (vacation bible school).

June 23-27th- lots of fun/games/bible stories/songs/treats grades pre-k through grade 5.

Do you know someone who could use a box of food? Your Community Food Pantry is open on May 21, 5:30-6:30.

The Youth Group is doing a "Rise Again Ministry" outreach by going to the Friendly Kitchen in Concord and handing out goody bags of treats to the homeless. Saturday, May 10. Call if you want to tag along....

Are your looking for a summer Christian camp? Kevin Van Brundt from Camp Sentinel will be in church to talk about camp life on May 4. Everyone welcome!

On the first Saturday of each month, 20 + men come together for Fellowship at the church office. Drop by at 8:00 am, if you want to come, share breakfast and make a connection.

www.tallpinesnh.com

938-2366



Ann C. Hallahan,
Broker/Owner

Laura Hallahan
Laura Squires



We are proud to introduce

Laura Squires

as a new Sales Associate!

Laura and her husband Nick, daughters Allison and Anna live on Sunset Hill Road. Give Laura a call to buy or sell as she knows the Bradford area well.

Welcome, Laura!

Office: 938-2366, ext. 3

Cell: 748-9081

lsquires@tallpinesnh.com

Tall Pines Realty
1 Center Road, P.O. Box 525,
Bradford, NH 03221
(603)938-2366 Office
(603)938-2654 Fax

Located by the Bement Covered Bridge since 1988!

YOUR LOCAL SOURCE PROVIDING



BUILDING ANALYSIS • ENERGY AUDITS • DESIGN/BUILD SERVICES
RENOVATIONS, ADDITIONS AND COMPLETE HOME CONSTRUCTION
BUILD IT BETTER • BUILD IT GREEN • BUILD WITH BRUSS

PO Box 456 Bradford, NH 03221 • 603-938-2069 • WWW.BRUSSCONSTRUCTION.COM

Sarah W. Chapin
Registered Pharmacist



• PO Box 718 • Henniker, NH 03242
Phone (603) 428-3456 Fax (603) 428-7793
Email: HennikerRx@aol.com

Area Events

Newbury

Events at the Fells

Annual Heather Pruning

Saturday, May 10: Learn about gardening with hardy and beautiful heather as you join members of the Northeast Heather Society while tending The Fells heather bed.

Dwarf Conifer Solutions for Your Landscape

Monday, May 5, 1-2pm: John Lyons of Newbury NH has been growing a variety of NH hardy conifers and dwarf conifers for over thirty years will lead the tour through the winding paths of his garden.

Tuesday, May 6, Time 1-3pm: Join us for a unique opportunity to view a selection of Rev. Cowing's bonsai, and to hear a discussion of the variety of styles and species that are used for bonsai.

National Public Garden Day Friday-Sunday, May 9-11, 9am-5pm

As part of the seventh annual National Public Gardens Day, join The Fells in a nation-wide celebration of public gardens. Explore the beauty of The Fells and discover the colorful spring blooms in the Rock Garden and the fragrant blossoms of early flowering trees and shrubs.

Birding Basics

Saturday, May 10, 7:30-9:30am: Peter Newbern leads this gentle immersion into bird watching for beginners. Participants will stroll along the Fells gardens and trails in quest of the sights and sounds of our avian spring migrants and year-round residents.

Bird Crazy on the Veranda

Saturday, May 10, 9:45-11:15am: Learn more about songs of our native and migratory birds through our Bird Talk program.

Out and About in Nature: Blooms, Buds and Bugs

Monday, May 12, 10-11am: Investigate the best of the Spring season. Get out and about in nature at The

Fells! This program is designed for pre-school age children and their caregivers and is filled with hands on learning through sensory experiences, guided exploration, creative play, art, and music.

John Hay Statesman for the World

Saturday, May 17, 2:30-3:30pm: The twentieth century has been universally acknowledged as "America's Century" because of the dominance of the United States on the world stage. However, America's preeminence in foreign policy originated in the late 19th and early 20th centuries under the leadership of John Milton Hay. This overview of John Hay's vision of American participation in global concerns by history professor Sandra LeBeau will be followed by a closer examination of each of his primary initiatives which changed America's perception of the world and their perception of us. Members free, non-members \$8. Registration required.

Opening Reception for Members and Guests

Friday, May 23, 5-7pm: Celebrate the opening of our exciting 2014 season and be among the first to see the season's new exhibits including: *Art in Nature 2014*, an outdoor sculpture exhibit curated by Pam Tarbell of Mill Brook Gallery & Sculpture Garden; *Architecture in the Landscape*, a gallery exhibit presented by the New Hampshire Art Association; and *The Women of the Fells* and *The History of the Hay Estate*, new history and ecology exhibits in our Main House.

Inspirational Garden Design

Tuesday, May 27, 1-3:30pm: Master Gardener Cheryl Kringing Grabe will cover elements of design and techniques, including focal points, paths, structures, perspective, contrast, mass, and symmetry. These design concepts pertain to even containers and pots.

The Fells: A View from the Kitchen, Laundry, Fields and Barns.

Special Tours of the Main House and Grounds:

Saturday, May 31, 4-6:30pm

For specific details and costs for the calendar activities, contact The Fells Historic Estate and Gardens, 456 Route 103A, Newbury, NH. 603-763-4789 x3, www.thefells.org.

Hillsborough

High Tide Restaurant Cruise Nights

May 14 through September 17th 2014, 5-8PM Wednesday evenings at 239 Henniker Rd., Hillsborough NH 0344

Food discounts, ice cream, driver prizes, 50/50 raffle to benefit Hospice House in Concord. Open to all types of special interest vehicles
Contact info:

hightidetakeout.com

or Mike Coulters, (603) 464-4202
Clayton & Mary Heath, promoters of cruise nights

mcheath@tds.net or (603) 526-9382

Newport

Carnutz Car Club Cruise Nights

May 12 through September 8, 2014 6-8PM Monday evenings at the Sugar River Bank, parking lot, North Main St., Newport NH 03773
Food discounts, ice cream, driver prizes, 50/50 raffle to benefit David's House in Lebanon NH
Open to all types of special interest vehicles.

Contact info: Wayne Boardman, President of CarNutz Car Club 603 477 2929. wayne1940chevy@yahoo.com

Special Events For 2014
September 1st cruise will be held from 3-6PM
RAT ROD show - July 21

We're the hometown bank for all of your personal and business banking needs.



How can we help you?

Newport | Grantham | New London | Sunapee | Warner | 800-562-3145 | sugarriverbank.com | Member FDIC | Equal Housing Lender

Warner**Mt. Kearsarge Indian Museum's Events****New Exhibit – “Giona Sezoha G’dakinna: We Paint Our Land”**

May 1- July 13. Fine art in the Contemporary Art Gallery including paintings, drawings, pottery and carved shell.

Exhibit Opening Reception May 4, 2pm-4pm for Giona Sezoha G’dakinna. Admission to the art gallery is free.

Beadwork Class: Rosettes May 18, 10am-3pm, taught by Andy Bullock. \$30 members, \$45 non-members. Call to pre-register.

Beadwork Class: Raised Beadwork May 24, 10am-noon, taught by Rhonda Besaw. \$30 members, \$45 non-members. Call to pre-register:

Info or pre-registration: 603-456-2600, www.IndianMuseum.org, info@IndianMuseum.org

Bradford Historical Society Flea Market

Come to the the Flea Market at the Village Smithy on East Main Street on Saturday May 24th, sponsored by the Bradford Historical Society. To reserve a table call 938-2078. Bring the family to enjoy the new exhibits at the Tin Shop next door, as well as demonstrations by craftspeople.

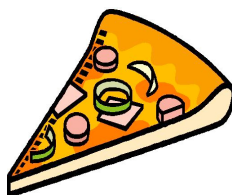
Alert to Advertisers

To ensure that your ad is printed as you (and The Bradford Bridge) wants it to appear, it must be submitted in “press quality” PDF format, at least 300 pixels per inch (ppi). The Bridge cannot be responsible for the reproduction of your ad if this format is not provided. Also, keep in mind that trying to fit too much text in a small ad can lead to less than satisfactory results. Firm deadline is the 20th of the month.

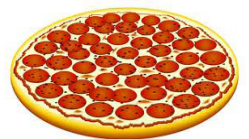
Your understanding and help in this matter is appreciated.

NEWBURY PALACE PIZZA HOURS

Sunday - Thursday 10 a.m. - 9 p.m.
Friday - Saturday 10 a.m. - 10 p.m.



104 Route 103
Newbury, N.H.
Next to the Rolling Pin
Gift Certificates Available
938-5050



We deliver! Come and see the BEST PRICES in the AREA

Bradford Fish And Game News

From the Club President, Fritz von Beren

Over the past six or seven years the Fish and Game Club has expanded the number of programs it provides for the community and its members. We now run two hunter safety classes a year, the Spring Trout Derby, the Kids Ice Fishing Derby, Youth Day (archery and firearm safety class followed by all day range time and instruction), The Deer Pool, a deep sea fishing trip, and an annual pot luck wild game dinner. Other activities have been fly fishing and bass fishing trips, members and guests shooting days, Lake Todd fishing tournaments, family BBQ's and more. In order to run these events we have various fundraisers including multiple annual raffles and the Deer Pool (competition for heaviest deer taken during the season). With the help of our members and friends there have been ongoing renovations and upgrades both inside and outside the clubhouse itself.

The biggest for news for 2013/2014 is the purchase of 4.4 acres of property that abuts the lot the clubhouse sits on. We also may have the opportunity to purchase 6.6 additional acres that abut the 4.4 acres and our original property. With the land purchase and possible additional purchase our options to expand in the direction everyone has talked about for ten years is looking good. If nothing else, we envision a more open area around the clubhouse for family and club functions plus a 3d archery course further back in a safe location. As you can see we have been and will be busy. There is not only a lot to do with our new property and possible additional purchase but with ongoing upgrades to the clubhouse and efforts to continue to run our existing programs, fundraisers, and the every day operation of the BF&G. With all this said, I am asking you to consider a 2014 membership—Active or Financially supporting, to the Bradford Fish and Game Club. Sign up, come to some meetings, get involved, help make this a club anyone in Bradford or the surrounding towns would be proud to be a member of! Please see our Website *BFandG.com* for further information.

The Bradford Fish and Game Club will host its annual **Kid's Trout Fishing Derby** on Sunday May 18, 2014 at Fishersfield Park in Newbury. It is on Old Post Road across from the Transfer Station. The pond is a short walk from the parking lot into the woods! This tournament is for children 15 yrs old and younger, but the whole family is invited to come out and enjoy the morning. Doughnuts and drinks will be provided.

Free registration begins at 7:15 AM. The fishing starting at 8:00 AM and continues to 10:30. Prizes and trophies to be awarded shortly after 11:00.

Stocking of the pond will be within the week before the derby. We hope the local wildlife will leave all the trout for the kids!



Lake Todd District News

Saturday, May 10, 8:30 am: The Lake Todd Village District will be cleaning up its section of State Route 103 which runs from Main Street to Fowler Mill Rd. Lake residents and others who care about the environment are encouraged to come and help. The group will meet at the Carl's, 57 Route 103 in Newbury at 8:30.

Saturday, May 31, 9:00 am: The Lake Todd Village District will hold a hearing in the Senior room of the Community Center to discuss the budget proposed for 2014. Voters and non-resident taxpayers are invited to attend and contribute to the discussion.

Questions? Call 938-2892

Bradford Women's Club

The Bradford Women's Club will be holding its annual dinner meeting on May 21, 2014, 5:30 at the Appleseed Restaurant. We are eating off the menu but I will need a count for seating. Contact Jackye at 938-5951. Dues can be made at that time or to PO Box 292, Bradford, NH 03221. This is open to all women from Bradford, Newbury and Sutton.



Delicious Pizza!



Dine in, call ahead, or get it delivered!

Appetizers, Subs, Salads, Dinners and more!

(603) 938-2600

Slices available all day



Daily Lunch Specials!

Located at the corner of Rte. 103 & Main - Bradford, NH



Library Lantern

by Meg Fearnley

First, we would like to thank the Friends of the Library for organizing the Egg Hunt, KRES Bradford fourth graders for their community service of stuffing 800 eggs, and MC extraordinaire Andrew Pinard (and his magic hat). What a joyous spring event!

LIBRARY BOOK DISCUSSION: The next book discussion is on Wednesday, May 21 at 7pm. Please note the date change. May's novel *Harvest* by Jim Crace takes place in "an agrarian community, a village that time seems to have forgotten, sealed against the wider world. Sealed, that is, until the novel's opening scenes, when covetous, irruptive forces begin to smash through those barriers." Crace excels at writing about societies facing change. On Wednesday, June 18 we will discuss *Servants of the Map* by Andrea Barrett.

BOOK & PLANT SALE: The sale is Saturday, May 24 from 9am to 2pm. Come stock up on books for summer reading and plants for your garden. All donations to benefit the library. Each year, these sales greatly increase our book buying capability.

The library is closed on Monday, May 26 in observance of Memorial Day. We are open our usual hours Sunday, May 25 (11am-3pm).

MARGARET BOURKE-WHITE: We are co-sponsoring a Humanities Council program with several other groups. Come to the Warner Town Hall on Wednesday, May 21 at 1:30pm to learn about *Margaret Bourke-White, Courageous Photographer* by Sally Matson.

SKY WATCH: The New Hampshire Astronomical Society will bring their huge telescopes to Bradford on Friday, May 30 (with a rain/cloud date of Saturday, May 31). Join us at 8:30pm at the hay field near the corner of Pleasant View Road and South Road, Newbury. You may bring your own telescope or enjoy the view through one of the large 'scopes brought by Society members. Open to all ages, be sure all flashlights are covered with red tape and kids, don't wear flashing shoes. Once your eyes are dark-adapted you can see so much more! Thank you to the Webb family for use of the field.

SUMMER READING PROGRAM: Just to let you plan for the summer, the dates for this year's summer reading program, Get a Clue at your Library, are Mondays, July 7, 14, 21 and 28 at 10:30am.

New books added to your library in April:

Adults

Destroyer Angel / Nevada Barr
Flash Boys / Michael Lewis
Shotgun Lovesongs / Nickolas Butler
The Secret Life of William Shakespeare / Jude Morgan
Boy, Snow, Bird / Helen Oyeyemi
Innocence / Dean Koontz
The Storied Life of A.J. Fikry / Gabrielle Zevin

Children & Teens

Outfoxed / Mike Twohy
If I Built a House / Chris Van Dusen

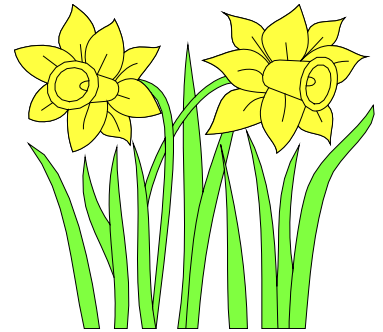
Library Hours
 Monday, 10-8
 Wednesday, 10-7
 Saturday, 10-3
 Sunday, 11-3



Spring Into Warner, Jump Into the Arts

Kearsarge Area Chamber of Commerce W.A.R.N.E.R. Group Hosts
 Day of Arts & Music

The WARNER group of the Kearsarge Area Chamber of Commerce welcomes spring with a family-oriented arts festival in Warner from 9am to 3pm on Saturday May 17. The town will be filled with art, music, crafts and more for all to enjoy. There are tons of great events scheduled for young and old. For more information email siw@kearsargechamber.org and check www.KearsargeChamber.org/Warner for a complete listing of activities, times and places.





TAKE-A-BREAK
 Interior and Exterior Painting

Free Estimates
 Fully Insured

Jay Hinnendael
 456-3396

Planning Board Notes

Membership: At the first meeting after Town Meeting, appreciation was given to Mark Keith for choosing to run and being elected to a three year term and to Claire James for a successful write-in campaign, also for a three year term.

The resignation of Philip LaMoreaux was accepted with regret and sincere appreciation for his many years of service on the Planning Board – starting as an alternate in 2004, and many years as both Chair and Vice-Chair of the Board. Phil and his family are moving from Bradford and will be missed by all those who have come into contact with him in his many capacities in the Town. His insight and technical knowledge will be especially missed by the Planning Board.

Jim Bibbo was approved by the Board to replace Phil as a member. Sonny Harris continues as the selectmen's representative. Officers elected for the year are Marcia Keller, Chair and Erich Caron, Vice-Chair.

The Board is actively seeking alternates to serve when a sitting

member is not available. Anyone interested in the position, is welcome to attend a Planning Board meeting (2nd and 4th Tuesday of each month, 7 PM at the BACC), listen and ask questions to see if this is an area of interest.

Regulations: Following a Public Hearing, several amendments to the Subdivision and Site Plan Review Regulations were approved. These will be incorporated into the documents and posted online at bradfordnh.org along with the Zoning Amendments approved by the voters.

Subdivision: The Board approved a subdivision and boundary adjustment for land on West and Fairgrounds Road, Map 4, Lots 5,21,24, and 25, owned by Chris Payson. Four parent lots were re-configured to create a total of seven lots.

Site Plan: A request for an extension to meet the conditions set for a boundary adjustment for Map 3, Lots 74A & 74B, property owned by Martyn Chivers on Breezy Hill Road, was approved until July 8. The Board requested that an update on the conditions of approval set for the Automotive Recycling Center on Map 3, Lot 74 A be provided at the same time.

Minutes of all meetings are on file at the Town Office and online at bradfordnh.org.

Representative French Wins Award



On April 5, 2014, State Rep., the Honorable Barbara French of Bradford and Henniker, was honored for her dedication as the Outstanding Legislator of the Year by NAMI, (National Alliance on Mental Illness).

Representative French has served in the legislature for over 15 years. As a nurse, she has worked in schools and in substance abuse prevention and treatment with the Department of Health and Human Services and the Department of Education. Most of her service to the people of New Hampshire has been through the Health and Human Services Committee. She is outspoken, kind and tenacious. Health care, mental health and public education are her core interests. Her advocacy for the issues she supports – increased funding for mental health and substance abuse services, as well as suicide prevention, has gained her bipartisan respect and the ability to collaborate with many differing voices on topics she and her constituents care about. Through her unwavering support and advocacy for mental health issues, Rep. French is very deserving of this award.

Holly Hack
Flowers Gifts
www.HennikerFlowers.com
Remember ♥ Mom

- ♥ Arrangements
- ♥ Centerpieces
- ♥ Gift Baskets

Mini Mall ♥ 8 Main St. Henniker, NH
57 North Stark Hwy (Route 114), Weare, NH
♥ 603.829.6447 ♥ Order Online 24/7/365

Selectmen's Highlights

Town Truck: Two bids were received from town employees. With a high bid of nine thousand one dollar (\$9,001.00) for the truck and plow, the truck was sold to Chris Aiken. Selectmen will hold a public hearing to deal with disposition of the unanticipated revenue.

Town Clerk: Erica Gross expressed concern that funds had been used from her budget to pay for expenses of Town Meeting and must be returned.

July 4th: Bradford's Independence Day Celebration will be held on Saturday July 5th. Bill Sharp, Director of The Mad Bavarian Brass Band, presented the selectmen with several choices of bands to participate in the parade. John Mock will be consulted before any decisions are made.

NFI: Selectmen will request NFI Director to attend a public selectmen's meeting to discuss some of the issues that have been raised.

CEDS: Five Comprehensive Economic Development Strategies (CEDS) applications were submitted to Central New Hampshire Regional Planning Commission. These included leveling the Jones Road sand pit for business use, a road through the Naughton property, business incubator at the

Transfer Station, solar array on the Naughton property, and moving the old post office to the smithy site and developing a parking area there.

Note: Jim Bibbo, Bradford's representative to the CEDS committee reported that all five projects were accepted by CNHRPC and will be ranked and forwarded to the federal Economic Development Office for consideration.

Sidewalks: Barry Wheeler, Road Agent, questioned the Warrantee for the sidewalks, expressing concern for a separation between the concrete and the granite curb. A picture has been forwarded to P. E. Mike Croteau who worked on the project.

Barking Dogs: Phil Byfield, a resident of Massasecum Avenue, stated that the dog barking has continued through the winter and he is concerned about summer when windows will be open. Consensus of the selectmen is to write a letter stating continued complaints have been received and they expect a resolution of the problem by May 15th or further action will be taken.

Minutes of all meetings are on file at the Town Office and online at bradfordnh.org.

Obituaries

Eleanor Kjellman

Henniker: Eleanor Glynn Kjellman died March 19, 2014, at Hospice House in Concord, after a courageous battle with cancer.

Eleanor was born in Boston on Dec. 31, 1946, to Thomas L. and Dorothy (Kilgallon) Glynn. She graduated from Ursuline Academy, Dedham, MA, earned a Bachelor of Science in Education from Boston State College and a Master of Science in Special Education from George Mason University, Fairfax, VA.


She began her professional career in the **U.S. Air Force** during the **Vietnam War**, at a time when it was not popular to volunteer for military service, and rare for women. She was commissioned as a Second Lieutenant and served as an Education and Training Officer at Andrews AFB in Washington, D.C., then as a Protocol Officer at 5th Air Force Headquarters in Tokyo, Japan.

After the air force, Eleanor lived a varied professional life, working as a computer programmer, corporate technical trainer, executive director of a chamber of commerce, loan originator for a mortgage company, classroom & special education teacher, and special education advocate. She taught college courses and was a home schooling parent.

She was on boards of directors of varied civic organizations, including the Central Oregon Youth Choir and the California Youth Rights Association. She was treasurer and co-chair of Merrimack County (NH) Democrats. In 2006, she was elected to a two-year term to the NH House, representing Bradford and Henniker.

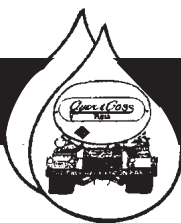
Eleanor is survived by her husband, John V. Kjellman of Henniker, son Curtis and family of Manchester, daughter Amy and family of Henniker, extrafamilial daughter Anna Encalada of Albuquerque, NM, sister Barbara Spangler of Santa Rosa, CA, brothers Joe Glynn of Daytona Beach, FL, Steve Glynn of Harrison, ID and Thomas F. Glynn of Santa Rosa, numerous uncles, aunts nephews, nieces, and cousins.

The family encourages contributions to Concord Regional Visiting Nurses Association, 30 Pillsbury St., Concord, N.H. 03301



FUELS

**24 HOUR SELF SERVICE
GASOLINE & DIESEL PUMPS**



Serving the area's heating needs for more than 60 years
FUEL OILS & LP GAS / COMPLETE HEATING SERVICE

938-5335

Route 114, Bradford • Hall Ave., Henniker . . . 428-3333

MAY CALENDAR

Thurs. May 1st

12 Noon - Senior Dining
1:00 PM - Mahjong

Fri. May 2nd

8:45 AM - Mt. View Sr. Ctr. Fitness
11:30 AM -First Friday Brunch
raffle, door prizes, and music

Sat. May 3rd

7:00 PM Rally 'Round the Flag'
The American Civil War through
Folksong - Tin Shop

Mon. May 5th

8:45 AM - Mt. View Sr. Ctr. Fitness
1:00 PM - Bridge
4:00 PM - Watercolor Class
5:30 PM - Selectmen's Meeting

Tues. May 6th

10:00 AM - Stitches from the Heart
12:00 Noon - Senior Dining
1:00 PM - Watercolor Class
7:00 PM - Revitalization Committee

Wed. May 7th

4:00 PM - Special Group #5
6:00 PM - Yoga
7:00 PM - Zoning Board

Thurs. May 8th

12 Noon - Senior Dining
1:00 PM - Mahjong
6:00 PM - Bible Study

Fri. May 9th

8:45AM - Mt. View Sr. Ctr. Fitness
1:00 PM - Mahjong

Sat., May 10th

8:30 AM - Lake Todd Village District
Route 103 road clean-up
9:00 AM - Noon - Town Clerk Open
9:00 AM - Writing Group

Mon. May 12th

8:45 AM - Mt. View Sr. Ctr. Fitness
1:00 PM - Bridge
4:00 PM - Watercolor Class
5:30 PM - Selectmen's Meeting
7:00 PM - Rural Heritage Connection

Tues. May 13th

10:00 AM - Stitches from the Heart
12 Noon - Senior Dining
Medicare specialist Anita Oelfke
1:00 PM - Watercolor class
7:00 PM - Planning Board

Wed. May 14th

1:00 PM - Knitting Group
Visitors and Joiners Welcome!!
6:00 PM - Yoga

Thurs. May 15th

10:30 AM - 12 Noon BP & Cholesterol
Screening Clinics - LSVNA
12 Noon - Senior Dining
1:00 PM - Mahjong
4:30 PM - BACC/P& R Committees

Fri. May 16th

8:45 AM - Mt. View Sr. Ctr. Fitness
9:30-11:30 AM - Foot Care Clinic
LSVNA at North Ridge Apt's
Call for appt. at 526-4077

10:00 AM - Friday at the Movies
Philomena Judy Dench & Steve
Coogan

12:00 noon - Senior Dining

1:00 PM - Mahjong

Sat. May 17th

9:00 AM - Noon - French's Park
Cleanup
March for Meals Walkathon Fund-
raiser, Horseshoe Pond.
Call Phil at 938-2104 - details &
pledge.

Sun. May 18th

8 - 10 AM - Kid's Trout Fishing
Derby, Fishersfield Park in Newbury.

Mon. May 19th

8:45 AM - Mt. View Sr. Ctr. Fitness
1:00 PM - Bridge
4:00 PM - Watercolor Class
5:30 PM - Selectmen's Meeting
6:00 PM - Play Chess, BML

Tues. May 20th

10:00 AM - Quilters
12 Noon - Senior Dining
1:00 PM - Watercolor class
6:00 PM - CIP Meeting

Wed. May 21st

10:30 AM -12 Noon - BP Clinic
Warner Senior Room (LSVNA)
1:30 PM - Margaret Bourke-White
Warner Town Hall. Admission free
Donations gratefully accepted
4:00 PM - Special Group #5
6:00 PM - Yoga
7:00 PM - Library Book Discussion

Thurs. May 22nd

12 Noon - Senior Dining
1:00 PM - Mahjong
6:00 PM - Bible Study
7:00 PM - Town Hall Restoration

Fri. May 23rd

8:45AM - Mt. View Sr. Ctr. Fitness
1:00 PM - Mahjong

Sat. May 24th

8:00 AM - 1:00 PM - Flea Market
BHS @ Smithy
9:00 AM - Writing Group
9:00 AM - 2:00 PM
Library Book & Plant Sale, BML
5:00 - 7:00 PM - Town Hall
Fundraiser Dinner at Masonic Lodge

Mon. May 26th

**Memorial Day Holiday
Senior Center Closed - No Meals
on Wheels, Town Clerk Closed**

1:00 PM - Bridge
4:00 PM - Watercolor Class

Tues. May 27th

9:30-11:30 AM -Foot Care clinic
Warner Pharmacy. Call 526-4077
10:00 AM - Stitches from the Heart
12 Noon - Senior Dining
1:00PM - Watercolor class
7:00 PM - Planning Board

Wed. May 28th

9:30 AM - You're Invited!! Introduc-
tion to Tai Chi, 1st Class is Free!!
10:30 AM -12 Noon BP Clinic
Warner Senior Room - LSVNA
1:00 PM - Watercolor Class
6:00 PM - Yoga

Thurs. May 29th

12 Noon - Senior Dining
1:00 PM - Mahjong

Fri. May 30th

8:45 AM - Mt. View Sr. Ctr. Fitness
1:00 PM - Mahjong
8:30 PM - Skywatch, NH Astronomi-
cal Society Pleasant View Rd. hayfield

Sat., May 31st

9:00 AM - Lake Todd Village District
Budget Hearing, BACC Senior Room
7:00 PM - Bradford Bog People
Center Meetinghouse
8:30 PM - rain/cloud date for Sky
watch

*For the MVSC call Phil at
938-2104 with your ideas
or questions*

*To schedule rooms at the BACC
call Jim Valiquet at 938-2522*

All events take place at the Brad-
ford Area Community Center
(938-6228) or the Mountain View
Senior Center (938-2104) unless
otherwise noted. Please call to
confirm dates and times in case
there has been a change to the
submitted information.



Abbreviation Key

BACC-Bradford Area Community
Center
BBC-Bradford Baptist Church
BML-Brown Memorial Library
FGC-Fish & Game Clubhouse
Gillingham Drive
KAP-Kearsarge Area Preschool
KRES-Bradford Elemen. School
MVSC-Mountain View Senior Ctr
TH-Bradford Town Hall

Rally 'Round the Flag

The American Civil War Through Folksong

MUSICAL EVENT AT BRADFORD HISTORICAL SOCIETY

TIN SHOP - 160 E. MAIN STREET, BRADFORD, NH

SATURDAY MAY 3 AT 7:00 PM - \$10 DONATION

Woody Pringle and Marek Bennett present an overview of the American Civil War through the lens of period music. Audience members participate and sing along as the presenters explore lyrics, documents, and visual images from sources such as the Library of Congress. Through camp songs, parlor music, hymns, battlefield rallying cries, and fiddle tunes, Pringle and Bennett examine the folksong as a means to enact living history, share perspectives, influence public perceptions of events, and simultaneously fuse and conserve cultures in times of change. Showcasing numerous instruments, the presenters challenge participants to find new connections between song, art, and politics in American history.



Ongoing Events

Children's Storytime - Mondays at 10 am and Wednesdays at 10:30 am at BML

Cemetery Commission - 2nd Thursday at 6PM/Call 938-2119 for info

Conservation Commission - 3rd Tuesday at 7PM, BML

Fish and Game Club - 1st Tuesday 7PM at Fish and Game Club

First Friday Bunch - 11:30AM at MVSC, reservations appreciated/
call 938-2104 for info

Historical Society - Tin Shop, East Main Street, Wednesdays 10-Noon

Library Trustees - 1st Wednesday at 6:00PM BML

Planning Board - 2nd and 4th Tuesday at 7PM, BACC

Rural Heritage Connection - 2nd Monday, 7PM, BACC

Selectmen's Meeting - Every Monday 5:30PM, BACC

Zoning Board - 1st Wednesday, 7:00PM, BACC

WALCO MECHANICAL CO.

REFRIGERATION, HEATING,

AIR CONDITIONING,
ELECTRICAL CONTRACTORS

COMMERCIAL • INDUSTRIAL • RESIDENTIAL

SERVICE • SALES • INSTALLATION

MAINTENANCE PROGRAMS
SYSTEM EVALUATIONS

938-2926

 *Warner*
Pharmacy
Old Fashioned Service. Modern Healthcare.

Cindy Snay, Owner/Pharmacist

11 East Main Street

Warner, New Hampshire

603.456.3556

Mon.-Fri. 9am-6pm & Sat. 9am-1pm

*Serving Bradford
with a community bank tradition*

Full-Service Banking • 24-Hour ATM
Drive-Up • Free Online Banking and Billpay

 **LAKE
SUNAPEE
BANK** fsb
the advantage of leadership

28 offices including Main Street, Bradford
938-2277 • www.lakesunbank.com

Equal Housing Lender • Deposits Insured by the FDIC

MEG'S CUT ABOVE

Meghan Raymond

CREATIVE STYLIST & AVON REPRESENTATIVE



976 Route 103 Suite 8
Newbury Harbor, NH 03255
603-763-3133

Bradford Police Officer Honored

On March 26, 2014 Chief James Valiquet issued the following Special Order commending Det Sgt. Edward Shaughnessy the commendation reads as follows:

"Commendation - Bradford Police Department Lifesaving Award
 Det. Sgt. Edward Shaughnessy
 On March 25th, 2014 Sgt. Edward Shaughnessy responded to a call of 6 month old child not breathing. Upon arrival he was met outside the home by the reporting party. The Sergeant entered the home and located the baby lying in a baby chair. The child's extremities were ridged and he appeared to be apneic. The child was making a ticking sound his eyes were rolled back and the Sergeant found the child's tongue was rolled back and his mouth full of mucus. Sergeant Shaughnessy then rotated the child on to his side while swiping out the child's mouth and moving the child's tongue clear of his airway. The child began to gurgle and the Sergeant continued to monitor his airway as the child began to fuss and cry. Once the child's color returned the mother was allowed to pick him up when it appeared that the child was again having some difficulty Sergeant Shaughnessy took the child back again placing him on his side and continued to monitor his airway

until the baby was turned over to Emergency Medical Personnel. I find that Sgt. Shaughnessy's quick intervention, life supporting steps and continued monitoring were instrumental in establishing and maintaining an airway in this 6 month old child. Sergeant Shaughnessy actions are of the highest standards in the traditions of the Bradford Police Department, and New Hampshire Law Enforcement, I therefore commend him this the 26th Day of March 2014 for a job well done."

The Bradford Police Department is proud to announce that on April 23rd Det. Sgt. Shaughnessy received a Citation from the Governor of New Hampshire and a Life Saving Pin from the American Heart Association. The ceremony was held at the New Hampshire Police, Fire, & EMS Foundation Banquet held at the Radisson Hotel in Manchester.



Bradford Business Association News

The Bradford Business Association has been very busy of late and more to come! We assisted the Transfer Station and Conservation Commission on Saturday, April 26th by cleaning up our section of highway from the lights at 103/114 heading east to Bagley Hill Road and the Warner town line. Our April Business After Hours was held at Lake Sunapee Bank on April 30th and we enjoyed learning about the bank and networking.

May will feature brick oven pizzas and other goodies as we travel up to Bible Hill Farm with our Business After Hours co-hosted by members Ledyard Bank and Bible Hill Farm, 206 Bible Hill Road on Wednesday, May 28th from 5:30 to 7:30PM. Remember, all are invited, you don't have to be a business or a member, we want to share with all what makes our area so special.

The BBA is also proud to host two new events in May. On Thursday the 8th of May at 7:00PM upstairs at the Bradford Area Community Center, member Susan Carl will present her slideshow of her recent trip to Antarctica. The following Wednesday on the 14th we host a trip to the Lily Lady in Sutton, 957 Route 114 for an outdoor tour and to learn about all the varieties that can be grown. Park on the road to Sutton Mills and this will be held from 5:30 to 7:30PM. Refreshments will be served at both events, so please come learn while supporting your local businesses and business-owners! Finally, don't forget to pick up your copy of the 2014 Member Guide at Town Hall and various other locations around town.

Laura J. Hallahan, Associate Broker

Dockside Hair Design

**Jenny Wright (Critch)
 Creative Stylist**

Walk-In Wednesday's 9-3
 Evening Appointment's Available

**17 Old Sutton Road, Bradford
 (603) 938-0090**

Large enough to meet your needs...
 Small enough to care!



BRADFORD
 938-5161

POWER BARN
 at BRADFORD
 938-2000

GOSHEN
 863-5601

True Value.
 START RIGHT. START HERE.™

Hugo's Electric, Inc.

Licensed & Insured
 RESIDENTIAL • COMMERCIAL

938-5573

3191 State Rte 114, Bradford



Letters to the Editor

Letter to the Editor:

Once again, the St. Peters Lodge has graciously agreed to put on another Fund Raising Dinner on Saturday, May 24th with Chicken and Fix'ins for the Town Hall Restoration Project, for which Sandy and I want to publically thank them.

Also, to all the bakers who have volunteered to make desserts for the 5:00pm to 7:00pm dinner, a big Thank You. It is actually fun to contact people to help, and they come back with what else can we do.

It is with this community spirit and involvement that we are accumulating necessary funds to help restore our beautiful old Town Hall. Thank You Everyone.

Sandy Paul
Marge Cilley

To the Editor,

I would like to talk to all the voters who voted to renovate the town hall and voted down the money to care for the roads. The town hall is a building - the roads are our infrastructure. The roads are much more important than a building. The town hall could be used for town meetings if gutted but where would the voters park? That's just a small problem. Think about what it would cost the town if our roads were impassible. Who would want to move to Bradford? If the voters don't put their hard earned money where it will benefit the majority then one day the roads will be

in such a terrible shape it will cost much, much more than renovating a building.

This building was moved down from Rowe Mountain as a schoolhouse. Use the town hall building as a useful place. She has some years left in her but not at the expense of our infrastructure.

Let's leave the Civil War and little children out of the situation. It's a building. Roads are a must.

Jane Johnsen

Editor's Note: Warrant Article Thirteen, called for raising and appropriating \$85,000 to work on asphalt roads in Bradford. Selectmen recommended. Budget Committee recommended. The article was presented to voters and passed at Town Meeting, 2014.

To the Editor,

As Bradford's most senior resident I'd like to tell the town how great I think our police department is. At a recent robbery of my home, they proved themselves to be most courteous, concerned, professional and helpful. Because of their expertise the culprit has been apprehended and most of my goods will be returned to me. Three cheers for the Bradford Police!

Louise Clark



Bear Advice

NH Fish and Game Conservation Officers would like to remind area residents that bears are now out and have resumed looking for easy meals. Natural food supplies are in short supply in early spring and as a result, bears are raiding bird feeders, dumpsters, chicken coops, etc. Please remember the following:

It is not enough to take down bird feeders at night. This will just encourage bears to be at your feeders during the day. Complete your bird feeding activities by April 1 each year. Don't feed the birds until late fall (the birds will do just fine).

Intentional feeding of bears is not only illegal but a completely selfish act of putting one's own personal interest's over that of the well-being of the bears and the safety of the community. Purposeful feeding can result in the bears getting accustomed to humans. This "habituation" of bears may cause a variety of conflicts with humans. The end result may be the removal (most often with lethal consequences) of the offending bear.

People with chickens, rabbits, bees, and livestock should utilize 4 strand electric fence to deter bears.

Keep dumpsters and trash containers secured at night. Lock and bolt both tops and sliding side doors.

People who observe bears in a residential setting would be best served by finding out who in their neighborhood is attracting the bears and make contact with them. Residents are encouraged to work within their community to make sure all garbage is secured, bird feeding has stopped, and there is no intentional feeding of bears. Encourage people to respect the bears as well as their neighbors. One person feeding bears can create a problem bear that may affect the entire neighborhood. If there is no food source, a bear will not remain in a residential area.

Preventing problems with black bears is everyone's responsibility!

Contact: Sergeant David Walsh
Region IV Office, Keene, N
603-352-4022

10 Questions - *continued from page 1*

high school was to go to the University of Rhode Island. I graduated with a degree in Community Planning and Sociology. My goal was to become a nurse but that didn't work out. I worked in social services and integrated planning. The next step was Claremont and River Valley College where I acquired an Associate in Science and Respiratory Therapy followed by Valley Regional Hospital where I started bedside teaching in the mid 80's.

Q. Your world changed in 2002 when your car hit black ice driving to Franklin where you had a teaching job. Your life as it was then shifted from active independence to life in a wheelchair. It must have been really difficult for you? How did you manage to cope?

I remember that it was not a bad day but there must have been that unexpected patch of ice that appears on the road when you least expect it. I was in the (ICU) Intensive Care for 20 days when I really did not know much of what was happening. I don't remember much at all of those days. I had two young kids in middle school. I knew I had to focus on my kids. There was a great deal of community support. I needed to become functioning and capable. I definitely had my down times but I tried to keep some of the functions that I had. I concentrated on therapy and tried to exercise in any way that I could. My goal was to take care of my kids

Q. You have lived in Bradford for 32 years, You were married and had two children who are now independent and leading their own professional lives. Can we talk about that?

The kids are doing well. Christopher is a financial planner for Edward Jones and is working in Hampstead. He just bought himself a condo in Exeter; Loretta works for a non-profit called Seven Hills. She is an art therapy coordinator and works with disabled adults. Both my children were inspired by my crisis and although it was difficult for them, it empowered them to move on with their lives.

Q. You spoke about your attitude toward life which was mostly op-

timistic. Over the years you have successfully managed to live your life and are working to help people with disabilities. You also referred to the fact that you learn by your own mistakes. Can you explain? I have had only a handful of jobs. I've done respiratory therapy and health education. I stopped working when my kids went to elementary school. When I had my accident I was teaching full time in high school. I wanted to be a high school guidance counselor but that did not happen. I started teaching at the Kearsarge Regional Adult Diploma Program. I'm still doing that two nights a week.



Q. After 32 years of marriage you were divorced in November, 2013, that must have been difficult for you. How do you manage to come through setbacks and go on to the next stage?

I have always been a survivor and always positive. I manage to move on to the next stage. I have a very supportive family. I've always been ahead of the curve. Success is a journey not a destination.

Q. Your employment history after the accident involved continuing education. You wrote grants, worked with schools and hospitals sometimes as a volunteer and sometimes paid. Your aim was always to work with young adults with disabilities. You always seemed to go to the next challenge. In 2006 I incorporated Sunset Hill Education Institute (SHEI). We work with other organizations like the YMCA to make people with disabilities feel comfortable and prepare for employment.

Q. What are your future plans? Do you see yourself remaining in your present home and continuing your school and other activities?

I want to remain at my home which is also "Sunset Hill" my working en-

vironment. I would like to keep going with all my non-profit activities. I do enjoy special activities with my two kids. We attend plays, musical events together, whatever is going on at the time. We try to do this once a month.

Q. Prior to your accident you were very active and enjoyed many athletic activities. Were you able to find new ways to continue some of the things that were part of your life?

I was always athletic. I have managed to find new ways to do things. I swim in the therapy pool at Crotched Mountain about 6 hours a month. I downhill ski and kayak and water ski. I am a member of the New England Handicap Sports Association (NEHSA) which is run at Mt. Sunapee. Life goes on but adjustments have to be made.

Q. What types of entertainment are part of your life? Do you have a circle of friends?

I enjoy entertaining, and going out to dinner. I try to stay in touch with different people. I do have a circle of friends.

Q. I understand that you have drawn back from some of your work activities.

I have recently resigned from the Governor's Commission on Disabilities as the Information Researcher. I did that from 2011 to 2014. I worked with helping people with disabilities four days a week. It became too much for me. I had to be awake at 5 a.m. and the caregiver had to be there to help me get ready for a 9 a.m. start. It was getting too much for me and for my help.

Q. Are there things that you might like to do over and change if it were possible?

Of course I would like to change the fact that there was an accident that changed my life. Also, I am a direct person and I always say what I want to say, sometimes people don't see the connection or meaning of what I say? I guess you could say that I am too direct and should take more time to prepare a response to questions.

Along the River: Exploring Community Connections

Four Rivers, Five Communities, Eight Organizations

New Hampshire's people settled along its rivers and built communities for over 10,000 years. They found shelter, food, water power, paths for travel and communication, and places to work and play that connected their lives. Eight local organizations explore the fluid relationships between natural and human communities along the Warner, Lane, Contoocook and Merrimack Rivers in collaborative exhibits and programs during the summer of 2014. These rivers connect us to nature, to our history and to each other.

Participating museums include the Bradford Historical Society, Hopkinton Historical Society, The Little Nature Museum, Mt. Kearsarge Indian Museum, New Hampshire Telephone Museum, Penacook Historical Society, Sutton Historical Society, and Warner Historical Society.

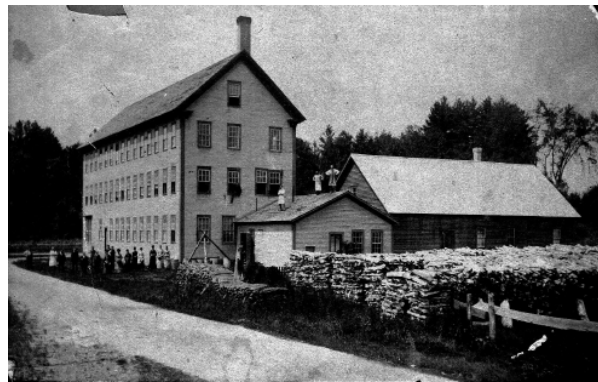
Exhibits include The Little Nature Museum, which will share examples of plants and animals found along the river, and the Mt. Kearsarge Indian Museum, which will explore Native American uses of these food resources in a joint exhibit at the Mt. Kearsarge Indian Museum. The rich history of the area's mills will be found at the Bradford, Hopkinton, Penacook and Warner Historical Societies and the New Hampshire Telephone Museum. Travel and recreation on the rivers will be highlighted at the Hopkinton Historical Society, Mt. Kearsarge Indian Museum and Penacook Historical Society. The New Hampshire Telephone Museum will share photos and stories of natural disasters along the rivers and how communication was affected. All exhibits open May 1.

Accompanying the exhibits is a diverse array of programs and hands-on activities including lectures, outdoor experiences, history walks, a concert and an historical re-enactment. The Bradford Bog People will perform in Bradford in May. Talks include Native American fishing, mill history, covered bridges,

fish habitats, invasive species, 17th-century maps and natural disasters. Sutton will offer a living history reenactment in August. Plans also call for mill walks, cider making, water testing, and a canoe trip on



The Bartlett Excelsior Mill in Warner which produced fine and coarse poplar shavings to stuff furniture, mattresses, baseball gloves and packing material for fragile objects.



The Merrimack Glove Company in Warner which processed leather to manufacture gloves, pants, vests and jackets.

the Contoocook. You can even win prizes by attending programs.

The project is funded in part by the New Hampshire Humanities Council and Sugar River Bank. Raffle tickets for a kayak will be available at each program. The raffle drawing will be held at our final event, the College of Saint Mary Magdalen Fish Fry on October 17. For the full schedule with dates, times, locations and raffle information see <http://www.AlongtheRiver.org>.



Telephone communication disrupted by flooding.



We may no longer be called Cobble Pond but
OUR FABULOUS INDIAN FOOD is still here! TAKE OUT
ON WEDNESDAY AND FRIDAY

Bradford Market

Groceries - Indian Spices & Indian and Eat Dishes - ATM - Beer & Wine Lottery Tickets - Gifts - Sodas - Snacks - Copy Machine
- Coffee - Sandwiches - Auto Supplies - Toys - Magazines & Newspapers - Video Rentals

OPEN SEVEN DAYS - 6 am- 10 pm

Route 103

938-2662

Bradford, N.H.



VNA News



Home Care Matters!!

Did you know...? May 6-12 is National Nurses Week!!!

National Nurses Week 2014 Nurses Trusted to Care

Often described as an art and a science, nursing is a profession that embraces dedicated people with varied interests, strengths and passions because of the many opportunities the profession offers. As nurses, we work in emergency rooms, school based clinics, homeless shelters and homes, just to name a few. We have many roles, from staff nurse to educator to nurse practitioner and nurse researcher – and serve all of them with passion for the profession and with a strong commitment to patient safety.

Annually, National Nurses Week begins on May 6, marked as RN Recognition Day, and ends on May 12, the birthday of Florence Nightingale, founder of nursing as a modern profession. During this week, registered nurses all over the country will be honored.

Traditionally, National Nurses Week is devoted to highlighting the diverse ways in which registered nurses, the largest healthcare profession, are working to improve healthcare. From bedside nursing in hospitals and long-term care facilities to the halls of research institutions, state legislatures, and Congress, the depth and breadth of the nursing profession is meeting the expanding healthcare needs of American society.

www.lakesunapeevna.org 107 Newport Road New London, NH 03257 (603) 526-4077



MainStreet BookEnds

www.mainstreetbookends.com

Store Info, Browse, Order Books & eBooks

Books and Toys

Visit MainStreet MarketPlace & Gallery
Local Art, Products, a "Third Place" to Gather & Relax

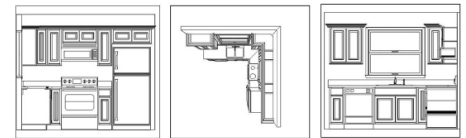
OPEN EVERY DAY 9 ~ 6
100% Solar Powered!

16 E. Main St., Warner 603-456-2700
~ Cultivate Community ~ Shop Locally ~

Celebrating Our 10 Year Anniversary

Black Diamond Kitchens & Baths

Made in America



\$10,000.00 Includes

- 8' x 8' L-Shaped Kitchen
- All Wood and Plywood Cabinet Construction Cabinets
- Your choice of Cherry, Red Oak, Maple, Hickory
- Soft Close doors and Full Extension Soft Close drawers.
- Select Quartz or Granite Countertops
- 18-Gauge Single or Double Bowl Stainless Steel Sink Installed

www.blackdiamondkitchensandbaths.com
52 W. Main Street Hillsboro NH
603-464-2121

COONEY ELECTRIC

FAMILY OWNED SINCE 1926

LICENSED MASTER ELECTRICIAN - NH / VT

WHEN QUALITY COUNTS
CALL COONEY!

938-2415

at Newbury Harbor

Bubba's Catering is available for all occasions! 603-763-3290
976, Rt 103, Newbury, NH
bubbahmplt@tds.net bubbasbarandgrille.com

WALKER
AUTOMOTIVE
Quality < Dependable > Friendly
Automotive Service & Repair

Major & Minor Repairs
Foreign & Domestic Vehicles
www.WalkerAutomotiveInc.com

603-526-4848
Rt 11, Wilton, NH

New Garden Trends in 2014

by Laura Hallahan, Associate Broker



Spring is finally here and improving a home's landscaping offers a win-win-win be it greater enjoyment, increased home values and enhanced curb appeal that will attract buyers. Before you start, know the topography, orientation and climate as well as your budget. Here are the popular trends according to REALTOR® Magazine:

Low Maintenance. Buyers, especially second-home buyers, do not want yards that require a lot of time and effort to maintain. Use plants that don't have to be constantly watered, fertilized or pruned and for decks and patios use materials that don't require constant repainting or replacing and furnishings that can be left outdoors. Add color with accessories and with Annuals in gardens or even consider wildflowers. Container pots are another easy idea.

Entertaining Outdoors. Buyers love an outdoor entertainment space, maybe because our warm weather is so short-lived. Decks and patios should have enough space for seating. A nice grill or outdoor kitchen and a TV or stereo system and you have another room! Storage units and countertops are now frost proof and upholstery is more fade-resistant.

Green Gardening. Use native vegetation that can easily survive in our region & has the added benefit of attracting bees, butterflies & birds. Having less lawn and more hardscape such as gravel or brick can add interest while allowing water to penetrate. Many home owners are adding raised beds to grow herbs and vegetables as these, too, are more manageable. Also look to re-purposing items such a stones, lumber, metal, etc.

Extended Use. Don't forget about lighting which adds warmth and is a key for extending backyard enjoyment. You can also add a fire pit, chiminea or fireplace for colder nights.

Finally, don't forget the front yard. Even though most home owners do not use their front door, a nice walkway, inviting front door and good lighting will go a long way to having a buyer want to look inside.

Recent Sales in Bradford

- 195 Cressy Road, 1940 Cape on 2 acres for \$121,000 (foreclosure)
- 25 Sunset Hill Road, 1977 Contemporary on 2.20 acres for \$179,000
- 1 Gillingham Drive, 2.80 acres of vacant land for \$41,800 (auction)
- Lot 14 North Ridge Road, 11.49 acres of vacant land for \$48,000

Inventory continues to be down though the spring market is here and it will no doubt increase. There are 21 active residential and 5 pending listings ranging from \$68,200 to \$1.25 Million, 27 active and 0 pending land listings ranging from \$26,900 to \$2.5 Million, 3 active and 0 pending commercial listings ranging from \$189,900 to \$650,000 and 0 active and 0 pending multi-family listings in Bradford. One pending residential listing is a short sale.

A Culinarian's Column

by Caryl Walker

After this endless winter, I wanted a Spring-y recipe. A colleague at school suggested this strawberry jello pie. I was dubious, but intrigued when she said that she was always asked to bring it to a get-together. Of course, I didn't get the recipe so started on the internet. There were hundreds of these recipes! I did my research, tried a few out, and decided I could endlessly try these recipes with very similar results. Here's my version.

Strawberry Jello Pie

¾ cup sugar
2 tablespoons corn starch
2 cups cold water
1 3-ounce package strawberry jello
1 9-inch baked pie shell (I used a store bought one.)
1 pound fresh strawberries

1. In a small bowl mix the sugar and corn starch together with a wire whip. Set aside.

2. Place cold water in a medium sauce pan. Stir in sugar mixture with a wire whip. Set over medium heat and bring to a boil, stirring constantly. Cook 2 to 3 minutes until thick and clear. Remove from heat.

3. Stir strawberry jello into thickened hot mixture until the jello is dissolved. Set aside to cool for 15 minutes. Then refrigerate for another 15 minutes to cool and set.

Available for casual dining Tuesday - Sunday

The Appleseed Restaurant and Catering We're Affordable!

Tuesday - Friday, 5:00-9:00 PM, Saturday and Sunday, 4:00-9:00 PM and
Sunday Morning Brunch from 8:00 am-Noon.

Celebrating
our 35th year
of business in
Bradford

**Have you tried our new Menu yet, featuring
local Eccardt beef and new pasta entrees.**

Check out our restaurant at **938-2100**
www.appleseedrestaurant.com

We buy local,
hire local, and
support local
organizations

Searching for Indian Tie-up

by Heather LaBelle

On page 25 of Bradford's "Two Hundred Plus, Bradford, New Hampshire in Retrospect" is a picture of a magnificent rock cliff, slanted and overhanging above a group of solemn looking settlers. On page 186 you will find a small blurb describing the historical significance of this beautiful natural feature, along with a short description of how to get there, circa 1976. The place is called "Indian Tie-up" and as legend has it, this is the place where Native Americans living on the shores of Lake Massasacum in the summer months would retreat during the winter months. If you don't own this book already, you should immediately get to the Historical Society and find out how you can get a copy.

I started taking an interest in the book when I was in high school, as did my good friend Seth. Let's be honest, in the town of Bradford there is not a lot of entertainment options for teenagers- not in the 90's and not today. In our junior year of high school we discovered the tid-bit of Indian Tie-up and decided to make it our mission to find this place; the treasure hunt was about to start.

The first excursion started on a warm spring day from Rowe Mtn. Rd. I have no idea how we deciphered the walking instructions in the history book to determine that we needed to start across the street from the Smith's house on Rowe Mtn. Rd., but somehow we did. Armed with three compasses that all had different readings, five of us set forth with the intention to head due south-west for approximately 1 1/2 miles. Two hours later we stumbled onto County Rd. at the top of Silver Hill... clearly not the direction we intended on (it would be three more years until I took my first official map & orienteering course and finally figured out how to read a compass properly). Over the next ten years Seth and I would take several hiking trips through the woods of Bradford,

possibly roaming in to the corners of Warner, Henniker and Hillsborough at times, in search of Indian Tie-up. After our first forage from Rowe Mtn. we determined we had left from the wrong place and began the rest of our adventures from the top of Day Pond Rd. Today the ridge trail between Bradford and Henniker remains one of my favorite places for walking, mountain-biking, skiing or snowmobiling.

It would be eleven years until I finally found Indian Tie-Up. By this time Seth had moved down to MA and I was now searching with my

what day and age, would be building a stone wall where this one still stands today.

I have only been back twice since then. The first time was the following fall when I led family members to the spot. The area had since been logged and the ground was cluttered with brush. The hike was difficult and at the end, the area seemed much less majestic than the first time I was there. The third and last time I "hiked" there (bush-whacking being a more operative term) I led a large group of friends and all of our children on the adventure.

These days, the gate at the bottom of the logging road across from Day Pond is usually closed, so that day we parked at the bottom and hiked up the road. The beautiful and tranquil pond is still my landmark for the start of the trail, although after spending a lot of time pouring over maps and snowshoeing and skiing through the woods this past winter with my father I believe there may be a quicker way to get there. Regardless, we set



good friend April. It was a beautiful fall day in 2002 that we found the spot with a little help from some friends. A huge logging operation had begun that year across Rt. 114 from Day Pond, and the company that was doing the logging had built roads so sturdy that I was convinced a housing development was going to be built along my sacred ridge. Frustrated and sad about the prospect of this natural wonderland being developed, I was at the same time intrigued by the amount of effort and the quality of roads that had been built for this endeavor.

From the pond, heading north back to Bradford on 380, take a left hand turn into the thicket, and head due south for a while.... you know you are heading in the right direction when you cross over a stone wall that was built through a group of large boulders in the middle of the forest and are asking yourself why anyone in their right mind, no matter

off with seven kids one warm summer day last year and braved our way through wet and mushy ground and through acres of prickles that have grown up since the logging. Signs of moose were everywhere- we had to watch every step to avoid stepping in scat, and eventually we even came across a moose carcass that had recently been scavenged by coyotes. Despite the bugs, the dead moose and the eventual heat of the day, we found our destination. This time, I admittedly felt much more relief than reward when we finally stumbled across the cliff. Yet, at the end of the day when we returned to our cars, exhausted from the activity (and extremely itchy), I was hopeful that the feeling of adventure that I had found in our history and our forests as a child may have been handed down to another generation.

Ice Out



Marcia Keller reports the official ice out date for Lake Massasecum was April 19, right in the usual time frame despite the cold winter. Photo taken at the Casino where the only ice visible was on the beach - none in the Lake. Spring is finally here.

Bradford Bridge Advertising Rates

Basic rate is \$8.00 /column inch
One column inch (2 3/8" wide)

x 1" high	\$8.00
x 2"	\$16.00
x 6"	\$48.00

Two column inches (4 7/8" wide)

x 1" high	\$16.00
x 2" high	\$32.00
x 3"	\$48.00
x 8.5"	\$96.00
1/2 Page	\$120.00
Full Page	\$240.00

Other ad sizes as designed will be pro-rated

Notes: 10% discount allowed for local non-profits, paid-in-advance and 12 month ads.

Political ads must be pre-paid
Ad copy should be sent in PDF format by the 20th (firm) of each month to:
contact.us@bradfordbridge.com



Lake Sunapee Region
VNA & HOSPICE



15th Annual Women Who Make A Difference LUNCHEON

*Celebrate by bringing an extraordinary woman you know...
... mother, daughter, sister, friend!*

Wednesday, May 14, 2014

11:30 am • Colby-Sawyer College • \$40 pp to benefit Pediatric Care



Guest Speaker:
Ginny Reed PhD MPH
Educator and Researcher, Geisel School of Medicine at Dartmouth
"Serendipity, Sisterhoods and Silver Linings"

- Annual Awards • Music • Raffles • Inspiration & Fun!

Reserve your seats today.

PO Box 2209 • New London, NH 03257
603.526.4077
www.lakesunapeevna.org

Belanger Roofing

Roof Shoveling
Interior Painting and Remodeling
Emergency Repairs
Call John 938-2858

Henniker Veterinary Hospital



Small Animal & Equine Practice

Alyssa J. Brust, DVM
Robert A. Brust, DVM
Amy Jones, DVM
Samantha Mazzucola, DVM

House Calls Available

428-3441

Maple Street, Henniker



From the Transfer Station

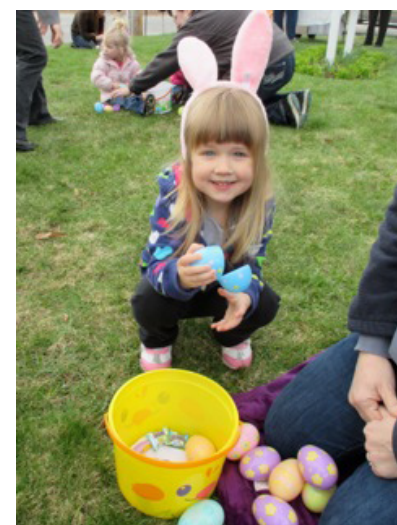
-Lois Kilnapp, Manager

At the Bradford Transfer and Recycling Station, plastics are categorized. Plastics #1 are clear see through (tall) bottles, such as water, soda and juice bottles. Plastics # 2 are cloudy or solid colored bottles, such as milk jugs and laundry detergent jugs. All bottles and jugs must have the caps removed. There is a small barrel near the plastics baler to receive the caps.

Although the short and square produce containers are stamped #1, they are chemically not the same as the tall bottles stamped #1. The short and square produce containers are not being recycled at this time. If you are confused about recycling any plastics, ask Ken or me for advice.

In 2013 the Bradford Transfer and Recycling station sold 22,928.47 pounds of plastics. We netted \$2,348.47 and saved \$68.00 per ton in tipping fees. Nike is a major buyer of plastics #1. They have invented a super lightweight athletic shoe made from 100% plastics #1. Plastics #2 is purchased by outdoor furniture companies. So, while you are jogging or lounging in the spring sunshine, you may be enjoying the transformed plastics you recycled at the Bradford Transfer and Recycling Station

Easter Egg Hunt -Bradford Style



2014 Bradford Center Meetinghouse Events - clip and save -

May 31 at 7pm - Bradford Bog People - American roots music - \$10 donation, For information, call 938-2370

June 14 at 7pm - Open Mike Coffeehouse with dessert, potluck supper starts at 5:45 pm For information, contact barbsouthard@gmail.com or (540)230-1778

June 21 at 7pm - Mink Hills Band - varied acoustic experience - \$10 donation For information, call 938-2370

July 18 at 7:30pm - Lettvin Concert - Stephen Drury - pianist with violin and cello - \$15 For information, call 748-9597

July 19 at 7:30pm - Lettvin Concert - Gary Louie (saxophone) and Kristin Taylor (piano) - \$15 For information, call 748-9597

Aug 2 from 9am to 2pm - Flea market and Quilt Show Contact barbsouthard@gmail.com or call (540)230-1778

Aug 3 at 2pm - Kearsarge Community Band and Ice Cream Social - Free - For information, call 938-2370

Aug 23 at 7pm - Swing a Cat - music from 30s and 40s - \$10 donation For information, call 938-2370



For further information, call Laurie Buchar at 938-5372 or at lbuchar@gmail.com