



# THE Bradford Bridge

COMMUNITY NEWS FOR NEIGHBORS BY NEIGHBORS

Volume 22, Number 5; Issue 238

May 2011

## State Budget Impacts District Education Kearsarge Regional School District News

By Andrew Pinard

At KRES Bradford, students have completed a theme week focused on science. There is a lot of excitement in the air as the weather warms up and snow melts away revealing ballfields, playground equipment and trails. Kids are taking advantage of the change of seasons to get outside and explore, their natural curiosity driving them to learn more about the world around them. A number of fieldtrips to outdoor learning opportunities (The Fells, Odiorne State Park and others) are planned (sponsored in large part by ChiPS and the parent fundraising) and students will use their knowledge of science to make and test their hypotheses regarding how the world works.

Recent initiatives include the use of technology to bring our community closer together. Skype (internet video conferencing) has allowed our elementary students to collaborate with their off-site "colleagues" to work on a variety of projects.

The change of seasons often heralds transition. At the end of June, Assistant Superintendent Robin Steiner will be leaving the district for a new challenge in the "wilds" of Kentucky. Robin and her daughter will join Jon Steiner (my predecessor on the school board and former Bradford Town Moderator) as they begin to build their new life outside of New Hampshire (although I hope we will see them at French's Park during the summer). Robin has been a tireless worker and positive force for the district and responsible for many exciting programs that will benefit our students for years to come. We will miss her. Mark MacLean, previously the Dean of Academics at Alvirne

High School in Hudson, NH has been hired as our new Assistant Superintendent and will begin work in July (although both Robin and Mark have already been working to affect a smooth transition).

The School Board has had to make some difficult decisions of late to react to not only the reduced budget supported by the voters but also to plan ahead for expected budget cuts from the State House. We have already eliminated positions and some sections of electives at the high school and voted recently to close the Springfield Kindergarten facility. While we will realize some savings from moving the students to KRES New London (where we had space available), by consolidating we are causing some difficulty to the parents and community of Springfield. This was not an easy decision, but staff will be working with Springfield parents and students to help in the transition in the fall. One goal is that kindergarten students will have access to a consistent level of facilities and educational opportunities already enjoyed by all students of the district including Newbury and Wilmot who already have to transport their students to Bradford and New London (respectively). At our last Board meeting, members voted to direct the Superintendent to conduct a feasibility study on keeping Sutton Central School open. In these challenging financial times, we have a responsibility to make sure that every expense is justified and contributing to the quality of educations of our students.

*continued on page 14*

## 10 QUESTIONS

by Phyllis Wilcox

*This month we interviewed Leslie and Dick Marquis, owners and operators of "The Rosewood Country Inn." The year was 1991 and Leslie and Dick were ready to forge ahead with plans to operate a Bed and Breakfast. They searched and finally located the old "Pleasant View Inn." They came from a background in the medical field and felt the time was right to find a slower paced life and a country atmosphere to raise their children. Dick was the laboratory manager at Fogarty Memorial Hospital and Leslie was in charge of research and development for chemistry instrumentation at Roger Williams Medical Center in Providence, Rhode Island. This interview was mostly with Leslie since Dick had other plans but he was around and in agreement with our conversation.*

**Q. The Rosewood has been open since 1991. Why did you select Bradford for your adventure into the demanding life of the Bed and Breakfast (B and B)?**

It kind of selected us. It was a bankrupt property. The fact that they wanted to get rid of it and made us an offer we couldn't refuse. We looked at other places. We had looked at Cape Cod and Jackson Hole, New Hampshire. The bank made it so easy; they threw in two years of taxes and no closing costs. That was in July, 1991. It was difficult to say no.

**Q. How did a background in medicine prepare you for your new chosen career?**

It really doesn't but I'm the oldest of seven children. I was 24 years old and had little brothers and sisters. It kind of put me into the "B

*continued on page 8*

## The Bradford Bridge



P.O. Box 463  
Bradford, NH 03221  
Ph.: 603-938-2692  
contact.us@bradfordbridge.com

### VOLUNTEER STAFF

Beth Rodd, Marcia Keller, Editors,  
Maureen O'Keefe, Treasurer, Ad Rep  
Marion Hall, Subscriptions & Distribution  
Dick & Marcia Keller, Distribution  
Andrea & Phil LaMoreaux, Distribution  
Carey Rodd, Sandy Richard, Layout

### ADVISORY BOARD

Harriett Douglass, Marion Hall, Mary Keegan-  
Dayton, Marcia Keller, Beth Rodd, Audrey V.  
Sylvester, Phyllis Wilcox  
Printed by RC Brayshaw & Co., Inc.

### Subscription Information

To receive The Bridge by mail, please send a  
\$20 check to cover mailing costs to the above  
address.

### Advertising

The Bradford Bridge is a free community news-  
paper supported by advertisers. To place an ad,  
call Maureen O'Keefe at 938-2941. Ad deadline  
is the 15th of the month.

### Submissions

The Bradford Bridge is written by neighbors, for  
neighbors. Anyone is welcome to submit articles  
and/or photographs of interest to the community.  
We reserve the right to edit submissions.

### Selectmen's Office Hours 938-5900

Mon - Thurs: 7:30 am - 5:00 pm  
Friday: 7:30 am - noon  
Selectmen meet the 1st and 3rd  
Tuesday of each month from  
5:00 pm - 7:30 PM  
Special Meetings will be posted  
24 hours in advance

Town Clerk/ Tax Collector  
Office Hours  
938-2288

Monday: noon-7:00 pm  
Tuesday: 7:00 am-11:30 am  
12:30 pm-5:00 pm  
Friday: 8:00 am-11:30 am and  
12:30 pm-5:00 pm

Circuit Rider  
Wednesday

call 938-2253 for appointment

**Note New Selectmen's Hours**

## Letter from the Editor

There is a sparrow's nest under construction in the eaves of our garage and the tiny mother flaps furiously when anyone gets too close to her tiny family nest. Some crocuses peek up shyly and a blue heron swooped over Lake Todd a few days ago. Today saw a sprinkling of snow, a last ditch tease before spring bursts into action. Some of our neighbors are returning from southern winter climes and neighbors gather around town for some catch-up conversation. It's been a long, cold winter. Welcome home, neighbors. We are in spring/summer mode, planning for events at the Bradford Meeting House, an Easter hunt, fourth of July festivities, the Farmer's Market and picnics at area parks and beaches.

Since we are headed towards summer fun, please consider hosting a youngster from New York City through the Fresh Air Fund. This program brings over 10,000 inner city kids for a two week vacation in towns from Canada to Virginia. First time visitors are between the ages of six and twelve years of age. This program provides the opportunity for lower income kids to escape from the city heat and enjoy the amazing luxury of running barefoot across the lawn, riding bikes, swimming, climbing mountains and experiencing the joys of summer, activities that our children take for granted. Check out the pamphlets in the post office and around town and call me if you'd like to know more about this program. It's been an enormously positive and life changing experience for our family. It will be for you as well.

Beth Rodd, May Editor  
938-2692  
bethrodd@tds.net

### Residents Of Bradford

Supervisors of the Checklist will be in session on Tuesday, June 7, 2011 at 6-7 pm at the Bradford Town Hall. This will be for the purpose to make voter corrections and update the checklist. If you are coming in to register, please bring proof of residency and age.

Supervisors of the Checklist  
Judith Marshall Ruth Marden Jackie Welsh



Expert Computer Repairs  
Memory Upgrades  
Broadband Wireless Internet Access

101 E Main Street, Bradford

[www.iamnow.net](http://www.iamnow.net)

938-2127

## Area Events

## Newbury

The third program in the We Remember Newbury series sponsored by the Newbury Historical Society will be held on Sunday, May 1 at 2 p.m. in the Newbury town office meeting room.

Discussion will include the old Indian trails which laid the foundation for Province Road, vital to the settlement of the territory then known as Fishersfield. We will also look at how modern highway systems, including Route 103, reshaped the town. Finally, we will talk about how the local Concord & Claremont railroad impacted daily life.

Guest speakers will include Frank Perrotta, local historian and author Jack Noon, and Dane Malcolm, sharing his enthusiasm for the era of the trains. Attendees will be urged to share their own insights and memories of how these events impacted their (or their family's) lives.

The We Remember Newbury series is designed to capture the character and events of Newbury's past and record these accounts for the Historical Society's archives.

## New London

**Monitoring Protected Properties Training Workshop:** Help protect land by training to be one of our over 100 land steward monitors. We continue to be successful adding new protected properties, which means that we need additional easement monitors. This is a wonderful opportunity to be in the woods making a concrete contribution to saving our rural landscape. There will be one hour of classroom work and then you'll be outside for the remainder of the workshop. Wear hiking boots, and be prepared for bugs. We will be meeting at the Ausbon Sargent office at 71 Pleasant Street, New London. Call the Ausbon Sargent office to register - Sue Andrews at 526-6555 or email [aslptsea@tds.net](mailto:aslptsea@tds.net) **Wednesday, June 8, 2-6 pm**

## Warner

The Warner Head Start program is now taking applications for the 2011-2012 school year. Children need to be 3 or 4 years old by September 30, 2011. The program is free to income eligible families who live within the towns of Warner, Bradford, Sutton, Newbury, Springfield, New London, Contoocook, Webster, Henniker and Wilmot. Please call 456-2208 for an application or 225-3295 after June.

# WALCO MECHANICAL CO.

REFRIGERATION, HEATING,  
AIR CONDITIONING,  
ELECTRICAL CONTRACTORS  
COMMERCIAL • INDUSTRIAL • RESIDENTIAL  
SERVICE • SALES • INSTALLATION  
MAINTENANCE PROGRAMS  
SYSTEM EVALUATIONS

## 938-2926

*Serving Bradford  
with a community bank tradition*

Full-Service Banking • 24-Hour ATM  
Drive-Up • Free Online Banking and Billpay



LAKE  
SUNAPEE  
BANK fsb

*the advantage of leadership*

28 offices including Main Street, Bradford  
938-2277 • [www.lakesunbank.com](http://www.lakesunbank.com)

Equal Housing Lender • Deposits Insured by the FDIC

**Sew There!**  
Oilcloth Designs & More...

**Zip Your Lip...  
...Stick**



**and your other  
cosmetics, too!**

**Sew There!**

Faye Graziano  
15 Massasecum Ave.

**Bradford, NH**

Conveniently located off Rte 114.

**(603) 938-5700**

[SewThere@tds.net](mailto:SewThere@tds.net)

**HOURS:**

**Tue-Fri 9-5, Sat 9-2**

We may no longer be called Cobble Pond but  
OUR FABULOUS INDIAN FOOD is still here! TAKE OUT  
ON WEDNESDAY AND FRIDAY

## Bradford Market

Groceries - Indian Spices & Indian and Eat Dishes - ATM  
- Beer & Wine Lottery Tickets - Gifts - Sodas - Snacks  
- Copy Machine - Coffee - Sandwiches - Auto Supplies -  
Toys - Magazines & Newspapers - Video Rentals

OPEN SEVEN DAYS - 6 am- 10 pm

Route 103 938-2662 Bradford, N.H.



## Bradford Bridge May 2011



**Bradford, NH** - Westerly exposure and VIEWS of the Sunapee Range. Foundation for house 26'X32' and garage 24'X24' already in, electric at site, 3BR state approved septic design, drilled well 250 ft deep, **2 acres** cleared, driveway in. Ready to build the home **\$85,000**



**Bradford, NH** -VIEWS, open land, fields and lawn, apple trees, sandy soils, 50'X28' garage, **24 acres** level to rolling terrain, more land also available. Gambrel log sided 3 BR home w/farmers porch. Large family room with wet bar. **\$275,000**



**BRADFORD** - Historic 'Presbury Farm' more well known as "Battles Farm". Picturesque setting, 148 acres, with about 50 acres in field, trout stream, long road frontage, VIEWS, 4000 sq ft farmhouse, huge 73' X41' barn. Working farm. Purchase prior to Conservation Easement in place and receive up to \$300,000 credit. **\$795,000**

**ELLIOT HANSEN ASSOCIATES**  
A Real Estate Company  
**603-763-9999**

[www.elliiothansen.com](http://www.elliiothansen.com)  
269 Tracy Road, New London, NH 03257  
**To see these fine properties and all others in Bradford, click on:**  
[www.bradfordnhrealestate.com](http://www.bradfordnhrealestate.com)

Sarah W. Chapin  
Registered Pharmacist



• PO Box 718 • Henniker, NH 03242  
Phone (603) 428-3456 Fax (603) 428-7793  
Email: [HennikerRx@aol.com](mailto:HennikerRx@aol.com)

## Kearsarge Area Preschool News

by Karen Lynn Hambleton

Despite the spring snowfall, the Easter celebration at Brown Memorial Library was a huge success. The Easter Bunny met many of his friends and posed for photos, the Easter Egg Hunt delighted those of all ages and there were a wide variety of yummys to choose from at KAP's Bake Sale. Many thanks to all the volunteers whose hard work made this event so much fun!

Preschoolers discussed letters S, T, U and celebrated Earth Day in April. The class explored the solar system learning about planets, moons and orbits through non-fiction books. Through the use of spinning tops, children explored the concept of planet rotation. After exploring the solar



*Gretchen and her MaMen (a learning tool that teaches shapes and formation of letters).*

system, preschoolers traveled the earth "visiting" five different continents. They visited South America, Africa, Europe, Asia and Australia. On each visit, the class explored the foods, music, cultures, games and languages found on the continent. The celebration of Earth Day and the first signs of spring gave preschoolers a number of learning opportunities. The class began composting their organic food waste outdoors and planted seeds in the classroom. Taking advantage of nicer weather, the children took several nature walks searching for signs of animals, picking up trash and exploring the wonder of nature as only they can. The addition of three hermit crabs to the classroom also provided much excitement. Unicorns, dragons and other imaginary animals were the topic of conversation at the end of the month. Reading fantasy stories, the class discussed the difference between real and imaginary creatures. Children also wrote and illustrated their own

fantasy stories.

The class is nearing the end of the alphabet and will explore V, W, X and Y in May. Volcanoes will provide the platform for a discussion of geology and the layers of the earth. Children will investigate volcanic rocks and build their own clay volcanoes. The highlight of the unit will undoubtedly be the eruption of a baking soda and vinegar volcano. For Mother's Day, preschoolers will write letters, and make cards, flowers and other gifts for their mothers. The class will talk about the parents, stepparents and guardians who love them. Weather will be a topic of study this month. Preschoolers will discuss the many different kinds of weather and the cycle of water. They also will learn how water affects different climates. Children will sing weather songs and through movement

will demonstrate different forms of weather. X is for X-ray and what better way is there to study the skeleton and human body. Children will learn about their bodies and the importance of good health. The class will discuss the different things they can do to take care of their bodies – exercise, eat their "healthies," visit the doctor, etc. Next, children will turn their focus outward and discuss "you." This unit will focus on their peers. The class will learn about compliments and how saying something nice makes others feel good. The children will describe one another and then guess which child being described. Preschoolers will also partner with one another to work on art, writing and reading projects as a team.

*Applications for our 2011-2012 school year are now being accepted! As always, we welcome new students at any time during the year. For information on our programs, please call 938-6228.*

### Bradford Neighbors Teach and Study Abroad

For many students, the Study Abroad experience is key to their personal growth and professional development. UNH student Padraic Dayton, son of Mary Keegan-Dayton & Bliss Dayton, of Bradford, knows this all too well. He has been studying at the Centro de Lenguas Modernas of the University of Granada, in Granada, Spain since early January of this year. Dayton is a Junior majoring in Environmental and Natural Resource Economics, but has quite a mastery of Spanish, a valuable asset in today's global job market.

Since January, Dayton has been one of 20 UNH students enjoying the Spanish lifestyle: living with a host family, participating in local cultural and sporting events. Several trips are

included: to Madrid, Segovia, Toledo, Valencia, Barcelona and the Basque Country. Students also travel on their own to nearby countries like France, Italy and Ireland. Says Dayton, "... this has been the experience of a lifetime."

This year, the UNH Resident Director in Granada is another Bradford resident, Sarah Hirsch. She is a Spanish Lecturer at UNH, and is thrilled to have the opportunity to direct the Study Abroad program for the Spring semester. She and her husband, Geoffrey Hirsch, are both longtime educators but are known more around Bradford for their small, seasonal antiques shop, Old Road Antiques, which is run out of their home. The shop is currently shuttered until the couple returns in late May, when it will reopen for its 4th season.



Bradford residents Padraic Dayton (center) and Sarah & Geoffrey Hirsch enjoy a beautiful day in Toledo, Spain in this photo dated from February of 2011. (photo by Joshua Hunt, UNH Class of 2012)

Bradford Barter



Bradford Barter is looking for young, energetic people to help with chores, small tasks, etc. High school students: this is a great way to fulfill your community service requirement. If you're under 18 years of age, you must be accompanied by a parent or legal guardian. For more information, please come and join us at our next meeting on May 14th at BACC at 10:00 AM.

Gift Certificates available

COVERED BRIDGE  
THE FRAME SHOP & GALLERY

Open Tues.- Sat.  
10am - 5 pm

We're so much more than a frame shop...  
come in and see what's new.

Framing - Art - Prints - Pottery - Antiques  
Furniture making and repair

916 Main Street, Fountain Sq., Contoocook • 746-4996  
coveredbridgegallery@conknet.com

### Bradford Bridge Advertising Rates

Ads run \$8 per column inch, e.g an ad one inch high and one column wide will cost \$8 per month; an ad 2 inches high and 2 columns wide will run \$32. Ads run for a year are discounted. Classified ads for items less than \$250 in value are free.

### Hugo's Electric, Inc.

Licensed & Insured  
RESIDENTIAL • COMMERCIAL  
938-5573  
3191 State Rte 114, Bradford

938 - 2600

## Bradford Pizza Chef

Delicious Pizza & Calzones

.....We Serve.....

From 10am - 1pm  
1 Medium Coffee  
or  
1 Small Fountain Drink  
**Free!**  
With purchase of any food item

Lunch Specials      Dinners  
Pastas  
Ice Cream      Salads  
Beer & Wine      **And more!**

Order In  
To Go  
or  
Call Ahead

Located at the corner of Route 103 and Main Street ~ Bradford, NH

## Letters to the Editor

Response to Greg Johnson's inquiry – in the April edition of Letters to the Editor:

How do gastropods continue their race?

Well, they don't quite conclude face to face,  
These hermaphrodites depend  
On cupid arrows they send...  
Oh, sorry... I've run out of space!

J. A. Eldridge



\*\*\*

To the Editor:

As the snow melts this spring one starts to notice all the litter and trash along our beautiful roads. One way we can all help to keep Bradford beautiful is to 'adopt' a road or a section of a road and patrol occasionally for litter. It takes less time than you think!

Our transfer station generously supplies blue trash bags for this purpose, and you can drop off full bags at the transfer station where Lois Kilnapp graciously gives her time to separate out recyclables.

I know a number of people are patrolling for litter currently. And if just a few more join in, we can have a large impact on the cleanliness of our town. Please give it a try. Thanks,

Seth Benowitz  
Bradford, NH 03221

\*\*\*

To The Editor

Has anyone noticed the deterioration of our roads over the past three years? I have lived in New Hampshire most of my life and never seen so much salt used. Not only does it make the roads heave more due to seepage into cracks

but it affects our water quality and costs us more money. I am sure there are alternatives like obeying the speed limit and paying attention to weather/road conditions. Let's reverse salt policy to what existed before three years ago. Things were fine the way they were.

John Belanger  
274 West Road

\*\*\*

To The Editor:

I would like to tell you how surprised I was, when talking to a fellow resident of Bradford, to hear her say that she had never been in to the Community Center although it was 13 years ago that the Town Meeting voted to save the old school for use as a Community Center.

I challenged her to come in and see what her tax money has done to that building to make it an attractive place to be connected to.

Upstairs half of the space is occupied by a pre-school and after school program for children. The other half sports a carpeted meeting room with piano, facilities for showing movies, space for meals or socializing. It has a well-equipped kitchen examined regularly for adherence to codes. Don't forget the immaculate bathroom facilities.

Downstairs are two administrative offices. One is for the Community Center, the other for the Senior Center (Community Action Program). Empty at times, the community room is not assigned to anyone special – It is for the use of groups for education, health programs and group projects. The other room downstairs is fitted to be a youth room and it has a ping pong/pool table, TV, computers, board games and refrigerator.

We, the town of Bradford, voted to have the Community Center, but it seems that not many in the town use it. The seniors have programs under the direction of CAP and the very young are learning their ABC's under the KAP program. But there is still room for others to have programs. Check in at the Director's office to see what times are available. Unfortunately we cannot all meet at the same time.

The Director's office may be reached by phone: 938-6228

Edythe Craig

*Editor's Note: Several other groups use the community center: art lessons, writing group, Parks & Rec, Bradford Improvement Association, 4H, etc. The town is in the process of collecting data on use, much of which is unrecognized.*



# Ayer & Goss

**FUELS**

**24 HOUR SELF SERVICE  
GASOLINE & DIESEL PUMPS**

*Serving the area's heating needs for more than 60 years*

FUEL OILS & LP GAS / COMPLETE HEATING SERVICE

**938-5335**

Route 114, Bradford • Hall Ave., Henniker . . . 428-3333

## Girlscouts Reach Out to Needy

Members of the Bradford-Newbury-Sutton Women's Club and Stitches of the Heart worked with members of the Bradford/Newbury Junior Girl Scout Troop #12579 to make Magic Pillowcases. The pillowcases are designed to be easy to sew, but more important, to provide comfort to people in need. The Women's Club and Stitches from the Heart have made numerous pillowcases that have been given to people locally and donated to Quilted Threads in Henniker to support their participation in the Million Pillowcase Challenge. The pillowcases are distributed to numerous state



wide facilities such as shelters and the VA Hospital. According to volunteer Susan Wick, "working with the girls was also the highlight of our year. It was an honor to be invited to host a Magic Pillowcase Workshop for Girl Scout Troop 12579. I'm not sure who was more excited, the girls or the Bradford-Newbury-

Sutton Women's Club volunteers. Throughout the day we were impressed by their manners and their eagerness to develop sewing skills that encourages community involvement by creating cheerful pillowcases to brighten the day of individuals in need of comfort. Your girls are tomorrow's future." Volunteers Mary Derry, Betty Parys, Caroline Verity and Susan Wick worked with the Girl Scouts. The pillowcase project was the culmination of the scouts' work on their sewing badge. New sewer, Lydia Pinard said that the volunteers "were really nice and helpful; I kept getting rats' nests in my work and they helped me fix them." For most girls, these pillowcases were

the first finished pieces that they had sewn. Each girl sewed two cases and gave one to a person in their lives who needed comfort and the other has been donated to CHaD. CHaD is also the organization the girls chose to collect cookie donations for their Gifts of Caring as part of this year's cookie drive.

## STONERIDGE FARM

### CSA - Community Supported Agriculture 2011 - OUR 9th SEASON

Do you enjoy having a steady supply of fresh organic vegetables, flowers herbs, and fruits each week? Then consider joining our CSA.

Applications and further information available at

[WWW.STONERIDGEORGANICS.COM](http://WWW.STONERIDGEORGANICS.COM)

Shares are limited so inquire early. Questions give us a call.

330 Cressy Road, Bradford NH 938-6186

**Tall Pines REALTY**



Bradford \$219,900  
HEATED BARN



Sutton \$189,900  
FURNISHED W/BEACH

938-2366



Located at the Covered Bridge  
Ann C. Hallahan, Broker/Owner  
[www.tallpinesnh.com](http://www.tallpinesnh.com)

*The Bradford Bridge welcomes letters to the editor. Word limit is 250 and all letters are subject to editing for style, grammar and taste. Anonymous letters will not be printed. Please include name and daytime telephone number. Space limitations do not allow for back & forth letters from the same writers. Send letters to Contact.us@bradfordbridge.com or P.O. Box 463, Bradford, N.H. 03221*

EPA Certified for Lead Paint

**ALBERT L LEBLANC**  
938-2018

INTERIOR & EXTERIOR PAINTING  
REMODELING • CARPENTRY • DRYWALL  
REFINISHING • KITCHEN & BATH

"fully insured, free quotes"

Bradford Bridge May 2011

10 Questions - cont'd from p. 1 and B" for family in the beginning.

**Q. Remembering back, what was your initial reaction to the old "Pleasant View Inn?" Did you have serious doubts about the condition it was in and whether or not you could make it the place that suited you?**

It was in deplorable condition. It was structurally sound and we could envision how it could look. We had resources from the sale of our home in Rhode Island. It needed a new roof, a new septic system; new plumbing and 126 windows were replaced. Eliot Hansen was the realtor and looking back I cannot believe that we took the plunge and bought it. In the 1870's it was a farmhouse with 102 acres, cottages across the road and a tent site out back accommodated 85 guests. The Messer family owned it until 1971. They sold it to brothers from California. They were having problems and we came along. I guess we were younger and ready for the challenge, and it was a challenge.

**Q. You mentioned a background in research and development. What did your work entail?**

The training was on site. I researched the type of instruments that the hospital should purchase and Dick oversaw all the technologists that ran the department. We met at the hospital which is now "Landmark Hospital." That background helped us when we bought the old farmhouse.

**Q. You said that you were the eldest of seven children and raised in a strict Catholic family. You were 24 years old when your father passed away were you automatically put in charge of the younger siblings?**

To a certain extent that's what happened. Dad owned a television repair business and my mom took

it over. I still had two sisters and brothers at home and they were still in school. I took in the family. We had our own two daughters. When we moved here my younger brother came along to help out. I continued working for about three months and commuted weekends.



**Q. Twenty winters have passed since you moved here and began the inn operation. Has the reality of life as the owners of a country inn been as you expected it to be?**

Our first contractor took us to the cleaners for about \$100,000 and Dick had to go back to work. He worked at Hitchcock Clinic in Concord. I oversaw the renovation and startup of the "Rosewood." The economy in the past few years has been a "flip" so people don't go away as often or stay as long. They watch the weather and wait to make reservations.

**Q. Where do your guests arrive from? What types of offerings bring them to your door?**

They come from New England, New York and New Jersey. As the gas prices rise our area becomes smaller. Now, they seem to come from Rhode Island, Connecticut, and New Hampshire. We have people from "The Craftsmen's Fair," bridal and baby showers,

church groups, couples who married here and still come for anniversaries.

**Q. What were the most difficult problems that you had to resolve over the years?**

In the beginning it was the problem with the contractor. We had sunk all our money into the business.

**Q. Are you a people person? Would you say that it was important in this type of business?**

You have to make your guests feel welcome. We have eleven bedrooms. We have an assistant inn keeper /chamber maid. Dick and I share responsibilities. Dick mows and I do the garden work.

He does the books and I do the cooking. Dick waits tables

**Q. What are your future plans? Do you have another plan or is it retirement after this?**

We would both like to retire within the next few years. I'd like to spend winters on the east coast of Florida. I wouldn't change anything that we have done. We've worked hard.

**Q. One final question where did you get the idea for the room names which are names of famous bygone movie stars?**

Mary Pickford, Gloria Swanson, Douglas Fairbanks and the Gish sisters all stayed here in the past. Their names are in the guest book when it was the "Pleasant View Inn" and the "Pleasant View Farm."



## Selectman's Highlights

**BACC:** The Board signed letters to the Kearsarge Area Preschool terminating its lease on June 30, 2012 and a letter to The Children's Center for Creative Learning to delay the beginning of their lease until July 1, 2012.

Robert Manchester requested an update from the Selectmen on the KAP lease negotiations begun last year, as well as other Community Center related topics. At the Board's request he had done considerable research on the overall operation of the Center last year and did not believe any changes had been made. The Selectmen explained the reorganization and revitalization planned.

Mr. Manchester also had questions regarding regionalization for safety services. He recommended the Board of Selectmen try at least to deal with coverage on a per shift basis for police and rescue.

**July 4th Celebration:** Marlene Freyler presented a fireworks proposal from ATLAS for eighty five hundred (\$8500.00) dollars. She also presented the idea of a Bavarian Band to play in the parade and in the park. Discussion focused on the policy in place of "No alcohol on Town Property." There was also discussion regarding parking in the back of the former Marshall property during the 4th of July celebration. This is currently closed off, but would keep cars off Main Street. Road Agent Jeff Remillard advised he felt it could be arranged.

**Bement Bridge:** Selectmen heard presentations regarding possible approaches that could be used to repair the bridge – one from The Truax Timberwright Woodworks, a second based on the State report with comments from Senior maintenance engineer Denny Hisler, and another report from Tim Andrews. Harry Wright commented that it is important to get it jacked back straight quickly, get the weight of the old shingles

off and re-roof with the standing seam roof. Then keep it in the budgeting process. By re-opening it, it would keep on-going interest in the bridge. Costs and details do need to be obtained for the project.

**Pizza Chef:** John Goildassas stated there is a lot of water coming out of his basement, going into the parking lot and bypassing the drain. Mr. Goildassas advised the problems arose only after the new drain was put in by the highway department in 1999. The Selectmen will look at it during the next rain storm and make a decision.

**Highway Department:** Selectmen approved the purchase order to Sanel for the hydraulic hose and fittings in the amount of \$4300.00.

**Road Agent:** Jeff Remillard brought up rental of his equipment and said it would be less expensive than to bid out individual jobs. Selectman Wheeler suggested finding out exactly what jobs are required to be done and for what period of time equipment would be needed. Road Agent Remillard said he would include moving his equipment within the rental price of fifteen thousand (\$15,000) for six months.

Selectman Wright suggested that the Road Agent put some jobs and lengths of time together for the Selectmen to compare with cost to contract out the jobs.

It was announced that the backhoe has been delivered.

The Road Agent advised that Fire Chief Goldberg wants the fire pond dredged and some crushing and screening could be done as well as some ditching. The town will take the responsibility for dredging of the Fire Pond at an estimated cost of \$7,500 for the cost of the dredging, which will be transferred to the Highway Dept. budget.

**Personnel Manual:** The new manual, prepared with the help of the Local Government Center has been received. An early morning meeting will be arranged to review the Personnel Manual with employees.

**Sidewalks:** After correction of a misunderstanding, Selectmen signed the contract. A Planning Meeting will be held in May.

### Non-Public Sessions:

Decision made to proceed with process for tax deed redemption with land owner.

First Personnel matter resulted in no decision.

Second personnel matter concerned the highway department vacancy. Job applications were reviewed for the highway department. The Board approved hiring Philip Redmond.

Third personnel matter deferred to future meeting at which no personnel decisions were made.

*Minutes of all Selectmen's meetings are on file at the Town Hall and online at [bradfordnh.org](http://bradfordnh.org).*



**Mother's Day Chic!**

Mom will swoon for these gorgeous, stylish and useful items!

Ladies Round Purse Mirror  
Ladies Three Compartment Pill Box



*Both are silver plated & include pouch.*

**Opening Day is April 30 • 10 to 5**

104 Route 103 • Newbury, NH  
Across from Lake Todd  
**603-938-5191**

## MAY CALENDAR

**Mon. May 2nd**

8:45 AM - MVSC - Fitness  
 10:00 AM - Ceramics Class  
 1:00 PM - Bridge Group  
 4:00 PM - Watercolor class  
 call Becky - 456-3523

**Tues. May 3rd**

10:00 AM - Stitches from the Heart  
 12:00 Noon - Senior Dining  
 1 PM - Watercolor class  
 call Becky - 456-3523

6:00 PM - Yoga Class  
 call Fran at 456-3099

**Wed. May 4th**

6:00 PM - Special Party  
 5:00 PM - Friends of BML Annual Meeting, BML

**Thurs. May 5th**

12 Noon - Senior Dining  
 Fri. May 6th  
 8:45 AM - MVSC - Fitness  
 11:30 AM - First Friday Brunch  
 -raffle, music, door prizes.  
 Call for reservations.  
 7:00 PM - Book-to-Movie, *Letters to Juliet*, BML

**Mon. May 9th**

8:45 AM - MVSC - Fitness  
 10:00 AM - Ceramics Class  
 1:00 PM - Bridge Group  
 7:00 PM - Rural Heritage

**Tues. May 10th**

10:00 AM - Stitches from the Heart  
 12 Noon - Senior Dining  
 1 PM - Watercolor class  
 4:30 PM - BACC -Committee Mtg.  
 6:00 PM - Yoga Class

**Wed. May 11th**

3:15 PM - Baton Twirling  
 call Joan Lucas - 938-2224  
 7:00 PM - Library Book Group,  
*Tracks* by Louise Erdrich, BML

**Thurs. May 12th**

12 Noon - Senior Dining

**Fri. May 13th**

8:45 AM - MVSC - Fitness  
 12:00 Noon - Café Bienvenue

**Sat. May 14th**

9:00 AM - Writing Group  
 9:00 AM - Bradford Barter  
 10:00 AM - 2:00 PM Grand Re-opening - Historical Society, Old Post Office  
 7:00 PM - Coffeehouse Concert - Center Meetinghouse

**Sun. May 15th**

11:30 AM - Reception, New Art Show, BML

2:00 PM - Special Party

**Mon. May 16th**

8:45 AM - MVSC - Fitness  
 10:00 AM - Ceramics Class  
 1:00 PM - Bridge Group  
 4:00 PM - Watercolor class  
 call Becky - 456-3523

5:30 PM - 4 - H

**Tues. May 17th**

10:00 AM - Stitches from the Heart  
 11:00 Merrimack County Area Com. on Aging - Reception at Pleasant View Concord (reserve by May 11th)

12 Noon - Senior Dining  
 1:00 PM - Watercolor class  
 call Becky - 456-3523

6:00 PM - Yoga Class

**Wed. May 18th**

3:15 PM - Baton Twirling  
 call Joan Lucas - 938-2224

**Thurs. May 19th**

10:30 AM - 12 Noon Blood Pressure Clinic  
 by LSVNA

12 Noon - Senior Dining - humorist David Shrikes  
 1:00-3:00 PM Foot Care Clinic  
 LSVNA Call 526-4077 for appt.

**Fri. May 20th**

8:45 AM - MVSC - Fitness  
 9:30-11:30 AM Foot Care Clinic  
 by LSVNA at North Ridge Apartments

10:00 Movie: SECRETARIAT  
 - 123 min.

12 Noonish - Café

7:00 PM - International Movie (Japan), BML

**Sat. May 21st**

10:00 AM - Bradford Improvement Association

**Mon. May 23rd**

8:45 AM - MVSC - Fitness  
 10:00 AM - Ceramics Class  
 1:00 - Bridge Group  
 4:00 - Watercolor class  
 call Becky - 456-3523

**Tues. May 24th**

9:30-11:30 LSVNA Foot Care at Warner Pharmacy  
 10:00 AM - Stitches from the Heart  
 12 Noon - Senior Dining  
 1 PM - Watercolor class  
 call Becky - 456-3523  
 6:00 PM - Yoga Class

**Wed. May 25th**

8:30 AM - Trip to Wright Museum  
 Wolfboro Inn for lunch.

10:30 AM - 12 Noon Blood Pressure Clinic at Warner Senior Room - LSVNA

3:15 PM - Baton Twirling  
 call Joan Lucas - 938-2224

7:30 PM - Annual Concert - Historical Society at Baptist Church  
 KRSD musicians

**Thurs. May 26th**

12 Noon - Senior Dining  
 All Day- Conference on Aging  
 Manchester - register by May 6th

**Fri. May 27th**

12 noon - Café Bienvenue

**Sat. May 28th**

9:00 AM - Writing Group  
 9:00 AM - 2:00 PM - Book Sale, BML

**Mon. May 30th** - Memorial Day  
 Mt. View and MOW Closed

Library Closed

1:00 PM - Bridge Group

**Tues. May 31st**

10:00 AM - Stitches from the Heart  
 12 Noon - Senior Dining  
 1 PM - Watercolor class  
 call Becky - 456-3523  
 6:00 PM - Yoga Class

All events take place at the Bradford Area Community Center (938-6228) or the Mountain View Senior Center (938-2104) unless otherwise noted. Please call to confirm dates and times in case there has been a change to the submitted information.

**Abbreviation Key**

BBC-Bradford Baptist Church  
 BML-Brown Memorial Library  
 FGC-Fish & Game Clubhouse  
 Gillingham Drive  
 KAP-Kearsarge Area Preschool  
 KRES-Bradford Elemen. School  
 MVSC-Mountain View Senior Ctr  
 TH-Bradford Town Hall  
 ZBA-Zoning Board of Adjust.

The Bradford Bog People include: Beth Eldridge - fiddle, guitar, vocals; Woody Pringle - banjo, fiddle, mandolin; and Tii McLane- banjo, fiddle, guitar, vocals, and clogging. The Bradford Bog People perform throughout New England and their recent CD "Fully Peated" had been aired on radio stations from NH to WV and TN.

Tickets are \$10 and available at the door. For more info contact Laurie Buchar 983-5372.

<http://www.bradfordbogpeople.com>


**Bradford Bog People Benefit Concert**  
**Upkeep of the Bradford Center Meetinghouse**

Please join us for a lively evening of Appalachian music and fun.



**Saturday, May 14th**  
**7 to 8:30 pm**

**Early American southern music featuring rhythmic banjo and fiddle, archaic tunings, beautiful harmonies, and clogging.**



Tickets are \$10 and available at the door. 938- 5372



### Ongoing Events

- Bradford Barter-2nd Saturday at 10AM at BACC/call 938-2777 for info
- Children's Storytime - Wednesdays at 10:30AM at BML
- Cemetery Commission - 2nd Thursday at 6PM/Call 938-5539 for info
- Conservation Commission - 3rd Tuesday at 7PM, Town Hall or BML
- Fish and Game Club -1st Monday 7PM at Fish and Game Club
- First Friday Bunch -11:30AM at MVSC, reservations appreciated/ call 938-2104 for info
- Historical Society - open by appointment, call 938-5372
- Library Trustees -1st Wednesday at 6:00PM @ BML
- Planning Board - 2nd and 4th Tuesday at 7PM, Town Hall
- Rural Heritage Connection - 2nd Monday, 7PM, BACC
- Selectmen's Meeting - 1st and 3rd Tuesday, 5:30PM, Town Hall
- Zoning Board - 1st Wednesday, 7:30PM, Town Hall

## ZUMBA!

Get in Shape for Spring & Summer with Zumba.! Classes are now held upstairs at beautiful Town Hall, Thursday at 5:00pm and every Saturday at 9:30am until Memorial Day. All are welcome. Fun, energizing and healthy.



New Bridge e-mail address:  
contact.us@bradfordbridge.com  
or go to the site:  
<http://www.bradfordbridge.com>

### HENNIKER VETERINARY HOSPITAL, PA

Small Animal & Equine Practice  
Alyssa J. Brust D.V.M.  
Robert A. Brust D.V.M.  
Jill R. Patronagio D.V.M.  
Freya Moscowitz, V.M.D.  
Amy C. Jones D.V.M.

24 Hour  
Emergency Service  
House Calls Available  
Henniker,  
New Hampshire  
603-428-3441






Old Fashioned Service. Modern Healthcare.

**Cindy Snay, Owner/Pharmacist**

11 East Main Street  
Warner, New Hampshire  
**603.456.3556**  
Mon.-Fri. 9am-6pm & Sat. 9am-1pm



**VNA 12th Annual Women Who Make A Difference Luncheon**

**Guest Speaker:**  
**REV. LYNNE HUBLEY**

*"The Chain Reaction of Kindness"*

**WEDNESDAY, MAY 18, 2011**  
Colby-Sawyer College  
Ware Campus Center  
11:30 a.m. – 1:30 p.m.  
\$40.00 per person

**Call 603-526-4077 to RSVP**



**Lake Sunapee Region VNA & HOSPICE**  
Your Health, Your Home, Our Care  
107 Newport Road • New London, NH 03257  
[www.lakesunapeevna.org](http://www.lakesunapeevna.org)

### Thanks

The next time you're in the Town Hall entry, look up the stairs or if you are adventurous, walk up. The hall has been scraped primed and painted by Bill Starr with set up help from Matt Gerald, both of Main Street. This job was done at NO cost to our town. Thank you Bill, for helping our Town Hall with its new look. Also thanks to Beth Rodd and Sandy Richard for donations of material and cash. Good Deeds and Volunteers do make a difference.



## Lake Sunapee Region VNA & HOSPICE

Did you know...? May 6-12 is National Nurses Week!!! National Nurses Week 2011 Nurses Trusted to Care Often describes as an art and a science, nursing is a profession that embraces dedicated people with varied interests, strengths and passions because of the many opportunities the profession offers. As nurses, we work in emergency rooms, school based clinics, and homeless shelters, just to name a few. We have many roles, from staff nurse to educator to nurse practitioner and nurse researcher – and serve all of them with passion for the profession and with a strong commitment to patient safety.

Annually, National Nurses Week begins on May 6, marked as RN Recognition Day, and ends on May 12, the birthday of Florence Nightingale, founder of nursing as a modern profession. During this week, registered nurses all over the country will be honored.

Traditionally, National Nurses Week is devoted to highlighting the diverse ways in which registered nurses, the largest healthcare profession, are working to improve healthcare. From bedside nursing in hospitals and long-term care facilities to the halls of research institutions, state legislatures, and Congress, the depth and breadth of the nursing profession is meeting the expanding healthcare needs of American society.

~Home Care Matters ~

[www.lakesunapeevna.org](http://www.lakesunapeevna.org)  
107 Newport Road  
New London, NH 03257  
(603) 526-4077

# Mother's Day

*Remember May 8th!*

## Belanger Roofing

Painting, Roof Shoveling  
Roof and Home Repairs  
Serving Bradford for 20+ Years  
Call John, 938-2858  
EPA Lead Certified



**1-888-CALL-TDS**

[www.tdstelecom.com](http://www.tdstelecom.com)

PHONE • BROADBAND • DIGITAL TV

53241/4-07/3843



**YOUR COMMUNITY BOOKSTORE AND GALLERY**  
Named "Editor's Pick" Bookstore by YANKEE Magazine

**Great Books & Toys • Games for All Ages**  
16 East Main Street  
[info@mainstreetbookends.com](mailto:info@mainstreetbookends.com)

**OPEN Tues - Sunday 9 am to 6 pm • 456-2700**  
*Something Wonderful is Happening in Warner*

## Portraits of Main Street

The Bradford Art Group opens a new exhibit on May 7, Portraits of Main Street Bradford, by local young art students of instructor Patricia Sweet-MacDonald. The watercolors are paintings of buildings and their surroundings along Main Street Bradford. Patricia said that the students exercised their own artistic license to depict how they see Main Street in the spring-time.

Exhibiting artists are: Matthew Hubley, Taryn Hubley, Sydney Starr, Shannon Higgins, Jenna Cook, Bo Underhill, Brad Underhill, Brie VonBeren, Isabella VonBeren, Izzy Steiner, and Alison MacDonald.

that there are no limits to what can be learned at an early age. She shares her knowledge with young, budding artists so that they may develop their own style and be equipped with the basic principles of painting so they may create their own masterpieces.

An open-to-the-public reception for young artists will be held on Sunday, May 15 from 11:30 am to 1 pm in the handicapped accessible Brown Memorial Library, 78 West Main Street, Bradford. The exhibit runs thru May 18, 2011. Library hours are: M. 10 – 8; Wed. 10 – 7; Sat. 10 – 3; Sun. 11 – 3.

## Bradford Historical Society

The Historical Society just set the date for the annual concert at the Baptist Church in Bradford on Wed. May 25th at 7:30 pm. This is a delightful event featuring KRHS chorus and band performers under the direction of Ernie Mills.

It highlights the unique acoustics of this historic church building as well as the inspiring musical talents of our local youth.

Free and open to all!

PORTRAITS  
OF  
MAIN STREET  
BRADFORD

Library Hours:  
Monday 10AM - 8PM  
Wednesday 10AM - 7PM  
Saturday 10AM - 3PM  
Sunday 11AM - 3PM

**Brown Memorial Library Art Exhibit**  
Displaying portraits of Main Street painted by local young art students of instructor Patricia Sweet-MacDonald  
Exhibit runs from May 6 to May 18, 2011  
Reception Sunday, May 15 from 11:30am to 1pm  
Come meet the artists and enjoy some punch and cookies!

78 West Main Street Bradford, NH 603938-5562

Patricia Sweet-MacDonald was born and raised amongst the palms and sandy beaches of Clearwater, Florida. She could no longer resist the lure of New England and relocated her family to New Hampshire 10 years ago. At age six, she fractured her leg and found that she had a rare bone disease that limited her mobility for the next four years of childhood. It was at this time that she pursued painting and took adult classes while her peers were in elementary school.

Before she turned 10, she had learned the basic principles and fundamentals of painting that professional artists take years to learn. She had her first solo exhibit at the age nine. She is convinced

at Newbury Harbor

# Bubba's

**BAR & GRILLE**

**BUBBA Here:** Hey! Check out 5/19 on the May Line up....It's Risotto Night!! We'll make a delicious Risotto base and then you pick what to infuse it with AND you pick what to top it off with....so, how about Portabella Mushroom Risotto topped with Grilled Shrimp...OR Crabmeat Risotto topped w/ Pan Seared Scallops...you get the picture, just Make it Your Way!

Thursday Night Music is back starting on the 5th!!! May's Line up: 5/5...Italian Night.... And The Smooth Duo playing from 6pm 'til 9pm in the Lounge

5/12...oh yeah...The Shrimp Buffet...you wanted us to keep featuring this so here it is! ...and Pete Merrigan (just back from his world tour.. Newport to Grantham and back!)

5/19...Risotto Night...build your own from our special list of ingredients...PLUS..2nd Wind in the Lounge

5/26....The Shrimp Buffet....and Annie Law on the mike

**MENU SUGGESTION:**  
Homemade Mac n Cheese laced with Maine Lobster Meat  
The cheese sauce is a blend of Asiago, Yellow Cheddar and Mascarpone  
4oz Lobster Meat...\$21.95      8oz Lobster Meat....\$31.95  
12oz Lobster Meat...\$41.95 Served with Freshly Steamed Broccoli and Homemade Dinner Rolls

Bubba's Catering is available for all occasions!      603-763-3290  
976, Rt 103, Newbury, NH  
[bubbahmplt@tds.net](mailto:bubbahmplt@tds.net)      [bubbasbarandgrille.com](http://bubbasbarandgrille.com)

Bradford Bridge May 2011

*Budget - ontinued from page 1*

District administration has already prepared additional cuts should the contribution required by state law to the New Hampshire State Retirement system be reduced or eliminated. This would be an additional burden to local taxpayers equal to an additional unfunded mandate by our state government. I have to confess I am disturbed by the actions of our recently-elected legislators. Legislators have demonstrated that they are focused primarily on cutting what is arguably the leanest state budget in the nation while ignoring the revenue side. The few initiatives coming out of Concord focused on revenue include reducing cigarette and gas taxes. Studies have already shown that the volume of sales required to make up the loss in tax revenue from the cigarette tax would require an increased volume of sales that is virtually impossible. Reducing the gas tax by five cents a gallon would only result in an average household savings of approximately \$4.17 per month (figuring an average of 20mpg gallon with 20,000 miles per year). In my opinion, this money is better spent on our state roads and bridges (some of which are in horrible condition already).

If one's household income drops 30%, one can't simply decide to feed their family only 70% of the time. There is a responsibility to one's family to cut back on non-essentials, but also to look for additional sources of revenue. Our current legislators are spending too much time focusing on the negative and little effort on improving revenues to the state. In the interest of "trimming the fat", many recent initiatives will also eliminate many sources of revenue tied to state spending which will have an impact far beyond the dollars appropriated. It is important to re-invest in our communities by determining what we are willing to spend to maintain our quality of life and then communi-

cate that to our representatives.

When it comes to funding education, many studies show that the quality of education in an area has a direct correlation to property value. To defund public education unilaterally shows a disregard for not only education but local property owners that could lead to a downward spiral. Our district has worked very hard the last few years in an attempt to balance budgets while maintaining the quality of education.

Recently the district and the Town of Warner suffered through the accidental death of one of our students. Rosa Valpey was a vibrant and independent sixth grader at the Simonds School in Warner. While out riding her bike along Route 103, she was struck by a motorist and shortly after passed away. The tragedy has affected our whole community. Staff at Simonds School (with help from everyone in the district) must be commended for the gentle manner in which they supported our students through this difficult time. Our thoughts are with Rosa's family and the Town of Warner as they deal with this loss.

The District website (<http://www.kearsarge.org>) contains a calendar of meetings and all budgetary documents as well as a brochure detailing the process and updates of district/school information.

Breckwell Pellet Stoves  
"The Big E" Stove heats up to  
2,200 square feet. \$1850  
Buy it now!

**Pellet Stove Company**  
100 Bradford Road (Rt. 114)  
Henniker, N.H.

Fireplace Inserts Available  
Quality, Reliability, Affordability  
Any questions, call:  
(603) 529-WARM (9276)  
(603) 848-1325 Cell

## The Bradford Fish and Game Club

The Bradford Fish and Game Club hosts its annual **Kid's Trout Fishing Derby** on Sunday May 15, 2011 at the Bradford Firehouse Pond, junction of Main Street and Rt 103. This tournament is for children up to age 15, but the whole family is invited to come out and enjoy the morning. Doughnuts and drinks will be supplied.

Free registration begins at 7:00 AM with the fishing starting at 8:00 AM and continuing to 11:00 . Fish should be weighed in immediately after they are caught as prizes are not just for size but also the order in which the first several are brought in. Prizes and trophies to be awarded shortly after 11 AM.

Stocking of the pond will be within the week before the derby. We hope the local wildlife will leave all the trout for the kids!

### Lake Todd Village District

**Saturday, May 14, 8:30 am**  
The Lake Todd Village District will be cleaning up its section of State Route 103. Lake residents and others who care about the environment are encouraged to come and help. The group will meet at the Warrens, 69 Route 103 in Newbury.

**Saturday, May 28, 9:00 am**  
The Lake Todd Village District will hold a hearing in the Senior room of the Community Center to discuss the budget proposed for 2011. Non-resident taxpayers are invited to attend and contribute to the discussion.



## First Baptist Church News

by Lynne Hubley

**Youth Sunday:** Our Youth will be leading the entire Worship Service on Sunday, May 1 at 10:00 a.m.

**Focus Factor:** Youth who are in grades 6-12 will meet on the following Sundays from 4:00 - 5:30 p.m. in the Youth room at the church: May 1, 8, 15 and 22. They will also be planning a retreat at the church to be held some time during the month of May.

**Pot Roast Dinner:** Our church will host a Pot Roast Dinner on Saturday, May 7 at 5:30 P.M. The cost is \$8.00 for adults and \$4.00 for children 12 and under. The proceeds will support our American Baptist Missionaries in Nepal.

**Women's Retreat:** On Saturday May 14 from 9:00 a.m. - 3:00 p.m. we will have a Women's Retreat at the church on the theme: "Finding Joy in the Seasons of Life". Our speaker will be Cheryl Chambers, a Pastoral Counselor who works and lives in New York. The cost is \$10.00 and includes lunch.

**Food Pantry:** The pantry will be open on Wednesday, May 18 from 5:30 - 6:30 p.m. Food can also be obtained by calling the church office at 938-5313.

**Men's Fellowship:** The men will meet at the home of Fred Hubley on Wednesday, May 25 at 6:30 p.m. for pool, refreshments and fellowship.

**Crop Walk:** Our church will be joining the United Church of Warner on Saturday, May 28 for a Crop Walk to help raise money to fight against hunger.



## Obituaries Milton R. Brennan

Milton R. Brennan, 82, of Londonderry, died April 7, 2011, in the Villa Crest Healthcare Center, Manchester.

He was born in Aylesford, Nova Scotia, Canada, on May 27, 1928, son of the late Horace and Marjorie Brennan, and had been a resident of Londonderry since 2008. Brennan grew up in Nova Scotia and moved to Melrose, MA, when he was 5 years old.

Growing up, he worked at the family's milk business, Brennan Dairy, delivering milk in the mornings with his father before going to school. Milton met his future wife, Janet, while attending Melrose High School. They married and moved to Reading, MA, where they had their two children.

In 1986, Milton retired to Bradford after working 40-plus years for Standard Forms Inc., and then he moved to Londonderry in 2008.

He is survived by his wife, Janet (Jackson) Brennan, of Londonderry; a daughter, Meredith Joyce Dance of Londonderry; a son, Mark Wesley Brennan and his wife, Debra Kay; three grandsons, Wesley Mark, Joshua Paul and Adam Reid, all of Londonderry; four nephews and one niece. A brother, Marshall Brennan and a sister, Zaida Jackson, predeceased him.

He will be buried at the New Riverside Cemetery in Alton after a private service at a later date.

Memorial contributions may be made to the First Baptist Church, Main Street, Bradford; or to the Salem Animal Rescue League, 344 South Broadway, Salem 03079-4304; or please visit [sarlnh.org](http://sarlnh.org). To send a condolence, please visit the Peabody Funeral Homes and Crematorium [peabodyfuneralhome.com](http://peabodyfuneralhome.com).

**Bradford Dental Associates**  
79 West Main Street  
Bradford, N.H. 03221



Rolf Knudson, DMD



Caring and Affordable Dentistry  
Call 938 - 2688 for an appointment



**Garry Kalajian**

Artist

**Blacksmith**

Handforged Hardware &  
Home Accessories

267 Forest Street  
Bradford, N.H. 03221  
603.938.2602  
www.araratforge.com

**TAKE-A-BREAK**

Interior and Exterior Painting

Free Estimates  
Fully Insured

Jay Hinnendael  
456-3396

Step Up to our Upper Level  
for Wall Organizing Ideas  
"We'll Get You Hooked"

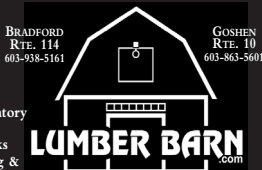


**True Value**  
START RIGHT. START HERE.™

As Always...Building Materials  
Delivered for FREE!

DID YOU KNOW?

- We have Computer Color Matching
- We Cut Keys
- We Cut Glass
- We'll Handle Your Special Orders
- We have a Full Inventory of Rough Lumber
- We fill Propane Tanks
- We have Landscaping & Gardening Materials



BRADFORD  
RTE. 114  
603-938-5161

GOSHEN  
RTE. 10  
603-863-5601



## Library Lantern

by Meg Fearnley

Thanks to everyone who worked so hard to make the Easter Egg Hunt such a fun event! A special thanks goes out to the Bradford Elementary School's fourth grade classes. They cheerfully stuffed all the Easter eggs as a community service.

The library trustees hold another book sale on Saturday, May 28 from 9am until 2pm. The trustees always strive to present the best possible sale. Please give us any suggestions you may have for improvement!

Activities this month at the library:

Book-to-Movie: Letters to Juliet, Friday, May 6 at 7pm

Library Book Group: Tracks by Louise Erdrich, Wednesday, May 11 at 7pm

New Art Show Reception, Sunday, May 15 at 11:30

International Movie from Japan, Friday, May 20 at 7pm

Book Sale, Saturday, May 28 from 9am-2pm

The library will be closed on Monday, May 30.

Some of the new books added in April:

For adults

*The Land of Painted Caves* / Jean Auel

*Live Wire* / Harlan Coben

*The Red Garden* / Alice Hoffman

*The Troubled Man* / Henning Mankell

*To a Mountain in Tibet* / Colin Thubron

For children:

\$2,000 worth of new children's books from the Children's Literacy Foundation Grant! These books will be available for circulation after the upcoming presentation at the Elementary School. Oh boy!



The Friends of Brown Memorial Library will hold its Annual Meeting on Wed. May 4, 2011 at 5 pm in the library, 78 West Main St., Bradford. President Audrey Sylvester said, "We look forward to seeing old friends and especially welcome people wanting-to-be-friends to join the meeting. We need your ideas for increasing membership, ideas for future programs, and your help in planning two special performances by Talesman Odds Bodkin, and Magician Andrew Pinard, to be held during the 2011 Summer Reading Program." Refreshments will be served. For more information, call: 938-5948.

YOUR LOCAL SOURCE PROVIDING



BUILDING ANALYSIS • ENERGY AUDITS • DESIGN/BUILD SERVICES  
RENOVATIONS, ADDITIONS AND COMPLETE HOME CONSTRUCTION

BUILD IT BETTER • BUILD IT GREEN • BUILD WITH BRUSS

PO Box 456 Bradford, NH 03221 • 603-938-2069 • WWW.BRUSSCONSTRUCTION.COM



## A Culinarian's Column *by Caryl Walker*

This is a delightful savory bread pudding, perfect for a brunch or Sunday night supper. Make a green salad and you have covered all the bases! Serves 6-8 as an entrée.

### Tomato-Goat Cheese Strata

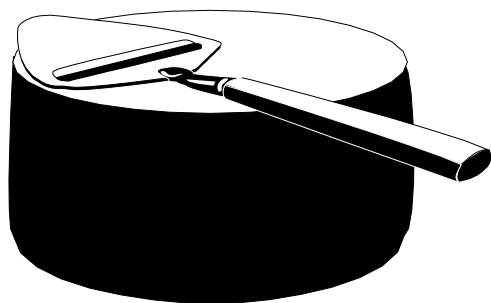
Six eggs  
 1 ½ cups heavy cream  
 1-28 oz. can diced tomatoes  
 3 tablespoons fresh parsley, minced  
 1 teaspoon kosher salt  
 1 medium onion, thinly sliced  
 10-12 ounces day-old artisanal bread, cut into 1" cubes  
 3 tablespoons oil  
 3 garlic cloves, roughly chopped  
 5-6 ounces fresh goat cheese  
 1 tablespoon fresh sage, minced  
 ¼ cup freshly grated Parmesan or Grana Padano cheese  
 ½ teaspoon red pepper flakes

1. Preheat oven to 425°F. Grease a 9x13" pan.
2. In a bowl whisk together eggs, cream and parsley. Set aside.
3. In a sauté pan, heat the olive oil, sweat the onions until lightly browned, add the garlic, sage, and red pepper flakes, stirring for another minute. Add tomatoes and salt and bring to a simmer.
4. Stir the bread into the tomatoes. Pour mixture into prepared pan. Spread goat cheese over bread mixture. Pour egg/cream mixture over all, and sprinkle with Parmesan. Bake until the strata has set and is golden on top, about 25 minutes. Let rest for 5 minutes before serving.

#### Notes:

I used ciabatta bread. Strata is set when a sharp knife comes out clean when inserted 1" from the edge of the casserole

This recipe is adapted from Best of the Best, vol 8  
 Enjoy!



## Library Arts Center Juried Regional Exhibit

The Library Arts Center Gallery & Studios in Newport announces its new show, the 2011 Juried Regional Exhibit from April 30 thru June 10. Jurors Betsy Derrick and Robert J. O'Brien accepted paintings, photographs, drawings, prints, and sculpture from 42 area artists including Bradford artists, **Sasha Wolfe** and **Audrey V. Sylvester**.

Robert O'Brien, an award winning artist and a signature member of the American National and Vermont Watercolor Societies, lives and paints in Weathersfield, VT. Hanover artist Betsy Derrick received her Studio Art Degree from Skidmore College. Her work has been exhibited in New England and in France.

The Library Arts Center, located in the old carriage house of the Richards Free Library, is located at 58 North Main Street in Newport. Gallery hours are Tuesday thru Saturday, 11am – 4 pm. For more information, visit: [librartartscenter.org](http://librartartscenter.org).



"Wish I could Draw." Pigment Ink Print, Audrey V. Sylvester

# You're Invited!

Every Moment Matters  
  
 The Gala  
 TO BENEFIT HOSPICE CARE

Join us with your support and sustain the remarkable care that brings dignity and comfort to patients and their families in every moment.

**Thursday, June 2, 2011**  
**Mount Sunapee Resort**

**Featuring:** •Elegant Hors-d'oeuvres •Live Music  
 •Balloon Blitz •Memory Wall and more!

\$75 per person. For tickets & information, please call:

**Cathy Raymond, 526-4077**



Lake Sunapee Region VNA & HOSPICE

107 Newport Road • New London, NH 03257

[www.lakesunapeevna.org](http://www.lakesunapeevna.org)

## March for Meals

Elder Services of the Community Action Program Belknap-Merrimack Counties, Inc. and the Mountain View Senior Center are hosting a very special event this May to celebrate the Meals on Wheels Program (MOW). The event is a walk; March for Meals that will be held on May 14th in Concord from 9:30 am - 12:30 pm. It is a charitable walk-a-thon to raise public awareness of the Meals on Wheels Program; MOW provides nutritious meals and safety wellness checks to enable older adults to live independently in their homes and communities.

The March for Meals walk will raise funds to help pay for the meals provided to the increasing number of seniors living in central NH. For more information on how to register to participate in the walk or to make a pledge, please call Phil Stockwell, Mountain View Senior Center Director at 938-2104 or Team Leader, Susan Wick at 938-5286.

Thank you for your support!!!!



Walker Automotive welcomes

**WALKER**  
 AUTOMOTIVE

**Chris Chomitz**



Chris invites old acquaintances to come and visit  
 Certified Master Technician

Former owner - Family & Friends Garage, Bradford



3 Deerwood Drive (off Route 11), Wilmot, NH

603-526-4848 [www.WalkerAutomotiveInc.com](http://www.WalkerAutomotiveInc.com)

**The Appleseed Restaurant and Catering We're Affordable!**

Tuesday - Sunday, 5:00 - 9:00 pm and Sunday Morning from 9:00 am - Noon.

Try our award winning \$9.99 Sunday Breakfast Buffet overlooking Lake Todd

Great for those hungry visitors and the kids back from college

Now open for lunch Thursdays through Saturdays

Check out our restaurant at

[www.appleseedrestaurant.com](http://www.appleseedrestaurant.com)

**938-2100**

## Outside

by J. Ann Eldridge

Random observations while uncovering the garlic...

It's the middle of April. After hesitating, stepping back and forth for weeks, the snow seems to have finally departed upon the slow arrival of spring. We have finally descended to walking on bare ground.

Relieved of its glacial burden, the garlic bed has a bad case of 'hat hair'. The deep layer of billowing hay kept in place by the strategic placement of branches, is now plastered to the forehead of the garden in a sweaty, stiff layer.

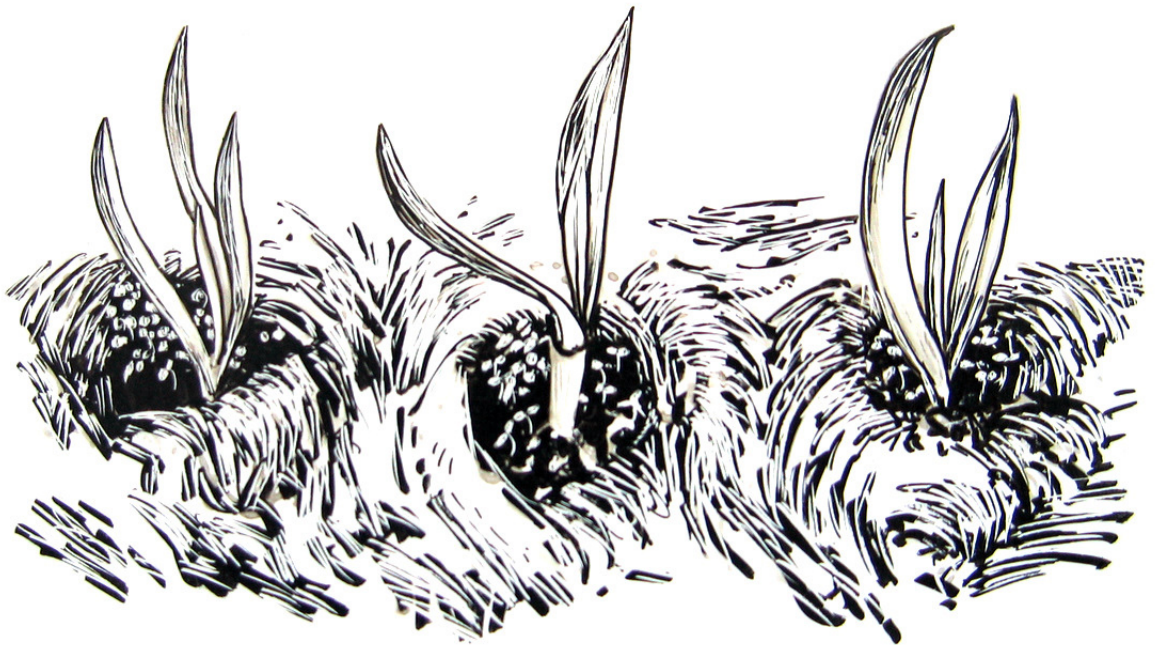
Garlic arrived in North America with early colonists. Its been cultivated for so long that its exact origins are unknown - possibly in lowlands southeast of Siberia. Some call it an herb for its powerful flavor, some call it a food, some call it medicine. Some say it's a member of the lily family, strange as that seems, by the particulars of its slower structures. It rarely ever sets viable seed, though it goes through the motions.

In these northern states, garlic is planted a few inches down, clove by clove, pointy end up, in the fall after the first hard frosts. Its instructions are to begin root growth but keep its head down till spring. Mulch is recommended to prevent frost-heaving. There beneath the flakes of slippery, algae green hay were the sun-starved, yellow-green shoots of garlic. Bent and curled like yoga acolytes coming out of a difficult pose, they are now able to stand in a row at the front of their mats in *tadasana*.

Earthworms were dazzled by the disturbance. Miniature gray slugs, just hatched from the beautiful pearls of their eggs gasped in unison and sucked their nearly microscopic antennae inwards, making

their huddled blobs look more unappealing than usual. Unidentified larvae in communal heaps panicked in ineffective defensive maneuvers.

Cheering wildly at the uncovering of the garlic were legions of sprouting seeds of *Boehmeria* cylindrical, known commonly and unjustly as 'false hemp nettle'. It was present here long before the presumed 'true' nettle and the garlic came over by boat. Ignoring its somewhat pejorative name, this plant is thrilled to have so much disturbed ground to colonize.



A week later, the garlic stands four inches tall and secure in its belief that no animal large or small is likely to impede its progress. Not even the growing slugs. And each at its base has a burgeoning green forest of hemp nettle, as dense as a store bought carton of alfalfa sprouts.

These might well impinge upon the garlic if someone doesn't do something soon.

Bradford Bridge May 2011

### Upcoming Events at Historic Sites in Bradford - Spring/Summer 2011

**May 14th, Sat. at 7:00 pm** - Coffeehouse Concert at the Bradford Center Meetinghouse featuring the Bradford Bog People performing lively foot-stomping traditional Appalachian music - \$10.00. Proceeds will help with building restoration and maintenance. This event is part of Celebrate Bradford's History Day. It coincides with the Grand Reopening of the Historical Society at the Old Post Office Building, by the entrance to the Transfer Station, which will be held from 10:00 am – 2:00 pm the same day.

**May 25th, Wed. at 7:30 pm** - The Historical Society will host the annual High School Concert at the Baptist Church in Bradford. This is a delightful event featuring KRHS chorus and band performers under the direction of Ernie Mills. It highlights the unique acoustics of this historic church building as well as the inspiring musical talents of our local youth. Free and open to all!

**June 11th, Sat. at 7:00 pm** - Coffeehouse Concert - The Mink Hills Band from Warner will perform bluegrass, folk, swing and original music at the Bradford Center Meetinghouse - \$10.00 Proceeds will help with building restoration and maintenance.

**July 15-16th, Fri. & Sat. at 7:30 pm** - Annual Letvvin Concerts featuring the highly acclaimed Shames Family on exquisite classical piano and cello at the Bradford Center Meetinghouse - \$15.00 tickets available in advance. Call 938-5373.

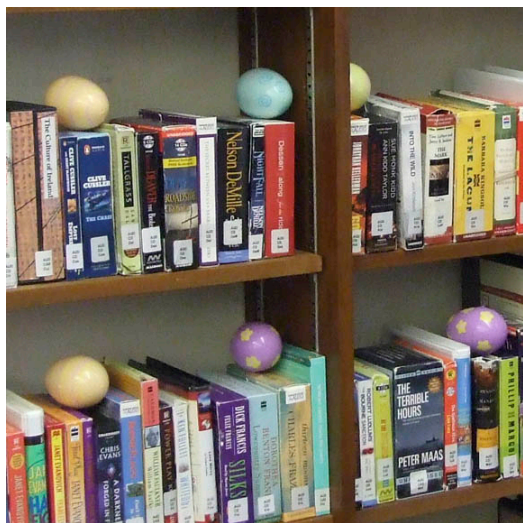
**August 7th, Sun. at 2:00 pm** - Band Concert and Ice Cream Social with the Kearsarge Community Band at the Bradford Center Meetinghouse. FREE FAMILY FUN !

**August 28th Sun. at 10:00 am** - Church Service at the Bradford Center Meetinghouse with Pastor Lynne Hubley - Open to all.

For more information contact Laurie Buchar at 938-5372 or email [lbuchar@gmail.com](mailto:lbuchar@gmail.com)

*Directions to historic Bradford Center (detour while the covered Bement Bridge is under construction). Turn off of Rte.114 by the town sand pit onto Jones Rd. Follow for less than one mile until it merges with Center Rd. Follow Center Rd. for about two miles, past historic Battles Farms, to the intersection with Rowe Mountain Rd. Go left on Rowe Mtn. Rd and follow one quarter mile. The Meetinghouse will be evident on your left, with adjacent Schoolhouse, Burial Ground, Town Green, Town Pound. A signpost and plaque mark the spot. Caution for GPS users: try using the address 35 Rowe Mtn. Rd., but do not follow directions that take you on Forest St. unless you have a four-wheel drive vehicle.*

#### Easter Fun at the Library



*During the Annual Easter Egg Hunt (held indoors this year), more than 100 children and their parents listened to stories in the Children's Room before searching for 800 stuffed eggs hidden in the library's stacks and planters. A guest appearance from the Easter Bunny was arranged the Kearsarge Area Pre-School and Easter Dog Mocha brought handmade doggie treats for family dogs.*