

# THE Bradford Bridge

COMMUNITY NEWS FOR NEIGHBORS BY NEIGHBORS

Volume 22, Number 1; Issue 234

January 2011

## Grants Awarded for Battles Farm Conservation Easement

On December 6th, the Land and Community Heritage Investment Program (LCHIP), an independent state authority that awards matching grants for N.H. communities and non-profits to conserve and preserve New Hampshire's most important natural, cultural, and historic resources, announced its fall 2010 funding choices in a ceremony at the State Legislative building. A photograph of Battles Farm was front and center as the property received a grant for up to \$140,000. The day after word was received about the LCHIP grant, the project was further recognized with a Moose Plate grant for \$30,000.

Battles Farm, with its views, history, wildlife habitat, agricultural and recreational potential as well as flood control benefits to the town, has long been cited as an important resource to the town in all three of Bradford's Master Plan surveys as well as the Community Cornerstone Project. The town's Wetlands Inventory, the State Wildlife Action Plan and numerous other natural resource studies confirm this property's significance in the region.

This past summer, a coalition of the Bradford Conservation Commission, and the non-profit Rural Heritage Connection of Bradford (whose past efforts include the addition of 77 acres to the Bradford Bog Conservation

The following Town Committees have vacancies. If you are interested in running for election for a Town Office, please sign up with the Town Clerk from January 19 to January 28, 2011. Elections will take place on Tuesday, March 8, 2011.

Moderator For Two Years (One opening)  
Town Clerk/Tax Collector for Three Years (one opening)  
Treasurer For Three Years (one opening)  
Supervisor of The Checklist for three Years (two Openings)  
Trustee of The Trust Funds, Three years, (one opening)  
Trustee of The Brown Memorial Library for Three Years (three openings)  
Scholarship Committee, Three Years (one opening)  
Budget Committee for Three Years (three openings)  
Planning Board for Three Years (three openings)  
Zoning Board for Three Years (two openings for Board)  
Cemetery Commission for Three Years (one opening)  
Conservation Commission for Three Years (one opening)

Remember to contact the Town Clerk's Office between January 19 and 28<sup>th</sup> to run for office.

Election Day, Tuesday, March 8, at the KRES, Bradford, 8:00AM to 7:00PM  
Town Meeting, Wednesday, March 9, at the KRES Bradford, 7:00PM

## 10 QUESTIONS

by Phyllis Wilcox

*This month we interviewed Mel Pfeifle, a Bradford resident for 39 years and owner of Hampshire Kennels. Two years ago she became involved with a training program for Labrador Retrievers named "Puppies Behind Bars." This program helps incarcerated individuals train puppies to assist veterans and others who need service dogs to assist with everyday living.*

**Q. Your life is centered on dogs, either breeding or showing at kennel club events. Did you grow up with dogs? Was this a lifelong dream to work with animals? Were your parents dog breeders?**

Yes, I grew up with housedogs. I lived in Connecticut. We did not own fancy breeds just ordinary dogs. I had horses and hunted foxes. There was no family history of breeding dogs.


**Q. You mentioned that you moved to Bradford 39 years ago and began to raise Labrador Retrievers along with raising three sons. Which came first, the sons or the dogs?**

The sons came first. Our oldest son was first and then the dogs but they were always part of the picture.

**Q. You describe Bradford as a town with an ideal environment to raise your family with its blend of outdoor activities and easy access to city culture. Undeniably, the outdoor environment is splendid but the access to city culture might be questioned by some. Explain please?**

I find that commuting to Boston is only 90 miles. You can very quickly be out of the rural area and enjoying the city happenings. That is why this town has become a bedroom com-

*(continued on page 8)*

<p><b>The Bradford Bridge</b></p> <p>P.O. Box 463 Bradford, NH 03221 Ph.: 603-938-2692 contact.us@bradfordbridge.com</p>	
<p><b>VOLUNTEER STAFF</b></p> <p>Beth Rodd, Marcia Keller, Editors, Maureen O'Keefe, Treasurer, Ad Rep Marion Hall, Subscriptions &amp; Distribution Dick &amp; Marcia Keller, Distribution Andrea &amp; Phil LaMoreaux, Distribution Carey Rodd, Sandy Richard, Layout</p> <p><b>ADVISORY BOARD</b></p> <p>Harriett Douglass, Marion Hall, Mary Keegan- Dayton, Marcia Keller, Beth Rodd, Audrey V. Sylvester, Phyllis Wilcox</p> <p>Printed by RC Brayshaw &amp; Co., Inc.</p>	
<p><b>Subscription Information</b></p> <p>To receive The Bridge by mail, please send a \$20 check to cover mailing costs to the above address.</p>	
<p><b>Advertising</b></p> <p>The Bradford Bridge is a free community news- paper supported by advertisers. To place an ad, call Maureen O'Keefe at 938-2941. Ad deadline is the 15th of the month.</p>	
<p><b>Submissions</b></p> <p>The Bradford Bridge is written by neighbors, for neighbors. Anyone is welcome to submit articles and/or photographs of interest to the community. We reserve the right to edit submissions.</p>	

<p><b>Selectmen's Office Hours</b> 938-5900</p>	
Mon-Weds-Thurs:	7:30 am-12 noon 1:00 pm-5:00 pm
Tuesday:	7:30 am-12 noon 1:00 pm-7:00 pm
Friday:	8:00am-noon
<p>Selectmen meet the 1st and 3rd Tuesday of each month at 5:30 pm</p>	
<p><b>Town Clerk/ Tax Collector Office Hours</b> 938-2288</p>	
Monday:	noon-7:00 pm
Tuesday:	7:00 am-11:30 am 12:30 pm-5:00 pm
Friday:	8:00 am-11:30 am and 12:30 pm-5:00 pm
<p><b>Circuit Rider</b> <b>Wednesday</b> call 938-2253 for appointment</p>	

## Letter from the Editor

A new year. A new beginning. January 1<sup>st</sup> marks the end of the past, the beginning of the future. It's cold and windy, a good time to hibernate and reflect. It's a time for making resolutions for self-improvement and a very active time for new memberships at local health clubs. It's quiet, cold and white here in New Hampshire, not much going on but plowing, making sure we have candles and flashlights in case of an outage, going off to the mountain to ski or amble across flat, silent fields on cross-country ski expeditions. We're looking longingly at ads for Caribbean get-aways. There are some things we ought to attend to, even in the quiet hush of winter. Our neighbors, for instance, the folks who live alone and need checking but are too proud to make themselves known. You know who they are. Make sure they're safe. Knock on their doors now and then, sit down for a cup of tea. The kids next door whose parents have come on hard economic times. Be open and friendly, give them a few kind words or offer a ride to the movies or take them out to lunch. Be a Big Brother or Sister. Sit with a hospice patient and listen to the story of their lives. Adopt a dog or cat. Splurge on a massage or a facial. Eat well, take care of and pamper yourself and others. Laugh a lot. Spread joy. Be well. Happy New Year.

Beth Rodd  
January Editor

**HAPPY  
NEW  
YEAR**

<p><b>Bradford Bridge Advertising Rates</b></p> <p>Ads run \$8 per column inch, e.g an ad one inch high and one column wide will cost \$8 per month; an ad 2 inches high and 2 columns wide will run \$32. Ads run for a year are discounted. Classified ads for items less than \$250 in value are free.</p>
---

## Planning Board Notes

**Boundary Line Adjustment and Street Plat** The Planning Board approved two applications submitted by Bruss Construction for the former Dodge/Masters Store location on East Main Street. The boundary adjustment adds the now vacant lot beside the store to provide parking for the whatever use is proposed for the building. The storage units in the back are on a separate parcel. The Street Plat provides the needed access to that lot, to the telephone company building, and a deeded right-of-way to the Marshall/Naughton property.

Board members remarked that Main Street already looks better since the second building has been removed.

**Zoning Amendments:** Following a Public Hearing, the Board voted on the wording for five amendments to the Zoning Ordinance to be presented to voters on the ballot at Town Meeting. Copies of the proposed amendments will be available at the Town Hall and Brown Memorial Library and at the polls on Town Meeting election day, March 8th from 8AM – 7PM KRES Bradford.

*Minutes of all Planning Board meetings are on file at the Town Hall and online at [bradfordnh.org](http://bradfordnh.org).*

Support our Advertisers  
We couldn't publish the Bridge without them.

The best way to keep them advertising is to support them and thank them for supporting our community and the Bradford Bridge.

## What is a Conservation Easement?

A conservation easement is a legal agreement between a landowner and a land trust, government entity, or other qualified organization that permanently protects specified conservation values on a piece of property. It is a legal document that is permanently and irrevocably attached to the deed even as the property changes hands over time. Easements have been tested all the way to the NH Supreme Court and have held.

Land under easement can still be sold, given, willed, or traded like any other property. Easements are voluntary and every easement is different, depending on both the property and the landowner that creates the easement. In some cases, limited development may be allowed. Public access to the property is often included and specified, especially when public funds are expended. Traditional and sustainable uses, such as logging and agriculture, usually continue, often under guidance by professionals.

Conservation easements are designed for lands that have special features. Some of the most common attributes are large, unfragmented blocks, smaller parcels that are wildlife corridors between larger blocks, rare or endangered species and habitats, outstanding views, recreation resources, water resources, flood control, agricultural or forestry lands, or features of special historic character.

Most of the easements in town are privately owned. Two, the Bradford Bog/Bradford Springs Hotel Site and the Aiken Town Forest, are owned by the town. Battles Farm is privately owned and of such significant value to the town that the current owners will be paid for part of the value of the rights removed by the easement (the landowners will donate the balance of the value) – in other words, the loss of property value – as determined by a certified appraisal. A conservation

easement on Battles Farm does not change the property taxes the farm pays to the town. In fact, the easement benefits Bradford taxpayers: studies within New Hampshire have demonstrated that more undeveloped open space means lower tax rates because undeveloped land requires fewer expensive town services while still providing tax revenue.

Bradford is fortunate to be within the target area of the Ausbon Sargent Land Preservation Trust (ASLPT). Ausbon Sargent has had more than 20 years of experience designing conservation easements, and this project would not have succeeded without their leadership and hard work.

There are many properties in town that have special features worth protecting with a conservation easement. It is the best way for a landowner to ensure his property remains undeveloped into the future. If you have any questions about conservation easements, please contact the Ausbon Sargent Land Protection Trust at 526-6555 or [www.ausbonsargent.org](http://www.ausbonsargent.org), or the chair of the Bradford Conservation Commission, Nathaniel Bruss, at 748-2831 or [nate.bruss@gmail.com](mailto:nate.bruss@gmail.com).

**the Rolling Pin In a Jam?**

Try some of Sorabath's award winning preserves— Available in 8 varieties— a sweet treat without a lot of added sugar & calories!



**20% Off Storewide Every Tuesday!**

Now 'til Christmas—Open Every Day 10 to 5  
104 Route 103 • Newbury, NH  
Across from Lake Todd  
**603-938-5191**  
[www.rollingpinshop.com](http://www.rollingpinshop.com)

## Bradford Bridge January 2011



**BRADFORD** - Solar oriented home that is close to downtown and also close to Lake Todd. Two bedrooms, 1 1/2 baths, kitchen with lots of cabinets plus a walk-in pantry. Cedar hot tub on rear deck. Pear, peach and apple trees. Nice setting. **\$195,000**



**BRADFORD**-New to be built cape on 2 acres with VIEWS facing west at the Sunapee Mountain Range. Three BR's, two baths, very efficient new home to be built. Photo is of a similar cape built nearby. **\$198,500**



**BRADFORD**-Level land with a VIEW and an 11 room and 2.5 bath home on 11.4 acres. A horse property in the past with barn that has water & electric, 28' X50 colonial, wood and tile **\$278,500**

**ELLIOT HANSEN ASSOCIATES**  
A Real Estate Company  
**603-763-9999**

[www.ellioghansen.com](http://www.ellioghansen.com)

269 Tracy Road, New London, NH 03257

To see these fine properties and all others in Bradford, click on:

[www.bradfordnhrealestate.com](http://www.bradfordnhrealestate.com)

Sarah W. Chapin  
Registered Pharmacist



YOUR FRIENDLY  
PHARMACY

• PO Box 718 • Henniker, NH 03242

Phone (603) 428-3456

Fax (603) 428-7793

Email: [HennikerRx@aol.com](mailto:HennikerRx@aol.com)

## Selectman's Highlights

**Budget:** The Selectmen have spent many hours reviewing department budgets, making some changes, and forwarding them to the Budget Committee for its action. One area of concern is the Rescue Squad, whose budget shows a marked increase in order to hire two per diem members to cover those hours when local volunteers are not available.

Rescue Squad Captain Rich Branch and Fire Chief Mark Goldberg have been discussing possible cooperation with Henniker. Contacting Bruce King CEO of New London Hospital was also suggested so the town can consider other options. The hospital is reaching out to surrounding towns to help deal with losses currently being faced by its ambulance service.

**BACC :** Selectmen forwarded a proposed job description to the BACC Governance Board for comments for a part-time director of the Center, eliminating the combined position that had included Parks and Recreation programs. At a subsequent meeting, Chair of the BACC Board, John Bruss and Center Director, Kate Dobrowski offered some changes and both were of the opinion that the tasks outlined could not be completed in a 20 hour work week. At a later meeting,


concerned citizens Sue McKeivitt and Tom Wilkens presented a letter requesting the selectmen to fund the position as full-time through Town Meeting. They plan to submit a petition to keep the director's position full-time as approved by voters three years ago.

The selectmen reiterated their decision to run the Bradford Area Community Center with a part-time director beginning January 1, 2011 with the statement that it could be revisited next year if it does not work out.

**Police** Chief Jim Valiquet introduced Brian Eaton as the new full time officer, who will be funded under the *Cops* Grant recently awarded to the town.


**Public Works Department:** Selectmen voted to place an article on the warrant for Town Meeting asking voters if they want to create a Public Works Department that will combine the Highway and Transfer Station operations under one supervisor. Town meeting approval is required in order to make this change.

*Minutes of all selectmen's meetings are on file at the Town Hall and online at [bradfordnh.org](http://bradfordnh.org).*



**FUELS**

**24 HOUR SELF SERVICE  
GASOLINE & DIESEL PUMPS**



Serving the area's heating needs for more than 60 years  
FUEL OILS & LP GAS / COMPLETE HEATING SERVICE

**938-5335**

Route 114, Bradford • Hall Ave., Henniker . . . 428-3333

## Letters to the Editor

To The Editor:

My opposition to the decision made by the Bradford Selectmen to change the position of the BACC Director to part time of 20 hours made my very difficult decision to resign from the BACC governance board committee. Since the center opened, past and present loyal volunteer board members have made it possible to create this active community center with a full time director for all intergenerational groups. My letter of resignation to the selectmen will be effective 1/11/11. Thank you to the Bradford area community for your caring support you have given to me as a BACC board member for the past ten years.

Dawn Rich

To the Editor,

We wish to express our disappointment at the results of the Dec. 7th, 2010 selectmen's meeting regarding moving the Director of the BACC position from full time to part time. At a past town meeting in March, the town voted to make the part-time position full time inclusive of the Parks and Recreation activities and the position has been thus since then.

This August the selectmen expressed concern that the BACC was not being utilized to its fullest capacity. There are data conflicts as to exactly how much the Center is being utilized but that was the originating concern. Somewhere in the ensuing time the focus shifted to the Director position being cut to part time as of Jan. 1, 2011. This solution seems to defeat the original concern. Growing capacity by cutting the Director position in half makes little sense. When the public became aware of this decision (rendered without input from the BACC or the Parks and Rec members), a meeting was held where concerns were expressed about both the process used by the selectmen of that

decision (i.e., that it was contrary to the town vote and not clearly based on accurate data or members input) and its result.

There remains a clear difference between the selectmen and those who know of and have done the work to keep the BACC going. A warrant article to keep a full time Director, with benefits, will be circulated and placed on the March Town meeting agenda.

We are requesting that rather than reducing the position on Jan 1, the position stay full time until the results of the March Town Meeting where the public will once again be able to determine whether or not it wishes the Community center to be staffed with a full time or part time Director.

Respectfully,

Sue McKeivitt

Tom Wilkins

*\*This letter has been heavily edited in length. For a complete reading, check the official transcript of the December 21 selectmen's meeting*

*The Bradford Bridge welcomes letters to the editor. Word limit is 250 and all letters are subject to editing for style, grammar and taste. Anonymous letters will not be printed. Please include name and daytime telephone number. Space limitations do not allow for back & forth letters from the same writers. Send letters to Contact.us@bradfordbridge.com or P.O. Box 463, Bradford, N.H. 03221*

To the Editor,  
Frederick Douglas observed that it is easier to build a strong child than it is to mend a broken man.

Programs like those operated by NFI North place considerable effort into redirecting youth that have strayed from that path. Treatment includes a trauma-focused approach that instead of asking "What is wrong with you?" asks "What happened to you?" Dedicated staff devote their careers to helping these youth and make significant investments of time, effort, and part of themselves to salvage abused, neglected, and sometimes delinquent youth. To see youth that were failing in school, and sometimes in life, discover an inner strength to set out in a new direction and continue on to college and successful careers is an indescribable joy that is the true compensation for what we do. There are times when even our best efforts cannot undo the damage and the heartache is just as acute as the joy of our successes.

I love Bradford, as did my mother when she spent her summers here as a child. I want to believe very much that the rumors and finger pointing following the school bus fire is simply misunderstanding and not the mean spirited ignorance that it sounded like. For those that chose to jump to conclusions, I hope that you have since heard that the State Police almost immediately ruled out the youth at NFI North and apologized for even having to ask. Please have a better understanding of the work that we do. Perhaps your unfounded fears and intolerance will be somewhat tempered.

Thomas Grinley  
Cressy Rd.  
Bradford

**Hugo's Electric, Inc.**

Licensed & Insured  
RESIDENTIAL • COMMERCIAL  
938-5573  
3191 State Rte 114, Bradford

## Obituaries

### Patricia Curless

Patricia (Minott) Curless, 77, of Davis Road, died Dec. 17, 2010, at Concord Hospital.

She was born in Deerfield, Mass., on Nov. 19, 1933, the daughter of Ivan C. and Hazel (Monteith) Minott. She received her R.N. at New England Deaconess Hospital. Pat was an excellent nurse and worked at various places, including Columbus, GA, Emerson Hospital in Concord, MA, the Concord Clinic for Dr. Hayes, as head nurse at New London Hospital and McKerley Nursing Home in Concord. Most recently, she owned and operated Medical Records Service. Pat lived in Acton, MA for several years before moving to Bradford in 1972. She enjoyed knitting and taught her daughter and grandchildren how to knit. She was an avid NA-SCAR Fan.

She was predeceased by siblings Jon, Jackie and Robert. Members of her family surviving include her husband of 53 years, William F. Curless of Bradford; three children, William and Debbie Curless of Sutton, Jeffrey and Laurie Curless of Milford, and Lisa and Al Myers of Bradford; eight grandchildren, Andrea, Benjamin, Abigail, Jeffrey, Elizabeth, Adrian, Meaghan and Emily; two great-grandchildren, Gregory and Edward; a brother, Russell Minott of North Carolina; and nieces, nephews and cousins.

A graveside service will be held in the spring at Sunny Plain Cemetery in Bradford. Memorial donations may be made to Concord Regional Visiting Nurse Association, 30 Pillsbury St., Concord 03301.

### Myrtle J. Wiggins

Myrtle J. Wiggins, 76, of Sunapee, passed away Dec. 5, 2010, at New London Hospital, surrounded by her family.

Myrtle was born Dec. 9, 1933, in Springfield, New Brunswick, the daughter of the late John B. and Helen L. (Myshrall) Hull. She was raised and educated in New Brunswick, moving to New Hampshire when she married Robert Earl Wiggins on Feb. 23, 1952. They shared 46 years together when he passed on Nov. 12, 1998. She and Bob ran the Robert Wiggins Construction business successfully over the years and loved hunting and fishing together.

She was an avid reader; she enjoyed gardening, watching the birds, deer, fox and other wildlife around her home; and Myrtle, as she was called, was an excellent cook.

She was predeceased by two brothers, Dean and Shirley Hull. Survivors include her two daughters, Juanita (formerly Battles) and Ed Erickson of Bradford and Rosita Wiggins and William Prescott of Laconia; two sons, Dennis and Lynne Wiggins and Van and Sharon Wiggins, all of Sunapee; a brother, Leslie Hull of Silverwood, New Brunswick; a sister, Carmel and Emery Morgan of Middle Hainseville, New Brunswick; seven grandchildren; four great-grandchildren; and several cousins, nieces and nephews. Burial was at Eastman Cemetery on North Road in Sunapee.

### George F. Wunderlich

George F. Wunderlich, 69, died Dec. 23, 2010, at Hospice House in Concord. He was born Aug. 9, 1941, son of the late Frank and Olive Wunderlich of Contoocook. He was also predeceased by his brother John Wunderlich of Concord. He owned and operated Blackwater Tool & Die. He is survived by his three children, Timothy J. Wunderlich of Bradford, Lisa A. Wunderlich of New Boston and Stacy L. Rowe of Salisbury; a sister, Brenda John of Concord; a brother, Paul Wunderlich of Contoocook; four grandchildren; two nieces; and a nephew. A graveside service will be held this spring in Hopkinton. Memorial donations may be made to Concord Regional Visiting Nurse Association Hospice House, 30 Pillsbury St., Concord 03301.



New Bridge e-mail  
address:

[contact.us@bradfordbridge.com](mailto:contact.us@bradfordbridge.com)

or go to the site:

<http://www.bradfordbridge.com>

## Bradford Newbury Sutton Youth Sports News!

It's not too early to be thinking Baseball and Softball. Spring is right around the corner and we are all gearing up for a great season! If you have an opportunity to drive by the Warren Brook Park, you will notice a brand new roughed in baseball field. Thanks to Valley Excavation and crew for the incredible donation to make this all possible. A special thanks to Nate Kimball for his time and expertise!! Please visit our website at [www.bnsys.org](http://www.bnsys.org) to see the photos of the ground breaking process.

This field will host a new 60' / 70' diamond. Cal Ripken has suggested that their Major teams start playing on a field with 70' base paths. The reasoning is that the 60' base path field is too small for that age group and playing on a slightly larger field will help prevent injuries to the players. This new division will offer a 50' pitching distance along with the 70' base paths. The rookie and minor programs will still use a 46' pitching distance and 60' base paths. The field will be convertible from a 60' field to a 70' field without much of a change. It will allow BNSYS to offer tournaments with complying with the new field regulations. This field will be seeded this spring and available for our program spring of 2012. Our baseball program offers participation for players ages 4 through 12yrs of age for Cal Ripken and 13 through 15 yrs of age for the Babe Ruth program.

BNSYS offers a softball program to players ages 6-16 yrs of age for all girls in the Kearsarge District (Warner, Bradford, Newbury, New London, Sutton, Wilmot) Our softball program encourages players to continue to participate in the BNSYS programs during the Middle and High School. We offer a U14 program for ages 13-14 and also a U16 for ages 16 and under. BNSYS does well not to interfere with the schedules of school games and practices, and continues well beyond the school season to give the opportunity to players to extend their season and give extra playing time. Sign-ups are encouraged early and available registration forms are available online at [www.bnsys.org](http://www.bnsys.org). Our Season has moved up earlier this year to April 18th, 2011 opening day, so register today!!!!

Soccer ended with another successful season with 144 children participating in our program. We capped off the season by hosting the Girls' C Division and Boys' B Division for the fifth and sixth grade tournaments. During this past summer's soccer camp we organized a free session of referee instruction. The idea is to "grow" our own future referees. And indeed, you might have noticed some youth refs at your child's games. This can be a great leadership opportunity for interested and experienced soccer players in the program and for those that graduated from it. So check in at the website [www.bnsys.org](http://www.bnsys.org) to see what's going on and what's being offered.

BNSYS also would like to say THANK YOU to all of the parents and volunteers that have helped our program throughout the year to continue to give our children sports opportunities.

Respectfully submitted,

Tina Desfosses  
Bradford Newbury Sutton Youth Sports  
Secretary/Softball Director



Henniker \$199,900  
TOTALLY RENOVATED



Warner \$399,900  
SPACIOUS RETREAT

938-2366



Located at the Covered Bridge  
Ann C. Hallahan, Broker/Owner  
Laura Hallahan  
Maryann Plass  
[www.tallpinesnh.com](http://www.tallpinesnh.com)

Tired of our old beige paper? Try getting the Bridge online and enjoy the pictures in vibrant color. Go to the new Bradford Bridge web site, <http://bradfordbridge.com> and download the latest Bridge as well as some of the older ones which are being put on line.



Bradford Bridge January 2011

(10 Questions - cont'd from p. 1)

munity. When we moved here in 1971, there were stores and shops on Main Street and a very different atmosphere. When I feel like it, I go to the city. I would rather be here.

**Q. Your start with your dog involvement began with a gift from a friend who had to give up her dogs.**

She gave me Champion Typerary. She was our next-door neighbor in New Canaan. She was a lovely woman who grew up in San Simeon. The owners were William Randolph Hearst and the film star, Marion Davies. She married the head of a large newspaper and when he died she could not re-marry or she would lose her property. I would cross over the stonewall and join her for a drink. She gave me Tippy when she moved to Florida. Tippy became the mother of our first litter. That was the beginning. I was used to breeding horses but I soon learned all about dogs.

**Q. Does your family share your enthusiasm for your dog breeding, showing and now working with "Puppies Behind Bars.?" Have they been helpful over the years?**

I would say that they have been supportive but it was one hundred percent my venture. My husband John has driven with me to pick up the dogs but he is not into that. He has been wonderful with monetary support but not actual physical assistance unless I was sick and could not do it.

**Q. Have you won many awards over the years? You mentioned winning the "National" with "Puh's Superman." I imagine that it must be a thrill to win. Would you like to tell me about it?**

I have had ten or twelve champions. I showed them earlier on. It is not my favorite part of what I do. I liked raising the puppies. I have a handler now and my dogs are still

showing The biggest thrill is when I have bred and raised the dog and then it becomes a champion.

**Q. How do you manage when you leave on business or pleasure? Do you have people you can rely on to take care of things when you are away?**

Jessica Blaney and her husband help with that. They are farmers who raise pigs and have cows. They live up the road in Warner



**Q. Your latest venture is "Puppies Behind Bars." You have been involved with this organization for two years. Did they contact you?**

They contacted me. The first three dogs were yellow labs named Oprah, Glen and Frieda, named after Oprah Winfrey, Glen Close and I am not certain about Frieda. They are trained as service dogs. They have to master 180 commands. Those dogs go to veterans who were wounded in Afghanistan or Iraq or have "Post Traumatic Stress Disorder" (PTSD)

or brain injury. The man who received Glen lost his legs. He is 29 years old. Each dog costs about \$20,000. to train They leave me when they are eight weeks old and they are ready to take on the world by themselves. The prisoners who train the dogs are in medium or maximum prisons in New York State. The prisoners and dogs live together twenty-four hours a day. Once the dogs are trained they bring in the candidates for the dogs and there is a training program for the dogs and the owners. When the dogs are trained to sniff bombs they go to the ATF or FBI or police departments. Labs are not aggressive and can go into the community.

**Q. It must be difficult to give up your puppies. Do you ever see them again?**

I have no contact with the puppies once they leave here for the program. I do hear if they are successful or not. It is different when I sell my dogs. I consult with the owners as needed.

**Q. Do you see yourself continuing with your dogs for the foreseeable future? You mentioned that you and your husband have lapsed pilot licenses. Do you think you might revive that part of your life?**

Yes, I plan to continue with the dogs. I would love to renew my pilot license but it depends on age, time and money. The dogs are part of my life.

We're the hometown bank  
for all of your personal  
and business banking needs.

How can we help you?



1 Newport | Grantham | New London | Sunapee | Warner | 800-562-3145 | [sugarriverbank.com](http://sugarriverbank.com) | Member FDIC | Equal Housing Lender



## Kearsarge Area Preschool News

by Karen Lynn Hambleton

With the approach of the holidays, the Preschool was a-buzz with excitement! The class learned about various holidays celebrated in December including the Festival of Lights, Hanukkah, Kwanza and Christmas. Children also explored the traditional foods and games associated with each holiday. Preschoolers decorated the classroom with snowflakes, read stories and sang songs about the holidays. The class also did an author study of Jan Brett. They read and discussed her stories, then did a craft associated with each story. Children also made gifts for their families. The Mountain View Senior Center invited the class to join them for a Christmas performance by members of The College of Saint Mary Magdalen choir. The preschoolers thoroughly enjoyed themselves. Just before Christmas, the children baked cookies and delivered them to our friends at the Fire Station, Police Station, Brown Memorial Library, Lake Sunapee Bank and Pizza Chef. As part of our Christmas celebration, the class performed a Holiday Show for their families.

This month, the class will focus on letters J, K, L and M. Children will learn about the jungle. They will discuss what a jungle is, the different kinds of animals that live there and how they live. Through stories and discussion, the class will also explore the concept of kindness. They will learn what it means to be kind and how being kind makes others feel. Children will add feeling words to their Spanish vocabulary. Later in the month, preschoolers will learn about length and measuring. This is a great way for children to study the idea of comparison. The class will also study Martin Luther King. They will discuss why he is important and read stories about freedom. Another topic the preschool will explore is listening. Students will learn to identify musical instruments and connect movement to sound. As the month closes, children will investigate the concept of mystery by creating and acting out mystery stories.

The Preschool extends a great big thank you to the following businesses that generously made our Breakfast with Santa a success: The Appleseed Restaurant, The Bradford Junction, Outspokin', The Bagel Basement, Stone Arch Bakery, Price Chopper, Sam's Club, Shaw's and Walmart.

For information on our programs, please call 938-5787.



*Owen, Brittany, Ellery, Jada and Vivian bake cookies for the community.*

## Budget Committee

The Bradford Budget Committee, at its meeting on December 21st, reviewed the latest selectmen's proposal for the 2011 operating budget. In the departmental budgets, the major increases over last year's operating expenditures were: executive office 12.6%, employee benefits 11%, other general government 22%, police department 8.9% (a balance of \$50,000 for 2010 was noted for the police department), rescue squad 113%, and highway department 17%.

The overall operating budget being proposed at this point in the process is up 7.9% over the voter approved 2010 operating budget. Not included are any warrant articles. These have not yet been submitted to the Budget Committee.

A Public Hearing on the final proposed 2011 budget will be scheduled during the first two weeks of February – watch for the date.

*All Budget Committee meetings are open to the public and minutes are on file at the Town Hall and online at [bradfordnh.org](http://bradfordnh.org).*

## WALCO MECHANICAL CO.

REFRIGERATION, HEATING,

AIR CONDITIONING,

ELECTRICAL CONTRACTORS

COMMERCIAL • INDUSTRIAL • RESIDENTIAL

SERVICE • SALES • INSTALLATION

MAINTENANCE PROGRAMS

SYSTEM EVALUATIONS

938-2926

## JANUARY CALENDAR

### Mon. Jan. 3rd

8:45 AM -Mt. View Sr. Ctr. Fitness

10:00 AM - Ceramics Class

1-4:00 PM - Bridge Group

3:30 - 6:00 PM - Watercolor Class

### Tues. Jan. 4<sup>th</sup>

9:00 AM - 12:00 noon - Fuel Assistance. Call 456-2207 for appt

10:00 AM - Stitches from the Heart

12 Noon - Senior Dining - LSVNA Judy Thackaberry on prevention of tripping and fall hazards

6:00 PM - Yoga Class - call Fran at 456-3099

### Wed. Jan. 5

3:30 - 4:30 PM - Kids Yoga

6:00 - 7:30 PM - Special Party

7:00 PM - Library Book Group, BML

### Thurs. Jan. 6th

12 Noon - Senior Dining

### Fri. Jan. 7th

8:45 AM - Mt. View Sr. Ctr. Fitness

11:30 AM - First Friday Brunch raffle, Bradford Bog, door prizes

7:00 PM - Book-to-Movie Discussion *Temple Grandin*, BML

### Sat. Jan. 8

10:00 AM - Noon - Bradford Barter

9:00 AM - **KRSD Annual Meeting first session (deliberative) KRHS**

### Mon. Jan. 10th

8:45 AM - Mt. View Sr. Ctr. Fitness

10:00 AM - Ceramics Class

1-4:00 PM - Bridge

3:30 - 6:00 PM - Watercolor Class

5:30 -7:00 PM - 4 - H

7:00 PM - Rural Heritage Connection

### Tues. Jan. 11th

10:00 AM - Stitches from the Heart

12:00 Noon - Senior Dining

5:00 PM - BACC Committee Meeting

6:00 - 7:30 PM - Yoga Class - call Fran at 456-3099

### Wed. Jan. 12

3:30 - 4:30 PM - Kids

Yoga

### Thurs. Jan. 13th

12 Noon - Senior Dining

### Fri. Jan. 14th

8:45 AM - Mt. View Sr. Ctr. Fitness

12 noon - Café Bienvenue

### Sat. Jan 15

9:00 - 11:00 AM -Writing group

10:00 AM - Bradford Improvement Association

### Mon. Jan. 17th

**Martin Luther King Holiday**

Senior Center Closed - No Meals on Wheels

Brown Memorial Library open 10-8

1:00 - 4:00 PM - Bridge Group

### Tues. Jan. 18th

9:00 AM - 12:00 noon -Fuel Assistance. Call 456-2207 for appt

10:00 AM - Stitches from the Heart

12 Noon - Senior Dining

6:00 - 7:30 PM - Yoga Class

### Wed. Jan.19

3:30 - 4:30 PM - Kids Yoga

Filing Period begins for local elected offices

See Town Clerk Office Hours

### Thurs. Jan 20th

10:30 AM - 12 Noon - Blood Pressure Clinic LSVNA

12 Noon - Senior Dining - speaker Dick Smith,

"If It's Going to Be,  
It's Up to Me"

11 AM - 1PM - **Free Spinal Screenings** - Lewis Chiropractic of Henniker

1:00-3:00 PM - Foot Care Clinic LSVNA Call 526-4077 for appt.

### Fri. Jan. 21st

8:45 AM - Mt. View Sr. Ctr. Fitness

10:00 AM - Friday at the Movies: *Eat Pray Love* with Julia Roberts

9:30-11:30 AM - Foot Care Clinic LSVNA North Ridge Apartments Call for appt. at 526-4077

12:30 PM - Café Bienvenue

7:00 PM - International Movie (Vietnam), BML

### Mon. Jan. 24nd

8:45 AM - Mt. View Sr. Ctr. Fitness

10:00 AM - Ceramics Class

1:00 - 4:00 PM - Bridge Group

3:30 - 6:00 PM - Watercolor Class

### Tues. Jan. 25th

10:00 AM - Stitches from the Heart

12 Noon - Senior Dining

6:00 - 7:30 PM Yoga Class

### Wed. Jan. 26th

10:30 AM -12 Noon - Blood Pressure Clinic -Warner Senior Room by LSVNA

3:30 - 4:30 PM - Kids Yoga

### Thurs. Jan 27th

12 Noon - Senior Dining

### Fri. Jan. 28th

8:00 AM - 11:30 AM and 12:30 PM - 5:00 PM **Town Clerk's Office - last day to file for vacant local offices**

12 noon - Café Bienvenue

### Mon. Jan. 31st

8:45 AM - Mt. View Sr. Ctr. Fitness

10:00 AM - Ceramics Class

1-4:00 PM - Bridge Group

All events take place at the Bradford Area Community Center (938-6228) or the Mountain View Senior Center (938-2104) unless otherwise noted. Please call to confirm dates and times in case there has been a change to the submitted information.



### Abbreviation Key

BBC-Bradford Baptist Church  
 BML-Brown Memorial Library  
 FGC-Fish & Game Clubhouse  
 Gillingham Drive  
 KAP-Kearsarge Area Preschool  
 KRES-Bradford Elemen. School  
 MVSC-Mountain View Senior Ctr  
 TH-Bradford Town Hall  
 ZBA-Zoning Board of Adjust.

## Area Events

### Sutton

#### THE SUNAPEE-RAGGED-KEARSARGE GREENWAY COALITION

NEW LONDON, N.H. – The Coalition is once again leading a series of exciting winter hikes in the Lake Sunapee region. The hikes are free and open to all.

The hikes, easy to difficult, offer a variety of terrain and conditions, and will include snowshoe and cross-country ski events. A special feature again this year will be a moonlight snowshoe hike over a forgiving three-mile course.

The hikes:

January 15, 2011 A SNOWSHOE TOUR THROUGH Sunapee's Webb Woods, part of the Greenway's Trail 2. Ron Wyman, 763-5822. 3.4 miles, easy.

January 22 , X COUNTRY SKI to Springfield's Morgan Pond from Twin Lake Villa. Call Andy Hager, 526-2846. 5 miles, moderate for experienced skiers.

January 29 SNOWSHOE OR X-C HIKE over trails in Wilmot's Patterson Road area. Refreshments afterward. Brian Faughnan, 526-7838. 3 miles, moderate.

**Musterfield Farm, Kezar Lake North Sutton**, January 23, 2011, from 9 a.m. until the ice is in. Volunteers will cut out ice blocks and deliver them up the road to Muster Field Farm, where they are packed in sawdust in the Watters Ice House for the farm's summer events. Enjoy homemade soups and snacks in the farm's Ryder Corner School House. Pete Lauridsen and friends will display antique cars converted to snowmobiles at Horse Beach, and the Sutton Ridgerunners will stage an Ice Day ride-in for all area snowmobilers. Free admission (donations appreciated). Rain date: January 30. Info and directions: 926-4276 or [www.musterfield-farm.com](http://www.musterfield-farm.com).

Warm up beforehand at the annual pancake breakfast sponsored by the Sutton Historical Society in North Sutton's Free Will Baptist Church, from 7:00 to 10:00 a.m. All you can eat, plain or blueberry pancakes, sausage, French toast, orange juice, coffee, tea, hot chocolate. \$5.00 for adults, \$2.50 for kids. A \$1.00 discount if you come by snowmobile, x-c skis or snowshoes. Rain date: January 30.

### Warner

#### Kearsarge Area Eat Local

Everyone Welcome!!

**January 5** - Wednesday - Monthly KAEL meeting, 7 PM, Pillsbury Free Library - Newcomers welcome.

**January 14** - Friday - Film: TAPPED: The Story of Bottled Water 7 PM, Pillsbury Free Library. Donations accepted. January 20 - Thursday – Farmer Presentation by Marc Moran, Hopewell Farm, Newbury: "Fish Farming, Permaculture and Homesteading in the 21st Century" 7 PM, Pillsbury Free Library. Free.

**January 22** - Saturday - Warner Town Hall, 6-7:30 PM. Community Potluck Supper, Bring a dish to share; local ingredients encouraged!! Free.

7:30 PM-- Contra dance featuring nationally known "Two Fiddles," Dudley and Jackie Laufman, from Canterbury, NH. \$7 donation to musicians. Events co-sponsored by KAEL, Warner Area Farmers Market, Pillsbury Free Library, Warner Connects, Warner Time Bank, Warner Energy Committee, MainStreet Bookends. Call the Pillsbury Free Library at 456-2289 for further information.

## Ongoing Events

Bradford Barter-2nd Saturday at 10AM at BACC/call 938-2777 for info

Children's Storytime-Wednesdays at 10:30AM at BML

Cemetery Commission-2nd Thursday at 6PM/Call 938-5539 for info

Conservation Commission-3rd Tuesday at 7PM, Town Hall or BML

Fish and Game Club-1st Monday 7PM at Fish and Game Club

First Friday Bunch-11:30AM at MVSC, reservations appreciated/call 938-2104 for info

Historical Society-open most Saturdays 1:30-3 PM or call 938-5386

Library Trustees-1st Wednesday at 6:00PM @ BML

Planning Board -2nd and 4th Tuesday at 7PM, Town Hall

Rural Heritage Connection-2nd Monday, 7PM, BACC

Selectmen's Meeting-1st and 3rd Tuesday, 5:30PM, Town Hall

Zoning Board-1st Tuesday, 7:30PM, Town Hall



Bradford Bridge January 2011

*LCHIP - continued from p. 1*

area), joined forces with the Ausbon Sargent Land Preservation Trust to form the Battles Farm Conservation Alliance. Their object was to purchase a conservation easement on the approximately 143 acres of open land, forestland, riverine habitat and associated wetlands [see article on conservation easements elsewhere in this issue.]

The easement restricts the owners' uses of the land and ability to subdivide the property. The monetary value of a conservation easement of this type, which is determined by a certified appraiser, represents the reduction in resale value of the land with the easement in place.

The easement will be written to allow public access for non-motorized recreation and hunting will be allowed in the non-agricultural areas. The easement will protect the important agricultural soils and will allow forestry and agricultural operations that use best management practices. The mile of Hoyt Brook that winds through the property will be protected and the flood plain (which helps reduce flooding downstream at the junction of Routes 103/114) will be maintained. The famous views from Center Road will be kept open. There will be no further subdivision of the property. The buildings and approximately three acres will be excluded from the easement. This will allow for flexibility to use the buildings in ways that may help support a farm, such as a commercial kitchen or a bed and breakfast. But the buildings and this area cannot be sold separately and the existing two lots of record cannot be sold independently of each other.

Before the LCHIP grant can be accepted, 'due diligence' materials must be gathered, just as with



## First Baptist Church News

by Lynne Hubley

**Bible Study:** We have a Thursday morning Bible study that meets every Thursday at 10:00 a.m. We will also be offering "Discipleship" studies --(basics of the Christian faith) beginning in January and lasting 8 weeks. The studies will be held Tuesday mornings and Wednesday evenings. Exact starting date and times will be announced later.

**Focus Factor** (Youth groups grades 6-12) Focus Factor will meet the following Sundays from 4:00 - 5:30 p.m. at the church: January 9 (New Year Kickoff Party -- games, food and fun. Youth are invited to bring their favorite board game and a favorite food item) January 15 - 17 (Winter Retreat --more information to come); January 23 (Bring a friend --get a prize for even inviting 1 friend); January 30 (Ice Cream Sundae Party).

**Food Pantry:** The January distribution date for the food pantry is Wednesday, January 19 from 5:30 - 6:30 p.m. Food can also be obtained by calling the church office at 938-5313.

**Men's Fellowship:** Men will meet at the home of Fred Hubley on Wednesday, January 26 from 5:30 - 6:30 p.m. for prayer, pool and refreshments.



any land transaction. There is additional money to be raised and more fundraising information will follow.

Many years in the planning, this project would not have been possible without the determination of Nita (Battles) Erickson and Ed Erickson to preserve this

farmland for future generations. The professional leadership of the Ausbon Sargent Land Preservation Trust was critical to the project's success as was the generous support of those who, even in these hard economic times, generously answered the request for pledged leadership donations. This outpouring of support convinced the grant-making organizations that this is indeed a landscape of great importance to the town and region.

Thanks to the efforts of so many, this farm will continue to be a landmark in the town in the years to come.

## Bradford Police Department Report

On Christmas morning at approximately 4:45AM Bradford Police and Fire Department personnel were called to a report of a fire on Breezy Hill Road in Bradford. The fire was located in the yard of Student Transportation of America, operating as *Goffstown Trucking Corporation*. Upon arrival, personnel observed approximately 30 school buses parked in three rows in the rear parking lot. At the time a number of school buses were involved in fire. Police gained entrance into the office and secured keys so that fire personnel could move buses not involved away from the burning buses.

Fire destroyed nine buses and six other buses were damaged to varying degrees. At least four (4) buses were saved by being moved and others through fire suppression. Video was in use and has been reviewed. At this time a

general area of origin has been determined and the cause is currently under investigation.

The Bradford Fire Department was assisted by Warner, Hillsborough, Henniker, Newbury, and Sutton Fire Departments. The New Hampshire Fire Marshall's Office, Bradford Police Department, and Bradford Fire Department continue to work on the investigation.

Gary Snair, General Manager for Goffstown Trucking, advised that there is a contingency in place and that over the next week, the bus company will coordinate with the Kearsarge Superintendent's Office and the New Hampshire Department of Safety so that there is will be transportation available as usual by the time school resumes.

## HENNIKER VETERINARY HOSPITAL, PA

Small Animal & Equine Practice  
Alyssa J. Brust D.V.M.  
Robert A. Brust D.V.M.  
Jill R. Patronagio D.V.M.  
Freya Moscovitz, V.M.D.  
Amy C. Jones D.V.M.

24 Hour  
Emergency Service

House Calls Available

Henniker,  
New Hampshire

603-428-3441



Lake Sunapee Region VNA (Merrimack and Sullivan counties) announces that Kulli Bloom has joined their agency as Program Manager of Community Health Services. Ms. Bloom will oversee the non-medical services offered by LSRVNA including personal care, homemaker companions and home safety.



**BUBBA HERE :** Alright!!! The New Year's lights are up. The ski season is in full swing thanks to the recent storm...the college kids are home for a few more weeks (seems to me for what we're paying they could stay at school a little longer)...and the Holiday Season is still cranking Great time of year to get out...do a little outdoor exercise.... visit with family....and invite a friend to LUNCH! We're open everyday from 11:30am 'til 9:00pm!

January's Line up:...

- 1/6....Pete Merrigan and The shrimp Buffet
- 1/13....Smooth Duo and Italian Night Cuisine
- 1/20...Annie Law and The Shrimp Buffet
- 1/27...Pete Merrigan and Mexican Night Cuisine

### MENU SUGGESTION

Sauteed Scallops or Chicken in a Maple Cream sauce  
in a Baked Acorn Squash half!  
Soups, chowders, stews and chili in our Home baked Bread Boules  
Sauteed Lump Crab Cakes!

**Bubba's Catering is available for all occasions!**

603-763-3290 976, Rt 103, Newbury, NH [bubbahmplt@tds.net](mailto:bubbahmplt@tds.net)  
[bubbabarandgrille.com](http://bubbabarandgrille.com)

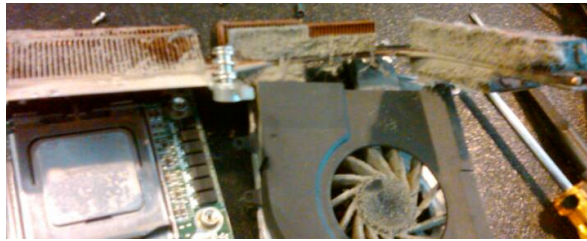
### Computer Column

#### I've cleaned up unwanted programs and processes on my laptop but it is still running hot. What could be causing this?

If, after going through the routine check up items such as cleaning up unwanted programs, shutting down unnecessary processes, and running a hard disk defrag, if necessary, you find that your laptop is still running sluggish and warm it's time to check the fan. Does your fan run almost constantly? Does your keyboard feel warm? If so the exhaust fins around your fan may be plugged.

In the first picture you can see that the heat sink fins are completely plugged from the inside. Blowing with a can of compressed air will not clean out the fins - it will simply push the debris back into the laptop. This happens when the laptop cool air intake on the bottom of the machine pulls in debris and tries to push it back out across the heat sink creating a wall much like the lint trap in your dryer.

Some laptop models allow for easy access, removal and cleaning of the fan components with the removal of only a few screws. Sadly most require a time consuming disassembly of the laptop.



The second picture shows the clean heat sink fins ready to be reassembled into the laptop.



How can I avoid having to have this cleaning done?

Provide the laptop with a clean environment away from things such as pet hair, soot and smoke from the chimney, or cigarette smoke. Also be sure to clean the back area of your desk where your laptop sits to be sure there isn't a covering of dust just waiting to be pulled in by the laptop fans. Simple work area cleaning is the easiest way to help keep your computer equipment running cool and efficiently. As always if you have questions feel free to contact me. . . .

James Thompson [contact.us@iamnow.net](mailto:contact.us@iamnow.net).

### TOWN OF BRADFORD, NH Request for Qualifications

The Town of Bradford, NH Board of Selectmen requests a Statement of Qualifications and Technical Proposals from qualified engineering firms for professional engineering and related services associated with approximately 1650 linear feet of sidewalk improvements along East Main Street.

This is a Transportation Enhancement project funded by the New Hampshire Department of Transportation (NHDOT) through the Intermodal Surface Transportation Efficiency Act of 1991. Preliminary requirements are based on studies performed by the Town of Bradford Board of Selectmen and Town Sidewalk Committee

The engineering responsibilities may include but are not limited to:

Preliminary design services including survey, right of way plans, preliminary design and layout, cost estimate, environmental review and documentation, and participation in public meetings; Final design services including final design plans, right of way plans, preparing and submitting necessary permits, contract documents, and assisting with the bidding process; Assisting the town with meeting all applicable state and federal requirements and providing all required documentation to NHDOT;

*Continued on p. 16*



**1-888-CALL-TDS**

[www.tdstelecom.com](http://www.tdstelecom.com)

PHONE • BROADBAND • DIGITAL TV

53241/4-07/3843



**YOUR COMMUNITY BOOKSTORE AND GALLERY**

Named "Editor's Pick" Bookstore by YANKEE Magazine

**Great Books & Toys • Games for All Ages**

16 East Main Street

[info@mainstreetbookends.com](mailto:info@mainstreetbookends.com)

**OPEN Tues - Sunday 9 am to 6 pm • 456-2700**

*Something Wonderful is Happening in Warner*

## A Culinarian's Column

by Caryl Walker

What to write for January after a month of sumptuous eating. I was in a quandary. So I asked at coffee hour. SOUP! This is for you, Judy, "soup with meat". I hope Tom will enjoy this as much as I do

**Lentil and Kielbasa Soup**

2 tablespoons vegetable oil  
 1 lb. Kielbasa or Knockwurst, sliced ¼ inch thick  
 2 carrots, peeled and finely chopped  
 1 large yellow, finely chopped  
 1 medium-size stalk celery, finely chopped  
 1 large clove garlic, minced  
 ¼ cup minced parsley  
 1 14.5 oz. can diced tomatoes  
 1 ¼ cups dried lentils, sorted and rinsed  
 3 cups beef broth  
 1 cup water  
 1 bay leaf  
 ½ teaspoon salt  
 1/8 teaspoon black pepper

In a 4-quart saucepan heat the oil over moderate heat for 1 minute. Add the kielbasa and brown lightly, stirring occasionally for 5 minutes. Drain on paper towel. Remove all but 1 tablespoon fat from pan.

In the same pan, **sweat** the vegetables over med-low heat until the onion is tender—about 5 minutes.

Add the garlic, parsley, tomatoes, lentils, broth, water, bay leaf, and kielbasa, and bring to a simmer. Reduce heat to low, partially cover, and cook for 40 minutes or until lentils are tender. Discard bay leaf. Season with salt and pepper. Serves 4-6.

Notes:

1. To sweat means to cook in a small amount of fat, without browning.
2. I often add some greens (spinach, Swiss chard, kale) in the last 15 minutes of cooking.

*Happy New Year!*

Bradford Business  
Association News

The Bradford Business Association celebrated the holidays with a potluck dinner and meeting at the Candlelite Inn on Wednesday, December 8th. Thank you to Les and Marilyn Gordon for hosting. Plans for 2011 were discussed, including a winter event in early March with a bonfire and snowman building contest, details to follow. The new brochure is out and distributed throughout town, please pick one up as a quick reference as it also has a handy street map. Renewal applications will go out this month and new members are always welcome at any time! Best wishes for 2011 and please continue to support your local businesses.

Thanks and happy holidays,

Laura

Laura Hallahan, Associate Broker  
[Tall Pines Realty](#)

**Hallahan Award**

Laura Hallahan receives the Realtor of the Year Award for New Hampshire from National Association of Realtors President Vicki Cox in New Orleans on November 5

<b>Bradford Pizza Chef</b> 938 - 2600		
We Serve.....		
From 10am - 1pm 1 Medium Coffee or 1 Small Fountain Drink <b>Free!</b> <small>With purchase of any food item</small>	Lunch Specials Pastas Ice Cream Beer & Wine	Dinners Salads And more! Order In To Go or Call Ahead
Located at the corner of Route 103 and Main Street ~ Bradford, NH		



### SUPPORT GROUPS

Support groups are open to the public and offered at no charge.

Please register in advance.

It is also suggested you call before arriving to confirm that a particular session has not been changed or canceled.

#### PARENT-CHILD PROGRAM

Every Wednesday, 9:00-11:00 a.m.

September – May (runs on school year calendar)

St. Andrew's Church, 52 Gould Road, New London

#### WIDOW TO WIDOW SUPPORT GROUP

1st Monday of the month

10:00 a.m. – 12:00 p.m.

Lake Sunapee Region VNA, 107 Newport Road, New London

#### CAREGIVER SUPPORT GROUP

1st Thursday of the month

1:00 – 2:30 p.m.

Lake Sunapee Region VNA, 107 Newport Road, New London

#### Bereavement Support Groups \*

"Handing the Holidays After You've Had a Loss"

To be scheduled November/December 2010

"Growing Through Grief"

To be scheduled

[\* These programs are offered periodically each year.]

Call Meg Ames to register and for additional information.

603-526-4077

*RFQ* (continued from pg 14)

The Town of Bradford expects to have a consultant under Agreement by March 2011. Construction of the project is expected to begin in the Spring of 2012.

Consultant selection will be based on:

Qualifications of the project manager and project team;  
Experience with similar projects;  
Familiarity and understanding of the project;  
Project approach;  
Ability to meet the proposed project schedule;  
Ability to assure project consistency if changes in the staff of the engineering firm should occur;  
Familiarity with applicable regulations and the Transportation Enhancement program.

A mandatory pre-proposal meeting will be held on Wednesday, January 5th, 2011 at 10:00 a.m. at Bradford Town Hall. All questions about the project will be addressed at that time. Firms not in attendance at the pre-proposal meeting will not be considered for selection.

This is an equal opportunity/affirmative action agency. All qualified proposals will receive consideration without regard to race, color, creed, age, sex or national origin.

The Statement of Qualifications and Technical Proposal shall be limited to 15 pages, including the cover letter and professional resumes. Submit three (3) copies of Statement of Qualifications and Technical Proposal before 12:00 noon on Thursday, January 20th, 2011 to: *Continued on p. 18*

### **Belanger Roofing**

Painting, Roof Shoveling

Roof and Home Repairs

Serving Bradford for 17 Years

Call John, 938-2858

EPA Lead Certified



Thank you Massasecum high speed customers!  
IAMNet is pleased to announce high speed offerings in South Newbury areas of Longview, Red House, Old Province, Hearthstone, Meadow, E. Ridge and Bartlett Roads this fall. Contact us for more information.

101 E. Main St Bradford  
IAMService@iamnow.net

www.iamnow.net

**938-2127**





## Library Lantern

by Meg Fearnley

The library would like to thank the Bradford-Newbury-Sutton Women's Club for organizing a stellar visit with Santa. We enjoyed a really festive evening here with 110 visitors who came to see Santa. What a lovely scene on the library lawn with Cover Girl the miniature horse munching the grass, children singing carols and our small but beautiful tree!

January at the library kicks off with the Library Book Group on January 5 at 7pm. We will discuss *A Patchwork Planet* by Anne Tyler. The next discussion is of *A Summons to Memphis* by Peter Taylor on Wednesday, February 9 at 7pm. Please join us!

On Friday, January 7 at 7pm, we will compare Temple Grandin's book *Thinking in Pictures* with the movie biography of her life *Temple Grandin*. Next, we read the short story "Stage to Lordsburg" by Ernest Haycox and compare it to the movie *Stagecoach* on Friday, February 4. Multiple copies of the book group and book-to-movie titles are always available at the library.

The International Movie on January 21 at 7pm is from Vietnam. In February we will watch a movie made in Canada about Korean immigrants to that country.

The library will be open January 17 on Martin Luther King Day.

Some of the new books added to your library in December:

### For Adults

*The Distant Hours* / Kate Morton  
*An Object of Beauty* / Steve Martin  
*Port Mortuary* / Patricia Cornwell  
*Indulgence In Death* / J.D. Robb  
*Cleopatra* / By Stacy Schiff  
*Half a Life* / Darin Strauss



### For Children

*Mockingbird* / Kathryn Erskine  
*Halo* / Alexandra Adornetto  
*Waves* / Sharon Dogar  
*Diary of a Wimpy Kid: The Ugly Truth* / Jeff Kinney

**Bradford Dental Associates**  
 79 West Main Street  
 Bradford, N.H. 03221



Rolf Knudson, DMD



Caring and Affordable Denistry  
 Call 938 - 2688 for an appointment



**Garry Kalajian**

Artist  
**Blacksmith**  
*Handforged Hardware &  
 Home Accessories*

267 Forest Street  
 Bradford, N.H. 03221  
 603.938.2602  
 www.araratforge.com

**TAKE-A-BREAK**  
*Interior and Exterior Painting*  
 Free Estimates  
 Fully Insured  
 Jay Hinnendael  
 456-3396

Step Up to our Upper Level  
 for Wall Organizing Ideas  
 "We'll Get You Hooked"

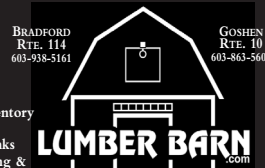


**True Value**  
 START RIGHT. START HERE.™

As Always...Building Materials  
 Delivered for FREE!

DID YOU KNOW?

- We have Computer Color Matching
- We Cut Keys
- We Cut Glass
- We'll Handle Your Special Orders
- We have a Full Inventory of Rough Lumber
- We fill Propane Tanks
- We have Landscaping & Gardening Materials



INTRODUCING OUR SMALL PROJECTS DIVISION



PO Box 456 Bradford, NH 03221  
 603-938-2069

WWW.BRUSSCONSTRUCTION.COM

25 YEARS OF BUILDING GREEN

# Home.

## Helping you stay there.

Skilled Nursing & Therapy  
Personal Care  
Hospice

603.526.4077



Lake Sunapee Region VNA & HOSPICE

*Your Health, Your Home, Our Care*

107 Newport Road • New London, NH 03257

[www.lakesunapeevna.org](http://www.lakesunapeevna.org)

RFQ (continued from pg 16)

Selectmen's Office  
Town of Bradford  
75 West Main Street  
P.O. Box 436  
Bradford, NH 03221  
603-938-5900 ext 3

Proposals received after this deadline shall be considered as non-responsive and shall not be given consideration.

The top ranking firm will be invited to negotiate a contract with the Town of Bradford. Should the Town and Consultant not be able to reach an agreement, the Town will then negotiate with the second highest ranking firm. The Town reserves the right to discontinue the selection process at any time prior to awarding the contract. There will be no reimbursement to any candidate firm if the selection process is terminated.

This Request for Qualifications (RFQ) does not commit the Town to award a contract, to pay any costs incurred in the preparation of a response to this request, or to procure or contract for services and supplies. Costs incurred for the preparation of the proposal in response to this RFQ shall be the sole responsibility of the firm submitting the proposal. The Town reserves the right to reject any or all Proposals, to waive technical or legal deficiencies, to cancel in part or in its entirety this RFQ, and to accept any proposal that it may deem in the best interest of the Town.

The Town reserves the right to undertake such investigation as it deems necessary to verify the qualification of the firm for this project.

Don't Forget!

KRSD Annual Meeting - First Session  
(deliberative)  
Saturday January 8, 2011 9:00 AM  
Kearsarge Regional High School

**The Appleseed Restaurant and Catering We're Affordable!**

Tuesday - Sunday, 5:00 - 9:00 pm and Sunday Morning from 9:00 am - Noon.

Try our award winning \$9.99 Sunday Breakfast Buffet overlooking Lake Todd

Great for those hungry visitors and the kids back from college

Now open for lunch Thursdays through Saturdays

Check out our restaurant at  
[www.appleseedrestaurant.com](http://www.appleseedrestaurant.com)

938-2100

# Outside

by J. Ann Eldridge

Opossum – from the Algonquian word ‘aposoum’ – meaning ‘white beast’.

Three hundred words for an animal with fifty teeth. Plentiful teeth prepared to eat anything organic, flat feet with rear opposable thumbs, and a scaly, nearly prehensile tail to support a semi-arboreal omnivorous lifestyle.

Possum appeared in NH by the 1960s on a slow migration from South America. They are, sadly, North America’s only marsupial. A marsupial, you will recall, is an animal whose tiny newborns find their way to that comforting mobile home pouch wherein they travel for three or four months. Possums have remarkably robust immune systems, including partial or total immunity to the venom of pit vipers - not a northern requirement. They are eight times less likely to carry rabies than our wild canids. Hissing and snapping if they must, they are more likely to faint dead away if alarmed. This quirk works well with their traditional predators but not with cars.

Some prefer to close the door on newcomers, but possums are members of a family of mammals that were

familiar with dinosaurs. They claim planetary seniority.

Solitary, nocturnal and nomadic, yet for all their successful and bizarre habits one other remarkable feature is the speed with which they die. Rarely do they reach the age of two. Mysteriously, senescence is rapid.



Long of snout, their unruly pale fur is ill-suited for NH and they frequently lose parts of ears, toes and tail to frostbite. This adds up to an animal that distressingly resembles a large pale rat.

Why should we care about possums or any other wildlife? It is becoming evident that a diversity of flora and fauna dampens the ability of pathogens to spread. The possum for instance, can destroy 5000 black-legged ticks (deer ticks) in a season and few of the survivors will be infected with Lyme disease. Mice, on

the other hand, manage to remove very few of their tick parasites and spread Lyme easily.

One last thing. Researchers are finding that possums do better on some intelligence tests than dogs. .



We may no longer be called Cobble Pond but  
OUR FABULOUS INDIAN FOOD is still here! TAKE OUT  
ON WEDNESDAY AND FRIDAY

## Bradford Market

Groceries - Indian Spices & Indian and Eat Dishes - ATM  
- Beer & Wine Lottery Tickets - Gifts - Sodas - Snacks  
- Copy Machine - Coffee - Sandwiches - Auto Supplies -  
Toys - Magazines & Newspapers - Video Rentals

OPEN SEVEN DAYS - 6 am- 10 pm

Route 103      938-2662      Bradford, N.H.

*Serving Bradford  
with a community bank tradition*

**Full-Service Banking • 24-Hour ATM  
Drive-Up • Free Online Banking and Billpay**



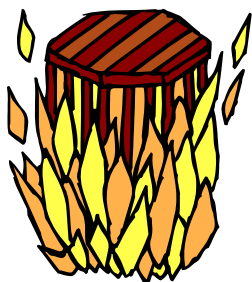
**LAKE  
SUNAPEE  
BANK** fsb  
*the advantage of leadership*

**28 offices including Main Street, Bradford  
938-2277 • www.lakesunbank.com**

Equal Housing Lender • Deposits Insured by the FDIC

### TIPS FROM LOIS ON RECYCLING FIREPLACE ASHES:

- Lightly sprinkle on compost to enrich material.
- De-skunk pets by rubbing a handful of ash into your dog's coat.
- Repel slugs and snails in your garden by evenly spreading ash around flowerbeds.
- Melt ice. Ash adds traction, devices without hurting the soil or concrete.
- Control pond algae; 1 tbs per 1,000 gallons adds enough potassium to strengthen other aquatic plants that compete with algae and slows its growth.
- Pump up tomatoes; the calcium loving plants thrive by placing ¼ cup of ash in the hole during planting.
- Clean fireplace glass doors with a damp sponge dipped into the ash. It scrubs away sooty residue.
- Sprinkle ash on top of snow. Spring rain will wash it into your lawn and produce a super lush spring growth.
- Shine silver. Make a paste with water. Super polish!
- Spread around flowering shrubs for super blooms.



### Classified Ads

Found: three year old +/- male red tiger cat. Neutered. Health checked. Very affectionate and talkative. Indoor inclined cat. To a good home, or his original home. Answers to any name at all. Call 938-5266.

For Sale: 1984 AMC Eagle, 4WD. Was running. Parked outside for 5 yrs. Make an offer, call 938-2911.

### NFI NORTH, INC. THE BRADFORD SCHOOL

Every year, the NFI North Bradford School and NFI North Midway Shelter participate in a six week ski program at Pat's Peak. Our students get a discounted rate to learn how to ski or snowboard from trained instructors and are able to learn a skill they would not otherwise have the opportunity to learn. Even though the cost is reduced, most of our students cannot afford to participate. Therefore, we provide scholarships for those students on a first come, first serve, basis based on the funds we have.

While we fundraiser and solicit donations throughout the year, we are still in need of additional funds to meet the scholarship needs of our students. Donations of any size would be greatly appreciated by the agency, programs, children, and their families. Please help us to provide this opportunity to our students to further develop their confidence and abilities.

Please contact Kristyn Bond at (603) 938-2556 or [kristynbond@nafi.com](mailto:kristynbond@nafi.com) with questions and/or donations.

All of us here at NFI North wish you Happy Holidays!



*NFI North is a non-profit human service organization with programs in Maine and New Hampshire. The Midway Shelter is a therapeutic residential program that serves adolescent males 11-17. The Bradford School is a special education day school with children in 6th-12th grade. By accepting this donation, NAFI/NFI certifies that you received no tangible benefit, goods, or services and this donation will not be used by us to satisfy the payment of any pledge or other personal financial obligation on your behalf. Your donation is a tax-deductible contribution to the North American Family Institute (Federal ID # 04-3161042)*