



THE Bradford Bridge

COMMUNITY NEWS FOR NEIGHBORS BY NEIGHBORS

Volume 20, Number 11; Issue 220

November 2009

A Fun-Filled Day for the Whole Family

There will be a scavenger hunt with free prizes and food and a Harvest Fair on Saturday, Nov. 14 sponsored by the Bradford's Safe Routes to School Task Force and the Bradford Area Community Center.

The Harvest Fair, to be held inside the Community Center from 10:00 am – 2:00 pm at the Community Center, is a celebration of the last day for people to pick up local food and crafts at the Farmers Market. More than a dozen vendors have been invited to participate. *The Bradford Bog*, a husband and wife fiddling duo, will also be on hand to play music for the celebration. Celebrity guests from the Boston Bruins and WMUR-TV have been invited and will be on hand to meet community members. More details later about who will be attending from these organizations.

The event will also be the community kickoff for Bradford's "Safe Routes to School" project at Kearsarge Regional Elementary School at Bradford. The project begins with a scavenger hunt to highlight walking as a healthy transportation option for families. The scavenger hunt will be from 11am-2:15pm and the celebrities on hand will be addressing the crowd at 2:30pm at the Community Center.

Families are encouraged to participate by checking in at the Community Center to get their scavenger hunt maps and meet with the celebrities on hand.

The Scavenger Hunt has 10 stations with cider and snacks available at the Town Hall station. Children who go to each of the scavenger hunt stations can then turn in their map at "Safe Routes to School" station at the community center and get a bicycle-related prize from local bike shops. They will also be entered into a drawing for one grand prize.

The "Safe Routes to School" project encourages kids to be more healthy and active by walking and bicycling to school. Safe Routes to School is important because it helps community members come together around the comprehensive planning principles known as the 5 E's – Encouragement, Education, Evaluation, Enforcement and Engineering.

"Safe Routes to School" addresses the childhood obesity epidemic in the United States by helping children increase their physical activity levels by doing simple things like walking and bicycling to school. "Safe Routes to School" provides 100 % federal reimbursement grants to communities and schools to make it safe and fun to bicycle and walk to school. Children who are more physically active are more self-confident, more alert in school and are healthier overall.

The Bradford "Safe Routes to School" task force is also looking for volunteers for its projects. The next meeting is Nov. 5, 3:30 pm at the town hall. For more information about the events and "Safe Routes to School", please contact Nik Coates at 226-6020 or ncoates@cnhrpc.org.

10 Questions:

by Phyllis Wilcox

This month our series will focus on NFI North, Inc., Midway Shelter and its Program Director, Michelle Galligan. We felt this was a timely article since many youth services have been cut and this shelter provides service to boys between the ages of 11 and 17 years. The shelter's mission is to provide a safe, healthy place for New Hampshire's teens to find shelter and growth. The average stay is 26 days with the provision of an extension of up to 60 days when circumstances call for more time.

Michelle Galligan was born in Cape Cod. She attended Springfield College and then New England College for her Masters Degree in Organizational Management and leadership. She is the mother of six children and brings a background in human services to her position. She has been on the job for only five weeks but has a sincere commitment to her work with youth in need of a safe environment for a limited period of time.

Q. Your background involving working with children and young adults appears to be a natural for your position as NFI's program director. Why did you choose this line of work and how many years has it been your vocation?

"NFI "is the acronym for" North America Family Institute." My original career choice was the law. I took some elective courses in human services and it changed the course of my educational aims.

continued on page 8

The Bradford Bridge



P.O. Box 463
Bradford, NH 03221
Ph.: 603-938-2692
contact.us@bradfordbridge.com
VOLUNTEER STAFF:

Marcia Keller, November Editor
Maureen O'Keefe, Treasurer, Ad Rep
Marion Hall, Subscriptions & Distribu-
tion
Dick & Marcia Keller, Distribution
Andrea & Phil LaMoreaux, Distribution
Sandy Richard, Carey Rodd, Layout

ADVISORY BOARD

Harriett Douglass, Marion Hall, Mary
Keegan-Dayton, Marcia Keller, Beth
Rodd, Audrey V. Sylvester, Phyllis
Wilcox

Printed by RC Brayshaw & Co., Inc.

Subscription Information

To receive The Bridge by mail, please send an
\$20 check to cover mailing costs to the above
address.

Advertising

The Bradford Bridge is a free community
newspaper supported by advertisers. To place
an ad, call Maureen O'Keefe at 938-2941. Ad
deadline is the 15th of the month.

Submissions

The Bradford Bridge is written by neighbors, for
neighbors. Anyone is welcome to submit articles
and/or photographs of interest to the commu-
nity. We reserve the right to edit submissions.

Selectmen's Office Hours

938-5900

Mon-Weds-Thurs: 7:30 am-12 n

1 pm - 5 pm

Tuesday 7:30 am-12 n

1 pm - 7 pm

Selectmen meet 1st and 3rd

Tuesday of each month at 5:30 pm

Town Clerk/ Tax Collector

Office Hours

938-2288

Monday: noon - 7 PM

Tuesday: 7am -11:30 am

12:30 pm - 5 pm

Circuit Rider

Wednesday - call 938-2253

for appointment

Friday - all offices closed

Letter from the Editor

Nothing is as constant in our New Hampshire weather than change and that has been the situation in October – lovely, warm, sunny days, cold and rainy, the first deep frost, and even a few white flakes. Change is also evident in Bradford. Visit the town hall, if you have not been there recently. Admire the smoother surface of the parking lot, enjoy the benches by the front walk carefully crafted by the road crew from the old granite steps (that were not really safe to use), the easily traversed paths that lead to the bulletin board or the flag pole/memorial or to the new, broad, level granite steps by the front door with a welcome bright light over it. A very fine addition to the historic building.

One change that causes some concern is the replacement of Road Agent Steve Lucier. It will take some time for a new person to understand and effectively carry out the many tasks involved with this position.

Other activities that bode well for our town include the organizational meetings of the TIF Advisory Committee; re-activation of the Revolving Loan Fund Committee; activities planned in behalf of the Safe Routes to School program, which seeks to draw together many groups within the community; the grant submitted to LCHIP that might result in preservation of one of Bradford's last remaining working farms; and the application for a Traffic Enhancement grant that could begin the process of revitalizing Bradford's downtown.

Regarding the Traffic Enhancement Grant application, staff at CNHRPC, who reviewed all grants submitted prior to sending them on the NHDOT, described Bradford's as one of the best they had ever seen . . . "a visionary application with foresight that could provide systemic benefits to the town." Now to hear from DOT!!!

An easement on the Battles Farm, the subject of the LCHIP grant, could help to preserve and protect one of Bradford's "Cornerstones". This month's Cornerstone, Bradford Springs, brings back fond memories from my childhood. We visited the spring before the spring house moved to Sutton and I remember my father gathering water from the spring to bring back to Massachusetts for his mother. Whether or not it helped with any medical condition, I have no idea, but it is a special place and Bradford is fortunate to have retained this as a piece of its history.

November - Thanksgiving, and the beginning of the holidays to come. Enjoy time with family, the crafts fairs and other events planned for the season, and look for more positive forward motion in our town.

Marcia Keller, November Editor

Kearsarge Regional School District

by Andrew Pinard

Haunted House

By the time you read this, Halloween will have come and gone. I hope you took the opportunity to visit the annual Haunted House at KRES at Bradford. Organized and run by volunteers, this is a wonderful community event organized by CHIPS that raises funds for programming and equipment at the elementary school. Thanks to all the wonderful volunteers who work so hard to make this happen!

Guitar Club

Mr. Mitchell, the music teacher at Bradford and Simonds has started a Guitar Club that meets after school on Tuesdays until 4:00pm. My daughter attended the first day and the room was full of kids with guitars in a wide variety of conditions. This is another great example of how KRSD staff goes above and beyond to provide opportunities for our children.

“Blizzard Bag”

While it seems too early to talk about blizzards, in an attempt to be proactive about loss of learning opportunities due to snow days (and other school closures), KRSD has developed a pilot program called Kearsarge Extended Learning Network, (KELN) also referred to as the Learning on Line/Blizzard Bag. This pilot program was approved, on a trial basis, by the state of New Hampshire Department of Education and Commissioner of Education, for the 2009-2010 school year. The development of “Blizzard Bags” for each child means that learning opportunities may occur away from school and that students may receive credit for up to three emergency days through Learning on Line/Blizzard Bag. You can find more information about this pioneering program at kearsarge.org

(look on the right-hand side for the falling snowflakes and “KELN”).

Rapid Alert Notification System

If you have a child in the district schools, you may have already received a test phone call from the ALERT NOW system that was instituted for this year. In the event of weather-related delays or school cancellation, parents will not only be notified through our local radio stations and WMUR-TV Channel 9, but will also be contacted directly through an automated message from district offices. Messages will be sent between 5:30 and 6:15am. The “No School” line (526-2051 Ext. 224) will continue to be in effect for those who wish to call in for information.

KRSD Budget

In early October, the School Board approved a proposed 2010-2011 general fund budget to be passed on to the Municipal Budget Committee for consideration. This budget is the result of long hard work by teachers and administrators all striving to meet a goal set by the School Board. Almost all of the schools came in with a zero increase in their proposed 2010-2011 budgets and with the exception of some costs that are mostly outside the district’s control, the budget currently being considered by the Municipal Budget Committee is very lean. We encourage your participation in the develop-

ment of the budget by attending meetings. All budget meetings (with the exception of contract negotiations) are open to the public and the current proposed general fund budget is available online at kearsarge.org.

BAR & GRILLE

Please join us on the harbor for Lunch & Dinner

We're open everyday from 11:30am to 9pm


Rt. 103, Newbury Harbor
603-763-3290

at Newbury Harbor

Bubba's

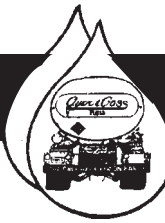
**GOOD EATS
GREAT SPIRITS**

kearsarge.org



Ayer & Goss
FUELS

**24 HOUR SELF SERVICE
GASOLINE & DIESEL PUMPS**



Serving the area's heating needs for more than 60 years
FUEL OILS & LP GAS / COMPLETE HEATING SERVICE

938-5335

Route 114, Bradford • Hall Ave., Henniker . . . 428-3333

Selectmen's Highlights

Transfer Station: Kenneth Anderson presented the selectmen with a request to purchase a new, long-stroke baler to replace one that does not operate effectively. A grant from "NH the Beautiful" is available for part of the cost with the remainder to come from the special revenue fund generated by the sale of recyclable materials. Chair Charles Meany requested a second quote for a comparable baler before making a final decision.

Town Clerk Hours: Ann Lucier discussed concerns about the limited hours that the town clerk's office is open. She suggested that closing the office on Monday and having it open Friday would better serve the public. This is a particular concern when there is a Monday holiday and the office is also closed on that day. Many people are paid at the end of the week and find it preferable to register cars, pay taxes, etc. at that time. Charles Meany said they are aware of the problem and will advise of when action is taken. They are looking into allowing registrations on line as one avenue to alleviate the problem.

Town Hall: Dick Keller complimented the work done at the front of the town hall – the new steps, using the old granite for benches,

and the replacement of the old paving with a pervious surface. Charles Meany said the material is hard pack and will remain until a warrant article is passed to pave the parking lot.

Cheryl Behr read a letter from the First Baptist Church requesting that pot holes in the parking lot at the church be repaired. Selectmen agreed to do this.

Police Department: Police Chief Jim Valiquet asked for guidance in preparing his 2010 budget. Selectmen voted to have 24/7 coverage by the Bradford Police Department. Valiquet will prepare a budget with that in mind. He asked for, and was given, permission to hire Craig Norton, a Norwich student, as a part time officer.

NFI: Town Administrator Cheryl Behr read a letter from the Town Counsel advising that the information received from NFI North failed to support their request for a charitable exemption.

Road Agent: In response to a question from Dick Keller concerning the status of the Road

Agent. Charles Meany advised that the selectmen are not allowed by statute to make any comment on that matter, it being a personnel issue. Asked how the public is to know who is in charge of the department at this time, Meany advised that second in command, James Gove, will be in charge until the position is filled. Deadline for applications for the position of Bradford Road Agent was advertised as of noon on 23 October.

Bement Bridge: Mr. & Mrs. Willard, whose property abuts the Bement covered bridge, expressed concern regarding the noise from vehicles passing over the bridge. Their concern is that replacing the current wooden roof with a metal one could increase the amplification of the noise. Selectman Meany said this would be discussed at the next meeting of the Road Committee.

Planning Board: Cheryl Behr read a letter received from Planning Board Chair Phil LaMoreaux concerning non-compliance with the Zoning Ordinance at property on Route 103 owned by Carolyn

Custom Designed Jewelry

Spirit of New England
Jim Papuga - Goldsmith



Earrings in 14k gold
with diamonds.

STATE JURIED MEMBER OF THE
LEAGUE OF N.H. CRAFTSMEN
By Appointment Only • 938-2901

Step Up to our Upper Level
for Wall Organizing Ideas
"We'll Get You Hooked"

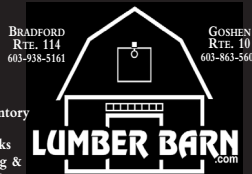


True Value
START RIGHT. START HERE.™

As Always...Building Materials
Delivered for FREE!

DID YOU KNOW?

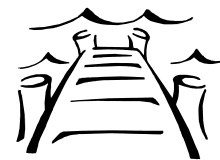
- We have Computer Color Matching
- We Cut Keys
- We Cut Glass
- We'll Handle Your Special Orders
- We have a Full Inventory of Rough Lumber
- We fill Propane Tanks
- We have Landscaping & Gardening Materials



BRADFORD
RTE. 114
603-938-5161

GOSHEN
RTE. 10
603-863-5601

Dockside Hair Design has
moved to Bradford!



Book an appointment with
Jen Critch or Meghan Raymond & receive \$5 off any
chemical service!

Bradford Corners

Route 114

Bradford, NH 03221

Phone: (603) 938-0090

Selectmen’s Highlights

Demers. She has failed to file a site plan for the business operated at that location. Selectmen voted to send her a letter advising her to attend the November 10th meeting of the Planning Board.

Highway Department: The heating system at the highway garage is to be inspected. Selectman Jack Meaney reported that there will not be enough used motor oil from the transfer station to heat the garage this winter. Other sources will be looked into. He reported that a prison crew is working on cutting brush at French’s Park.

Selectmen signed an application for state aid for the next bridge to be replaced. It will be the Breezy Hill Road bridge at the Route 103 end.

LCHIP: Brooks McCandlish and Ann Eldridge updated the selectmen on a possible easement to protect the Battles Farm property. An LCHIP grant has been applied for in the amount of \$195,000 that would help to place a permanent deed restriction on the property.

KRSD: A letter was read into the record that has been sent to Bradford’s School Board representative, Andrew Pinard urging that the school district budget not show any increase over last year. Town departments have been asked to “hold the line” at last year’s level and it is hoped that the school board will do the same.

Minutes of all meetings are on file at the Town Hall and online at bradfordnh.com

Bradford Women’s Club

FAIR! FAIR! FAIR!

Our Annual Holiday Crafts and Antique Fair will be held at:
 St. Peter’s Lodge
 Friday, Nov. 27 9:00 – 3:00 PM,
 Sat., Nov 28 9:00 AM – 3:00 PM
 Sun. Nov. 29 10:00AM – 2:00 PM.

We have over 35 consignors with a wonderful selection of crafts and antiques. Members who haven’t signed up for duties, please contact Elaine Warren. We hope to see you there!

Supervisors of the Checklist

Residents of Bradford are notified that the Supervisors of the Checklist will be in session on Wednesday November 4, 2009 from 7:00pm-7:30pm at the Bradford Town Hall. This will be for the purpose of registering new voters and updating the checklist. Please bring proof of residency and age.

Supervisors of the Checklist
 Ann Lucier
 Judith Marshall
 Ruth Marden



**ATTENTION
 BRADFORD AREA
 SMALL BUSINESSES!**

Lending is available through the Bradford Revolving Loan Fund a program managed by the Capital Regional Development Council

For more information, contact Stephen Heavener at 228-1872 or sheavener@crdc-nh.com



DLG Bookkeeping Services, LLC



I specialize in small and start up businesses. No Job is too small!!!

Let me help you with bank reconciliation, getting ready for tax preparation, maintaining your general ledger, and most of all, paying your vendors in a timely fashion. Call Diane today to make an appointment.



P.O. Box 425, Bradford, N.H. 03221 (603) 848-2482 dgadoury@dlg-bookkeeping.com



VNA | *It's About How You Live!*

November is Hospice Month

We welcome the community to all 2009 events.

Time of Remembrance

Saturday, November 7 • 11:00 am

Tracy Memorial Library, * New London

**Note: This event is not sponsored by Tracy Memorial Library*

Hospice Benefit Dinner

Wednesday, November 18 • 6:00 pm

Millstone Restaurant, New London

(\$50.00 per person)

Craft Fair

Saturday, November 21 • 9 am–2 pm

Kearsarge Community Presbyterian Church, New London

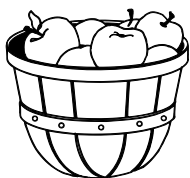
603.526.4077



Lake Sunapee Region VNA & HOSPICE

107 Newport Road • New London, NH 03257

www.lakesunapeevna.org



Deadline for the next edition of the Bradford Bridge is November 15. Submissions after that may not get published.

Bradford Country Squares

The Bradford Country Squares square dance club will host a dance on Saturday, November 21. Early round dancing starts at 7:00 pm and square dancing starts at 7:30 PM, continuing until 10:00 pm. Our caller will be Don Bachelder and our cuer will be Phil Gatchell. This is a Class Level dance and all beginner square dancers are welcome. Admission is \$6.00 for adults, half price for ages 13 to 15 and free for 12 and under.

This is our annual Teddy Bear dance. We are asking for donations of new, unwrapped toys for children. We will pass the toys on to the US Marine Corps for their "Toys for Tots & Teens" program. Even if you are not a dancer, we would be happy to have you drop by with a donation and stay for refreshments and a look at modern square dancing. We might surprise you. Dancing is fun.

The dance will be held at the Kearsarge Regional Elementary School in Bradford on Old Warner Road. *For more information, call Warren Sherburne at 863 - 6394 or Dawn Baker at 456 - 3837.*

We're NOT just another convenience store...
OUR FABULOUS INDIAN FOOD IS BACK! TAKE OUT
ON WEDNESDAY AND FRIDAY

Cobble Pond Farms

Groceries • Indian Spices & Indian Heat and Eat Dishes • ATM
• Beer & Wine Lottery Tickets • Gifts • Sodas • Snacks • Copy
Machine • Coffee • Sandwiches • Auto Supplies • Toys • Maga-
zines & Newspapers • Video Rentals

Rte. 103 OPEN SEVEN DAYS • 6 am–10 pm •

938-2662



Tax Rate set for 2010

Selectmen announce that the tax rate for 2010 will increase by \$.25/\$1,000.00 of assessed valuation. Taxes will be due on December 7th. The breakout is as follows:

| | 2009 | 2010 | Change |
|--------------|----------------|----------------|--------|
| Town | 6.15 | 5.63 | -.52 |
| Local School | 8.45 | 9.09 | +.64 |
| State School | 2.08 | 2.11 | +.03 |
| County | 2.40 | 2.50 | +.10 |
| Total | \$19.08 | \$19.33 | |



Safe Routes to School SCAVENGER HUNT

Sat. Nov. 14 11-2:30pm

**Scavenger hunt, prizes, refreshments
and learn about the sidewalk improvements
planned for Bradford.**

Walk with your children between 11am-2:15pm along Main Street to find the answers to a Safe Routes to School Scavenger Hunt learning some Bradford history along the way. Return to the Community Center at 2:30pm for prizes, refreshments and a short speech. For safety, no unsupervised children please. For more info call Nic Coates at 603-226-6020.

SCAVENGER HUNT FORMS will be available at The Harvest Fair (10am to 2pm) at the Bradford Area Community Center beginning at 10am.

Bradford Area Community Center and Main Street Bradford



WE ARE SELLING HOUSES!



Bradford Sold \$135,000
Our own buyer, too!



Bradford Sold \$188,000



Newbury Sold \$510,000
Our own buyer, too!

938-2366



Located at the Covered Bridge
Ann C. Hallahan, Broker/Owner
www.tallpinesnh.com

Tired of that old beige paper? Try getting the Bridge online and enjoy the pictures in vibrant color. Contact: contact.us@bradfordbridge.com

and we will send you a PDF of the Bridge monthly.

New Bridge e-mail address:

contact.us@bradfordbridge.com

INTRODUCING OUR SMALL PROJECTS DIVISION



PO Box 456 Bradford, NH 03221
603-938-2069

WWW.BRUSSCONSTRUCTION.COM

25 YEARS OF BUILDING GREEN

NFI - continued from page 1

One of my assignments was to work in domestic violence. At that point I seemed to naturally fall into this type of work and have been at it for 12 years plus five years as a volunteer.

Q. The Bradford community has watched NFI grow with interest and curiosity from one or two buildings to a large complex which includes boarding facilities. Can you tell me about the history?

I am not too familiar with all the transitions but in the beginning it was Kelco, a small facility with an educational component run under similar lines as NFI. I believe that the early organization was housed in the Bradford Area Community Center for about eight months until the renovations at Sunshine Farm were completed. Then ownership transitioned to NFI. The original Midway Shelter was in Manchester. I believe that the move to Bradford was a good one since the environment of a rural area is better for the residents.

Q. You were kind enough to allow me access to your resume which appeared to be well suited to your present situation here. When did you realize that you really wanted to advocate for services for children and adolescents?

I started out working with adults with mental illness. Then I worked for Wediko, a facility for young boys. I worked for an Easter Seals facility as a supervisor. My passion is to find foster care and adoption for our young residents who need it. Our aim is to take youngsters out of residential care and give them a home.

Q. What do you think about the lack of a father figure for boys who might have problems?

I absolutely feel that there is a correlation between those boys who do not have a father or a mother as a role model and behavioral issues. The absence of a father or mother changes the dynamics of upbringing. About 60 percent of



the boys here have no dad or minimal contact. The average stay is 26 days but as I mentioned before, we do have extension options due to circumstances.

Q. I understand that NFI has a Board of Advisors and that members of the area community are invited to join. Can you tell me about the qualifications for this board? In what ways does the board contribute? How often do they meet?

Anyone dedicated to wanting to help and see adolescents get a change is welcome to join our board. They bring different skills and strengths. We have five members now. They contribute by building community relations. We meet every three months at the facility and are welcoming to new board members.

Q. Would it be possible to talk about the goals at NFI and to elaborate on a case history without breaching confidentiality? What is your success rate?

Our goal is family reunification whenever possible. The Juvenile Parole Officer makes the final decision based on our input. We give them assessments... We try to make things as normal as possible. Our mission statement includes the utilization of a normative culture which is educational, supportive and therapeutic. We try to be more like a boarding school. An example I can give you is a student who came in because his parents are now homeless. Unfortunately, he will be going to a long term facility. Most of the boys come here because of delinquency, a minor crime or because their parents cannot control them. Our policy is to try to interact with the family whenever possible. We have family days, but not everyone comes. We have an array of problems here but they are not hard core criminals.

Q. Do you have a good working relationship with our police department? You mentioned that you are not loathe to call them as needed?

I haven't met the police chief as yet. We try to work with the community. We're thinking about having a career day where different people speak about what they do. We are planning some work with the Conservation Commission and doing some work and a walk in the Bradford Bog. The wooden toy maker has worked with our boys and that was a positive experience.

Q. How can the Bradford community contribute to your efforts? Would you outline some of your needs?

Holidays are coming. People with special skills they would like to

share are welcome, similar to Hal Liberty and his wooden toy operation. Or people who like to lead hikes, play sports, arts and crafts and other types of recreation. We could use donations of shoes, scarves, gloves, hats, boots, school supplies and backpacks. We would appreciate a DVD player and a Play Station or X Box. Books and magazines and of course financial donations are very welcome.

Q. I understand that you have six children of your own. It must be difficult to juggle your home life and job. Can you shut your office door and say okay, that's it until tomorrow?

Being a mom is 24/7 and this job is 24/7. I have on call coverage. I like to cook, read, bake and I rescue animals. It is difficult to leave work and not think about it. The state's resources are quite limited with only 45 beds available for our population. I love my job and I care about the outcomes. No, I can't go home and forget it.

Our ten questions were answered but a little more detail is necessary to fill in the goals at NFI. The boys are 11 through 17. There are 15 spaces at the facility which has a special education component. The students arrive with an "IEP" which is a plan for their further education. The school is licensed by the Department of Education. The referrals are court ordered throughout the entire state. The goal is to keep children closer to their families. Funding comes from the state and private sources, There are children who arrive with developmental disabilities. There are 20 staff people and at the present time 13 boys in residence with a capacity for 15. Need more information? Contact Michelle Galligan at 938-5014.

4 H Club



Didn't you hear?

There is a new 4-H club called "High Spirits" in Bradford!

CALLING ALL KIDS... Are you between the ages of 5 and 18? You could experience and learn about the following:

- Rocketry
- Sewing
- Cooking
- Photography
- Outdoor Adventures
- Wildlife
- more to come...

CALLING ALL ADULTS... Our young people deserve the best that their world has to offer. If you can spare 6 hours per year, please consider joining us. Volunteer to help our community's youth develop skills and become better citizens! We are in need of project leaders for the following subjects:

- Forestry
- Aerospace
- Babysitting
- Small engines
- Wind energy
- Science Discovery: whales, water quality, recycling, rocks & minerals

Monthly club meetings are held at the Bradford Area Community Center. Call Marie Hasey for more information @ 938-5538 or email Marie at mhasey@tds.net



**WALCO
MECHANICAL CO.**
REFRIGERATION, HEATING,
AIR CONDITIONING,
ELECTRICAL CONTRACTORS
COMMERCIAL • INDUSTRIAL • RESIDENTIAL
SERVICE • SALES • INSTALLATION
MAINTENANCE PROGRAMS
SYSTEM EVALUATIONS
938-2926

Hugo's Electric, Inc.
Licensed & Insured
RESIDENTIAL • COMMERCIAL
938-5573
3191 State Rte 114, Bradford

**HENNIKER VETERINARY
HOSPITAL, PA**
Small Animal & Equine Practice
Alyssa J. Brust D.V.M.
Robert A. Brust D.V.M.
Jill R. Patronagio D.V.M.
Freya Moscowitz, V.M.D.
Amy C. Jones D.V.M.

24 Hour
Emergency Service

House Calls Available

Henniker,
New Hampshire

603-428-3441



Letters to the Editor

To the Editor:

Life brings many loving and caring surprises in our lives. One came into my life at the Bradford Area Community Center on Saturday afternoon. I found my family and friends ready to celebrate my "80" birthday. It was just awesome! I felt so much love from all who had planned and came to this surprise party. Thank you for the greatest birthday gifts of canned goods and checks for the Bradford Food Pantry. Memories of this celebration will remain in my thoughts forever. God bless you all.

Hugs, Dawn Rich

To The Editor:

The following letter was read to the Bradford selectmen by Rep. Barbara French of Henniker and Bradford:

I understand that the selectmen and our road agent, Steve Lucier, have had their differences and that we have lost our road agent.

As a Lake Massasecum resident for more than 80 years, I'd like you to know that I have appreciated all the hard work and commitment that Steve Lucier has made to our lake.

Specifically – the milfoil situation: Harvesting : recruiting and supervision of the crew boat maintenance.

Net: putting in, removal and care of the net.

Monitoring: keeping on top of any possible spread and removal of the milfoil.

Water level: The lake has a water level drainage problem. Beavers have been a major contributing factor. Steve has been especially diligent in controlling the beavers and, as a consequence, has made a significant contribution in improving the water level.

He has kept our roads well maintained and even removed a boulder on my side of the road that I used for parking. He has been a great contributor to our lake quality and the quality of life on our lake.

I feel he went above and beyond in caring for our lake. I know he worked with the selectmen on this issue and I appreciate it. Thank you.

Sincerely yours,
Barbara C. French

To the Editor,

We, the Bradford Area Community Center Committee, thank Fred Hubley for his many years of support to our community center. Fred joined the committee as the representative of the Kearsarge Area Preschool. His next position was Treasurer of the BACC. Fred used his expertise to apply for and obtain non-profit corporation status from the State of New Hampshire for both KAP and BACC. We will always remember Fred's volunteer dedication to our Community Center and its activities. Thank you, Fred. We wish you the best in your next endeavor. You will be missed by all.

Sincerely,

Ellen Brownson, John Bruss, Kate Dobrowski, Bruce Edwards, Debbie Flinkstrom, Karen Hambleton, Margaret Raymond, Dawn Rich, Ona Ruchti, Bob Stewart, Jim Valiquet, Mary Ann Wright

To The Editor:

We want to recognize the excellent road crew that we have in Bradford. Last month we wrote a quick note about their – and specifically Steve Lucier's – excellent and ingenious work on repairing the West Main Street bridge. Over the last few weeks they have been carrying out major work on repairing drains and patching sidewalks on our end of Main Street.

Too often our public servants only hear complaints. We want to let Steve and his crew know what a good job they have been doing.

John R. and Ruth-Ann Harris
The Brick Mill on West Main

Letter to the Editor,

Just a note to thank the residents of Bradford for allowing me to serve as Road Agent and for your support over the past five and a half years. Also thanks to the men who served on the road crew for their loyal support and hard work. As a result, I personally feel that the roads, bridges, culverts, and ditches, all part of the maintenance program, are left in better condition than they were when I took over.

I tried to carry out what I saw as a reasonable work schedule and complete the many tasks, including maintenance of the equipment, while always keeping the budget in mind. Micro management has its negative effects, however.

Thanks again for your support.

Steve Lucier

From the Bradford Fire Department

We all have them, we probably have never used them, and not many of us really know how to use them. I'm referring to fire extinguishers. This is what the Bradford Fire Department was demonstrating at Family Fun Day on September 19.

The Fire Department decided that holding a fire extinguisher demo was the perfect opportunity to have members from our own community become involved in fire safety, which could possibly save your own life.

In the beginning of the demonstration, the crowd watched members of the Fire Department partake in a training of their own. An old oil drum cut in half held a large fire which the fire fighters took turns extinguishing with a professional sized fire extinguisher.

When it came time for volunteers, many residents seemed leery even to put out a small controlled fire. Was it because the firefighters were dressed in their full turn out gear, protected from the flames and the public was not, or was it simply because they did not know how to operate a fire extinguisher?

There were quite a few residents that took part in learning how to put out a small fire. Some admitted they were either afraid of fire or had no idea how to use a fire extinguisher. Overall the demonstration and the public involvement went very well. The Fire Department hopes to have this training as an annual event.



It is a common misconception that to put out fires that involve flammable liquids is to douse it with water. However, this is not the case. As the fire department demonstrated, when you put water on a fire that involves flammable liquids, it causes the fire to get larger not smaller. Residents should have at least one household fire extinguisher centrally located

in their home, usually in the kitchen. Make sure it is properly rated for that environment.

On behalf of the Bradford Fire Department, we want to thank the members of the community who came to visit us on Family Fun Day.

Melanie Steiz
Bradford Fire & Rescue

Fire Extinguishers

| | |
|--|--|
| <p>A Ordinary Combustibles Paper, wood, cloth, rubber many plastics</p> <p>B Flammable Liquids Oils, gasoline, grease, solvents, and some paints</p> <p>C Energized Electrical Equipment Electrical sources which are still supplied with power</p> <p>K Cooking Oils Vegetable or animals oils or fats</p> | <p>P ull pin from handle</p> <p>A im the extinguisher</p> <p>S queeze the handle</p> <p>S weep from side to side Keep the extinguisher aimed at the base of the fire</p> |
| <p>EMERGENCY DIAL 911 Bradford Fire Department 938-2231</p> | |

Dawn Rich Honored



Bradford neighbors and friends surprised Dawn Rich with an 80th birthday party held at the Bradford Area Community Center. She received gifts of donations to the Bradford Food Pantry. Top photo: Rich family (from L to R) Marvin and Dawn, sons Mike, John and Bob. Daughters Dawn and Donna were unable to attend.

Bradford Events

Bradford Business Association

The Bradford Business Association has been busy attracting new members and planning for the publication of an updated brochure by the end of the year. There is still time to join for \$30.00, so contact Laura Hallahan at 938-2366 for an application. The BBA will be holding a working meeting on *Wednesday, November 11th at 5:00PM* at Tall Pines Realty.

Members and interested parties are welcome to come talk about the brochure and upcoming events. BBA members and any small business owners in the area may also want to come to a meeting re-introducing the Bradford Revolving Loan Fund, a loan program managed by the Capital Regional Development Council that has been in place for years but not promoted. The BRLF has held two meetings already and Executive Director Stephen Heavener will speak about the program on Wednesday, November 18th from 5:00 to 7:00PM at the Candlelite Inn. Appetizers and beverages will be served. Please RSVP to Jayne Rayno at Lake Sunapee Bank via email at jrayno@lakesunbank.com or her direct line is 865-6182.

Mystery Dinner Theatre

"The Case of the Mysterious Stranger" First Baptist Church of Bradford, 88 West Main - Nov. 13 and 14 at 6:00 PM. \$12.50 per person includes a four course roast beef dinner. For information and reservations call 938-5313 by Nov. 10. Proceeds to benefit the church building fund. This event is sponsored by Appleseed Restaurant in Bradford.

The Moose of Humor Coming To Rosewood

On Saturday December 5th, the Rosewood Country Inn in Bradford will host their 15th annual "Christmas Gathering", a holiday dinner with storyteller Rebecca Rule. Best known for her live presentations of humorous New Hampshire stories, Rebecca has entertained audiences from Stratford to Keene, prompting New Hampshire Magazine to name her "Thalia: the Muse of Comedy" in its list of notable New Hampshire muses.

The festive holiday evening begins at 6pm with hors d'oeuvres and cocktails (cash bar), followed by a buffet dinner at 7pm. Reservations should be made in advance by calling the inn at 938-5253. The cost is \$50 pp including tax and gratuity.

Area Events

Sutton

Ausbon Sargent Land Preservation Trust is sponsoring "How To Make Your Town Farm Friendly", Thursday November 12, 2009, 6 – 8:30 pm at the Kearsarge Regional Middle School, North Sutton, NH. Unknowingly, zoning, town ordinances and conservation activities can have an adverse affect on the ability of agriculture businesses to remain viable. Come join this informative workshop presented by Agriculture Educator, Amy Ouellette. The cost is \$10. For more details visit www.ausbonsargent.org.

Warner

The Bradford Bog People will be performing their lively old time fiddle and banjo music at the next area Barn Dance on November 20th, 7:30 to 10 PM at the Warner Town Hall. Lausanne Allen from Bristol, Vermont will be calling the dance.

For more information contact Faith Minton at (603) 456-3098.

Newbury

The Fells Preschooler Art in Nature Program: Paper Making!

Tuesday, November 10, 10-11am Lauren Cole-Johnson leads preschoolers in making homemade paper from dried vegetative matter and recycled newsprint. The third of eight seasonal preschooler programs designed to increase children's awareness of, curiosity about, and appreciation of the natural world. Member child \$2, nonmember child \$5, caregiver free.

Registration required. The Fells Gatehouse, 456 Route 103A, Newbury. For additional information call 603-763-4789 ext. 3 or visit www.thefells.org. The Preschooler Art in Nature Program has been made possible by support from the Lincoln Financial Foundation.

**Ornamental Ironwork by
Garry Kalajian
Artist • Blacksmith**

267 Forest Street
Bradford, N.H. 03221
603.938.2602
www.azazatforge.com



Open Studio November 7-8, 10:00 a.m. to 4:00 p.m.
On-going Blacksmithing Demonstration and Sale of Work

*"Traditional Craftsmanship Faithfully Applied
To Original and Historic Designs"*

Planning Board Notes

Gravel Pit: The continuation of the public hearing for Peter Isham’s gravel pit on Pleasant Valley Road was held following a site walk of the property. Bob Stewart Jr., representing the owner, expressed appreciation for the benefits of the site walk to help everyone understand the revised plan that was presented. Reclamation of the site can begin once the boulders that are stored there have been removed. This will involve crushing of the rock and may include some blasting of the material. The Board reviewed requests for waivers from some of the requirements and approved them as presented.

The Board voted to accept the application and to approve granting the permit, conditional on receipt of a Performance Bond

in the amount of \$8,000 prior to commencement of either removal of material from the site or any crushing or blasting. Mr. Isham requested, and was granted, an extension until April 13, 2010 to meet the condition. The permit will be valid for three years from the date the condition is met.

Updates: The Board reviewed several files to determine whether all conditions have been met. Several checks will be sent to applicants where escrow funds remain; others will be contacted and asked to complete the conditions that were set.

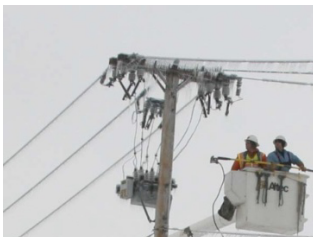
A letter will be forwarded to the selectmen asking them for assistance with an issue of non-compliance for property on Route 103 owned by Carolyn Demers.

Work Sessions: A public hearing on the proposed Sign Ordinance was held on October 27. Also discussed at that session was the budget for 2010 and possible changes to the Zoning Ordinance to meet the requirements of changes in the law dealing with “workforce housing.”

Minutes of all Planning Board meetings are on file at the Town Hall and online at bradfordnh.org.

60’s and 70’s Music Lovers

If you are a singer and/or player of 60’s and 70’s folk and “light rock” music, and would like to get together, please contact Mike at 603-938-2933 in So. Newbury Village. Likewise, please call if you want to learn some of these songs.



Storm Shelter at BACC

We hate to think of scenes such as this now. However, winter will be upon us sooner than we’d like to think.

Come to the Bradford Area Community Center this winter if you have no electricity and need a warm place to stay with food and water. Some food will be provided. However, to be sure there is enough for everyone, feel free to bring your own to cook as well. Check us out before the storm hits so you know you will have a place to stay in an emergency.

BACC
 134 East Main St.
 Bradford, NH 03221
 General Information: BACC
 Administration Office at 938-6228
www.bradfordnh.org
bacc@mcttelecom.com.com



Credits: Beau Dodson, Angela Compton, NWS Staff, and other public sources.

NOVEMBER CALENDAR

Mon. Nov. 2

8:45 AM - Mountain View Senior Center Fitness
 10:00 AM - Ceramics with Doris
 10:30 AM - Yoga with Fran
 1:00 - 4:00 PM - Bridge Group
 5:30 – 7:15 PM – Girl Scouts
 7:00 PM - Bradford Fish & Game meeting - FGC

Tues. Nov. 3

9:00 AM – 12:00 noon - Fuel Assistance – Call
 456-2207 for appointment
 10:00 AM - Stitches From the Heart
 12 Noon - Senior Dining followed by Ellen
 Brownson of LSRVNA with an AARP
 program “Wise up on Meds”
 4:30-5:30 PM - Archery – at Camp Wabasso
 6:00 - 7:30 PM - Yoga Class – call Fran at 456-
 3099 for information

Wed. Nov. 4

3:15 PM – Brownies – Troop 10015
 4:30 PM – Friends of the BACC

Thurs. Nov. 5

12 Noon - Senior Dining
 11:00 AM to 1:00 PM - Foot Care Clinic at Mt.
 View provided by LSRVNA
 3:30 PM - Safe Route to Schools Meeting, TH

Fri. Nov. 6

8:45 AM - Mountain View Senior Center Fitness
 11:30 AM - First Friday Brunch with
 entertainment
 7:00 PM—Book-to-Movie Discussion (*Shane*),
 BML

Sat. Nov. 7

9:00 AM - Writing Group
 9 AM- 2 PM Holiday Bazaar- South Newbury
 Union Church

9AM - 4 PM - Open Studios - Bradford - see p.26
 for details

Mon. Nov. 9

8:45 AM - Mountain View Senior Center Fitness
 10:00 AM - Ceramics with Doris
 10:30 AM - Yoga with Fran
 1:00 -4:00 PM - Bridge Group
 1:00 -4:00 PM - Bridge Group
 7:00 PM - Rural Heritage Connection

Tues. Nov. 10

9AM –12 Noon - Hearing Clinic
 10:00 AM - Stitches from the Heart
 12:00 Noon - Senior Dining and ServiceLink’s
 Anita Oelfke about Medicare
 4:30-5:30 PM - Archery at Camp Wabaso
 6:00 – 7:30 PM - Yoga Class

Wed. Nov. 11

Senior Center closed for Veterans Day
 Library Closed
 4:30 PM - Bradford Area Community Center –
 Committee meeting
 6:00 PM - Parks & Recreation Dept. –meeting
 7:00 PM – Library Book Discussion of *The Road* by
 Cormac McCarthy, BML

Thurs. Nov. 12

10:30AM–12 - Noon Blood Pressure Clinic
 provided by LSRVNA
 12 Noon - Senior Dining
 6:00 PM – TIF Advisory Comm. Organizational
 Meeting - TH

Fri. Nov. 13

8:45 AM - Mountain View Senior Center Fitness
 9:30–11:30 AM - Foot Care Clinic by LSRVNA
 at North Ridge Senior Housing.
 Call for appt. at 526-4077
 6:00 PM - Mystery Dinner Theatre - First
 Baptist Church. Call 938-5313 for
 information

Sat. Nov. 14

10:00 AM – 2:00 PM – Farmer’s Market
 Harvest Day
 11:00 AM – 3:00 PM – Safe Routes to School
 Event
 5:30 - 7:30 PM - Veterans Day Dinner and
 Program Warner Town Hall WWII’s Popular
 Songs -Music Historian Calvin Knickerbocker
 6:00 PM - Mystery Dinner Theatre - First
 Baptist Church. Call 938-5313 for
 information

Sun. Nov. 15

11:15 to 12:30- Flu Clinic United Church of
 Warner provided by Concord VNA

Mon. Nov. 16

8:45 AM - Mountain View Senior Center Fitness
 10:00 AM - Ceramics with Doris
 10:00 AM - Kumihimo (downstairs)
 10:30 AM - Yoga with Fran
 1-4:00 PM - Bridge Group 5:30 – 7:15 PM –
 Girl Scouts

Tues. Nov. 17

9:00 AM -12:00 noon - Fuel Assistance – Call
 456-2207 for appointment
 10:00AM - Stitches From the Heart
 12 Noon - Senior Dining
 6:00 PM - Yoga Class

NOVEMBER CALENDAR

Wed. Nov. 18

3:15 PM – Brownies – Troop 10015
 6:00 – 7:30 PM - Girl Scouts
 6:30 – 9:00 PM –Voice Over - class

Thurs. Nov. 19

10:30AM – 12 Noon - Blood Pressure Clinic - LSVNA
 11:00 AM – 12:30 PM – Foot Care Clinic
 Call 1-800-587-3382 for appointment
 12 noon - Senior Dining Special Thanksgiving Holiday Feast

Fri. Nov. 20

8:45AM - Mountain View Senior Center Fitness
 10:30 AM - Friday at the Movies Feature:
Rachel Getting Married with Ann Hathaway and Debra Winger
 7:00 PM – International Movie (South Korea), BML

Sat. Nov. 21

9:00 AM - Writing Group
 10:00 – 1200 noon – Bradford Improvement Association
 7:00 PM – Turkey Raffle and Monthly Meeting
 Bradford Fish & Game Club

Mon. Nov. 23

8:45AM - Mountain View Senior Center Fitness
 10:30 AM - Yoga with Fran
 1:00 PM - Bridge Group
 5:30 – 7:00 PM – 4-H Club “High Spirits”

Tues. Nov. 24

10:00 AM - Stitches from the Heart
 12 Noon - Senior Dining
 6:00 PM – Yoga Class

Wed. Nov. 25

10:30AM – 12 Noon Blood Pressure Clinic by LSVNA at Warner Senior Room

Thurs. Nov. 26

Senior Center Closed for Thanksgiving!

Fri. Nov. 27

No Fitness Group today! Too full of Turkey!
 9:00 AM – 3:00 PM Women’s Club Fair – St. Peter’s Lodge

Sat. Nov. 28

9:00 AM – 3:00 PM - Women’s Club Fair – St. Peter’s Lodge

Sun. Nov. 29

10:00 AM – 2:00 PM - Women’s Club Fair – St. Peter’s Lodge

Mon. Nov. 30

8:45 AM - Mountain View Senior Center Fitness
 10:00 AM - Ceramics with Doris
 10:30 AM - Yoga with Fran
 1-4:00 PM - Bridge Group

All events take place at the Bradford Area Community Center (938-6228) or the Mountain View Senior Center (938-2104) unless otherwise noted. Please call to confirm dates and times in case there has been a change to the submitted information.

| Abbreviation Key |
|---|
| BBC - Bradford Baptist Church |
| BML - Brown Memorial Library |
| FGC - Fish & Game Clubhouse -Gillingham Drive |
| KAP - Kearsarge Area Preschool |
| KRES - Bradford Elementary School |
| MVSC - Mountain View Senior Center |
| TH - Bradford Town Hall |
| ZBA - Zoning Board of Adjustment |

Ongoing Events

Children’s Storytime - Wednesdays at 10:30 am BML
 Cemetery Commission - 2nd Thursday at 6 PM. Call 938-5539 for information
 Conservation Commission - 3rd Tuesday 7 PM, Town Hall or BML
 Fish and Game Club - 1st Monday of each month - 7 PM, Fish and Game Club
 First Friday Bunch - 11:30 am MVSC, reservations appreciated, call 938-2104 for information
 Historical Society - open most Saturdays, 1:30 - 3 PM, or call 938-5386
 Library Trustees Meeting - 1st Monday, 7:30 PM - BML
 Planning Board - 2nd and 4th Tuesday, 7 PM, Town Hall
 Rural Heritage Connection - 2nd Monday, 7 PM, BACC
 Selectmen’s Meeting - 1st and 3rd Tuesday, 5:30 PM, Town Hall
 Zoning Board - 1st Tuesday, 7:30 PM, Town Hall



BRADFORD-Special home on **24 acres** with level to rolling terrain. VIEWS, nice setting with established plantings, apple trees, and more, Gambrel has 3 BR's and 1 ½ baths, newer addition with family room and huge wet bar, detached barn/garage. more land abutting available **\$299,500.00**



BRADFORD-Newer colonial with a prestigious setting on a corner lot and VIEWS of local Mountains, mostly rolling lawn, 11 rooms, cherry kitchen, cherry and tile floors, 2 ½ baths, open concept kitchen/dining, nice family room, lots of nice details and landscaping. **\$365,000.00**



SOUTH NEWBURY-Quality built with all great materials, granite, brick, cherry rails and floors, three BR's, 4 baths, VIEWS of Rowe Mt, 28' X 36' multilevel barn, home has reproduction look with quality, **5.42 acres**, 15 room home with lots of extras. NICE **\$495,000.00**

ELLIOT HANSEN ASSOCIATES
A Real Estate Company
603-763-9999

To see these and all other properties in Bradford, click on:

www.bradfordnhrealestate.com

To see this and all other properties in Newbury, click on:

www.newburynhhomes.com

269 Tracy Road, New London, NH 03257

Sarah W. Chapin
Registered Pharmacist



• PO Box 718 • Henniker, NH 03242
Phone (603) 428-3456 Fax (603) 428-7793
Email: HennikerRx@aol.com

This is Our Town

Conservation Commission

The statutes, RSA 36-A, state that the mission of a conservation commission is "the proper utilization and protection of the natural resources" of the town, and to do this the commission is charged with:

- conducting research into local land and water areas
- coordinate the activities of unofficial bodies organized for similar purposes
- keep an index of all open space and natural, aesthetic or ecological areas within the town
- keep an index of all marshland, swamps and all other wetlands
- keep accurate records of its meetings and actions
- file an annual report which shall be printed in the annual town report.

The conservation commission may also prepare, print, and distribute books, maps, and pamphlets related to its work and receive gifts of money and property in the name of the town subject to the approval of the selectmen.

Bradford established a conservation commission in 1969. Its purpose is to compile information on the town's watersheds and other natural resources, to become familiar with the ever changing state and federal regulations concerning such, and to advise the selectmen, Planning Board, and other local committees and boards on environmental issues. A conservation commission is a valuable source of information for the other municipal organizations, all of which have other primary responsibilities.

In order to accomplish many of the above objectives, the Conservation Commission is in the process of updating the Natural Resource Inventory and input

from residents is being sought. This information will be available to town planners and all residents. Completion is expected in early 2010. A comparative analysis of wetlands over ten acres was completed in 1995.

The Commission oversees several town properties: Aiken Town Forest, Pearl Town Forest, Bradford Bog and Spring Hotel sites, and the West Meadow Conservation area.

The current members and alternates are: Nathaniel Bruss, Chair; Meg Fearnley, Treasurer; J. Ann Eldridge, Secretary; Brooks McCandlish; Carol Meise; Perry Teele; Andrea LaMoreaux; Amy Blitzer, Alternate.

The Conservation Commission meetings are held on the third Tuesday of every month at 7pm, either at the Town Hall or, if space is tight, at the Brown Memorial Library. The public is encouraged to attend.

~~THE~~
Rolling Pin

We're Moving!

*Back to the Sweet Patch Building
on Rte. 103 in Newbury*

**20%-50% OFF
STOREWIDE!**

Now thru the end of October!

OPEN Tues.-Fri. 10-4, Sat. 9-4, Sun. 9-3

17 East Main Street • Westport, NH

603-456-2590



Library Lantern

by Meg Fearnley

A new book group has started up at the library. The first book we are reading is *The Road* by Cormac McCarthy. The discussion will take place on Wednesday, November 11 at 7:00 pm at the library. The group will take a break in December.

The next title for discussion is the 2009 Pulitzer Prize in Fiction winner *Olive Kitteridge* by Elizabeth Strout. That discussion will be on Wednesday, January 13 at 7:00 pm. Contact the librarian well in advance if you would like to borrow a copy of the book.

The book-to-movie discussion series continues with *Shane* by Jack Schaefer on Friday, November 6 at 7:00pm.

Next month we will compare the book *Charlotte Gray* by Sebastian Faulks with the movie version on Friday, December 4 at 7:00 pm. Copies of the book are available at the circulation desk.

The international movie to be viewed on November 20 at 7:00 pm is a romantic comedy from South Korea. Next month we will watch a movie from Norway.

The library will be closed on Wednesday, November 11 in observance of Veterans Day. The book group will meet at the library that evening.

Thanks to all who supported our book sales this year. Remember, the book sale area is open by request during library hours.

New books added to your library in October:

For adults

Half Broke Horses by Jeanette Walls
Juliet, Naked by Nick Hornby
The Price of Malice by Archer Mayor
Bicycle Diaries by David Byrne
An Echo in the Bone by Diana Gabaldon

For children and young adults

Diary of a Wimpy Kid, Dog Days by Jeff Kinney
I'm Your Bus by Marilyn Singer
The Roar by Emma Clayton
The Magician's Elephant by Kate DiCamillo
Odd and the Frost Giants by Neil Gaiman
Catching Fire by Suzanne Collins



Bradford Fish & Game News

Here at BF&G we just finished up our 2009 Hunter's Education Class. We had a very positive reaction to the first course we've had in three years. There will definitely be a course again next September, with talk of possibly having one this coming March.

Things are going to be busy for the rest of the fall. There is plenty of fishing still to do and the majority of the hunting season is still in front of us. For those of you who are deer hunters, check out our second annual deer pool. Deadline for sign-up was October 30th and the cost \$20.00. Copies of the rules and information can be obtained from James Sprenger @ 938-5213, Pete Strickland @ 938-5278 or Dan Benedict at 938-5316.

Finally, don't forget the Turkey Raffle! It will be held at the clubhouse on Gillingham Drive on Saturday November 21, 2009 @ 7:00 pm.

Happy Hunting to you all
 From BF&G



The Appleseed Restaurant and Catering We're Affordable!

Tuesday - Sunday, 5:00 - 9:00 pm and Sunday Morning from 9:00 am -Noon.

Try our award winning \$9.99 Sunday Breakfast Buffet
 Great for those hungry college kids coming home for the weekend!

938-2100



Obituaries

Donald Keith

Donald C. Keith, 85 of Lake Massasecum, died Oct. 16, 2009, at home. He was born Feb. 2, 1924, in Milford, MA, the son of William J.A. and Agnes (Frasier) Keith. He graduated from Wattertown, MA High School and Wentworth Institute.

Donald served in the U.S. Navy Seabees during World War II. He spent ten years in Vaudeville with Sonja Henie and many other notables of the time. He operated a dragline and worked in construction with John Palazzi for ten years, later with Penetryn Construction and retired from the town of Henniker as superintendent of buildings and grounds in 1989.

Donald and his family summered on Lake Massasecum for many years, first renting a cabin, then purchasing the "Robbins Farm" on Massasecum Avenue. Later, they moved to a house beside the Lake on what is now Bacon Road where family members lived for many years. Donald lived in Bradford

most of his married life. He was a member of St. Peter's Lodge F&AM 31 of Bradford and was master for five years. He was a member of the Scottish Rite and had been district deputy grand

of the Grand Lodge. He enjoyed fishing and gardening.

Members of his surviving family include his wife of 51 years, Shirley (Milner) Keith of Bradford; two sons, Mark W. and his wife Julie Keith of Bradford; Luke C. and his wife Marshaleen Keith of Long Beach, CA; two daughters, Kelly Lee Keith of Winchester and Katy Jane Keith

of Bradford; six grandchildren, Amanda, Daniel, Sarah, Bowie, Tyler and Keegan; nieces and nephews; and his beloved dog, Darcy.

Memorial donations may be made to The First Baptist Church, P.O. Box 404 or to St. Peter's Lodge, P.O. Box 537, both Bradford, 03221.



College Costs and Funding Workshop

by Jill Pinard

The Town of Bradford Scholarship Committee has enlisted the help of the New Hampshire Higher Education Assistance Foundation (NHHEAF) to present its first scholarship information night on December 2nd from 6:00-8:00pm at the Bradford Area Community Center. Valerie Castonguay from the Center for College Planning at the NHHEAF Network Organizations will present "College Costs and Funding Options."

According to René Drouin, President and CEO, NHHEAF Network Organizations, "NHHEAF has evolved into New Hampshire's source of knowledge for everything college; providing ongoing planning support and the financial resources to help students attain a college education. As the cost of obtaining a higher education continues to grow, NHHEAF plays an increasingly important role in helping New Hampshire students pay for college." This free workshop is a great opportunity for parents, students, and adults considering post-secondary education to gain an overview of the costs and resources available for funding a post-secondary education.

Since the early 1960s, the Town of Bradford Scholarship Committee has been helping Bradford students further their educations. The Town of Bradford Scholarship Committee depends on the support of friends and businesses in our area, and your tax deductible contributions are always appreciated. All donations can be mailed to The Bradford Scholarship Committee, Bradford Town Hall, PO Box 436, Bradford, NH 03221-0436

CORNERSTONE - BRADFORD SPRING

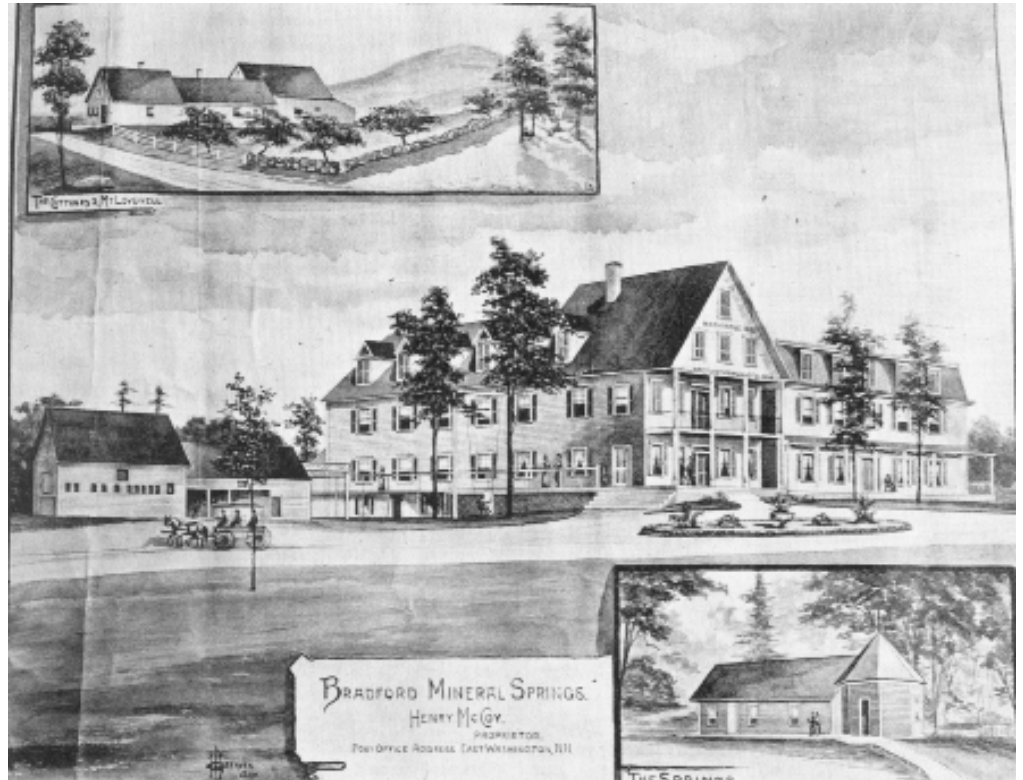
Bradford Spring is the eleventh Community Cornerstones chosen by Bradford residents in 1991 as part of the Governor's Commission on New Hampshire in the 21st Century. The purpose was to identify and protect important features of the town as the new century approached. At the conclusion of this series, the current status of the cornerstones will be reviewed to determine any steps that should be taken to assure ongoing protection.

An 1858 map shows an isolated clump of buildings in the southwest corner of the tipped rectangle that is the town of Bradford. Now, cellar holes are the only remnants of a community that developed here around a curious spring and a clever marketing strategy.

General Sam Andrews built a small hotel he called the Hermitage "a few feet from the spring". The Indians knew of the odiferous spring that never froze. A 1770 story tells of the natives who camped here with their sick by its supposedly curative waters. The Bradford Spring site is located out in the marsh just north of the Bradford Bog. The spring itself was located in the center of the octagonal building and the bath house was the little attached building. Today this spring house has been restored and is on view at the Musterfield Farm in North Sutton. In the old days, there was a boardwalk through the marsh to the spring.

The water of the spring is supposed to contain sulfur and magnesium. One could drink it or bathe in it to cure almost any disease.

The old Bradford Springs Hotel with 75 guest rooms was located on the East Washington Road. The hotel had its own horses and



coaches with which to pick up patrons when they arrived at the Bradford railroad station. A pond, known as Lake Lovewell, was just north of the hotel on the East Washington Road. It provided a place for guests to canoe and paddle row boats. The lake has silted in to some degree, but it is still very much like the old photographs.

In July of 1886, Charles Kezar came up from Salem, MA seeking a cure for what ailed him. Apparently his health was restored by the odiferous waters and Mr. Kezar bought the farm across the road in 1888. In 1905, the spring water was piped directly to the hotel. Once past its heyday, the hotel remained open for another dozen years during the months between May and October. In 1921, it was purchased and taken down to be rebuilt as the Maplehurst Inn in Antrim.

Now the hotel site is a park. It was donated to the town by a descendant of the restorer, Mr. Kezar. The quaking bog and much of the cedar swamp have been preserved for the special environment it is. In 1997 a bronze memorial plaque sponsored by the Bradford Historical Society and the Bradford Conservation Commission, was dedicated at the site, which is maintained by the Conservation Commission.

Re-written from an article by J. Ann Eldridge originally appearing in 2004 in the Bradford Bridge. Thanks to Perry Teele for his deed research and especially to Milly Kittredge for her time and use of the Historical Society's resources for this article.

Tax Incremental Financing

Organizational meetings for the Tax Increment Financing (TIF) Advisory Committee have been scheduled. The first one is on October 27th and the second on Thursday, November 12th at 6:00 pm at the Town Hall. Anyone interested is serving on this committee is invited to attend. Copies of the plan will be available at the meetings. The majority of members will be selected from residents within the TIF District. It is anticipated that the meetings will be held quarterly during the first few years as the fund is built up. The first year will require the most attention in establishing the program.



Girl Scouts[®]
Where Girls Grow StrongSM

There Is a New Troop in Town! Junior Girl Scout Troop #12579 of Bradford and Newbury is actively looking for exciting, crafty, adventurous, creative, intelligent fourth grade girls in search of fun times with great company. Meetings are on the first and third Mondays of the month at the Bradford Area Community Center from 5:30 to 7:15 pm. Call Jill Pinard at 938-5157 for more information.



Bradford Police Report

September Police Activity
9/1-9/30/09

| | |
|--------------------------------------|-----|
| Criminal Trespass | 1 |
| Theft - Unauthorized Taking | 2 |
| Assault - Simple | 1 |
| Stalking | 1 |
| Criminal Mischief | 2 |
| Domestic Violence | 1 |
| Disorderly Conduct | 1 |
| IEA - Mental Health | 1 |
| Truant | 2 |
| Runaways | 1 |
| MV- Citation Violation | 3 |
| MV- Citation Speed | 1 |
| MV - Warning | 48 |
| MV - Complaint | 3 |
| Youth Violations | 1 |
| Vacant Building Check (RE-QUESTS) | 2 |
| Business Checks | 101 |
| Vacant House Checks | 4 |
| Alarm Response Business | 1 |
| Alarm Response - Public Building | 1 |
| Alarm Response - Residential | 1 |
| Assist - Citizen | 2 |
| Assist - Police | 7 |
| Animal - Nuisance | 1 |
| Dog - Abatement | 1 |
| Dog - At Large | 5 |
| Fingerprinting for Volunteer Service | 4 |
| Civil Standby | 3 |
| Welfare Check | 2 |
| Property - Safekeeping | 1 |
| Missing Person | 2 |
| Suspicious Person/Vehicle | 1 |
| Police Information | 2 |
| Paperwork Service | 2 |
| VIN Verification | 2 |
| 911 Hangup | 1 |
| Followup Investigation | 5 |

Halloween is around the corner. East Main Street from the Lake Sunapee Bank to Rt. 114 will be closed to through traffic from 4:00 to 8:00 pm for activities at the Community Center. Drivers are reminded that children will be out and about during these hours all along Main Street.

The police department has begun ticketing vehicles along Main Street for parking on the sidewalk. We ask that everyone cooperate and avoid this expense.

There has been a series of thefts from vehicles in the early morning hours in the High Street, Water Street, and Main Street area. Items taken have been electronics and money. In some cases, the vehicles were ransacked. The suspect(s) were careful not to make noise as they left the car doors ajar. In each case the vehicles were left unlocked. Anyone with information is asked to call 938-2522.

On a more positive note, we have been able to resolve three reported burglaries and two thefts.

The New Hampshire Association of Chiefs of Police is conducting a telemarketing fund raiser in the Bradford Area. The association helps to fund the Police Cadet Academy and it does give out a number of scholarships each year. Remember, if you do not wish to give, simply say "no, thank you", and the telemarketers are supposed to thank you and hang up. If you have difficulty with a telemarketer, please feel free to call us and we will contact the Association to voice your complaint. You can check out the Association at www.nhchiefsofpolice.com. Contact information to express concerns can also be found on the website.



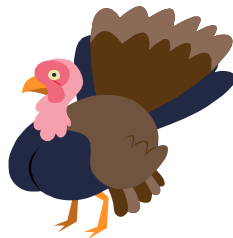
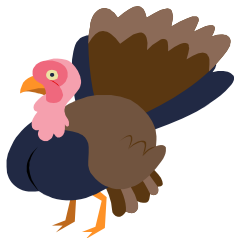
New Art Exhibit Features Photographs

The Bradford Art Group announces a new exhibit in Brown Memorial Library, *These Hallowed Paths: A Photographic Exploration of Pilgrimage in Spain*, by Corrin Meise-Munns of Bradford.

A recent graduate of Marlboro College in Vermont, Corrie earned a Bachelor of Arts in Religious Studies, Cultural History, and Photography. The photographs exhibited in the library are a record of her pilgrimage to Santiago de Compostela in Spain, from one end of the western province of Galicia to the very end of Spain, the seacoast town of Finisterre.

A trail guide opens with the following lines: "The traditional way of the pilgrim is to travel alone, by foot, carrying all the material possessions he might need for the journey ahead. This provides the first lesson of the pilgrim—to leave behind all that is superfluous and to travel with only the barest necessities. Preparation for the inner path is similar...."

For *These Hallowed Paths*, Corrie used a Mamiya Rangefinder, a medium format camera, and a Holga, a plastic toy medium format camera. She transformed the images in the darkroom by making multiple exposures and solarizing prints. The exhibit continues through December, 2009. Library hours are: Mon. 10 – 8; Wed. 10 – 7; Sat. 10 – 3; & Sun. 11 – 3.



Bradford Fish & Game Club Annual Thanksgiving Turkey Raffle

Saturday, November 21, 2009
7:00 pm

at the Fish & Game Club,
Gillingham Drive, Bradford
Fun for the Whole Family!

You could win one of 30 Boxes of Food (each
box valued at \$45 plus)

You could win one of 20 Turkeys (12 to 15 lbs
each)

10 Canned Hams
.22 cal. Rifle To Be Raffled

All proceeds to sponsor the Community Youth
Fishing and Hunter Safety Programs

Any questions call: Paul Gross 938-5566, Fritz Von
Beren 938- 2047

Bradford Historical Society News

During the Bradford Historical Society's business meeting on Oct. 21, 2009, the following officers were elected: *Co-president*, Steve Hansen & David Wadleigh; *Vice President*, George Cilley; *Secretary*, Janet Riley; *Treasurer*, Everett Kittredge. *Directors* are Milly Kittredge, *Archivist*; Harriet Douglass, *Membership*; Marge Cilley, Union Congregational Society Representative; and Maggi Ainslie; Nancy Roberts, & Tim Rodd, Jr. The Treasurer's Report was accepted and the 2010 Annual Budget was approved. A by-law amendment changed the number of directors to define a quorum from six to five.

Following the short business meeting, Steve Taylor, retired Commissioner of the NH Department of Agriculture, gave a humorous, informative talk on "Cows" that included the history and legacy of agricultural land, the special nature of New Hampshire's landscape (open land, the built environment, and forests) and the development of the cow and milk production after the cow first arrived in 1634 in Portsmouth, NH from Denmark. Taylor portrayed cows as essential to building New Hampshire. They provided a reliable food source and oxen-power. Taylor wove a history of how technological developments such as the railroad, the invention of the cream separator and a 60-year battle to clean up milk from TB and Brucellosis, pasteurization, and refrigeration increased commerce and milk production. Today computerized genetics play an important role in "cow and milk development."

The Historical Society will meet again in the spring. For information or questions contact Harriet Douglass 938-5314.

Nadon 60th Anniversary



Congratulations to William (Bill) and Jean Nadon of Bellingham, Massachusetts who celebrated their 60th wedding anniversary in August. Bill is the son of the late Zanella M. (Fortune) Nadon and Joseph A. Nadon. Jean is the daughter of the late Earline Bagley Fortune and Henry Woodbury Adams, Jr. and a 1949 graduate of Simonds High School. Now retired, the couple continues to subscribe to *The Bradford Bridge* their favorite source for “news from back home.”



A Culinarian's Column

by Caryl Walker

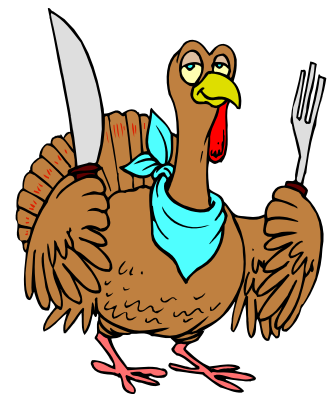
On Thanksgiving Day with the oven stuffed, this stuffing recipe is a reason to give thanks....

Slow Cooker Stuffing

Yield: 7-8 cups

1/2 cup margarine
 1 cup chopped onions
 1 cup chopped celery
 2 teaspoons poultry seasoning
 1/2 teaspoon salt
 1/8 teaspoon pepper
 1/4 cup fresh parsley, minced
 1 3/4 cups turkey or chicken broth
 12 cups dry bread cubes

1. In a large skillet, melt margarine and saute onions and celery until soft.
2. Sprinkle onion mixture with poultry seasoning, salt, pepper, and parsley. Pour in broth and stir to blend together
3. Place bread cubes in a large bowl. Pour onion mixture over stuffing. Stir to combine.
4. Spoon stuffing lightly into a slow cooker. Cook 1 hour on high. Stir. Continue cooking 1 1/2 hours to 2 hours on low.





“HOME CARE MATTERS”

HOSPICE CARE: “It’s about how you live”!

One of the most vital programs of the Lake Sunapee Region VNA & HOSPICE is its certified Hospice Program, a comprehensive, holistic program dedicated to making each person’s final journey what they want it to be. Hospice care emphasizes comfort, independence and quality of life. A skilled and compassionate interdisciplinary team of caregivers manages the physical, spiritual and emotional needs of hospice patients at end of life and of their families. The program also provides bereavement support for 14 months after the patient’s death to help family and friends cope with normal yet difficult phases of loss. Hospice is a vital resource for the VNA’s vast service area of 1,600+ square miles in the Lake Sunapee region, and reaches out to more than 100 families each year in our hospice program and 150 families in our bereavement program.

A clear need is before us as a community and society to increase awareness about and utilization of hospice care. Although home is where most people want to be at end of life, recent statistics indicate that only 31% of individuals nationwide eligible for hospice actually receive this care. As we celebrate “National Home Care & Hospice Month” in November, we hope that this information helps you to better understand hospice care and its vital role in so many lives.

10 important things to understand about hospice care:

- Hospice is for persons of any age, newborns to the elderly
- Hospice does not mean giving up all medical treatment
- Hospice is affordable for most people through Medicare and other insurances
- Hospice is not only for the last few days of life but can be provided for 6+ months
- Hospice focuses on how you live, helping each person find comfort and joy in every day
- Hospice care supports not only the patient but also his or her entire family
- Hospice care is given in any “home setting”: private home, nursing home, hospital
- Hospice does not require you to change doctors
- Hospice team members are on call 24/7
- Hospice is a program of Lake Sunapee Region VNA & HOSPICE not a separate organization

Hospice services include: Skilled Nursing, Physical, Occupational and Speech Therapy, Massage Therapy, Comfort and Pain Management, Medical Social Workers, Spiritual Care Providers, Registered Dieticians, Home Care Aides, Homemakers, Trained Volunteers, Support Groups, Bereavement Professionals, and Physician Support

Questions? Check out our website or call us to learn more. www.lakesunapeevna.org
 107 Newport Road New London NH 526-4077





PIZZA CHEF

LUNCH SPECIALS ~ SUBS ~ PASTA ~ SALADS

“Delicious Pizza”

• Many New Items • Ice Cream • Beer & Wines

Lunch & Dinner

DINE IN OR CALL AHEAD

938-2600

Bradford Pizza Chef at the corner of Rte. 103 & Main ~ Bradford, NH

COMPUTER TALK

Cookies anyone?

I always hear about cookies on my computer. What are cookies and what do they do?

Well, to start with, there are two types of computer cookies: temporary and permanent. Temporary cookies, also called session cookies, are stored temporarily in your browser's (Internet Explorer or Firefox for example) memory and are deleted as soon as you leave a website by closing the browser. Permanent cookies, also called persistent cookies, are stored permanently on your computer's hard drive and, if deleted, will be recreated the next time you visit the sites that placed them there.

What are some good things cookies do?

Cookies help to keep track of information entered at a website. If you filled a shopping cart, for example, the website could 'remember' that information with you as you traveled through the website's pages. Otherwise, every time you clicked on a different page in the website, the website would lose the information in reference to you, forcing you to re-enter it.

A temporary cookie solved this in the short term by using browser memory to save information.

However, once the browser was closed, (You left the website) all temporary cookies were lost. (Your shopping cart was emptied).

Persistent cookies solved this problem. They allowed a site to recognize a surfer permanently by transferring a text file to the visitor's hard disk, and creating a matching file on the website's server. On subsequent visits, the browser automatically hands this cookie over to the website, allowing the website to pull up their matching cookie and restore your shopping cart. Persistent cookies could persist for years.

What are some other results of cookies?

Both temporary and permanent computer cookies can be helpful. Automatic registration logon, preserving website preferences, and saving items to a shopping cart are good examples. Permanent cookies also resulted in the unanticipated use of web profiling. Here's an example. By using banner ads on hundreds of thousands of sites (A banner ad is an ad for another site placed on the website you are visiting) marketers could pass third-party cookies to you and subsequently recognize you

traveling across the web. Your surfing habits could be monitored over a period of months, even years. Sophisticated programs sort information provided by computer cookies, categorizing you based on statistical data (gender, race, age, income level, political leanings, religious affiliation, physical location, marital status, children, pets). All can be determined with varying degrees of accuracy through cookie profiling depending upon how much a person surfs, and where he or she chooses to go online.

What can I do to protect myself?

Cookie controls have been placed in browsers to allow you to turn cookies off. However, many websites simply will not function if cookies are turned completely off. I would recommend as a safe practice to clean cookies from your computer occasionally. This will keep permanent cookies from continuing to track your habits. As always feel free to email me or call me and I can recommend various cookie cleaning programs. Many anti-virus and anti-spyware programs will remove cookies as well.

James Thompson, contact.us@iamnow.net



TAKE-A-BREAK
Interior and Exterior Painting
Free Estimates
Fully Insured
Jay Hinnendael
456-3396

New Bridge Mail Address!

While we are on the subject of the internet, the Bradford Bridge is changing its email address to contact.us@bradfordbridge.com. We will continue to use bradfordbridge@mcttelecom.com for another month or so. The TDS changeover to Gmail here was no easier at the Bridge than in the rest of town so we this changeover should make us more efficient and improve communication.



First Baptist Church News

by Lynne Hubley

Focus Factor: Our youth will be meeting on the following Sundays from 4:00 - 5:30 p.m. during the month of November: November 1 (Kick off the new month and complete the series, "The Face of Love"); November 8 (fun and fellowship --games, etc.); November 15 (bring a friend); November 22 (Ice Cream sundae party). Youth who are in grades 6 and up are more than welcome to come to the church for youth events.

Church Pictures: Bob Shevett will be at the church on Sunday, November 8 and November 15 before and after church to take pictures of individuals and families in our church. We will be placing these pictures on a huge bulletin board in the vestry with the names of each person under the pictures.

Mystery Dinner Theatre: Our church will be putting on a Mystery Dinner Theatre on Friday, November 13 and Saturday, November 14 at 6:00 p.m. The meal will be a roast beef dinner sponsored by the Appleseed Restaurant. The cost is \$12.50 per person. Reservations are a must. Please call the church office to make reservations (938-5313). The mystery is called "The case of the Mysterious Stranger". It's a humorous dinner theatre that takes place at Cafe Flambe, a French restaurant (right in our own vestry). A mystery unfolds between the courses by the actors sitting in the midst. The mystery is based on the scripture Matthew 25:40 "I tell you, whenever you did this for one of the least important of these brothers of mine, you did it for me!"

Thanksgiving Baskets: Our Thanksgiving Baskets will be handed out on Saturday, November 21 from 9:00 - 11:00 from the Food Pantry. We will gladly accept donations of food (office is open Tuesday - Thursday 9:00 a.m. - 1:00 P.M.). Checks can be made out to the Bradford Community Food Pantry and mailed to First Baptist Church, P.O. Box 57, Bradford, NH 03221. There will be no distribution of food on Wednesday, November 18.

Thanksgiving Sunday: We will have a special Thanksgiving Sunday Worship Service on Sunday, November 22 at 10:00 a.m. The Right Hand of Fellowship will be extended to new members during the service.

Men's Fellowship: Our Men's group will meet on Tuesday, November 24 at 6:30 p.m. for devotions, pool and refreshments. Please note the change in day.

Get Paid to Talk

Bradford Area Community Center is holding a class in Voice Over on November 18th from 6:30 to 9:00 pm. You may have been told you have a nice voice, but are not aware of what you can do with it.

Professional coaches will tell you what voice types are in demand and where to look for opportunities to use your gifts in and around your own community without leaving home. If you are just curious about Voice Over, this single evening class is worth while.

The charge for the class is \$10.00 and registration is required by November 13th by calling 938-6228. More information may be obtained by calling 1-866-887-2834.

**GRAND
OPENING
SPECIAL**

**You'll receive
\$10 OFF**
your 1st visit

Schedule your appointment today!

428-8500



Specializing in precision hair cutting & dimensional hair color

**Liberty Look
Hair Studio**
356 Liberty Hill Rd.
Heniker, NH 03242

St. Peter's Lodge Makes Donations



St. Peters Masonic Lodge in Bradford recently donated to local food pantries. The picture above is of the Master of St. Peter's Lodge Paul S. Gross, giving each pantry a donation of \$200.00. The money was raised at the St. Peter's Lodge annual 4th of July breakfast this past summer. Pictured are (from left to right) Charley Marston of Sutton Food Pantry, Gail Bostic of South Newbury Food Pantry, Paul Gross Master of St. Peters Lodge, Dolores Hansen of Bradford Food Pantry, and Adie Stewart of the Bradford Thanksgiving/Christmas Baskets. Below is Paul Gross handing a donation of \$100 to Mark Goldberg, Fire Chief on behalf of the Bradford Volunteer Fire Department.

Open Doors/Open Studio Event Veteran's Day Weekend

Dawn Blanchard, of Henniker, and Ann Eldridge of Bradford will display their original prints and demonstrate their techniques at Ann's studio at 463 Rowe Mountain Road in the barn at the top of the road November 7 and 8, 9am-4pm, during the NH Open Doors studio tour. Dawn specializes in mezzotint prints while Ann uses the intaglio processes of line etching and aquatint. Both hand print in limited editions from copper plates.

Denise Renk works with mosaics, stained glass, and fused glass and will open her workshop on Route 114 across from the lake (the former Mountain Lake Inn). Sasha Wolfe will show her paintings, photographs, drawings and more at her workshop at 152 Pleasant View Road, near the Rosewood Inn. The Rosewood Inn and the Candlelite Inn are also part of the tour offering the wares of additional craftspeople.

Garry Kalajian, blacksmith, will have an open house at the Ararat Forge from 10am-4pm both days as well. He is located on Forest Street which runs between Rowe Mountain Road and Route 114. Ararat Forge is in the red building 1.2 miles from Route 114.

The Open Doors tour is a state-wide effort to introduce people to the artisans, specialty food producers, restaurants, farm stands, lodgings, cultural events and more on Veteran's Day weekend in NH. The website address for a full listing is www.NHopendoors.com.

Holiday Bazaar - Saturday, November 7th, 9AM- 2 PM South Newbury Union Church

Friendship House - corner of Village and Sutton Roads (Handicap accessible)

Get an early start on your holiday shopping

All your Christmas needs in one place

Famous Bake Table Coffee and Donuts

Join us for a delicious lunch and visit with friends and neighbors

For information call 938- 2064

Outside *by J. Ann Eldridge*

A collection of bird-intended seeds sprouted on a logging road up on the Rowe Hills. Sylvan sunflowers. Encircling this impromptu garden with stones, I watched that summer as one light-deprived plant struggled to flower with a boost from its accompanying fertilizer. These seeds, thieved from a feeder at the houses below, had passed through the digestive tract of a coyote. Dog owners know that canids do not chew their food, but 'wolf' it down. And opportunism in feeding has been one factor in the success of the eastern coyote.

The first eastern coyote was killed in NH in 1944. Initially called 'coydogs', they were assumed to be errant offspring of a desperately lonesome western coyote and a philandering domestic dog. The resulting offspring of this rare union do not often survive puppyhood due to their stressed single parent upbringing. This pairing produces an animal with an inexplicable longing for kibble by the fireside and not enough brains to reliably find its own dinner. As a further constraint, coyotes and wolves have a brief mid-winter breeding cycle while domestic dogs come into heat usually twice a year at no set pattern.

DNA testing indicates that this recent species could be a hybrid of the red wolf and the western coyote. But what is, or was, a red wolf? A separate species of the extirpated gray wolf hanging on by a toenail in a few southern states? A subspecies now too diluted by coyote genes to exist as a category at all? Not enough evidence has been left behind to tell us what the red wolf may have been, or even where it lived in pre-colonial times. The dire wolf disappeared as the aboriginal Americans arrived. The appearance of European settlers caused the extermination of wolf species by plan or by habitat destruction, at least temporarily, everywhere in the lower 48 states more than a hundred years ago.

At the same time, land conversion, human population explosion, and livestock and rodent introductions, caused an extraordinary expansion of the smaller western coyote (18-30lbs). The theory is that the western coyote bumped into the declining red wolf (40-70lbs), creating the very versatile and larger eastern coyote (35-60lbs). With little or no competition from larger predators, the eastern coyote has succeeded in traveling beyond Central America and into South America. The red fox is crowded ever closer to our dwellings.

It has been well documented that the coyote's response to eradication methods is to breed at younger ages with larger litters and by more females than it would normally plan for. Their family life is sensibly engineered around resources. The cyclical rise and

fall of small rodents and rabbits would normally determine their numbers. Is it the disruption of family bonds or is it the availability of more food with the artificially lowered numbers that triggers the breeding increase?

Coyotes are everywhere and here to stay. Possibly the gray wolf will return from its refuge in Canada. What does this mean to us? Fears that the recently reintroduced turkey, the deer, the housecats, and small untended children will disappear are considered unfounded by researchers. Turkeys and deer honed their skills evolving with the formidable cougars and wolf packs. Housecats are prickly eating and are, surprisingly, most often tackled by horned owls and the secretive bobcat, though the more visible fisher, fox, and coyote take the blame. Untended children are noisy, suspicious eating, and not readily available in the preferred wooded habitat. There have been no credible accounts of attacks on humans by healthy coyotes or wolves in New Hampshire.

A small percentage of a coyote's menu is deer. Most of this is the helpless spring fawn or chance carrion, determined by an examination of the condition of the meat in coyote stomachs. A deep or crusted snow will give canines an advantage, however, and they will take it. Winter itself kills more deer than coyotes and in the milder south, adult deer are rarely taken. Coyotes follow the least expenditure of energy and will be most successful with the aged and disabled. Compare this to the only species that inexplicably awards prizes to its comrades for killing the best and biggest of the breeding stock and then only consumes a small portion of the body.

On a warm summer evening, I went out to supervise beaver progress on a new dam. Darkness fell, the beaver kept working and talking amongst themselves. Eventually tiring, I stood up, snapping on the flashlight. Beaver tails slapped and a chorus of voices erupted with a series of doggish 'yikes!' A line of paired green/gold eyes blinked slowly, winking on and off as they swiveled to ask questions of their mates. They, too, had been listening to the beaver. My choice was to bushwhack to the Hoyt Brook behind me and ford it by flashlight, or to march into the eyes and cross the old dam to the field and home. The eyes silently disappeared with my first step forward.

Anyone living in the suburban or rural landscape will accumulate coyote stories. We would be poorer in some way without them.

Transfer Station Notes

I live in Bradford and am a member of the Recycling Committee. I believe in the money saving that is reducing our town expenditures by reducing what we throw away, of course. That is sort of a “no duh” concept reinforced dramatically every time you drive by one of those enormous mountains, with predictable slopes, like the one outside Manchester. The buried truth under that mound is what we throw away. Which brings up the question of what does “away” mean? Once you put your trash at the end of the driveway, or take it to the transfer station to toss in the dumpster what happens? It’s just a relief to have it gone and let someone else deal with it. I think there may be a corresponding corollary when it comes to education and putting our kids out at the end of the driveway to be picked up by the school bus, but that is a different story.

I come to the concept of recycling from a different perspective. I have come to see it as a resource. I think that there is enough stuff to go around, we just have to get it to those who need it and can use it. Truly then the transfer in transfer station becomes the operative word. This is particularly true with temporary things, like baby strollers, car seats and children’s toys. I am the grandmother of two delightful girls who at their tender age are devoted to puzzles. They will not always find this appealing but this is the work of childhood and their development. I am indebted to the mothers, for I am sure it is some conscientious mother who has carefully kept all the pieces of countless puzzles together for me to gather up and pass along to my granddaughters.

I haven’t bought a doormat in years, for just when ours is looking tattered, one shows up at the transfer station to replace it. It doesn’t have to be new, after all it is a doormat. More than once an area rug, maybe it needed a good washing or maybe the fringe needed some gluing, now lives with pride at our house.

Anyone who has visited with us knows I am a scavenger as I enumerate the many things that I have adopted or have passed along as needed. The sliding doors on the front of our house? Transfer station. The coffee table with new taller legs to keep the dogs tails from sweeping off the wine glasses? Transfer station. The plate warmer that everyone seems to think is an elegant touch for a hot meal staying hot when it goes on the table? Transfer station. All of our good winter coats hang on good wooden hangers. Kid leaving home to set up housekeeping in an apartment? How about these dishes? No, it’s not a complete set but hey it’s free! This is a New England tradition, an American tradition; Use it up, wear it out, make it do, or do without.

This adage reminds me of one of the sponsors of Prairie Home Companion, Ralph’s Pretty Good Grocery, “If you can’t find it here, you can probably do without it.” This going green idea has been a way of life for decades. Where’ve you been?

Another perspective that has recently become popular, although maybe it’s just new verbeage, is “repurposing”. This is when you use a thing for a use other than what it was designed for. I love old windows, you know the double hung sashes? For years

by *Bindy*

now, I’ve made lots of one of a kind presents or wedding gifts by replacing the glass with mirrors and sanding and painting the frames. Sometime I just leave the finish as is making the most of the distressed look. Yes, it’s some work and a little money, but not the hundred plus dollars from Pottery Barn! I have been gratified to see many of these one-of-a-kind mirrors hanging in a place of prominence in a friend or relative’s home. Our burning bucket to enjoy a fire outside on a summer’s evening? Two enormous truck tire rims stacked on top of each other. Their profile is like turned pottery.

I sincerely appreciate those who realize there is a person out there who can use your old coffee maker, your old toaster (still works fine thanks!), that those sheets and comforter will be perfect for the daybed in the spare room, that Bobby’s outgrown snow pants will be just right for someone smaller sledding this winter.

I’ll never forget the day I saw a bit of red on the table at the transfer station. I’m quite fond of red and it looked soft. I pulled it out from under a table hockey game. It was a red cashmere sweater, no kidding. My size. Wow. Last year a white plastic bag of clothes in the shed was just waiting for me to come along. Included with several other items was a pair of soft turquoise pants with black polka dots all over. They are warm, and fun to wear with a black sweater, sparkling earrings and a festive attitude. Thank you, dear woman, for passing along a favorite treasure.

Classifieds

Free: upright piano, can help move. 938-2692