

# THE Bradford Bridge

community news by neighbors for neighbors

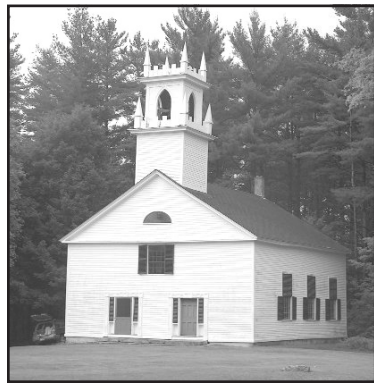
Volume 16, Number 6; Issue 178

June 2006

## Melodrama at the Meetinghouse

On a warm spring day, its facade a dazzling white in the midday sun, Bradford's Meetinghouse seems to connect earth and sky, stretching upward from a greening Old Common into cloudless blue. This is inspiration for postcards; a fitting cover for *Yankee Magazine*; an image of small-town New England as it is cherished in the imaginations of poets and schoolchildren in places far away.

The historic site on Rowe Mountain Road has hosted many events over the years, including the annual Lettvin Concerts, Christmas Eve pageants, and private events. This summer, things will take a dramatic turn.



On Friday, July 28, at 7 pm, a melodrama under the direction of Bradford resident Laurie Buchar will be presented as a fundraiser to benefit the continued restoration and care of the Meetinghouse. Buchar is seeking residents and volunteers to help produce, stage, attend, and enjoy the melodrama, a traditional form of theater that is characterized by exaggerated emotions, stereotypical characters, and interpersonal conflicts. She explains, "When I thought back on all the varied events that have graced the Meetinghouse over

the years, the melodrama of 1990 stood out in vivid detail as a gathering that had the entire cast and audience laughing together. Fundraisers should be fun!"

Volunteers and residents will help organize the event, work behind the scenes, grace the stage as heroes ("hurrah!") and villains ("boooo!"), and most importantly, attend as an enthusiastic (and vocal) audience. "I want them to feel that they have been actively engaged in live theater, and that they are part of Bradford's story," she said.

Buchar, a library media specialist at Kearsarge Regional High School, is a trustee of the Union Congregational Society and has an interest in protecting and preserving this site. Her connection to the Meetinghouse, however, is stronger and more personal than stewardship. "In my memory, the Meetinghouse has been the epitome of a community building," she says. "It has housed most of the momentous events in my life—weddings, christenings, memorials, holidays, performances and potlucks."

For more information about the melodrama, or to volunteer, contact Laurie Buchar at 938-5372.

*by Mike Quinn*

## Local Student Wins

### Poetry Award

Rosemary Bateman, a senior at Kearsarge Regional High School, *by Annie Ball*



Photo by Susan Farber

is the recipient of the Plymouth Writing Project's "Celebrating Rural Poetry" top award for 2006. Plymouth State University is the New Hampshire site for the National Writing Project.

The winning poem, "December," was judged to be the best high school level poem in the category of rural-based "place" themes. Its focus is on nature, derived in part from the beauty of Bradford's natural surroundings.

Bateman, 18, was honored with an all-expenses-paid trip to Washington, DC, where she read her winning verse at the Library of Congress with nationally-renowned poet Patricia Gray. Five other award winners from across the U.S. also participated.

Bateman says that her interest in poetry began at an early age, and has blossomed at KRHS. She credits teachers Jean Traver and Joanne Tulonen as "particularly influential" in encouraging her

## INSIDE THIS ISSUE...

B/N/S Youth Sports .....	17	Letters to the Editor.....	18
Bradford Business Association.....	7	Local News.....	1, 5, 6, 7, 12, 13, 16 & 20
Bradford Historical Society .....	3	Obituary.....	16
Bradford Parks & Recreation.....	7	Outside.....	19
Bradford Women's Club.....	2	Planning Board Notes.....	9
Brown Memorial Library .....	4	Real Estate Hints .....	13
Calendar.....	10 & 11	Recycling .....	16 & 20
Church News.....	16	Rural Heritage Connection .....	5 & 6
Classifieds.....		School District Report.....	14
20.....		Selectmen's Activity.....	9

*continued on page 6*

# The Bradford Bridge



P.O. Box 463  
Bradford, NH 03221  
Ph.: 603-995-6252  
bradfordbridge@mcttelecom.com

### VOLUNTEER STAFF:

Mike Quinn, Editor  
Beth Von Beren, Treasurer  
Annie Ball, Advertising Representative  
Carey Rodd, Classified Ad Manager  
Marion Hall, Subscriptions & Distribution  
Andrea & Phil LaMoreaux, Distribution

### ADVISORY BOARD

Annie Ball, Harriett Douglass,  
Marion Hall, Marcia Keller, Mike  
Quinn, Beth Rodd, Audrey V. Sylvester,  
Phyllis Wilcox

Graphic Design by SmartWoman & Co.  
Printed by RC Brayshaw & Co., Inc.

### Subscription Information

For those wishing to receive *The Bradford Bridge* by mail, the annual subscription price is \$15 to cover the cost of mailing. To subscribe, please send a check to the address above.

### Advertising

*The Bradford Bridge* is a free community newspaper supported by advertisers. To place an ad, call Beth Von Beren at 938-5579. Ad deadline is the 15th of the month.

### Submissions

*The Bradford Bridge* is written by neighbors, for neighbors. Anyone is welcome to submit articles and/or photographs of interest to the community. We reserve the right to edit



# From The Editor's Desk

by Mike Quinn

The past few issues of the *Bradford Bridge* have been filled with stories on voting, buildings, facilities and master plans. This month, we turn our focus to people.

You'll read about a young Bradford poet who's been recognized as one of the best in the nation, experience a family's appreciation for a soldier returning from a long tour of duty in Afghanistan, and learn how a group of volunteers built a field for young ballplayers.

While our lead story about the melodrama fundraiser for the Old Meetinghouse does include a building, it's really a story about Bradford

residents—past and present—who understand that preserving history requires much more than restoring buildings and collecting old documents.

The stories and events these caretakers share educate us and serve as an invitation to do the same for Bradford's next generation.

**Note:** As the *Bradford Bridge* continues to evolve, we are considering new ways to get information to you, including e-mail and the Internet. Your comments and input are always welcome; e-mail me at bradfordbridge@mcttelecom.com or call 995-6252.

## Women's Club Announces New Officers; Yard Sale

Jackye Pehrson was elected president and Deborah McGlew, vice president, at the Bradford Women's Club Annual Dinner on May 23.

The event was catered by the Applesseed Restaurant; attendees said that the food was superb and enjoyed by everyone.

The BWC will hold its Town-Wide Yard Sale on June 10 at the lot next to the Bradford Junction. The event is open to Bradford residents and is widely advertised, so it's a good opportunity to start cleaning out.

Contact Jackye Pehrson at 938-5951 for more information about reserving a spot for a table (participants bring their own tables).

Annual dues are now due. New members are always accepted and welcome.



**INDEPENDENCE DAY**  
**2006**

Thank you Bradford residents for your support.

If you'd like to volunteer for this year's celebration, call Marlene at 938-2530.



## PIZZA CHEF

LUNCH SPECIALS ~ SUBS ~ PASTA ~ SALADS

**"Delicious Pizza"**

• Many New Items • Ice Cream • Beer & Wines

Lunch & Dinner **DINE IN OR CALL AHEAD** **938-2600**

Bradford Pizza Chef at the corner of Rte. 103 & Main ~ Bradford, NH

# Historical Society-PART 2 STORIES FROM THE PAST

by Ruth-Ann M. Harris

There is a wealth of stories in the records at the Historical Society for students or writers or the just plain curious.

Did you know that Bradford had an active community of vaudeville performers for many years? These included Dorothy Brown whose parents visited Bradford while touring with British vaudeville in the 1930s and decided to remain. Dorothy, who was featured on the Ed Sullivan Show in the 1950s, lived until about 15 years ago on Water Street. Sue West Dodge, whose house is on Main St. East, performed with her horse, diving off the pier at Atlantic City. Later she became a 'Roxyette' in New York City before settling for a more sedate life in Bradford.

One of the more interesting characters from Bradford's not so distant past was Dr. Anne Wasson who wrote her autobiography before she died in 2001. *Tincture of Thyme* is available at the Historical Society library as well as the town library. Dr. Anne, as she was known,

chose medicine at a time when most women were actively excluded from most medical schools. Her account is full of fascinating material on the changes in medicine that have transformed the health of all of us. Her book pays tribute to many Bradford citizens who worked with her, including Harriet and Don Douglass. She loved performing with the Lowe family, and recalled a role as a doctor where she was supposed to be caring for an infant. The Saxby twins whom she had delivered about six months earlier were backstage. "Whenever the infant was supposed to be on stage, I grabbed whichever one was awake and not crying."

In her later years Dr. Anne volunteered as a Frontier Nurse in Kentucky. Retired in Bradford, she opened a small shop where she sold quilts she made as well as "Dr. Anne dolls," one of which belongs to the Historical Society.

*Next month: Part 3—Documents chronicle Bradford's history.*

## Learn How History Is Preserved

The Bradford Historical Society will hold its next meeting on Wednesday, June 21 at 7 pm in Deborah Bede's Stillwater Studio at 196 Old Warner Road (next to the cemetery).

Bede is a leading expert on costumes, textiles and preservation of historic articles. When she is not helping to preserve a swatch of history, she is responding to neighbors' calls for help with the Bradford Rescue Squad. Visit her website at [www.stillwaterstudio.org](http://www.stillwaterstudio.org) to learn more before the meeting. Studio space is limited; only 15 people can be accommodated at a time. Reserve a spot by calling Ruth Ann Harris at 938-2660. Reservations will be honored until 6:45 pm.



### Bradford Business Bundle

WWW.IAMNOW.NET  
107 E. Main Street  
Bradford, NH  
938-2127  
866-336-9447 Toll Free

DSL and Web Site — \$45  
320k Symmetric DSL  
(same speed up & down)  
**National Dial-up \$19**  
**100Meg Web Host \$15**

Interested in helping out? Have ideas to share?  
E-mail us at [bradfordbridge@mcttelecom.com](mailto:bradfordbridge@mcttelecom.com)

the Rolling Pin

### Body Butter

from Italy  
A Luxurious,  
Moisturizing Cream  
in Soothing  
Fragrances...

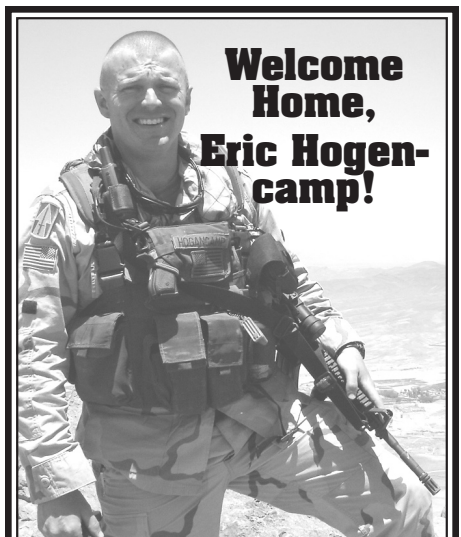


Cocoa Butter ~ Avocado ~ Aloe Vera  
Shea Butter ~ Lemon & Orange

A Must for Everyone With Skin!!!

Open: Wed.-Fri. 10-3, Sat. 10-5, Sun. 10-3

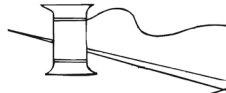
17 East Main Street • Warner, NH 03278  
456-2590 • Fax: 456-2938



Welcome Home,  
Eric Hogencamp!

Eric Hogencamp has safely returned to his family in Bradford after serving in the National Guard in Afghanistan for the past 14 months. He has a wife, Heather, of 10 years; a son Austin, 8; and a daughter Hailey, 4. Thank you, Eric, for your sacrifice and dedication to this country and our community. More people have thought and prayed for you than you will ever know. And Heather, your ability to make your household run smoothly for the past 14 months—once again—shows your strength as a wife and a mother. You are inspiration to many of us! God Bless you both for all you have done! We couldn't

For all your sewing needs...



Window Treatments  
Home Sewing  
Quilts & Repairs

Call Fay at.....938-6474

**Royal**

*A Little  
Magic  
With Wood*

*WoodWrights, Inc.*

*Fine Finish Carpentry & Woodworking*

Specializing in WilsonArt Solid Surface Countertops

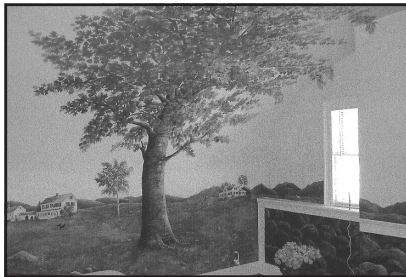
**Bradford 938-5282**

Walter Royal • 603-491-9251

Chase Kenyon • 603-731-5474

www.RoyalKenyonWoodWrights.com

**BRADFORD, Main Street  
Private Back yard**



The "Barrel Room" has floor-to-ceiling mural painted by local artist, P.S. MacDonald.



**BRADFORD**—A special place—built in 1850. Has lots of built-ins, mahogany, pine and maple floors, 3 BRs, attached barn/garage, nice and private, level backyard, 1.2 acres, in-town location, prestigious look, and nicely landscaped .....\$278,500

**ELLIOT HANSEN  
ASSOCIATES**

◆ A REAL ESTATE COMPANY ◆  
603-763-9999



## Library Lantern by Meg Fearnley

Join us on Friday, June 2 for our next book-to-movie discussion of *Memoirs of a Geisha* by Arthur Golden. The movie will be shown at 7 pm. This series continues on the first Friday of each month at 7 pm. You don't have to read the book to join us to watch the movie.

Our next book sale will be held on Saturday, July 1 from 9 am until 2 pm. Look for our float in the parade later that day!

We have set the dates for the 2006 summer reading program "Tombs and Mummies." The program will take place at 10 am on four consecutive Saturdays, July 8, 15, 22 and 29. Children of all ages are welcome.

The Friends of Brown Memorial Library have put together an evening

of poetry "Young Area Poets Read Their Work" at 7 pm on Monday, June 12. Do come support these local word artists!

New books added to your library in May:

FOR ADULTS:

*Mayflower* by Nathaniel Philbrick

*Theft* by Peter Carey

*Digging to America* by Anne Tyler

*Dark Tort* by Diane Mott Davidson

*The Defining Moment* by Jonathan Alter

FOR CHILDREN:

*Weedflower* by Cynthia Kadohata

*Dreamhunter* by Elizabeth Knox

*I'm a Pill Bug* by Yukihisa Tokuda

*Yotsuba&!* by Kiyohiko Azuma

### BROWN MEMORIAL LIBRARY HOURS



Monday 10 to 8 • Wednesday 10 to 7  
Saturday 10 to 3 • Sunday 11 to 3  
StoryTime—Wednesdays at 10:30



**938-5562**

78 West Main St., Bradford • brownml@conknet.com

**Ayer & Goss**

FUELS



**24 HOUR SELF SERVICE  
GASOLINE & DIESEL PUMPS**

Serving the area's heating needs for more than 60 years  
FUEL OILS & LP GAS / COMPLETE HEATING SERVICE

**938-5335**

Route 114, Bradford • Hall Ave., Henniker ... 428-3333

ADVERTISE IN THE BRIDGE—Only \$8 per column inch!  
E-mail [bradfordbridge@mcttelecom.com](mailto:bradfordbridge@mcttelecom.com)

# Keep the Main in Main Street on the Move

by Phyllis Wilcox

The Keep the Main in Main Street Committee met on May 13, adding new members and hearing reports on the group's future; integration with the Needs Assessment Committee; grant applications; and the Revolving Loan Fund.

Selectman Andrew Pinard, a founding member of the group, gave a history of the group, noting that the thrust of the committee has changed since the Valley Transport proposal was defeated at Town Meeting. "The thrust now," he said, "is concern with the growth of community facilities, who we are, and a look at our rural heritage."

He also spoke to the need for partner organizations and the fact that the Needs Assessment Committee (NAC) and Main Street would be working separately but together toward a common goal. Pinard also strongly advised committee members to present everything in writing to the selectmen and other town bodies since telephone complaints and communications are seldom remembered.

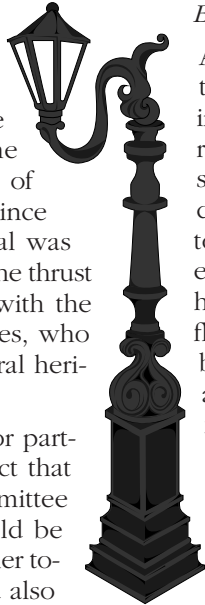
Dick Keller, chairman of the Needs Assessment Committee, reported progress by his group, and was asked whether joining the two committees would make sense. He suggested that the committees keep their separate identities but report to each other regularly. Barbara Freeman, the architect who worked on the community center, suggested that one person from each organization write formal reports to one another. Keller and Eileen Kelly, chair of the Main Street

group, were appointed to be the official representatives of their respective organizations. Ms. Freeman also suggested that all meetings be posted in two places 24 hours in advance and listed in the *Bradford Bridge* calendar.

Audrey Sylvester reported on the status of grants. A \$500 grant submitted in March, 2006 to get a conditional report on town hall renovations is still pending. Another grant is in development for funding to meet town hall safety goals: correcting electricity problems and creating handicapped access to the second floor. This grant is being prepared by Audrey Sylvester, Carol Adams, and Beth Rodd with advisory input from Freeman. The application will be presented to the selectmen for their consideration, input and approval because it is necessary for the Town of Bradford to be part of the grant. Cooperation from other town organizations may also be required.

John Harris commented on the revolving loan which still exists with George Morse as chairman. Harris explained that this involves the Capitol Region Development Council (CRDC). There is money in this fund for Bradford, but the amount is not clear.

The next meeting will be Saturday, June 24 from 9:30 am until 11 am. The meeting place has not been determined, but will be posted in advance. All interested Bradford residents are invited to attend meetings which are open to the public. Information: Ruth-Ann Harris at 938-2660.



# Back To The Old Sod: Enjoy Traditional Irish Music July 1


The Rural Heritage Connection will sponsor a concert featuring Irish traditional music, performed by the duo of Shannon Heaton and Flynn Cohen, under the tent at Brown Shattuck Park from 2 to 4 pm on Saturday, July 1 during Bradford's Independence Day festivities.

The performers delight their audiences

with a fresh perspective on Old World songs. Chicago-native Shannon Heaton is a celebrated Irish Flute player, composer, and traditional singer. Acoustic guitarist Flynn Cohen hails from Shaker Heights, Ohio.

Donations will be accepted; proceeds will benefit the Historic Building Preservation Fund. More information: Ruth-

## Pleasant Valley Sand & Gravel llc



**50 Pleasant Valley Road  
Bradford, NH**

For questions or information contact in-  
**Edwards** **Bruce**

**938-2462**

### A BEAUTIFUL HOME...






**...DESERVES A BEAUTIFUL LAWN**

*Get your BLUE SEAL GRASS SEED and LAWN CARE PRODUCTS from us!*



**MERRIMACK FARM & COUNTRY STORE**

11 E. MAIN ST. BRADFORD 938-2211

[www.merrimackfarm.com](http://www.merrimackfarm.com)



OPEN Monday-Saturday, 8 to 5 • Sunday, 9 to 1

### Get fired up & find sizzling deals on grills and more.



- \$399-4 burner grill - 822 sq. in.-Model 6410-T
- \$329-3 burner grill w/side burner-Model 6355-T
- \$249-3 burner grill - 620 sq. in.-Model 6305-T

All grills feature electronic ignition, large side tables for platters and condiments, cast iron burners and locking casters.

Find the right BBQ tools and expert advice.



**LUMBER BARN**

**Bradford Store Hours**  
Mon.-Fri. 7-5, Sat. 7:30-5

**Goshen Store Hours**  
Mon.-Fri. 7-5, Sat. 7-3

*Customer Appreciation Day*  
Sat., June 3rd - Bradford location

[www.lumberbarn.com](http://www.lumberbarn.com)

Route 114 • Bradford, NH • 938-5161

Route 10 • Goshen, NH • 863-5601

**True Value.**  
START RIGHT. STAY HERE.

## Starr Graduates from RISD

Andrea Starr, daughter of William and Donna Starr of West Main Street, Bradford, graduates from the Architectural Program of the Rhode Island School of Design on June 3. Andrea, a 2001 graduate of KRHS, will be employed by Kearsarge Consulting Inc. in Newbury, New Hampshire.

### Bateman cont. from page 1

in achieving her goals and improving her abilities; also citing naturalist and Bradford resident Ann Eldridge and artist David Carroll of Warner as helping her develop as a poet. "Honestly, I didn't realize this contest was such a great opportunity until after I had won," said Bateman, who has been honored for her writing at the state and regional level before, including a Gold Award from the National Scholastic Art and Writing competition as a ninth grader.

Nature is not her only subject matter, but she draws inspiration "almost daily" from the Mink Hills and Lake Massasacum. "Most of my poetic awareness of the natural world comes from places that surround me every day," she said. "It's impossible to live in New Hampshire and escape nature."

Bateman plans to pursue degrees in environmental studies and creative writing beginning this fall at Ohio's Oberlin College. "I don't really know what's next," she offers when asked what lies ahead, "except to say that I know that my love of poetry and nature will continue to be a guiding force in my future."

## Rural Heritage Connection

The Rural Heritage Connection (RHC) met on May 10 at its usual time, 7 pm, but in its new date and location. It now meets on the second Wednesday of every month in the Brown Memorial Library.

A vote was taken to again participate in the Fourth of July event (taking place on Saturday, July 1) with an informational booth in front of the First Baptist Church. In addition, a well-known Celtic musical group from the Boston area will hold a benefit concert for the RHC's historical preservation efforts during the celebration at 2 pm in a location to be determined.

Other business included further discussion of the possibilities of re-erecting the "Marshall Barn" and working with the Bradford Historical Society in their efforts to relocate to a larger, more secure, and more comfortable headquarters. Grants are being researched to investigate possible methods of repair to Town Hall, retaining its historical aspects.

If you would like to assist with any of these projects, contact Bill Glennie at 938-2681 or Audrey Sylvester at 938-5948. The mission of the RHC is to promote the preservation of properties that have historic, recreational, or environmental significance in Bradford.

## Young Poets Reading at BML

Bradford poet Ellen Hersh has arranged a special event, "Young Area Poets Read From Their Work," on Monday, June 12 at 7 pm in the handicapped accessible Brown Memorial Library. The evening will feature young New Hampshire poets, including award winning poet Rosemary Bateman of Bradford, Andrew Thompson and Emily Anderson from Kearsarge Regional High School; Bow High School, and Katherine Skylar Losik from John Stark Regional High School. Teachers Joanne Tulonen, Heidi Pauer and Jill Pinard are helping the Friends of Brown Memorial Library produce the event. Refreshments will be served. The public is welcome. For more information, call 938-2196.

## Women's Christian Guild Offers Scholarship

The Bradford Women's Christian Guild will offer a scholarship to a resident who has been accepted to a school, college, technical institute or university for further education. Candidates should send a typewritten letter of application that documents volunteer and other activities in which they have participated while living in Bradford; academic and career goals; and how the scholarship will help them achieve those goals to Guild President Edythe Craig, 90 Craig Rd., Bradford, NH 03221. For questions or more information, call Betty Perron at 938-2640.

We're NOT just another convenience store...



## Cobble Pond Farms

OPEN SEVEN DAYS • 6 am-10 pm

Rte. 103  
Bradford

Groceries • Fresh Produce • ATM • Beer & Wine • Lottery • Gifts • Sodas • Snacks  
Sandwiches • Auto Supplies • Newspapers & Magazines  
Toys • Gas, Diesel & Propane • Video &

WE HAVE TEMPORARILY STOPPED MAKING INDIAN FOOD UNTIL FURTHER NOTICE.



*"In the only Henniker on earth"*

Jct. Routes 202, 9 & 114.  
Henniker, NH 03242

**428-7007**

Sun - Thurs 11am-9 pm  
Friday & Saturday 11am-10 pm

# Water, Water Everywhere!



*Breezy Hill River: Breezy Hill Road was one of a handful of Bradford highways inundated by floodwaters during heavy rains last month. The wet weather took a toll on Bradford basements as well.*

*Photos by Les Davidson*



*Waiting for the Ark: A pair of birds perch on one of the few dry spots near the intersection of Routes 103 and 114 during heavy mid-May rains.*

## Bradford Business Association

Visitors will view a spruced up "Welcome to Bradford" sign on the Newbury sign of town; Bradford Business Association member John Mock applied the fresh paint. At its May board meeting, the Bradford Business Association discussed its 2006 brochures, expanding membership among area businesses, and placement and filling of area flower barrels. The 2006 budget was also approved.

## Parks & Rec News

### BEEF ROAST & STREET DANCE - JUNE 30

Parks and Recreation presents its Beef Roast and Street Dance on June 30; Bradford Area Community Center. Beef Roast, 5 to 7 pm: roast beef, pasta salad, cole slaw, beans, rolls, cake, watermelon, lemonade and ice tea. Cost: adults, \$10; children under 12, \$5; 2 and under, free. Music starts at 6 pm and street closes for dancing from 7 to 9 pm. Event moves indoors if it rains.

### COW FLOP (PLOP!) BINGO: JULY 1

On the Lake Sunapee Bank lawn at 10 am. Tickets: \$5 each; cash prizes of \$200 and \$100. To win, pick the numbered square on which the cow will plop!

### LAKE SUNAPEE'S SECRETS - JULY 6

6th, 7th and 8th graders are invited to take a boat trip from 10 am to noon on Lake Sunapee to collect water samples; analyze water quality (ph and dissolved oxygen); and take a look at the little critters who call Lake Sunapee home. Free; sponsored by the Lake Sunapee Protective Association. Space is limited, call early to register.

Info, tickets & registration call Jarna at

The family of Eleanor (Wright) Allen Bullock would like to thank all our relatives, neighbors and friends for the cards, flowers, and donations and for attending the services with us. We extend a very appreciative and grateful thank you to the staff and Dr. Carey Rodd at the Merrimack County Nursing Home for the great care given to her and her cat "Kitty."



### 3,600 sf of Finished Space

- ⊗ 4 levels of living, walkout LL, 4-bay garage
- ⊗ Hardwood & tile floors, formal LR w/gas FP
- ⊗ Wraparound porch/deck, 2 open acres

**Newbury \$445,000**



### Custom Built Cape

- ⊗ 22 acres of open fields, views and privacy
- ⊗ Open concept and master suite on 1st floor
- ⊗ Cathedral ceiling LR w/brick/granite fireplace

**Bradford \$525,000**



### Custom Built with Views

- ⊗ Open kitchen, DR & LR w/exposed beams
- ⊗ Beautifully landscaped, FP & woodstoves
- ⊗ Master suite w/bath, detached garage

**Newbury \$549,900**



### New Englander on 3 acres

- ⊗ 3 bedrooms, 1 1/2 baths, detached garage
- ⊗ Easy access to I-89 and new middle school
- ⊗ HW flrs, remodeled kitchen, new windows

**Sutton \$229,000**



**New office  
opening soon  
in Newbury**

# COUNTRY HOUSES

Real Estate

### Bradford Native



**Sonny Harris**

Put Sonny's nearly 30 years of experience and vast land knowledge to work for you.

370 Main Street • PO Box 1113 • New London, NH 03257 • 526-4020



Stefan Timbrell



Karen Baker



Mason Delafield



Lisa Delafield



Dave Kidder



Joe Burns



Vicki Pearson



Karen Haskell



Sonny Harris



Steve Griffin



Sherry Noyes



Beverly Digilio



Tony Scarpa



John Kinney  
Operations Manager

[www.CountryHousesRE.com](http://www.CountryHousesRE.com)

Use our website to search the MLS!



## Selectmen's Meeting Highlights: May 3 2006

**Gravel Pit.** Permit for Wheeler gravel pit submitted, but State contacts say it may need further information, such as revised site plan, to allow Town to crush gravel for road work. Selectmen recommend Planning Board expedite process in the best interests of the Town.

**Personnel.** Town Clerk/Tax Collector Sue Pehrson advised Board of positive variances in income and expenses. No final decision about her requested 3% raise. Peter Fenton inquired if salary raises of elected officials should be included in an official town meeting vote. Highway department employees will be polled to decide whether to take Monday off instead of Friday of Veterans' Day weekend.

**Oak tree removal.** Todd and Heather Cooper would like to remove the 87 year old oak on town property that drops sizable branches on their driveway. PSNH has said they would cut it down. Town crew will cut it up and haul it away, but crew has many summer highway projects and can't get to it before fall. Removal approved provided PSNH cuts it down.

**Highways.** Newbury Snowmobile Club has a grant to improve the ClassV1 part of Rowe Mountain. and Smith Roads meant to meet other than snow machine standards. Bids on paving Center Road, which should cover from Cheney Hill Road to a little beyond Cressy Road, are being compared.

**Infectious disease preparation.** Bruce

Edwards alerted Steve Lucier, current Health Officer, that there will be serious training soon in the public health network in preparation for a regional response to outbreaks of infectious diseases of any magnitude.

**Recreational facilities.** Rest room and phone signs will be posted in French's Park, per law. Erosion problem and access steps discussed; suggestion made for removable access steps to the swim area. Two BNSYS-constructed ramps for a skateboard park were vandalized; park has been closed. In response to a query, the snack shack is owned by the BNSYS, according to information available.

**Vehicles.** The new police cruiser delivered, transfer of equipment within two weeks. Dick Moore requested reimbursement for personal truck maintenance for his truck until the Town finds a suitable vehicle. Selectmen understood he had previously agreed to pay for the maintenance as long as he could use his truck (gas is paid by the town). Town army truck was suggested for his use. Search for a vehicle is ongoing.

**Community Center.** A lease for Community Action Program, responsibilities and maintenance were discussed. Beef roast and dance will require a partial road closing (with access for emergency vehicles) on Friday, June 30th. Fire and Police Departments have been notified.

**Revolving Loan Fund.** Audit qualified because of missing CRDC information. The Revolving Loan Fund administrator

does not provide the town with all the necessary information of funds.

**Warrant article funds** for new buildings, voted in 2005, specific to those purposes, and cannot be used for general planning.

[BOLD: Needs Assessment. Committee.] Chairman Dick Keller wrote a request that the Rural Heritage Committee and the Bradford Historical Society be allowed to apply for an historic assessment review of the Town Hall by a qualified preservationist. McMillan Co. did an overall assessment. Agenda submitted from NAC secretary Annie Ball for the committee meeting on May 4th.

**Transfer Site.** A letter of agreement between Warner and Bradford Transfer stations, regarding recycling of plastics. It was tabled for the present, because it involves the purchase of a baler.

**Street lights.** Anyone can report a defective street light by calling PSNH and giving the pole number. These can be replaced by PSNH workers, but not Town officials.

Discussion continued about elected positions, whether Selectmen can allow any raises during the year, whether the town clerk and tax collector positions be separated. At this point either person can do either job.

Meeting adjourned at 10 a.m. (continued to May 4 from prior evening).

## Planning Board Notes

by Marcia Keller

Jim Bibbo to a three year term as an alternate member of the Board.

**Gravel Pit hearing.** A public hearing was held to consider modifying a Site Plan Review condition that, since 1995, has prohibited use of a rock crusher at the gravel pit on Center Road. The request came from the Town of Bradford, through Road Agent Steve Lucier, who explained the annual need for gravel and the added expense involved if the material must be obtained from out-of-town sources. The major project for this year is the continued re-building of Center Road. Lucier estimated the savings derived from using the Center Road pit at between \$18,000 and \$25,000.

**Board alternate.** The Board re-appointed Many of the more than fifty people in attendance voiced opposition to the proposal, citing noise, dust, and inconvenience in past years. Quality of life and property devaluation were also mentioned as reasons not to allow continued crushing at this site. The pit owner, Barry Wheeler, speculated that there is, at most, two more years of rock that can be used, and stated that all the rock is crushed and used by the Town. The suggestion was voiced that another source might be found that would be less intrusive to the center of the Town.

Working from the areas of agreement between abutters' concerns and the

Town's needs, the site plan modification was approved by the Board with a 5-1 vote with the following conditions: 1. gravel crusher may be operated on the property for Town use only; 2. crusher will operate for a maximum of 3 weeks (15 working days) each year; 3. crusher will operate only on weekdays (Monday through Friday); 4. crusher shall not begin operations before 8:00 am and will cease operations by 5:00 pm; 5. this modification to allow for operation of a gravel crusher on the site will expire April 30, 2008; and 7 the Board of Selectmen will draft a gravel pit agreement

*continued on page 12*

# Bradford Calendar

**BRADFORD BRIDGE ABBREVIATION MAP**  
 BACC-Bradford Area Community Ctr.  
 BML-Brown Memorial Library  
 BNSYS-B/N/S Youth Sports  
 BWC-Bradford Womens' Club  
 KAP-Kearsarge Area Preschool  
 KRES-Bradford Elementary School  
 MLI-Mountain Lake Inn  
 S. Ctr. -Senior Center at the BACC  
 TH-Bradford Town Hall  
 ZBA-Zoning Board of Adjustments

**German John's**  
  
 Specialty store for Hearty German Breads, Soft Pretzels, Crusty Rolls & Seasonal Specialties Always made from Scratch!  
 We also carry a selection of German Deli Meats, German Coffee, Chocolate Bars & Other Imported Items.  
**5 West Main St., Hillsboro**  
 Open Year-Round • Hours vary by Season  
 Call for orders • 464-5079

Quality dining  Since 1977  
 ...Casual Dining at its Best—  
 Overlooking the Contoocook River  
 Join us for Lunch or Dinner  
 Serving 7 days from 11:30 a.m.  
 Try our fabulous creative menu & daily specials—  
 all homemade & served in a comfortable atmosphere  
 main st. • henniker, nh  
 428.7621  
 Don't Forget to Visit Our Gift Shop!  
 Located above Daniel's Restaurant

**BACC PROGRAM INFORMATION**  
 For scheduling activities at the BACC call the Director, **Jarna Perkins** at 938-6228. There is available time and space to accommodate all age groups at the BACC.  
 • For details or questions regarding Meals on Wheels or Senior Programs, services or  
 • For transportation info call the Senior Center Program Manager, **Sandi Bandieri** at 938-2104  
 • Kearsarge Area Pre-School; for info, contact **Fred Hubley** at 938-5521  
 For general information please call the Administration Office at 938-6228.

SUNDAY	MONDAY	TUESDAY	WEDNESDAY
<b>Ongoing Events</b> CHILDREN'S STORYTIME Brown Memorial Library, Wednesdays at 10:30 a.m. BRADFORD HISTORICAL SOCIETY Old Post Office Bldg, open most Sats. 1:30-3 p.m. or call 938-5386 for appt. "CONTINENTAL BREAKFAST CAFÉ" Senior Center, Fridays, 10 – 11:30 a.m., Fresh fruit, pastry, cereal, juice & coffee.			
<b>4</b>	8:45 am, Strong Living Exercises, S. Ctr. <b>5</b> 10 am, Ceramics w/Doris, S. Ctr. 10:30 am, Yoga from the Heart, S. Ctr. 1-4 pm, Bridge Group, BACC 1:30 pm, Journey Writing Wkshp, S. Ctr. 7 pm, Library Trustees, BML 7-9 pm, Scrapbooking Grp, BACC.	<b>6</b>	3:15-4:30 pm, Class,
<b>11</b>	8:45 am, Strong Living Exercises, S. Ctr. <b>12</b> 10 am, Ceramics w/Doris, S. Ctr. 10:30 am, Yoga from the Heart, S. Ctr. 1-4 pm, Bridge Group, BACC 1:30 pm, Journey Writing Wkshp, S. Ctr. 7 pm, Young Poets, BML	<b>13</b>	6:30 pm, Parks Committee M 7 pm, Rural Heritage of Bradford
<b>18</b>	8:45 am, Strong Living Exercises, S. Ctr. <b>19</b> 10 am, Ceramics w/Doris, S. Ctr. 10:30 am, Yoga from the Heart, S. Ctr. 12 pm, Sudoku Puzzlers Club, S. Ctr. 1-4 pm, Bridge Group, BACC 1:30 pm, Journey Writing Wkshp, S. Ctr.	<b>20</b>	7:30 pm, Conservation Committee, TH
<b>25</b>	10 am, Ceramics w/Doris, S. Ctr. <b>26</b> 10:30 am, Yoga from the Heart, S. Ctr. 1-4 pm, Bridge Group, BACC 1:30 pm, Journey Writing Wkshp, S. Ctr.	<b>27</b>	3:15-4:30 pm, Class,

Your ad here costs only \$17 per month, with a six month minimum & no copy changes  
 Call 938-5509

**Bradford Transfer Station Hours**  
 Wednesday, Saturday, & Sunday  
 10 a.m. to 5 p.m.

**NEW LONDON HAIR STUDIO**  
 HIGHEST QUALITY  
 • Cuts • Perms  
 • Colors • Foil Highlights  
**Offering a substantial senior citizen discount 526-7420**  
 188 Main St., New London  
 Across the street from Peter Christian's

**NEW YORK LIFE**  
**Tanya Hat**  
 Licensed  
**New York Life Insurance**  
 Newbury Harbor  
 Newbury, N  
 603.763  
 Cell 603.7  
 thathaway@ft.n  
 www.newyork

# Calendar for June 2006

WEDNESDAY	THURSDAY	FRIDAY	SATURDAY
	<b>1</b> 9 am, Mountain View Striders, Meet at S. Ctr. 10:30 am, Foot Massage w/Betty Perron S. Ctr. 6 pm, Cemetery Commission, Call 938-5539	<b>2</b> 8:45 am, Strong Living Exercises, S. Ctr 10 am-noon, Card Sharks, S. Ctr 3:15-4:30 pm, Baton Twirling Class, BACC 7 pm, Book-to-Movie Discussion, BML	<b>3</b> 9am, AOA Club (Active Older Adults) Bog Walk, meet at BACC To register call 938-2104
<b>7</b> Baton Twirling BACC	<b>8</b> 9 am, Mountain View Striders, Meet at S. Ctr. 3:15-4:30 pm, Baton Twirling Class, BACC 5-6:30 pm, BACC Governance Board Mtg., BACC	<b>9</b> 8:45 am, Strong Living Exercises, S. Ctr 10 am, Card Sharks, S. Ctr	<b>10</b> 11am-1pm, Writing Group, BACC 1-3pm, Senior Council, Bingo & Refreshments, BACC 1-4 pm, Model Rocket Launch, Mike Bellino, 938-5129, Warner
<b>14</b> & Recreation Mtg., BACC Page Connection rd, BML	<b>15</b> <i>Bradford Bridge Deadline</i> Call 995-6252 for info. 9 am, Mountain View Striders, Meet at S. Ctr. 11 am-12:30 pm, Blood Pressure & Foot clinic, Free, BACC	<b>16</b> 8:45 am, Strong Living Exercises, S. Ctr 10 am-12 pm, Card Sharks, S. Ctr	<b>17</b>
<b>21</b>	<b>22</b> 9 am, Mountain View Striders, Meet at S. Ctr. 11 am-12:30 pm, Blood Pressure & Foot clinic, Free, BACC	<b>23</b> 10 am-12 pm, Card Sharks, S. Ctr  Matinee Movie Club, Call 938-2104 for departure time	<b>24</b> 11am-1pm, Writing Group, BACC
<b>28</b> Baton Twirling BACC	<b>29</b> 3:15-4:30 pm, Baton Twirling Class, BACC	<b>30</b> 10 am-12 pm, Card Sharks, S. Ctr  Roast Beef 5-7 pm Street Dance from 7 pm, BACC	<b>MARK YOUR CALENDAR</b> <b>Next Library Book Sale</b> <b>is July 1st, 9 am - 2 pm, at the BML</b>

**EMERGENCY FIRE, POLICE & RESCUE**  
**TELEPHONE 911**  
NON-emergency # 938-2522

**SENIOR LUNCHES**  
**at the Senior Center**  
12 NOON  
EVERY Mon., Tues. & Thurs,  
*Reservations appreciated*



*Over 18 Years in the Travel Industry*  
**COMPASS TRAVEL**  
116 Newport Rd.  
New London, NH 03257  
**603-526-9600**  
[www.compasstravel.net](http://www.compasstravel.net)



**The Golden Pineapple Gift Shop**  
*Come See What People Are Talking About!!!*  
Open: Mon, Tues, Wed: 9-5:30  
Thur & Fri: 9-7, Sat & Sun: 9:30-5:30  
*Senior Days (60+)-Mon. & Tues.*  
**428-7982**  
Jct's Rts 202/9 & 127, at the blinker beside the highway in Henniker



**The Masiello Group**  
HALLAHAN REAL ESTATE  
*Offering Local Service with Global Strength*  
**Call us Today!**  
**938-2020**  
Route 103 & Center Road, Bradford  
[www.masiello.com](http://www.masiello.com)

*Company You Keep®*  
**Lawrence, LUTCF**  
Agent  
**Insurance Company**  
Plaza, Rte. 103  
NH 03255  
3.3121  
38.3462  
[newyorklife.com](http://newyorklife.com)  
[brkrlife.com](http://brkrlife.com)

**Pay Attention to details and SAVE \$\$\$\$**  
Get a good set of plans BEFORE you build.  
**ABBY WALDRON**  
Architectural Design  
*Over 25 years' experience*  
**603-938-2831**



**LUMBER BARN**  
RTE. 114, BRADFORD  
938-5161 • [www.lumberbarn.com](http://www.lumberbarn.com)  
**STOP IN TODAY!**  
M-F 7-5, Sat. 7:30-5

**SMART WOMAN & CO.**  
Desktop Publishing & Printing  
graphic design ▼ printing  
logo design ▼ illustration  
newspaper & ad production  
**ANYTHING IN PRINT**  
**ANYTHING AT ALL**  
Tel. 603.938.2829  
Fax 603.938.2287  
POB 445, Bradford, NH 03221  
[smartwoman@conknet.com](mailto:smartwoman@conknet.com)

**ACUPUNCTURE**  
  
**Massage Herbs**  
*Treating Sciatica, Asthma, GYN, Digestive Problems, Anxiety & more*  
Gail Miller  
*Licensed Acupuncturist*  
New London & Sunapee, NH  
**603-863-7803**

927-4973      Route 114  
North Sutton

**ALL & AWL REPAIR**

**Small Engine Sales & Service**  
**Tractors • Harness & Tack Repair**

Art, Kirk, Lynne & Kris Chadwick  
Hours: Mon-Fri 7:30-5:00, Sat til 1:00

**Custom Designed Jewelry**  
*Jim Papuga - Goldsmith*  
*Spirit of New England*



Ring in 14k gold with aquamarines, blue sapphire and diamonds.

STATE JURIED MEMBER OF THE LEAGUE OF NH CRAFTSMEN

*By Appointment Only • 938-2901*

OPEN Tues-Sat 10-5      Gift Certificates



**FRAME SHOP & GALLERY**

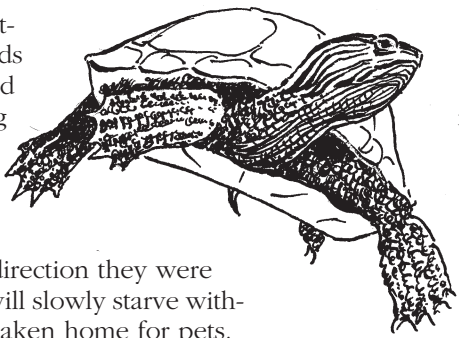
Custom picture framing  
Original art & prints  
Selected antiques

*We're not just framing—  
come in & see what's new!*

916 Main St., Contocook  
746-4996

# Why Do Turtles Cross The Road?

The rains have ended, presumably the weather will clear as it usually does. Beginning with the common painted, followed in season by the snappers, turtles will be crossing the roads. Why would an aquatic turtle cross the road? To get to the other side. They are not lost. Most of the turtles we will see attempting the roads will be egg-filled females heading to and from their nesting grounds. Slow down and help them cross in the direction they were traveling. They will slowly starve without comment if taken home for pets.



construction of their underground nests. Although lofting a snapper by its tail may be the safest method for you, this may cause fatal spinal injury to the turtle. Unlike the painted turtles, snappers cannot retract their vulnerable heads and

feet; this makes them notably defensive out of water.

Shoveling a snapper, or enticing it to assault a stick and dragging it, may be the best method of locomotion.

If you should chance upon the sculpted lid of a wood turtle do not relocate this individual. Once as common

Relocating a breeding individual can seriously disrupt a population. A disease that is manageable in one location can spread quickly in a fertile new location unaccustomed to the pathogen. The bewildered turtle may well attempt to hike home, putting it at greater risk. In addition, she may not be able to locate a suitable winter hibernacula.

as painted turtles, this species is now listed as a "species of concern" in this state due to their dwindling numbers. These are the most terrestrial of turtles, and thus the most endangered by our vehicles and pets. They are tied to their particular habitat and will not survive an inappropriate relocation, no matter how well intentioned.

The water sometimes released by a turtle when handled is not what you may think it is. Turtles will tank up before departing the water and use this reserve in

Slow down, watch for moving rocks, and help them out of the roads.

— J. Ann Eldridge, Bradford Conservation Commission

Read the *Bridge* online:  
[www.bradfordnh.com](http://www.bradfordnh.com)  
Click the *Bradford Bridge* link.

**Planning** cont. from page 9

to reflect these conditions of approval. The Road Agent will post notices when the crushing will begin operation and will return to the Planning Board for a further public hearing if the work cannot be completed by the end of June. The two year time period will allow time to assess future needs and look for alternate sources.

**Subdivision approved.** The Board approved a two lot subdivision on Route 114 for Dina Boch. The property is in both Warner and Bradford.

**Digger Day's Artesian Well Co., Inc.**  
For a Well that Won't Go to Hell, Call "Digger"



Russell C. Day  
Since 1959

- Contract Pricing
- Artesian Well Drilling
- Pump Installation
- Hydrofracturing
- Residential/Commercial
- Replacement of Dug Wells
- Replace Existing Wells that have Poor Water Supplies or Contamination

Visit our website  
[www.diggerday.com](http://www.diggerday.com)



MasterCard      746-3568 • 1-800-698-0079 • Hopkinton, NH      VISA

## Exercise, Eat Better & Win!

Mountain View Senior Center will sponsor the U.S. Administration on Aging's "You Can" program June 9 -14 with a kick-off at the Center on June 8 at 1 pm.

The program, designed for adults age 50 and over, promotes healthier eating; exercise, and participation with family and friends.

Teams will track their steps (with pedometers supplied by MVSC) and consumption of fresh fruits and vegetables for a week, with points awarded for participation in both healthy activities. First place and runner-up teams will be selected at a June 12 luncheon at MVSC, and awards will be presented on June 16.

All participants receive a "You Can" t-shirt compliments of Lake Sunapee Bank.

Existing walking, exercise, church, and other groups from MVSC's nine towns are encouraged to participate. To participate, contact Sandi Bandieri at 938-2104 or Robert Manchester at 938-5080.

## Class Act: Simonds Free High School Alumni Announce Quarterly Luncheon

Alumni of Simonds Free High School are invited to attend the next quarterly luncheon meeting on July 10 beginning at 11 am at Alan's Restaurant in Boscawen. The April luncheon drew 40 alumni representing classes from 1943 to 1960.

The school, which is now the elementary school in Warner and part of the Kearsarge Regional School District, was one of the first tuition free high schools in New Hampshire due to a permanent fund of \$25,000 established by Frankin Simonds and his widow. Mrs. Simonds gave an additional \$5,000 so there would be no cost to the town.

One of the early regional high schools in the state, Simonds drew students from Newbury, Sutton, Bradford, Webster and Warner.

## Real Estate Hints: Reaping a Remodeling Award



The "Cost vs. Value Report" is out and the findings are interesting as usual. This report, published each year in conjunction with *Remodeling* magazine, compares construction costs with resale values in 58 markets. Cost data is gathered from contractors and resale values are aggregated from estimates provided by appraisers and realtors. Let's look at some of the national figures for this past year and compare the national average to Manchester, NH:

### Bathroom Remodel

Job cost: \$10,499, Resale value: \$10,727, 102.2% average recouped, Manchester, NH average is 105.2%.

### Minor Kitchen Remodel

Job cost: \$14,913, Resale value: \$14,691, 98.5% average recouped, Manchester, NH average is 95.9%

### Siding Replacement

Job cost: \$7,239, Resale value: \$6,914, 95.5% average recouped, Manchester, NH average is 100.1%

### Deck Addition

Job cost: \$11,294, Resale value: \$10,196, 90.3% average recouped, Manchester, NH average is 86.4%

### Window Replacement

Job cost: \$9,684, Resale value: \$8,681, 89.6% average recouped, Manchester, NH average is 108.8%

### Home Office Remodel

Job cost: \$13,143, Resale value: \$9,569, 72.8% average recouped, Manchester, NH average is 96.8%

### RECENT SALES IN BRADFORD

\* 70 Pleasant Valley Road, Antique Cape on 2.07 acres for \$180,000

\* 53 Old Sutton Road, Ranch on 3.0 acres for \$185,000

There are currently 38 residential listings, 15 land listings and 5 commercial listings in Bradford.

**EMERGENCY FIRE, POLICE &**

**RESCUE TELEPHONE 911**

The NON-emergency number for the Bradford Police is 938-2522

938-2315

60,000 BOOKS

**Books by the Lake**

Buying & Selling  
Quality Used Books in Most Fields  
Route 114 at Lake Massasecum

## French Farm Greenhouses



**ANNUALS~PERENNIALS~VEGETABLES  
HANGING BASKETS~ PROVEN WINNERS**

Extensive selection of Perennials & Nursery stock.  
Browse through 10 Greenhouses.

Open Monday ~ Sunday 8 to 5  
Follow the signs from Rtes. 9 & 202

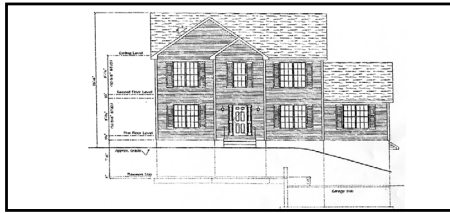
27 French Road  
Henniker, 428-3383



# Find Your Dream Home - Anywhere In NH at [c21redcoat.com](http://c21redcoat.com)



**HENNIKER:** Perfectly maintained 3 BR home, master w/ bath, garage under & new 24x20 detached garage insulated w/ electric. New furnace, septic, windows, well & deck! Ready to move in. 3 season porch w/ views, nice size fenced yard. Beautiful lawn. Must see the view! **\$259,900**



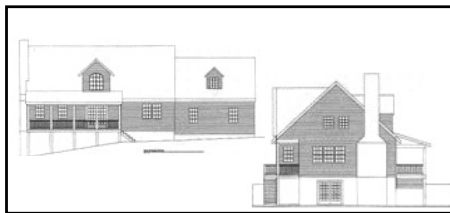
**HENNIKER:** This is a brand new 3 bedroom, 2 1/2 bath Colonial style w/ 2,100 sq feet of room and a 2 stall drive under garage. It is being built in a very nice neighborhood and contains many great features such as a gas log fireplace & outside deck. **\$325,000**



**HILLSBOROUGH:** 2,000 Sq. Ft. three bedroom, energy efficient double wide on its own lot. Large master bedroom with garden bath. The lot borders a really nice brook. Many extra features. **\$219,000**



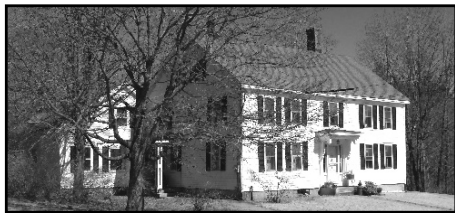
**BRADFORD:** Three bedroom house w/ many fine features w/ rights to Massasecum Lake. 2 car garage and full foundation easily converted into more living area. Located on a quiet road just a few miles from the center of town. **\$242,500**



**WARNER:** Build your dream home in a lovely rural setting. Master bed w/ jacuzzi bath & walk-in shower. 2 stone fireplaces. Finished walkout basement. 4 BRs, 3 up, 1 down; 2 w/ baths. Covered porch & decks! Broker Interest. **\$459,000**



**WEARE:** Spacious New Englander completely renovated w/ custom kitchen & beautiful oak & maple woodwork throughout the first floor. Master w/ private bath. Over 600 sf of attached office space perfect for in-house business, in-law apt or handicap living area. A Must See! **\$496,000**



**WARNER:** Charming circa 1850s home. 4-5 BRs w/ lots of space. 2.1 acres w/ frontage on Willow Brook. Large shabby sheek kitchen w/ woodstove, and walkthrough pantry w/ laundry. Mudroom area off kitchen. Walk to downtown. Zoned B11, lots of possibilities! **\$335,000**



**SUTTON:** Comfortable family home, 3 bedroom, eat-in kitchen leads to deck and 3 season porch with thermal insulated windows. Family room used for crafts — new carpeting in June — first floor master. Tiled kitchen floor. **\$220,000**



**WARNER:** A beautiful site w/ a wonderful home. Frontage on Willow Brook w/ a swimming hole, stone wall, and a lovely view of the marsh and field across the way. 3-4 bedrooms, 1 1/2 bath, open concept living. Wide pine floors & new carpet upstairs. **\$297,500**



**WARNER:** Exceptional antique colonial, A-1 condition, lg. family room, living room and master BR. New tilt windows. Full bsmt, huge attic, vinyl siding, large sub. lot, level and mowed, tennis court, 2 stall htd. garage plus sec 2 car gar. Town water & sewer. **\$650,000**



**NEWBURY:** Summertime is fun on Lake Sunapee! This to be built center chimney cape offers year round living. 3 bedrooms, 1 & 1/2 bath... Lake view with some trees down in front of land. Allowances for carpeting and appliances. **\$299,000**



**WARNER:** Exquisite custom home, 4 bedroom passive solar energy efficient home on 5 acres near fishing from Warner River and skiing at Sunapee. Contemporary with some tile, hardwood and carpeted floors. **\$429,000**

## Put #1 To Work For You!



**Henniker Office**  
 3 Bridge Street • Henniker, NH 03242  
 Phone: 603-428-3828 • Toll Free: (800) 809-5870  
 Fax: 603-428-4441  
 E-mail: [redcoathen@mcttelecom.com](mailto:redcoathen@mcttelecom.com)



John Gater  
Managing Broker



Ted Bryant  
Broker/Associate

# “Oscar” In Bradford?

It may not be playing at the megaplex in Concord, but a new fifteen-minute film about the Bradford elementary school is still a film you should make time to see. Written, produced and filmed by Kris Lee’s 5th grade class, the newscast and stories capture the spirit of what a great little school we have here in Bradford.



Lee recently completed a Masters in Education from Plymouth State University, which focused on technology integration in the classroom. Working with her advisor, and Principal Jim Spadaro, Lee came up with the film idea for her practicum. “The idea was to teach students how to use a digital video camera, write storyboards and make a film,” said Lee. “The kids and I put in over 100 hours of after-school time on the project including editing, filming and

writing.”

After a showing at a school pep rally, Lee hopes to present the film at an upcoming school board meeting as well.

As I have mentioned before, Bradford continues to grow. This September, it looks like we may have to add a third kindergarten class for the first time since the district has offered public kindergarten. Although not final, numbers for the first grade are also getting close to the point where we may have to move from two to three classes, depending on what happens between now and September.

From our lakes to our forests to our quality schools, people are choosing the Kearsarge District as a place to raise  
*by Jon Steiner, KRSD Board Member*

Jessica Blaney Horseshoeing  
Graduate of Oklahoma State  
Horseshoeing School  
Trimming & Shoeing  
603 558-0132

**Live Wire Day Care and Preschool**

is now accepting summer and fall placement for infant to kindergarten. We offer a thematic curriculum with math, science, and pre-reading skills incorporated. Rates are 135 weekly for full time daycare and include the age appropriate classroom setting. Part time care begins at \$3.00 hourly.

For details, call Jan or Sue at 938-2849, M-F 7 am – 5:30 pm.

## KRSD June Events

**June 3:** KRES Bradford – Family Fun Day – 11 am-4 pm; KRMS – 8th Grade Dinner Dance–6 pm; KRHS – Relay for Life.

**June 4:** KRHS – Honors Social – 5 pm; KRMS – Spring Concert – 7 pm.

**June 6:** KRES Bradford-3rd Grade Field trip to Odiorne Point; KRMS – PTO Meeting – 4:00 pm.

**June 7:** KRMS – Ropes Course 6/7, 8 & 9; KRMS – Band Concert – 7 pm.

**June 8** KRHS–School Board Meeting–7 pm, KRES @ Bradford – 4th Grade field trip to Cannon Mountain.

**June 9:** KRES @ Bradford 1st Grade field trip to Sunapee Harbor.

**June 11:** KRHS – Sports Award Banquet – 6 pm – Gymnasium.

**June 12:** KRES @ Bradford – 5th Grade Celebration – 7 pm.

**June 14:** KRHS – Adult Diploma Program Graduation – 7 pm.

**June 15:** KRHS – Senior Night–7 pm.

**June 17:** KRHS – Graduation – 6 pm.

**June 29:** KRHS–School Board Meeting—7 pm

## Tombs & Mummies in Bradford: 2006 Summer Reading

The 2006 Friends of Brown Memorial Summer Reading Program, “Tombs & Mummies,” will begin Saturday, July 8 at 10 am at Brown Memorial Library. The programs, open to all ages, are scheduled for Saturdays in July (15, 22, and 29). Arts and crafts activities will follow stories read by librarian Meg Fearnley. At the final session on July 29, participants will view a surprise video; receive reading certificates; and given a special, congratulatory prize.

**HENNIKER VETERINARY HOSPITAL, PA**  
*Small Animal & Equine Practice*

**Alyssa J. Brust D.V.M.**  
**Robert A. Brust D.V.M.**  
**Jill R. Patronagio D.V.M.**  
**Freya Moscowitz, V.M.D.**

24 Hour  
Emergency Service  
House Calls Available

Henniker,  
New Hampshire

**603-428-3441**

**Floorcraft & Creative Kitchens**  
HOME DECORATING CENTER

Floor Covering  
Cabinetry  
Wallpaper  
Paint  
Accessories

Carl & Gail Olson  
Route 11, Wilmot

526-2600



# Obituary

ARTHUR W. DOTEN

Arthur W. Doten, 85, died Sunday, February 19, 2006 under the care of Hernando Pasco Hospice in Dade City, Florida.

He graduated from Needham High in 1938 and Wentworth in 1942. He was a World War II veteran with active service in Europe. He and Louise Thayer were married in 1946 and moved to Dedham, Massachusetts. He was in the construction business until 1979 when he retired and moved to Newbury, New Hampshire. Mr. Doten was a 32nd degree Mason and Shriner.

He is survived by a loving wife of 59 years; three sons, Edward, Stephen and James; and six grandchildren. A memorial service will be held on June 26 at 11 am at the First Baptist Church of Bradford with Reverend Lynne Hubley officiating, followed by a Masonic Memorial Service.



## First Baptist Church News

from Lynne E. Hubley

**STUDY GROUP:** Thursdays, beginning June 1 from 12:00 noon - 1:00 pm. The group is studying Bruce Wilkinson's book *Beyond Jabez*.

**WOMEN'S CHRISTIAN GUILD:** The Guild will meet at the church at 11:00 am on Friday, June 2 to travel to Country Spirits Restaurant in Henniker for their annual luncheon. All ladies in the community are welcome. For more information, call Edythe Craig, 938-2110 or Marian Tebaldi, 428-4326.

**MOM'S BIBLE STUDY:** A beginners' Bible study for moms will be held on Wednesdays from 9:00 - 10:00 am during the month of June. Childcare is available.

**PRAISE & WORSHIP SERVICE:** A worship team from the First Baptist Church in Claremont will be at our church on Wednesday, June 7 at 7:00 pm for an evening of praise and worship. The service is called "Engage the Heart". They have a wonderful team and will be singing and playing acoustic guitars, bass guitars, drums and the keyboard.

**AMERICAN BAPTIST WOMEN'S MINISTRIES:** The annual dinner for ABWM will be held Wednesday, June 14. Women can meet at the church at 5:30 pm and travel to the Country Spirits Restaurant in Henniker.

**FOOD PANTRY:** The June distribution date for the food pantry is Wednesday, June 21 at 6:00 pm. Food can also be obtained by calling the church office at 938-5313.

**MEN'S FELLOWSHIP:** Men will meet at the home of Fred Hubley on Wednesday,

## Summer Fair: July 1st

The First Baptist Church of Bradford will be holding a Summer Fair on July 1 from 8 am to 2 pm at its West Main Street location. Luncheon booth begins at 10:30 am, ice cream booth; family entertainment from the Little Red Wagon; children's activities; outside vendors; white elephant; baked goods; antiques, collectibles, jewelry, crafts, books and children's items.

## Recycling Committee Reconvenes

Bradford's Recycling Committee has been reactivated by the Selectmen. Please join us for a meeting on Monday June 19 at 7:00 pm at town hall. We will discuss our town's commitment to recycling, how we can best support the efforts at the transfer station, and we can help facilitate communication between all who are involved. More information: Debbie Bruss 938-2979

**Breezy Hill**  
**Self Storage**  
Now Open!  
Call 938-5826

**Hillside Heating**  
**Air Conditioning & Refrigeration Service**  
Commercial • Residential Installation & Service  
**Bradford, NH 938-2454**

 **Bradford Excavating Inc.**   
**COMPLETE SITE WORK:**  
Rock & Stump, Foundation, Septic,  
Road Construction, Fill, Stone Retaining Walls  
*Servicing Bradford, Warner, Sutton, Newbury, Henniker & surrounding towns.*  
**OFFERING:**  
Professional Service, up to date Equipment with Experienced Operators  
*Certificate of Insurance (upon request) 938-5664 • Bradford, NH*



# Community Goes To Bat For Ballplayers

A team effort resulted in a new field for the girls' softball program, and a batting cage for all players in the Bradford Newbury Sutton Youth Sports league.

Under the leadership of Steve Patten of Steve Patten Logging, the volunteer Fields Director for BNSYS, a cadre of individuals and businesses gave their time, energy and expertise to the project: Matt Ordway of Ordway Construction and Paul Gross of Bradford Excavating brought in the heavy equipment to prep the site; Michie Corporation provided the special clay soil at a reduced price; American Fence Co. provided a discounted backstop; and Jay Tucker and his crew from Old Hampshire Design, Inc. constructed the batting cage with materials, equipment and labor donated by Valley Excavation and Newport Sand & Gravel.

After parents and players spruced up the diamonds on Field Clean-Up Day on April 22, the inaugural event for the new field was a all-day "100-inning game" on April 29 conducted by 15 baseball and softball teams from BNSYS and the New London Outing Club.

Numerous local businesses and individuals contributed financially. Donations are still being accepted to cover the expense, and may be mailed to BNSYS, PO Box 291, Bradford NH 03221.



*Tina Desfosses of Bradford, BNSYS Softball director; and Wayne Seabohm of Newbury, a BNSYS T-Ball coach, rejoice over another truckload of debris collected during Field Clean-up Day.*



*Building a field of dreams: (L to R) Steve Patten, BNSYS Fields director, Nate Byfield and Paul Gross of Bradford Excavating, and Matt Ordway of Ordway Construction survey their work on the new softball field.*

*Photos by Jennifer Dow*

## Soccer Camp: a Kick Out of Summer

Registration for BNSYS Major League Soccer Camp, planned for July 31 through August 4, ends on July 1. Camp is at Warren Brook Park in Bradford; age groups range from age 3 to children entering eighth grade. Forms are available at [www.bnsys.org](http://www.bnsys.org). Contact Jennifer Dow at 938-2939 or [dow@iamnow.net](mailto:dow@iamnow.net).



## It's a Blast!

The Kearsarge Area Rocket Society will hold a model rocket launch in Warner on June 10 from 1 pm to 4 pm. Rain date is June 11. Directions at: [www.KARSNH.org](http://www.KARSNH.org), or call Mike Bellino, 938-5129.

### BRADFORD BOARD OF SELECTMEN

Peter Fenton, Chairman  
Bruce Edwards, Selectman  
Andrew Pinard, Selectman  
Cheryl Behr, Town Administrator  
**Office Hours:**

Monday–Thursday, 8 a.m.–noon &  
1 to 5 p.m., Friday, 8 a.m.–noon

**938-5900**

*Meetings are held the  
1st & 3rd Tuesdays, 6 p.m.  
at the Bradford Town Hall*

## Town Clerk/Tax Collector Report

**Town Clerk:** April 13-Elizabeth Gretchen Bennett was born to Leela Burdick and William Bennett in Concord; April 15-Alexis Kaitlyn Caron was born to Alesha and Erich Caron in Concord; April 29-Joel Eugenides and Lori Calvino were married in Sutton.

**Tax Collector:** Tax bills have gone out. If you didn't get yours or you feel there is an error, please contact me or the Selectmen's Office. They will be due on July 7, 2006.

### Supervisors of the Checklist

The Supervisors of the Checklist (Ann Lucier, Judith Marshall and Jarna Perkins) will be in session on Tuesday, June 6, from 7:00 pm - 7:30 pm in the Town Clerk's Office in Town Hall to register new voters and update the checklist. Please bring proof of residency and age.

The New Hampshire Primary will be held on September 12, 2006. Current and new voters have until June 6 to make a political party change or declare a political party per RSA 654:34. Supervisors of the Checklist encourage residents to come into the office to make changes and are available to answer questions. For more information, call the Town Clerk's Office at 938-2288.

The Town Clerk's Office is open Mon. 12:00-7:00 pm; Tues 7 am -12 noon and 1:00 - 5:00 pm; and Friday 8:00 am -12:00 noon and from 1:00 - 5:00 pm.

**WALCO  
MECHANICAL CO.**  
REFRIGERATION, HEATING,  
AIR CONDITIONING,  
ELECTRICAL CONTRACTORS

COMMERCIAL • INDUSTRIAL • RESIDENTIAL  
SERVICE • SALES • INSTALLATION  
MAINTENANCE PROGRAMS  
SYSTEM EVALUATIONS

**938-2926**  
BRADFORD, NEW HAMPSHIRE

# Letters

To the Editor:

I wish to thank each and everyone for their get well wishes, prayers, phone calls, food, cards and offers to help out in any other way. Everything is greatly appreciated.

—Marlene Scribner, Bradford

Dear Editor:

Bradford, New Hampshire is a small typical village that lies 30 miles north of Concord. Perhaps, it is not unique in its problems, perhaps other towns have similar problems and grievances but a recent planning board hearing on the "change in a permit to operate a gravel crusher" located in a gravel pit smack in the center of downtown Bradford, sparked quite a bit of heated controversy.

The outcome of the public hearing was to be expected "the town could save \$22,000. by crushing slabs of rock in the center of town," a location that produces horrendous noise which is heard by approximately 55 homes on West Main Street and Water Street. Guess what? The planning board voted to save the \$22,000 and ignored the fact that 55 of its inhabitants on these roads were impacted by the grinding noise of the crusher that bounces off the homes due to the location of the pit.

This crusher has been operating illegally for four years. The selectmen and planning board didn't realize that the crusher was not permitted in the pit. Our newly elected selectman found the lines in the planning board minutes that sparked the need for a public hearing. Small gains were made. The crusher can only be used by the town, and the operation was limited to three weeks in May and June from 8 am to 5 pm.

About sixty people living in the affected noise area attended the hearing. Many residents spoke against the noise, al-

though it was finally set at only three weeks. We asked for more limited hours, a shorter period of time, a time when the windows could be closed against the noise. A time when we were not to be bombarded by noise during our short summer days. No , May and June were the selected time for crushing and there would be no respite until 2008 when the Selectmen and road agent would try to find a source of gravel that was not in the center of town.

Many people spoke but one of our residents who lives not far from the "crusher site" quoted from the Bradford history book "200 Plus, Bradford, New Hampshire in Retrospect." The paragraph is long but in essence it speaks to the unique quality of life in Bradford "a typical small town...However, there is indeed one important difference which we think makes Bradford unique. In Bradford each generation has handed down to the next a special heritage of integrity, strength and knowledge. This accumulated and precious heritage is ours to enjoy, use, and pass on proudly to those who follow."

What would the writers of this book published in 1976 have to say about the quality of life, integrity, strength, and knowledge in a town where saving \$22,000 is more important than a quality of life. A quality of life that people come to live in New Hampshire to find. A place that promises some tranquility in a world that never stops.

—Phyllis Wilcox, Bradford

*Letters to the editor should be no more than 400 words and may be edited for clarity and content. All letters must be signed and include a telephone number for verification.*

## VOLUNTEERS WANTED

The Bradford Bridge needs you to do more than read.

Can you proofread for typos? Attend a meeting, report on it?  
If you can do any of these things...please call 938-6252.



# Outside

by J. Ann Eldridge

Resting in a cabinet at Harvard University's extensive herbarium is a sample of a small plant. Its label reads "Sclerolepis uniflora - F. T. Lewis, Bradford Pond, Warner, New Hampshire, 1905." This marks the first official record of this plant to be found in New Hampshire. Lewis that year was prowling about the Mink Hills and down to Lake Massasecum, then known as Bradford Pond, studying the plant life. This is quaintly what people used to do for recreation. Lewis may not have known what town he was in, but he did know an unusual plant when he saw one. Sclerolepis can be found elsewhere on the coastal plain of the eastern U.S.. It abounds in Florida and Georgia. In New England it occurs only here at Lake Massasecum and at Wallum Pond on the Massachusetts/Rhode Island border. From thence south it is not to be found until you've passed New Jersey.

How Sclerolepis got here is a broad guess. One possible explanation is that migrating waterfowl serendipitously transported fragments on their webbed landing gear. An alternative explanation for this plant's appearance goes something like this: at some point before the turn of the century, someone traveling from some southern state, and/or from the aforementioned Wallum Pond visited Bradford Pond. They brought with them an aquarium complete with the local vegetation. This was dumped with or without ceremony into the waters of our lake. Is it possible that there were people migrating up and down the eastern seaboard in that era that could not be deprived of the companionship of their aquatic pets? I consider my ancestors to have been less frivolous.

Whether "duck foot" or "fish bowl" theory, Sclerolepis, a member of the enormous aster family, is for now abundant in Lake Massasecum. Had this fragment landed in nearly any other lake in New Hampshire, it would have met with less hospitable conditions. Massasecum is however, itself unusual. It formed post-glacially some 10,000 years ago in a huge sand and gravel deposit. It is a relatively shallow, acidic lake with extensive sandy shores that are buffeted by wave action and fluctuating water levels. Unlike most lakes, Massasecum is not artificially dammed. These fac-

tors create unique communities of plants that are adapted specifically to these conditions. Only a dozen similar sites exist in New Hampshire. Massasecum has a tenuous hold on these "critically imperiled" habitats, remnants of what is known as "twig rush sandy turf pond shore communities". And the Sclerolepis fits right in.

This is a spindly plant that quietly possesses the interesting characteristic of being dimorphic. This means that the same species takes two distinctly different structural forms. For the Sclerolepis, one form is totally aquatic, reproducing vegetatively and covering large areas of the lake floor with soft greenery looking much like a vast evergreen forest seen from an altitude. It is commonly and unfortunately often mistaken for the dreaded milfoil. Milfoil eradication efforts could impact this unique occurrence of the one-flowered Sclerolepis. When the aquatic, vegetative form of this plant is washed ashore or stranded in a dry season, it changes shape. Becoming stouter and more upright, this diminutive stoic then flowers quite nicely.

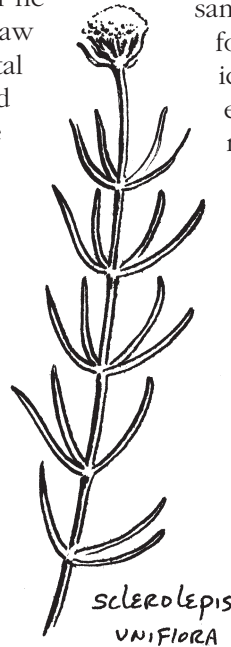
Which brings us to face yet another mystery. In the long, dry summer of 1999, Sclerolepis stranded on the shores and flowered mightily. Normally self pollinating, it appears that our population does not produce pollen. On Massasecum, the Sclerolepis has not been known to produce viable seed. It is possible that these plants are one giant clone of a single

fragment of Sclerolepis appearing by duck or by fish bowl that for whatever reason is not self-pollinating.

Take a slow boat around the lake some day, and, if you were wondering all along, Sclerolepis uniflora is pronounced "sclair - oh - leap- iss you-nih- flor- a."

Thanks to Dr. Debra Dunlop, a botanist living in Newbury, for her help with this article. For more information you can turn to the New England Wild Flower Society website: [www.newfs.org/pdf/Sclerolepisuniflora.pdf](http://www.newfs.org/pdf/Sclerolepisuniflora.pdf).

—Editor's note: This is a reprint of an article from 1999.



**DUMONT'S  
BARBER SHOP**

Wednesdays 8 a.m.–6 p.m.

Main St. Denis Dumont, Owner

**Henniker  
Pharmacy**  
YOUR FRIENDLY  
PHARMACY  
428-3456

**Hugo's Electric, Inc.**

Licensed & Insured  
RESIDENTIAL • COMMERCIAL

938-5573

3191 State Rte 114, Bradford



Local kids enjoy the view on the observation platform at the Bradford Bog. On the lookout are (l to r) Nikki Dow, Nick Brady, Darsie Putnam, and Sammi Dow.

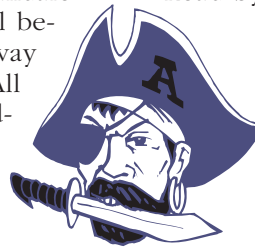
## Pirates of Lake Massasecum!

The Lake Massasecum Improvement Association conduct a boat parade on Tuesday, July 4. The theme for the parade will be "Pirates of Lake Massasecum." Boats, canoes, kayaks and passengers should be decked out to represent the theme.

Assembly will be at 3:30 pm on the water at the end of Oakdale the A-frame (northwest corner of lake). The parade will begin at 4:00 PM and proceed counter clockwise at "headway speed" around the lake returning to the starting point. All participants must follow all boating laws and rules, including registration requirements.

If this year's parade is successful, LMIA will consider adding prizes in future parades. For further information call 938-2488.

Road by



## Classifieds

**FOR SALE:** Large cherry corner wall unit w/lighted glass display case, dry bar, shelves, cabinets, drawers. Measures 12'5" one way and 5'5" the other from corner. Some hinges need work. \$2,250. 938-5194

**FREE:** Kenmore clothes dryer. Elderly but works fine. 938-2692

**FOR SALE:** 2002 John Deere 4500 tractor with loader, 33 horsepower PTO, 1,055 hours. \$15,500 or BRO. 938-2303

**FOR SALE:** AMHA Redhead. Pretty little registered Morgan filly, 9 mos. old. Very gentle; good for farrier and vet. Started with ground work, quick learner. Loves people. \$2500, paza@securespeed.us

**FOR SALE:** Sears Craftsman table saw-Ten inch blade, \$200 or BRO. 938-5952

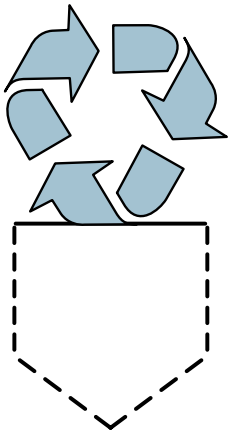
**FOR SALE:** Complete wooden slider doors with frame and screens. Each door panel measures 2 1/2' x 6 1/2', frames measure 4' 10 3/4" X 6' 8" Asking \$150. or BRO. Call 938-2603

**FOR SALE:** Old Town Canoe Discovery Sport 15, Excellent condition. \$1200

To place a FREE classified ad of 40 words or less: please contact Carey Rodd at 938-2692 or send an e-mail to bradfordbridge@mcttelecom.com.

from the Transfer Station...

### Green Scene: Kenny's Factoids



- Painting the town (or just a room)? Use low-VOC (volatile organic compound) paints. Benjamin Moore is a good choice.
- Considering carpet? No matter what color you choose, make sure it's "green". Interface Floor Carpet Tiles, for example, are made from hemp and corn—and they're recyclable.
- Longing for linoleum? Try Marmoleum, made from flax and organic dyes, instead.
- Batteries beyond recharging? Recycle worn batteries from your rechargeable tools—drop them off at Radio Shack, Home Depot and Target.

—references: Natural Resources & Recovery Associa-

### Bradford Bridge July 2006 Deadlines

Display ads, Classified ads, regular features and articles are all due by June 15th.

To list events for the July Calendar—e-mail bradfordbridge@mcttelecom.com by or before June 15th.

**Anything received after the deadline will be included only if time and space allows. If you are reporting on an event happening after the deadline, please call to reserve space**

Call NOW to reserve your ad space on our Calendar page. Call 603-995-6252