

THE BRADFORD BRIDGE

COMMUNITY NEWS BY NEIGHBORS FOR NEIGHBORS

Volume 19, Number 2 Issue 163

February 2005

Bradford Postmaster Retires



Ruth Marden, Bill Horsfall

Photo by Beth Rodd

Postmaster Ruth Marden happily announces that she will retire on January 31, 2005 after 23 years with the US Postal Service.

Ruth's career had her working in the following offices: Henniker, Washington, Newbury, and Bradford NH.

She looks forward to spending more time with friends and family and wants to thank all the members of the community

for their support and help over the years.

The new Postmaster, Bill Horsfall, comes to Bradford with 23 years of service after working in Concord as a City Carrier and a Supervisor Customer Services. He most recently was the Postmaster of the New London office for 9 years. He lives in Contoocook and looks forward to the challenges that working here in Bradford will bring after working in larger offices.

Bradford Information

Things to do: Lakes Massasecum, Todd, and Blaisdell. Bradford Bog. Town Forest. Bradford Mineral Springs.

Municipal Information: Selectmen; Planning Board elected; Police Department, Full-time; Fire Dept., Volunteer;

Election Districts: State House District 5; State Senate District 7; Executive Council

District 2; U.S. House of Representatives District 2.

Utilities: Electric, PSNH; Gas, none; Water Supplier, Private wells; Sanitation, Private septic; Curbside Trash Pickup, None; Telephone, TDS Telecom; Cable TV service, TDS Telecom.

This information is from www.nh.com

Scholarship for Bradford Residents

The Bradford Scholarship Committee is offering a scholarship to Bradford residents who meet the following requirements: Live in the Town of Bradford and are furthering your education in a college, university, school of nursing, or technical institute. Please submit a typewritten application telling us your academic goals, extra curricular and community activities, and how living in Bradford has helped promote these goals. Mail your application to Dawn Rich, P.O. Box 225, Bradford, NH 03221 no later than April 30, 2005. Contributions to the Scholarship Fund can be made through the Town Hall and are tax deductible.

Elizabeth Bouley, Mary Keegan-Dayton & Dawn Rich

INSIDE

BAAC Calendar	15
Bird Survey	5
Bradford Country Squares	4
Bradford Historical Society	13
Bradford Police Dept.	4
Bradford Rescue Squad	13
Bradford Senior Center Cal.	14
Bradford Statistics	18
Bradford Women's Club	3
Classifieds	20
Current Use	3
Events	18
First Baptist Church News	11
Letters	12
Library Lantern	7
Museum of NH History	18
Obituary	8
Outside	19
Mike Quinn Column	16
Real Estate Hints	9
Recycling	6
Savvy Internaut	17
Selectmen's Meetings	10
Senior Council	11
Soo Nipi Audubon	2
Then	17
Town Calendar	20
Women's Christian Guild	6

THE BRADFORD BRIDGE



P.O. Box 463
Bradford, NH 03221
Telephone: 603-938-2692
FAX: 603-938-2995
bradfordbridge@mcttelecom.com

VOLUNTEER STAFF:

Bev Leo and Beth Rodd, Co-editors
Carol Troy, Ad Manager
Jarna Perkins, Business Manager
Carey Rodd, Classified Ad Manager
Vern & Marion Hall, Subscriptions
John & Elinor Robie, Distribution
Gene Schmidt, Distribution
Milly Kittridge, Historian
Susie Janicki, Layout Support

Subscription Information

For those wishing to receive the *Bradford Bridge* by mail, the annual subscription price is \$12 to cover the cost of mailing. To subscribe, please send a check to the address above.

Advertising

The *Bradford Bridge* is a free community newspaper supported by advertisers. To place an ad, call Carol Troy at 938-6186 or send a FAX to 938-2995. Ad deadline is the 20th of the month.

Submissions

The *Bradford Bridge* is written by neighbors, for neighbors. Anyone is welcome to submit articles and/or photographs of interest to the community. The *Bridge* reserves the right to edit submissions for length or content. Send articles or letters to Beth Rodd/Bev Leo at the address, FAX number, or e-mail address above by the 20th of the month.

Bonus Available for Veterans

A bonus of \$100 is available to the Veterans of the Global War on Terrorism Operations., from the State of New Hampshire. Get an application from the NH State Veterans' Council, 275 Chestnut Street, Room 321, Manchester, NH 03101-2411. You can get the application from the Web Site as well, www.state.nh.us; or call the Veterans'

Council at 603-222-9230.

To be eligible you must have been awarded the Global War on Terrorism Expeditionary Medal for Service after September 11, 2001.

Darrell S. Sykes,

Assistant Service Officer,
NH American Legion

Soo-Nipi Audubon Chapter

The Soo-Nipi Audubon Chapter invites the general public to its program titled *Texas Birding*, on Friday, February 11, 7:30 pm at St. Andrews Episcopal Church, Gould Road, New London.

Texas with its abundant birdlife and habitat diversity has become a Mecca for birders. Speaker Ted Keene will share slides of his recent trip. This is a wonderful opportunity to see local and migratory birds on their wintering grounds.

Refreshments will be served. For more information, please contact Ruth White at 763-4893.

On Saturday, February 12, Peter Newborn will lead the annual Soo-Nipi Audubon Chapter birding trip to Cape Ann along the Gloucester/Rockport, Mass., seacoast to look for coastal winter specialities. Participants should meet at Warner Park and Ride, exit 9, I-89 at 8:00 am. Bring lunch, beverage, and binoculars. Inclement weather cancels the trip. If in doubt, contact Newborn at 763-4308.

Phyllis Curtiss



Stork Report

Andrew and Malissa of 25 West Main Street Bradford, NH had a baby girl on Oct. 27, 2004. She was 22 inches long and weighed 8 lbs. He name is Maya Lynne.



HAPPY VALENTINE'S DAY

We're NOT just another convenience store...

WE ARE A TRAVELER'S COMPANION:

WE ARE NOW SERVING INDIAN FOOD

LUNCH & DINNER TO GO WEDNESDAY THRU SATURDAY

Cobble Pond Farms

Groceries • ATM • Beer & Wine • Lottery
• Gifts • Sodas • Snacks • Sandwiches
Auto Supplies • Newspapers & Magazines
Toys • Gas, Diesel & Propane • Video &
DVD rental • Fishing Supplies

938-2662

Rte. 103, Bradford



OPEN SEVEN DAYS! 6:00am-10:00pm

Bradford Bridge is on line:

www.bradfordnh.com

Click on the *Bradford
Bridge* link.

Current "Current Use" in Bradford

Last month's edition of the Bridge provided a bit of an overview of the current use program in New Hampshire. As you may recall, current use is the practice whereby tracts of land of more than ten acres in size are preserved and the owners pay a reduced tax rate as a result. This has been an important land management tool in Bradford for forestry, agriculture, and recreational purposes.

In this installment, let's look at some numbers. According to the 2003 annual report for Bradford, 15,592 acres were maintained in the current use program. Focusing on the numbers, we see that most of the preserved land was forest (about 13,660 acres), with another 563 acres devoted to farmland and 566 acres deemed to be wetlands. There are also about 803 acres which are considered "unproductive", i.e., the craggy slopes, ravines and the like which would be difficult to use for any form of development or logging. Thus, if we consider that Bradford has about 23,000 acres total, approximately 68% can be considered to be land that is, at least temporarily, reserved as open space. The reduced tax rate varies depending upon the type of land, with timber areas having the highest rate and unproductive lands the lowest.

But there are certainly occasions when land in current use must be removed from the program, possibly to build a dwelling or a parking area for a business. In 1999, only seven acres were removed from current use.

In the past five years, the number of acres developed has been growing at a faster rate. When removal does occur, whoever is petitioning for the change in status, pays what is termed a "use change tax", which should be 10% of the actual fair market value of the lot. Of the funds generated from the use change tax, one half goes to the town's conservation fund administered by the appointed Conservation Commission and the other half is delivered to the town's general fund. The money that goes to the conservation fund can then be used for the protection of significant properties for water protection, flood control, wildlife habitat, and the like. This can be done through fostering conservation easements or trail easements on privately held lands, the purchase of development rights or, if necessary, outright purchase of a property. This removes land from current use and puts the change of use tax in a fund to permanently preserve other land as open space. Ironically, as the town's income from the current use change fee increases with development pressures, the cost of preserving land increases even faster.

As a planning tool for towns, the current use program provides open recreational spaces, promotes wise forest and agricultural management, and allows for reduced overall taxation because open spaces require little in the way of costly town services.

Bradford Conservation Commission

The Bradford Women's Club

Our Chinese Auction and Lunch Buffet turned out to be a lot of fun and quite delicious. The food was a bit late but it gave everyone a chance to sit and chat.


Our next General meeting will be held on Tuesday, February 15, at 1:00pm. This will be held at the Bradford Area Commu-

nity Center and will host a guest speaker from the Visiting Nurse Association.



Remember, we will be holding a Town Wide Yard Sale in June, so start saving some of your old stuff!

See you at the next meeting!


Erica Gross, President



Merrimack Farm & Country Store
 PO Box 354/Main Street
 Bradford, NH 03221
 (603) 938-2211

So Warm . . .
 you can go out when
 the cold front moves in.



Conquest™ Waterproof nubuck and suede leather upper•400g Thinsulate™ Ultra insulation•Dri-Lex™ Fleece Lining•Removable 9mm EVA comfort footbed•Waterproof rubber shell with lug outsole•sorel.com

www.merrimackfarm.com

- Anti-Aging Timeless Prescription™
- Health-Isotonix®
- Pet Store



GARY ANDREW
 OVER 700 COMPANIES

- Cosmetics-Motives®
- 1-888-810-4098
- Skintelligence®
- gandrew@gonowmail.com
- www.gottagetit.unfranchise.com

WALCO MECHANICAL CO.

REFRIGERATION, HEATING,
 AIR CONDITIONING
 ELECTRICAL CONTRACTORS

COMMERCIAL • INDUSTRIAL • RESIDENTIAL

SERVICE • SALES • INSTALLATION
 MAINTENANCE PROGRAMS

SYSTEM EVALUATIONS

938-2926

BRADFORD, NEW HAMPSHIRE

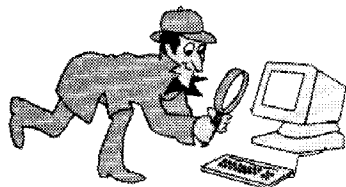


APPLESEED RESTAURANT

Our Tavern is now SMOKE FREE!
 Come visit with your neighbors or enjoy a game of checkers by the fire.
 Enjoy a 10% discount on your entree in the tavern or restaurant if it's snowing, sleeting, or below zero!
 Closed for vacation February 18-28

"WHERE FAMILY AND FRIENDS GATHER"

www.appleseedrestaurant.com
 Tuesday-Saturday 5:00-9:00pm, Sunday 9:00am-noon, 5:00-9:00pm
 Route 103, Bradford, NH * Member, Bradford Business Association * 938-2100



The Savvy Internaut Suggests

Shopping on the Web

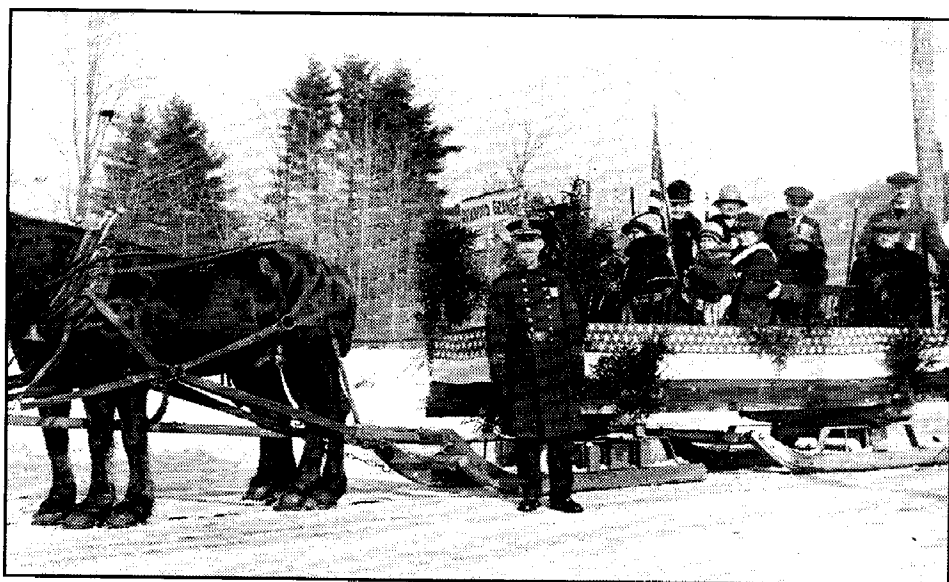
Last month I described the relative safety of shopping on the Internet with a credit card. Never use cash or checks. Federal law limits fraud losses with a credit card to \$50; this is not the case with cash or checks. This month I discuss where I actually do my shopping.

Froogle (a combination of frugal and Google) is available at froogle.google.com. Here you will find actual images of pages from many popular mail order (and Internet order) catalogs. You can do a search for a particular item. And of course there is regular google.com, which indexes several billion Web pages. Google carefully separates commercial sites and marks them as advertisements, but you want commercial sites when you are in a buying mood. Another one of my favorites is overstock.com. Overstock is the Building 19 of the Web. Lots of brand new remaindered and otherwise discontinued items are available, often at prices about 50% of their regular prices. I have bought very fine sheets and an expensive altitude-measuring watch from Overstock. One of the features of Overstock is the button called Worldstock which brings up arts and crafts from many countries around the world.

There are a number of shopping bots, a word derived from "robots." These are automatic programs that go out onto the Net and comparison shop for items. But be aware that companies pay to be listed by a particular bot. Thus, not all purveyors will be listed, but the larger companies will usually be listed for a particular product. One bot I particularly like is fatwallet.com. You can accrue a small reward balance of 2 to 5% if you start at Fatwallet and then go to the site. (I accrued 87 cents last year; I gave it to the Red Cross for tsunami relief. Big donor, me!) Fatwallet also has a forum site where shoppers can discuss various vendors. Other bot sites are shopping.com and shopping.yahoo.com. I have yet to find a bot that includes shipping charges. Shipping

Then...

by Milly Kittredge



Bradford Winter Carnival, 1929

On the double runner, the Bradford Grange members, prepared for the weather. The police Chief is Dell Stevens. The Winter Carnival was a big celebration with parades, outdoor contests, Carnival Ball and Queen, and food.

charges can and do vary widely, so the lowest quoted price is not necessarily the best deal.

Before you complete an online transaction, you should check for online coupons. Generally, sites like amazon.com or bestbuy.com will have coupon offers. But you may not find these special deals by going to their sites directly. Do a Google search on the name of the company, e.g. Amazon, plus the words "coupon codes" or "coupon code." Note the quote marks; they are part of the search string. And be sure to do a search on both the singular and plural. If you find an appropriate coupon code, you can enter it on the online form for the company before checkout. Two sites that specialize in coupons are bargainboardwalk.com and couponmountain.com.

Do you have a favorite shopping site or bot to recommend? Contact me: billhatt@iamnow.net.

Junior Division Poetry Contest

The Poetry Society of NH is sponsoring a spring Junior Division Poetry Contest for NH students in grades 4 through 8. The top ten poems will be published in the PSNH quarterly magazine, *The Poets Touchstone*. Winners will receive a copy of the quarterly and a certificate to recognize their efforts.

There is a \$1 entry fee per poem and guidelines to be followed. For a copy of those guidelines, send a self-addressed business size envelope (SASE) to the Contest Coordinator, Barbara Bald, 21 Finethy Road, Alton, NH 03809.

The contest deadline is April 1, 2005.

Pat Frisella



Bradford PD to hire officer to handle complaints

The following article is taken from the *Argus Champion*, Kristen Senz, January 26, 2005.

The Bradford Police Department plans to hire a part-time officer who will have the additional duty of handling any complaints about other officers within the department.

The new officer would alleviate any concerns that might arise due to Police Chief Jim Valiquet's supervision of his wife and son, who are both uniformed Bradford police officers.

"He'll be in charge of all internal issues and discipline, by way of review," Valiquet said. However, as chief, Valiquet will still make any final decisions regarding disciplinary measures, he said.

The employment manual for the town states that employees' relatives are eligible to work for Bradford as long as no conflicts with "supervision, safety, security, or morale, or potential conflicts of interest exist."

Bradford Selectman Peter Fenton said he knows about the policy, but that he and the rest of the selectmen leave police department operations up to the chief.

"We're pretty much happy with what the chief wants to do," Fenton said.

Since Valiquet's retirement from his role as police chief in Newbury, the selectmen there have created a town policy that prohibits any arrangement in which an em-

ployee would directly supervise his or her relative.

Newbury Town Administrator Dennis Pavlicek, however, said the new policy had nothing to do with Valiquet, whose then-girlfriend worked for the Newbury Police Department for years while he was chief.

With his retirement from his post as full-time Newbury police chief effective Jan. 1, Valiquet serves only as the part-time chief in Bradford.

According to minutes from the October meeting of the Newbury selectmen, Valiquet said he liked working in both towns because it gave him extra money while saving money for Bradford taxpayers. He also said he hoped his son, police officer Steve Valiquet, could someday become chief in Bradford.

Since Valiquet became chief in Bradford, its police department has started patrolling 24 hours a day and requires no assistance from state police.

Valiquet said the new part-time officer should begin work in Bradford within the next month, pending a clean background check. The officer might be given a special title to indicate that he handles internal affairs, Valiquet said, but that hasn't been decided for sure.

The Bradford Police Department is also looking to hire a number of other part-time officers, he said.

Statewide Survey Needs Your Help!

What Kinds of Birds Are Visiting Your Feeders?

New Hampshire Audubon (NHA) needs assistance from citizens all over New Hampshire to determine the status of bird species in the state. Participants in the annual Backyard Winter Bird Survey on Saturday, February 12, and Sunday, February 13, will help NHA get a clearer picture of what's really happening with our winter birds this year.

Anyone can participate in the Backyard Winter Bird Survey simply by counting the birds in their own backyard on the survey weekend and sending the results on a special reporting form to NHA. To receive a copy of the reporting form and complete instructions on how to participate, send a self-addressed, stamped, long envelope to: NHA, Winter Bird Survey, 3 Silk Farm Road, Concord, NH 03301-8200. Forms are also available at Audubon centers in Auburn, Concord, Laconia, Manchester, and Moultonborough, or you can find them on the NHA web site, along with more information about the survey, at www.nhaudubon.org.

All New Hampshire residents are encouraged to participate in the survey. For more information about the Backyard Winter Bird Survey, please call New Hampshire Audubon at 224-9909 or go to the NHA Website at www.nhaudubon.org.



**Breezy Hill
Self Storage**

Now Open!

Call 938-5826



WWW.IAMNOW.NET
107 E. Main Street
Bradford, NH
603-938-2127

Internet--Pure and Simple!

Internet Access:

Toll free 56K dial up from Bradford, Henniker, Hillsboro, Newport, Sunapee, Sutton, Warner, and Washington

DSL (Bradford 938 only) Faster than dial up!

Refer a Friend -- Get \$20.00

Hugo's Electric, Inc.

Licensed & Insured

RESIDENTIAL • COMMERCIAL

938-5573

3191 State Rte 114, Bradford

Custom Designed Jewelry

Spirit of New England

Jim Papuga—Goldsmith



Pendant, 14K gold with "shell cut" amethyst, citrine or blue topaz center stone and side diamonds.

STATE JURIED MEMBER OF THE LEAGUE OF NH CRAFTSMEN

By Appointment Only • 938-2901



We Shovel, Shop, Cook
Why not spend the rest of winter with us?
Pets welcome.
\$100/day rate.

Foxchase Assisted Living
P.O. Box 620
South Sutton, NH 03273
www.foxchaseassistedliving.com
(603) 938-5111
We are on Rte. 114 between New London and Bradford.



"In the only Henniker on earth"

Jct. Routes 202, 9 & 114.
Henniker, NH 03242

428-7007

Sun - Thurs 11am-9 pm
Friday & Saturday 11am-10 pm

MANDATORY RECYCLING BENEFITS OUR ENVIRONMENT

The world in which we live is a better place because so many residents of Bradford are bringing their discards to the Bradford Transfer and Recycling Center for recycling.

Here are some of the ways that Bradford is helping to keep our air and water clean, harvest our natural resources of timber and oil as truly needed, and preserve the earth's beauty that we all appreciate.:

- According to Northeast Resource Recovery Association (NRRRA), although steel cans are a small portion of the waste stream (about 2%), every ton of steel cans recycled conserves 2,493 pounds of iron ore, 1,395 pounds of coal, and 119 pounds of limestone. Recycled steel cans, lids, and jar caps are made into nails and screws, among other things.

- According to NRRRA, although aluminum cans (and other aluminum items, such as foil plates and pans) make up approximately 1% of the waste stream, their resale value is the highest of any recyclables. The sale of recycled aluminum can represent upwards of 25% of the total revenues a municipality may receive from the sale of all recyclables. NRRRA says that producing new aluminum products from recycled aluminum reduces air pollution by 95%, water pollution by 95% and energy consumption by 95%.

- All of the glass (including whole or broken light bulbs and ceramics) that we collect is pulverized and used for road resurfacing material.

- Milton Bradley purchases all the mixed paper that we collect; game boards are made out of clean, unwanted mail, cereal boxes and other light cardboard items: egg cartons, grain bags, wrapping paper, etc.

- Old tires are pulverized in the Midwest and used in making playground mulch.

- German automakers have created the eco-diesel that uses frialator oil from restaurants.

Car batteries, clothing and other textiles, corrugated cardboard, fluorescent bulbs and motor oil and filters are also collected and sent for recycling. Books, household items, appliances, furniture and building items are set out for the residents to take for themselves; those items not taken after a reasonable time are appropriately recycled or discarded.

The good residents of Bradford are helping our earth as a whole, as well as here at home, when they participate in the recycling efforts at the Bradford Transfer and Recycling Center.

Kenneth Anderson, Manager

Women's Christian Guild

The next meeting for the Bradford Women's Christian Guild will be held at the First Baptist Church of Bradford vestry on Friday, Feb. 4th. at 11:30 a.m. for a pot luck dinner.

Following, the Guild will have a program on Reminiscing. Each participant will bring a picture of themselves as a child, then

tell a story of a memorable occasion that stands out in their mind that was a happy time for them, or one of special significance.

Anyone who is interested in learning more about the Women's Christian Guild is welcome to attend.

For information call 938-2640.

We need stringers to cover local events and meetings; photographers and typists.
bradfordbridge@mcttelecom.com ~ 938-2692



Library Lantern

by Meg Fearnley

January was a lively month at Brown Memorial Library. We had two book-to-movie discussions, *Being There* by Jerzy Kosinsky and *The Borrowers* by Mary Norton, for children. Our next adult book-to-movie discussion on *Gaudy Night* by Dorothy L. Sayers will be on Friday, February 18 at 7:00pm. Copies of the book are available at the library, but you don't need to read the book to come see the movie.

We have a new exhibit on our "Art Wall" of work by Marion Klein of Bradford and a new display of seashells in the small display case thanks to Jean Kennedy. Both displays are guaranteed to lift your spirits.

Storytime continues at 10:30 each Wednesday morning. We enjoy reading to groups of any size!

The following are some of the many new books added to your library in January:

- For adults:
Entombed by Linda Fairstein
The Island's True Child: A Memoir of Growing Up on Criehaven by Dot Simpson
Unforgivable Blackness by Geoffrey Ward
Loop Group by Larry McMurtry
Collapse: How Societies Choose to Fail or Succeed by Jared Diamond
Baker Towers by Jennifer Haigh
Harvest: A Year in the Life of an Organic Farm by Nicola Smith
- And for children:
Baby Brains by Simon James
The Guardians of Ga'Hoole series by Kathryn Lasky
Sir Gawain and the Green Knight by Michael Morpurgo
Seeds by Ken Robbins

BROWN MEMORIAL LIBRARY HOURS:

Monday, 10:00 am–8:00 pm
 Wednesday, 10:00 am–7:00 pm
 Saturday, 10:00 am–3:00 pm

StoryTime Wednesdays 10:30

Telephone: 938-5562

email: brownml@conknet.com



Bradford



This nice 4-season house has deeded access to Lake Massasecum. With easy, one floor living this house is perfect as a second home for skiing or playing at the beach. Entertain guests on the large deck. Great location for easy commuting to work and/or the Ski Mountains!

\$215,000

Bradford



With 20+ private acres with pond, brook, stone bridge, and several out buildings, this antique farmhouse would make the perfect family compound! With 14 rooms, this house features wide pine floors, vintage moldings, an eat-in kitchen and a formal dining room!

\$325,000

Ann C. Hallahan, Managing Broker

COUNTRY HOUSES

Real Estate

1 Center Road PO Box 525
 Bradford, NH 03221
 938-2020

www.CountryHousesRE.com

QUOTE OF THE MONTH

"You will find as you look back upon your life that the moments when you have really lived are the moments when you have done things in the spirit of love."

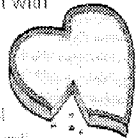
Henry Drummond 1786-1860
 Theological writer, revivalist,
 explorer, geologist

The Rolling Pin

TAKE A BITE OUT OF MY HEART SWEETIE!

Surprise your sweetheart with a heart-shaped cake for VALENTINE'S DAY!

The sweetest beauty of the HEART BUNDT PAN will be a crowd's favorite year-round!



Open Tues.-Fri. 10-5, Sat. 9-5, Sun. 9-3

17 East Main Street • Warner, NH 03278
 456-2590 • Fax: 456-2938

DODGE'S GENERAL STORE

Featuring



Premium Delicatessen Products
 Beer • Wine • Full Dairy Case
 Breads & Groceries
 Medicines • Health & Beauty Aids
 Newspapers
 Housewares • Hardware,



We are now an agent of
 Riverside Dry Cleaners LLC
 Pickup & Drop off

OPEN EVERY DAY
 8 am - 9 pm

102 E. Main Street, Bradford

Hillside Heating & Air Conditioning

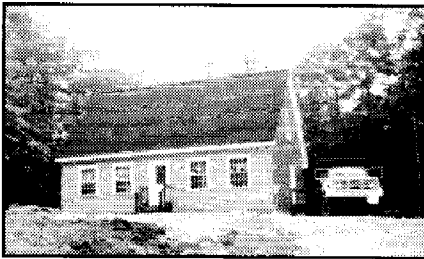
Commercial and Residential Installations

Call for free estimates & system evaluations
Satisfaction Guaranteed
Over 20 years of experience

Bradford, NH

603.938.2454

Bradford



Presently being built, this well constructed 28 X 36' Cape will have wood floors & stairway, custom wood trim, three BR's & 2 1/2 baths, 5 acres of land, an allowance of \$3,000 for appliances, and much more--great floor plan!

\$249,500

ELLIOT HANSEN ASSOCIATES

◆ A REAL ESTATE COMPANY ◆

603-763-9999



New London
526-6951

**Fresh Meats
&**

Produce

Fresh Fish

Fresh Deli Items

Obituary

JOHN PETER COSGROVE

John Peter Cosgrove died on January 21, 2005 in New London, New Hampshire after a long battle with Parkinson's Disease.

He was born December 30th, 1924 in Hillsboro, Wisconsin. He was the son of Carles Henry and Olga Lier Cosgrove, and brother of Lear Lionel (Bill) Cosgrove, who died in 1964.

Peter attended lower schools in Hillsboro, and the University of Wisconsin, where he was a member of the Delta Tau Delta fraternity. Peter was Mason for over fifty years, and had achieved the rank of Master Mason.

He entered military service during WWII, and rose in the ranks to become a Colonel in the Army. He was stationed in Belgium during the sixties with NATO, where he met his future Danish wife, Estrid Jonassen (Jonas), who worked at NATO as a code breaker. Peter taught at the War College in Carlisle, PA before retiring from the Army in 1970. He and Jonas moved to Hershey, Pennsylvania, where he wrote and produced in-



dustrial movies. They later moved to Middletown, Pennsylvania while Peter worked for the AMP Corporation. They moved to Bradford, New Hampshire in 1987 when Peter retired. The Cosgroves always lived in lovely country houses, with their beloved Springer Spaniels, and entertained their friends with wonderful din-

ners.

Peter had a life long interest in photography, following his father and brother. He photographed his own Christmas Cards every year, following a long tradition started by his photographer father, with original rhymes. In later years, he photographed scenes around New Hampshire and entered several competitions.

Peter's wife Jonas died in 2003. He is survived by his two nieces, Nancy Cosgrove Mullis of Newport Beach, California and Linda Cosgrove Burr, and great-niece Olivia Cosgrove Burr of San Rafael, California.

Cherie Nelson

Certified Public Accountant
Master of Science in Accountancy

Tax Preparation

Currently Offering Same Day Service

e-file

938-5000

75 West Rd

Bradford, NH

Real Estate Hints:

Real Estate Trends for 2005

by *Laura Hallaban*



At the beginning of each year, I pore over various industry articles to see what the final numbers were for the year just completed and to learn what I can expect in the year to come. Here are the statistics:

After four consecutive record years, home sales should ease but remain close to record levels, according to the National Association of Realtors. New-home sales were up 9.5 percent in 2004, coming in at a record 1.19 million, with 1.11 million sales expected this year. The figure for housing starts for 2004 is 1.94 million units, the best showing since 1978, and new construction is forecast at 1.87 million units this year. The population has grown, household formation is strong and sales should stay well above what was considered to be a healthy level in the late 1990s.

The rise in the national median existing-home price, which came in at 7.7 percent for 2004, is expected to increase 5.3 percent in 2005 to a median of \$192,800. As for new-home prices, the median should grow this year by 5.5 percent to \$227,200. A modest slowdown in home price appreciation is actually healthy for the market, still offering sellers a good return on their investment while keeping prices within reach for homebuyers. However, two recent studies indicate that median-income earners in half of the country's 30 largest metropolitan areas can't afford median-price homes in spite of still-low mortgage rates, and only about half of the homes sold during the third quarter of 2004 were affordable to median-income earners. As a result, buyers in the nation's priciest markets are going with interest-only or 100

percent loans in order to achieve homeownership and developers are turning more and more to condominium conversions in order to target the entry-level market.

Inflation is expected to remain modest with the Consumer Price Index rising 2.6 percent this year and the U.S. gross domestic product forecast to grow by 4.0 percent. While the economy in the last two years was driven by consumers, housing and defense spending, it will grow on the weight of business spending, along with some improvement in net exports. The unemployment rate should decline to 5.1 percent by the end of 2005 and inflation-adjusted disposable personal income is projected to grow 3.8 percent this year, while the Consumer Confidence Index should rise to 106 by the second half of 2005.

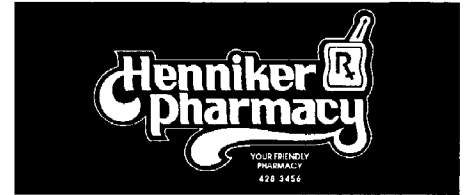
As far as mortgage rates go, the 30-year fixed-rate mortgage is expected to trend upward to 6.5 percent by the end of 2005, which is still quite low by historical comparisons. Outside of the last two years when the fixed-rate mortgage averaged 5.8 percent, you have to go back to the mid 1960s to see comparable mortgage interest rates. Also, the U.S. Federal Housing Administration hiked its maximum insurable mortgage amount by 7.8 percent for 2005, up from 3.4 percent last year. It is hoped that these new limits will create more construction, jobs and economic growth, resulting in an increase in home ownership.

So, it appears that the real estate market bubble that everyone expected to burst by now will elude us again in 2005.



Septic System Designs
Test Pits, Perc Tests
Site Assessments
Land Planning
Permitting

ROBERT C. STEWART, Jr.
938-2256 Main Street



927-4973

Route 114
North Sutton

ALL & AWL REPAIR

Small Engine Sales & Service
Tractors • Harness & Tack Repair
Art, Kirk, Lynne & Kris Chadwick

Stewart Agency Realtors has been in the Lake Sunapee Region since 1935. We are a family business spanning three generations providing real estate services to the surrounding area. Our long-established ties give us a superior working knowledge of the Dartmouth-Kearsarge-Lake Sunapee regions. We ensure you the most pleasurable experience in your personal real estate transactions. As members of the National Board of Realtors we can access the most recent properties listed on the market by all Realtors in New Hampshire.

Our services include a NH Certified Wetland Scientist and established land planners experienced in working closely with local zoning and planning boards. We are NH licensed septic designers accredited to provide complete specifications and site assessments. With over 20 years of ecological background, we bring to you a full package of land development skills.

**STEWART
AGENCY**

Main Street, Bradford
938-2255 or 938-2256



SELECTMEN'S MEETINGS

December 14, 2004

Roll Call: Peter Fenton, Selectman; Dave Pickman, Selectman Bruce Edwards joined the meeting at 5:10.

Appearances:

1. Ken Anderson met with the Board of Selectmen to request authorization to purchase a used bailer. Cost with installation and removal of the old machine was \$3600. Selectmen approved the purchase.

2. Steve Lucier met with selectmen to discuss purchasing a generator for the highway department. Selectmen approved purchase of \$1300.

3. Mr. Brian Wilcox met with selectmen and the road agent to discuss drainage problems on Marshall Hill/Water Street. Road Agent Steve Lucier will meet with Mr. Wilcox on December 15, 2004 to photograph the problem and discuss solutions.

The Board of Selectmen met with Brent Patrick Britton in a non public session to discuss property redemption issues per RSA 91A3. Time 5:45pm. Vote unanimous. Returned from non public session at 6:10pm. Redemption agreement reached with Mr. Britton.

The Board of Selectmen met with James Valiquet in a non public session to discuss personnel matters per RSA 91A3. Vote to go to non public unanimous. Time 6:10pm. Return from non public session at 7:30 pm.

Regular Business

1. Selectmen signed KAP lease for community center.

2. Accounts payable manifest reviewed and signed

3. Fire Department Warrant Article discussed.

4. Town hall roofing problem discussed. The roof has again begun leaking in the same location – to the right of the stage in the main room. Prices have been sought from area contractors. No decision will be made until additional prices are received.

Meeting adjourned at 8:00pm.

December 21, 2004

Roll Call: Dave Pickman, Selectman; Peter Fenton, Selectman; Bruce Edwards, Selectman Chair; Personnel: Cheryl Behr, Administrative Assistant

Appearances:

1. Dick Moore discussed budget matters with the selectmen, saying his work time

on town property was more than submitted. The selectmen agreed to add twenty five hours.

2. Mike Croteau from SEA Engineering discussed the construction design bid, the engineering bid and project management for the Center/Cheney Hill Road areas. The selectmen pressed for a quote covering expenses for work on each road in order to write a warrant article to bring before the town meeting. They would like to get everything in order for a bond issue in March and time to get a bid in August. SEA said they would come back with the requested preliminary cost information before the warrant article deadline.

3. Al Circosta inquired about the potential use of a separate lot to park a travel trailer year round for an extended time, and to add water and septic on said lot. Cheryl advised the Dept. of Revenue will begin taxing parked travel trailers this year, as real estate. The selectmen will check the ordinances further

Communication from the Lake Sunapee Snowmobile Club asked permission in writing from the selectmen for the use of part of the trail system on class V1 roads, and including Forest St., Day Pond, Jewett, Liberty Hill, Rowe Mtn., Smith Rd., and right of way on West Road Johnson Hill, and Forest St. The State covers liability, but selectmen want to check that a non-member of any snowmobile club is also covered.

The Planning board requested an encumbrance of the unspent funds for the circuit rider for the 2005 year which would run until after town meeting.

The Town Hall roof is leaking again, and there has been one repair bid received.

Selectmen signed requests to Trustees of the Trust Funds for emergency repair reimbursements, included was the BACC elevator repair, and the lightning damage to the Town Hall alarm system.

Tax abatements were signed.

Accounts payable manifest signed.

A communication from Neil Cannon regarding the loan sharing with White Mtn. Imaging.

The Fire Chief Mark Goldberg, Building Inspector/Code Enforcement Officer Chip Meany, Steve Manley, builder, and RCS Design, discussed procedures for compliance for the renovation of the Thistle and Shamrock. The selectmen feel they

need an update from all parties on the construction which started as a demolition permit. All parties agree the site plan is missing, Mr Manley expects to have drawings for sprinkler systems within two weeks. The Building Inspector warns the occupancy permit might be held up because of energy codes and the septic plan, which must be accepted and approved by DES. This would jeopardize Mr Manley's occupancy permit. The site plan is scheduled to go to the Planning Board meeting in January.

Mark Goldberg discussed some fire department equipment request.

Selectmen received a communication about a tax lien complicated by deed and income. Individual is to pay up within six months.

Meeting adjourned at 7:48 p.m.

January 5, 2005

Roll call: Peter Fenton, Selectman; Bruce Edwards, Selectman Chair; Dave Pickman is on vacation. Personnel: Cheryl Behr Minutes of December 21 accepted.

Appearances:

1. Marcia Keller and Bill Glennie discussing monies for Circuit Rider for the Planning Board for the ensuing year. There was also discussion about upgrading the town hall meeting room for more professional office space for the Planning board. The Selectmen want to be positive future elections can be held at the school before proceeding with any partitioning of the room.

2. Bill Glennie reported the State Traffic Enhancement program will start another ten year round in the fall.

continued on page 11

Bradford Board of Selectmen

Bruce Edwards, Chairman

Peter Fenton

Dave Pickman

Cheryl Behr, Admin. Assistant

Office Hours:

Monday–Thursday, 8:00 am–noon,
1:00–5:00 pm; Friday, 8:00–noon

Telephone: 603-938-5900
Meetings 1st & 3rd Tuesdays, 5pm

Selectmen *continued from page 10*

3. Building Inspector Chip Meany asked for a twenty hour secretary per week (permit clerk) to review building permits, collect the data, notify people at various stages of the permit process, and file the paperwork associated with the heavier load of requirements. He also suggested an information session with the Police, and Fire departments, Planning Board, and the Board of Selectmen. He will present a format from the beginning application to the certificate of occupancy to encourage a smooth flow with no steps missing.

4. Brooks McCandless of the Conservation commission presented a warrant article to grant the Commission 100% of the Current Use penalties, up from their present 50%. Cheryl said this years 50% allowance (tax year 2004) to the Commission (50% goes to the town general fund) came to \$4040.00 with and additional \$3225 from 2003. As more subdivision land comes out of current use, the figures will go up. Selectmen requested the petition signatures for the article.

Accounts payable manifest reviewed.

The bond issue hearing will be scheduled.

Cheryl requested thought be given to new or different town facilities.

Meeting adjourned at 6:16.

Senior Council

The Senior Council of Bradford Area Community Center will sponsor a trip to the "Rainbow Chinese Restraunt" in Concord for their February gathering.

All Seniors in the area are invited to join the party by meeting at the Community Center parking lot at 11:30 am on February 12 for car pooling to Concord.



First Baptist Church News

From Lynne E. Hubley

Women's Christian Guild: Ladies will meet at the church on Friday, February 4, at 11:30 am for a potluck luncheon. They are invited to bring a photograph of when each was a child as well as a "happy childhood story" to share.

Fourth of July Fair Meeting: Immediately following the Worship Service on Sunday, February 6, there will be a planning meeting for the 2005 Fourth of July Fair. Anyone who is interested in helping is encouraged to attend this brainstorming meeting.

Lenten Praise & Worship Services: Beginning on Wednesday, February 9, and every Wednesday during Lent, we will have a Soup and Bread dinner at 6:15 pm followed by a Worship service at 7:00 p.m. The services will include Rick Warren's purposes from his book *The Purpose Driven Life*. The services will also have lots of singing, prayer and a meditation.

Bible Study: Beginning Sunday, February 13, there will be a Bible Study at the home of Fred & Lynne Hubley. The Study will be from 6:30 - 8:00 pm. We will be discussing how the Bible came about and encourage all levels of Bible students from those who have never studied to those who have studied it for years. We will be looking at the Gospel of Mark. Refreshments will be served.

Food Pantry: The February distribution date is Wednesday, February 16, from 6:00 - 6:30 pm. Food can also be obtained by calling the church office at 938-5313.

Men's Fellowship: The men will have their fellowship night on Thursday, February 17, at the home of Fred & Lynne Hubley beginning at 7:00 pm. It's an evening of pool, refreshments and fellowship.

Youth Group: Youth in grades 5-8 are invited to come to youth group which has a new name: "The God's Squad". There will be a meeting on Tuesday, February 22, from 6:30 - 8:00 pm at the Fisk House. The theme for the evening will be "Random Acts of Kindness." Refreshments will be served. We will also be sledding some time during February. We will call each youth when the snow conditions are good.

Church Family Tropical Cruise: On Saturday, February 26, at 5:00 pm. We will meet at the church for a fun evening. The Church will be transformed into a cruise ship. There will be a dinner served by American Baptist Women's Ministries followed by a mini-talent show. After the show, children will enjoy games and crafts and there will be dancing for the adults. There is no charge for the evening.

Men's Sunday: The men will conduct the Worship Service on Sunday, February 27. The Executive Minister of The American Baptist Churches of Vermont and New Hampshire will preach the morning's message. Worship is at 10:00 am.



Ayer & Goss
FUELS



**24 HOUR SELF SERVICE
GASOLINE & DIESEL PUMPS**

Serving the area's heating needs for more than 60 years

FUELOILS & LPGAS / COMPLETE HEATING SERVICE


938-5335

Route 114, Bradford • Hall Ave., Henniker...428-3333


Custom Homes
 BY
Maple View
 DEVELOPMENT

STARTING AT
\$260,000

BRADFORD




Ready to move in at the end of February! Large family room, 3 b/r, 2.5 bath. Some views, easy commute to Concord. Choose your own colors, counter tops. Almost 2 acres. \$289,900.



Office: 526-4000
Cell: 748-0162

THE GALLERY #103, 45 NEWPORT ROAD, NEW LONDON, NH 03257
 (603) 526 4455 ~ Fax: (603) 526 4462




Letters to the Editor

Dear Editor:

As a landowner in Bradford, NH, I am very concerned about the new proposed amendment for re-defining what constitutes a Buildable Acre. It appears that the amendment is further limiting land to qualify as a Buildable Acre by adding additional restrictions to our land. Our land already needs to be 2 acres in size. Now the newest amendment, depending on the land characteristics, will need to be 3 or even 4 acres in size to comply with the newest restrictions.

It should also be noted that all property not meeting the newest requirement will inherently be under valued by virtue of not meeting the new standard. Citizens should also be concerned that existing land being able to be subdivided is truly in question.

The ambiguity in the proposed zoning amendment leaves considerable interpretation as to what constitutes a Buildable Acre. It seems as though unless you have a flat lot and no wetlands, your lot may not meet the proposed amendment.

All citizens of Bradford need to vote "no" to proposed zoning amendment and rely on the minimum 2-acres requirement as a restriction which already exceeds neighboring towns requirements for what constitutes land suitable for a single family dwelling.

Donna Duren

To attend any of these tours, please call the SAU office at 526-2051. You can also register for an evening tour by using the sign-up sheet located at the Principal's office of your local school.

Please take this opportunity to make an informed decision about the future of your middle school.

Thank you.

Mark Fairbank

Kearsarge Regional School Board - Bradford

To Voters of the Kearsarge District: I hope that when we vote on the school district warrant article to change the bond approval requirement from 2/3's to 60% of those voting, we look at what is being asked for. It should not be the "them against us" attitude, but gaining the overall support by justifying the need. What seems to be at stake is the democratic process that has long used the 2/3rd level that signifies overwhelming support. Let us not lose this protection.

Looking back at my own term on the school board, the alteration to the high school, the adjustment of the apportionment formula, and the retention of the seven town district all met with at least this level of approval. If the need is there and the voters are convinced, then 2/3 is not a problem.

Dick Keller

Editor:

On March 8th, voters of the Kearsarge Regional School District will decide whether or not to build a new regional middle school in Sutton. This school is designed to be centrally located and replace the present facility located in New London. In order to enable voters an opportunity to view the situation first-hand, the school district has organized tours on the following dates:

- Wednesday, February 2 1:00 PM
- Thursday, February 10 9:00 AM
- Wednesday, February 16 7:00 PM
- Saturday, February 19 9:00 AM
- Tuesday, March 1 12 Noon
- Wednesday, March 2 7:00 PM
- Saturday, March 5 9:00 AM




HENNIKER VETERINARY HOSPITAL

PROFESSIONAL ASSOCIATION
 Small Animal & Equine Practice

Alyssa J. Brust D.V.M.
Robert A. Brust D.V.M.
Jill R. Patronagio D.V.M.
Freya Moscovitz, V.M.D.

24 Hour
 Emergency Service
 House Calls Available

Henniker,
 New Hampshire
 603-428-3441



Bradford Rescue Squad

My wife and I are fairly new to Bradford, each of us having been brought up in different small towns in Pennsylvania. Jess was accustomed to the steady clip-clop of Amish buggies going by her home. I was used to coming home after an 'adventure' elsewhere in my hometown, only to find out my mother already knew what I had been doing, and then receiving the oft-repeated metaphor that there were many ears in the cornfields surrounding us.

While we may not have appreciated the perceived differences of others or the confines of all-knowing and all-telling neighbors at the time, in retrospect these are some of the qualities of life we all look for: a rhythm, a sense of security, and the knowledge that while you may not know everyone in town, you are not alone.

Since moving to Bradford, Jess and I have heard the anxious and sometimes anguished call for additional volunteers from the Bradford Rescue Squad. If ever there is an important community asset, it's having trained emergency personnel and emergency transportation close at hand and ready to act when we need them. Without the volunteers on the Bradford Rescue Squad, you would have to wait for the next closest ambulance to provide life-saving treatment and transportation to a hospital. Depending on local availability this could mean waiting for ambulance transportation from Newport, New London, Henniker, or Hopkinton. This could very well be the difference between life and death.

Our contribution back to the community is volunteering with the Rescue Squad. Jess became an Emergency Medical Technician, I've made the modest gesture of driving. This effort helps, but does not resolve the shortage of volunteers needed to assist and protect adequately the residents of Bradford and surrounding communities.

The Bradford Rescue Squad is available 24 hours a day, 7 days a week, and is staffed by fewer than a dozen volunteer EMTs and drivers. This organization and its volunteers have fulfilled their social contract to the citizens of Bradford and surrounding towns since 1972, always there for you when you needed emergency care. Now, the Bradford Rescue Squad and your community need you. They'll even help you to pay for emergency medical technician (EMT) training. This is training that could not only help



Photo by Susann A. Janick

This recent shot of the inside of the Bradford Historical Society is testament to its need for a new space. Currently BHS presentations are well-attended but cozy. The building is cold and in disrepair. Eventually it will be unworthy of storing the archives and collections that have been handed down to this long standing organization. Volunteers will draw up a reorganization plan in the spring so look to the *Bridge* for announcements to recruit volunteers for upcoming projects. If you want more information about the Bradford Historical Society call, Milly Kitredge at 938-5386.

your neighbors throughout town as part of the Rescue Squad, it will provide you with a greater sense of self-confidence and readiness in other emergencies.

We need your help so that we can help you.

Interested? Please call Deborah Bede for more details at 938-2393.

It's your call.

Bryan Ayars
2 Old Warner Road
Bradford, NH

Your Editors would like to invite comments and suggestions for making this truly a neighborhood newspaper.

Would you like to see more minutes of meetings (we'll need stringers to cover the events), more pictures of events, more listings of area events? What is important to you?

bradfordbridge@mctelecom.com
938-2692

Bradford Excavating, Inc.



COMPLETE SITE WORK:

Rock & Stump, Foundation, Septic, Road Construction, Fill, Stone Retaining Walls



Servicing Bradford, Warner, Sutton, Newbury, Henniker, and surrounding towns.

Offering:

Professional Service, up to date Equipment with Experienced Operators
Certificate of Insurance (upon request)

938-5664 Bradford, NH

Bradford Area Senior Center February Calendar

TUES. FEB. 1

10:00 am Bradford Quilting Bees quilting the Senior Center's new fundraising quilt.

12:00 pm Senior Community Dining serves Salisbury Steak, Mashed Potatoes, Mixed Vegetables and Cake for dessert.

THURS. FEB. 3

Senior Center 10:00 am Foot Massage with Betty Perron. Betty, a local massage therapist, will be at the Bradford Senior Center the first Thursday of each month to give foot massages. Donations are appreciated.

12:00 pm Senior Community Dining serves Meat Loaf, Broccoli Florets, Brown Rice, Cookie.

FRI. FEB. 4

Senior Center 8:45 am Strong Living Exercises

Senior Center 10:00 am – National Wear Red Day Celebration. Angela Wampler, clinical coordinator for cardiac and pulmonary rehabilitation at Concord Hospital, will speak about women and heart disease. Wear red, learn about women's heart health, and enjoy a heart healthy brunch and fellowship. Free give-a-ways, door prizes and 50/50 Raffle. Call 938-2104 by Jan. 26th to reserve space for the brunch. Space is limited.

11:30 am – Heart Healthy Brunch is served. Menu includes Roast Pork with Apples, Turkey Ham, Egg Beaters with Veggies, Pickled Beets, Red Potatoes, Yogurt Parfait with Granola, Fruit and Pastries. Everyone in the community is invited.

MON. FEB. 7

Senior Center 8:45 am Strong Living Exercises

Senior Center 10:00 am Ceramics with Doris. Bus departs 9:45 am.

12 Noon a delicious Senior Community Luncheon of Stuffed Cabbage, Whipped Potatoes, Peas & Carrots, Wheat Bread and Fudge Sticks for dessert.

TUES. FEB. 8

Senior Center 10:00 am Bradford Quilting Bees

12 Noon Senior Community Dining serves Pork Cutlet, Applesauce,

Scalloped Potatoes, Garden Blend Vegetable and Pudding for dessert.

THURS. FEB. 10

Senior Center Today we celebrate February birthdays. Birthday participants receive a FREE meal and gift! Make your reservation by Feb. 4th to receive your birthday gift. We will also celebrate Washington and Lincoln's birthday. Come and enjoy the fun!

12 Noon Senior Community Luncheon serves Sliced Turkey and Gravy, Cranberry Sauce, Sweet Potatoes, Stuffing, Peas & Onions and Blueberry Crisp for dessert.

FRI. FEB. 11

Senior Center 8:45 am Strong Living Exercises

10:00 am – 11:00 pm "Continental Breakfast Café". Fresh fruit, pastry, cereal, juice and coffee every Friday.

10:00 am – 12:00 pm Dave Poisson from the "Fixit Program" will be available to discuss your personal home repairs or to answer any questions.

MON. FEB. 14

Senior Center 8:45 am Strong Living Exercises

Senior Center 10:00 am Ceramics with Doris. Bus departs 9:45 am.

TUES. FEB. 15

Senior Center 10:00 am Bradford Quilting Bees

12 Noon Senior Community Dining serves American Chop Suey, Waxed Beans, Italian Bread and Make Your Own Brownie Sundae for dessert.

Today is our Valentine's Day Celebration! Goodies, prizes and 50/50 Raffle. Bring your favorite message to share as a valentine.

THURS. FEB. 17

11:00 am – 12:30 pm Blood Pressure and Foot Clinic with Personal Touch Home Health Care. This FREE clinic is sponsored by the Bradford Community Center and is open to everyone in the community.

12 Noon Senior Community Dining menu serves Roasted Pork Loin and Apples, Mashed Potatoes, San Francisco Blend Veggies and Jello for dessert.

12:30 pm Service Link gives presentation on the current status of prescriptions and tell us all the options available. She will also be available for any questions or help with applications for the Medicare Drug Prescription Card. Please call 938-2104 and we will schedule an appointment for you that day.

FRI. FEB. 18

Senior Center 8:45 am Strong Living Exercises

10:00 am – 12:00 pm "Continental Breakfast Café". Fresh fruit, pastry, cereal, juice and coffee every Friday.

MON. FEB. 21

President's Day Holiday. Senior Center is closed.

TUES. FEB. 22

Senior Center 10:00 am Bradford Quilting Bees

12 Noon Senior Community Dining serves Crispy Cod with Lemon, Scalloped Potato, Sliced Carrots, Roll and Lemon Pudding for dessert.

THURS. FEB. 24

12 Noon Senior Community Dining menu serves BBQ Chicken Leg, Western Mashed Potato, Creamed Corn, Biscuit and Devil Dog for dessert.

FRI. FEB. 25

Senior Center 8:45 am Strong Living Exercises

10:00 am – 12:00 pm "Continental Breakfast Café". Fresh fruit, pastry, cereal, juice and coffee every Friday.

MON. FEB. 28

Senior Center 8:45 am Strong Living Exercises

Senior Center 10:00 am Stitching Circle. Bus departs 9:30 am.

12 Noon Senior Community Dining menu serves Pork Sausage Links, Applesauce, Whipped Potato, Corn Niblets, Wheat Bread and Brownie for dessert.

All programs are open to the public.
Any questions?? More information??
Call Sandi at 938-2104



Bradford Area Community Center February Calendar

TUES. FEB. 1

Fuel Assistance Applications – 9:00 – 12:00 pm - Call 456-2207 for appointment

Brownies – 3:00 – 5:00 pm

Yoga Class – 6:00 – 7:15 pm - Call Fran at 456-3099 to register

Kearsarge Area Preschool – 6:30 pm - meeting

WED. FEB 2

Yoga Class – 9:30 – 11:00 am

Thurs. Feb. 3

Foot Massage – 10:00 am with Betty Perron

FRI. FEB. 4

Computer Class – 10:00 -12:00 am. Call Bev at 938-2996 for information

SAT. FEB. 5

Writing Group – 11:00 am – 1:00 pm

MON. FEB. 7

Bridge Group – 1:00 – 4:00 pm
Tues. Feb. 8

Bradford Women's Club – Board meeting 9:30-11:00 am

Yoga – 6:00 – 7:15 pm Call Fran at 456-3099 to register

WED. FEB 9

Yoga Class – 9:30 – 11:00 am

THURS. FEB 10

Bradford Area Community Center – 5:30 – 7:00 pm Governance Board Meeting

FRI. FEB. 11

Computer Class – 10:00 – 12:00 am
Call Bev at 938-2996.

SAT. FEB 12

Senior Council – 1:00-3:00 pm

MON. FEB. 14

Bridge Group – 1:00 – 4:00 pm

Junior Girl Scouts – 6:00 – 7:30 pm

Rural Heritage Connection – 7:00 – 9:00 pm

TUES. FEB 15

Fuel Assistance Applications – 9:00 – 12:00 am by appointment. Call 456-2207
Bradford Women's Club – meeting 1:00-3:00 pm

Brownies – 3:00 – 5:00 pm

Yoga Class – 6:00 – 7:15 pm – Call Fran at 456-3099 for information

Kearsarge Area Preschool - 6:30 pm meeting

WED. FEB 16

Yoga Class – 9:30 – 11:00 AM

Parks & Recreation – 6:30 – 8:00 PM

FRI. FEB. 18

Computer Class - 10:00 am – noon

SAT. FEB. 19

Writing Group – 11:00 am – 1:00 pm

MON. FEB. 21

Bridge Club- 1:00-4:00 pm

TUES. FEB. 22

Yoga Class – 6:00-7:15 pm – Call Fran at 456-3099

WED. FEB. 23

Yoga Class – 9:30-11:00 am– call Fran at 456-3099 for information

THURS. FEB 24

Blood Pressure & Foot Clinic 11:00 am–12:30 pm –no appointment needed –Free

FRI. FEB 25

Computer Class – 10:00 am - noon

MON. FEB 28

Bridge Club – 1:00 – 4:00 pm

Junior Girl Scouts – 6:00-7:30 pm

For scheduling activities at the BACC call the Director, Jarna Perkins at 938-6228 There is available time and space to accommodate all age groups at the BACC.

- For details or questions regarding **Meals on Wheels** or **Senior Programs**, services or transportation, call the Senior Center Program Manager, **Sandi Bandieri** at 938-2104
- Kearsarge Area Pre-School; for info, contact **Fred Hubley** at 938-5521

General Information - call the Administration Office 938-6228.



Senior Lunch: Mondays, Tuesdays, and Thursdays
Lunch is served at 12 noon. Join us for a delicious meal and fellowship. You might be surprised who you'll meet!
Advance reservations are appreciated.
Continental Breakfast Cafe Fridays 9:00 - 11:00 am, all are welcome.



Food For Thought

Mike Quinn

During the past year, a lot of people have been trying to convince you and me what constitutes appropriate content on television and radio.

You can thank Janet Jackson, in part. Broadcasters were under pressure from the Federal Communications Commission for the content they aired long before the 2004 Super Bowl halftime show "wardrobe malfunction." Janet just list the match and touched it to the fuse.

Let's be clear: the halftime stunt was completely inappropriate. A program with a TV-G rating, such as an NFL football game, should be perfectly appropriate for my 14-year-old and 8-year-old to view. In this particular case, the network deserved to be fined for its carelessness.

It is a fact that television has gotten edgier because of First Amendment protections. But freedom of speech comes with a price: personal responsibility.

In this culture of finger-pointing, as soon as we see or hear something that doesn't meet our personal standard of what is appropriate, we run to the government seeking enforcement instead of taking responsibility to tune it out.

When children are involved, it is even worse. However, there is no reason to abandon hope: there are clearly-defined ratings, V Chips and reasonable bedtimes available as parental tools.

Here is the real problem: many parents have abdicated their responsibility and are ignorant of what their children are viewing on television.

So what do they do? Go complaining to the FCC, expecting it to do their job for them. They call it inappropriate content and the deterioration of morals. I call it plain old laziness.

You and I may disagree on what is appropriate content for mature adults or even kids. We ought to agree that we own the responsibility for ourselves and our children, not Washington.

Mike Quinn is a writer living in Bradford. Your comments are welcome at michaelquinn@tds.net.

EVERY FRIDAY
COFFEE HOUSE
AT WOODY'S RESTAURANT - SUNAPEE HARBOR
LIVE ACOUSTIC MUSIC - STORY TELLING - ETC.

FRIDAY NIGHTS - 7:PM

Fri, February 4th
Benjamin Townsend
Then...
Shawn Chaves
Both local talent from Sunapee

Fri, February 11th
Gary Robinson
Longtime Local Professional Playing Classical Guitar

Fri, February 18th
High School Night
Excellent talent from the area's local schools
Come out and support our local music!

Fri, February 25th
Open Mic
Getting popular, don't miss out!
Come by and play, or listen...with a possible jam at the end

FRIDAY NIGHTS - 7:PM

ALL AGES WELCOME ~ COME ONE COME ALL

- ☞ A NON SMOKING ENVIRONMENT
- ☞ ENCOURAGING LOCAL TALENT
- ☞ A FRIENDLY ENVIRONMENT
- ☞ ORIGINAL WORKS ENCOURAGED
- ☞ FOOD AND BEVERAGE AVAILABLE
- ☞ HOSTED AT WOODY'S RESTAURANT
- ☞ ROTATING ACTS WEEKLY, REG. OPEN MICS
- ☞ WE PASS THE HAT FOR THE MUSICIANS
- ☞ INTERESTED IN PERFORMING/VOLUNTEERING?

Call 603-763-2668 or 4632; for who's playing, call Woody's: 763-3400
CoffeeHouse@MountainSpirit.Org

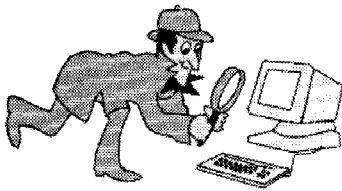
Carpet ♦ Vinyl ♦ Ceramic Tile ♦ Hardwood ♦ Area Rugs

NEW LONDON ♦ FLOORCRAFT

and Creative Kitchens

Carl & Gail Olson
Route 11, Wilmot

526-2600
800-870-4646



The Savvy Internaut Suggests

Shopping on the Web

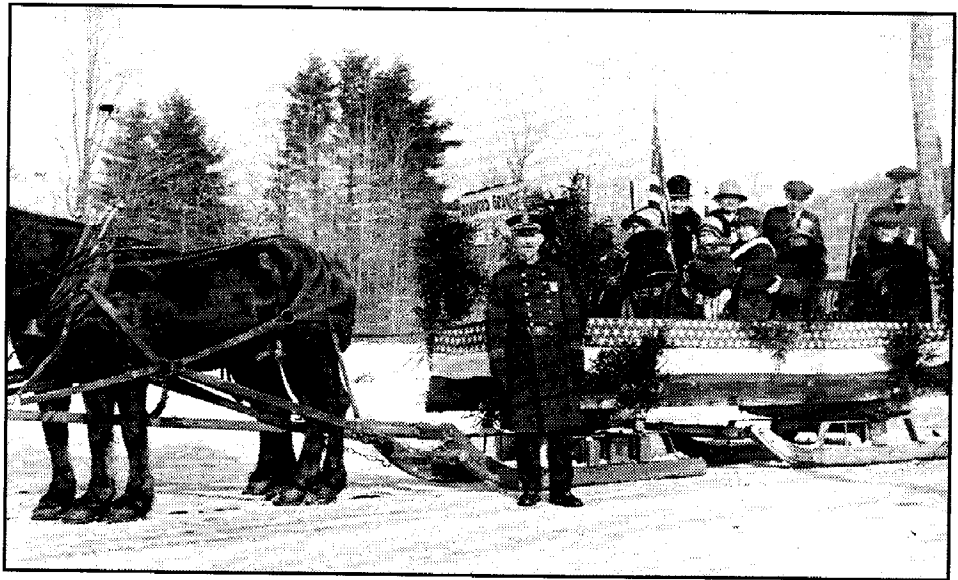
Last month I described the relative safety of shopping on the Internet with a credit card. Never use cash or checks. Federal law limits fraud losses with a credit card to \$50; this is not the case with cash or checks. This month I discuss where I actually do my shopping.

Froogle (a combination of frugal and Google) is available at froogle.google.com. Here you will find actual images of pages from many popular mail order (and Internet order) catalogs. You can do a search for a particular item. And of course there is regular google.com, which indexes several billion Web pages. Google carefully separates commercial sites and marks them as advertisements, but you want commercial sites when you are in a buying mood. Another one of my favorites is overstock.com. Overstock is the Building 19 of the Web. Lots of brand new remaindered and otherwise discontinued items are available, often at prices about 50% of their regular prices. I have bought very fine sheets and an expensive altitude-measuring watch from Overstock. One of the features of Overstock is the button called Worldstock which brings up arts and crafts from many countries around the world.

There are a number of shopping bots, a word derived from "robots." These are automatic programs that go out onto the Net and comparison shop for items. But be aware that companies pay to be listed by a particular bot. Thus, not all purveyors will be listed, but the larger companies will usually be listed for a particular product. One bot I particularly like is fatwallet.com. You can accrue a small reward balance of 2 to 5% if you start at Fatwallet and then go to the site. (I accrued 87 cents last year; I gave it to the Red Cross for tsunami relief. Big donor, me!) Fatwallet also has a forum site where shoppers can discuss various vendors. Other bot sites are shopping.com and shopping.yahoo.com. I have yet to find a bot that includes shipping charges. Shipping

Then...

by Milly Kittredge



Bradford Winter Carnival, 1929

On the double runner, the Bradford Grange members, prepared for the weather. The police Chief is Dell Stevens. The Winter Carnival was a big celebration with parades, outdoor contests, Carnival Ball and Queen, and food.

charges can and do vary widely, so the lowest quoted price is not necessarily the best deal.

Before you complete an online transaction, you should check for online coupons. Generally, sites like amazon.com or bestbuy.com will have coupon offers. But you may not find these special deals by going to their sites directly. Do a Google search on the name of the company, e.g. Amazon, plus the words "coupon codes" or "coupon code." Note the quote marks; they are part of the search string. And be sure to do a search on both the singular and plural. If you find an appropriate coupon code, you can enter it on the online form for the company before checkout. Two sites that specialize in coupons are bargainboardwalk.com and couponmountain.com.

Do you have a favorite shopping site or bot to recommend? Contact me: billhatt@iamnow.net.

Junior Division Poetry Contest

The Poetry Society of NH is sponsoring a spring Junior Division Poetry Contest for NH students in grades 4 through 8. The top ten poems will be published in the PSNH quarterly magazine, *The Poets Touchstone*. Winners will receive a copy of the quarterly and a certificate to recognize their efforts.

There is a \$1 entry fee per poem and guidelines to be followed. For a copy of those guidelines, send a self addresses business size envelope (SASE) to the Contest Coordinator, Barbara Bald, 21 Finethy Road, Alton, NH 03809.

The contest deadline is April 1, 2005.

Pat Frisella



Who Are We?

Some Bradford Statistics from the 2000 Census

POPULATION	BRADFORD		NH	US
	Number		Number	Number
Total Population	1,454			
Square miles (land)	35.32			
Population per square mile	41.17		137.80	79.56
GENDER	Number	Pct	Pct	Pct
Male	726	49.9	49.2	49.1
Female	728	50.1	50.8	50.9
AGE	Number	Pct	Pct	Pct
15 or younger	298	20.5	20.8	21.4
16-24	173	11.9	12.6	13.9
25-44	392	27.0	30.9	30.2
45-64	407	28.0	23.8	22.0
65+	184	12.7	12.0	12.4
Average age (years)	Number		Number	Number
	37.96		36.87	36.22
RACE AND ETHNICITY	Number	Pct	Pct	Pct
White	1,414	97.2	96.0	75.1
Black or African American	4	0.3	0.7	12.3
American Indian & Alaska native	5	0.3	0.2	0.9
Asian	2	0.1	1.3	3.6
Native Hawaiian & other Pacific Isl.	0	0.0	0.0	0.1
Some other race	4	0.3	0.6	5.5
Two or more races	25	1.7	1.1	2.4
Hispanic or Latino	16	1.4	1.7	12.5

Note: Hispanic ethnicity is a separate data category from race. This number should not be added to race totals.

Sources: U.S. Census Bureau, 2000 Census; ePodunk (www.epodunk.com)

New Discoveries From The World Of Franklin Pierce On Display

Three important new objects that shed light on the life of Franklin Pierce have been placed on display in the foyer of the Museum of New Hampshire History at 6 Eagle Square, Concord. All three items were almost unknown to historians who study the life of Franklin Pierce before the opening of Franklin Pierce: Defining Democracy in America this year. They include a hotel register from 1864 where Pierce registered with his ailing friend Nathaniel

Hawthorne. The great writer was so weak that Pierce had to sign his name for him. Hawthorne died the next day. A rare photograph (or Ambrotype) of Mrs. Franklin Pierce's aunt Abigail A. Means, who took on the role hostess in the White House while her niece and friend, Jane was in mourning. And, a telegraph message print from 1852 that was the first news received in New Hampshire of Pierce's surprise nomination by the Democratic convention.

Events

The Fells, Route 103A, Newbury, NH

A Fascination with Ferns

Tuesday, February 8, 10 am to noon at The Fells Gatehouse.

How are ferns different from flowering plants? How does one identify different ferns? What are the most common ferns in our area? Instructor Sarah Schwaegler will answer these questions and teach us how to use a fern key. Bring a hand lens if you have one. Registration requested at 763-4789. \$8 members; \$10 non-members. Information at: (603) 763-4789

MainStreet BookEnds 16 East Main Street Warner, NH 603-456-2700

www.mainstreetbookends.com
bookends@conknet.com

Friday, Feb. 11, 7pm Warner Historical Society presents an evening of Storytelling and Tasting of Maple Sugaring In Warner Past & Present

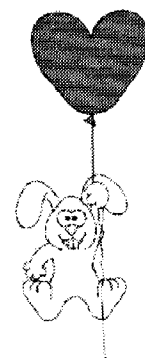
Friday, March 4, 7 pm Warner's Pulitzer Prize Winning Poet Laureate Maxine Kumin presents her newest book *Jack and Other New Poems*.

Sunday, March 6, 1 pm Join Us in The Gallery for a Special Afternoon with a few Hopkinton authors discussing & signing their books:

John Archer *Walking Backwards Towards Old Age; Thoughts in Verse*. Born in 1908, French teacher at St. Paul's, WWII veteran and father of four continues to have much to share with wisdom and humor.

Ann McLane Kuster *The Last Dance; Facing Alzheimer's with Love & Laughter* ~ Memoir by daughter of beloved State Legislator Susan McLane.

Marjorie Noon *The Task and the Burden* ~ Epic novel of WWII as told through the eyes of one who lived it.



Outside

by J. Ann Eldridge

February trees. They don't go south for the winter. They don't bury themselves beneath ponds with frogs and turtles. Contrary to a popular notion they aren't 'dead' in winter, coming 'alive' in spring. All living things must protect themselves from freezing here. Avoid or tolerate. Absent yourself from the weather or figure some other way of preventing the water in your very cells from freezing, expanding, breaking apart the fragile cell walls and tossing all into a final confusion.

The core of a tree, the heartwood is dead. Cells that once were living are now left empty and rigid as the tree has grown, leaving its center remaining as structural support. The layer surrounding this is the sapwood - some living and some dead cells. This is where the traffic in water and soil nutrients happens. The next layer of cells called the phloem is where food prepared in the leaves makes its way down to the roots. Outside of this continuously grows the cork or bark, the outermost layer being cells which are dead but protective so.

The trick is to keep frost from interrupting these pipelines. The answer appears to lie in an ability to shuffle excess water into the empty dead cells and into the spaces between cells when necessary. Living cells can also transform some of their sugars into a form of antifreeze to prevent cell wall breakup and to preserve them from dehydrating or drying out completely. Evergreens have an edge on the hardwoods in that they can continue to photosynthesize on warmer winter days. Their resinous pitch probably has some use as an anti-freeze/anti-dehydrating substance.

"Frost crack" is another problem winter trees have to contend with. On those bright sunny days with the sun striking the southern sides of trunks the surface temperature of the bark of dark-colored trees can easily reach 70 degrees even on a below zero afternoon. Like most mat-

ter, bark expands when it heats up. As night falls and the temperature drops the surface bark contracts much more quickly than the now-warmed and somewhat insulated inner wood. The outer bark may crack open as it shrinks because of this, and each successive occurrence may cause the crack to work deeper and deeper into the tree. Many of our local trees manage to adapt to this by having bark that is ridged, plated or scaly. Like fins on a radiator this dissipates excess heat rather than transferring it into the tree wood. Beech, birch and poplar cope by having bark which is light-colored, reflecting the sun's heat rather than collecting it.

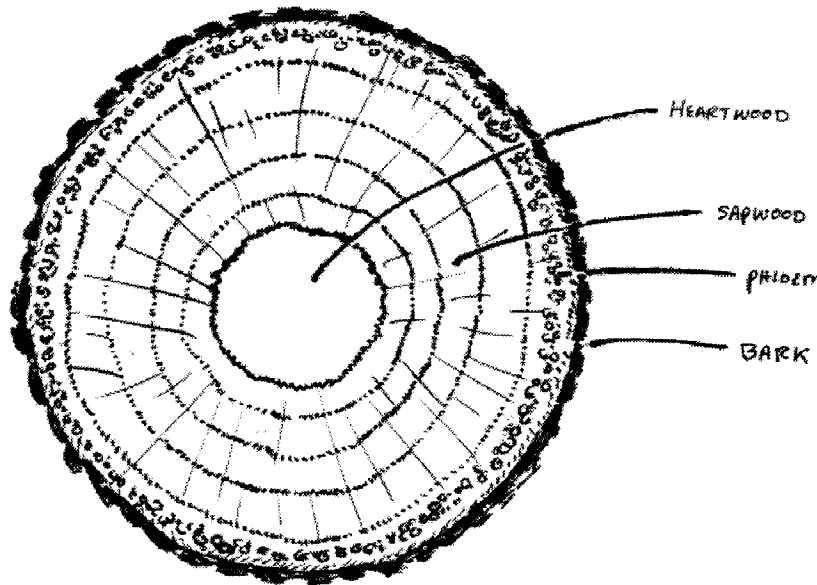
As I type this we are having another warm spell. Green spaghetti sap lines are appearing. Why does syrup production need cold nights and warm days? Is it merely a

matter of putting a hole in a tree in spring? Why not all winter? Or summer? Trees are still living and breathing all year. Their live cells are still respiring, giving off carbon dioxide. CO₂ goes into solution in cold temperatures, that is, it dissolves in water/sap. As the temperature warms up the CO₂ returns to a gas that puts the sap under pressure and forces it out the spiles. Imagine opening a can of soda. The cycle of cold nights, warm

days creates a convenient pumping action for those who collect it. That is until the sap loses its winter-stored sugars and begins to taste like something quite different as the season progresses..

One other thing I learned recently about the new-cut green maple, birch and poplar I was tossing a few weeks ago...trees can be heavier in winter. They can have a higher water content without the transpiration of leaves. So maybe it wasn't just my aging back.

For a good time read Tom Wessel's book *Reading the Forested Landscape*, at the Brown Memorial Library.



February Calendar

TUESDAY, FEBRUARY 1

Selectmen, Town Hall, 5:00 pm
ZBA, Town Hall, 7:00 pm., if there is an agenda. Call 938-5386 to confirm.
Public Hearings, Town Hall, 7:00 pm

MONDAY, FEBRUARY 7

Cemetery Commission, Town Hall, 10:00am
Rural Heritage Connection Meeting
7 pm, Bradford Area Community Center
Library Trustees, Brown Memorial Li-
brary, 7:00 pm

TUESDAY, FEBRUARY 8

Planning Board, Town Hall, 7:00 pm

MONDAY, FEBRUARY 14

Rural Heritage Connection, BACC,
7:00pm

TUESDAY, FEBRUARY 15

Selectmen, Town Hall, 5:00 pm
Conservation Commission, BACC, 7:30 pm

WEDNESDAY, FEBRUARY 16

Parks & Recreation, BACC, 6:30 pm

FRIDAY, FEBRUARY 18

Book-to-Movie discussion, *Gaudy Night*,
BML, 7:00 pm

TUESDAY, FEBRUARY 22

Planning Board, Town Hall, 7:00 pm

Classifieds

Need help with your paperwork/book-keeping? 20+ years experience thru trial balance (A/R, A/P, Payroll, Bank reconciliation). References available. Will work at your office or mine. Call: 603-938-2960

Need furniture stripped? Fast, reliable & reasonable service. Call Joe @ 603-863-6178

FOR SALE. Four studded snow tires 175/70R14 Wintermaster Plus tubeless steel belted radials driven only 10,000 miles. \$100. Call 938-2820.

FOR SALE. ~BRAND NEW~14 K Yellow Gold Marquise (.40ct) Diamond Engagement/Dinner Ring. Stone measures 7.5x3.45mm. Four side diamonds (.12ct tw) Very attractive/current appraisal from major retailer available. Asking \$500. Call 938-2064

To place a FREE classified ad of 40 words or less: please call Carey Rodd at 938-2692 or e-mail bradfordbridge@mcttelecom.com.

Children's Story Hour, Wednesdays at Brown Memorial Library, 10:30 am
Bradford Historical Society, Old Post Office, open most Saturdays from 1:30-3:00 pm or by appointment, call 938-5386

BRADFORD WEB SITE NOW HAS FREE COMMUNITY CLASSIFIEDS

Post Your Free Listings: Help Wanted, For Sale, Items Wanted, Tag Sales, Other. Classifieds will be listed for 1 month from date of receipt unless otherwise specified.

<http://www.bradfordnh.com>

Emergency Numbers
**EMERGENCY FIRE, POLICE &
RESCUE**
TELEPHONE 911
Police non-emergency number
938-2522

Transfer Station Hours

Wednesday, Saturday, & Sunday
10:00 am-5:00 pm

To list events for the
March Calendar, call Beth Rodd at
938-2692
or e-mail
bradfordbridge@mcttelecom.com
before February 20.

Due to printing deadlines, the
editors must receive display ads by
the 20th of the month.
Articles and notices received after
the 20th will be included only if
space allows.

Bradford Bridge March Deadlines

Display ads	February 20
Classified ads	February 23
Articles	February 20



PIZZA CHEF
LUNCH SPECIALS ~ SUBS ~ PASTA ~ SALADS
ITALIAN DINNERS ~ CALZONES

"Delicious Pizza"

• Many New Items • Ice Cream • Beer & Wines

Lunch & Dinner
Open 7 Days 10 to 9

DINE IN OR CALL AHEAD
FOR TAKE OUT SERVICE

938-2600

Bradford Pizza Chef at the corner of Rte. 103 & Main ~ Bradford, NH