

# THE BRADFORD BRIDGE

COMMUNITY NEWS BY NEIGHBORS FOR NEIGHBORS

Volume 14, Number 2; Issue 152

February 2004

## Kerry Wins NH Primary

Senator John Kerry won the NH Presidential Primary. But the District 34 towns of Bradford, Warner, and Sutton showed their independence by voting Gov. Howard Dean ahead. Senator John Kerry led in Henniker, Hopkinton, Newbury, and Webster.

	Clark	Dean	Edwards	Kerry	Kucinich	Leiberman
Bradford	56	124	44	106	18	21
Henniker	189	360	114	387	35	69
Hopkinton	174	484	149	569	26	113
Newbury	51	138	47	154	5	34
Sutton	50	154	54	150	6	45
Warner	77	268	54	230	12	40
Webster	46	83	56	130	7	44



Clockwise from upper left: Newbury; Bradford Poll volunteers; Sutton; Bradford



photos by Beth Rodd

## Bradford Seeks Police Chief

The Board of Selectmen announce the position of Chief of Police in Bradford is vacant. The Selectmen have established arrangements with area law enforcement agencies to insure the citizens are protected until a new chief can be recruited.

According to an article in the January 27 issue of the *InterTown Record*, a meeting of the Bradford Selectmen January 23 brought the town head-to-head with Police Chief James Kirby over a reported 911 call received by New London Dispatch in the early morning hours of Nov. 19.

Calls to the attorneys representing the town and Chief Kirby seeking further information were not returned.

The *InterTown Record* article explains that in public session at the Friday meeting, the incident was discussed in detail, but no decision was reached at the public session regarding Chief Kirby's employment. When asked for comment, both the Selectmen's Office representative, Cheryl Behr, and the patrolman on duty, Douglas Trotter, would only comment that the position is vacant.

## Special Elections Tuesday, March 2

Special elections for State Representative from Merrimack County District 34, representing the towns of Bradford, Henniker, Hopkinton, Newbury, Sutton, Warner, and Webster, will be held on March 2, 2004.

The following won the Special Election Primary and are candidates vying for the open seat: Beth Rodd, (D), Bradford, and Peter Russell (R), Hopkinton.

The results of the District 34 Primary Election, held on January 27, are as follows:

Candidate	Votes
Beth Rodd (D)	3,456
Peter Russell (R)	600
Jim Powell (R)	563
Fred Creed (R)	168
Timothy Troncone (R)	41

"[The political mind] is a strange mixture of vanity and timidity, of obsequious attitude at one time and a delusion of grandeur at another time. The political mind is the product of men in public life who have been twice spoiled. They have been spoiled with praise and they have been spoiled with abuse."  
Calvin Coolidge (1872-1933)

### Inside

The Workshop	2
Bradford Rescue Squad	3
Soo Nipi Audubon	4
Senior Council	4
Rural Heritage	5
Letters	6
Real Estate Hints	8
Middle School Bond Q&A	9
Community Center Calendar	10
Then...	11
Obituaries	11
Bradford Fish & Game Club	12
First Baptist Church News	12
Library Lantern	13
Area Events	14
Outside	15
Town Calendar	16
Classifieds	16

## THE BRADFORD BRIDGE



P.O. Box 463

Bradford, NH 03221

Telephone: 603-938-2692

FAX: 603-938-2995

bradfordbridge@mcttelecom.com

### VOLUNTEER STAFF:

Bev Leo and Beth Rodd, Co-editors  
Meg Fearnley, Assistant Editor  
Carol Troy, Ad Manager  
Jarna Perkins, Business Manager  
Carey Rodd, Classified Ad Manager  
Diane Planchet, Proofreader  
Vern & Marion Hall, Subscriptions  
John & Elinor Robie, Distribution  
Gene Schmidt, Distribution

### Subscription Information

For those wishing to receive the Bradford Bridge by mail, the annual subscription price is \$12 to cover the cost of mailing. To subscribe, please send a check to the address above.

### Advertising

The Bradford Bridge is a free community newspaper supported by advertisers. To place an ad, call Carol Troy at 938-6186 or send a FAX to 938-2995. Ad deadline is the 20th of the month.

### Submissions

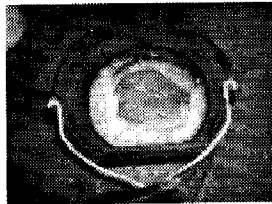
The Bradford Bridge is written by neighbors, for neighbors. Anyone is welcome to submit articles and/or photographs of interest to the community. The Bridge reserves the right to edit submissions for length or content. Send articles or letters to Beth Rodd/Bev Leo at the address, FAX number, or e-mail address above by the 20th of the month.

## HOW COLD WAS IT?

On the morning of January 25, 2004, our thermometer showed -10°F. How cold is that? It is 42° below freezing. It is 88.6° below body heat. It is 202° below the boiling point. But it is still 450° above Absolute Zero! And it is not the coldest we've had this winter. We've seen it reach -15°. At ten below, the water in the horse buckets freezes solid, bowing out the bottom of the bucket. We have to bring the buckets indoors by the woodstove to thaw them out.



The bottom is pushed out by the ice



Solid ice--buckets of fresh water are carried out to the horses four times a day!

Photos and text Beverly Leo

## Bradford Country Squares

The Bradford Country Squares will host a "Sweetheart Swing" Mainstream/Plus afternoon square dance from 2:00-5:00 pm on Sunday, February 22. Please note the new day and time. Jerry Maurice will call and Bernie Porter will cue. Admission is \$5 per person and includes refreshments. For further information, you may call Arlo and Norma Burns at 927-4454. Spectators are free and always made welcome.

—Arlo & Norma Burns

## Thank You, Jarna!

The Bradford Area Community Center Governance Board would like to express its appreciation of our director Jarna Perkins. She has brought a new dimension of humor, efficiency, welcome, and cheer to the center. The Governance Board is delighted to have Jarna as director of the Community Center. It is especially appropriate since Jarna has lived all her life here in Bradford and is descended from a long line of Bradford residents. She is invested in the success of our operation and spends extra hours when needed to keep the center functioning. Jarna, we, as a board, want to tell you that we appreciate you and hope that your enthusiasm continues in the future. The BACC is there for all residents in Bradford and surrounding communities. Come visit us and inquire about our many offerings for all ages from pre-school to seniors.

—BACC Governance Board

## The Workshop

Dean Bensley, Chairman of the KRS Board; and Beth Rodd, candidate for State Representative, to speak on February 12

Dean Bensley, Chairman of the Kearsarge Regional School Board, will be a guest speaker at the Workshop Meeting on Thursday, February 12, at 12:30. Bensley will discuss what's involved with the potential high school expansion and the new middle school: why they're needed, what they'll cost, and problems we'll encounter if we delay the process.

Also joining us is Beth Rodd, Democratic candidate for the place left vacant in the House of Representatives when J. Colcord left to fill Bernie LaMache's spot as a County Commissioner. She will describe the position and answer questions. The public is invited to attend this meeting to be held at the Friendship House in South Newbury on Thursday, February 12th at 12:30. Take this opportunity to meet the candidate for a seat in the New Hampshire House of Representatives and learn more about the schools. Residents of Bradford, Sutton and Newbury will be voting on both items at Town Meeting in March.

For more information call Dolores Hansen at 938-5586.

Dolores Hansen



WWW.IAMNOW.NET  
107 E. Main St.  
Bradford, NH  
603-938-2127

Internet - Pure and Simple!

### Internet Access

Toll free 56K dial up from Bradford, Henniker, Hillsboro, Newport, Sunapee, Sutton, Warner, and Washington

### Web Hosting & Design

DSL (Bradford 938 only) Faster than dial up!

Refer a Friend - Get \$20.00

## Bradford Rescue Squad Profile—Sue Sneck

What is rewarding about the squad?" Sue Sneck repeated back to me, as she sat reviewing her experiences with Bradford Rescue. "We do something that is immediate; that potentially can save a life in some cases." Sue is the daughter of a retired Fire Chief and feels she comes by a desire to help and be involved in her community naturally.

In her early forties, Sue, who is married with a 5-year-old son, several pets, including a horse, and a busy multi-faceted career, still finds time to commit to the one call-night a week and one weekend every fifth week as a Bradford Rescue Volunteer. Her background in teaching psychology and as a Mental Health and Addictions Counselor in a private school lend well to the helping others enthusiasm that is much needed to be a squad member.

Sue, a cancer survivor, brings a tremendous amount of energy and inspiration to the Squad. She has been a squad member now for almost three years, advancing her training to the intermediate level. Being at this skill level affords Sue more options of patient care including the starting of IVs and additional patient assessment skills. Regardless of the nature of the call, Sue explains, "when a person dials 911, the situation is an emergency to them." The squad responds to a gamut of emergencies from minor accidents to various body maladies, to a heart attack in progress. Each may rate differently in their severity, some life-threatening, but all are equally an emergency to the caller.

"The part of EMS that is difficult," Sue went on to say, "is the strength of having a local volunteer squad. We are neighbors helping other neighbors through a time of crisis. In one instance, a Rescue Volunteer offered to stay at the scene to prepare scrambled eggs and tea, to help calm a person who was just through a traumatic experience."

Sue encourages anyone who has thoughts of joining the squad to follow through on that urge because something is drawing them to it. The Rescue Squad is always interested in speaking to folks who want to become involved. We need people from all walks of life to volunteer because each of us has our own unique abilities and experiences which could benefit the squad's operations. For various reasons, the squad will be losing three EMS members in the upcoming months. Frankly, this will leave us short even as we bring new folks onto the squad. If you have been thinking about a way to become involved in the town and give so much to those in need, please call.

"I was absolutely the least likely person in my family to ever get involved with a rescue squad," one person commented to me. She said this after having volunteered for eighteen years on the ambulance and becoming Captain of the Squad. If you would like to speak to someone regarding Bradford's Rescue Squad, call Jim Powell at 938-2228.

—Stephen Manley, Lieutenant

District 34 Special Election for State Representative Tuesday, March 2  
Bradford Town Meeting Tuesday, March 9

We're NOT just another convenience store...  
WE ARE A TRAVELER'S COMPANION:

WE ARE NOW SERVING INDIAN FOOD  
LUNCH & DINNER TO GO EVERY DAY EXCEPT MONDAY



Happy Valentine's Day!

Cobble Pond Farms

Groceries • ATM • Beer & Wine • Lottery • Gifts  
Sodas • Snacks • Sandwiches • Auto Supplies  
Newspapers & Magazines • Toys • Gas, Diesel &  
Propane • Video & DVD rental

OPEN SEVEN DAYS! 6:00am–10:00pm

938-2662  
Rte. 103, Bradford



SPECIAL ELECTION DISTRICT 34  
Tuesday, March 2nd



Beth Rodd

for State Representative

Former two-term Legislator with experience working for the people and small businesses of District 34: Bradford, Henniker, Hopkinton, Newbury, Sutton, Warner, Webster.

Rec'd Agent: Corey Rodd, Bradford, NH

927-4973

Route 114  
North Sutton

**ALL & AWL REPAIR**

Small Engine Sales & Service  
Tractors • Harness & Tack Repair  
Art, Kirk, Lynne & Kris Chadwick  
Hours: Mon-Fri 7:30–5:00, Sat til 1:00

SUTTON \$55,000



Nice building lot in convenient location--stream abuts one corner. Potential house site & some clearing done. Snowmobile trails on site or can be posted. Access to highways, New London, schools. Septic plans & soil information available.

We have many more land, residential and commercial properties...stop in for more details!

Ann C. Hallahan, Managing Broker

**COUNTRY  
HOUSES**

Real Estate  
1 Center Road PO Box 525  
Bradford, NH 03221  
938-2020

www.CountryHousesRE.com

**CHAOS DESIGN**

\* Graphic Design  
\* Web Design  
\* Computer Tutoring  
bleo@iannow.net  
938-2996



New London  
526-6951

**Fresh Meats  
&  
Produce  
Fresh Fish  
Fresh Deli Items**

**DODGE'S  
GENERAL STORE**

Featuring  
Boar's Head



Premium Delicatessen Products  
Beer • Wine • Full Dairy Case  
Breads & Groceries  
Medicines • Health & Beauty Aids  
Newspapers  
Housewares • Hardware,  
Toys • Gifts • Hallmark Cards

**Full Service  
SODA FOUNTAIN**  
Ice Cream, Sundaes,  
Banana splits, Shakes,  
Frappes, Floats, Sodas



**NOW OPEN WEEKDAYS  
6 am - 9 pm  
Saturday & Sunday 8am-9pm  
102 E. Main Street, Bradford  
938-2258**

**Soo-Nipi Audubon Chapter**

**B**en Steele, who teaches a course in Bird Ecology at Colby Sawyer College, will present a slide program for the Soo-Nipi Audubon Chapter entitled "Decisions Faced by Common Eiders: Birding Stress and Brood Coalition in Finland," on Friday, February 13, 7:30 pm at St. Andrews Episcopal Church on Gould Road in New London. This program is open to the public and refreshments will be served. For more information contact Fred Sladen at 526-4321.

Peter Newbern will lead the annual Soo-Nipi Audubon field trip to Cape Ann, Gloucester-Rockport Massachusetts on Saturday, February 14 to look for over-wintering water and shore birds. Participants should meet at Warner Park and Ride, exit 9, I-89, at 8:00 am. Bring lunch, beverage, and binoculars. Scope is optional. Inclement weather automatically cancels the trip. For details call Peter Newbern at 763-4308.

—Phyllis H. Curtiss

**Celebrating the Small Farm**

**N**ortheast Organic Farming Association-NH's 2<sup>nd</sup> Annual Winter Conference will be held on Saturday, March 6 at Rundlett Middle School, 144 South Street in Concord. An educational experience for all farmers, gardeners, and consumers, this conference, entitled "Celebrating the Small Farm: The Bedrock of Healthy Communities", will feature more than two dozen workshops. Some of the workshop topics include: Season Extension/Hoop House Growing; Controlling Insects & Weeds Organically; Joan's Famous Composting Worms; Community Supported Agriculture; Dowsing for Abundance and Joy in Your Organic Garden; Your Food Shall Be Your Medicine and Your Medicine Shall Be Your Food; Small, Diverse, Four Season Farmsteading for a Healthy Living; Getting Your Town to Ban GMOs; Whole Farm Return on Investments; Home Brewed Beer; and Raising Livestock Organically. Full details and price options will be available soon! Check our website [www.nofanh.org](http://www.nofanh.org) or e-mail us at [nofanh@innevi.com](mailto:nofanh@innevi.com).

Karen Booker

**Senior Council Plans Programs For 2004**

**T**he second Saturday of each month, members of the Bradford Area Community Center's Senior Council gather for recreation, informative speakers, delicious refreshments, and entertainment.

On February 14 from 1:00-3:00 pm Pot Luck Luncheon, business meeting, and Valentine games are on the agenda. Any and all seniors from the area are welcome. Membership is simple: just attend and express your interest. There are no annual dues. Those present just add something to the basket being passed.

Among the suggested activities for this year are "Car Pool" travel to "Mystery Restaurants;" a Community Service Project; a visit from our founder, Lynn Smith, now of Concord, to review the group's history, purpose, and goals. Other speakers are presently being recruited. Our January meeting was fascinating as Bev Leo described verbally and visually her long stay as a Peace Corps Teacher in the vastly different culture of Nepal.

For information please call 938-5387 or 938-5352.

**THE LITTLE STORE THAT HAS IT ALL! OPEN 7 DAYS  
Mon-Fri 5:30-am-8:00pm, Sat 6:00am-8:00pm, Sun 6:00am-7:00pm**

**BOWIE'S MARKET LLC**

**126 East Main Street, Bradford, NH  
938-5533 Fax 938-2609**

**DON'T FORGET YOUR SWEETHEART!**

We have:

- ♥ Valentine's Cards & Kid's Valentines
- ♥ Mixed Bouquets, Carnations, & Roses
- ♥ Valentine's Cookies & Candy

**Come in and check out our flyers for weekly specials!**

**Credit & Debit Cards WIC Food Stamps Accepted**



## Exciting Land Protection Opportunity

The newly-incorporated Rural Heritage Connection and the Bradford Conservation Commission have been involved in increasingly intense negotiations to arrange protection of the entirety of the rare Atlantic White Cedar swamp in the southwest corner of town. The cedar swamp and adjoining quaking bog have long been on State and regional lists of important plant communities. Atlantic Cedar has become sparse in its former range on the coast and it occurs in only a handful of locations inland, Bradford being one.

The conservation-minded owners of this 72-acre parcel have lowered the selling price for this effort and have agreed to wait until March to provide time to raise the needed funds. All sources of funding are being researched, though grant processes require more time than is available. Potential for a land swap for cash exists and virtually all of the conservation fund of the Conservation Commission will be called upon. As a last resort, a warrant article may be proposed for an amount to match the conservation fund's \$30,000. It is expected that this article will be withdrawn entirely or reduced at the Town meeting as the results of the fundraising effort are totaled. Approximately \$70,000 will be needed. The exact transaction costs are not known at the time of this writing. Some services will be donated and a survey may not be required. The intention would be for the Town of Bradford to hold the title with a conservation easement in place.

The Rural Heritage Connection was created around the realization that the identity of a community is formed in part:

- by its history, and what remains of its representation in the current landscape in architecture, rural views, and granite artifacts,

- by its unique habitats and the presence of viable wildlife populations and plant communities,

- and by the continued availability of clean water and open space that caused many of us to choose this place as our home.

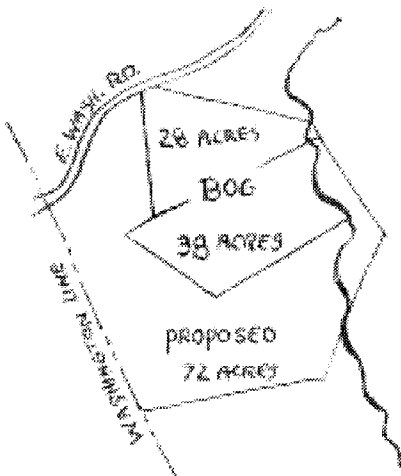
Education will be a primary focus for the RHC. There are potential tax advantages for owners interested in preserving lands of importance by several methods. Various grant programs are tailored to specific qualities as well. And, of course, there are community tax advantages as well.

Within the past year, more than 100 new house lots have been approved or proposed. Even a rudimentary grasp of mathematics indicates that the tax income from these predominantly minimum acreage lots will not approach the costs in services for the increase in population. Schools, police, rescue, and transfer station are some of the main expenses. The majority of these lots are in four new subdivisions on new inroads. This should not be the fate of the Bradford Bog.

Retaining the best of our remaining land in undeveloped open space—by protecting favorite views and recreation lands, the best water resources and wildlife habitats, and the stories contained in the old buildings—serves the dual purpose of preservation of the rural atmosphere and moderation of property taxes.

Growth has accelerated in surrounding towns, it will continue here as well. Fundraising for the preservation of properties of significance, including the project in front of us, will be ongoing. Any donations large or small to this effort will be accepted at the following address: Rural Heritage Connection of Bradford, PO Box 296, Bradford, NH 03221. For more information contact Miranda Levin at [inthering@conknet.com](mailto:inthering@conknet.com).

Ann Eldridge



## Bradford Board of Selectmen

Bruce Edwards, Chairman

Peter Fenton

Dave Pickman

Cheryl Behr, Administrative Assistant

### Office Hours:

Monday–Thursday, 8:00am–noon,

1:00–5:00pm

Friday, 8:00–noon

Telephone: 603-938-5900 • Meetings  
1st & 3rd Tuesdays, 5:00pm

938-2315

60,000 BOOKS

### Books by the Lake

Buying & Selling

Quality Used Books in Most Fields

Route 114 at Lake Massasecum

Thurs–Mon 10:00–5:30



## McPuter

Mike Pugliese—Owner/Technician

Located in the R.L. Dodge Building

102 E. Main St., Bradford, NH

[mpugliese@conknet.com](mailto:mpugliese@conknet.com)

(603) 938-2701

Guaranteed Computer Sales & Service  
Repairs & Upgrades Our Specialty!

## Thistle and Shamrock Inn



### & Restaurant

11 West Main Street, Bradford, NH  
03221

Bed and Breakfast Accommodations

Casual Gourmet Dining

5:30 to 9:00 pm

Special  
Valentine's Day  
Dinner for Two

reservations  
a must

938-5553

(Closed Mondays and Tuesdays)

## Hugo's Electric, Inc.

Licensed & Insured

RESIDENTIAL • COMMERCIAL

938-5573

3191 State Rte 114, Bradford

## Custom Designed Jewelry

*Spirit of New England*

Jim Papuga—Goldsmith



Ring in yellow or white gold with 1 carat white sapphire. Many other gemstone options available.

*Member of the League of NH Craftsmen*  
By Appointment Only • 938-2901



Mi Casa Es Su Casa

Live-in owners welcome residents to make a home in their home. Pets, too.

Foxchase, Assisted Living  
Route 114, P.O. Box 620  
South Sutton, NH 03273  
(603) 938-5111

## Country Spirit

RESTAURANT & TAVERN

*"In the only Henniker on earth"*

Jct. Routes 202, 9 & 114.  
Henniker, NH 03242

428-7007

WINTER HOURS  
CLOSED TUESDAYS

Sun & Mon, Wed & Thurs  
11am-9pm

Friday & Saturday 11am-10pm



# LETTERS

To the editor:

At our March Town meeting there will appear on the Town warrant a petition in support of the establishment of a US Department of Peace. On April 8, 2003 House Bill 1673 was presented to the US House of Representatives in Washington DC which proposed the formation of a Cabinet level Department of Peace.

As we have said to many, this concept is not about any particular candidate who is running for President, either as a hopeful or as an incumbent. This is about establishing, at the national level, an option for people to consider when needing to respond to situations that can lead to hostilities, be they within our homes, our schools, in our workplace, or between nations. We cannot begin to change our behavior if we do not know ways to do so. This bill is about creating a choice. And if given a choice, we might be able to consider options other than violence to resolve our differences.

This bill not only has the support of its sponsor but also an additional 49 representatives from the House who signed on as co-sponsors.

The Department will be staffed by an Undersecretary, appointed by the President by and with the advice and consent of the Senate as stated in our US constitution relative to these kinds of appointments.

In addition, there shall be assistant Secretaries likewise appointed by the President by and with the advice and consent of the Senate, with responsibilities for the following:

- Peace Education and Training,
- Domestic Peace Activities,
- International Peace Activities,
- Technology for Peace,
- Arms Control and Disarmament,
- Peaceful Coexistence and Nonviolent Conflict Resolution, and
- Human and Economic Rights.

The cost of this Department as stated in the legislation would be an "amount equal to at least 2 percent of the total amount appropriated for that fiscal year for the Department of Defense."

The citizens of Bradford, by passing this petition, would be respectfully instructing our elected representatives, Congressmen Bass and Bradley, and Senators Gregg and Sununu to actively work to have HB 1673 come out of all committees as "Ought to Pass" and once on the full floor of the House and after crossing over to the Senate, work in support of and vote in favor of its final passage.

The passage of this petition will further instruct our elected representatives, speaking on our behalf, to elicit the support of the President of the United States in the creation of this Department of Peace as presented in HB 1673.

To read the text of the bill you can go online to: [www.thomas.loc.gov](http://www.thomas.loc.gov) and enter HB 1673 in the search box. Once there, click on the "Printer Friendly Display" box in the upper right corner. It is 13 pages long (if you decide to print it) and is very readable.

We hope that in March when we stand to speak on this item, the people of Bradford will vote to support this effort.

For further information you may contact: Sue McKeivitt and Tom Wilkins at 938-2401 email: [mcwil@iamnow.net](mailto:mcwil@iamnow.net).

*Sue McKeivitt and Tom Wilkins*

To the editor:

I was in excruciating pain on one of the coldest nights in January and had to call the Bradford Rescue Squad. One policeman, three EMTs, and a driver appeared to transport me from house to Concord Hospital. I just want to thank these people publicly for taking such good care of me. They took time away from their families to help me and it

Carpet ♦ Vinyl ♦ Ceramic Tile ♦ Hardwood ♦ Area Rugs

NEW LONDON ♦ FLOORCRAFT

and Creative Kitchens

Carl & Gail Olson  
Route 11, Wilmot

526-2600  
800-870-4646

**Letters**, Continued

did not cost me anything. I do not know the policeman's name nor the EMT with him who was from Sutton who did not go to the hospital, so please forgive me. Sue Sneck and Chuck Johnsen were the EMTs and Dave Bowie was the driver. A few days ago I learned that three EMTs will be leaving the Squad and we are in danger of losing this valuable service. If we do not get replacements we will have to depend on New London for assistance and of course will have to pay for the ambulance. Please contact the Bradford Rescue Squad if you can qualify.

*Sincerely, Jane Johnsen*

To the editor:

What have Americans learned about George W. Bush in three years? Certainly not power to the people. Since day one in office Bush has lied, misled and deceived a sleepy nation. George W. has exploited the system, the 9/11 tragedy, and corporate greed.

Wesley Clark, Howard Dean, John Edwards or John Kerry can, any one of them, beat Bush in '04 if Democrats, liberals, progressives, and the environmentally concerned get off their butts and vote their conscience and conviction. You're living on Planet X if you think things will be better after another four years of George W. Bush.

*Ron Lowe, Nevada City, CA*

To the Editor:

Mark your calendars for the Special Election on Tuesday, March 2 when a state representative will be elected to replace Rep. J.D. Colcord of Warner. Mr. Colcord, in turn, will fill the County Commissioner's seat vacated by Commissioner Bernie Lemach who relocated to Florida.

This is a particularly important election because issues that directly affect constituents in District 34 (Bradford, Henniker, Warner, Sutton, Newbury, Webster, and

Hopkinton) are often decided by one or two votes. Since redistricting realigned our representatives' districts, smaller towns with lower populations lost a voice in Concord and we deserve to have our interests and needs heard. I am not alone when I offer my choice for the State House as former two term State Representative Beth Rodd.

Beth was a valued member of the Criminal Justice and Public Safety Committee where she served from 1998-2000. She is a thoughtful, progressive, experienced legislator, highly regarded by her House colleagues of all political persuasions, who is pro-family, pro-children, and pro-choice. She has consistently voted to protect the interests of small towns, the environment, better educational opportunities for our children, and has rejected the notion that the state has no responsibility for supporting our schools and the needs of our communities. She understands that when the state short funds our communities by reducing aid to our nursing homes and county jails, the cost merely shifts to local property taxes and results in decreased essential services and unaffordable, skyrocketing property taxes for all of us. Underfunding education results in disparate quality of education from town to town. We deserve, our children deserve, better.

Beth has worked hard to legislate thoughtful, fair, and balanced approaches to issues relating to domestic violence, milfoil eradication, preservation of our natural resources, health care coverage, and many other issues that speak to the quality of our lives. We need representation in Concord. Beth has experience, keeps us informed, and will continue to work to represent the "little guys" who are often overlooked. Please join me on Tuesday, March 2 in reinstating Beth Rodd as our hometown representative in Concord.

*Mary Keegan-Dayton, Bradford*

THANK YOU! THANK YOU!

I would like to take a moment to thank all the residents of Bradford who worked the Presidential Primary. You did a great job! It was a great turnout: we had 510 ballots cast and 46 NEW VOTERS REGISTER at the polls. I would like to congratulate the first-time voters of Bradford; we are very proud of you and glad to see you get involved.

Many thanks go out to Ed Knight, owner of the Bradford Junction, for the great lunches and for the cookies you donated. Chris and Bruce Bowie of Bowie's Market for the delicious soup and the sinful chocolate cake. (We counted only votes on Tuesday, not calories!)

I also want to say Thank You to Judy Marshall, Maureen Papuga, and Jarna Perkins. Thank you for your dedication and hard work leading up to and during the Primary. These women worked very hard preparing for the election and registering the new voters and party changes. GREAT JOB!!!

I must say that I am proud to be a resident of Bradford and proud of all the people involved in this wonderful Town!

**Don't Forget to Vote March 2, Special Election, and March 9, 2004 for the Town Election.**

Many Thanks to all.

*Ann Lucier*

*Chairman, Supervisor Of the Checklist*

Dear BBA Members:

Your decision for your annual fund raiser proceeds to benefit the scholarship given annually to a deserving local student was sincerely appreciated by all. Your financial support over the years has always been there for all community activities in our town.

On behalf of the past and future Bradford students and the scholarship committee, thank you for always supporting our youth in their quest for higher education.

*DawnRich*

## Bradford Excavating, Inc.

Bradford, New Hampshire

Complete Site Work:

Rock & Stump, Foundation, Septic,

Road Construction, Fill, Stone Retaining Walls

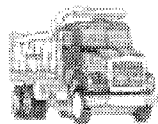
Servicing Bradford, Warner, Sutton, Newbury, Henniker and surrounding towns.

Offering:

Professional Service, up to date Equipment with Experienced Operators

Certificate of Insurance (upon request)

938-5664



**STEWART**  
**AGENCY**  
Main Street, Bradford  
938-2255 or 938-2256 

**STATEWIDE FIRE EXTINGUISHER**

**Residential and Commercial  
Fire Extinguisher Sales & Service  
Inspection of Kitchen Suppres-  
sion Systems**



R. James Allen  
P.O. Box 313  
Bradford, NH 03221  
phone 603-938-5245  
cell 603-496-6525



**Merrimack Farm  
& Country Store**  
PO Box 354/Main Street  
Bradford, NH  
(603) 938-2211



**It's time for the Carhartt  
Pant Contest!**

Bring in your old, worn,  
most loved Carhartt  
pants. The "worst" pair  
wins a new pair!

Good through Feb.29 2004

[www.merrimackfarm.com](http://www.merrimackfarm.com)



YOUR FRIENDLY  
PHARMACY  
428-3550

**WALCO  
MECHANICAL CO.**

REFRIGERATION, HEATING,  
AIR CONDITIONING,  
ELECTRICAL CONTRACTORS

COMMERCIAL • INDUSTRIAL • RESIDENTIAL

SERVICE • SALES • INSTALLATION

MAINTENANCE PROGRAMS

SYSTEM EVALUATIONS

**938-2926**

BRADFORD, NEW HAMPSHIRE



**Real Estate Hints:**

**Real Estate and Politics**

*by Laura Hallaban*

When you live in New Hampshire, you come to understand that politics play a big role in our everyday lives, especially around Primary Day. We are fortunate to have the opportunity to meet a wide field of politicians and hear about all the key issues so early in the entire process. While most discussions and debates do not hit on the subject of real estate and home ownership, this year there was news to report.

First, the American Dream Downpayment Act made its way to President Bush in mid-December for his signature. This legislation, backed by the National Association of Realtors, will provide approximately 80,000 low-income families with millions in grants over the next two years to help them pay downpayment and closing costs on their first home. The legislation will provide an average of \$5,000 in downpayment and closing cost assistance to help first-time homebuyers with annual incomes that do not exceed 80 percent of the area median income. Grants will be made to state and local governments through the U.S. Housing and Urban Development's (HUD) HOME Investment Partnership Program.

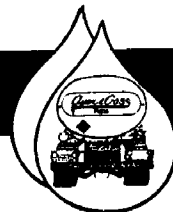
The American Dream Downpayment Act also includes two other important provisions. First, it will increase Federal Housing Administration (FHA) loan limits for the construction of multifamily housing in high-cost areas and second, it will provide a technical correction to the FHA's Adjustable Rate Mortgage program that will make the product more available to consumers. Families interested in applying for grants should contact their state or local housing agency.

On the subject of President Bush, his campaign issues also include affordable housing, tax credits, and a simplified mortgage process.

Regarding affordable housing, several candidates on the Democratic side also have campaign goals, according to the National Low-Income Housing Coalition. Sen. John Kerry hopes to boost minority homeownership rates through the National Housing Trust Fund Act and to utilize tax credits. Sen. John Edwards wants to fund brownfields redevelopment initiatives and use Community Development Block Grants and other partnership programs to lure low-cost housing and businesses to underserved districts. Gov. Howard Dean would increase Community Development Block Grants funding and eliminate predatory lenders, while Rep. Dennis Kucinich supports the construction of affordable rentals in rural locales. Ret. General Wesley Clark would bring public transit to low-income neighborhoods to curb sprawl and devote money to brownfields cleanup.

Now that voting day has come and gone and we are on our way to nominating a candidate to take on the current President, keep an eye on these issues and see where each stands as you consider all the issues for next November.

**District 34 Special Election for State Representative Tuesday, March 2  
Bradford Town Meeting Tuesday, March 9**



**24 HOUR SELF SERVICE  
GASOLINE & DIESEL PUMPS**

*Serving the area's heating needs for more than 60 years*  
FUEL OILS & LPGAS / COMPLETE HEATING SERVICE

**938-5335**

Route 114, Bradford • Hall Ave., Henniker . . . 428-3333



## Questions and Answers on the Middle School Bond

### Why should we build a new Middle School now?

The current Middle School is badly overcrowded, does not meet State standards, has many serious safety and code problems, and handicaps our educational program. We currently have about 550 students in a building that by State standards should hold 450. One need only look at the many new houses being built in the District to know that the situation is getting worse. Of the many citizens who have accepted the School Board's invitation to tour the building, virtually all have agreed that the need is critical.

Delaying action will cost more and penalize additional students. An additional year's inflation of building costs will cost approximately \$800,000 and a 1% rise in interest costs will cost the taxpayer about \$1,770,000 over the life of the bond. Moreover, there is a risk that the formula for State building aid will become less favorable.

### What is the cost of the project and the impact on our taxes?

The total amount of the appropriation is \$19,732,200 of which the State pays \$10,890,000. The project is to be financed with a 15-year bond. Next year the cost to taxpayers will be for interest only with the bond amortization starting in FY 2006.

The following is the cost allocation by Town:

Town	FY 2005	FY 2006
Bradford	25,491	91,333
Newbury	39,744	142,403
New London	72,544	259,922
Springfield	21,462	76,897
Sutton	27,032	96,854
Warner	38,636	138,432
Wilmot	20,345	72,896
<b>Total</b>	<b>\$247,259</b>	<b>\$880,743</b>

### Couldn't you build a new Middle School for less money?

The cost of the building itself is \$103 per square foot. This is approximately equal to the average cost of other middle schools built in New Hampshire. The construction management firm Eckman Construction, which has built many schools in New Hampshire and Vermont, prepared the very detailed estimate. After careful cost-benefit reviews the Building Committee made detailed decisions on items affecting energy efficiency, lighting, acoustics, and maintenance. Although some of these decisions increased the capital cost, they reduce future operating costs and provide a better environment for education. The number and size of classrooms was determined in accordance with State standards to support a student population of 700. The gym and the cafeteria were sized for a capacity of 900 to permit future expansion.

Although it would be possible to change these decisions to reduce the capital cost, the School Board believes that the Building Committee has made the correct tradeoffs and that such changes would increase long-term costs. As stated earlier, a delay of a year would cost approximately \$2.5 million in increased interest cost and inflation and would therefore offset potential capital savings.

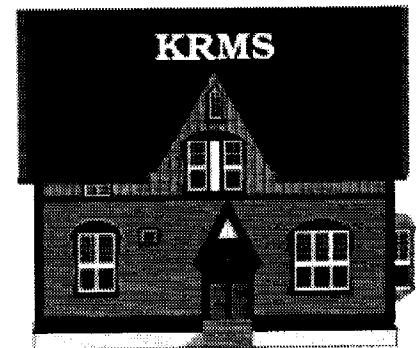
### Why don't you refurbish the New London school and build a smaller school closer to Warner?

The School Board did a careful comparative analysis of four alternative Middle School Plans, including this one, and presented its findings in a series of six public hearings in the Fall of 2001 and at last year's Annual Meeting. A comparison of the annual cost of operating two schools versus one is based on a detailed staffing plan. The annual operating cost of running two schools is in excess of \$1,000,000 more than for running one.

The capital cost of refurbishing the New London School and building a smaller school in the south has been estimated by two different architects both of whom concluded that the capital cost of refurbishing the New London School and building a second smaller school is substantially more than building a single new school. The reason for the relatively high cost of refurbishing New London is that the building would have to be gutted in order to renovate it to conform to State standards.

In addition to the cost problems of the refurbishment option, we have no practical plan to accommodate the students while the building is being refurbished. After hearing the costs and explanations, a straw vote of the attendees at the hearings was for a single school in every instance. Moreover, a survey of the students at the Middle School favored a single school. The voters confirmed these results in 2002 when they voted to fund the architect/engineering studies to build one centrally located middle school, and again in 2003 when they voted to buy the Sutton site.

*Mark Fairbank, Bradford School Board Representative*





## APPLESEED RESTAURANT

Don't forget Wednesday night pizza.

**VALENTINE'S DAY**  
Dinner-for-Two Specials  
Call for Details

We will be closed February 21 - March 1

Tuesday—Saturday 5:00—9:00pm, Sunday 9:00am—noon, 5:00—9:00pm  
Route 103, Bradford, NH \* Member, Bradford Business Association \* 938-2100

*Breezy Hill*  
**Self Storage**  
*Now Open!*  
**Call 938-5826**

# Bradford Area Community Center

## February 2004 Calendar

### MONDAY, FEBRUARY 2

Senior Center: Strong Living Exercises, 8:45 am  
Senior Center: "Book Babies" presentation by Liz Tardiff, 10:00 am

### TUESDAY, FEBRUARY 3

Fuel Assistance, 9:00 am-noon. (Call Laura Hall at 456-2207 for appointment).  
Senior Center: Bradford Quilting Bees, 10:00 am-noon

Senior center: Massage with Pamela Monaghan, 10:30 am-noon

Brownies, 3:00-4:30 pm

### THURSDAY, FEBRUARY 5

Senior Center: Marlene from Marlene's Flower's will teach us how to make a Valentine centerpiece to take home, 10:00 am. Price is \$6.00 per person. Call 938-2104 to reserve space.

### FRIDAY, FEBRUARY 6

Senior Center: Strong Living Exercises, 8:45 am

### MONDAY, FEBRUARY 9

Senior Center: Strong Living Exercises, 8:45 am

Senior Center: Craft Club, 10:00 am

Rainbow Girls, 5:00-6:30 pm

Junior Girl Scouts, 6:00-7:30 pm

### THURSDAY, FEBRUARY 12

Senior Center: Valentine's Luncheon. Bring a Valentine message or poem to share with everyone. 50/50 Raffle, door prizes, goodies galore! Come early for the festivities.

BACC Governance Board, 5:30-7:00 pm

### FRIDAY, FEBRUARY 13

Bradford Community Corporation, 7:00 am

Senior Center: Strong Living Exercises, 8:45 am

Senior Center: Mr. Fix It, 10:00 am-noon

### SATURDAY, FEBRUARY 14

Senior Council Pot Luck Lunch, 1:00-3:00 pm

### MONDAY, FEBRUARY 16

Presidents' Day Holiday. Senior Center is closed

### TUESDAY, FEBRUARY 17

Fuel Assistance, 9:00 am-noon. (Call Laura Hall at 456-2207 for appointment).

Senior Center: Bradford Quilting Bees, 10:00am-noon

Brownies, 3:00-4:30 pm

### THURSDAY, FEBRUARY 19

Blood Pressure & Foot Clinic, 11:00 am-12:30 pm

Senior Center: After lunch, Liz Tardiff from AmeriCorps/Vista will present the "NH Reads" program.

### FRIDAY, FEBRUARY 20

Senior Center: Strong Living Exercises, 8:45 am

### MONDAY, FEBRUARY 23

Senior Center: Strong Living Exercises, 8:45 am

Senior Center: Craft Club, 10:00 am

Rainbow Girls, 5:00-6:30 pm

### THURSDAY, FEBRUARY 26

Senior Center: Lifeline gives a presentation on emergency services, 12:30 pm

BACC Governance Board, 5:30-7:00 pm

### FRIDAY, FEBRUARY 27

Senior Center: Strong Living exercises, 8:45 am



## Program Information

For general information or to schedule an activity call Director Jarna Perkins at 938-6228. There is available time and space to accommodate all age groups, organizations, or activities at the BACC.

For details or questions regarding Meals on Wheels, CAP Transportation, or Senior Programs call Senior Center Program Director, Sandi Bandieri at 938-2104.

For Kearsarge Area Pre-School information, contact Heather Cooper at 938-2668.

## BACC Ongoing Activities

Senior Center Luncheon, Mondays, Tuesdays and Thursdays, noon

Bridge Group, Mondays, Community Room, 1:00-4:00 pm

Yoga Class, Tuesdays, Community Room, 6:00-7:15 pm

Yoga Class (Not Advanced), Community Room, Wednesdays, 9:30-11:00 am. Call Fran at 456-3099 to register.

Computer Tutoring, Fridays, 10:00 am. Beginners: first and third Fridays, intermediate: second and fourth Fridays. For information call Bev Leo at 938-2996.

## Senior Lunch Schedule

Lunch is served at 12 noon. Join us for a delicious meal and fellowship. You might be surprised who you'll meet!

**Mon., Feb. 2:** Baked Chicken, Cranberry Sauce, Stuffing, Whipped Potato, Spinach, and a Nutty Buddy Bar.

**Tues., Feb. 3:** Batter Dip Fish, Tartar Sauce, Scalloped Potatoes, Peas, Wheat Bread, Lemon Cake.

**Thurs., Feb. 5:** Chicken Chop Suey, Rice, Oriental Blend Vegetable, Pineapple, and Fortune Cookie.

**Mon., Feb. 9:** Stuffed Cabbage, Whipped Potatoes, Diced Carrots, Italian Bread, Crispy Bar.

**Tues., Feb., 10:** Sloppy Joes, Green and Wax Beans, Orange Juice, and Cookie.

**Thurs., Feb. 12:** Sliced Turkey w/Gravy, Cranberry Sauce, Sweet Potato, Winter Blend Veggies, Wheat Bread, Gingerbread Cake.

**Tues., Feb. 17:** Turkey, Broccoli & Cheese Casserole, Tomato Juice, Mixed Veggies, French Bread, and yogurt dessert.

**Thurs., Feb. 19:** Rigatoni Casserole, Italian Green Beans, French Bread, Birthday Cake with Ice Cream.

**Mon., Feb. 23:** Pub Burger Lunch with Mushroom Sauce, Hamburger Roll, Mashed Potato, Carrots, Jello.

**Tues., Feb. 24:** Chicken Drumstick, Gravy, Sweet Potato, Peas, Roll, Cookie.

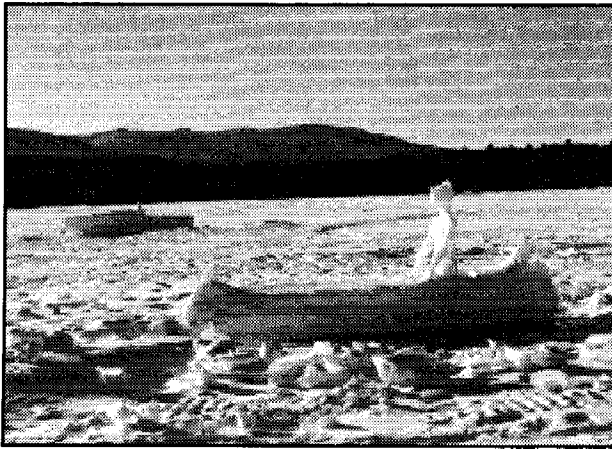
**Thurs., Feb. 26:** Italian Linguini with Meat Sauce, Parmesan Cheese, Italian Bread, Fruit Cup



# Then...

by Milly Kittredge

## Some Winter Wonders are Man-Made....



Bicentennial Celebration, 1987  
The Indian of Lake Todd  
And Others Are Not.



Route 114, 1992, photo by John Moore

## Master Plan Survey to arrive soon

The Town of Bradford is in the process of updating its Master Plan. This must be done every ten years to meet State requirements. Our last was completed in 1996 and it takes a long time to go from the survey to the final report. The Master Plan is intended to guide the development of a town. It is a reflection of our shared values and vision for the future of Bradford.

Please take the time to respond thoughtfully to the survey, which is our main source of information from town residents and landowners. Although the eight pages

may appear to be overwhelming, we have reduced the original set of questions considerably. Every answer is important and will serve to guide the modification of existing and creation of new policies and regulations. Every opinion matters--let us know yours. Surveys can be returned by mail, or filled out using the internet. Instructions will be provided in the package you receive. Thank you for responding.

*Bill Glennie, on behalf of the Bradford Master Plan Steering Committee*

## Obituary

CHARLES R. KANE

Charles R. Kane, 52, of West Road, died January 22 at home.

He was born in Brookline, Mass., the son of Marjorie (Bennett) Torredimare.

He lived in East Boston before moving to Weare and then to Bradford 15 years ago.

He was a lifelong carpenter.

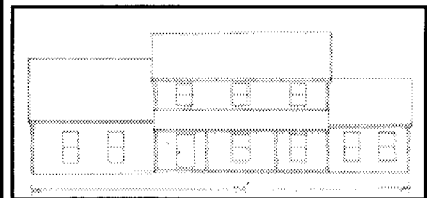
Survivors include his mother, of Concord; two daughters, Melissa and Renee Kane of East Boston, Mass.; a brother, Richard Kane of Weare; three sisters, Adelaide Camire of Bradford, Marjorie Dumas of Weare and Maria Buckman of Concord; and nieces, nephews, aunts, uncles, and cousins. His father, Anthony Torredimare, died previously.

A memorial service was held at the First Baptist Church of Bradford. The Rev. Lynne Hubley, pastor, officiated.

Burial will be held at a later date in Gethsemane Cemetery in West Roxbury, Mass.

In lieu of flowers, memorial contributions can be made to the Concord Area/Merrimack County SPCA, 130 Washington St., Penacook, 03303.

### SOUTH NEWBURY



Close to Lake Todd in a very convenient location, we have a new expanded colonial on 2.06 acres under construction. Well-known quality builder who has built almost thirty homes for our customers. Two-car attached garage, Oil/FHW heat, farmer's porch, colors are buyer's choice at this time. Call for more specifics and floor plans

**\$297,000**

**ELLIOT HANSEN ASSOCIATES**

◆ A REAL ESTATE COMPANY ◆

**603-763-9999**


## The Bradford Fish and Game Club 2004

We have had our first meeting of 2004 and are looking forward to a banner year. Our first event of the new year approaches rapidly. The Annual Ice Fishing Derby is being held on Sunday February 22, 2004 (rain date the following Sunday.) Registration and on ice action begins at 9:00 am with a closing time of 2:00 pm. Please remember to dress warmly and bring your enthusiasm and appetite. Note to club members: The President's Breakfast will begin about 7:00 am to 10:00 am.

We are proud to announce our public support of Senator Below's bill which would give the public boat access to Lake Sunapee at not only the Wild Goose Launch point (currently proposed by The State Department of Fish and Game) but also at the Sunapee State Park, which would be safer for all and easier for larger boats to launch from. Anyone seeking further information contact Lance Rickenburg, who is acting as our legislative representative, and Dickie Wright, current expert on the bill.

Our first meeting of the new year was productive and well attended. Topics covered were the upcoming Annual Buffet, our long suffering heating system, Dickie's report on Below's bill. Details for the Ice Fishing Derby were ironed out. A proposal to sponsor a coyote hunting contest was put forward and is being sponsored by Dickie Wright. Contact him for further information. Some maintenance issues were also tackled. Our next meeting will be on February 3, 2004 at 7:30 pm. Hope to see you there.

Mary Hodgman, Secretary



Septic System Designs  
Test Pits, Perc Tests  
Site Assessments  
Land Planning  
Permitting

**ROBERT C. STEWART, Jr.**  
938-2256 Main Street

Your Editors would like to invite comments and suggestions for making this truly a neighborhood newspaper.

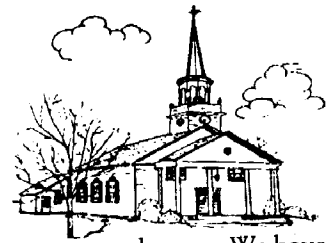
Would you like to see more minutes of meetings (we'll need stringers to cover the events), more pictures of events, more listings of area events?

What is important to you?

bradfordbridge@mctelecom.com  
938-2692

# First Baptist Church News

From Lynne E. Hubley



**Youth Group:** Youth who are in grades 5-8 are invited to come to youth group. We have two meetings in February. The first is on Wednesday, February 11, from 6:30-8:00 pm. This will be an evening of drama and comedy. We will be acting out two skits: "Long Time No See" and "The Job Applicant." Ice Cream Sundaes will be the snack.

On Sunday, February 29, we will meet at the church at 2:00 pm and travel to Fox Chase Assisted Living in Sutton and interview some of the residents. Our youth will be asking the residents what it was like for them to be a teen. We will be bringing some cookies to share with the residents and will return to the church around 4:00 pm.

**American Baptist Women's Ministries:** On Wednesday, February 11, ladies will meet in the church vestry at 2:00 pm for part two of a series of workshops on stress. The theme this month will be "releasing stress through massage therapy."

**Hunger Dinner:** Our Missions Committee will hold their annual Hunger Dinner on Sunday, February 15, immediately after church. The snow date will be Sunday, February 22. The dinner will consist of chicken noodle soup, vegetable soup, and corn chowder, rolls, and ice water. A free will offering will be taken. All proceeds will benefit Heifer Project International. The Mission Committee will choose the animals at their next meeting based on the offering taken.

**Food Pantry:** The February distribution date for the food pantry is Wednesday, February 18, from 6:00-7:00 pm. Food can also be picked up at other times by calling the church office at 938-5313.

**Men's Fellowship:** The men will have their fellowship meeting on Wednesday, February 18, at 7:30 pm at the home of Fred Hubley.

**Cruise Night:** Our church is hosting a "Mardi Gras Cruise Night" on Tuesday, February 24, at 7:00 pm. The evening will include a dessert buffet (pot luck), entertainment, exercises with a Richard Simmons look-a-like, bingo, and a whole lot more. We will have a captain, a doctor, and a cruise director on board to see that the evening goes smoothly. We hope to enjoy all the desserts that we might be giving up the next day on Ash Wednesday.

**Ash Wednesday Worship Service:** Our Ash Wednesday service will be Wednesday, February 25, at 7:00 pm. The service will include special music, a meditation entitled "A Fresh Start," youth participation, a Children's Story and a few testimonies about what people give up or do during Lent.

**American Baptist Men's Sunday:** The men in our church will conduct the entire worship service on Sunday, February 29. The theme will be "Sacrifice" because it is the first Sunday in Lent. The service begins at 10:00 am.

## PINK ELEPHANT BAZAAR

124 East Main Street, BRADFORD ~ Behind BOWIE'S, on the LEFT

Saturday 1:00 to 6:00

Other hours by chance or by appointment

Great Valentine Gift Items

Handcrafted FURNITURE, TOYS, GIFTS

New & Used COLLECTIBLES & RECYCLABLES

603-938-2764

STAIR PARTS/Furniture Repair/SEWING/Word Processing/DB Management/AVON





## Library Lantern by Meg Fearnley

A new art show sponsored by the Bradford Art Group is hanging at the library. Come in and see the collection of etchings by J. Ann Eldridge, they are exquisite.

Thanks to Carey Rodd, the library receives timely public health information bulletins. There is information ranging from well water safety to West Nile virus facts. Feel free to ask the librarians to point you to this great public health resource.

Our next book to movie discussion will be on *Double Indemnity* by James M. Cain. This 1944 film noir was directed by Billy Wilder, co-scripted by Raymond Chandler, and stars Fred MacMurray, Barbara Stanwyck, and Edward G. Robinson. The discussion/viewing date will be in March. Copies of the book will be available at the library soon. Ask at the circulation desk.

### BROWN MEMORIAL LIBRARY HOURS:

Monday, 10:00 am–8:00 pm  
 Wednesday, 10:00 am–7:00 pm  
 Saturday, 10:00 am–3:00 pm  
 StoryTime Wednesdays 10:30  
 Telephone: 938-5562  
 email: brownml@conknet.com

Also, kind people continue to donate great movies to the library. Check out the new *Geo Kids* videos for children produced by the National Geographic Society. Our special friend, Harry Gross, donated them to the library. Our collection is growing!

Here are some of the many new books at your library.

For adults:

*The Amateur Marriage* by Anne Tyler  
*The Hornet's Nest* by Jimmy Carter  
*The Kills* by Linda Fairstein  
*Trojan Odyssey* by Clive Cussler  
*Odd Thomas* by Dean Koontz  
*The Lady and the Unicorn* by Tracy Chevalier

And for children:

*Inkheart* by Cornelia Funke  
*Halibut Jackson* by David Lucas



### Kearsarge Writer's Group

Starting Monday, February 9, the Kearsarge Writer's Group will meet at the Brown Memorial Library at 3:00 pm. The frequency of meetings will depend on interest of attendees.

Graduates of Fran Lyons' *Journey With Me* workshops wishing to continue sharing and critiquing our writing are invited to gather on Mondays. Call Beverly Leo for information, 938-2996

## HENNIKER VETERINARY HOSPITAL

PROFESSIONAL ASSOCIATION  
 Small Animal & Equine Practice

Alyssa J. Brust D.V.M.  
 Robert A. Brust D.V.M.  
 Jill R. Patronagio D.V.M

24 Hour  
 Emergency Service  
 House Calls Available

Henniker,  
 New Hampshire

603-428-3441



From the "secret" recipe files of



Chef Jim Horigan  
 Thistle & Shamrock Inn

### "Chicken Spectacular"

This is a recipe I received from the Ladies at the First Baptist Church in Texas. It is one of those great "pot luck" items that you can put together and cook or freeze, uncooked, for emergencies. Make two and freeze one!

- 3 cups diced, cooked, chicken
- 1 pkg. Uncle Ben's white and wild rice, cooked
- 1 can cream of celery soup
- 1 med. jar of pimientos, diced
- 1 med. onion, diced
- 2 cans french style green beans, drained
- 1 cup mayonnaise
- 1 can sliced waterchestnuts
- salt and pepper

Combine in a 2 1/2 to 3 quart casserole  
 Bake at 350F for 25 - 30 minutes  
 OR freeze, UNcooked

Enjoy!

(If anyone has a question about, or problem with, any of my recipes, please feel free to call the Inn for assistance. JRH)

## PIZZA CHEF

LUNCH SPECIALS ~ SUBS ~ PASTA ~ SALADS  
 ITALIAN DINNERS ~ CALZONES

### "Delicious Pizza"

• Many New Items • Ice Cream • Beer & Wines

DINE IN OR CALL AHEAD  
 FOR TAKE OUT SERVICE

938-2600



Lunch & Dinner  
 Open 7 Days 10 to 9

Bradford Pizza Chef at the corner of Rte. 103 & Main ~ Bradford, NH

## DUMONT'S BARBER SHOP

Wednesdays 8:00-6:00

Main St. Denis Dumont, Owner

### the Rolling Pin

COFFEE LAT

For Crime Diddle Lovers Only!

L'Amour's Creme Brulee Set  
includes BONORA's red hot torch &  
Creme Brulee Cookbook plus 4 fluted  
heart-shaped porcelain ramekins.

We also carry bunars and new  
heart-shaped dishes in pink and red  
just in time for Valentine's Day!!!

WINTER HOURS

Open Tues-Fri 10-1, Sat 9-5, Sun 10-1

17 East Main Street • Warner, NH 03278

456-2590 • Fax: 456-2038

## Video Pursuit

Open 11 to 9 M-F

10-9 Sat/Sun

938-2111 • FAX 938-2453

DVD rentals \$3.00

All Old Movies only \$1.00!!!

Previously Viewed  
Movies For Sale \$10



"Escape from your world;  
watch a movie!"

## Area Events

**Main Street BookEnds of Warner, 16  
East Main Street, Warner:**

**Friday, February 6 7:00 pm** Richard King & Friends, Enjoy Folk Classics. Donations at Door.

**Sunday, February 8 1:30 pm** Shape Note Singing, Open to All.

**Friday, February 13 7:00 pm** Meet Author Cynthia Neale: *The Irish Dresser*, a young adult historical novel of the Potato Famine. Discussion & Concert w/ Irish fiddle, guitar, flute, low-whistle, & djembie.

**Monday, February 16 7:30 pm** Main Street Warner Theatre Project Presents *Conversation With the Playwright*. Join us for coffee, cookies, and discussion with Leah Burdick, playwright, about research and

writing of the play about Mme. Caroline Gardner Bartlett: Warner resident, European singing career, joined WWI war effort to establish hospital in France, smuggled supplies, and was an accused spy. Come join script advisor Kevin Gardner and project producer George Packard to learn more, offer your ideas, & find an opportunity to volunteer with the project.

**Friday, February 20 7:00 pm** Vocalist Pat Trader singing Gershwin Tunes; \$5 Suggested Donation.

**Monday, February 23 7:00 pm** Special Meeting with Superintendent Tom Brennan, giving an update on the building issues at the middle and high schools.

## Request for Artist Proposals: Old Man of the Mountain Profile Awards

The Old Man of the Mountain Revitalization Task Force, Profile Award Subcommittee, seeks professional New Hampshire artists interested in proposing original designs for the Annual Profile Awards. The three identical Profile Awards will be given annually on the anniversary date of New Hampshire's loss of the Old Man of the Mountain's granite profile. The awards will be given to one municipality, one organization, and an individual based on specific or longtime efforts to preserve, protect, or promote one or more of the attributes associated with the Old Man of the Mountain. These include: conservation or preservation of New Hampshire's natural resources and beauty; preservation of its cultural, social, or political history, traditions or structures; leadership, especially of a volunteer nature, demonstrating the independence of thought and spirit symbolized by the Old Man of the Mountain.

The three-dimensional awards must depict the Old Man of the Mountain in some

way through representational or abstract imagery. These prestigious awards should be made of, preferably, native and natural New Hampshire materials. They should be durable to last a lifetime and of a scale and design that permits being held easily in one's hands. The awards must be original and one-of-a-kind, that is, the designs may not be reproduced beyond the scope of this project. If a cast is made, it shall become a part of the State of New Hampshire's archives.

The Request for Proposals is available from the New Hampshire State Council on the Arts. The deadline for proposal submission is February 17, 2004. Visit [www.nh.gov/nharts](http://www.nh.gov/nharts) for more information. Download a copy of the Request for Proposals for details. For more questions, please contact Julie Mento, Artist Services Coordinator at the New Hampshire State Council on the Arts at (603) 271-0790 or at [jmento@nharts.state.nh.us](mailto:jmento@nharts.state.nh.us).

## Kearsarge Community Band

The Kearsarge Community Band, under the direction of Dr. Earl Lord, invites area musicians to participate in its 12<sup>th</sup> season of rehearsals and concerts. The band's first rehearsal is Tuesday, March 30, from 7:00-9:00 pm at the Kearsarge Regional Middle School's Music Room in New London.

This year the band is offering an informal Musician Team Program, whereby high

school students, winter/summer residents, and retirees are welcome to play with and learn from experienced band members. No auditions are required for participation.

Membership information may be obtained from Lori Cox at 735-4044 or Nola Aldrich at 526-2942. Concert date reservations are now being accepted and will be confirmed by contacting Dave Cook at 526-9057.

District 34 Special Election for State Representative Tuesday, March 2  
Bradford Town Meeting Tuesday, March 9

# Outside

by Ann Eldridge

**W**etlands are places where water comes up, where water can't get down, or where water runs along the top on its intended trip to the sea. Wetlands are officially defined by three factors: they are inundated for a specific time period, are underlain by somewhat impermeable soils, and, if left to their own devices, support water-tolerant natural vegetation. You can't for long convince an obligate wetland plant to occupy the highlands, or a dry-footed plant to move to the water's edge. Plants know.



EDGE OF THE POND

Wetlands here take many forms. Swamps are dominated by woody plants - trees and shrubs. Marshes are characterized by soft-stemmed emergent plants. Bogs occur only in the once-glaciated north and consist of a deep layer of gradually decomposing vegetation in a poorly drained area. Vernal pools, usually the smallest and most easily disrupted or destroyed of wetlands, are critical for certain species such as wood frogs, mole salamanders, and lots of odd invertebrates. Rivers and streams, lakes and ponds are wetlands also and each vary in flora and fauna depending on depth, current, mineral content, and temperature.

Biologists speak of energy flow in ecosystems - the movement of chemical energy within a food chain from the primary producers, plants, to herbivores and ultimately to carnivores. There are two intertwining energy flow patterns at work in a wetland. One is the direct consumption of green plants by "grazers", the other involves organisms that depend on organic debris as their food source. In a lake, for instance, it is algae and phytoplankton that starts the food chain. Zooplankton eat the floating greens, small insects eat the zooplankton, fish eat the insects, and on up. In most other wetland types it is the detritus that is the main source of organic output. Dead leaves and twigs are broken down by bacteria and fungi which are eaten by invertebrate larvae which are eaten by ever larger creatures. It should be noted that energy flow is non-cyclical. The chemical energy used at each stage is transformed into new growth of cells and tissue but such activities produce heat, or energy lost. This is essentially why so much more of the small stuff is required on a food chain to supply those few of us at the top.

Wetlands are among the most productive ecosystems on the planet, capable of annually producing more biomass than grasslands, croplands, and most woodlands. Because of the mineral nutrients and organic compounds released by the many detritus eaters, a functioning wetland is able to be self-perpetuating, needing no fertilizers. Periodic rise and fall of water levels is a factor in this high productivity. Flooding brings nutrients or makes them accessible and reoxygenates the system.

So, what's the big deal about wetlands, and why are they increasingly in the news?

One reason is that with increased development and the subsequent paving and lawning of the landscape, we have sped up the rate at which rainwater and snow melt moves off the land, increasing flooding. Wetlands act as temporary storage basins. By slowing down the velocity of flood waters, they also act as sediment traps and slow erosion. For example, a one acre swamp when flooded to a depth of one foot contains 330,000 gallons of water - thus the swamp acts as a natural reservoir storing the excess and filtering it slowly into the groundwater system.

Wetlands are highly studied, and perhaps too highly advertised, as able to filter and remove pollutants. Basic dilution is one factor, but another is the astonishing ability of aquatic organisms to bind minerals and break down organic matter. Increasing research explores the possibilities of using natural or artificial wetlands to process sewage and other pollutants. There is danger, however, in overloading a system by excessive enrichment or toxins, such as road salt and some heavy metals.

Unable to tap deep subsurface waters, human populations out of necessity once built their camps, houses, and farms alongside water. Now we build in proximity to water for views and because there are just too many of us. Wetlands, however, can not function for erosion and sediment control, removal of pollutants, flood abatement, and certainly not for wildlife habitat without naturally vegetated buffers between them and our humanly altered landscapes.

In New England, this ideally means wooded. At least 100 feet is required for good water quality protection from agricultural and household pollutants, and many animals, such as turtles, frogs and wetland birds, need much more room than this. It is said that our ancestral savannah memories make us crave a wide and blank vista, and such are our lawns. Consider, however, that we are 98 % water ourselves.

# February Calendar

## MONDAY, FEBRUARY 2

Cemetery Commission, Town Hall, 10:00 am  
Library Trustees, BML, 7:00 pm

## TUESDAY, FEBRUARY 3

Selectmen, Town Hall, 5:00 pm  
Zoning Board of Adjustment, Town Hall,  
7:00 pm, if there is agenda: call 938-5386

## THURSDAY, FEBRUARY 5

Bradford Economic Opportunity Commit-  
tee, Community Center, 7:00 pm

## TUESDAY, FEBRUARY 10

Planning Board, Town Hall, 7:00 pm  
Bradford Women's Club Board Meeting,  
BACC, 9:30 am  
Kearsarge Area Preschool Parents' Meeting,  
BACC, 7:00-9:00 pm

## THURSDAY, FEBRUARY 12

Bradford Area Community Center Gover-  
nance Committee, BACC, 5:30 pm  
Bradford Economic Opportunities Com-  
mittee, BACC, 7:00-9:00 pm



## Town Clerk and Tax Collector's office

### OFFICE HOURS:

Monday: Noon-7:00 pm  
Tuesday: 7:00-11:30 am, 12:30-5:00 pm  
Friday: 8:00 am-12:00 noon, 1:00-5:00 pm

TELEPHONE: 938-2288, 938-2094

District 34 Special Election for State Representative Tuesday, March 2  
Bradford Town Meeting Tuesday, March 9

## Bradford Bridge March Deadlines

Display ads	February 20
Classified ads	February 23
Articles	February 20

## SATURDAY, FEBRUARY 14

Senior Council Pot Luck Lunch, BACC,  
1:00-3:00 pm

## TUESDAY, FEBRUARY 17

Selectmen, Town Hall, 5:00 pm  
Conservation Commission, Town Hall,  
7:30 pm

## WEDNESDAY, FEBRUARY 18

Parks & Recreation, Town Hall, 6:30 pm

## TUESDAY, FEBRUARY 24

Planning Board, Town Hall, 7:00 pm

## THURSDAY, FEBRUARY 26

Bradford Area Community Center Gover-  
nance Committee, BACC, 5:30 pm

**Children's Story Hour**, Wednesdays at  
Brown Memorial Library, 10:30 am

**Bradford Historical Society**, Old Post  
Office, open most Saturdays from  
1:30-3:00 pm or by appointment, call  
938-5386

## Transfer Station Hours

Wednesday, Saturday, & Sunday  
10:00am-5:00pm

## Emergency Numbers

EMERGENCY FIRE, POLICE & RESCUE  
TELEPHONE 911

Police non-emergency number 938-2522

# Classifieds

**WANTED:** BNSYS (youth sports) needs a refrigerator, preferably with a freezer, for their snack shack. Will pick up. Call Diane at 938-2482.

**Sofa-bed - FREE.** 6 ft. sofa folds out to double bed. Very well made, but old and well worn. Will deliver within 938 area: 938-2868

**FOR SALE.** Volvo roof rack (Thule bars w/ski rack attachment) - \$75.00 fits Volvo 850 and V70 models. 938-2868

**FOR SALE.** Upright freezer - \$75.00 Kenmore 16 Cu. Ft. High Efficiency 30w x 31d x 66h. Will deliver within 938 area: 938-2868

**FOR SALE:** Four studded snow tires 175/70R14 Wintermaster Plus tubeless steel belted radials driven only 10,000 miles. \$150. Call 938-2820.

**FOR SALE.** 2 exterior metal doors with 2 X 6 frames, \$25 each. Electrolux rug shampooer in great condition, \$100. Call 938-2482.

To place a FREE classified ad of 40 words or less: please call Carey Rodd at 938-2692 or e-mail bradfordbridge@mcttelecom.com.



*The Elder Holmes house. We had several responses to our query about this house. It became the Bell house, on Rowe Mountain Road. The Bells sold it a few years ago. It still stands, with much renovation, upkeep, grounds maintenance, and care given to it over the years.*