

# THE BRADFORD BRIDGE

COMMUNITY NEWS BY NEIGHBORS FOR NEIGHBORS

Volume 11, Number 10; Issue 124

October 2001

## Test results in on Marshall property

Officials from the New Hampshire Department of Environmental Services (NHDES) and their contractor, Sanborn, Head & Associates (SHA), met with the Bradford Economic Opportunities Committee (BEOC) and representatives from the Board of Selectmen, the Conservation Commission, the Planning Board, the Bradford Community Corporation, and the Parks and Recreation Committee on September 13. They presented the results of the Site Assessment Survey conducted at the former Marshall property, the approximately 24-acre site now owned by the town. The survey was financed by a \$75,000 grant from the Environmental Protection Agency/NHDES.

The survey assessed several areas on the property for possible contamination and evaluated a capped landfill on the site. It also addressed the requirements and cost associated with four different options for use of the property as a Village Green, a proposal developed by the BEOC with assistance from the landscape architectural firm of Pellettieri & Associates of Warner.

Approximately three cubic yards of soil contaminated with waste petroleum inside the west end of the vacant building on the property will need to be removed and hauled to an approved waste site at a cost of between \$7,000 and \$8,500. A 2,000 gallon underground storage tank containing gasoline mixed with water was discovered and the liquid removed and tested. Additional funding was available for this effort, and a \$5,000 deductible grant may be available to cover the cost of removing contaminated soil from around the tank.

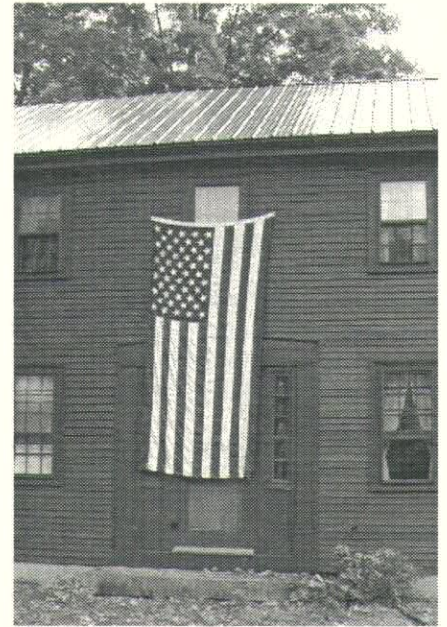
Testing of liquids from the landfill did not show any indication of contaminants above the levels required for safe drinking water. Monitoring is required to detect any change, but the NHDES concluded that the site can be made safe and suitable for recreational purposes.

RESULTS Continued on page 14

## Bradford shows its colors

Like cities and towns all across the United States, Bradford responded to the September 11 terrorist attacks by displaying American flags, from the tiny flag tucked in a flower pot to this grand display on a Water Street home (right). Flags usually flown for holidays line Main Street.

One group of residents met at the Bradford Center Meeting House for a healing circle and participated in the



7:00pm candle lighting on Friday, September 14. Participants also created prayer flags in the Tibetan Buddhist tradition and the flags remain on the lawn in the belief that the elements will help carry the prayers to where they are needed (left).



## KRES at Bradford PTO plans disaster relief fundraiser

Parents at KRES at Bradford will be holding a "Train of Hope" fundraiser to benefit the American Red Cross at Newbury Harbor's Train Station Caboose on Saturday, October 6 from 11:00am to 5:00pm. Kindergarten parent Holly von Svoboda wanted a concrete, positive way for children and parents in the community to contribute to relief efforts in the wake of the September 11 terrorist attacks and conversations at pick-up time outside the kindergarten quickly became mini strategy meetings. Principal Scott Bouranis and the KRSD School Board enthusiastically supported the proposal and donations from area merchants of items for sale or for prizes in a raffle drawing have been generous.

Chili and chowder, hot dogs and sausages, pies and baked goods will be available along with apples, pumpkins, mums, and more.

There will also be a "Pumpkin Patch People" contest for the students at KRES at Bradford. Children can decorate a pumpkin in honor of the many heroes who have come to America's rescue.



## THE BRADFORD BRIDGE



P.O. Box 463

Bradford, NH 03221

Telephone: 603-938-5029

FAX: 603-938-5702

Email: bradfordbridge@conknet.com

### VOLUNTEER STAFF:

Lyn Betz, Editor & Publisher  
Meg Fearnley, Assistant Editor  
Diane Planchet, Proofreader  
Denise Fairbank, Ad Manager  
Debbie Lamach, Business Manager  
Carey Rodd, Classified Ad Manager  
Betty Hague, Calendar Editor  
Vern & Marion Hall, Subscriptions  
John & Elinor Robie, Distribution  
Gene Schmidt, Distribution  
Milly Kittredge, Archivist

### Subscription Information

For those wishing to receive the Bradford Bridge by mail, the annual subscription price is \$12 to cover the cost of mailing. To subscribe, please send a check to the address above.

### Advertising

The Bradford Bridge is a free community newspaper supported by advertisers. To place an ad, call Denise Fairbank at 938-2973 or send a FAX to 938-5263. Ad deadline is October 20.

### Submissions

The Bradford Bridge is written by neighbors, for neighbors. Anyone is welcome to submit articles and/or photographs of interest to the community. Send articles or letters to Lyn Betz at the address, FAX number or e-mail address above by October 20.

## Selectmen's Update

The Board of Selectmen would like to express condolences to anyone touched by the tragedies of September 11 and offer praise and support for the volunteers and rescue workers at the various sites. Looking to the future, we are looking for volunteers to prepare an emergency plan for the town and also inventory the resources available should our infrastructure in some way fail. If you can lend a hand please call Cheryl at the Town Hall.

East Washington and Fairgrounds roads have been paved and sealing, tarring will commence in October and be completed before snow flies. Surveying and boring have commenced at the Fairgrounds Road bridge by Pleasant View Road. Hopefully, the construction contract will be ready to put out to bid next year.

The Highway crew has obtained another used state truck and at least two trucks will be disposed of soon.

Problems of misuse continue at the transfer station and the construction and demolition container. Ken will meet with the board and the Chief of Police and hopefully we can reach a solution that will make it costly for the scoff-laws to continue.

Assessment books will be mailed out to each property owner on about October 1. If you feel your assessment is unjust please make an appointment with our assessing contractors. Their telephone number will be listed in the assessment book.

The Firehouse has a new piece of equipment—a 2001 Ford 450 Rescue Truck. This magnificent vehicle was funded 75% by Fire Department funds and 25% by Rescue Squad funds. We are fortunate to have these active departments and to have the residents, both year-round and summer, who donate to these organizations. Not one dollar of tax money went into this truck.

Due to a resignation, the Police Department is in need of an Animal Control Officer. If you think this may be your forte, contact the Chief.

## News from the Town Clerk & Tax Collector

August 2. Simon Leo Foisey was born to Andrew and Patricia in Concord.

August 4. Bertrand Pinard and Heddy Soule were married in Hillsboro.

August 4. Erik Anderson and Sarah Hoffman were married in Sandwich.

August 11. Robert Dunlap and Jessica Byfield were married in Bradford.

August 25. Matthew D'Amore and Lauri Lapointe were married in Sanbornton.

September 6. Gavin James Cooper was born to Heather and Todd in New London.

September 8 Daniel Cooch and Barbara Taylor were married in Bradford.

September 9. Cory Michael was born to Jaye Stilwell and Stephen Bowie in New London.

September 13. Gabriel William Noury was born to Jessica and Justin in Concord.

September 14. Albert Pringle and Beth Eldridge were married in Bradford.

The Town Clerk's office will be able to process moped, boat, and off road registrations by the end of the year. Also, we will be handling hunting and fishing licenses for your convenience.

The new assessments will be mailed out soon. You will have the opportunity to speak with the assessors if you have any questions or feel that there has been an error in your assessment.

The office will be closed Friday, October 5 for Motor Vehicle training and Monday, October 8 for the holiday. You may renew your motor vehicle registration by calling the office and mailing in your checks. The completed registration will be sent to you by return mail.

—Susan Pehrson

## HENNIKER VETERINARY HOSPITAL

PROFESSIONAL ASSOCIATION

Small Animal & Equine Practice

Alyssa J. Brust D.V.M.

Robert A. Brust D.V.M.

24 Hour

Emergency Service

House Calls Available

Henniker,  
New Hampshire

603-428-3441



2x2

**Ayer & Coss**  
FUELS

**24 HOUR SELF SERVICE  
GASOLINE & DIESEL PUMPS**

*Serving the area's heating needs for more than 51 years*

FUEL OILS & LP GAS / COMPLETE HEATING SERVICE

**938-5335**

Route 114, Bradford • Hall Ave., Henniker . . . 428-3333



## BNKP struggling

The Bradford/Newbury Kindergarten and Preschool has a room, and has eleven three- and four-year-olds enrolled for the 2001-02 school year but had to postpone its opening date because a five-month search for a qualified teacher failed to find anyone to fill the position. Teacher Susan Kingsbury retired from the program last May and the kindergarten portion of the program was discontinued with the advent of public kindergarten in the district.

To forestall complete closure of the program, parent Heather Brady has agreed to fill in one day a week and recruited a friend, Lisa Louis, to fill in on a second day. The program will open on October 3, with classes held on Wednesdays and Thursdays and an optional, parent-run session on Fridays from 9:00-noon.

BNKP board members are asking for help from past parents and board members to identify potential candidates (the position requires an Associate's Degree with 12 early childhood education credits) in hopes that the program can be regularly staffed. They hope to offer two mornings (9am-noon) for three-year-olds and three mornings for four-year olds, but are considering combining the two age groups if necessary.

BNKP Treasurer Faye Torro commented, "The value of this program, not only to the children in the community but to the community itself, is priceless. We are hoping that we can find our next "Mrs. K" and keep this very successful and important program open."

Interested candidates should contact BNKP President Sarah Harvey at 938-2624.

—Lyn Betz

## Route 103 project raises concerns

Selectmen met on September 10 and on September 19 with a small number of concerned residents to discuss next year's widening and repaving of route 103 through Newbury and Bradford. Not much is known at this time about the scope of the project. Surveys of the road are just getting underway. Detours and traffic planning were the main focus of the selectmen's meetings. Our experience with the Route 114 disruption, which had been labeled as a "maintenance project," has taught us that we must respond quickly before plans are finalized at the State level.

Traffic disruption mitigation is one part of the issue but there are several larger and more lasting ramifications. The town-owned Whitman Park is located just off the old railroad right-of-way downtown, accessed behind the library on Church Street. Well known to only a small number of residents, this 1.8 acre park was given to the town by the Whitmans as a war memorial for a relative. Along the ledges adjacent to route 103, it harbors a long list of wildflowers including painted trillium, trailing arbutus, and gay wings. As the town continues to grow, this small, forested in-town park will become increasingly valuable. Potential blasting of ledge here and the relocation of power lines could seriously degrade this land.

Several people have voiced the fear that highway projects are driven by private corporation interests and not need assessment of resident traffic patterns. We may never know. The Office of State Planning warns that increasingly "improved" highways bisecting a town fracture a sense of community as well.

Many people from Newbury and Bradford have already called or e-mailed the State Dept. of Transportation with their concerns. Another effective method to be heard is to contact our representatives.

J.P. Demers, Bureau of Environment D.O.T.: tel. 271-4048, e-mail [jdemers@dot.state.nh.us](mailto:jdemers@dot.state.nh.us)

Senator Bob Flanders: tel. 271-2111, e-mail [flandersrb@aol.com](mailto:flandersrb@aol.com)


Representative Barbara French: tel. 428-3366

Representative Beth Rodd:tel. 938-2692, e-mail [c\\_rodd@conknet.com](mailto:c_rodd@conknet.com)

—Ann Eldridge

938-2315 40,000 BOOKS  
**Books by the Lake**  
 Buying & Selling  
 Quality Used Books in Most Fields  
 Route 114 at Lake Massasecum  
 Wed-Sun 10:00-5:30

Septic System Designs  
 Test Pits, Perc Tests  
 Site Assessments  
 Land Planning  
 Permitting



**ROBERT C. STEWART, Jr.**  
 938-2256 Main Street

♥ COOKIES ♥ MUFFINS ♥ SCONES ♥

CRUMBLE & MORE ♥ GOURMET COFFEE

We've got the tastiest and cutest pumpkin faces around—yummy, decorated chocolate cupcakes with buttercream frosting and sugar cookies. Perfect for Halloween parties!



**The Sweet Patch**  
 Café Bakery

RTE. 103 • SO. NEWBURY, NH  
**938-2296**

CRUMBLE ♥ GOURMET COFFEE ♥ GIFTS



♥ COOKIES ♥ MUFFINS ♥ SCONES ♥

**Video Pursuit**

DVD rentals \$3.00 for 2 Nights *3x2*  
 All Old Movies only \$1.00 per night everyday!!!

Main Street • Bradford  
 Open 11 to 9 everyday  
 938-2111

**NEW LOCATION!!!**  
 67 West Main Street  
 Bradford

**"Escape from your world; watch a movie!"**



## OBITUARY

### PAULINE DISHMON

Pauline Dishmon, 73, died suddenly on September 8 at Brigham and Women's Hospital in Boston. A Burlington, Mass. resident for a short time, Pauline moved to Bradford fifteen years ago upon her retirement. She was raised in Reading, Mass. and was educated in the Reading school system.

She served in the US Air Force stationed in Ft. Bragg, North Carolina. She worked for H.P. Hood as Assistant Editor for *Spotlight* magazine. Pauline then worked for Butterworths Publishing Co. in London, England. She retired from the *Winchester Star* where she worked as the Assistant Editor, and Contributing Editor of the *Arlington Advocate*. A writer of children's stories, Pauline was published in magazines such as *Highlites for Children*. She was also the Book Review writer for the *Bradford Bridge*. She was a member of the Old South United Methodist Church in Reading where she taught Sunday school for many years.

Memorial contributions may be made in Pauline's memory to the National Multiple Sclerosis Society Mass. Chapter, 101 First Ave., Waltham, MA 02154.

## 2001 NH Legislation

Each year, the New Hampshire Legislature enacts many bills that have direct or indirect affect on how local government is conducted. A review of the 2001 Chapter Laws, provided by the NH Municipal Association, identifies some that might merit further study by various boards or committees in Bradford:

**Ch. 9 Cemetery Plots** requires that transfers of ownership of cemetery plots or burial spaces meet any applicable regulations established by the municipality or the cemetery trustees under RSA 289:2.

**Ch. 187 Selectmen Authority** allows Town Meeting to authorize Selectmen to acquire or sell property and to expend capital reserve funds created for the purchase of land

**Ch. 274 Penalty Provisions** establishes "violation" as the type of penalty when a person violates a municipal regulation that does not specify the penalty or offense classification. This chapter also provides a \$25 civil penalty as well as a fine of not more than \$50 for a person who fails to license a dog.

**Ch. 285 Trash Burning Ban** prohibits the open burning of domestic waste such as household trash, packaging materials, plastic, painted or treated wood, coated cardboard, oily rags, and animal, vegetable and kitchen waste. Untreated wood, leaves, brush or paper products generated at a residence are not included. NHDES is required to develop a dioxin reduction and control program and educate the public about the environmental impact of backyard burning.

**Ch. 200 Signs within Right-of-Way** establishes guidelines to permit business owners abutting, and with driveway access to, a state highway to place location/direction signs within the right-of-way.

**Ch. 90 Timber Tax Yield** changes the procedures for assignment of an operation number so that the number is assigned locally and sent to DRA. It also allows appeals to go to the Bureau of Tax & Land Appeals.

**Ch. 211 Gravel Tax** makes several changes relative to the excavation tax. Appeals are sent to the BTLA, excavations done by municipalities for their own use are not subject to the excavation tax, authorizes the municipality to assign the operation number, and provides that DRA is notified when an owner who filed an intent to excavate no longer owns property in the town.

Copies of the bills, necessary to fully understand the provisions, are available from local legislators, on-line at [www.state.nh.us](http://www.state.nh.us) or from the NHMA.

### DUMONT'S BARBER SHOP

Wednesdays 8:00-6:00

Main St. Denis Dumont, Owner

### Martin Energy

\* \* COAL \* \*

Ask about our new & used stoves  
Hand Fired Heating Units

938-5531

### Hugo's Electric, Inc.

Licensed & Insured

RESIDENTIAL • COMMERCIAL

938-5573

3191 State Rte 114, Bradford

Representing  
both Buyers<sup>3</sup>  
and Sellers...

New Amesbury  
Realty  
456-6161

Tom Greenlaw, Broker  
East Main Street, Warner, NH  
FAX 456-6162



Route 114 - Bradford  
(603)938-5161 - (800)287-9889

### Power Equipment

Sales - Service - Rentals

Stihl & Husqvarna  
forest & garden  
power products

Tools & Safety Clothing

### Lumber

Millwork - Plywood  
Treated Lumber  
Roof & Floor Trusses  
Masonry Supplies  
Kitchens

### Building Materials

Tru-Test Paints & Stains  
Glass & Screen Repairs  
Makita Power Tools  
Garden & Lawn,  
Electrical & Plumbing Supplies

### Hours

Monday - Friday: 7am - 5pm  
Saturdays: 7:30am - 5pm





Alan Cragie, baseball director of Bradford/Newbury/Sutton Youth Sports, receives a check for \$400 from Donald C. Keith, Master of St. Peter's Masonic Lodge in Bradford. Attending the presentation are Vernon Hall, Alan's sons Alex and Ryan, and Michael Ripberger.

## Bradford/Newbury/Sutton Youth Sports

Fall is here and that means soccer in Bradford! This year we have over 125 children participating in the program. Games are held Saturdays at Warren Brook Park with the younger players facing off in the morning and the older kids competing in the afternoon against teams from the New London, Warner, and Sunapee areas. Come down, cheer on the athletes, and enjoy the action!

A major fundraiser for the Youth Sports programs is coming up on October 11. The First Annual BNSYS Golf Tournament will be held at the John Cain Golf Club in Newport. We have a bunch of great prizes and everyone should enjoy this fun event. To enter as an individual or a team, or for more information, please call Jim Bruss at 938-2069. If you're not a golfer, sponsorships are available and would be greatly appreciated.

On Saturday, September 15 the "field crew" of BNSYS aerated and fertilized all of the sports fields; at Warren Brook Park, the Bradford Elementary School, and Brown-Shattuck Park. A sincere thank you goes out to John Mock of the Lumber Barn for his generous donation of lime and fertilizer for this project. Thanks also to Chris Mock for the donation of his time and equipment.

BNSYS also wishes to thank the Naughton Family of Naughton & Son Recycling for their generous donation of bleachers for our fields. They were much needed and are receiving a lot of use this fall! Thanks from the Board of BNSYS and the community.

—Joe Torro, BNSYS

## Meeting for Area Democrats

The Henniker Democrats will be meeting on Tuesday, October 2, at 7:00pm, at Henniker's Grange Hall. Special guests include State Representatives Barbara C. French and Beth Rodd, State Senator Bev Hollingworth, House Democratic Leader Peter Burling, and Leader of the state Democratic Party Kathleen Sullivan. All area democrats and independents are cordially invited to attend. Refreshments will be served. For information, call 428-7086.

—Judith Englander

## Girl Scout Volunteers Needed

Help Girl Scouts of Swift Water Council reach every girl everywhere this year as we embark on a new membership campaign. Girl Scouts in Bradford and Newbury need your help. This community has the perfect opportunity this year to begin a Daisy troop as Kindergarten becomes part of the public school system.

Why be a Girl Scout volunteer? Because your talents could encourage young girls as they explore a big, challenging world. In return, you will be rewarded with the knowledge that you are helping to change the world we all live in, one girl at a time.

There are many volunteer opportunities, but we are most in need of troop leaders and assistants. Girls in your community need role models. Contact Karen Green at 1-800-654-1270 ext. 115 and start making a difference today.



# Bowie's Market

2x3 We will have  
Halloween candy  
& cookies!

126 East Main Street, Bradford, NH  
938-5533 • Fax 938-2609

**THE LITTLE STORE THAT HAS IT ALL! • OPEN 7 DAYS**  
Mon.-Thu. 5:30am-8:30pm, Fri. & Sat. 5:30am-9:00pm, Sundays 6:00am-8:00pm

Credit & Debit Cards • WIC • Food Stamps Accepted



**Henniker Pharmacy**  
YOUR FRIENDLY PHARMACY  
428-3456

**RELIABLE USED CARS**

**From \$500 & Up**  
with State Inspection  
& 20-Day Plates

*AutoCraft*

**938-2623**

State Inspections  
24 Hr Road Service & Towing





From the "secret" recipe files of

**Chef Jim Horgan**



## Thistle & Shamrock Inn

### PUMPKIN BISCUITS

A fun variation on baking powder biscuits. Great with a plate of fluffy scrambled eggs!

Sift into a mixing bowl:

- 1½ c. all purpose flour
- 3 tsp. baking powder
- 2 Tbsp. sugar
- 1 tsp. salt
- 1 tsp. cinnamon

In a separate bowl, combine:

- 1/3 c. melted shortening
- 1 c. boiled, well-drained, mashed pumpkin
- ¾ c. milk

Stir wet ingredients into dry and mix lightly with a fork. Turn dough onto a floured board and knead lightly. Pat dough out to ½ inch thickness and cut with a biscuit cutter. Bake on a greased or papered cookie sheet for 18-20 min. at 450°F.

Enjoy!



## The Community Workshop

The Community Workshop is a local group from Bradford, Newbury and surrounding towns that meets once a month, usually the second Thursday of the month, at the Friendship House in South Newbury. Members come together to work on projects for the community and to learn, educate and share ideas with one another.

Some of the current projects we work on are sewing quilts for the Pediatric Unit at the Dartmouth-Hitchcock Hospital, knitting lap robes for local nursing homes, donating clothing and bedding to the Haven in the Upper Valley and making craft items which we donate to the Newbury Community Church Fair to show our appreciation for making the Friendship House available to us for our meetings. Our Christmas luncheon, complete with music and celebration, includes a gift exchange among members as well as a collection of special gifts wrapped and presented to the children who live at the Haven.

The work session is followed by an informal lunch at noon and then, for the program, members either present the topic or guest speakers with expertise are invited to share their field with us. Recent speakers have presented programs on state, county, and town government, financial planning, antique clocks, guidelines for those who find themselves suddenly single, town politics, and, always a favorite, a visit to the local library with shared book reviews by staff and members of the Community Workshop.

Programs presented by members have included home decorating and craft projects, gardening lectures followed by a plant exchange, and armchair slide shows and travel-ogues.

Every year the University of New Hampshire Extension Service, of which the Community Workshop is a spin-off, sponsors a student through the 4-H program to go abroad for six months where the student experiences home and family life in a selected country. When the student returns, he/she then presents a program based on her/his experiences abroad to interested school and community groups. The program includes a slide show, lecture, and a meal prepared by the Community Workshop based on recipes brought back by the student, always a popular event.

Our next meeting, on October 11, will be our annual meeting at which time we plan our schedule of events for the coming year and election of officers. We welcome new members with new ideas and encourage anyone to join us for these creative and informal meetings. Shirley Markie is currently president of the Community Workshop. For more information you may contact Shirley at 938-5023.

—Clare Bensley

Carpet ♦ Vinyl ♦ Ceramic Tile ♦ Hardwood ♦ Area Rugs

2x2

**NEW LONDON ♦ FLOORCRAFT**

and *Creative* ♦ *Kitchens*

Carl & Gail Olson  
Route 11, Wilmot

526-2600  
800-870-4646

Attention Homeowners!!!

If you want to sell,  
NOW is the time!!!

Call Colby-Linehan today.



**Colby-Linehan**  
**Real Estate Inc.**

P.O. Box 173 • Warner, NH 03278  
603-456-2344



2x2  
iamnet.USOnline.com  
Your One Stop Internet Support Shop

- Internet provider
  - Web hosting
  - E.Commerce
  - 4 free mailboxes
  - \$10 for 25 hours
  - 56K v.90 modems
  - Fastest T1 around
- 18 Ring Hill Rd. Bradford, NH  
**938-2127**



# Planning Board Notes

The Planning Board held an unusual Public Hearing in September and a little background may help to understand the process that was followed. An application for a building permit, using what has become known as "Lord Road", was denied by the building inspector because of the question of access. The Planning Board's role, under the State statute, is to provide for the Board of Selectmen a "review and comment" on whether or not the permit should be issued, based on the objectives in the Master Plan and principles of good planning. The Selectmen then decide the issue of granting a building permit.

The Planning Board's hearing was held on September 11. Attorney Paul Semple, representing owner Jennifer Sayre, presented the case in favor of granting the permit. Mr. Semple outlined the history of the property including the layout of Lord Road. The road was laid out by Town Meeting in 1800, running north from Johnson Hill Road then turning west. The location is described by naming the property owners involved and no distances are stated. In 1854, a petition was placed on the Town Meeting warrant asking that the road be discontinued. The vote was "to leave it to the selectmen's discretion"; no indication has been found of what, or whether, any final action was taken by the selectmen.

Maps of the town from the late 19<sup>th</sup> into the 20<sup>th</sup> century do not show that road and presumably abutters came to view the road as discontinued - meaning no longer open to public access. Subdivisions of the land in question in 1978 and 1979 refer to the "old road", but do not refer to it as a public road. The New Hampshire Supreme Court, however, has ruled that there must be evidence of a formal town vote to discontinue a road in order to finalize the action. Bradford Town Counsel Timothy Bates informed the Selectmen and the Planning Board that the road should be considered as Class VI and that

both boards should hold public hearings to carry out the provisions of RSA 674:41.

Mr. Semple stated that his client wished to combine the several lots of an earlier subdivision and build a single family house, using that portion of Lord Road leading in from Woodview Heights Road - a distance of 450' rather than the 1200' from Johnson Hill Road.

Abutters expressed concern about what they had always considered merely a right-to pass contained in their deeds and had no knowledge that a public road was involved. Public in attendance expressed dismay at the lengthy procedures that have been involved. At the close of the public hearing, the Board discussed the presentation and voted to recommend to the Board of Selectmen that one single family home be allowed and that the access should use that portion of Lord Road between Woodview Heights Road and the Sayre property.

This has, indeed, been a lengthy process but confusion over the status of the road in question, prior subdivisions that did not identify it correctly, and deeds that do not refer to the right-of-way in question combined to create a difficult situation to understand and handle correctly. The decision of whether or not to issue the building permit rests with the Board of Selectmen.

Also in September, the Planning Board approved a form to be sent when it appears that a site plan review might be required and the property owner has not yet applied for one. The Board would then work with the owner to determine the information necessary to complete the review. A public hearing was held to make minor changes to the Site Plan Review Regulations to clarify the submission requirements and complete the Application Package.

Work continued on defining a proposed Village District and outlining the uses that will be permitted in the new District.

—Marcia Keller

**REACHING HANDS  
BRIC-A-BRAC SHOP**



Respectable Items  
at Reasonable Prices

Ring Hill Road,  
Bradford 938-2820

Proverbs 31:20 Weekly Specials  
Bring Ad for 10% off purchases!  
M,Tu,W by chance; Th,Fri,Sat 10-4

**Also lamNet—Internet  
Access & Marketing—938-2127**

**WALCO  
MECHANICAL CO.**

REFRIGERATION, HEATING,  
AIR CONDITIONING, ELECTRICAL CONTRACTORS

COMMERCIAL • INDUSTRIAL • RESIDENTIAL

SERVICE • SALES • INSTALLATION

MAINTENANCE PROGRAMS


SYSTEM EVALUATIONS

**938-2926**

BRADFORD, NEW HAMPSHIRE

*paid thru Dec*

**BRADFORD**



Three bedrooms and two baths. Private yet convenient location on 1.7 acres. Hardwood and tile floors. Attached garage and one under. Comes completely applanced. Clean and well maintained home. New leachfield in 2001. Paved drives. Must see! **\$128,500**

ELLIOT HANSEN ASSOCIATES  
◆ A REAL ESTATE COMPANY ◆  
603-763-9999

**Breezy Hill Self Storage**

*2x2* **Opening in October**

**Call 938-5826**



428-7076

## Wright Travel

WORLDWIDE TRAVEL ARRANGEMENTS  
Henniker Mini-Mall Nancy Wright  
Main St., Henniker Manager

927-4973 *1/2* Route 114  
North Sutton

## ALL & AWL REPAIR

Small Engine Sales & Service  
Tractors • Harness & Tack Repair  
Art, Kirk, Lynne & Kris Chadwick  
Hours: Mon-Fri 7:30-5:00, Sat til 1:00

BRADFORD  
COURTYARD

## Antiques and Artist Tree



Whether you're looking  
for something particular or  
just looking around, stop  
in and see what's new.  
We Love Browsers!!

938-5045

OPEN: Wednesday thru Sunday 10 to 5

We are pleased to welcome...

## Zinom's

HOME \* GARDEN \* CLOTHING  
SHOPPE

938-6123

OPEN: Wednesday thru Saturday 10 to 5

124 - 128 E. Main St., Bradford  
(behind Bowie's Market)



## Rainbow Garage

*"Honesty is our only policy"*

Stop In for All Your  
Automotive Needs!

539 Route 103  
South Newbury, NH  
Call us at 938-5100

PARTS *+* PLUS

## CarCareCenter

The Next Generation of Automotive Service



# Church News

*From Lynne E. Hubley*

**Women's Christian Guild:** The ladies will meet on Friday, October 5 from 11:00am-1:00pm for a discussion on "How we can respond?" Everyone is asked to bring a lunch item to share. Beverage and dessert will be provided.

**American Baptist Women's Ministries:** The October meeting will be held Tuesday, October 9 at 7:00pm. Vicki Simonds will do a Harvest Pumpkin arrangement demonstration. Each woman will be able to make an arrangement and bring it home. We will also be dedicating our White Cross Mission items that we have been collecting.

**Food Pantry:** The pantry will be open Wednesday, October 17 from 6:00-7:00pm. Food can be requested at other times by calling the Church office at 938-5313.

**Spaghetti & Meatball Dinner:** This dinner to benefit our nation will be held on Saturday, October 20, with sittings at 5:30pm and 6:30pm. The youth group will be serving the meal. A patriotic sing-a-long will be held after dinner.

**Annual Meeting:** The annual meeting will be held on Sunday, October 21 immediately following the worship service. A light luncheon will be provided during the meeting.

**Youth Group:** Grades 5-8 will meet at the Church on Wednesday, October 24 from 6:30-8:00pm for a Harvest Festival. The festival will include pumpkin carving, harvest goodies and some discussion and activities around the issue of "evil."

## South Newbury Union Church News

Plans are being made for a Roast Beef Dinner on Saturday, October 20. The dinner will be held at the Friendship House from 5:00 - 7:00pm. There will be homemade desserts, including apple crisp, to top off the meal. Come for good food and conversation with friends old and new. Delivery and take-out will also be available.

Dinner will be \$8 for adults, \$4 for children 6 - 11, under six eat free. Friendship House is located at the South Newbury Union Church on the corner of Village and Sutton Roads. It is handicap accessible. For more information call 938-5369.

—Gail Bostic

*2x2*

## Bradford Women's Club Update

The Bradford Women's Club executive meeting will be on October 9 at 9:30am at the Bradford Area Community Center. A craft workshop will follow at 10:30am at the Mountain Lake Inn on Rt. 114. Bring a lunch.

The Women's Club general meeting will be on October 16 at 1:00pm at the First Baptist Church Vestry. The program will be "Living with Arthritis" by Dr. R. Blodgett. The evening workshop will be October 23 at 7:00pm at the Mountain Lake Inn.

—Barbara Vannata, President

  
**Country Spirit**  
RESTAURANT & TAVERN

*"In the only Henniker on earth"*  
Jct Routes 202, 9 & 114 Henniker NH 03242

428-7007

Angus Prime Rib  
Real Hickory Smoked BBQ  
Prime Rib  
Freshest of Seafood  
Vegetarian Entrees

Open Daily 11-9





# Real Estate Hints:

## A Time to Reflect

by Laura Hallahan

The world became a much smaller place on September 11, 2001. Showing and selling houses seemed so unimportant and insignificant. The market was already slowing down, even with the low interest rates, and everyone wonders how this tragic event will play out for so many businesses and industries.

Ironically, the World Trade Center was sold to an investment group in July, the first time in its 30-year history. A 99-year lease of the 11 million square foot complex garnered \$3.2 billion for the Port Authority of New York and New Jersey. Developer Larry Silverstein says the twin towers will be rebuilt, but whether it will be an exact replica or some version thereof is yet to be decided.

The destruction of the World Trade Center could actually provide a short-term boost to New York's office property market, according to local brokers. Many of the displaced companies are now trying quickly to find new space for their employees. Some fear, however, that the tragedy could ultimately lead businesses

to abandon the city and leave behind an oversupply of offices. It is estimated that there is 400 million square feet of office space in the city and less than four percent is vacant.

Everyone is trying to do his or her part to help the many victims of the tragedies in New York, Washington and Pennsylvania. The National Association of Realtors established a housing relief fund to help pay the mortgage and rental costs of the families. An initial contribution of one million dollars was made and realtors from around the country are contributing so that those affected do not have to worry about losing their homes. The New Hampshire Association of Realtors recently contributed \$10,000 to the fund.

Even though we live in a beautiful part of the country and our lives seem relatively calm and quiet, our country has changed forever no matter where you live. Nothing will be the same but I, for one, am grateful to be part of this community and hope we keep the patriotism and support going long after the dust settles.

# Library Lantern



Thanks to Wacky Lucas, our lantern is alight again, just in time for those dark autumn evenings. Look for our walkway and steps project by Marcus Bateman to be finished in the next month. Marcus will replace the old, cracked concrete with a brick walkway extending from the Library front out to Main Street.

Young Children's Story Time will start up again this month. The first meeting will be on Wednesday, October 3 at 10:30am, and every following Wednesday at the same time. All area youngsters and their caregivers are welcome to attend. The program will last about thirty minutes.

The final book sale of the season will be on Saturday, October 6 from 9:00am until 1:00pm. Enter at the lower level on Church Street. We have added many new books.

The library now has e-mail if you would like to contact us that way. The address is: brownml@conknet.com. Feel free to use this method to request new books, inter-library loans or to reserve a book.

### LIBRARY HOURS:

Monday, 9:30am-8:00pm  
 Wednesday, 9:30am-5:00pm  
 Saturday, 9:30am-1:30pm  
 Telephone: 938-5562

## Dodge's General Store has a new owner!

3x2  
 Stop by, Say Hello and  
 Check Out All the Changes



OPEN 7 DAYS

102 EAST MAIN STREET • 938-2258

## Thistle and Shamrock Inn



### & Restaurant

11 West Main Street, Bradford, NH  
 03221

"Bed and Breakfast Accommodations"

Casual Gourmet Dining  
 5:30 to 9:00 p.m.

Out-of-town guests?  
 Our rooms include  
 breakfast so you can  
 sleep in!

938-5553

(Closed Mondays and Tuesdays)



## September Selectmen's Minutes

**September 10.** Bob Stewart, representing the Bradford Area Community Center, met with selectmen regarding the Fire Chief's requirement that magnetic door closures be installed on all interior doors at the community center. Mr. Stewart indicated a letter from the selectmen addressing the matter would allow the center permission to operate until next budget year. Other fire requirements included fire extinguishers and doors closed during the day. Chris Frey will check with the Fire Chief, Marc Goldberg, for exact specifications to be included in the letter. Mr. Stewart also reported the carpet on the lower floors is being removed because of problems with mold. The floor will be painted for now, and will eventually be tiled.

Bob Foor, chairman of the planning board, met with selectmen to discuss several issues. He explained the hearing for the Sayre property would take place on September 11, 2001. He then requested specific procedures for follow up on requests placed to the selectmen and building inspector. Past correspondence on Chivers has gone unanswered by both groups. Selectmen requested the planning board deliver a copy of their letter to the selectmen and they will pursue. Mr. Foor questioned the driveway permit procedure. Old forms are being issued and the planning board is not receiving the permits approved by the Road Agent. The construction permit portion of the permit is not being completed. Mr. Foor also requested copies of all building permits. Cheryl remarked the collection of the permits was a job, as there are many. Mr. Foor requested a list of permits. The list maintained in the selectmen's office is of name, date and general type of work and does not specify location. The planning board wishes to track new building in town to aid in its long term planning work. Milly Kittredge offered to prepare the list from town files.

Meg Fearnley, representing the library, met with selectmen about a possible pull-off area off of Main Street. Selectmen questioned the paving, the size and the power pole location and the possible interference with the septic system. Selectmen requested a sketch to outline the plans.

Selectmen opened a public meeting to discuss the use of town roads as detours during next summer's Rte. 103 resurfacing. Bindy Glennie made comments on the project in general and the removal of the

ledge on Rte. 103. Glennie objects to the removal of the ledge and expressed her feelings on the project as one benefiting the Okemo/Sunapee region, and not beneficial to Bradford. Ms. Bede of Old Warner Road also questioned the traffic increase on Old Warner Road with regard to the school. Chris Frey explained the process of holding public hearings before the scope of the project is established and approaching the state with options that would benefit the town. He suggested people write the Department of Transportation with their objections to the project itself. Glennie also requested the selectmen give consideration to drainage on Main Street during the road rehabilitation. Bicentennial Park replanting has been postponed several times because of the indecision of the town/state right of ways and drainage.

Selectmen met in non-public session with Chief James Kirby to discuss personnel issues. No decisions were made.

Mitchell and Bates have notified the town of changes in the law regarding the authority of selectmen to purchase and sell town land. The statute must be adopted at town meeting and will then be in force until rescinded.

Terra Map will be integrating our tax maps with the assessing files. Computers will be placed for the public to view these maps and assessing files. Central NH Regional Planning will provide the town with a CD Rom from Granit of contours, wetlands, and a variety of other overlays for this area. The cost of this disk is \$10.00. We may need to include the cost of a color printer to print 11"x17" paper in next year's budget for the best results in printing this information.

**September 17.** Barbara Vannata, Jane Johnsen and Sue Vitale, representing the Bradford Women's Club, met with selectmen to request assistance in the completion of the Bicentennial Park rebuilding. The Park was dismantled last summer to correct the drainage problems on East Main Street. Selectmen agreed to authorize the Highway Department to assist in the replanting and repairs. Chris Frey indicated the fence would be replaced after all other changes were made. The work will be coordinated with the Road Agent.

James Kirby, Chief of Police, met with selectmen to discuss the hiring of a part time officer. Andrew Tarnowski, from Sutton, is a certified part-time officer and has recently completed his BA in Criminal Justice. The selectmen authorized the

hiring.

Selectmen moved to non-public session to discuss contract matters with Avitar Associates president Gary Roberge. After the session selectmen announced the new property values would be mailed by the first week of October. Cheryl was authorized to have another phone line installed for the assessment meetings.

**September 24.** Jane and Bill Lucas, representing the Bradford Parks and Recreation Committee, and Joe Toro, representing the Bradford Newbury Sutton Youth Sports (BNSYS), met with selectmen to discuss maintenance of Brown Shattuck Field. Both groups wish to prepare an agreement with the BNSYS maintaining the field in the spring to July 4<sup>th</sup> and again after Labor Day. The town would maintain the area in July and August. The BNSYS would also arrange to secure the dugouts with gates and place fencing to control parking for the field. Selectmen agreed with the concept and suggested the agreement be placed in writing and submitted for final approval and signature.

Peter Richard of County Road met with the selectmen regarding the cease and desist on his building. Mr. Richard had been mailed a certified letter regarding his zoning violations but had not received the correspondence due to the incorrect address. Selectmen instructed Cheryl to re-mail the information on building on a class six road. Mr. Richards gave the selectmen his new address.

Selectmen voted to sell one of the town pickup trucks to Ivar Martin for \$1800.00. The truck was to have been taken to the state auction for sale and was expected to net the town the same amount of money.

Boat Agent forms were signed for the town clerk. The Town clerk will soon be able to process boat registrations in Bradford.

Selectmen reviewed the comments from the planning board following their hearing on the Sayre property located on Johnson Hill. The selectmen will have town counsel prepare a letter to Sayre's attorney regarding the merger of lots prior to the issuing of the building permit.

New Rates for town medical insurance have been set by the NH Municipal Association and the increase will be 27.5%.

The Town of Sunapee has rescheduled its discussions on the formation of a new county to October 9, 2001.

—Excerpted from public minutes prepared by Cheryl Behr



# Legislative Report

By Representative Barbara C. French



"Darkness cannot drive out darkness; only light can do that. Hate cannot drive out hate; only love can do that. Hate multiplies hate, violence multiplies violence, and toughness multiplies toughness in a descending spiral of destruction. The chain reaction of evil—hate begetting hate, wars producing more wars—must be broken, or we shall be plunged into the dark abyss of annihilation." —Martin Luther King, Jr.

I am shaken by the horror inflicted on our country on September 11. My deepest sympathy and prayers are with the victims, their families and the emergency response teams. As the world watches our response to this unimaginable violence, the United States can set a profound example. I hope that our government will exercise restraint so that no more innocent lives are destroyed.

At the same time, we need to continue meeting our human needs such as the education of our children, job security for our workers, adequate health care, and a clean environment. During

this critical time, it is important that we not forget to take care of what is happening at the state level. We need to carefully watch our state's revenue; I am very concerned about our state's budget deficit. Funding decisions made at the federal level will have an effect on the state and we may need to pick up the differences. We need to remember that any programs that are mandated and that are dropped from the federal government budget will need to be funded by the state.

We will also need to look carefully at our state's preparedness for a catastrophe. Governor Shaheen is establishing the New Hampshire Commission on Preparedness and Security to review our policies and response to terrorist threats. The Commission will report back to her within 60 days. I will keep you informed.

Representative Beth Rodd and I sincerely care about our constituent services. We're here for you; if you have any concerns, please call Beth at 938-2692 or me at 428-3366.

## Parks & Recreation Update.

Grace Nelson is back with her Line Dancing on Monday nights, 7:00pm at Town Hall.


Popular DJ Brad Cote also returns Friday, October 5 at 7:00pm for a Kids' Dance at Town Hall. \$4.00 admission. Chaperones are needed; call Jane at 938-2570 if you can help.

There will be a "Paint a Picture in a Day" workshop on Saturday, October 6 at BACC at 10:00am. A \$40 fee includes all material. Call to register.

—Jane Lucas

## 55 Alive Driver Safety Course

The American Association of Retired Persons "55 Alive Driver Safety Program," a classroom driver improvement course designed for drivers 50 and over, will be presented at the Lake Sunapee Bank, 150 Main Street in New London. Sponsored by Lake Sunapee Bank, the 8-hour course will be held in two 4-hour sessions from 9:15am-1:15pm on Tuesday, October 9 and Wednesday, October 10. The cost is \$10 and there are no tests! To register, send a check made out to "AARP" to the instructor, Bob Vernon, 55 Pingree Rd., New London, NH 03257. For more information, call Bob at 526-6216. Space is limited.



**Fresh Meats & Produce**  
**Fresh Fish**  
**Fresh Deli Items**

New London 526-6951



**PIZZA CHEF**  
LUNCH SPECIALS ~ SUBS ~ PASTA ~ SALADS  
ITALIAN DINNERS ~ CALZONES

**"Delicious Pizza"**  
• Many New Items • Ice Cream • Beer & Wines

DINE IN OR CALL AHEAD FOR TAKE OUT SERVICE **938-2600**

Lunch & Dinner  
Open 7 Days 10 to 9

**Bradford Pizza Chef at the corner of Rte. 103 & Main ~ Bradford, NH**



**THE GOLDEN PINEAPPLE**

**20<sup>th</sup> Annual ANNIVERSARY SALE!**  
Sat. 9/29 through Columbus Day, 10/8  
**20% OFF Daily Specials!**

If an item has the designated color anywhere in it or on it, it is 20% off!

Sat. 9/29 Green • Sun. 9/30 Red, Pink  
Mon. 10/1 Brown • Tues. 10/2 Orange, Yellow  
Wed. 10/3 Blue, Purple • Thur. 10/4 Black  
Fri. 10/5 Green, Red • Sat. 10/6 Gold, Silver  
Sun. 10/7 White, Cream • Mon. 10/8 Blue.

Sat. 10/13 Boyds Bear Event  
*A Rainbow of Savings for all who come!*  
603 428 7982, phone orders welcomed  
National shipping for \$5.95

Sat. & Sun, 9:30-5:30 Jct. Rts. 202/9 & 127,  
Mon.-Fri. 9:30-7:00 at the blinker in Henniker  
Senior Days Mon. & Tues.

Open Columbus Day 9:30-5:30

\*Due to manufacturer's policy, Dept. 56, Byers' Choice, Ty & Boyds resin pieces cannot be part of any sale. Sale applies to in stock items only.



**BSC BOOKKEEPING SERVICES, LLC**

Managing your business or  
personal bookkeeping needs

Diane L. Gadoury ✓

P.O. Box 493

Bradford, NH 03221-0493

603-938-2482 • (FAX) 938-5764  
(e) D\_Gadoury@Bradford-SW.com

3 1/2 ✓ **Need travel  
arrangements?**

Now, more than ever, you need the  
expertise and support of a travel agency.



Serving New England Over 10 Years  
With Experienced World Travelers.

We find the best vacation and  
travel values for your money



**1-800-492-0257**

[www.adventurespirit.com](http://www.adventurespirit.com)

**NEW BRADFORD LISTING!**

Enjoy the mountain views from  
this older fixer-upper close to  
town! 3 BRs, nice 2-car garage,  
shed & sm. greenhouse on 1.4  
acres...offered at \$90,000 w/mo-  
tivated seller!

**Ann C. Hallahan Real Estate**

Route 103 / At Covered Bridge, Bradford  
938-2020 Web page: [heartofsunapee.com](http://heartofsunapee.com)  
E-Mail: [coveredbridge@conknet.com](mailto:coveredbridge@conknet.com)

## Bradford Area Community Center October Calendar

**Ongoing Activities:**

Mondays and Thursdays, Senior Luncheon, Noon  
Thursdays, Line Dancing, Community Room, 11:00am-noon  
Pre-school starting date October 3

**MONDAY, OCTOBER 1**

• Free hearing check with Cheryl Kenney of Sound Advice, Health Services  
Room, 10:30am-1:30pm

**TUESDAY, OCTOBER 2**

• Fuel Assistance, Conference Room, 9:00am-noon

**THURSDAY, OCTOBER 4**

• Girl Scouts, Community Room, 3:00-4:30pm  
• BACC Governance Board, Senior Room, 5:30pm

**SATURDAY, OCTOBER 6**

• Painting Class, Community Room, 10:00am-noon

**MONDAY, OCTOBER 8**

• Bridge Group, Senior Room, 1:30-4:00pm

**THURSDAY, OCTOBER 11**

• "Looking Forward", talk on reducing funeral costs, Senior Room, 11:00am

**SATURDAY, OCTOBER 13**

• Bradford Community Corporation, Senior Room, 7:30am  
• Senior Council, Senior Room, 1:00-3:00pm

**TUESDAY, OCTOBER 16**

• Fuel Assistance, Conference Room, 9:00am-noon  
• Merrimack County Council on Aging presentation, Community Room,  
10:30am  
• Flower Arranging, Community Room, 7:00pm

**THURSDAY, OCTOBER 18**

• Personal Touch Blood Pressure & Foot Care, Health Services Room, 12:30-  
2:00pm  
• Girl Scouts, Community Room, 3:00-4:30pm  
• BACC Governance Board, Senior Room, 5:30pm  
• Creating Lasting Family Connections, Session One, Counseling Room,  
5:45-8:30

**SATURDAY, OCTOBER 20**

• Health Topic Series with New London Hospital, Senior Room, 10:00am-  
noon

**MONDAY, OCTOBER 22**

• Massage Clinic, Health Services Room, 10:30am  
• Flu Shots, Health Services Room, 11:30am-1:30pm  
• Bridge Group, Senior Room, 1:30-4:00pm

**TUESDAY, OCTOBER 23**

• Flower Arranging, Community Room, 7:00pm

**THURSDAY, OCTOBER 25**

• Medicinal Therapy and Supplements talk by Pharmacist Steven G.  
Ottariano, 11:00am  
• Creating Lasting Family Connections, Session One continued, Counsel-  
ing Room, 5:45-8:30pm

**NO LINE DANCING TODAY**

For details or questions on any program call the office at 938-6228 or 938-2104.



## Bradford Community Center welcomes new Youth Coalition coordinator

Susan Cowan, formerly a science teacher at Kearsarge Middle School, replaces Heather Lane who started the program. The position is in the second year of a three-year Federal grant obtained by the Kearsarge School District to combat drugs and violence in the district.

Susan will continue the work begun during the first year and bring her own unique emphasis to the program which includes the after-school program, summer activity camp, substance abuse prevention classes for families, and a drug and alcohol prevention program. The after-school program will be for fourth to eighth-graders and will begin in early October.

Susan grew up in Macon, Georgia, graduated from Agnes Scott College in Atlanta, Georgia with a BA in psychology. She originally planned to go to medical school but then diverted to teaching. She received her MS in Environmental Education in 1996. She taught science at the Kearsarge Middle School in 1997 and stayed in that position until June, 2001. She loves to work with and for young people and is passionately devoted to her work. Although she enjoyed her work in the classroom, she found that it was important for her to work one-on-one with her students. She couldn't do that in the classroom environment because of the sheer number of students.

She brings an interest and excitement to this new position at the Community Center. Her work with middle school age youth is important. She said, "Middle School is a particularly risky time because seventh and eighth-graders start to define themselves as individuals and are offered tempting but unhealthy choices in life." In her spare time Susan enjoys rock climbing and tennis and just being outside in any outdoor endeavor. The Community Center is pleased to have Susan on board and we're looking forward to a very good year for the program.



—Phyllis Wilcox

## Medical Lectures: New London Hospital Update

On October 27, 2001, at the Bradford Area Community Center from 10:00am-noon, Maureen McNamara will present an update on New London Hospital as the fourth presentation in the series of collaborations with the community center.

This will be a forum to talk about the health care system in general and New London Hospital. Ms. McNamara will explain the system of care involved at the hospital and how the facility meets the needs of the community. The focus of the talk will be the need for information during this period of uncertainty related to the recent terrorist event. A question and answer period will follow this presentation. Please phone the Bradford Community Center for reservations/information at 938-6228.

## Computer assistance

Beverly Leo and Bill Hatt have volunteered to provide computer assistance at the Community Center. Bev is proficient in Microsoft Word, Quicken, Quickbooks, Excel, personal web site development, digital photography, and manipulation of photos on the computer. Bill is proficient with Internet use, including using browsers, finding and evaluating information on the Internet, Internet health sites, and e-mail including using e-mail, attachments and setting up mail lists.

If you would like to take advantage of computer help, please call Bev and Bill at 938-2996 or call the Community Center at 938-6228 between 9:00-12:00am. We will do classes if there is enough interest in any topic or individual tutoring when requested.

## Flower Arranging Workshops

Area florists will offer two new short courses in October and November at the Community Center. Vicki's Country Florist will give a demonstration of flower arranging on Tuesday, October 16. On Tuesday, October 23, Vicki will demonstrate and instruct attendees in making their own floral arrangements. On Thursdays, November 1 and 8, Marlene's Florist Shoppe will offer a chance for those interested in wreath making to develop their creativity. Both courses will start at 7:00pm and are free. There will be a charge for materials used. Please register at least ten days in advance by calling the BACC office at 938-6228.

## Substance Abuse Prevention Program

"Creating Lasting Family Connections" will be offered to Kearsarge area families again this fall. This award-winning substance abuse prevention program is for families of 6th-8th graders. Families will learn new and more effective ways to communicate as a family about tough issues like responsibility and refusal skills. This 13-week program is free and includes dinner and childcare for children 9 and under. Date: Thursdays starting Oct. 19, 2001. Time: 5:45-8:30 pm. Pre-registration required. Call 938-6228



### APPLESEED RESTAURANT

"COUNTRY DINING AT COUNTRY PRICES"

- Tuesday & Thursday Night Two 'Fers
- Roast Beef Buffet Wednesday Night
- Fish & Chips on Friday
- Prime Rib on Saturday
- Sunday Breakfast Buffet 9:00am-noon

Tuesday-Saturday 5:00-9:00pm, Sunday 9:00am-noon, 5:00-9:00pm

Route 103, Bradford, NH \* Member, Bradford Business Association \* 938-2100



**RESULTS Continued from page 1**

The town is required to perform annual monitoring and maintenance at the landfill, however, even if the property is not used. The NHDES reps noted that groundwater sampling and analysis, a system for gas venting and monitoring of emissions from decomposing waste, a landfill settlement survey with cap inspection, and general maintenance are all requirements which were invoked at the time the town acquired the property. They held off sending notice to the town, which has not complied with all of the requirements, pending completion of the site assessment. SHA estimated a cost of \$16,200 annually for the next five years, at which time a review of the data may permit a relaxation of the monitoring requirements. Costs could be reduced to half of this amount if the town performs some of the required work.

If the landfill portion of the site is not used at all, the first of the four options presented by the BEOC, a gated chain link fence surrounding the area, repairs to the cap and the installation of a passive landfill gas venting system would be required at an estimated cost of \$120,000.

Two other options would require the installation of an active gas ventilation system with an electric blower housed in a

small shed away from recreational areas. In the first of these two plans, the area could be used for limited recreational purposes, provided that the cap is not penetrated by digging holes. The area to the east could be filled in and leveled to the top of the cap to create a large level field useable for general events. The cost to implement this plan is estimated at \$105,000. More intense recreational use, such as permanently sited ball fields, could be made possible by installing a membrane material known as geotextile over the landfill, with additional fill on top. The membrane is added to reduce the potential for landfill settlement. Cost of this option would depend on the extent of the area to be regraded.

The fourth and most costly option considered was removal of the landfill. The volume of waste that would need to be removed is estimated to be 17,500 yards, and the cost is estimated to be between \$1.5 and \$1.9 million. Most of this cost is due to transport and dumping fees at remote approved sites in NH.

The BEOC will meet to review all of the information presented and to recommend a plan of action. A public form will be scheduled to review the options and recommendations. The next BEOC meeting will be held October 11th at 7pm at the BACC.

**Pumpkin Bash Square Dance**

The Bradford Country Squares will host a Plus Level Square Dance at the Bradford Town Hall on Saturday, October 20 from 8 - 10:30pm. The decorative theme will be "Pumpkin Bash," with the dance cued and called by Bob Grant. Admission is \$5 per person. For further information call Bob Trombley at 763-3044. Spectators are always welcome.

**Sutton Historical Society's Annual Meeting**

The Sutton Historical Society will hold its annual meeting at 2:00p.m. on Sunday, October 21 at the Pillsbury Memorial Town Hall in Sutton Mills. The speaker will be Chan Blodgett, who will entertain with "Tales of My Grandfather." After reports from the various committees, there will be door prizes, refreshments, and pies for sale.

**BRADFORD**



Charming 3 bedroom, 1 bath New England farmhouse near the center of town. Some finish work needed to complete large master bedroom & bath. Lots of original features. Screened porch, wood floors.

**\$148,000**

Call Cindy Michie  
(603) 464-4036



3 School Street  
Hillsborough, NH 03244-2100

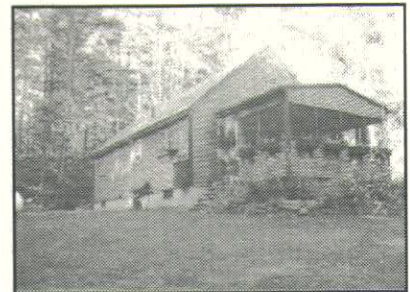
*1/2 pg.*  
**Century 21**  
Red Coat Realty  
**The Area's #1  
Homeseller!**  
every year since 1996

**Call our  
Bradford Agents**

**Cindy Michie  
938-5379**

**Sue-Ann Richardson-  
Siarto  
938-5237**

**SUTTON**



Lovely cape in Sutton on a half-acre lot. 3 bedrooms, 2 baths, beautiful screened porch. Walk to Blaisdell Lake. Move-in condition.

**\$139,900**

Call Sue-Anne  
Richardson-Siarto  
(603) 428-3828



10 Western Avenue, P.O Box 869  
Henniker, NH 03242



# Outside

by Ann Eldridge

For some reason, the fish in Lake Massasecum don't appear to be greatly concerned by snorkelers, huge, flailing, gurgling shapes floating near the surface. Large-mouth bass, perch, pickerel, golden shiners—I suppose they know such bumbling misfits can't possibly overtake them except by deceit of fishhook. The feathery waves of milfoil look complacent also, although in these shallow waters propeller turbulence leaves its mark like a jeep track through a summer field.

The lake has been known to be the home of variable milfoil, one of several species, since 1996. This water weed had been a native of Maryland and further south where it resides sedately. Until recently, say, the last several thousands of years, plants, insects, and other animals (with some wonderful exceptions) edged into new territory only slowly and carefully. They changed their forms and habits gradually and brought along their also-modified diseases and pests and predators or found new ones waiting. Migratory birds and other mobile creatures, and sometimes weather calamities, sped up the process occasionally but it is the vast roving hordes of humans that have lately raced this global mixing. Most displaced life is probably dismayed and fails in its new surroundings, but as with the case of milfoil, sometimes the new location works out quite well.

In New England, variable milfoil is experienced as a problem. With nothing to keep it in check, it can out-compete a pond or lake's customary variety of vegetation. With a toe hold on the bottom, it grows upward toward the light and can do this to a depth of about 15 feet, which, in the case of Lake Massasecum, can cover a great deal of aqua real-estate. Upon reaching the surface, it casually spreads, blocking sunlight to anything else requiring photosynthesis. It can lengthen one inch on a sunny day, which easily puts it in the same league as the zucchini. Milfoil is not fun to swim in or for boating. Fish don't eat it and, when the infestation is extreme, fish can find little left to eat at all.

This is a very versatile plant, possibly having crossbred with other milfoil to give it a cold-hardiness. It is not demanding in its soil requirements and its reproduction habits are quite liberal. Milfoil can and does flower like a "normal" plant but it is

SCLEROLEPSIS (NOT HARMFUL)



VARIABLE milfoil

more likely to spread by root runners. Its most successful method of procreation is by what is charmingly known as "auto-fragmentation", intentionally breaking itself up on the slightest excuse, as with


proximity to boats and swimmers. It can stick to a boat, trailer or other water equipment and there feign death, only to revive somewhere else with a drink of water.


More than 40 lakes and ponds in NH are now affected by this plant. The dedicated work of a small number of shoreline owners and concerned residents has so far confined the variable milfoil of Lake Massasecum to the north end of the lake. The State has assisted with some of the \$150,000 it collects annually from boat registration fees specifically for this purpose. Poison has been tried, divers hired, harvesting machines launched, boat landings monitored.

Left entirely on its own with no stronger competition or intervention, milfoil could eventually ring a lake. The ring would extend out as far into the lake as the plant is viable. Viewed from above you would see the blue of open water and a flat monochrome green floating layer surrounding. All other emergent water plants, including Sclerolepsis, water shield, pickerel weed, lily pads, and pipewort would be absent. Time would pass as it does and eventually, perhaps after thousands of years, the slow build up of milfoil upon aging milfoil would create a kind of peat along the shore. Layers of organic sediment would cover the once-sandy bottom and begin to fill the pond. Different plants would begin to colonize, other animals would thrive. The open gap of water would eventually close. A new form of wetland would exist. Waterfront homes would no longer claim water frontage. Their taxes would drop, assuming that taxes still exist...

Sometimes when the present tense is too difficult to imagine, there's some temporary relief in imagining the greater spans of time, past and future.

 **McPuter**  
 Mike Pugliese—Owner/Technician  
 Located in the R.L. Dodge Building  
 102 E. Main St., Bradford, NH  
 mpugliese@conknet.com  
**(603) 938-2701**  
 Guaranteed Computer Sales & Service  
 Repairs & Upgrades Our Specialty!

 **FOXCHASE**  
**MAN VS. MACHINE**  
 While we *do* have a fax and a computer, we have *no* answering machines or voice mail. A person will answer your call.  
*Foxchase, Assisted Living*  
 Rt. 114, P.O. Box 620  
 South Sutton, NH 03273  
**(603) 938-5111**  
 www.sutton-nh.com

**LAND**  
**Wonderful 5.6+/- acre lot** with a brook in a subdivision where land is only part of what you get. Convenient, private, quiet, yet close to everything! Southgate subdivision in Newbury, NH has it all! Easy highway access for commuting and a neighborhood you want to call home. Bradford and Newbury offer a community to be part of, not just a location you are from. Call today. Only.....\$35,000  
**STEWART AGENCY**  
 Main Street, Bradford  
**938-2255 or 938-2256** 





# October Calendar

## MONDAY, OCTOBER 1

Bradford Cemetery Commission, Town Hall, 10:00am, call 938-5386 for more information

Selectmen's meeting, Town Hall, 5:00pm

## TUESDAY, OCTOBER 2

ZBA, Town Hall, 7:00pm - call 938-5386 for information

KRMS Open House, 6th grade, 7:00-8:30pm

Bradford Fish and Game Club, Gillingham Drive, 7:30pm

## WEDNESDAY, OCTOBER 3

Library Trustees, BML, 7:00pm

## THURSDAY, OCTOBER 4

BACC Governance Board, BACC, 5:30pm

## SATURDAY, OCTOBER 6

"Train of Hope" Red Cross Benefit bake sale, Newbury Train Station Caboose, 11:00am-5:00pm

## MONDAY, OCTOBER 8

Selectmen's meeting, Town Hall, 5:00pm

## TUESDAY, OCTOBER 9

BWC Executive Board Meeting, BACC, 9:30am

BWC Crafts Workshop (following Executive Meeting), Mt. Lake Lodge, 10:30am (Please bring lunch)

Planning Board, Town Hall, 7:00pm

KRMS PTO meeting, 7:00pm

## WEDNESDAY, OCTOBER 10

Parks and Recreation, BACC, 7:00pm

## THURSDAY, OCTOBER 11

BEOC meeting, BACC, 7:00pm

KRSD School Board, KRHS, 7:00pm

## SATURDAY, OCTOBER 13

Bradford Community Corporation, BACC, 7:30am

## MONDAY, OCTOBER 15

Selectmen's meeting, Town Hall, 5:00pm

BBA Meeting, Church Vestry, 7:00pm

## TUESDAY, OCTOBER 16

BWC meeting, Baptist Church Vestry, 1:00pm

Conservation Commission, BACC, 7:30pm

KRSD District-wide Health Screening

## WEDNESDAY, OCTOBER 17

Library Trustees, BML, 7:00pm

Country Capitalist meeting, call 938-2787 for details

Road Committee, Town Hall, 7:00pm

Friends of the Library, BML, 7:00pm

## THURSDAY, OCTOBER 18

BACC Governance Board, BACC, 5:30pm

## MONDAY, OCTOBER 22

Selectmen's meeting, Town Hall, 5:00pm

## TUESDAY, OCTOBER 23

BWC Crafts Workshop, Mt. Lake Lodge, 7:00pm

Planning Board, Town Hall, 7:00pm

## WEDNESDAY, OCTOBER 24

Bradford Historical Society annual meeting, Old Post Office, 7:30pm

## THURSDAY, OCTOBER 25

KRSD School Board, KRHS, 7:00pm

## MONDAY, OCTOBER 29

Selectmen's meeting, Town Hall, 5:00pm

# Classifieds

WANTED. Someone to plow our long driveway on Pleasant View Road. Level, no slope. Call Bob at 938-6362.

FOR SALE. 21.2 cubic foot Westinghouse upright freezer. Excellent condition. \$250. Call Judy or Kevin at 938-5958 or 428-7621.

FOR SALE. Kitchen Cabinets & Dishwasher. KraftMaid Almond Euro 8 Base/17 ft. and 5 Wall/14 ft. \$250 for cabinets, \$50 for DW. Free local delivery. 938-2868.

MOVING SALE: Sat., Sun. - Oct. 13-14, 1-6pm. Everything from antique furniture, appliances, innersprings to orientalia, books/records, china/glass, semi-precious jewellery, tools, on & on. 707 West Road. 938-5182 for directions (lv. msg.).

FREE: Large satellite antenna plus receiver. Also 150-200 gals. fuel oil. Take them away. 938-5182.

WANTED. Youth Room at BACC needs donated furniture. We need clean, vinyl or leather upholstered, comfortable furniture in good condition. Please contact Susan Cowan at 938-6228 if you would like to donate.

FOR SALE. 3 cushion couch, good condition. 78 inches, \$95 or best offer 938-2057

FOR SALE. Franklin Stove \$200 938-5169.

FOR SALE. 1992 Mitsubishi Eclipse, fully equipped, \$500. 1993 Chrysler LeBaron, fully equipped, \$2500. 938-2190.

WANTED. Driver to help me do errands on Wednesdays. 938-2659.

FOR SALE. Designer baby girl's clothing, newborn to 12 months old, \$2-5. Newly upholstered wing back chair, beige and brown pattern, \$65, 938-2965.

To place a FREE classified ad of 40 words or less, please call Carey Rodd at 938-2692 or email [bradfordbridge@conknet.com](mailto:bradfordbridge@conknet.com).

## Bradford Bridge

**DEADLINE** for the November issue is October 20. See page 2 for more info.

Thistle Spinners, Every Monday, Thistle and Shamrock Inn, 1:00-3:00pm

Bradford Historical Society, open most Saturdays, Old Post Office, 1:30-3:00pm or by appointment, call 938-5386

To list events for the November Calendar, please call Betty Hague at 938-2722 or e-mail [bradfordbridge@conknet.com](mailto:bradfordbridge@conknet.com) before October 20.