



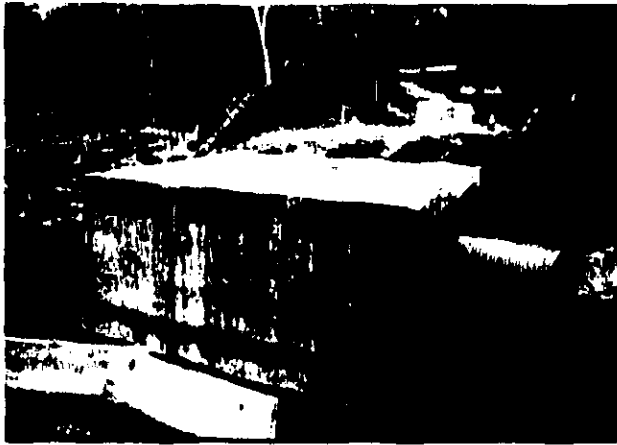
THE BRADFORD BRIDGE

PROJECT

The Police Explorers
See page 14

Volume 8, Number 12; Issue 90

December 1998



West Branch Brook Bridge in progress. This pre-cast rigid frame structure, shown as it was placed on November 19, will provide a 20 foot wide channel with a 22 foot roadway width. Completion is anticipated by mid December.

KRES Mourns Loss of Beverly McIntire

On November 18, the school community at Kearsarge Regional Elementary School at Bradford was stunned by the loss of a colleague, teacher and friend, Beverly McIntire, "Mrs. Mac," as she was affectionately called by children and staff, died unexpectedly as a result of a stroke. She was 59 years old and was in her eleventh year of teaching at Bradford. Prior to teaching in Bradford, she taught in New London for seven years.

In a letter to parents informing them of McIntire's death, Principal Scott Bouranis wrote, "Mrs. Mac" was able to bring out the best in the children she worked with. She was always encouraging children to do their best. Children that worked with her said that she was able to make them feel smart even if they made a mistake.

"Bev had a kind and quiet presence at the school and her loss is felt by everyone that had contact with her. She had a playful nature and loved puppets, reading, and the outdoors. Bev also loved her cats and I recently chided her about keeping a cat that bit her in the leg. I told her she shouldn't keep a cat that would bite its owner. I, not being a "cat person," wouldn't think of keeping such an animal. However, Bev would never get rid of the cat. The cat had a good side and Bev was able to see it. She was always able to see the positive side, no matter what it was."

The school staff helped the children begin to work through their grief by talking, drawing and writing. Counselors from other schools were on hand to assist the Bradford staff with this.

Parents were encouraged to understand that for some children the grieving process takes a while. Extra hugs and quiet support, especially for children who worked closely with Mrs. Mac, were suggested. The staff invited parents to contact the school if they have ongoing concerns.

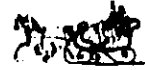
The staff and the school community are discussing ways to honor and remember Beverly McIntire.

Library Expansion Plans Move Ahead

On October 27 library trustees met with the Planning Board at a public hearing to formally present the plans for the library on-site expansion. The meeting was well attended by library supporters, abutters and other townspeople, many of whom expressed support for the project. Planning Board chairman Perry Teele thanked the trustees for a thorough and comprehensive presentation.

The trustees are now in the process of interviewing construction managers for the expansion project and a final decision will be made in the next few weeks.

LIBRARY Continued on page 17



Christmas in the Country

Capture the warmth this holiday season as Bradford kicks off this year's celebration with their annual "Christmas in the Country". Starting November 27 and ending on December 24, step back in time as you relive a true country Christmas.

Festivities include the lighting of the Town's Christmas tree and an old fashioned "Christmas Stroll and Caroling" down Main Street on December 5, along with the traditional "Hanging of the Greens." There will be craft fairs, lots to eat, and of course jolly old Saint Nick will be available to hear your Christmas wishes. Hear the sound of jingling bells as the horse drawn wagon clip-clops over the covered bridge and along the streets of Bradford. You don't want to miss the "Historic Homes and Inns Tour" and a special holiday supper at a local Inn. Festivities end on Christmas Eve with a children's pageant held in the historic Bradford Center Meeting House and later that evening a traditional Candlelight Service at the First Baptist Church.

See page 19 for a detailed calendar of events.



Newly elected Bradford Representatives: *Bernie Lamach* greets *Beth Rodd* in front of the Bradford Town Hall as he begins his first term as Merrimack County Commissioner and she takes the seat in the Legislature representing Bradford and Henniker that Lamach held for the past two terms.

Living in Bradford

**New Winter Hours
at the
Transfer Station
start December 2**

**9:00am-4:00pm
Wednesday,
Saturday & Sunday**

Obituaries

BEVERLY A. MCINTIRE

WEST SPRINGFIELD - Beverly A. McIntire, 59, died Wednesday, November 18 at the Dartmouth-Hitchcock Medical Center, Lebanon.

She was born in Lebanon, the daughter of Everett and Evelyn (Cote) Reney. She had lived in West Springfield for the past 21 years.

She attended Grantham School, graduated from Towle High School, Newport, in 1957, and earned a bachelor's degree from the University of New Hampshire, Durham in 1962.

She had been a teacher in the Kearsarge Regional School District for the past 17 years, and had been a chapter one reading teacher in Bradford for the past 10 years.

She enjoyed gardening, kayaking, hiking, snowshoeing, cross country skiing and reading.

In addition to her parents of Grantham, she is survived by her husband of 34 years, Vernon McIntire of West Springfield; a son, Todd McIntire of Newbury; a daughter, Tara McIntire of West Springfield; a grandson; and several aunts, uncles and cousins.

Memorial donations may be made to the Upper Valley Humane Society, HC 63, Box 52A, Lebanon 03766 or to the Society for the Protection of New Hampshire Forests, 54 Portsmouth St., Concord 03301.

JEANNINE L. FLEMING

Jeannine L. Fleming, 64, died Wednesday, November 11 after a long illness.

She was born in Providence, RI, the daughter of the late George and Mary (Coguzzo) Tanish.

She was a graduate of Malden, MA High School and an Army WAC stationed in Boston.

She was a long time resident of Malden and Melrose, MA, moving to Bradford in 1980.

In 1965, she became involved with the New England Home for Little Wanderers as a foster parent. She took in more than 150 babies, teenagers and unwed mothers, eventually becoming a specialized foster parent.

She worked with the New England Home and Dr. Arnold Miller of the Language Cognitive and Development Center, and was instrumental in the opening of The Language Cognitive and Development Center for Autistic Children in Boston.

She was a member of Silver Hill Vesta Chapter No. 49 Order of the Eastern Star in Bradford.

She enjoyed knitting, crafts, attending craft fairs and making items with the South Newbury Union Church Craft Group.

She was predeceased by a son, John Fleming.

She is survived by her husband, Henry Fleming Sr. of Bradford; five children, Henry Fleming Jr. of Hinsdale, Gene Fleming of Melrose, MA, Marijo Varney of Keene; and Kari Fleming and Melanie Fleming both of Concord; seven grandchildren; a brother, Ben Tanish of Port Rich, Fla.; and several nieces and nephews.

Memorial donations may be made to the First Free Will Baptist Church, P.O. Box 51 North Sutton 03260 or to Lake Sunapee Region Visiting Nurses Association and Hospice, P.O. Box 2209 New London 03257.

DONALD A. AINSIE

Donald Arthur Ainslie, 64, of Route 114, Bradford, died Sunday at Hospice House in Concord. The son of James W. and Clare (French) Ainslie, he was born in Boston on September 1, 1934. He was a 1952 graduate of Hyde Park (MA) High School and a 1957 graduate of Rensselaer Polytechnic Institute in Troy, New York. He worked for engineering firms in Connecticut, Massachusetts and New Hampshire. He was a member and

past master of St. Peter's Lodge No. 31, F.& A.M. He was a partner for six years with the Stewart Agency. The Lake Sunapee Board of Realtors chose him as Realtor of the Year in 1977.

He is survived by his wife of 27 years, Margaret (Keenan) Ainslie, and a son, Benjamin James, a student at Keene State College.

A graveside service will be held on Saturday, December 5 at 3:00pm at Sunny Plain Cemetery in Bradford. In lieu of flowers, donations may be made to Hospice House, P.O. Box 1797, Concord, New Hampshire 03302.

The Bradford Bridge
P.O. Box 463
Bradford, NH 03221
Telephone: 603-938-5029
FAX: 603-938-5702
Email: bradfordbridge@conknet.com

VOLUNTEER STAFF:

Lyn Betz, Editor & Publisher
Meg Fearnley, Assistant Editor
Denise Fairbank, Ad Manager/CFO
Andrew J. Pinard, Layout Consultant
Carey Radd, Classified Ad Manager
Betty Hague, Calendar Editor
Vern & Marion Hall, Subscriptions
Gene Schmidt, Advertising Sales
Mark Fairbank, Advertising Sales
John & Elinor Robie, Distribution
Milly Kittredge, Archivist

Subscription Information

For those wishing to receive the Bradford Bridge by mail, the annual subscription price is \$12 to cover the cost of mailing. To subscribe, please send a check to the address above.

Advertising

The Bradford Bridge is a free community newspaper supported by advertisers. To place an ad, call Denise Fairbank at 938-2973 or send a FAX to 938-5263. Ad deadline is Dec. 20.

Submissions

The Bradford Bridge is written by neighbors, for neighbors. Anyone is welcome to submit articles and/or photographs of interest to the community. Send articles or letters to Lyn Betz at the address, FAX number or e-mail address above by Dec. 20.

Seasons Greetings

from the

Candlelite Inn

5 Greenhouse Lane

938-5571

Gift Certificates Available

ASLPT receives \$50,000 gift

On November 12, a local conservation group announced the receipt of a \$50,000 gift for land protection in the Kearsarge-Sunapee area. The Aushon Sargent Land Preservation Trust (ASLPT), a non-profit group supported solely by donations and dedicated to preserving rural landscapes, acknowledged the gift from the Natalie P. Webster Foundation with deep gratitude. "We appreciate the Webster Trust's confidence in our ability to operate sound land protection projects and stewardship," said Debbie Stanley, executive director of the ASLPT. The \$50,000 gift is the largest donation from the Webster Trust, which has contributed to the ASLPT since 1990. The Board of Trustees of the ASLPT has earmarked the Webster gift for long-term stewardship of its protected properties, which this year reached 1,200 acres in 12 towns within the Kearsarge-Sunapee area.

The Webster Trust was founded by the estate of Natalie Peters Webster, an avid gardener and horticulturist. In addition to giving to conservation causes throughout New England and New York, the foundation transformed the Webster's estate in Islip, NY into a wildlife refuge. From waterfowl sanctuaries in Long Island to protection of wildlife habitat in New Hampshire, the Webster Trust gave generously to conservation before exhausting its resources this year.

*Glimpses selected from
Bradford Historical Society
materials by Milly Kittredge*

December 14, 1898, the thermometer registered 22° below at the printing office.

The skating which was so heartily enjoyed by all was of short duration on account of the snowstorm.

Hugh Corrigan shod 130 horses last week. Hall & Hadley have built several pairs of nice sleds lately.

C. E. Hadley has purchased the electric light plant of J. E. Marshall. He proposes to have the lights running soon.

Bradford's Natural Resources Inventory completed

The Bradford Conservation Commission has completed work on a Natural Resources Inventory for the town. This booklet covers a wide range of topics including geology, ground water, farm and forest land, and wildlife habitat. Maps of the aquifers, wetlands and hydric soils are enclosed along with recommendations and resource information. Copies have been distributed to the Town boards and offices to be used along with the Master Plan when considering long-range goals for the community. Copies have also been placed at the library.

KRIIS Winter Concert and Academic Exposition

Kearsarge Regional High School will be holding a Winter Concert and Academic Exposition, Tuesday evening, December 8, 1998. This spectacular event will showcase student work starting at 6:30pm in the KRIIS Gallery (a.k.a. the cafeteria). The public is invited to sample cuisine prepared before your eyes by the Culinary Arts Coop classes, watch Fairy Tale Theatre in French performed by French IV students, read student poetry, gaze at three dimensional cell models made by ninth grade Biology students, and more!

At 7:30pm, the KRIIS Band and Chorus will perform a winter concert in the auditorium. 154 students in Chorus will perform a Nigerian Christmas Carol, settings of the poem "I Shall Not Live In Rain" by Emily Dickenson, and a jazz arrangement of "Vincent" by Don MacLean. 84 Band members will perform a transcription of the New World Symphony by Dvorak and Christmas medleys.

The public is invited to attend. Come see the incredible work of this wonderful generation of talent. For more information call the high school and speak to Harriet Messer at 927-4261.

News from the Town Clerk and Tax Collector's Office

TOWNCLERK

September 23, Kaitlin Marie Gregg was born to Wendy and John Gregg in Lebanon.

October 25, Daniel Burnham and Laura McNeil were married in Henniker.

November 3, Amber Leigh Stamand was born to Heather Patterson and Kevin Stamand.

November 11, Jeannine Fleming died in Bradford.

TOWNCLERK/TAX COLLECTOR

Tax bills will start accruing interest at the rate of 12% starting December 12, 1998.

I have not received the final word as yet, but as of now I believe that new license plates will be issued starting the first of the year. There will be an additional cost of \$5.00 per registration to cover the cost of the new plates.


OFFICE HOURS: Monday 2:00-7:00pm; Tuesday, 8:00-5:00pm; Friday, 8:00-noon. Phone 938-2288, 938-2094.

The office will be closed on December 25, 1998 and January 1, 1999.

Marilyn and I want to wish you all the merriest of holiday seasons!


—Sue Pehrson



IN-TOWN LOCATION



BRADFORD. In-town location. 3 apartments, one 1-bedrm with loft, two 2-bedrm. Separate heat & electric, drilled well, 1,000 gal septic w/leach field. Must see.
REDUCED!! **\$110,000**

STEWART AGENCY

Main Street, Bradford
938-2255 or 938-2256 

 <p>Marlene's His & Her Salon Specials Wednesday Only Perms—\$35 Haircuts—\$6 • Children—\$4 Gift Certificates Available</p>	 <p>Marlene's Florist Shoppe Wreaths, Christmas Plants Stocking Stuffers Balloons • Gift Certificates Wire Service Available</p>
<p>Wed. 7am to 7pm • Thu., Fri., Sat. 7am to 5pm 938-2530 • Rte 114, Henniker Road Next to Lumber Barn</p>	

Letters

To the editor:

The Bradford Rescue Squad wants to thank all of our neighbors who have responded to the squad fundraising letter that was recently sent out. The notes that accompanied some of the contributions made us feel especially good about helping our friends and neighbors.

If you want to join us as an Emergency Medical Technician, there will be a Basic EMT Course held at New London Hospital beginning on January 18, 1999. The classes will meet on Monday and Thursday evenings with some Saturdays. For more information, please contact Training Officer Felicia Starr at 938-5212.

Dick Vitale

To the editor:

At our 1998 Town Meeting, I recommended we not vote to locate the new Library on the Marshall property because other activities were still underway which had a bearing on the decision. One was an application for a grant to convert the Central School into a Community Center. The other was a proposal for Plan NH to provide a highly focused evaluation and suggestions for revitalizing our Village Center. Our Town subsequently received both awards.

The Plan NH report offered three suggestions for the location of the new library, all on East Main; including the Town-owned Marshall property. This placement, close to the Community Center, reinforced the Plan NH team's concept of "bracketing" the retail area on Main with public facilities.

Bradford's voters face an important decision at the next Town Meeting...to proceed with the plan offered by the Trustees to expand the library on the current site...or not. The Library Trustees and their supporting organizations have done an outstanding job of fundraising and evolving building plans. Nevertheless,

Bradford's voters should have the opportunity to select the recommended Plan NH location as a better alternative. If the current site is accepted, our Town will be locked into a location that has been judged unsuitable by three past facilities/library committees.

I recommend that Bradford's voters evaluate the Library location decision from a "what's best for Bradford's future" viewpoint. Building the new library on the front of the Marshall property on East Main is better for Bradford than expanding on the current site. It supports the Plan NH team's revitalization suggestions, while offering expansion potential. Space is available for parking and handicapped access. A septic system and a quality water source can be incorporated into the new Library's site plan. Some added cost and time may be necessary, but the site has exceptional merit, as the Trustees themselves concluded earlier this year. The Town owns the Marshall property. Building the new library on that property would significantly contribute to both the revitalization and the appearance of our Main Street. The "old" Library could be put to marvelous use by our Historical Society and, should we ever get to that point, the new library would become THE landmark at the entryway to the Bradford Green. We need a larger library, but it is not too late to reconsider and place it where it can best serve Bradford's needs today, and in the future.

Donald C. Johnsen

To the editor:

Nearly three years ago portions of West Road were torn up with the explanation that repaving would occur during succeeding months. The old paved road was not that bad and could have lasted a while longer. More to the point, the torn up section has been left in a condition far worse than any passable dirt roads in town. And really, communication from the town to taxpayers as the years drift by has been nil.

We have witnessed our taxes rise and not many services are provided to outlying areas. We see our cars and tires damaged from jagged rocks and slabs from the old blacktop. We see property values way down. We have billows of dust coating entryways and forcing windows closed in summer. We have spent hours picking up and disposing of sharp stones in the road, to protect everyone's tires, only to have them soon return as the next town truck comes through to scrape. To what purpose? And why are speed limits for a normal paved town road kept in force? Now that a portion of the road HAS been repaved, we don't stand a chance from speeders.

Can't the unpaved section be maintained at a level equal to that of other dirt roads in Bradford? Can't appropriate warning signs to speeding motorists be posted?

We have been patient (a necessary Bradford attribute). Recently with conditions deteriorating further, polite protests have been rejected (none too politely). The town appears helpless—and totally broke. Why? Is there something here that we are not hearing about? We believe some sincerity—plus forthright action—is long overdue.

Hugh Keays, Gretchen Schuyler, Susan Townsend, R. James Allen, Joe & Faye Torro

To the editor:

As I prepare to begin this term as your State Representative in the New Hampshire Legislature, I am grateful for your confidence and trust in electing me to this position. This has been an educational experience thus far and one that will require constant analysis and reflection as we meet the challenges ahead.

Please join Barbara French and myself in celebrating our election victory with a reception in your honor on Sunday, December 6 from 4:30-6:00pm at the Congregational Church in Henniker.

Bring me your ideas, opinions and concerns. With your support, I will represent our best common interests in Concord. This is an exciting era in New Hampshire State politics. Let's mold a future that we can all be proud of.

*Beth Rodd, Representative Elect
District 3, Bradford/Henniker*

Letters to the editor should be no more than 400 words and may be edited for clarity and content. All letters must be signed and include a telephone num-

Carpet ♦ Vinyl ♦ Ceramic Tile ♦ Hardwood ♦ Area Rugs

NEW LONDON ♦ FLOORCRAFT

and Creative Kitchens

Carl & Gail Olson
Route 11, Wilnot

828-2800
800-870-4646



Left to right: Dick MacLeod, Bradford, NH; Roland Steiner, Louisville, KY; Marian Glanz, Texas.

Hurricane Georges

On September 30, I was called by the Red Cross in Concord, NH to be prepared to leave for Mobile, Alabama to assist in the wake of Hurricane Georges. I did damage assessment, family services and "hot-shotting" in Mobile, Bayou la Batre and Dauphin Island. These towns are located at the southernmost tip of Alabama on the Gulf of Mexico.

Bayou la Batre, a shrimp-fishing town, is also the location where the movie "Forrest Gump" was filmed. Hundreds of shrimp boats were damaged. The shrimp business will be affected for years.

Dauphin Island, located in the Gulf, is about ten miles long and three miles wide. This island was devastated because the highest point of land is only about ten feet above sea level. The waves over Dauphin Island were 27 to 35 feet high—wiping out many homes. All told, in this area over 4,000 homes were damaged, with over 200 destroyed.

People from Alaska to New Brunswick, Canada helped the areas hit by Hurricane Georges. When we were sent out on assignments for damage assessment, we were told to watch out for snakes, alligators, armadillos and fire ants. One of the people doing damage assessment found an alligator under a car. People in the south seem to take snakes and such as a part of life.

One lady wouldn't let me into her house without first going in with a gun in hand. She had already shot 12 water moccasins and was looking for more.

The southern drawl was hard for me to understand and it was equally hard for them to understand a "New Hampsha" boy. About thirty percent of the population is from Asian countries, which sometimes made communication difficult from both sides.

I am the local Red Cross Representative for Bradford and ten surrounding towns, called to fires, flooding, etc. I am also on the Governor's Council of Emergency Management.

—Dick MacLeod

Rosewood Open House Dec. 10

See the Rosewood Country Inn in all its holiday splendor on Thursday, December 10 at their seventh annual *Candlelight Christmas Open House* from 6:00–8:00pm. Holiday desserts and tea will be served. Each admission includes a chance to win the Inn's *Intimate Escape* package that includes an overnight stay in one of the Inn's new luxury suites with a fireplace and jacuzzi, a chilled bottle of champagne, a fresh floral arrangement from Vicki's Country Florist and three-course "candlelight and crystal" breakfast. Drawing will be held that evening. Proceeds from the \$5 admission benefit the Bradford Business Association *Christmas in the Country* fund.

Epsom Elderly Housing accepting applications

The Housing Program of the Community Action Program of Belknap-Merrimack Counties, Inc is now accepting referrals for applications in anticipation of the early spring opening of "Meadow Brook", Epsom Elderly Housing, Inc., 464 Suncook Valley Highway, Epsom, NH

A HUD Section 202 project, the development consists of 50 one bedroom units, constructed according to Section 504 regulations, with three units designed specifically for wheelchair users.

Each unit contains a living/dining room, one bedroom, kitchen with stove and refrigerator, and a full bath with safety features. Laundry facilities, a community room and parking are provided on site, and the development is convenient to community services.

Tenant rents will not exceed 30% of adjusted monthly income, and includes all utilities except telephone and cable television.

To qualify for this housing, applicants must satisfy the following HUD criteria: Head of household or spouse must be at least 62 years of age and annual income from all sources cannot exceed \$17,000 for a one person household and \$19,450 for a two person household.

Anyone meeting these criteria who is interested in this housing should contact the Housing Program, Community Action Program, Belknap-Merrimack Counties, Inc., P.O. Box 1016, Concord, New Hampshire 03302-1016; VOICE: (603) 225-3295, TDD: 1-800-735-2964.

**We are now in
MULTIPLE LISTING
(MLS)**

**So that your exclusive
listing is now before
every participating
office in the state, as
well as the Internet.**

E. Harris Realty

Route 114 Bus. 938-5141
Bradford Res. 456-3542

ALICE VICTORIA Garden Art and Design

Unique and Beautiful Treasures from the Garden

Marble Cat Sculptures & Bas Relief by Brian Davis

Classic Garden Furniture • Garden Statuary • Japanese Lanterns • Bird Baths

Planters • Urns • Antiques • Prints • Terra Cotta Bird Houses

Nature Photography • Classic Christmas Greens • Natural Fibres

Christmas Plants from the Greenhouse

Christmas Showroom at Blake's Garden Center

Jones Road, Bradford, NH Tuesday—Sunday, 10am–6pm 938-2386



Church News From Lynne E. Hubley

The American Baptist Women's Ministries will hold their December meeting on Tuesday, December 1 at 7:00pm. "Preparing for Advent" is the title of the program. There will be a devotion on the meaning of "Love Gift" and the "Love Gift" offering will be received. The ladies will also be making stockings with a special message inside to be given to our children at the Christmas Eve Service. A Yankee swap will end the evening.

Children of all ages are invited to "Make and Take Crafts" at the Church vestry on Saturday, December 5 from 10:00am-noon. Hot chocolate and donut holes will be served and the children will be able to make Christmas decorations, decorate cookies, make candies, Christmas swags, snowflakes, and enjoy a fun morning. Children in grades 4 and under are asked to be accompanied by an adult. There is no charge for this activity.

Come and enjoy a "Christmas in the Country Ham and Bean Supper" on Saturday, December 5 from 5:30-7:00pm. Cost is \$6 for adults and \$3 for children 12 and under.

After the Ham and Bean Supper, you won't want to miss a presentation entitled

"A Medieval Christmas Concert" by Cantalina Trio. Special guest Allan Treadwell, a tenor, will make an appearance. The concert will begin at 7:30pm. A free will offering will be taken.

On Sunday, December 6 from noon-4:00pm, our youth group (grades 7-12) will be selling Christmas trees and wreaths at the old school on East Main Street (future site of the Community Center). Proceeds will benefit the Community Center and the First Baptist Church Youth Group.

Odds Bodkin will delight us with a program entitled "Yuletide Tales" at the Church on Sunday, December 6 at 4:15pm (after the sale of the trees and wreaths). The cost is \$2.00 per person (maximum \$6.00 per family). Proceeds will benefit the Bradford Community Center.

The Women's Christian Guild will meet at the Church on Monday, December 14 at 10:00am. They will be wrapping Christmas gifts for a needy family in Bradford.

Our Men's Fellowship group will meet on Wednesday, December 16 at 7:30pm at the home of Clark Phillips for their monthly meeting.

The Youth Groups (grades 4-12) will go Christmas Caroling on Sunday, December 20 from 2:00-4:00pm to some homes in the area, and then come back to the Church for games and a Christmas party.

A traditional Christmas Eve Service will be held on Thursday, December 24 at 7:00pm.

The Marine Corps Reserves have placed a large "Toys for Tots" box in the narthex of the Church. The toys will be distributed to needy families in Bradford in conjunction with the Christmas food baskets. The toys must be new and unwrapped.

The Food Pantry will assemble Christmas food baskets on Saturday, December 19. If you would like to make a donation, please mail it to the First Baptist Church, P.O. Box 57, Bradford, NH 03221. Please make checks payable to the Community Food Pantry.

Area Senior Rally

The Senior Rally met on November 7 for another interesting meeting relating to senior issues. The meeting was held at Ann Hallahan's Real Estate.

Carol Conforti-Adams gave a brief overview of progress on the Community Center project and the services that will be offered when the center opens. Carol also described her position as Program Development Consultant. She encouraged Senior Rally participants to become involved by offering their ideas on what kind of activities they would like implemented for seniors at the Community Center.

Speakers for this meeting were attorneys Judith Fox Arsenaault and Chiaro Dolcino, from Arsenaault and Dolcino in Concord. The focus of their practice is elder law. They spoke about wills, trusts, different types of Powers of Attorney, pre-burial arrangements or contracts, advance directives and administering an estate, as well as answering questions.

At the Sept. 12 meeting we had speakers from area police departments. The officers were from Newbury, Sutton, Warner and Bradford. They spoke on "Safety, In and Out of the Home."

We have been very fortunate to have so many excellent speakers at these meetings. All area seniors are welcome and encouraged to attend.

On Dec. 3, there will be a planning meeting to discuss the continuation of the Senior Rally and the arrangement of future speakers. The meeting will be held at Ann Hallahan's Real Estate in Bradford, at 1:00pm.

Senior Rally participants would like to thank Ann Hallahan for providing meeting space, Bowie's Market for the excellent refreshments and the First Baptist Church for the loan of chairs.

The next Senior Rally will take place on Jan. 16. Look for notice of the location, which will be announced at a later date.

—Betty Perron

All they want for the Holidays is at The Golden Pineapple

Beautiful pottery
Boyd's Bears
Department 56 Villagers
Byers' Choice Carolers
Cat's Meow
Welcome slates
Woodstock Chimes
Lang & Wise figurines
Name mugs
Yankee Candles
Ty products...

A gift from The Golden Pineapple is a reflection of your fine taste.

THE GOLDEN PINEAPPLE Gift Shop 428-7982

Weekdays 9:30-8:00pm

Weekends 9:30-5:30pm

VISA, MC, Discover, AmEx

Shipping & Gift Wrap Service

<http://www.conknet.com/goldenpineapple>

Jct. Rts. 202/9 & 127
At the blinker beside the
highway in Henniker

NEW The Gathering Place A Spiritual Shop

OPEN Tues 12-4, Wed-Sat 12-6pm 938-5790

Books • Music • Candles • Dream Pillows
Baskets • Honey • Herbal Teas • Crystals
Native American Items • Kripalu Yoga
Reiki • Lending Library • 1st Wednesdays

1st Wed Dec 2, 7-9pm

UNLEASH YOUR INNER HEALER

Thurs Dec 3

OPEN HOUSE 5-8pm

128 East Main St Bradford (behind Bowie's Market)





BOOK REVIEW

by Pauline Dishmon

YOU WOULDN'T BELIEVE WHAT MY GRANDCHILD DID

Lois Wyse
Simon & Schuster
New York, 1994

Lois Wyse, grandmother to nine children and contributing editor to *Good Housekeeping*, reminds readers that modern day grandparents are no longer thought to be roly-polies wearing round glasses and square shoes. Today's grandmothers don't all bake cakes from scratch or sit around knitting in rocking chairs. To the contrary, many present-day grandparents travel to places like Disneyland, exercise and watch their diets, yet still "provide the soft edge to the hard rules mothers and fathers must enforce" while raising children. In this book, Wyse recalls experiences she and her husband have shared with their grandchildren and includes entertaining accounts from other grandparents.

Consider Megan who visits her grandparents in Florida every Christmas. The grandmother asks Megan, "What do you want for a Christmas gift? You can have anything you want." Megan's response was impossible. "Make sure it snows when I visit."

Four-year-old Richard visits a church with his grandfather who explains that the building is God's house. Awed by the grandeur of the nave, the boy shakes his head in wonder and whispers, "God sure must be a very tall man."

Another child wants Grandmother to play computer games. Grandmother apologizes, "I'm sorry. I don't know how to use a computer." The nine-year-old sighs, "Oh Grandma, didn't you go to the second grade?"

A fun book.

You Wouldn't Believe What My Grandchild Did is available at the Brown Memorial Library.



The cast of the November 7 Moon Mountain Arts production, *An Evening of Stories and Sketches of the Weird and Fantastic*. From left to right: standing, Carol Tonkin, Tillie Wheeler, Everett Kittredge, Jessica Fillmore, Geoffrey Douglas, Marcia Strout, Greg Johnson, and Francis Page. Kneeling, Vernon Hall and Perley Strout.

Bowie's Market

126 East Main Street, Bradford, NH
938-5533 • Fax 938-2609

OPEN 7 DAYS: Mon.-Thu. 5:30am-8:30pm
Fri. & Sat. 5:30am-9:00pm
Sundays 6:00am-8:00pm

December Specials:

Cheerios 15 oz.	\$2.29
Solid White Tuna Geisha 6 oz. in water	\$1.19
Fudge Brownie Mix Duncan Hines 21 oz.	\$1.29
Top Ramen Noodles Nissin 3 oz. Assorted	6/\$1.00
Microwave Popcorn Shurline 10.5 oz. Assorted	99¢
Poland Spring Water 1.5 liter	69¢
Ground Coffee Folgers 11.5-13 oz. Assorted (excludes decaf)	\$2.49
Jumbo Paper Towels Bounty 64 ct. Roll	99¢
Laundry Detergent Shurline 64 oz. Liquid	\$1.49
Kitten or Cat Chow Purina 18 oz.	\$1.29

Prices effective Dec. 7, 1998-Jan. 2, 1999

We reserve the right to limit quantities and to correct typographical errors.

We have a full line of Health & Beauty Products and Groceries—bakery, deli, meats, beer, wine, dairy, frozen foods, produce and more

BRADFORD'S ONLY FULL SERVICE MARKET

938-2315

40,000 BOOKS

Books by the Lake

Buying & Selling

Quality Used Books in Most Fields

Route 114 at Lake Massasecum

Wed-Sun 10:00-5:30

BEOC Update

The Bradford Economic Opportunities Committee reviewed the status of the top ten projects from the "What If's" list developed in 1997. Topping the list was the Bradford Green. A layout has been developed to provide residents with a more detailed concept of the Green's eventual appearance and uses. David Blake has proposed developing an ice skating rink in the near term because the one in Brown Shattuck Park needs additional work to become usable and has other disadvantages. Scott Kent, an engineer who works on such matters, is working with Dave and others to assess the site. A Bradford Green team was formed, with Dave Blake as the lead, to further define a multiyear plan for developing the Green. Gary Wall, Diane Gadoury and Scott Kent are team members. The prime goal is to evolve the Green with minimum expense and maximum town benefits over a period of years. An immediate aim is to have the concept available to support a warrant article at the March Town Meeting.

Leslie Nelson is the team leader for the Water & Sewer project. She is an engineer who works on similar projects in other towns. Presently, the team is gathering and evaluating information.

The Community Center project is now under the stewardship of the Bradford Community Corporation, which is supporting the Selectmen with fundraising, program development and oversight on the renovations. The BEOC's role is completed on this effort.

The Friendly Town Procedures Guide has been completed. It will be delivered to the Selectmen for introduction into the array of Bradford handouts given to prospective and existing businesses (as well as to residents in general). The guide provides a summary of the steps and procedures that must be followed to expand or develop existing or proposed structures or sites. It explains

Building Permit application procedures and where, how and when to schedule meetings with the Planning Board, Zoning Board and/or the Board of Selectmen.

The Marketing Bradford Guide, which describes our Town's characteristics and attractions, is in the final editing stage. This too will be turned over to the Selectmen's Office as a handout for prospective businesses (or others) interested in locating in Bradford.

Other projects on the top 10 list are in the information and feasibility stage. Leslie Nelson and Scott Kent are leading a preliminary feasibility assessment for a proposed Business Park at the 45-acre site which currently houses the Transfer Station. Diane Gadoury is looking into a source of funds for a detailed feasibility study.

The BEOC's activities expand as the details of individual projects are addressed. More help would be welcomed and we are seeking volunteers. Come and sit in. Meetings are held at the Town Hall on the second Thursday of every month at 7:00pm.

—Don Johnson



MMA Messiah Sing December 13

Continuing a Christmas time tradition, Moon Mountain Arts will present a sing-along Messiah at the First Baptist Church on Sunday afternoon, December 13, at 4:00pm Joseph Chapline, noted area organist, will direct and accompany the singing of Handel's famous work.

Although some scores will be available, people are encouraged to bring their own music. The sing-along is open to all levels of singers with the only criteria being a love of this marvelous music. For more information, call 938-2095.

—Debbie Lamach

NEW KEARSARGE CORPORATION

- REELS • PALLETS • BOXES •
- SPECIALTY WOOD PRODUCTS •

NKC Breezy Hill Road, Bradford

DUMONT'S BARBER SHOP

Wednesdays 8:00-6:00

Main Street Denis Dumont, Owner



From the kitchen of Lesley Marquis

CRANBERRY APRICOT COMPOTE:

- 1 cup dried apricots (about 6 oz.)
- two 12 oz. bags fresh frozen cranberries
- 1 cup water
- 1 cup sugar
- 3 large shallots

Quarter apricots and pick over cranberries. In a three-quart saucepan, bring water, sugar and apricots to a boil and simmer, stirring until sugar dissolves, about 5 minutes. Add cranberries and simmer until berries burst, about 5 minutes.

Finely chop shallots and stir into compote. Remove pan from heat and cool completely. Makes 4 cups.

CRANBERRY-WALNUT RELISH

- ¼ cup brandy
- 1 tsp. grated orange zest
- ¼ cup orange juice
- ¼ cup vinegar
- ¼ cup minced red onion
- ¼ tsp. mustard seed
- 1/8 tsp. salt
- 1/8 tsp. freshly cracked pepper
- 1 cup sugar
- 3 cups fresh cranberries
- ¾ cup chopped walnuts

In a medium saucepan, combine brandy, orange zest, orange juice, vinegar, onion, mustard seed, salt, and pepper. Bring to a boil over medium heat. Boil until liquid is reduced to ¼ cup.

Stir in sugar and cranberries. Continue to cook, stirring often until cranberries have popped, about 10 minutes.

Remove from heat and stir in the walnuts. Cool. Cover and refrigerate until serving time. Yields 2 ½ cups.

Wishing you a season filled with beautiful moments and cherished memories.

Lesley and Dick



Special Hours to 8:00pm on December 3!

Come by for FREE REFRESHMENTS and PRIZES.

Take advantage of the Final Days of our 25% off Sale.

Get your stocking stuffers now!

R.L. DODGE CO.
SINCE 1943
GENERAL STORE
Main St., Bradford, N.H. 03221
938-2258

Union Congregational Society News

There's an abundance of exciting things happening with the UCS here in Bradford. We had a great summer with two Worship Services, a grand wedding, and four public events at the Bradford Center Meeting House, two Lettvin Concerts, a Flea Market, and a Pig Roast, also with music. Thank you to the Lettvins and all volunteers who helped with these events.

We have two new Chairmen for our Board of Directors, Alma Clinton and Carey Rodd will share this position. A big thank you goes to Bob Blank and Howard Klein for being Chairmen of the Board for many years. They will remain on the board along with John Blitzer, Joan Lettvin and our two new Chairmen.

What are the exciting events? We had work sessions at the Meeting House two Sundays in November to remove the peeling paint on the ceiling. Bob Blank, Carey Rodd, Bliss Dayton, Greg Johnson and Conrad Szymkowiec did the work. Under this peeling top coat, they uncovered some interesting decorative patterns on the ceiling. How exciting! Our questions remain, when was this work done? Who did the painting? And, was there an artist involved?

The early records from the Meeting House were destroyed by fire at another location many years ago. We do have an accounting of time written by Ruth Moore and information provided by Julian Dodge. It appears that the inside of the Meeting House was painted in 1940 and 1941. So, the patterned work was probably done prior to 1940. If anyone has information about this work, please call Alma Clinton or Carey Rodd.

Our last event this year will be the Christmas Eve Service and Pageant, December 24 at 5:00pm. Don't forget to wear your warm clothing. Here's a chance to step back in time at Bradford Center on Christmas Eve. Please join us.

—Mary Keegan Dayton

BEHIND THE BOOKS An update from the Brown Memorial Library Trustees

The library display table at the November 3 election was a busy place as many people stopped by to view and discuss the expansion plans and buy raffle tickets. The 50/50 raffle winner was Valerie Cayer who won \$130 in cash. The winners of the Beanie Babies were R. Bean, Jean Kennedy and Randy Thomas. The Reese's Peanut Butter Cup raffle, sponsored by the Friends of the Library, was won by Beth Thompson. Special thanks to Jessica Grenier who donated all three brand-new Beanie Babies to help raise money for the library and to Carolyn Coolidge for donating the Reese's Peanut Butter Cups. Congratulations to all the winners and thanks to all who bought raffle tickets to help support the library expansion.

As part of Bradford's annual "Christmas in the Country" historic homes and buildings tour, an open house will be held at the library on December 13 from 1-4 pm. Our handsome fireplace will be lit for the first time in over 15 years, and we invite you to join us for holiday refreshments served by the fireside.

Be sure to check the library's website to see all the details about the expansion plans and the capital campaign. You can find it at www.conknet.com/~m_hunis/BML.

This month's questions and answers about the library expansion deal with a subject important to all of us—costs of running the expanded library:

How will the expanded space at the library impact the annual budget in terms of operating costs?

The trustees have investigated this topic with PSNH and several heating companies and the consensus is the maintenance/utility/janitorial budget increase for the expanded library will be approximately \$2,000 per year. Improvements to the present building will include added insulation, an interior air-lock foyer, a new energy-efficient heat-

ing system and energy-saving lighting and building materials, all of which will help keep utility costs to a minimum.

Will we have to pay increased salaries for the expanded library to be open more hours?

No. The expanded library has been carefully designed to run efficiently with the existing staff. Bradford now complies with State standards for library operational hours, which are based on population figures. There are no plans to add additional salaries or hours.

This month's book quote:

"I received the fundamentals of my education in school, but that was not enough. My real education, the superstructure, the details, the true architecture, I got out of the public library. For an impoverished child whose family could not afford to buy books, the library was the open door to wonder and achievement." —Isaac Asimov

Bradford Country Squares

The Bradford Country Squares will host a "Christmas Ball" Class square dance on Saturday, December 5 at the Bradford Town Hall from 8:00-10:30pm. Don Bachelder is the caller and Marilyn Rivenburg the cuer. Admission is \$4.00 per person. For more information call Virginia Johnson at 927-4956. Spectators welcome!

Lake Access



BRADFORD. This one is a must to see. Large rooms throughout. Four-plus bedrooms, 1 1/2 baths, Oil/FHW, Large 1.6 acres of mostly lawn. Great location with access to Lake Todd. **\$122,500.00**

ELLIOT HANSEN ASSOCIATES

"a real estate company"

10 Tracy Road

New London

763 9999 • hansen@kear.tds.net



APPLESEED RESTAURANT

Overlooking Lake Todd

Happy Holidays!

**Don't forget our Annual New Year's Eve dinner buffet
5pm-9pm**

Catering Available for the Holidays

Member, Bradford Business Association

938-2100

In the Spotlight: The Bradford Community Center Project

Building Update

The Bradford Community Building project is well under way and moving along at a good pace. Preliminary design has been completed. Some of the tasks accomplished during preliminary design included complete code review and resolution of code problems (such as a variance for the roof height from the State Fire Marshal), an environmental impact report and a new design which takes into account the PlanNH Charrette design recommendations.

The building design adds a new main entry at the back of the building so that the parking can be located behind the building. This parking location reflects a Plan NH recommendation to preserve the green space in front of buildings. The new entry will include a handicapped lift and a plaque to recognize those who contribute to the success of the building. In addition, the new design includes a deck at the level of the main floor that will act as direct fire egress for the kindergarten and also afford play space for the children.

Mehren Freeman Architects is now working on drawings and specifications for construction. Bruss Construction is reviewing all items for cost. The project is scheduled to be bid in the winter of 1999 and construction will start in the spring.

Fundraising Update

The \$260,000 grant is paying for 80% of the project renovation costs, and efforts to raise the additional \$75,000 are underway. The Bradford Community Corporation (non-profit organization) has received \$25,000 to date, with over \$10,000 in pledges for next year. If you would like to make a tax-deductible contribution before the end of this year, please send your check to the Bradford Community Corporation at P.O. Box 436. Your financial support is greatly appreciated. A general mailing requesting financial support is being planned for early 1999.

Who will use the Community Center?

In addition to building plans for the new Community Center, work is under way to set up programs, activities and a Community Center Governance Board. In order to receive the grant to renovate the building, Bradford made a commitment to the Office of State Planning to operate the building and provide programs and services to three target age groups: preschool/kindergarten, youth and senior citizens. The renovation of the building must provide space for programs to benefit these groups. In addition, the renovation must include office space for health and counseling services. The grant requires these health and counseling services to be offered once per week. Programs and activities at the center will be available for all members of the community regardless of income level.

Eight organizations have agreed to provide professional services at the Center. Child and Family Services of NH, Riverbend Parent-Child Centers, Lake Sunapee Visiting Nurse Association, New London Hospital, NH Adult Tutorial Program, Personal Touch Home Care, UNH Cooperative Extension Services, and Bradford/Newbury Kindergarten and Preschool will all make programs or services available to the community.

Many local groups have supported the renovation of this building for a Community Center and/or have agreed to work together to develop the Center. These include the Bradford Women's Club, Bradford Parks and Recreation, Bradford Business Association, Bradford Economic Opportunities Committee, Senior Rally, Bradford First Baptist Church, Bradford Community Corporation, Moon Mountain Arts, and the Bradford Board of Selectmen.

A sampler of programs that could be offered by our present service providers and volunteer groups included:

Adult programs: Lifestyle, exercise and nutrition courses, financial planning course,

couples communication, asthma self-care, women and self-defense classes, cooking classes, CPR/First Aid, parenting programs.

Children's Programs: Arts and crafts series, after school film series, babysitter training, science enrichment program, special youth events, summer recreation program, mentoring program.

Senior Programs: Weekly senior luncheon and lecture series, advance directives and living wills, defensive driving AARP course, arthritis self-care, arts and craft activities.

Health and Human Services: Immunization and flu shots, blood pressure clinic, cholesterol check, skin cancer check, well child clinic, dental fluoride program for preschoolers, vision and hearing screening, foot care clinic, individual and family counseling services, family resource center.

December Events

December 6: FUNDRAISERS

- Christmas Wreath and Tree sale, Community Center lawn, noon-4:00pm
- Odds Bodkin Christmas storytelling, \$2 per person or \$6 per family, Baptist Church, 4:15pm

December 9: FOCUS GROUPS

- Meetings to share detailed plans and to gather additional information from community members on needs and wishes for the building. These Focus Groups will occur at three separate times during the day to reach as many people as possible. The times will be 9:30am, 12:30pm and 7:30pm. If you are unable to attend one of these meetings but would like to participate, call Carol Conforti-Adams at 938-2562.

AutoCraft
Automotive Services & Sales






New! Computerized
4-wheel alignment—\$49.95

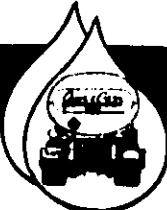
938-2623

State Inspections
24 Hr Road Service & Towing



Oyer & Coss
FUELS

**24 HOUR SELF SERVICE
GASOLINE & DIESEL PUMPS**



Serving the area's heating needs for more than 51 years

FUEL OILS & LPGAS/COMPLETE HEATING SERVICE

938-5335

Route 114, Bradford • Hall Ave., Henniker... 428-3333



**Conforti-Adams to
Coordinate Program
Development**

The Bradford Community Corporation has hired Carol Conforti-Adams as Program Development Coordinator of the Bradford Area Community Center. Conforti-Adams, an experienced consultant in community planning and grant writing, has been a key figure in the evolution of the Community Center project. She will be responsible for developing programs and a permanent Governance Board for the project, developing funding strategies to sustain the Center and promoting increased community involvement.

"A successful community center must involve community users in the development of the programs from the beginning," says Conforti-Adams, who views community involvement as a key to the Community Center's success. "After the first of the year, we will be bringing individuals from all segments of our community together to work on development that meets their needs and interests."

In addition to Conforti-Adams, a number of others are making crucial contributions to the project. Donna Lane, a professional grant administrator experienced in administering community development block grants was hired in September to assure compliance with regulatory requirements. After a review of proposals, Selectmen chose Barbara Freeman, a Newbury architect, as the project architect. Bruss Construction has contracted to provide construction management services. Numerous residents of Bradford and neighboring towns have contributed time and energy to development efforts. Area residents interested in any aspect of the Bradford Area Community Center are encouraged to contact Carol Conforti-Adams at 938-2563.

**Bradford Community
Corporation Update**

In July of this year a private, non-profit organization, the Bradford Community Corporation was established for the purpose of furthering the social, economic, educational, and cultural life of the community of Bradford. It has been granted tax-exempt status and is authorized to solicit gifts and grants in accord with its purpose.

The rationale for creating this organization is that the Town Government is limited in its capacity to raise and administer private funds for many worthwhile purposes. The idea of developing a private organization that can enter into private-public partnerships in order to achieve worthwhile goals was appealing. Furthermore, there are a number of foundations and public programs that will make grants only to such private non-profit organizations.

The immediate challenge that spurred the formation of the Corporation was the need to raise additional funds to complete the Bradford Community Center. The Corporation has begun raising funds from private donations and has been successful in obtaining a grant from the Samuel Hunt Foundation. While the board is working closely with the Board of Selectmen and with the Community Center governance committee, it is an independent entity.

Current board members include Joe Conway, Bliss Dayton, John Harris, Nancy Hibbard, Don Johnsen, Ev Kittredge, Mel Pfeifle, Seddon Savage, and Jon Steiner. Carol Conforti-Adams is serving as consultant to the board for program development and grants. Two working subcommittees have been formed: one, including Kittredge, Johnsen, and Conway, for coordination between the Selectmen, architect, and construction managers for the Community Center; the other, including Hibbard, Pfeifle, and Savage, for fund raising. The

interim officers are Harris, President; Johnsen, Vice President; Dayton, Treasurer; and Hibbard, Secretary. In December, permanent bylaws will be adopted and officers elected to serve in 1999.

Many non-profit corporations like this have been established across the country in recent years and have proved to be effective vehicles for mobilizing resources and overseeing their use for a wide range of community development activities. Many foundations and government programs have been encouraging the formation of such corporations and prefer to use them as agencies to which grants can be channeled. Creating vibrant private-public partnerships has enormous potential for community development that goes far beyond the capacity of town governments. Achieving this potential is the goal of the board of the Corporation.

Although the Community Center is the first project the Corporation has been involved with, it expects to work with other organizations to address many other needs of Bradford in the coming years. The Corporation will act as a body for the mobilization of resources and will channel them to organizations and bodies that have the capacity to implement worthy projects that will serve the community. Much can be done to enhance the social, economic, educational, and cultural life of this community through cooperation among the many organizations in Town—the Corporation intends to be an agency to further such partnerships.

—John Harris

Help Wanted

The Bradford Bridge depends on volunteers for submissions and production. If you would be interested in helping, we can put you to work!

Ad reps, proofreaders, photographers and reporters willing to attend meetings especially needed.

Call 938-5020 for more information.



**Fresh Meats
&
Produce
Fresh Fish
Fresh Deli Items**

New London 526-6951

**REACHING HANDS
THRIFT SHOP
and Garage Sales**



Respectable Items
at Reasonable Prices
Off Old Warner Road,
Bradford 938-2820

Proverbs
31:20
Great Weekly Specials
M,Tu,W by chance; Th,Fri,Sat 10-4

Also lamNet—Internet
Access & Marketing 938-2127

Alternative Health Workshop: Your Inner Healer

On Wednesday, December 2 the Alternative Health and Personal Growth Workshops will present the topic "Unleashing Your Inner Healer." Psychic Robert Swantuk helps us tap into our unlimited, universal power to heal ourselves and those around us. Learn visualization and breathwork of ancient medicine people and reveal your potential to heal.

The workshop will be held at The Gathering Place in its new location on East Main Street behind Bowie's Market, from 7:00-9:00pm, with a suggested \$5 donation at the door.

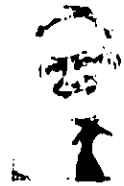
Bradford-Newbury Workshop

The Bradford-Newbury Workshop will meet on Thursday, December 10 at 11:00am at the Friendship House in South Newbury for the Annual Christmas Party. This will be a pot-luck luncheon and everyone is asked to also bring a gift for the Shelter for a boy or girl. Please mark gifts for appropriate age and sex. Also, bring a gift to exchange during the Christmas festivities.

—Clare Bensley

Legislative Report

By Representative
Bernie Lamach



First and foremost, I want to thank the voters and people who assisted with my campaign for County Commissioner which resulted in my success for higher office. I carried 8 out of the 10 towns in the district for a substantial margin. I look forward to serving you and the new challenges I'll face. I'll be bowing out of this column and handing over my space to Beth Rodd, who will serve the Town and District well in the Legislature.

My thoughts at this time are filled with many subjects, perhaps more than should be in one column. If local government is to survive and serve as intended, it will depend upon informed constituents, active voters, and willing candidates. I have a high respect for any individuals who will stand for election, campaign and be ready to express their views on a wide variety of subjects. My appreciation is as great for those who lose as well as those who win. There are no personal, ego or monetary rewards for second place in an election. Yet we depend on this type of contest to get the open dialog and debate of issues to establish what our follow-on policies will be. Without this debate process a democracy could not exist. It is the most fundamental of requirements in a free society. I wonder if it is any coincidence that Thanksgiving follows Election Day?

Legislatively, the House is quite active at the present time. Some committee work continues, new bills for the next session are being drafted, orientation for new members is taking place and much planning is under way for the next session. Early organization, swearing in and leadership will be elected on December 2. The new legislature will also elect the Secretary of State at that time. The first day of the new session will be January

6, and the Governor's inauguration will be January 7.

By the time this is in print, the committee to study adequacy and cost of public education will have reported, and the Supreme Court may have ruled on an extension of time regarding school finance issues. December and January look to be quite active months for the elected body.

A little known part of the responsibilities of representatives is their service as delegates to county government. On December 11, all Merrimack County Representatives will meet to elect leadership of the group. After that time, issues such as budget and policy can be discussed.

I am proud to read in recent days that two issues I was very involved with as a representative are coming to fruition: an offer by Public Service of New Hampshire to lower rates and negotiate deregulation, and the plan to install cleanup equipment to the emissions at the Merrimack Power Plant. Utility deregulation and clean air were two priority items in legislation coming out of the Science and Technology Committee.

One of the standards I tried to uphold as your state representative was constituent service and information. In that regard I hope to provide the same kind of service at the county level and try to keep you informed of county issues and policies in my new role as commissioner. I hope to offer informative articles from time to time as space will allow. I'm pleased that this area of the county again has a seat in Concord. I will try to serve you well and bring credit to the area. Thanks again for the privilege and honor of serving you the past four years.

Thistle and Shamrock Inn
& Restaurant

11 West Main Street, Bradford, NH
03221

"Red and Breakfast Accommodations"

December Events

CHRISTMAS IN THE COUNTRY
GET YOUR CALENDAR AT LOCAL BUSINESSES

DECEMBER 12TH. 11:30 A.M. - 2:00 P.M.
"CHILI AND CHOWDER FEST"

DECEMBER 13TH. 1:00 - 4:00 P.M.
"INN TOUR"

DECEMBER 20TH. 5:00 - 8:00 P.M.
"FESTIVE HOLIDAY DINNER"
RESERVE EARLY

DECEMBER 31ST. 6:00 - 9:00 P.M.
"NEW YEARS EVE DINNER"
RESERVE EARLY

Serving our regular menu
every Wed. thru Sun.
from 5:30pm

938-5553

Extra houseguests over the
Holidays? Send them to us.
We'll even feed them breakfast
so you can sleep in!

Accommodating Beauty with Lannie

OPEN HOUSE Thursday, Dec. 10
20% off all store items

Make an appointment with Lannie or Robin
to assist you with your holiday services.

938-5444

Bradford Corners • Rte 114 • Bradford WALK-INS WELCOME
Mon.-Wed. 9-5 • Thurs.-Fri. 9-7 • Sat. 9-3

Soo-Nipi Audubon Chapter News

Join Dave Anderson, Field Education Specialist, Society for the Protection of New Hampshire Forests, as he presents his slide program, "New Hampshire Land and Community Heritage." The program will take place at the Soo-Nipi Audubon Chapter meeting on Friday, December 11, 7:30pm, at St. Andrews Episcopal Church on Gould Road in New London.

Dave will discuss the initiative to protect the State's most important natural landscapes, cultural features and historic sites under a public-private program, the New Hampshire Land and Community Heritage Commission. The Commission would provide identification and an inventory of the resources that must be protected. This program is open to the public and refreshments will be served. For details call Karen Sullivan at 926-4550.

If you have an interest in birding, please consider joining a group of volunteer observers in the Lake Sunapee area on Saturday, December 19 when the Soo-Nipi Audubon Chapter participates for its ninth season in the National Audubon Society Annual Christmas Bird Count.

Our Lake Sunapee Area Count Circle is one of 19 in New Hampshire being surveyed with the results being published in the Winter issue of "Bird Records," edited by the Audubon Society of New Hampshire, and in the National Audubon Society publication entitled "American Birds."

Teams of observers will cover the towns of Sunapee, New London, Newbury, North Sutton and parts of Springfield, Croydon, Newport, and Goshen. At day's end, participants meet over supper to compile results of birds seen in fields, roadsides, waterways and feeders. In 1997, observers in this area noted 44 species for a total of 3,012 birds which included the unusual snow bunting and a bald eagle.

For details or to volunteer contact coordinator Gary Stansfield, at 863-3737.

—Phyllis H. Curtiss

Report on the Kearsarge Regional School District by Mike Hague, Bradford School Board Representative

BUDGET UPDATE:

Your School Board and Municipal Budget Committee have been meeting regularly to come up with a proposed budget for the next year. This year's budget is important because last year's budget was cut \$92,000 and we had a health insurance overrun of \$257,000. This wiped out a surplus we had maintained and forced us to first freeze the budget last year, then cut 20% from all educational supplies this year. Enrollment is projected to be up about 60 students for next year and there is a small inflation factor.

The budget process for this year involved two stages: the School Board and MBC were presented first with a 0% increase budget and then, second, with a list of items that the district thought absolutely necessary for continuing to provide a quality education to students. This list of budget items was then cut by about 1/3 by the School Board. The total budget will be presented to the voters along with a list of Warrant Articles. We are attempting to present a very modest increase to you the voter but there are necessary items vital to maintaining quality education for our kids. Some of the things we cut are: a proposed international language program for elementary students, half of the computers for the middle school and elementary schools, an enrichment position for the middle school and part time art, business and health occupational positions for the high school. Some of the things we endorsed are: elementary positions in teaching, physical education and reading; middle school reading positions; a high school reading position and special educational position, part time foreign language position and culinary arts position, new pre-engineering program (partially grant-funded) and an additional secretary position.

I will be making a strong case for adopting our budget over the coming months and I invite your questions and input at any time. Many of us vote without going to the School District Meeting (January 9), without visiting our schools or without obtaining any objective information. Some of us merely rely upon rumor or hearsay. Please ask questions, get involved in some fashion and make an informed decision. Our youth depend upon it. You can reach me at 938-2722, lovmnts@aol.com or 121 Marshall Hill Rd. Bernie Lamach is our MBC representative.

MICROSOFT?

Yes the "Microsoft Home Advisor" on www.msn.com lists the schools in the Kearsarge Regional School District as "very high" in the School Test Rating category, along with very positive ratings on other educational categories.

SCHOOL IMPROVEMENT PLANS

Each year, all of our schools come up with specific plans for improvement based on an assessment of their unique school needs and the goals for the district as a whole. The School Board determines the district goals. The elementary schools presented the results of their plans to the Board and we were impressed by the amount of effort and focus that went into the plans. Bradford's plan included focusing on improving writing and math instruction and computation. The evaluations of those goals showed solid improvement in writing as measured by instructional change, grades and pre and post testing and some, but not yet enough, improvement in the math area. These improvement plans are similar to business plans that attempt to improve efficiency and productivity.



Country Spirit
RESTAURANT & BARS
100 Main Street, New London, NH 03257
(603) 938-7007

Certified Angus Prime Rib
Real Hickory Smoked BBQ
Prime Rib
Freshest of Seafood
Vegetarian Entrees

Open Daily 11-9
Fri & Sat 11-10

428-7007



'Tis the Season and a Very Merry
Christmas to you!

Come to us for your decorating needs

Trees * Wreaths * Lights
Tree Stands * Roping * Snow
Plus gift giving

Camelhaks * Snowshoes
Hats * Gloves * Shirts

Merrimack Farm & Country Store
Main Street, Box 154
Bradford, New Hampshire
(603) 938-2211



The Police Explorers by Audrey V. Sylvester

In the short time the Bradford Police Explorers Post has existed (since May, 1998), the Explorers (all high school students) have experienced the mundane and exhilarating aspects of law enforcement: from note-taking at bi-weekly meetings and practicing marching drills to facing thousands of drivers as traffic controllers at big festivals—the Deerfield Fair, Bradford's Fourth of July Celebration and Warner's Fall Foliage Festival. In the months ahead, there will be new challenges, duties, training and service opportunities.

Individuals in this energetic group have joined the Explorers for many reasons: to be where the action is, to test law enforcement as a career, and to simply come to a meeting because they were egged on to find out what Explorers do. No matter why they join, if they stick with it, Explorers are guaranteed to learn more than they ever expected to know about law, community, their own tolerance levels, public service, and that elusive public which they have pledged to keep safe, help and protect.

The group's advisor, Senior Patrol Officer Robert Varley of the Bradford Police Department, leads the group by his enthusiasm and by encouraging the members to take responsibility and work as a team. The new group evolves into a team as members set their own meeting agendas, coordinate work schedules, learn marching drills and agree on what training courses they would like to take. When on duty, the Bradford Explorers present a distinguished appearance



(left to right) Police Officer Robert Varley, and Explorers Lieutenant Lauren McCormick; Regina Dalrymple; Mark Ricker; and new recruits, Brandon Buttis and Leela Burdick. (Missing from photo: Sargent Jason Soucy; Shawn Sims; Edwin Hodge; and Sarah Clark.)

in their bright blue and black pressed uniforms. Money for uniforms comes from private donations. Explorers earn the right to receive donations, only after giving service first.

Officer Varley's enjoyment of his young trainees is obvious. He leads quietly and keeps a light hand on the reins. The team enjoys an easy, humorous, respectful give-and-take relationship. When joking is pushed, Officer Varley's responses become humorous in their brevity: Explorer to Officer Varley, "In this photograph, I see that you are wearing an orange vest and holding an automatic weapon. Are you hunting with that automatic weapon, Officer?" Of-

ficer Varley replies mildly, "No." Pushing the joking, the Explorer says, "Are you sure?" Officer Valey ends the joking, "Positively."

As a new Post, Bradford Explorers were honored to be selected to direct traffic at the Deerfield Fair. The difficult job requires a cool head. Their responsibility is to keep traffic flowing safely. Traffic became hectic during an emergency, but they kept order—pedestrians out of the way of motor and emergency vehicles. They calmed irate, impatient drivers, who in spite of directions, pressed forward. If a situation escalates, the Explorer must request an officer's assistance. In a revealing understanding of personal worth and ability to handle an abusive driver, one Explorer explained: "You have to take what drivers say and stick it in your back pocket—just let it roll off and not take it to heart. If you took it to heart, you would feel lower than dirt."

In the months ahead, Explorers look forward to map and compass, search and rescue and possibly EMT training; ride-alongs (officers will not allow them to ride along if there is reason to suspect violence); observing court proceedings; participating in paintball experiences; driving in the Demolition Derby; and finding new community service projects. Last summer, the Explorers helped the Lake Massasecum Association inspect boats for Milfoil, a weed that depletes oxygen in the lake and is quickly spread by boats and birds. The Explorers especially enjoyed this duty since most boat owners understood the problem and were pleasant about inspections.

After the one-hour meeting, Officer Varley asked, "Do you have anything else you want to bring up?" . . . a moment of silence. . . "We're going to break this meeting and be back in two weeks."

To be eligible to join the Explorers, a person must have completed 8th Grade and be at least 14 and no older than 21 years of age. For more information on joining the Explorers, contact Robert Varley at the Bradford Police Department's non-emergency number, 938-2522; or write: P.O. Box 436, Bradford, NH 03221.



the LUMBER BARN, Inc.

Route 114 - Bradford
(603)938-5161 • (800)287-9889

Lumber

Millwork - Plywood
Treated Lumber
Roof & Floor Trusses
Masonry Supplies
Kitchens

Building Materials

Tru-Test Paints & Stains
Glass & Screen Repairs
Makita Power Tools
Garden & Lawn
Electrical & Plumbing Supplies

Hours

Monday - Friday: 7am - 5pm
Saturdays: 7:30am - 5pm

Power Equipment

Sales - Service - Rentals

Stihl & Husqvarna
forest & garden
power products

Tools & Safety Clothing

**Country Cobwebs
and Artisan's Sampler**

Bears, Pottery, Jewelry, Icons, Aromatherapy,
Herbal Bath, Candles,
Always Great Gift Baskets and
Baskets to fill with Gourmet Foods.
Unique Gifts for all your Needs!

Open Wed-Sat 10:00-5:00
Sunday by Charge

12 Keenawap Mt Rd
Warner, NH
Van MC 456-3033

Bradford Historical Society News

For several years, Ruth Ann and John Harris have opened their home, the Brick Mill, for a day during the Christmas season. They feel that the old mill, built around 1803 from bricks made of local clay, is such a part of Town history that they welcome people who are interested in the innards of an old mill to visit from 1:00-4:00pm on December 13. Originally a grist mill, it has seen many uses including lumber, electric plant, woodworking, a toy shop, a prefab home business and as a home. Many of the old pulleys, boards and flooring are intact. When the Harrises renovated, they had to sandblast a coating of glue, dust and dirt that had gathered on the wood and bricks over the years. The building has been saved and restored with dignity and care.

The Old Post Office will not have regular hours during the cold weather. Please call 938-5386 if you would like to visit. How about a book for the history buff on your Christmas list? *200 Plus: Bradford in Retrospect* and *The Merrimack Telephone Company: The First Hundred Years* are available from the Historical Society.

Police Report

The Bradford Police Department handled 127 calls for service between October 16 and November 16. The breakdown is as follows: one abandoned vehicle, one alarm activation, two ambulance calls, three animal complaints, 12 arrests, three assists to the Fire Department, nine assists to other police departments, one burglary from a vehicle, three welfare checks, six citizen assists, three incidents of criminal mischief, one criminal trespass, three damaged properties, one domestic disturbance, one driving while intoxicated, three harassing communications, ten illegal possessions of alcohol, one incident/service, one intimidation, one juvenile complaint, two larcenies, one motor vehicle accident, one motor vehicle hit and run, two neighborhood disputes, one paper service, two suspicious persons/vehicles, 21 traffic citations, 42 traffic warnings and one warrant arrest.

—Pennie M. Spooner

027-4073

Route 114
North Sutton

ALL & AWL REPAIR

Small Engine Sales & Service
Tractors • Harness & Tack Repair
Art, Kirk, Lynne & Kris Chadwick
Hours: Mon-Fri 7:30-5:00, Sat til 1:00

GARDENING

by Fred Winch

In my book, this has been one of the most brilliant holly years I have ever seen. The holly I refer to is *ilex verticillata*, the winterherry, or as most New Englanders say, the black Alder. Every damp spot, poorly drained area or marshy fringe has been brilliant with the red fruits on the shrubs, which are native from Newfoundland to Minnesota. As it is so attractive in November through December many people have dug up and planted the wild shrub as a holly hush in their yards. Fortunately it seems to have no pests or enemies. Deer seem to avoid it as the twigs are fine and not of the type of browse deer seem attracted to. Robins do seek out the fruits.

This year the berries are large, bright red and are very persistent. The branches of this native plant lend themselves to combining with balsam and pine to fill up frosted window boxes or half barrels where they will hold for a good part of the winter. As the plant is so widespread geographically, plant breeders have developed varieties but have not had much luck marketing them.

The only holly which has made an impact on the ornamental market is the non-deciduous "Meserve" holly with the named variety of Blue Boy and Blue Girl. These plants are male and female and will grow here in Bradford. Unfortunately, if you have predatory deer, the bright green leaves attract them and they will eat them to the ground. It is well to stick with the native species and seek out young plants that are shoots of larger

clumps to plant in your moist rich soil near your garden.

Christmas always inspires folks to get a "living Christmas Tree", bring it into the house and then plant it outside after the holiday. This takes a good deal of planning ahead if the event is to be a success.

First, a tree should be selected, probably 3 to 4 feet tall as a maximum. In this area, probably a white spruce or Norway spruce should be selected since they are not attractive to deer, as are balsam fir. For real beauty, one might choose Douglas fir or Concolor fir, both western species and not attractive to deer. It would be best to purchase these trees from a nurseryman who can lift and tie the tree in burlap to hold the earth to the roots. Your next step is to dig a hole of ample size to hold the balled tree. Then fill the hole with straw or hay to keep the ground from freezing while the tree is indoors. The balled tree should be held in a cold garage or outbuilding until a day or two before Christmas. Keep the ball wetted before bringing it in. Keep the tree in the house decorated for a week or ten days, then remove it to the planting site.

It is well to have a wheelbarrow or two of good unfrozen soil stored. When the tree is planted outside, loosen the burlap and seat the tree in the hole so it is just slightly below the surrounding area. (The straw or hay is of course removed before planting). Use the stored soil to fill around the root ball, watering the soil as it is put in place. Tamp well. Then stake and tie the tree to keep it from swaying in the breeze. Water well. Use some of the straw to cover the area around the tree. Keep the area well covered with snow. In the spring, be sure the soil is kept moist for the growing season.

And so—Merry Christmas!

BALD SUNAPEE FLORIST & GARDEN CENTER

Route 103—Newbury Harbor
Phone/FAX 763-4551 OPEN 7 DAYS A WEEK

CHRISTMAS TREES, WREATHS & ROPING
POINSETTIAS, MISTLETOE, HOLLY, CEDAR, BALSAM

- * Local Delivery
- * Local Maple Syrup, Honey & Fudge
- * Fresh Flowers
- * Centerpieces with Fresh Greens & Candles

Visit our gift shop, now stocked with clocks, doorstops, welcome slates, loon boxes & wooden loons, stained glass, prints, mirrors, pewter jewelry, chimes & sundials, lamps, dried wreaths & English Gardens, garden tools and more!

For the Holidays, place your orders for Homemade Pies & Gourmet Fruit Baskets
WE WIRE FLOWERS TO FAMILY & FRIENDS WORLDWIDE!!



Selectmen's Meetings

The Selectmen dealt with a wide variety of items in November.

NOVEMBER 2. Town Road Signs—Diane Gadoury discussed the deteriorating condition of some of the road signs that the Bradford Women's Club purchased for the Town with the agreement that the Town would maintain them. Phil Byfield, who made the signs, has agreed to repaint some of the original signs at no charge. Gadoury provided Selectmen with a list prioritizing the signs along Route 103 and asked Selectmen to direct the Highway Department to bring the signs to Byfield in groups of three or four at a time. The Selectmen requested a complete list of signs for planning purposes. At a later meeting, Cheryl Behr reported that the Highway Department had removed the highest-priority street signs and delivered them to Byfield as requested.

Water quality testing—David Currier submitted a report from DES that recent water samples from Lake Massasecum showed E.coli levels well within the limits of state guidelines.

Highway Department—Selectmen discussed mechanical problems with the town's one-ton truck which the mechanic had reported needed to be towed to Grappone in Manchester for a repair estimate. Selectmen instructed him to contact local mechanics for estimates first. The truck has required other expensive repairs recently and the Highway Department plans to present a warrant article for its replacement.

Police Department—Selectmen received a letter of resignation from full time officer Kris Dupuis. Dick Vitale expressed regret at accepting the resignation and offered praise for Dupuis, describing him as "an

outstanding officer." Part time officer Norman Hobbs also recently submitted his resignation.

NOVEMBER 9. Parking on 103—Selectmen signed a request to the NH Department of Transportation regarding no parking signs on Route 103 at the entrance to Cobble Pond Farm and included a suggestion from Chief Sims regarding widening the shoulder opposite the entrance.

New Transfer Station Winter Hours—Selectmen approved 9:00am-4:00pm for the Transfer Station to be open from December 1-March 31 to allow more daylight hours of operation. Regular hours will resume April 1, 1999.

Safety Meeting—Cheryl Behr reported that the Nov. 4th meeting, attended by representatives from the Highway and Maintenance Dept., the Library and the Town Office, was helpful. Safety meetings will be held quarterly.

Zoning of Public Buildings—Selectmen voted to rescind their memo regarding public buildings meeting all local regulations. The issue is outside the authority of the Selectmen and a vote at Town Meeting would be required to put this into effect.

Trailer on West Meadow Road—Selectmen discussed a trailer that has been installed without a permit. Certified letters to the property owner have been returned unclaimed. Selectmen suggested contacting the police to determine whether the property owner is aware of the situation.

NOVEMBER 17. Revolving Loan Fund—Diane Gadoury presented a copy of a new summary sheet for loan applicants, and the amendments to the revolving loan policy statement. She updated the Selectmen on current availability of funds for small business loans.

Bradford Newbury Kindergarten & Pre-school Board sent Selectmen a letter requesting clarification of the status of the Kindergarten if it becomes a tenant of the Community Center, and asked whether rental fees would be charged.

East Washington Road residents submitted a petition requesting that the town maintain the road. Selectmen will consult with the Road Committee and the Road Agent to determine how this will fit into the schedule.

NOVEMBER 23. 1999 Budget—Selectmen met with Sue Pehrson from the Town Clerk and Tax Collector's Office, Mark Goldberg, Chris Frey and Ralph Carroll from the Fire Department and Ken Anderson from the Transfer Station to review their budget requests for 1999. Each explained increases in particular line items. Chris Frey of the Fire Department also provided the Board with a twenty-year capital equipment plan.

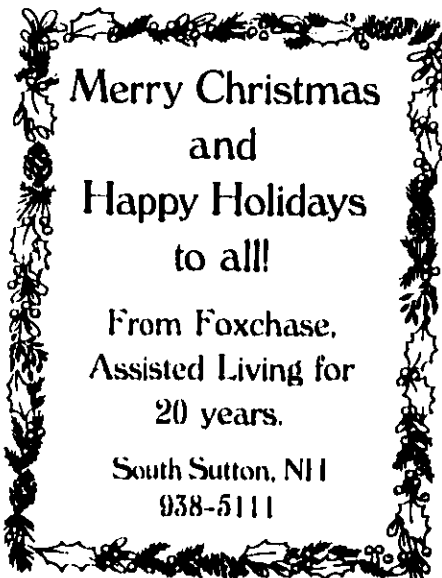
Selectmen conducted a detailed review of revenue projections for 1999. At this time, the review shows a 1999 revenue estimate that is \$25,000 less than the 1998 total.

Transfer Station—The expense of disposing of construction and demolition debris ran over the 1998 budget line item because of unexpectedly heavy use of the dumpster. Ken Anderson reported that most of the waste comes from contractors. Selectmen noted that many communities either don't accept such waste or have instituted various types of user fees. They expressed concern that during high-use years, the cost to the town is a difficult burden for taxpayers, and they will continue to investigate alternatives for the coming year. Ken Anderson expressed concern about the disposal of painted wood, which comes from "everyone not just contractors," saying that if the town won't accept it, it will be disposed of improperly.

Selectmen approved the appointment of Ken Anderson to the Concord Regional Solid Waste/Resource Recovery Cooperative.

Class VI Roads—Perry Teele reported that the Conservation Commission is making videotapes of the condition of Class VI roads and that as of November 18, both the Class V and the class VI portions of Massasecum Ave. were in very good condition.

Marcia Keller, speaking as a member of the Road Committee, expressed concern about an intent to cut for property on Day Pond Road signed by the Selectmen on November 17, and asked what route was being used to haul the timber out. Selectmen will investigate.



**WALCO
MECHANICAL CO.**

REFRIGERATION, HEATING,
AIR CONDITIONING, ELECTRICAL CONTRACTORS

COMMERCIAL • INDUSTRIAL • RESIDENTIAL

SERVICE • SALES • INSTALLATION

MAINTENANCE PROGRAMS

SYSTEM EVALUATIONS

938-2926

BRADFORD, NEW HAMPSHIRE

Selectman Conway requests leave, urges spending control measures

At the close of the Selectmen's meeting on November 2, Selectman Joe Conway presented a memorandum requesting that he be granted a leave of absence through December 31. He cited frustration with "an air of complacency [that] has settled in among various boards, committees and segments of our community" in the face of "the important issues that continue to face this community." He requested an excused leave to be able to "evaluate my present and continued status and degree of involvement given my current perception of our community environment," saying he would inform the Board of his future intentions on or before December 31.

Selectman Vitale responded that it is not within the Board's authority to grant such a request, though Conway could choose not to attend meetings. Vitale pointed out that scheduled vacations for himself and Marvin Rich would begin with the November 23rd meeting, and that if Conway chose not to attend, the town would not be able to conduct its business. Conway replied that he hoped to be able to reach a decision about his future participation by that time.

Conway was absent from the November 9 and 17 meetings, and returned for the meeting on the 23rd when Selectman Rich had an excused absence. Contacted by telephone, he stated that he is now back, and will attend meetings regularly.

At the meeting on the 17th, Selectmen received a memorandum from Conway regarding the 1998 budget stating that the town faces "the likelihood that the budget approved at Town Meeting for fiscal year end 1998 will be overspent." He said that he believed it is possible to finish the year within approved gross appropriations if certain actions were taken by the Selectmen, including immediately freezing the entire budget and requiring prior approval for all expenditures with the exception of wages, insurance, utilities and vehicle fuel expenses.

He also recommended collecting all outstanding invoices to determine the Town's current outstanding obligations and recalculating and projecting the budget on a weekly basis based on actual expenditures and essential Town needs. He wrote that "some departments in the Town might experience some inconveniences but none will suffer any harm and all employees will continue to be able to work within normal scheduled hours." He concluded by urging fellow Selectmen to take action, saying, "The responsibility is in our hands. Act now, please take a formal vote to institute the appropriate measures. This is not the time to shy away from our duties or potential criticism."

In a telephone interview, Selectman Vitale said that while they have not formally frozen the budget, he has met with department heads to inform them of the situation and to request that they inform Cheryl Behr of expenditures other than normal operating expenses. The Selectmen are also enforcing an existing policy requiring purchase orders for expenditures over \$250, and are monitoring spending on a day-to-day basis. They anticipate being able to finish the year within the budget.

—Lyn Betz

Holiday Storytelling at MainStreet BookEnds

MainStreet Bookends, on East Main Street in Warner, will be offering holiday readings from *A Christmas Carol* by Charles Dickens for their Friday evening storytelling in December. On Dec. 4, the readings will be "Marley's Ghost" and "The First of the Three Spirits," followed by "The Second of the Three Spirits" on Dec. 11 and "The Last of the Spirits" and "The End of It" on Dec. 18. All readings begin at 7:00pm. For more information, call 456-2700.

MainStreet BookEnds opened in October as a community bookstore with a special focus on serving children and educators. Local authors are featured, and work is under way on a gallery that will offer local artwork.

LIBRARY Continued from page 1

The library will not be asking for any additional tax dollars for the expansion project. Instead, the balance of funds needed will come from private donations and grant opportunities. Capital campaign gifts and pledges continue to come in on a regular basis. Every gift or pledge, regardless of size, brings us closer to the goal, and if you haven't already given we invite you to make a tax deductible donation. Your support will mean a library we can all be proud of, one that will be comparable to those in nearby towns and that will enrich all of our lives. Several people have chosen to give a named gift donation as a Christmas gift—the perfect present for someone who has everything! If you need more information about the named gifts available or you need a copy of the capital campaign literature, contact Sue Bunis at 938-5051.



BWC Update

The Bradford Women's Club had a good turnout for the membership meeting on November 17. Peggy Leighton from "The Gathering Place" explained the differences between herbal teas. We learned which teas are good for different ailments, which tea relaxes you etc. Refreshments were enjoyed by everyone.

The lighting of the BWC Christmas tree is on Saturday, December 5.

ATTENTION ALL GIRLS AND BOYS!!! Santa will be in town on Saturday, December 12 at 4:00pm. Cookies and cocoa will be served. Pictures will be taken with Santa. We need BWC elves to bake cookies for refreshments.

Don't forget to join us once again for our famous Chili and Chowder Fest. It will be held at the Thistle and Shamrock Inn on Saturday December 12 from 11:00am-2:00pm.

Everyone is invited to come and have fun on the FREE BWC Hayride, on Sunday, December 13. The Hayride will be from the Thistle and Shamrock Inn to the Candlelight Inn, between noon and 3:00pm.

I would like to thank all the women from the BWC, who worked so hard, to make our annual Holiday Crafts and Antique Fair a success. A very special thank you to Ann Hallahan for the use of her Real Estate house.

—Doris Tremblay



Beer & Wine

Delicious Pizza

Lunch Specials, Salads, Steak Subs,
Italian Dinners, Spaghetti, Grinders,
Gyro Subs, Calzones, Pockets,

13 flavors of PREMIUM ICE CREAM

Pizza Chef of Bradford 938-2600

Corner of Rtes 103 & 114

Then and Now by Milly Kittredge

Photo by Milly Kittredge. The old Polar Express train.



The Polar Express?

From 1850 to 1960, the railroad was a part of Bradford. In 1961, an excursion steam engine made a few runs to Sunapee.

The old track bed is now the Fitness Trail. Before Route 103 was built, following the old tracks fairly closely, High Street was the main road through Bradford to points north. The railroad continued up into Newbury through the present Southgate.



Planning Board notes

During November, the Planning Board dealt with the following items:

Preliminary consultation with Julie Friedline for a site plan review for property on Greenhouse Lane for a shop to manufacture fleece hats and possible use as a retail shop. The application process was outlined and the material that must be submitted. The completed application was returned at a later meeting and accepted for a public hearing scheduled for 8:30pm on December 8.

A completed application was accepted for a two-lot subdivision on Marshall Hill Road. Roger Rodewald made the presentation on behalf of RCS Designs and the owner, Beth Rodd. He requested a conditional approval in order to complete the property transfer in time to get a foundation in place before frost. Following the public hearing that brought no questions or comments from the Board or the public, the Board voted to approve the subdivision with four conditions that must be met—mylars created and delivered, deed descriptions prepared, State subdivision and septic approval obtained, and stone hounds set where required.

Letters were sent to several property owners notifying them of the need to complete actions required by the Planning Board or to appear before the board to clarify existing situations.

The Board decided to set time aside in the future to review the Master Plan and determine what, if any, changes should be recommended to current regulations.

A request was made for a revision to the Bradford Marketplace site plan to allow a portion of the building formerly occupied by Family & Friends Garage to be used as a new location for The Gathering Place. Board members expressed concern about the adequacy of the existing bathroom facility in the building. The revision was approved with the requirement that the bathroom must meet all applicable codes, including BOCA, BOCA plumbing, and ADA, prior to December 31, 1999.

RCS Designs submitted an application for a five-lot subdivision on West Road. The board will review the plans on December 8 at 8:00pm, and if the plans are accepted as complete, will schedule a public hearing for December 22.

Henniker
Pharmacy

HENNIKER VETERINARY CLINIC

Leo R. Dube, D.V.M.

428-3441

62 Maple Street
Henniker

428-7076

Wright Travel

WORLDWIDE TRAVEL ARRANGEMENTS
Henniker Mini-Mall Nancy Wright
Main St., Henniker Manager

CHRISTMAS IN THE COUNTRY CALENDAR OF EVENTS

TUESDAY, DECEMBER 1

- 7:00-9:00pm **Christmas Swag Class** at Marlene's Florist Shoppe

THURSDAY, DECEMBER 3

- 5:00-8:00pm **Christmas Open House** at: Bowie's Market, The Estate Barn, The Gathering Place, Merrimack Farm and Country Store and R. L. Dodge Co.

SATURDAY, DECEMBER 5

- 10:00am-noon **Crafts to Take** at the First Baptist Church.
- 5:00pm **Tree Lighting** in front of the Library, sponsored by the Bradford Women's Club
- 5:15pm **Hanging of the Greens and Christmas Stroll and Caroling** with the Church Choir, followed by hot chocolate at the Town Hall
- 5:30-7:00pm **Ham and Bean Supper** at the First Baptist Church followed by the **Cantalina Trio** at 7:30pm

SUNDAY, DECEMBER 6

- Noon-4:00pm **Christmas Tree and Wreath Sale** to benefit the Community Center and First Baptist Church Youth Group
- 4:15pm **Odds Bodkin Christmas Story Telling** at the First Baptist Church. \$2 per person, \$6 per family to benefit the Bradford Community Center

TUESDAY, DECEMBER 8

- 7:00-9:00pm **Christmas Boxwood Tree Class** at Marlene's Florist Shoppe

THURSDAY, DECEMBER 10

- 3:00-8:00pm **Christmas Open House** at: Accommodating Beauty, Books by the Lake and Marlene's Florist Shoppe
- Ladies Night at Dickie's Outdoor Sports

FRIDAY, DECEMBER 11

- 4:00-8:00pm **Christmas Open House** at Bodysmith

SATURDAY, DECEMBER 12

- 11:30am-2:00pm **Chili and Chowder Fest** sponsored by the Bradford Women's Club at the Thistle and Shamrock Inn
- 10:00am-2:00pm **Santa's Outlet** at KRES Bradford, sponsored by the Bradford Newbury Preschool and Kindergarten
- 10:00am-2:00pm **Holiday Fair** at KRES Bradford, sponsored by the PTC
- 4:00pm **Santa Claus** at the Town Hall

SUNDAY, DECEMBER 13

- Noon-4:00pm **4th Annual Historic Homes and Inns Tour**
- Noon-3:00pm **Horse-drawn Hay Rides** sponsored by the Bradford Women's Club
- 1:00-4:00pm **Open House at the Brick Mill**, Bradford Historical Society
- 1:00-4:00pm **Open House at the Brown Memorial Library**
- 4:00pm **Messiah Sing** sponsored by Moon Mountain Arts, First Baptist Church. Bring a score if you have one.

SATURDAY, DECEMBER 19

- **Winter Sports Day** sponsored by Bradford Fish and Game Club and Bradford Parks and Recreation Department
- 10:00am-1:00pm **Let's Go Ice-fishing Course** at the Fish and Game Clubhouse

SUNDAY, DECEMBER 20

- 5:00-8:00pm **Festive Holiday Dinner** at the Thistle and Shamrock Inn, with BBA Christmas Decorating Contest Awards and Bradford Businesses Holiday Drawings

TUESDAY, DECEMBER 22

- 6:30pm **Christmas Pageant** by the Bradford Newbury Kindergarten and Preschool at the Town Hall

THURSDAY, DECEMBER 24

- 5:00pm **Christmas Eve Children's Pageant** at the Meeting House at Bradford Center
- 7:00pm **Traditional Candlelight Service** at the First Baptist Church

ONGOING EVENT

- **Dickens Era Display, London Village** at Foxchase, Route 114, South Sutton, Wednesdays December 2, 9 and 16 from 7:00-8:00pm and Saturday, December 5, 12 and 19 from 2:00-4:00pm



Septic System Designs
Test Pits, Perc Tests
Site Assessments
Land Planning
Permitting

ROBERT C. STEWART, Jr.
938-2256 Main Street

Hugo's Electric Service

Hugo Flinkstrom
Licensed & Insured

RESIDENTIAL • COMMERCIAL • INDUSTRIAL
938-5573 Rte 114, Bradford

Martin Energy

* * **COAL** * *

Ask about our new & used stoves
Hand Fired Heating Units

938-5531



December Calendar



TUESDAY, DECEMBER 1

ZBA, Town Hall, 7:00pm
KRSD School Board/Municipal Budget Committee Joint Meeting, KRHS, 7:00pm
Bradford Fish and Game Club, Gillingham Drive, 7:30pm

WEDNESDAY, DECEMBER 2

First Wednesday Presentation, "Unleash Your Inner Healer", Gathering Place, 7:00pm, \$5 donation, call 938-5790 for more information
Library Trustees Meeting, BML, 7:00pm
KRSD at Bradford PTC Meeting, Elementary School, 7:00pm

THURSDAY, DECEMBER 3

Senior Rally planning meeting, Ann Hallahan Real Estate, 1:00pm
KRSD School Board Meeting, New London Elementary School, 7:00pm

FRIDAY, DECEMBER 4

Bradford Community Corporation Meeting, Town Hall, 7:00am

MONDAY, DECEMBER 7

Bradford Cemetery Commission, call 938-5386 for information, 9:00am
Selectmen's Meeting, Town Hall, 7:00pm

TUESDAY, DECEMBER 8

KRHS Academic Exposition and Winter Concert, KRHS, 6:30pm (free to public)
Planning Board, Town Hall, 7:30pm

WEDNESDAY, DECEMBER 9

Informational Meetings concerning the Community Center, Town Hall, pick your most convenient time to attend—9:30am, 12:30pm, or 7:30pm
Bradford Revolving Loan Fund Committee, Town Hall, 7:00pm
Country Capitalists, call 938-2787 for information

THURSDAY, DECEMBER 10

BEOC Meeting, Town Hall, 7:30pm

MONDAY, DECEMBER 14

Selectmen's Meeting, Town Hall, 7:00pm

TUESDAY, DECEMBER 15

Conservation Commission, Town Hall, 7:30pm

WEDNESDAY, DECEMBER 16

Road Committee, Town Hall, 7:00pm

THURSDAY, DECEMBER 17

KRSD School Board Meeting, KRHS, 7:00pm
Parks and Recreation Meeting, Town Hall, 7:00pm

FRIDAY, DECEMBER 18

Bradford Community Corporation Meeting, Town Hall, 7:00am

MONDAY, DECEMBER 21

Selectmen's Meeting, Town Hall, 7:00pm
BBA, Church Vestry, 7:00pm

TUESDAY, DECEMBER 22

Planning Board, Town Hall, 7:30pm

MONDAY, DECEMBER 28

Selectmen's Meeting, Town Hall, 7:00pm

Note: During the cold months you may make an appointment to visit the Historical Society by calling 938-5386.

To list events for the January calendar, please call Betty Hague at 938-2722

Classifieds

FOR SALE. Queen size Serta box spring, still in wrapper, \$250 or best offer. 938-5281 or 456-2314

USED CAR NEEDED, must pass inspection 938-5182

FOR SALE. Amana 4 burner electric range top, installs in counter \$75.00; 14 foot O'Day sailboat and trailer, great family boat, comfy, safe, dry. \$1100; Alcohol stove for cruising boat or camper \$20. 938-2484

FOR SALE. VCR, Hitachi VHS, 11 years old. \$35 or b.o. runs fine except no remote or pre-programming. Owner manual, instructions included. 938-2505, leave message.

LOST CAT from Forest St. Large female gray and white, named DW. May be wandering around Lake Massasecum. 938-5016

FOR SALE. Country Print beige and navy recliner, excellent condition, \$75. 938-5310

TEMPORARY HOME NEEDED for one or two cats while owners are on two extended trips this winter. One large, loveable male; one sweet, independent female who needs occasional petting. 938-2252

To place a FREE classified ad of 40 words or less, please call Carey Rodd at 938-2692.

Bradford Bridge January deadlines

Display ads	Dec. 20
Classified ads	Dec. 26
Articles	Dec. 20

A Note from the Editor:

I urge all contributors to submit material for the paper **IN ADVANCE OF THE DEADLINE** when possible for the next three months. In addition to working around the holidays, I will be working around the birth of a new baby at the end of January.

I am very pleased to have Meg Fearnley training as my assistant editor, and she will be filling in for me while I take a maternity leave in January and February. Please help by letting us know if you have something you would like to contribute, and by getting it to us as early in the month as possible.

With my thanks to all the wonderful volunteers who make this paper possible,

—Lyn Betz

See Christmas in the Country Calendar on
Page 19 for listings of Christmas events